

## ATTACHMENT H: MATERIALS HANDLING

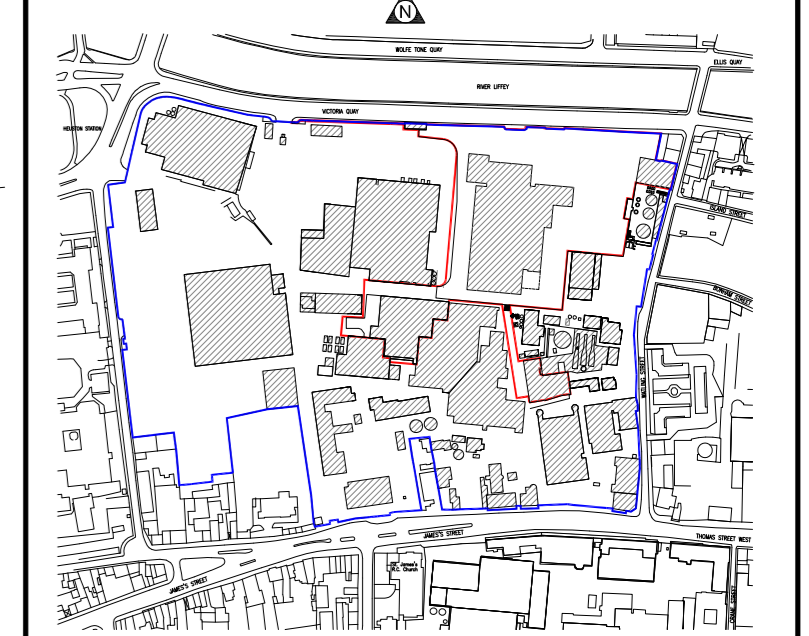
---

### Attachment H.1 Raw Materials, Intermediates and Product Handling

This attachment contains the following:

- H1.1 Drawing 27: Storage Locations within New Brewhouse – Ground Floor
- H1.2 Drawing 28: Storage Locations within New Brewhouse – First Floor
- H1.3 Drawing 29: Storage Locations within New Brewhouse – Mezzanine Floor
- H1.4 Drawing 30: Storage Locations within New Brewhouse – Fourth Floor
- H1.5 Drawing 31: Storage Locations FBP Extension

*For inspection purposes only.  
Consent of copyright owner required for any other use.*



**KEY PLAN**

█ RAW MATERIAL  
█ WASTE MATERIAL  
█ EMISSION POINTS

DRAWINGS AND SPECIFICATIONS SUPERSEDE S.O.D.  
 MEASURE  
 DO NOT SCALE.  
 THIS DRAWING WAS GENERATED USING CAD AND  
 MUST NOT BE ALTERED MANUALLY.

01	PROPOSED BREWHOUSE GROUND FLOOR PLAN	1:200
02	EXISTING BREWHOUSE GROUND FLOOR PLAN	1:200
03	EXISTING BREWHOUSE FIRST FLOOR PLAN	1:200
04	EXISTING BREWHOUSE SECOND FLOOR PLAN	1:200
05	EXISTING BREWHOUSE ROOF PLAN	1:200
06	EXISTING BREWHOUSE SECTION	1:200
07	EXISTING BREWHOUSE ELEVATION	1:200
08	EXISTING BREWHOUSE EXTERIOR FINISH	1:200
09	EXISTING BREWHOUSE INTERIOR FINISH	1:200
10	EXISTING BREWHOUSE MECHANICAL	1:200
11	EXISTING BREWHOUSE ELECTRICAL	1:200
12	EXISTING BREWHOUSE PLUMBING	1:200
13	EXISTING BREWHOUSE PAINT	1:200
14	EXISTING BREWHOUSE FURNITURE	1:200
15	EXISTING BREWHOUSE LANDSCAPE	1:200
16	EXISTING BREWHOUSE SITEWORK	1:200
17	EXISTING BREWHOUSE UTILITIES	1:200

**RKD ARCHITECTS**

51 Northumberland Road  
 Suite 101, Richmond  
 BC V6V 1K6  
 Tel: (604) 273-8888  
 Fax: (604) 273-8889  
 www.rkd.ca

Robert Kuhn - Owner    Artistic    Project Manager    Interior Designer

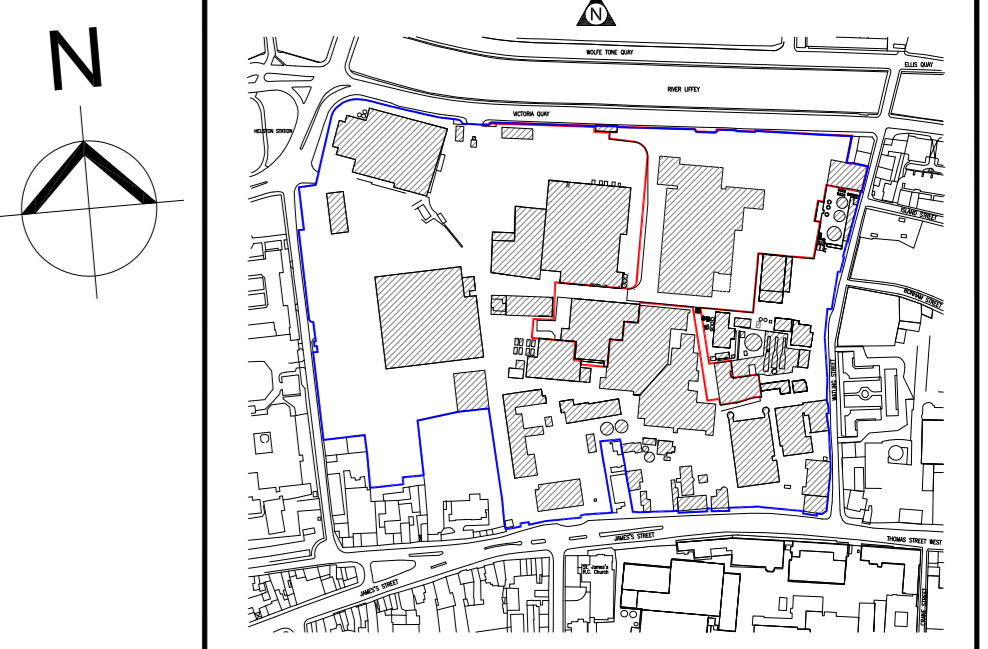
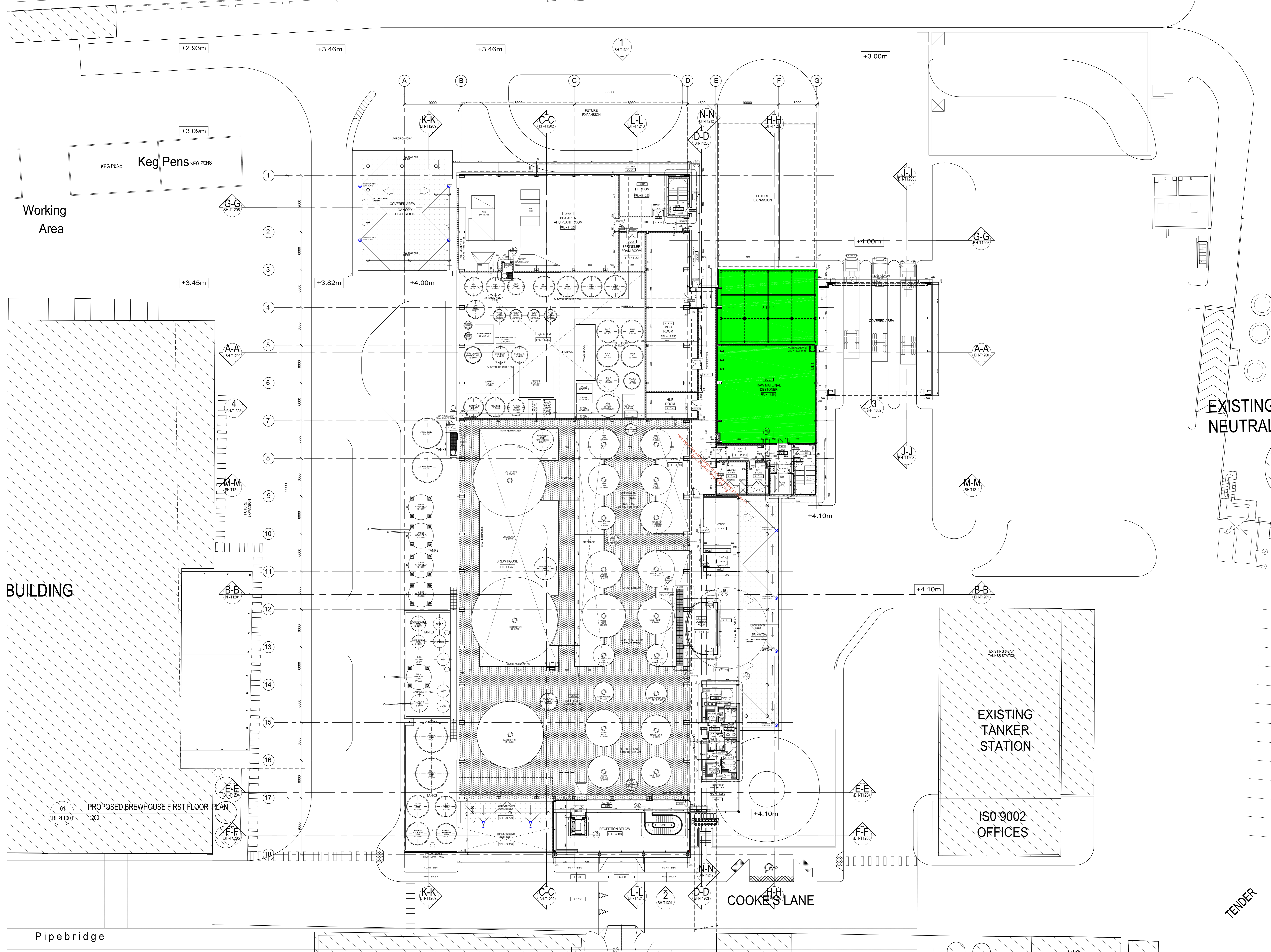
**DIAGEO**

PROJECT PHOENIX

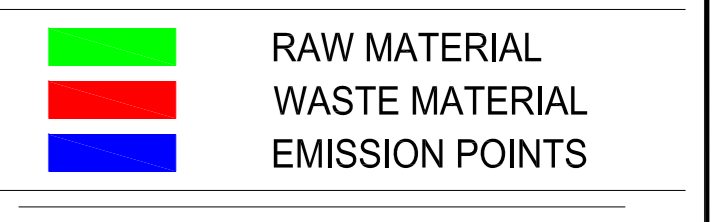
PROPOSED BREWHOUSE  
 OVERALL GROUND FLOOR PLAN

DATE	SCALE	DATE	STATUS
11/08/20	1:200	2011.10.07	CL
11083	BH-T1000		
E12674			T1

Victoria Quay House)



KEY PLAN



EXISTING NEUTRAL

EXISTING TANKER STATION

ISO 9002 OFFICES

COOKER'S LANE

TENDER

BUILDING

Pipebridge

PROPOSED BREWHOUSE FIRST FLOOR PLAN

DRAWINGS AND SPECIFICATIONS SUPERSEDE S.O.D. MEASURE. DO NOT SCALE. THIS DRAWING WAS GENERATED USING CAD AND MUST NOT BE ALTERED MANUALLY.

11 GENERAL REVISION & COORDINATION	CL	POD	06/04/15
12 MAIN CONTRACT TENDER	CL	POD	06/04/15
1031 SUBJECT OF REVISION	CL	POD	06/04/15

**RKD ARCHITECTS**

151 Northumberland Road  
 Dublin 4, Ireland  
 Tel: +353 1 888 1555  
 Fax: +353 1 888 3888  
 info@rkd.ie  
 www.rkd.ie

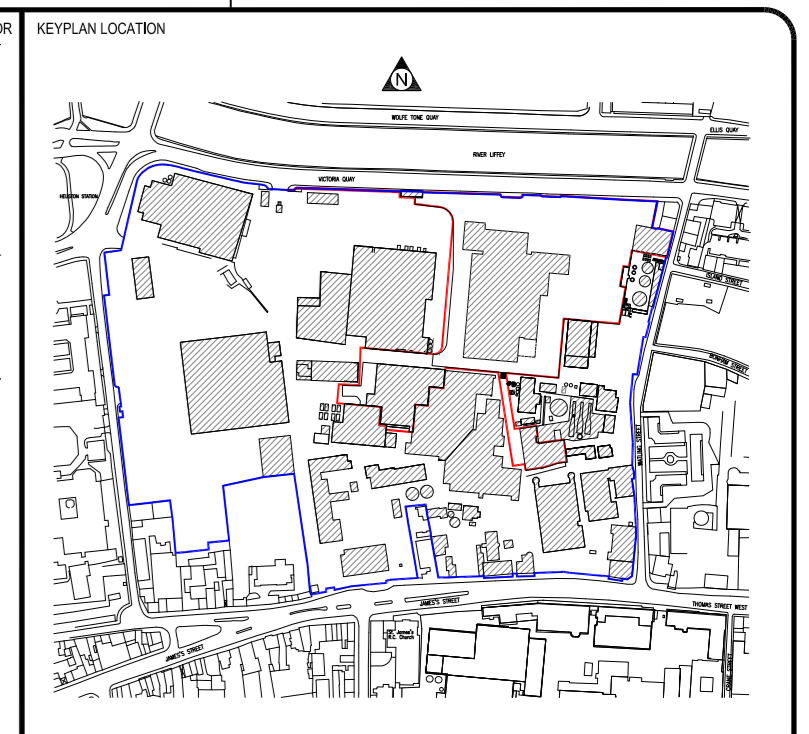
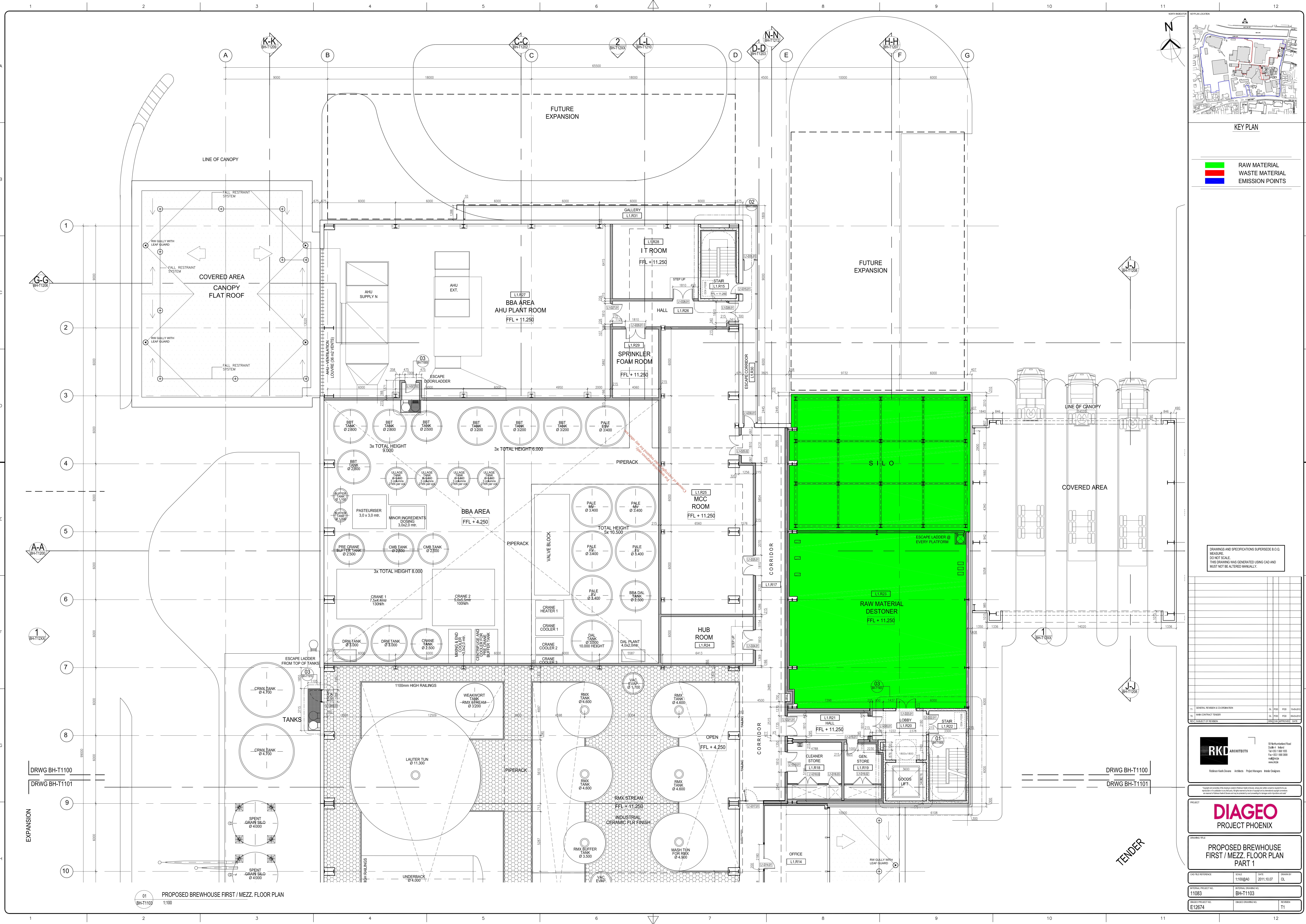
Robbie Kelly - Director    Aislinn - Project Manager    Niall - Designer

**DIAGEO**  
PROJECT PHOENIX

PROPOSED BREWHOUSE FIRST FLOOR PLAN

DATE FILED	SCALE	DATE	DRAWN BY
11/08/15	1:200 (9A0)	2011.10.07	CL
PROJECT NO.	WORKING DRAWING NO.	DATE	REVISION
11083	BH-T1001		T1
DWGNO PROJECT NO.	DWGNO CONTRACT NO.	DATE	REVISION
E12674			

All dimensions to be checked on site. Floor dimensions take preference over scaled dimensions. Any errors or omissions shall be reported to the Architects. This drawing may not be used or modified by the recipient.



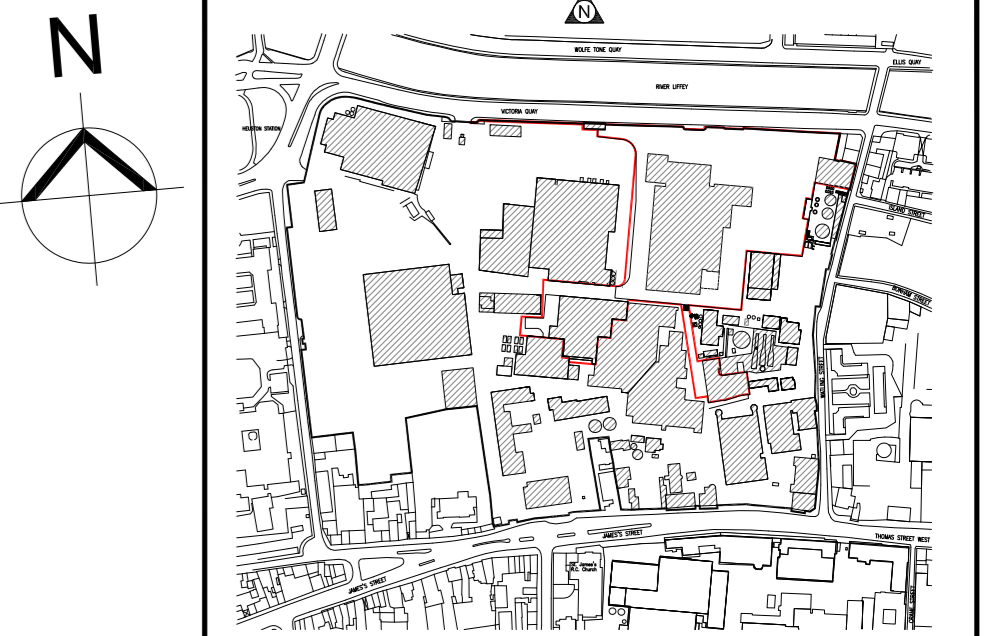
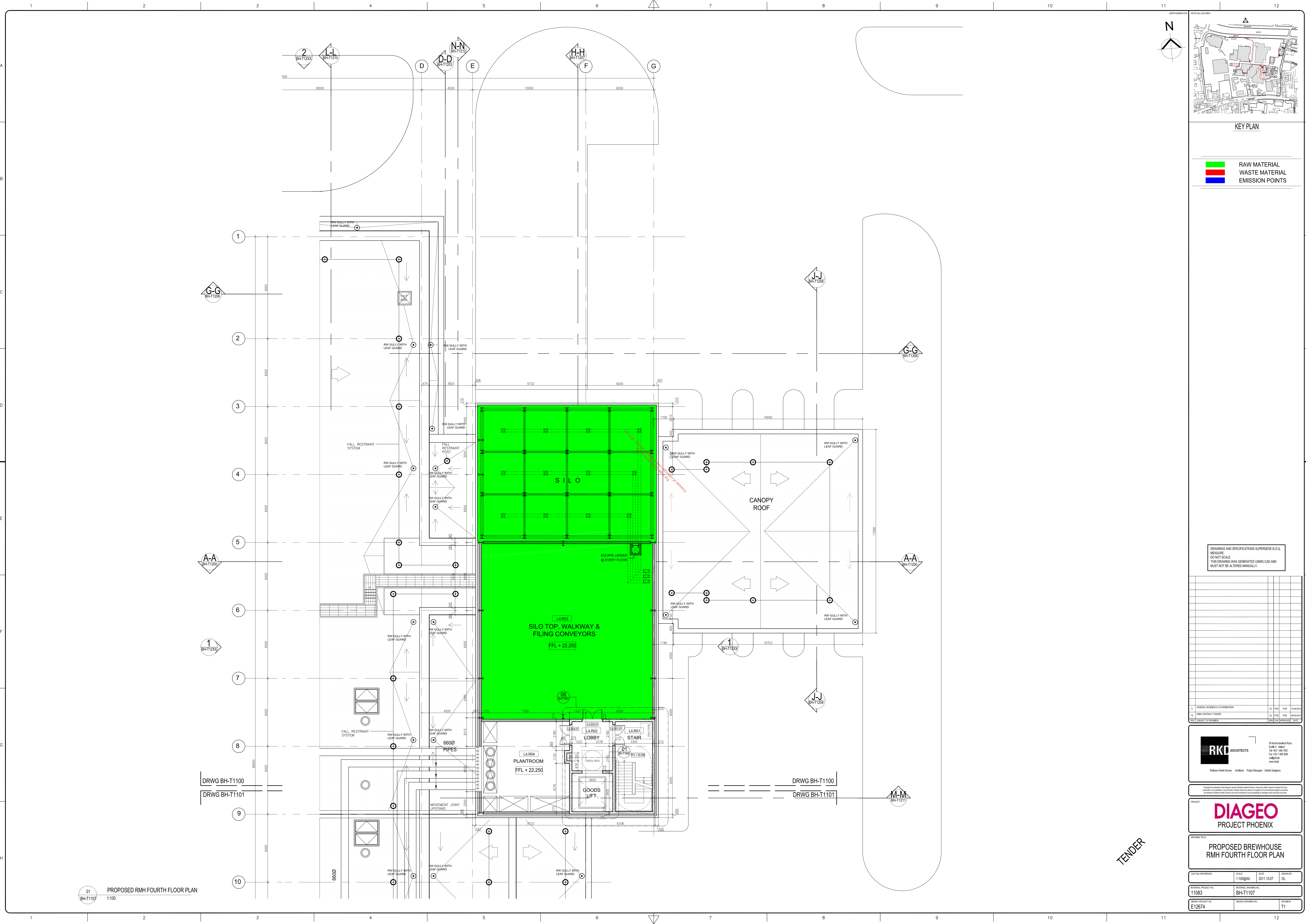
KEY PLAN

█ RAW MATERIAL  
█ WASTE MATERIAL  
█ EMISSION POINTS

DRAWINGS AND SPECIFICATIONS SUPERSEDE B.O.D. MEASURE.  
 DO NOT SCALE.  
 THIS DRAWING WAS GENERATED USING CAD AND MUST NOT BE ALTERED MANUALLY.

**RKD ARCHITECTS**  
 11/11/2018  
 11/11/2018  
 11/11/2018  
 11/11/2018

**DIAGEO**  
 PROJECT PHOENIX  
 PROPOSED BREWHOUSE FIRST / MEZZ. FLOOR PLAN PART 1  
 DATE: 11/11/2018  
 DRAWN BY: [Name]  
 CHECKED BY: [Name]  
 PROJECT NO: 11083  
 SHEET NO: BH-T1103  
 SCALE: 1:100



KEY PLAN

- RAW MATERIAL
- WASTE MATERIAL
- EMISSION POINTS

DRAWINGS AND SPECIFICATIONS SUPERSEDE S.O.D.  
 MEASURE  
 DO NOT SCALE  
 THIS DRAWING WAS GENERATED USING CAD AND  
 MUST NOT BE ALTERED MANUALLY.

01	GENERAL REVISION & COORDINATION	CL	POB	19-06-2019
02	MINI CONTRACT TENDER	CL	POB	19-06-2019
03	SUBJECT OF REVISION	CL	POB	19-06-2019



**DIAGEO**  
PROJECT PHOENIX

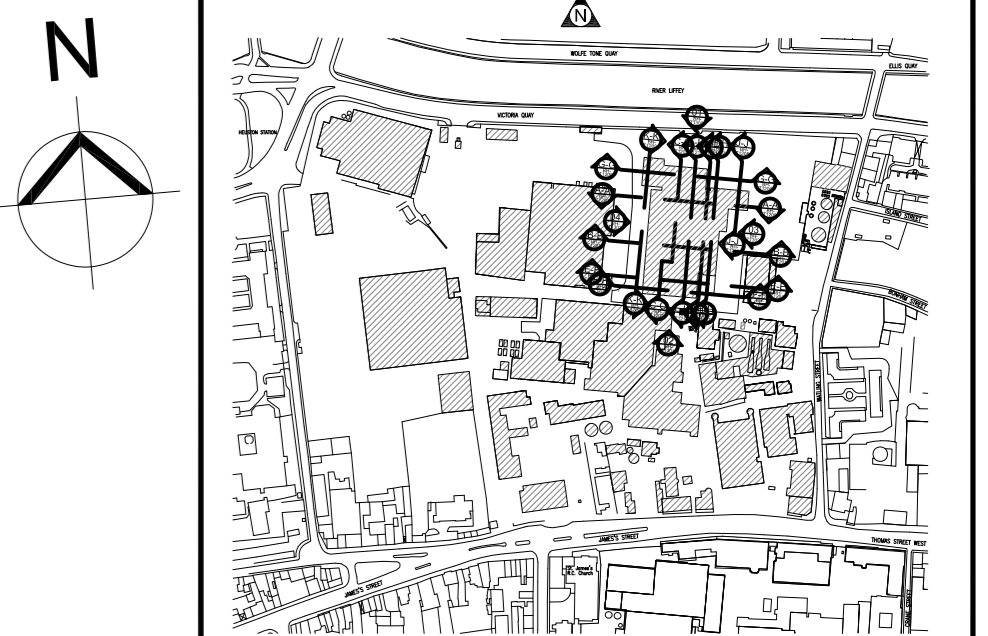
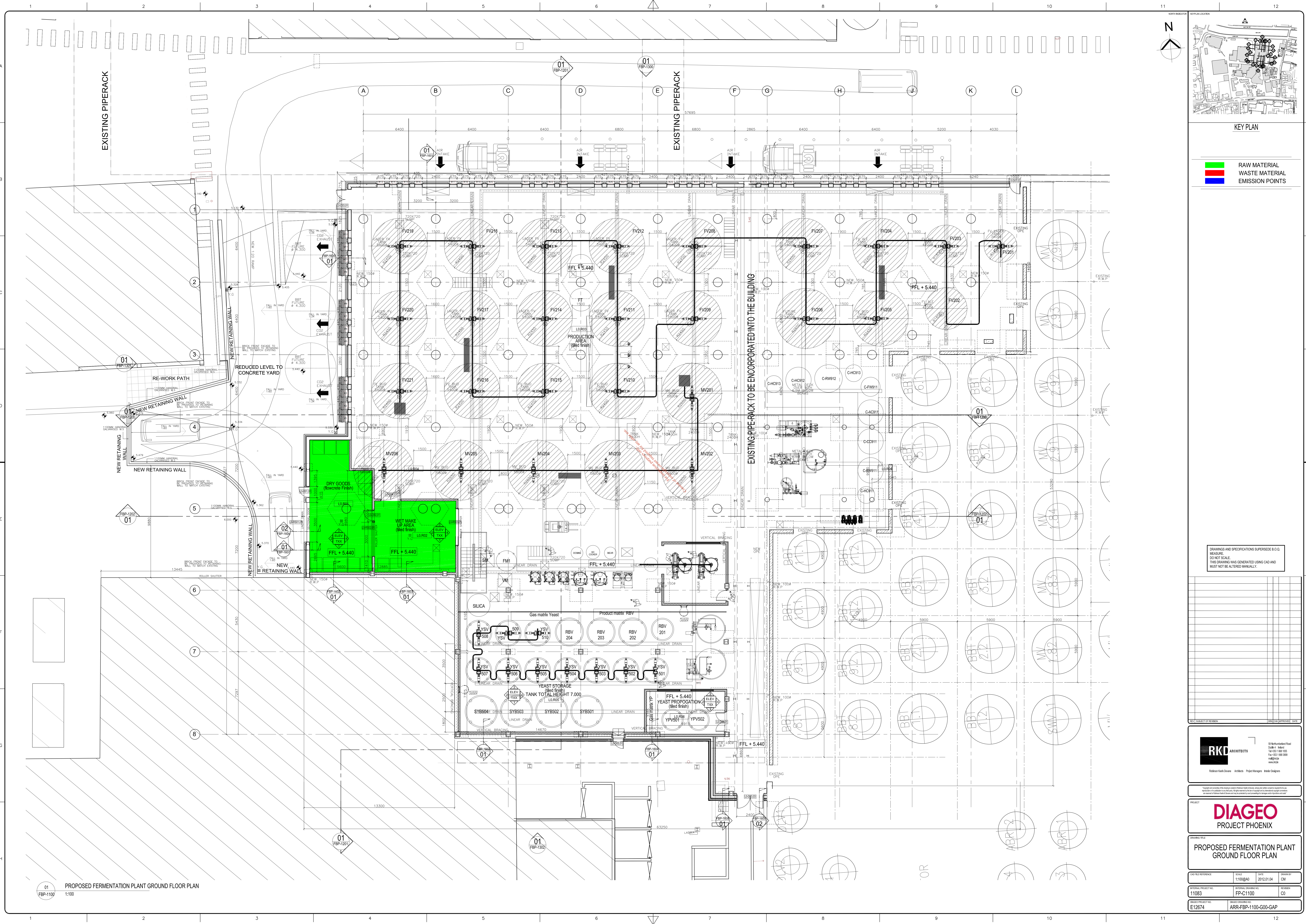
PROPOSED BREWHOUSE  
RMH FOURTH FLOOR PLAN

DATE/FILE REFERENCE	SCALE	DATE	ISSUANCE
11083	1:100@A0	2011.10.07	CL
INTERNAL PROJECT NO.	INTERNAL DRAWING NO.	PROJECT NO.	REVISION
E12674	BH-T1107		T1

01 PROPOSED RMH FOURTH FLOOR PLAN  
1:100

TENDER

All dimensions to be checked on site. Report dimensions like preference over scaled dimensions. Any errors or discrepancies to be reported to the Architects. This drawing may not be altered or modified by the recipient.



**KEY PLAN**

■ RAW MATERIAL  
■ WASTE MATERIAL  
■ EMISSION POINTS

DRAWINGS AND SPECIFICATIONS SUPERSEDE B.O.D. MEASURE.  
 DO NOT SCALE.  
 THIS DRAWING WAS GENERATED USING CAD AND MUST NOT BE ALTERED MANUALLY.

**RKD ARCHITECTS**

55 Hawthorne Road  
 Suite 100  
 San Jose, CA 95128  
 Tel: 415.938.8888  
 Fax: 415.938.8889  
 www.rkd.com

Richard Kirk Deane Architects Project Managers Interior Designers

**DIAGEO**

PROJECT PHOENIX

PROPOSED FERMENTATION PLANT  
GROUND FLOOR PLAN

DATE	DATE	BY	CHKD
1:100/80	2012/01/04	CM	
PROJECT NO.	PROJECT NAME	SCALE	
11083	FP-C1100	CO	
PROJECT NO.	PROJECT NAME	SCALE	
E12674	ARR-FBP-1100-G00-GAP		

01  
 FBP-1100  
 PROPOSED FERMENTATION PLANT GROUND FLOOR PLAN  
 1:100

## **Attachment H.2 Recovery/Disposal of Solid & Liquid Wastes**

This attachment contains the following:

- H2.1 List of Waste Collection Contractors
- H2.2 List of Waste Facilities
- H2.3 List of Wastes Generated at Diageo St. James's Gate Brewery

*For inspection purposes only.  
Consent of copyright owner required for any other use.*

**H2.1: Waste Collection Contractors**

<b>Collection Contractor</b>	<b>Waste Collection Permit</b>	<b>Issuing Authority</b>
Crumb Rubber, Dundalk	WCP-DC-08-1136-01	Dublin City Council
Enva Ireland Ltd.	WCP-DC-08-1116-01	Dublin City Council
Frylite Ireland Ltd.	WCP-MO-09-0624-01	Mayo County Council
Glassco Recycling Limited (Rehab Recycling)	WCP-DC-08-1150-01	Dublin City Council
Greenstar Environmental Services Limited	WCP-DC-08-1120-01	Dublin City Council
Greyhound Recycling and Recovery Ltd.	WCP-DC-08-1154-01	Dublin City Council
Indaver Ireland / Cyril McGuinness	WCP-DC-08-1139-01	Dublin City Council
JDK Transport	WCP-DC-09-1245-01	Dublin City Council
John Tinnelly & Sons Ltd	WCP-MH-09-0004-01	Meath County Council
Kevin Devlin	CP D201/1	Dublin City Council
KW Forage Systems Ltd.	WCP-DC-08-1146-01	Dublin City Council
Mulligan Dismantling & Salvage Ltd.	CP D 521/4A	Dublin City Council
Ormonde Organics Limited	WCP-OY-08-0595-01	Offaly County Council
P. Carney Ltd.	CP D 1003/7	Dublin City Council
Pacon Waste & Recycling Ltd.	WCP-DC-08-1149-01	Dublin City Council
Rilta Environmental Limited	WCP-DC-08-1124-01	Dublin City Council
John Malone Transport	CP D 1072/8	Dublin City Council
SRCL Ltd.	WCP-DC-09-1178-01	Dublin City Council
The Hammond Lane Metal Company Limited	WCP-DC-09-1184-01	Dublin City Council



**H2.2: Waste Licences and Permits**

Waste Contractor	Waste Site	Waste Licence/Permit	Issuing Authority
Behan Land Restoration		W0247-01	Environmental Protection Agency
Crumb Rubber		WP 2007/01	Louth County Council
Enva Ireland		W0184-01	Environmental Protection Agency
Frylite		LN/0811	Department of Environment (NI)
Glassco Recycling Limited		WFP-KE-09-0357-01	Kildare County Council
Greenstar Environmental		W0183-01	Environmental Protection Agency
Greyhound Recycling		W0095-01	Environmental Protection Agency
Hammond Lane Metal Company		WFP-DC-09-0013-01	Dublin City Council
Indaver Ireland		W0036-02	Environmental Protection Agency
John Tinnellys & Sons Limited		WAMEX22/1	Department of Environment (NI)
Murphy Concrete Manufacturing Limited		W0129-02	Environmental Protection Agency
Oxygen Environmental		W0152-01	Environmental Protection Agency
P. Carney Ltd		P0402-01	Environmental Protection Agency
Pacon Waste & Recycling		WPT 122	Fingal County Council
Rehab Enterprises Limited		WFP-DS-10-0008-03	South Dublin County Council
Rilta Environmental Limited		W0192-03	Environmental Protection Agency
SRCL		W055-02	Environmental Protection Agency

**H2.3: Wastes Generated at Diageo St. James's Gate Brewery**

(a) Name	(b) Description	(c) Source	(d) Storage	(e) Amount		(f) Period of Generation	(g) Analysis	(h)		(i) Waste Category
				t/month	m <sup>3</sup> /month			EWC	Hazardous	
Lab smalls	Waste materials generated within the laboratories.	Site Laboratory	Within the dedicated flammable storage cabinets/waste storage areas within the respective laboratories.	0.001	Not applicable	Routine	Not required	06 04 04	Y	Not applicable
Waste laboratory materials	Waste materials generated within the laboratories.	Site Laboratory	Within the dedicated flammable storage cabinets/waste storage areas within the respective laboratories.	0.02	Not applicable	Routine	Not required	07 01 03	Y	Not applicable
Waste ink cartridges	Ink cartridges and other consumable printing inks generated throughout the site (in particular the office areas).	Site wide	Dedicated collection areas within each office area before transfer to the waste storage area for collection.	0.01	Not applicable	Routine	Not required	08 03 12	Y	Not applicable
Waste oil	Waste oil from the fuelling station on the Lower Level or from maintenance activities throughout the site.	Site wide	Within dedicated bunded containers located in the waste storage area.	0.02	Not applicable	Routine	Not required	13 02 08	Y	Not applicable

(a) Name	(b) Description	(c) Source	(d) Storage	(e) Amount		(f) Period of Generation	(g) Analysis	(h)		(i) Waste Category
				t/month	m <sup>3</sup> /month			EWC	Hazardous	
Interceptor Waste	Waste from cleaning/emptying of the oils interceptors.	Oil interceptors	Collected from the interceptors by the cleaning contractor and taken directly offsite to the treatment/disposal facility.	1.3	Not applicable	Irregular	Not required	13 05 07	Y	Not applicable
Waste diesel	Waste oil from the fuelling station on the Lower Level or from maintenance activities throughout the site.	Garage/oil tanks/CHP plant	Within dedicated bunded containers located in the waste storage area.	0.02	Not applicable	Irregular	Not required	13 07 03	Y	Not applicable
Oily waste	Waste from cleaning/emptying of the oils interceptors.	Garage/oil tanks/CHP plant	Collected from the interceptors by the cleaning contractor and taken directly offsite to the treatment/disposal facility.	0.08	Not applicable	Routine	Not required	13 08 02	Y	Not applicable
Laboratory waste	Waste materials generated within the laboratories.	Site Laboratory	Within the dedicated flammable storage cabinets/waste storage areas within the respective laboratories.	0.01	Not applicable	Routine	Not required	14 06 02	Y	Not applicable

(a) Name	(b) Description	(c) Source	(d) Storage	(e) Amount		(f) Period of Generation	(g) Analysis	(h)		(i) Waste Category
				t/month	m <sup>3</sup> /month			EWC	Hazardous	
				Laboratory waste	Waste materials generated within the laboratories.			Site Laboratory	Within the dedicated flammable storage cabinets/waste storage areas within the respective laboratories.	
Empty metal containers	Empty drums that contained acids, caustics, cleaning materials, detergents, oils, solvents or similar materials.	Site wide	Dedicated areas within the area in which the material is used, and designated waste storage areas on the Upper and Lower Levels prior to collection.	0.02	Not applicable	Routine	Not required	15 01 10	Y	Not applicable
Empty plastic containers	Empty drums that contained acids, caustics, cleaning materials, detergents, oils, solvents or similar materials.	Site wide	Dedicated areas within the area in which the material is used, and designated waste storage areas on the Upper and Lower Levels prior to collection.	0.02	Not applicable	Routine	Not required	15 01 10	Y	Not applicable

(a) Name	(b) Description	(c) Source	(d) Storage	(e) Amount		(f) Period of Generation	(g) Analysis	(h)		(i) Waste Category
				t/month	m <sup>3</sup> /month			EWC	Hazardous	
Solid oily waste	Materials (e.g. cloths, filters, packaging materials) contaminated with oil.	Garage/oil tanks/CHP plant	Dedicated storage location within the General Stores or the waste storage area, depending upon the location in which it is generated.	0.43	Not applicable	Routine	Not required	15 02 02	Y	Not applicable
Waste filters	Waste filters generated during inspection and maintenance of plant and equipment.	Site wide/Utilities	Dedicated storage location within the General Stores or the waste storage area, depending upon the location in which it is generated.	0.02	Not applicable	Routine	Not required	16 01 07	Y	Not applicable
Waste aerosol cans	Waste aerosol cans from maintenance and construction related activities.	Site wide	Dedicated storage location within the General Stores or the waste storage area, depending upon the location in which it is generated.	0.03	Not applicable	Routine	Not required	16 05 04	Y	Not applicable
Waste laboratory materials	Waste materials generated within the laboratories.	Site Laboratory	Within the dedicated flammable storage cabinets/waste storage areas within the respective laboratories.	0.02	Not applicable	Routine	Not required	16 05 06	Y	Not applicable

(a) Name	(b) Description	(c) Source	(d) Storage	(e) Amount		(f) Period of Generation	(g) Analysis	(h)		(i) Waste Category
				t/month	m <sup>3</sup> /month			EWC	Hazardous	
Waste refrigerant	Waste refrigerants from the refrigeration systems generated during maintenance/inspection activities.	Utilities / refrigeration plant	Within the Utilities/Refrigeration plant immediately prior to collection from the site.	0.2	Not applicable	Irregular	Not required	16 05 08	Y	Not applicable
Batteries	Lead acid and other hazardous batteries.	Site wide	Dedicated collection points around the site and within the waste storage area.	0.01	Not applicable	Routine	Not required	16 06 01	Y	Not applicable
Oil contaminated waste	Materials (e.g. cloths, filters, packaging materials) contaminated with oil.	Garage/oil tanks/CHP plant	Dedicated storage location within the General Stores or the waste storage area, depending upon the location in which it is generated.	0.15	Not applicable	Routine	Not required	16 07 08	Y	Not applicable
Medical waste	Wastes generated within the Medical Centre or at the First Aid Stations.	Medical Department	Within a dedicated waste storage area in the Medical Centre.	4.4	Not applicable	Routine	Not required	18 01 03	Y	Not applicable
Waste kieselguhr	Waste kieselguhr from filtering within the production process.	Brewhouse	Dedicated collection bin within the brewhouse.	0.8	Not applicable	Routine	Not required	02 03 01	N	Not applicable

(a) Name	(b) Description	(c) Source	(d) Storage	(e) Amount		(f) Period of Generation	(g) Analysis	(h)		(i) Waste Category
				t/month	m <sup>3</sup> /month			EWC	Hazardous	
Effluent plant screenings	Solid material screened from the effluent plant (e.g. grain).	Effluent plant	Dedicated collection skips at the Effluent Treatment Plant on the Lower Level.	27	Not applicable	Routine	Not required	02 07 05	N	Not applicable
Waste toner cartridges	Toner & ink cartridges and other consumable printing inks generated throughout the site (in particular the office areas).	Offices	Dedicated collection areas within each office area before transfer to the waste storage area for collection.	0.05	Not applicable	Routine	Not required	08 03 18	N	Not applicable
Cardboard	Waste cardboard packaging from incoming materials.	Site wide	Waste storage area at the intake areas for raw materials and within the storage area for recyclable waste on the Lower Level.	2.4	Not applicable	Routine	Not required	15 01 01	N	Not applicable
Plastic	Plastic packaging materials from the intake of materials (raw and service) and from packaging for outgoing production.	Site wide	Dedicated plastic bins within the material intake areas and the keg plant.	0.2	Not applicable	Routine	Not required	15 01 02	N	Not applicable

(a) Name	(b) Description	(c) Source	(d) Storage	(e) Amount		(f) Period of Generation	(g) Analysis	(h)		(i) Waste Category
				t/month	m <sup>3</sup> /month			EWC	Hazardous	
Wood	Waste wood, including packaging wastes and wooden waste associated with routine site maintenance.	Site wide	Within the storage area for recyclable waste on the Lower Level.	4.0	Not applicable	Routine	Not required	15 01 03	N	Not applicable
Waste kegs	Damaged and unusable kegs from the keg yard and keg plant.	Keg plant	Dedicated area in the keg yard pending collection and recovery off site.	2.5	Not applicable	Routine	Not required	15 01 04	N	Not applicable
Glass	Glass bottles and other packaging from the canteen/catering areas, from laboratory activities, and glass packaging/containers associated with production activities.	Site wide	Dedicated glass recycling areas within the canteen/catering department and within the storage area for recyclable materials on the Lower Level.	5.0	Not applicable	Routine	Not required	15 01 07	N	Not applicable
Waste tyres	Waste tyres from the maintenance of forklift trucks and other site vehicles.	Vehicle maintenance	Removal from the site by the contractor responsible for vehicle maintenance.	0.6	Not applicable	Irregular	Not required	16 01 03	N	Not applicable



(a) Name	(b) Description	(c) Source	(d) Storage	(e) Amount		(f) Period of Generation	(g) Analysis	(h)		(i) Waste Category
				t/month	m <sup>3</sup> /month			EWC	Hazardous	
Construction & Demolition Waste	Demolition and/or excavation waste from building/development works.	Site wide	Within dedicated skips or waste holding areas associated with the particular building/development works.	-	Not applicable	Irregular	Not required	17 01 07	N	Not applicable
Scrap Metal	Waste metals, including packaging wastes, metal drums and metal waste associated with routine site maintenance.	Site wide	Within the storage area for recyclable waste on the Lower Level.	4.5	Not applicable	Routine	Not required	17 04 07	N	Not applicable
Cardboard	Waste cardboard packaging from incoming materials.	Site wide	Waste storage area at the intake areas for raw materials and within the storage area for recyclable waste on the Lower Level.	2.0	Not applicable	Routine	Not required	20 01 01	N	Not applicable
Paper	Paper from office and administration areas.	Site wide	Dedicated waste paper bins within the office/administration areas.	1.8	Not applicable	Routine	Not required	20 01 01	N	Not applicable

(a) Name	(b) Description	(c) Source	(d) Storage	(e) Amount		(f) Period of Generation	(g) Analysis	(h)		(i) Waste Category
				t/month	m <sup>3</sup> /month			EWC	Hazardous	
Glass	Glass bottles and other packaging from the canteen/catering areas, from laboratory activities, and glass packaging/containers associated with production activities.	Site wide	Dedicated glass recycling areas within the canteen/catering department and within the storage area for recyclable materials on the Lower Level.	4.0	Not applicable	Routine	Not required	20 01 02	N	Not applicable
Food Waste	Food waste from the canteen and catering department, together with other food waste arising in other areas of the site.	Site wide	Food waste from the canteen and catering department is collected and stored in a dedicated area of the Catering Building; food waste in other areas of the site is collected in dedicated brown bins.	3.0	Not applicable	Routine	Not required	20 01 08	N	Not applicable
Waste Catering Oil	Waste oil from the catering department.	Canteen	Dedicated waste oil container within a bunded area in the catering department.	0.2	Not applicable	Routine	Not required	20 01 25	N	Not applicable

(a)	(b)	(c)	(d)	(e)		(f)	(g)	(h)		(i)
Name	Description	Source	Storage	Amount		Period of Generation	Analysis	EWC	Hazardous	Waste Category
				t/month	m <sup>3</sup> /month					
Compostable Waste	Food and other waste suitable for composting, arising from the canteen and catering department, and from site maintenance activities (garden-type compostable waste).	Site wide	Food waste from the canteen and catering department is collected and stored in a dedicated area of the Catering Building; food waste in other areas of the site is collected in dedicated brown bins. Waste from site maintenance is removed from the site by the maintenance contractors.	12	Not applicable	Routine	Not required	20 02 01	N	Not applicable
Dry Mixed Recyclables	A range of recyclable materials from all areas of the site, including packaging materials and office wastes.	Site wide	Within the storage area for recyclable waste on the Lower Level.	4.0	Not applicable	Routine	Not required	20 03 01	N	Not applicable
General Waste	General waste from all areas of the site	Site wide	Within dedicated waste storage areas associated with the individual areas in which the wastes are generated.	2.0	Not applicable	Routine	Not required	20 03 01	N	Not applicable

For inspection purposes only.  
Consent of copyright owner required for any other use.