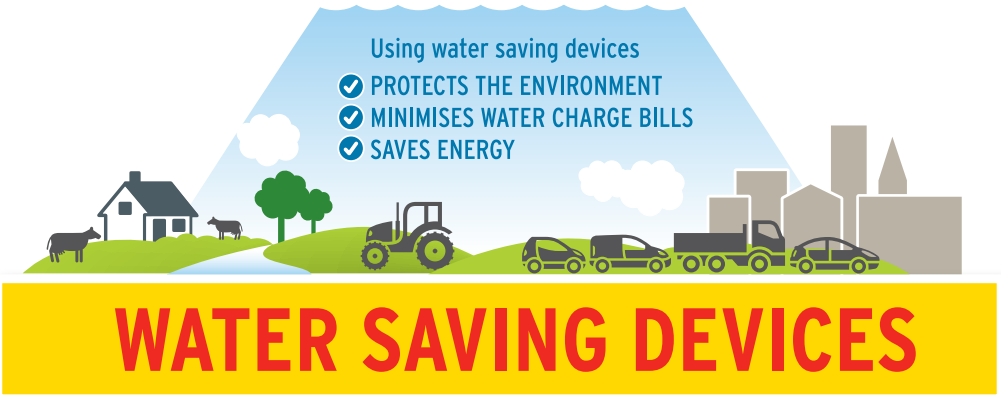


CONSERVE WATER, SAVE ENERGY AND REDUCE YOUR BILLS

IT MAKES SENSE TO SAVE WATER

Using water saving devices

- ✓ PROTECTS THE ENVIRONMENT
- ✓ MINIMISES WATER CHARGE BILLS
- ✓ SAVES ENERGY



WATER SAVING DEVICES

TOILET SYSTEMS

RETROFIT OPTIONS

Water displacement



9 LITRE CISTERN + 3 LITRE WATER SAVER = 6 LITRE CISTERN (MIN)

UP TO **9%** less water consumption

TIP: Use water bottles as a cheap option

CAUTION: Take care that the flush volume is never less than 6 litres

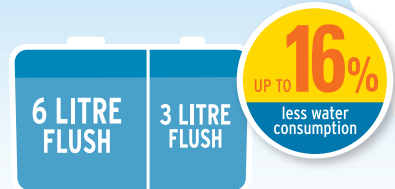
Full flush control kit (Interruptible flushing siphon)



UP TO **13%** less water consumption

NEW SYSTEMS

Dual flush



UP TO **16%** less water consumption

OTHER DOMESTIC DEVICES

LOW FLOW SHOWER HEADS

You should have an automatic compensating type shower valve to balance changes in incoming pressure and/or temperature. Seek the advice of a professional plumber.

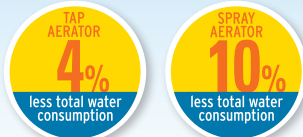


UP TO **12%** less water consumption

TIP: Save even more by cutting your shower time

AERATORS

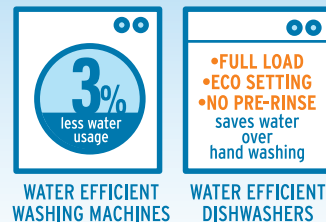
Are low cost devices which produce a large, soft, non-splashing stream.



TAP AERATOR: UP TO **4%** less total water consumption

SPRAY AERATOR: UP TO **10%** less total water consumption

EFFICIENT APPLIANCES



WATER EFFICIENT WASHING MACHINES: UP TO **3%** less water usage

WATER EFFICIENT DISHWASHERS: FULL LOAD, ECO SETTING, NO PRE-RINSE saves water over hand washing

SAVINGS SUMMARY

With little initial expense and a small change in behaviour it is possible to reduce water consumption and also to potentially save on water charges

Using less warm and hot water means heating less water resulting in reduced energy bills. Choose water and energy efficient appliances to save on bills



AS MUCH AS **40%** WATER SAVING IS POSSIBLE

SAVING WATER SAVES MONEY

SAVE UP TO **€220** IN ANNUAL ENERGY COSTS*



* Potential maximum saving of €220 or €70 for a 3 person household with an immersion heater or a gas boiler, respectively