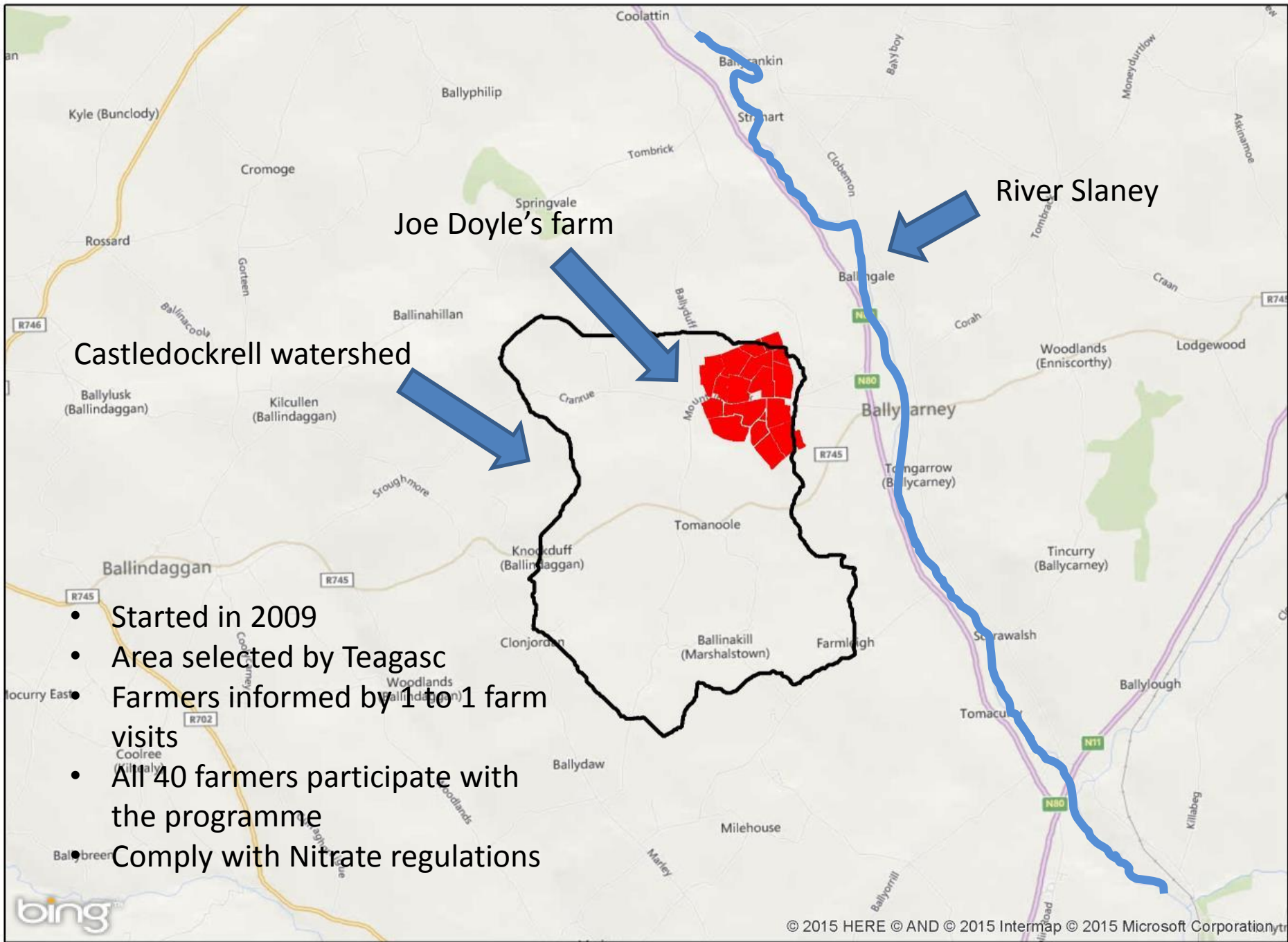


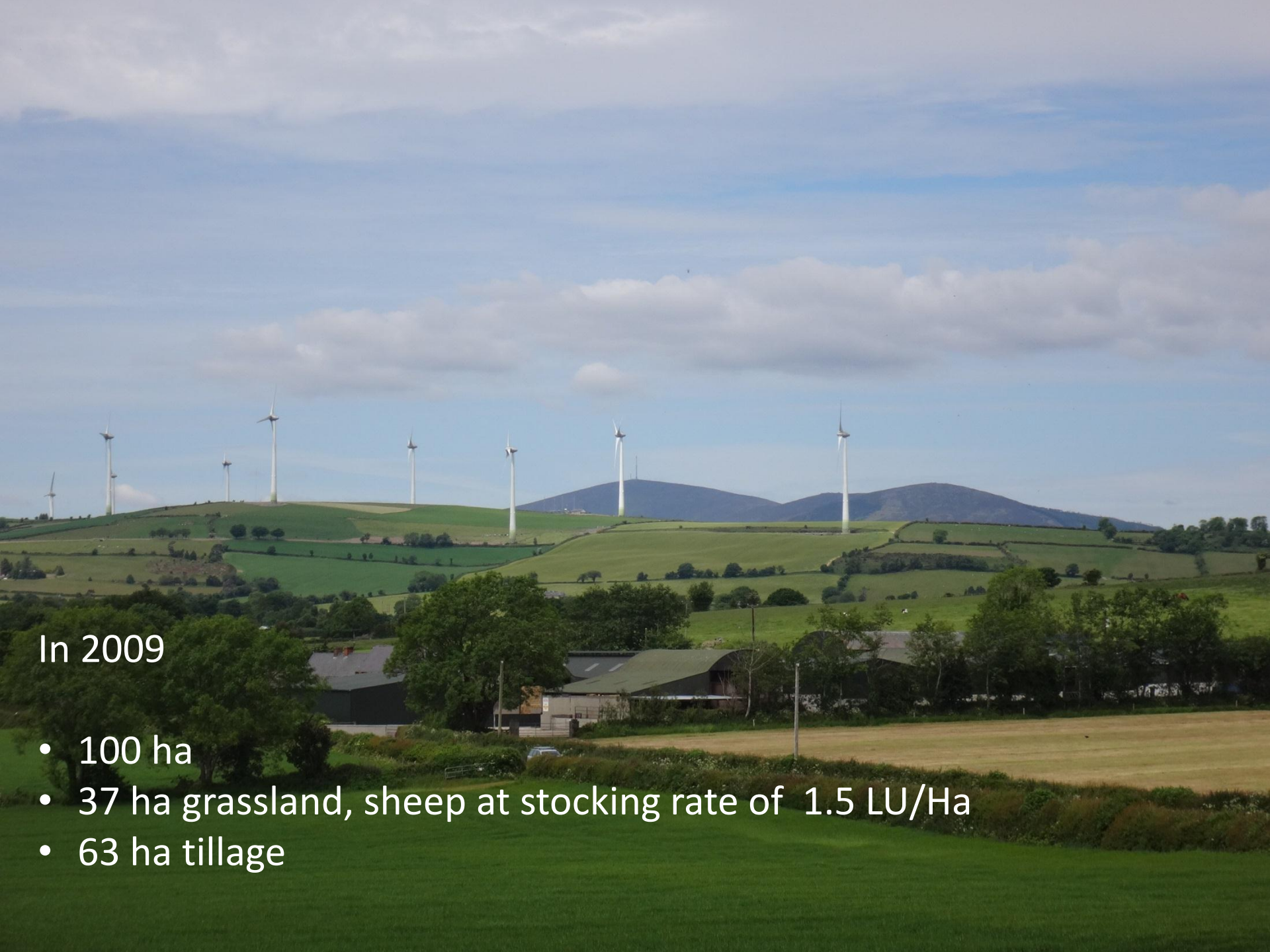
**Joe Doyle, Farmer in the Agricultural Catchments programme**

**Edward Burgess, Teagasc advisor**

**Castledockrell catchment area  
Wexford**







In 2009

- 100 ha
- 37 ha grassland, sheep at stocking rate of 1.5 LU/Ha
- 63 ha tillage



**Boost farm incomes to support his family**

**Examined options available**

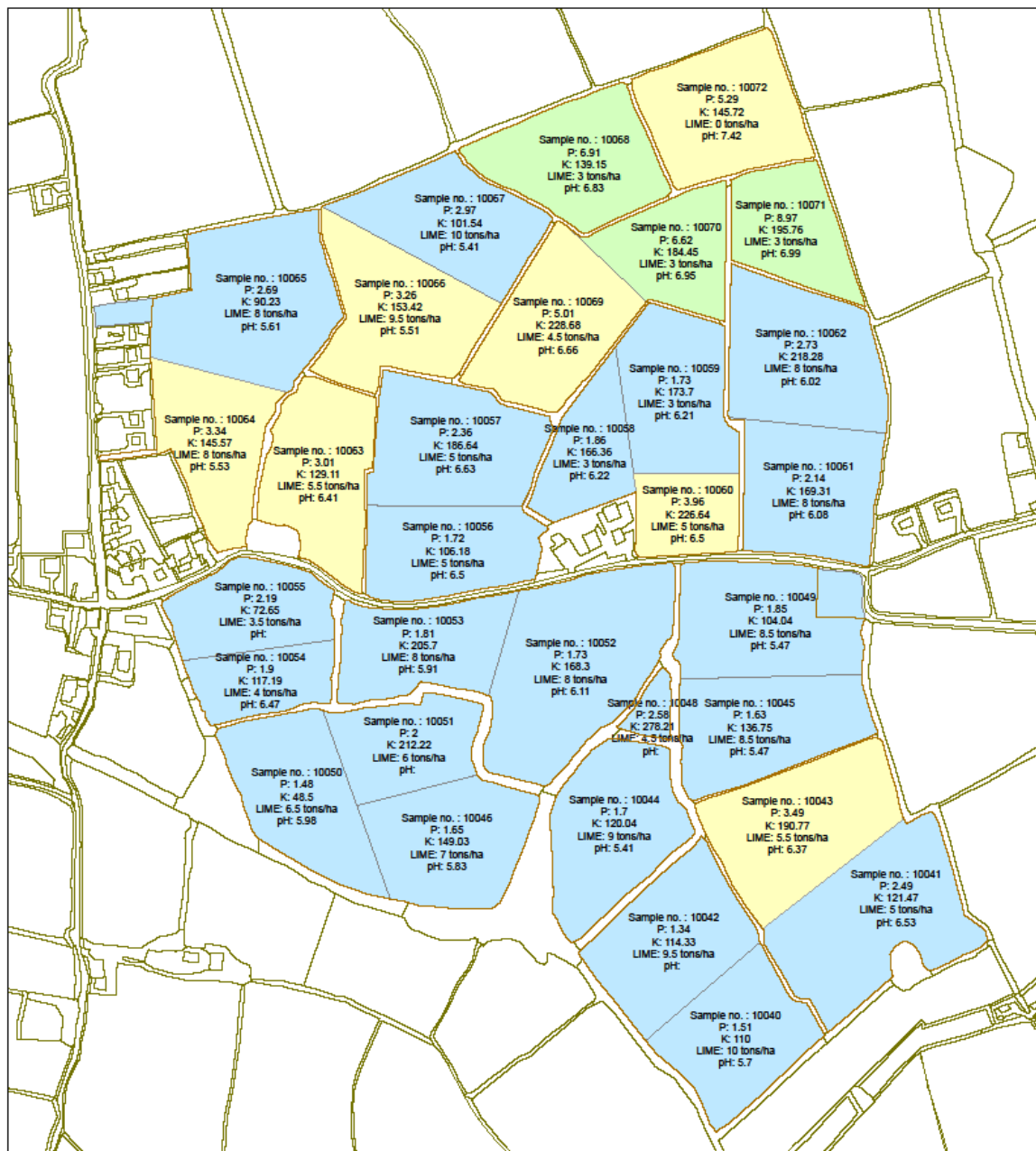


## **Changed enterprises**

- **Sheep to Dairying**
- **Intensified grassland stocking rate**
- **Increased tillage area slightly**

# Advice from the Agricultural Catchments Programme

- Nutrient Planning & soil sampling essential
- Phosphorus levels on the farm were very low
- Raise P levels to optimise crop yields



2009 Soil Test Map  
Colour coded for P



## **Tillage**

- **Pig slurry and FYM are ploughed in on day it's spread – less nitrogen loss**
- **Furrow press at ploughing – packs soils to minimise soil loss**
- **Green cover on stubble ground until 1 Dec – minimises losses**

## Tillage

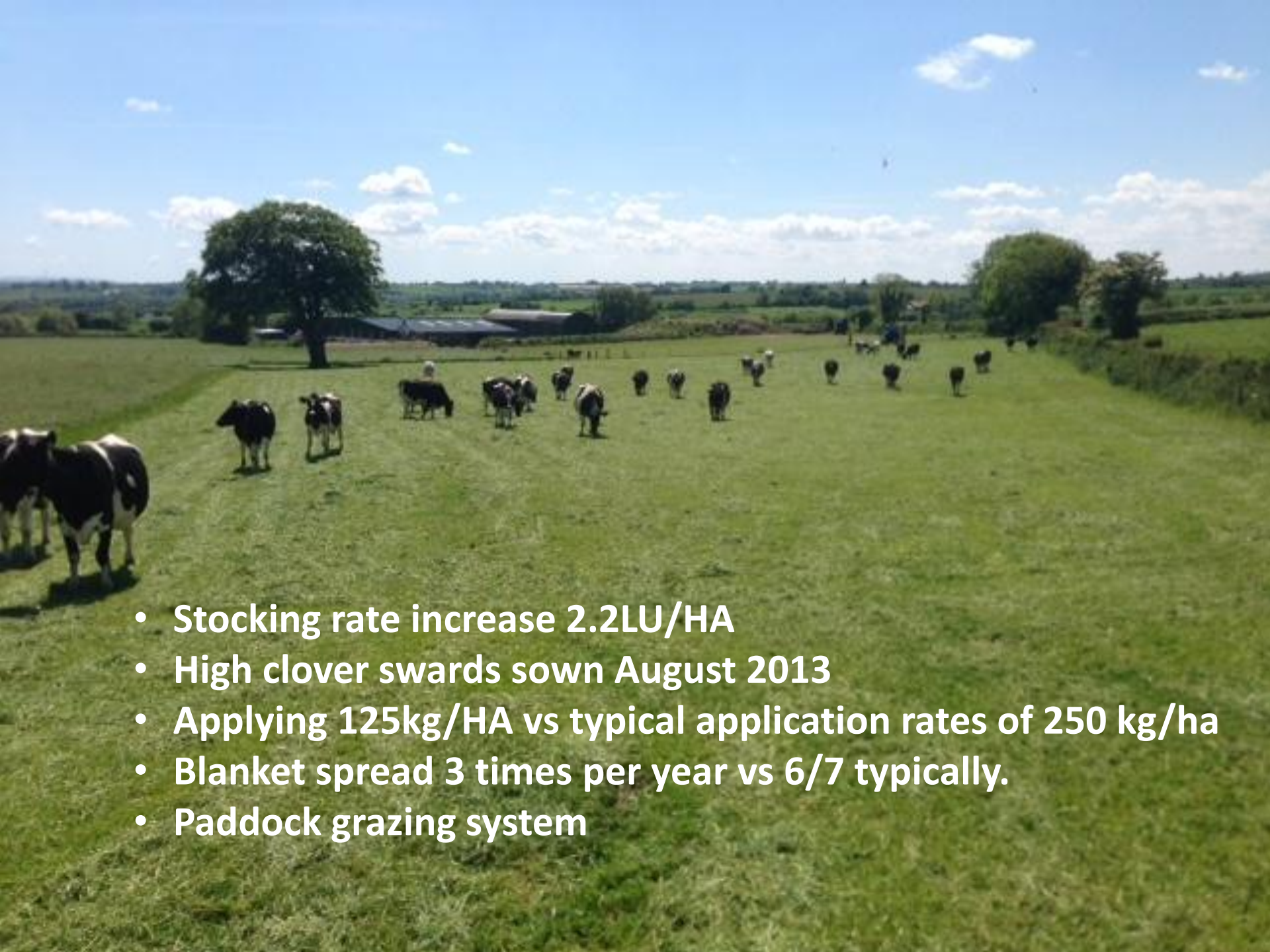
- Fertiliser is placed with seed at sowing – increases yield



## Tillage

- Better nutrient management from soil sampling
- Improved average yields across the farm
- More Barley achieving malting standard giving improved margins – Nitrogen and Protein %





- Stocking rate increase 2.2LU/HA
- High clover swards sown August 2013
- Applying 125kg/HA vs typical application rates of 250 kg/ha
- Blanket spread 3 times per year vs 6/7 typically.
- Paddock grazing system

A wide-angle photograph of a rural landscape. In the foreground, there is a green grassy field. In the middle ground, a yellow field is visible, with a large, leafy tree on the left side. In the background, there are more green fields and a line of trees under a cloudy sky. Two red tractors are visible in the distance, one on the left and one on the right, both facing right.

## Silage ground

- Imported Pig slurry spread in early Spring & after first cut.
- Applying 150kg/HA vs typical application rates of 250 kg/ha



- Robotic milking machine
- Milked 2.4 times per day
- Spring calving, dry for 2/3 months per year
- Top 10% in Wexford for milk quality & price in 2014



## Other environmental aspects

- All animals are straw bedded – no slurry
- Enter GLAS scheme



## **Lessons learned**

- **Nutrient planning and soil sampling essential**
- **Clover swards reduces nitrogen spreading & improves milk quality**
- **Improved farming practices (sowing, furrow press) benefits both yield and the environment**
- **Benefits of engaging with Teagasc support**



## **Priorities for the future**

- **Farm profitably to provide for our families**
- **Protect the environment**