

# **A New Direction in Public Participation**

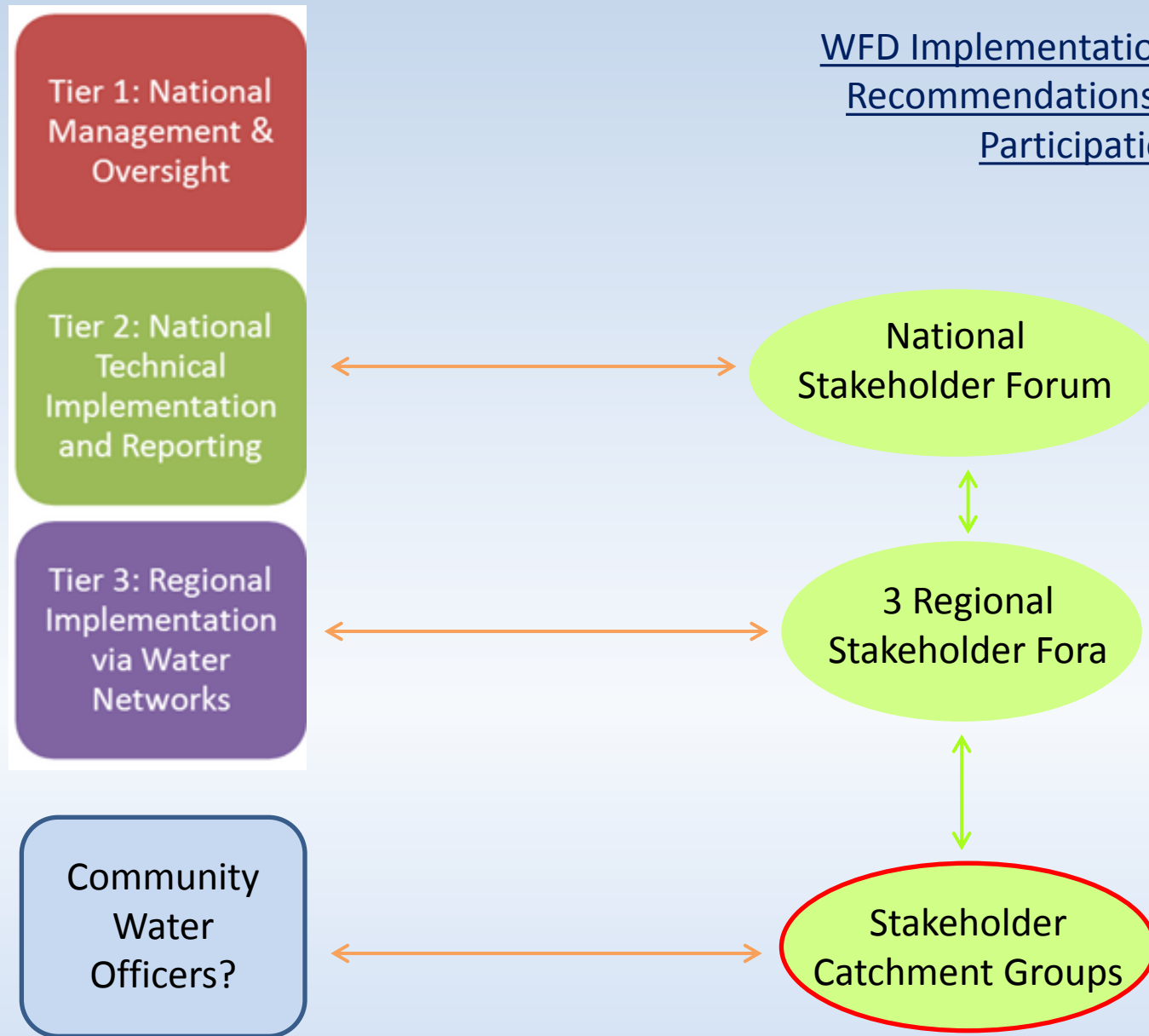
Sinead O'Brien, SWAN  
&  
Dr. Harriet Emerson, Adjust

# Three objectives of the presentation

To explain:

- SWAN's recommendations for how effective public participation can be delivered alongside the 3-Tier administration structure;
- how this would work & support delivery of Integrated Catchment Management;
- what governance challenges need to be addressed, for this public participation to be successful.

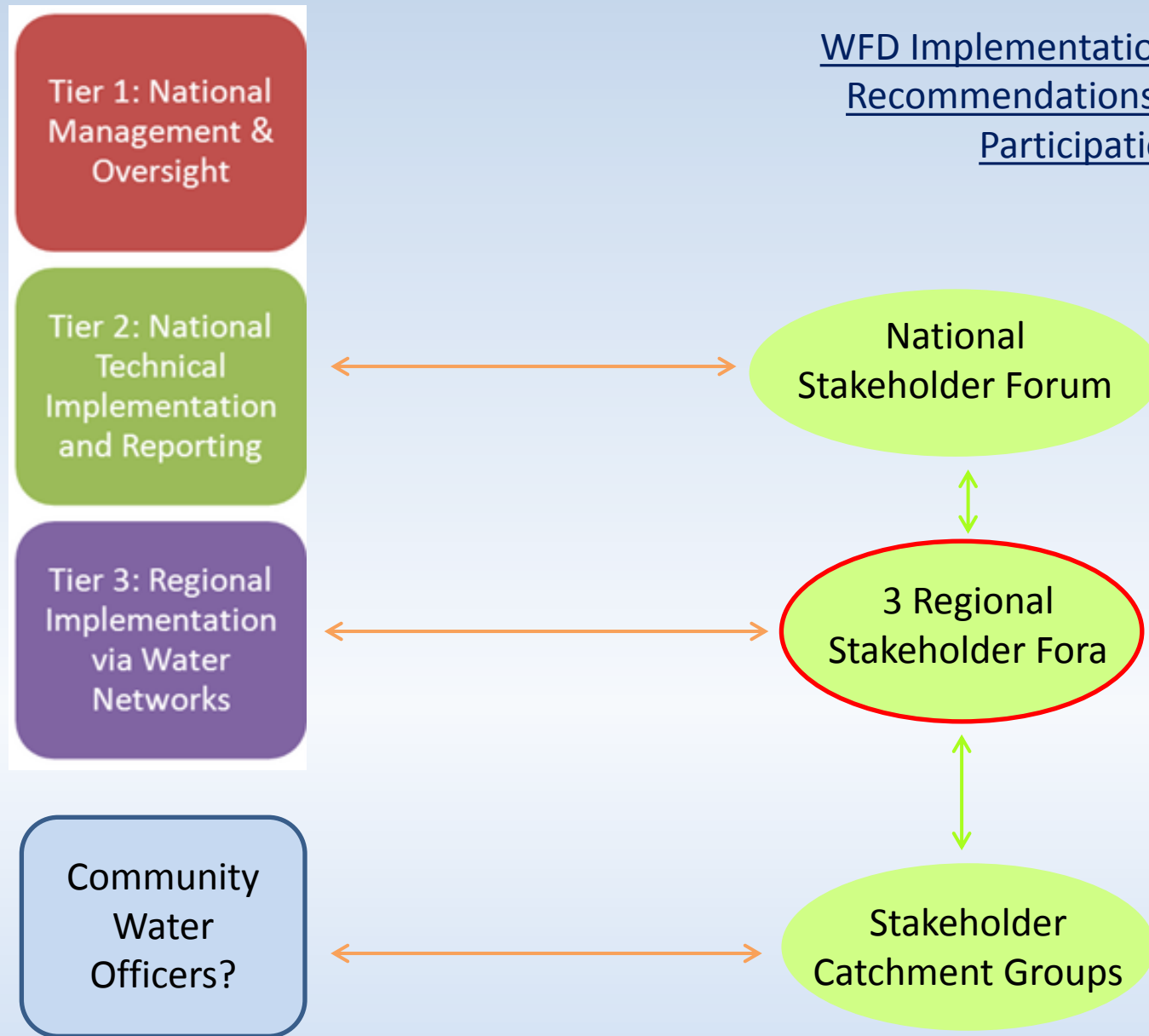
WFD Implementation Tiers with  
Recommendations for Public  
Participation







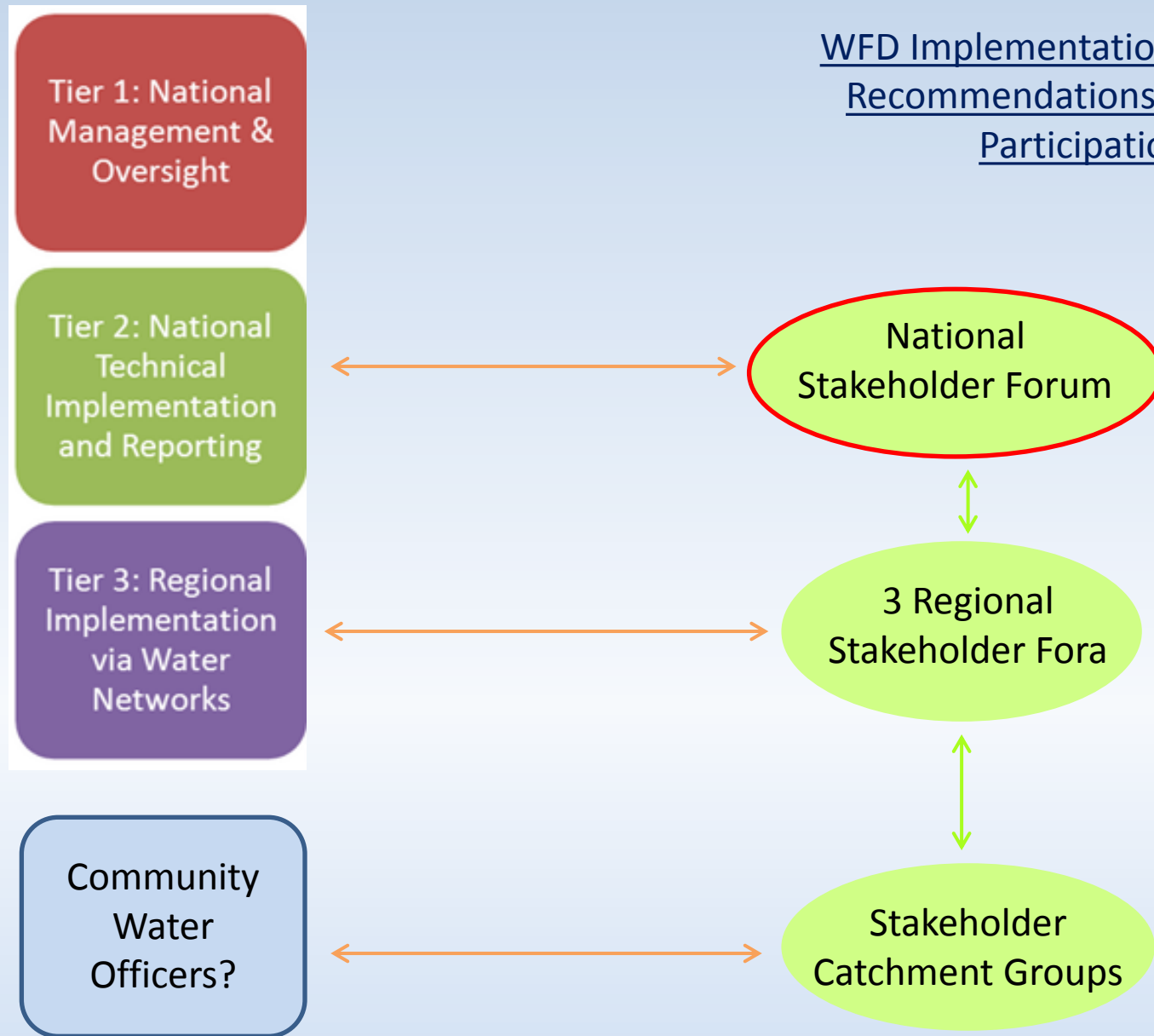
## WFD Implementation Tiers with Recommendations for Public Participation







## WFD Implementation Tiers with Recommendations for Public Participation



# “Stakeholders” contribution to WFD Implementation

“stakeholders” collectively contribute value in two ways:

- **local action:** e.g. Stakeholder Sub-Catchment Groups
- **policy input:** primarily through Regional & National Stakeholder Fora

**BOTH** are needed for effective stakeholder engagement



# Integrated Catchment Management

A holistic & integrated approach, involving communities, in the management of land, biodiversity, water & community resources at the water catchment scale; seeking a sustainable balance between resource use and resource conservation

**Science:** EPA : ✓

**Society:**

Stakeholder engagement  
*"Building Partnerships"*

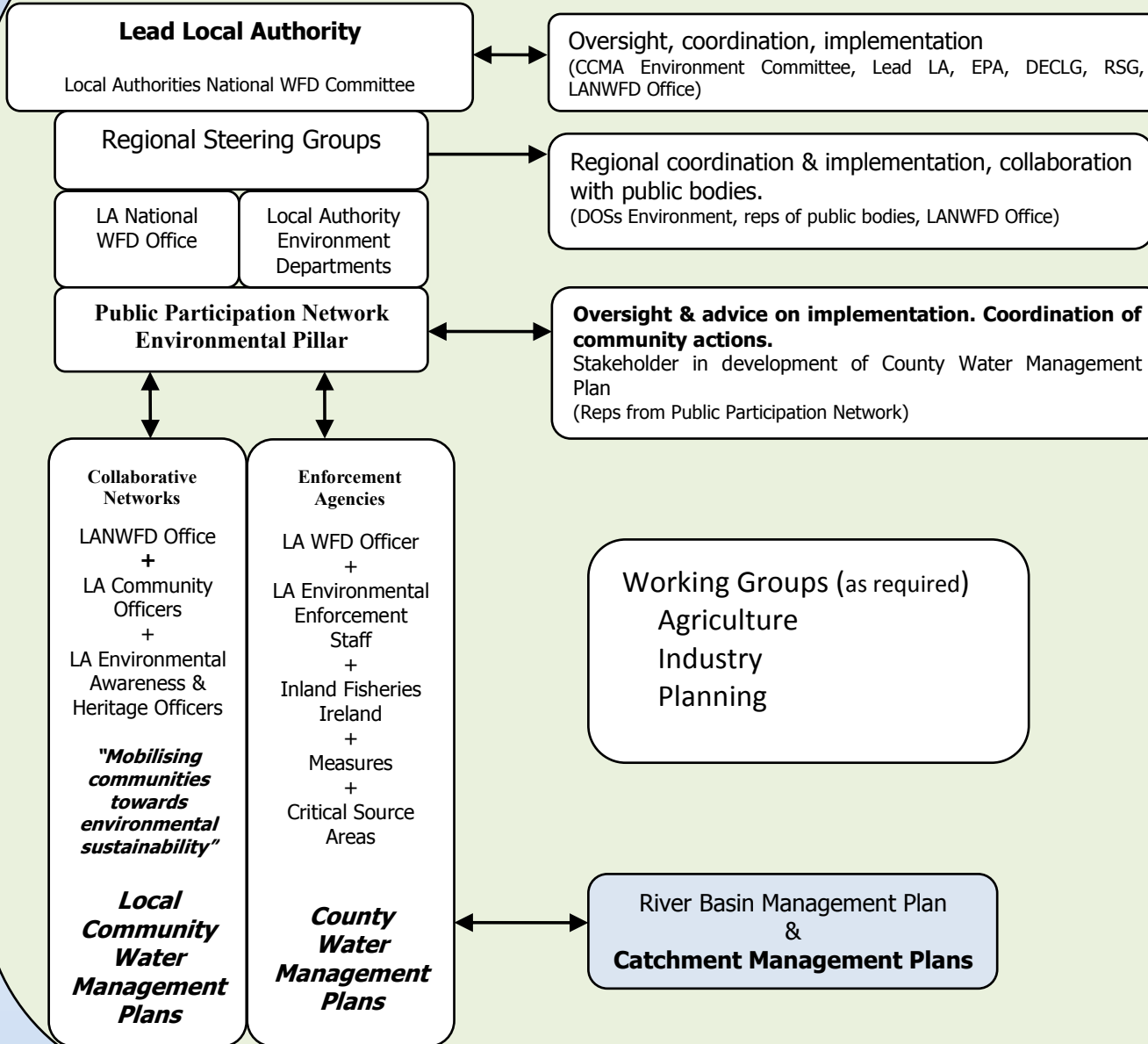


**Governance:**

Fit for purpose to deliver  
integrated catchment-  
based management?



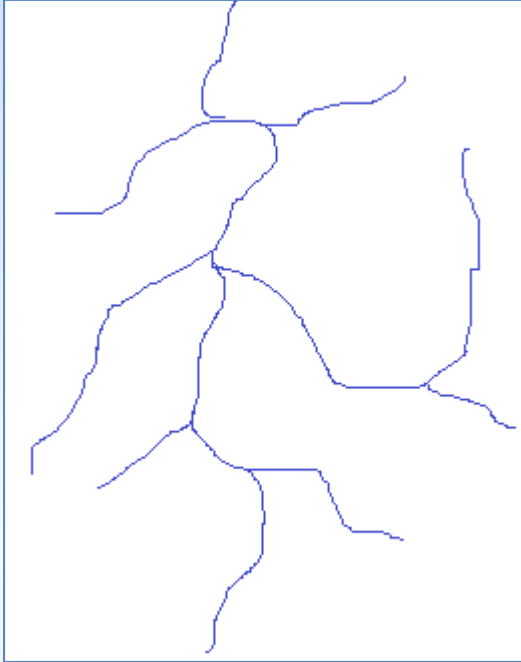
### Tier 3: Public Participation & Regional Implementation



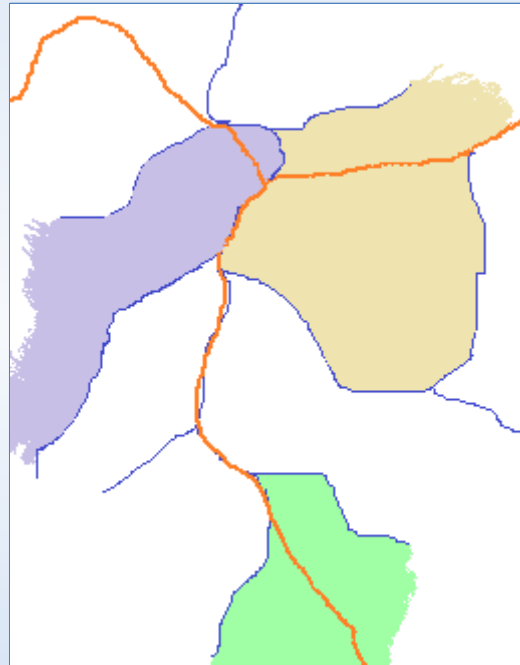
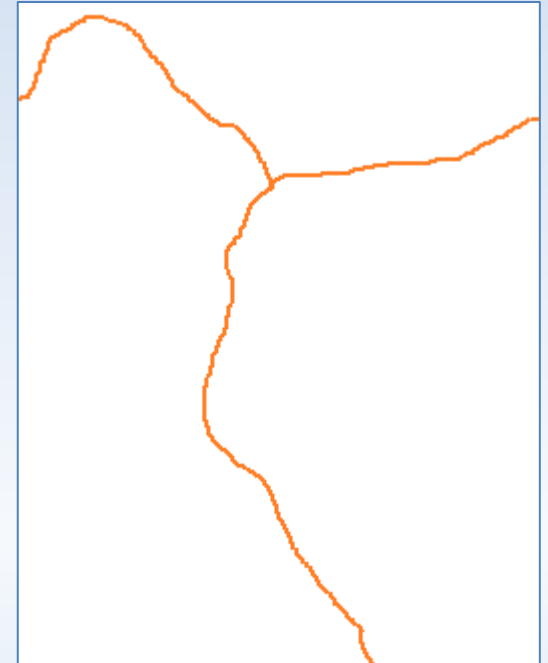
Credit: CCMA

# Challenges for Governance: Catchment Focus

Sample catchment boundaries



Sample local authority boundaries



How are these mismatches handled  
to accommodate a catchment-based  
approach?

### Tier 3: Public Participation & Regional Implementation

#### Lead Local Authority

Local Authorities National WFD Committee

Oversight, coordination, implementation  
(CCMA Environment Committee, Lead LA, EPA, DECLG, RSG, LANWFD Office)

#### Regional Steering Groups

Regional coordination & implementation, collaboration with public bodies.  
(DOSs Environment, reps of public bodies, LANWFD Office)

LA National WFD Office

Local Authority Environment Departments

#### Public Participation Network Environmental Pillar

**Oversight & advice on implementation. Coordination of community actions.**  
Stakeholder in development of County Water Management Plan  
(Reps from Public Participation Network)

#### Collaborative Networks

LANWFD Office  
+  
LA Community Officers  
+  
LA Environmental Awareness & Heritage Officers

*"Mobilising communities towards environmental sustainability"*

**Local Community Water Management Plans**

#### Enforcement Agencies

LA WFD Officer  
+  
LA Environmental Enforcement Staff  
+  
Inland Fisheries Ireland  
+  
Measures  
+  
Critical Source Areas

**County Water Management Plans**

Working Groups (as required)  
Agriculture  
Industry  
Planning

River Basin Management Plan &  
**Catchment Management Plans**



## Challenges for Governance: Integration

Structures proposed need to ensure:

- collaborative engagement of neighbouring authorities
- positive collaborative engagement between state agencies
- clear direction to staff in these agencies that an important element of their work is now to participate in WFD delivery

## **Improve integrated governance for stakeholder engagement: 4 recommendations**

1. Hire staff with appropriate skill-sets, Equip existing staff with appropriate skills & support and engage neutral facilitators
2. Adopt a culture of openness & transparency
3. Review the new governance structures put in place
4. Raise awareness and provide information

# Don't misuse Public Participation Networks

- The PPNs form a nominating network only
- DECLG May 2014 'GUIDELINES FOR PUBLIC PARTICIPATION NETWORKS':  
*"The PPN facilitates input by the public into local government through a structure that ensures public participation and representation on decision-making committees and bodies within local government".*
- Severe limitations to the role PPNs in WFD implementation:
  - PPN appropriate source of nominees to WFD stakeholder bodies but
  - cannot constitute or replace local citizen action groups,
  - They are Local Authority bodies so don't align with catchments
  - Represent the community & voluntary, social inclusion and environmental organisations, but not commercial interests such as business, industry and farming.

**Make clear provision for engagement for ALL stakeholders**

## The Outcome is Your Choice

- Whether or not the management leg of the stool can work effectively in an integrated manner with a catchment focus, and involve stakeholders meaningfully - as outlined - is the responsibility of the administration.
- You are the experts on how to make that happen
- Whether you do is your choice – and a test of your commitment to both ICM and stakeholder engagement.



