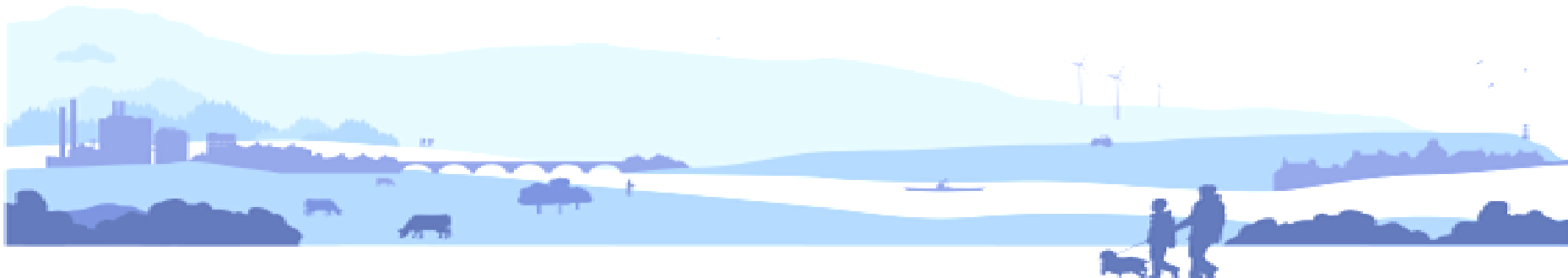


# Water Framework Directive: The Scottish Experience

David Harley  
Water & Land Manager  
SEPA



# SEPA's role

Environmental assessment

RBMP production

Regulation (Controlled Activities Regulations)

- Licencing
- Inspection
- Enforcement
- Incident response

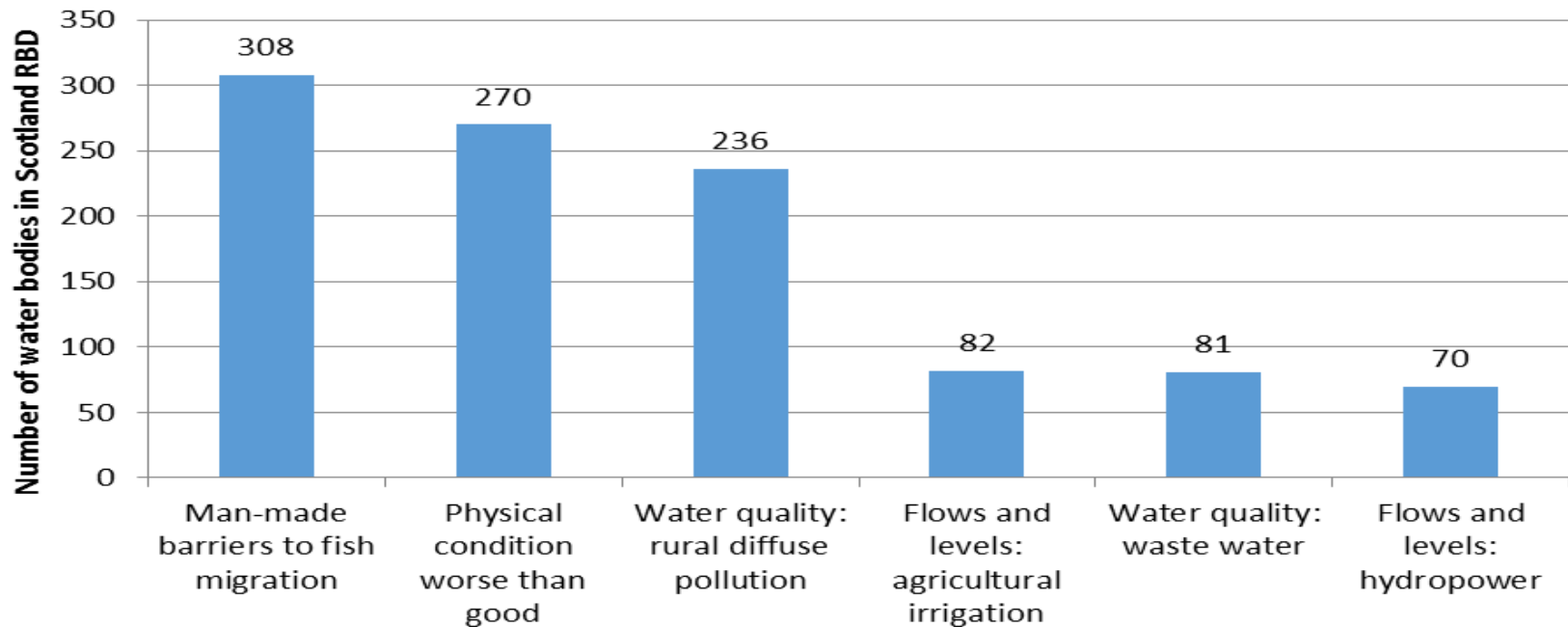
Partnership

Funding

# How are we doing?

- Meeting targets associated with licence reviews (approx 50% of water bodies targeted, 1000km) for improvement
- Shortfall associated with diffuse pollution and restoration of physical impacts – LAND USE
- Classification problematic as a performance measure in first cycle – ‘noise’ due to changing standards, water body changes, improved data.

# Key pressures on the water environment (Scotland RBD)



# Water Industry - Glasgow





# Diffuse Pollution (rural)



# Priority catchment approach

## Evidence Base



## Awareness Raising



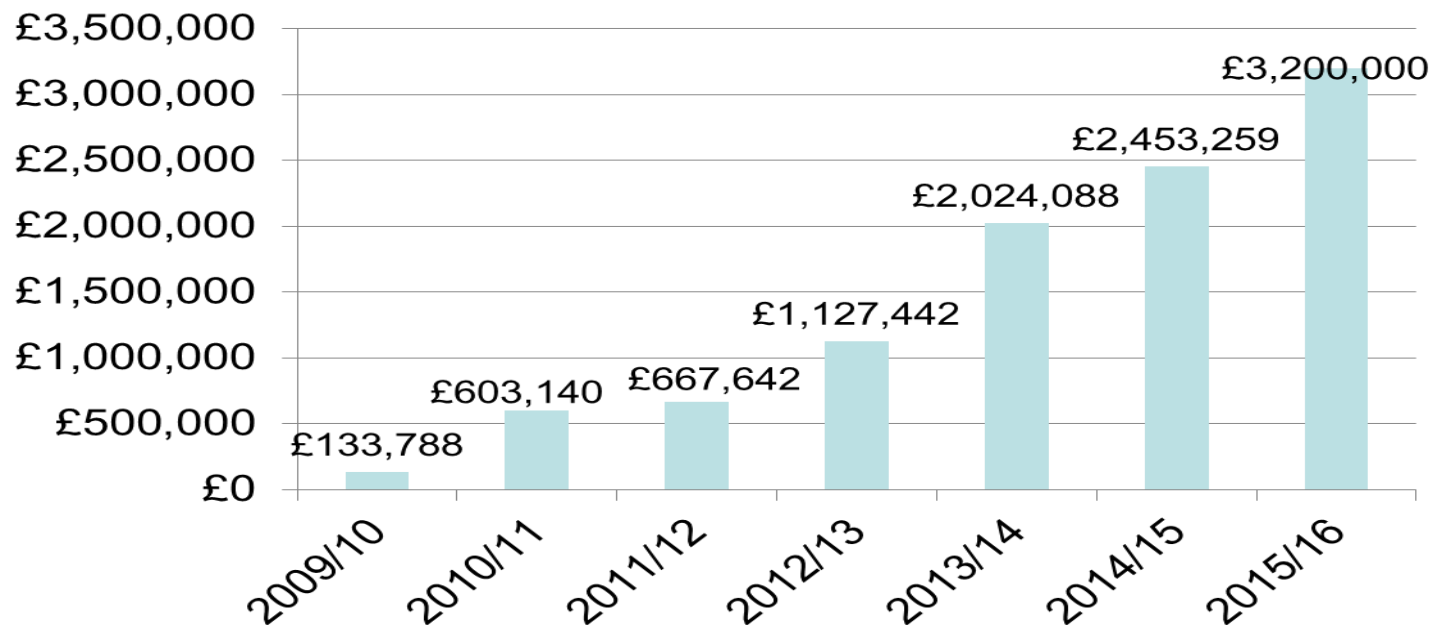
## Targeted Engagement



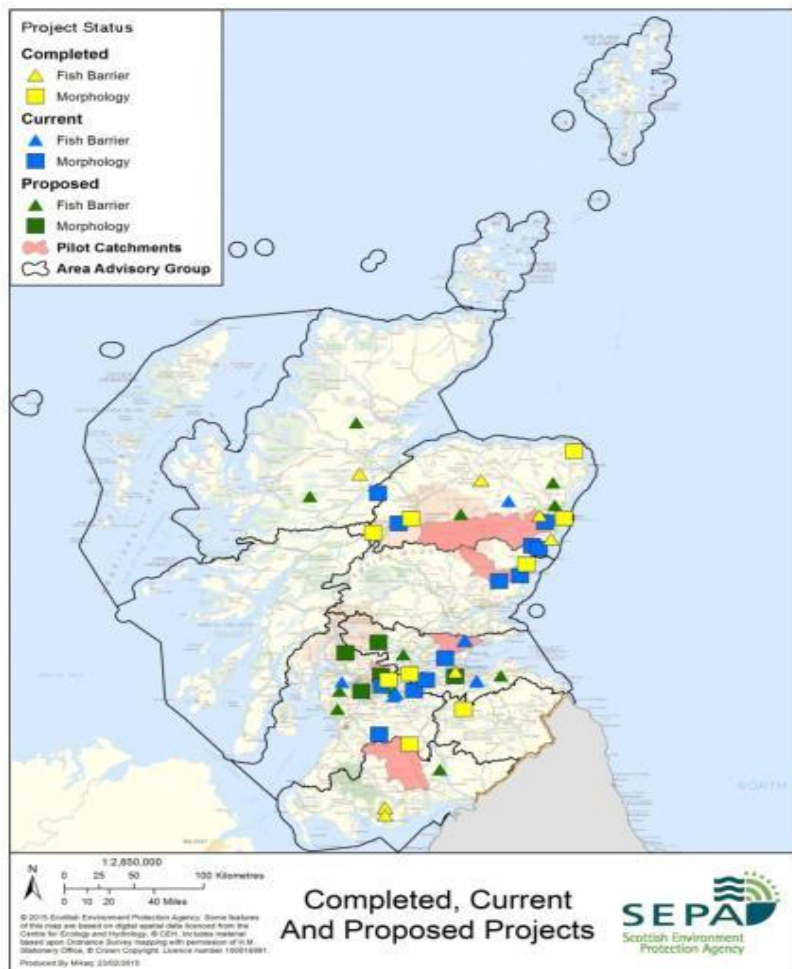
Underpinned by General Binding Rules

# Water Environment Fund Spend

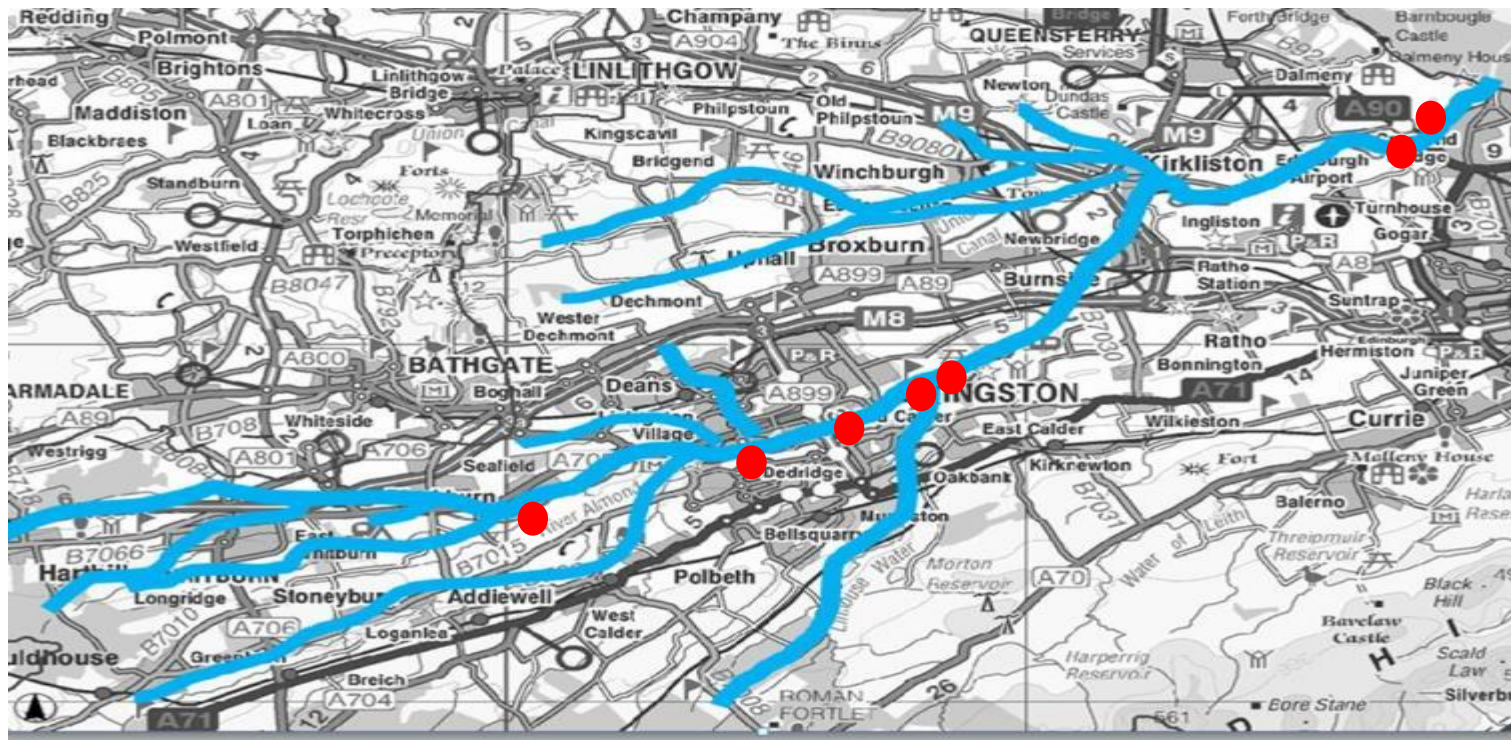
## Project spend







# Almond Barriers (W. Lothian)

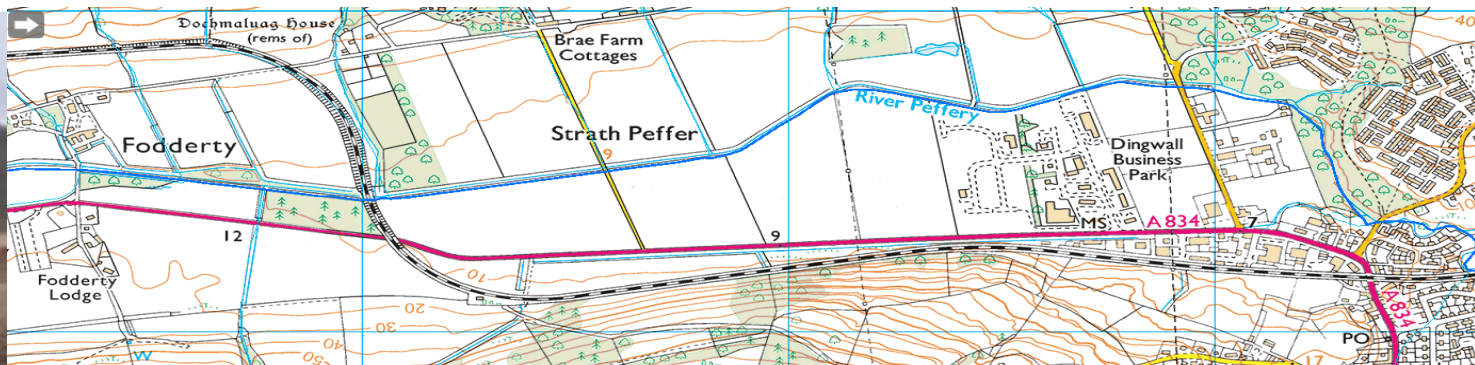


# Almond Barriers (W. Lothian)





# Case studies

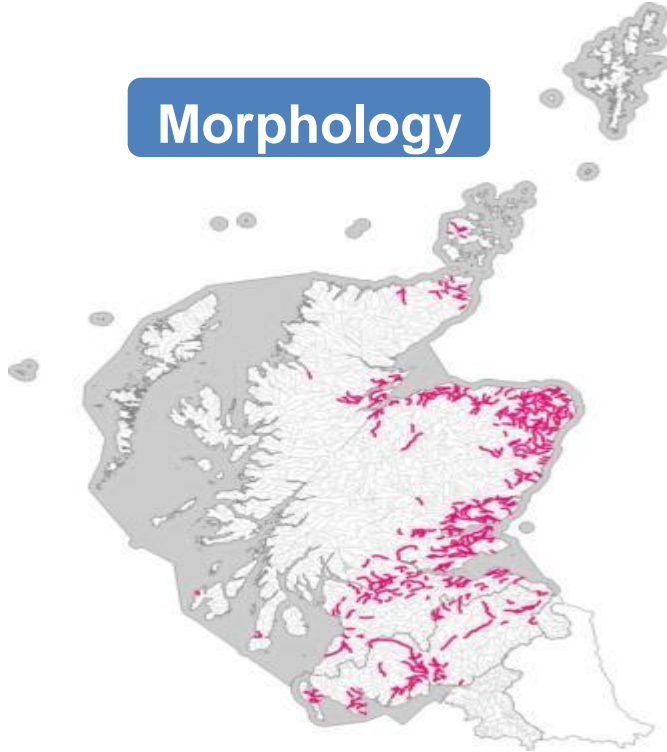


# Challenges & Opportunities

- Resources
- Cost benefit
- Ecological response – better tools
- True integrated catchment management
- Partnerships and multiple benefits
- May require compromises?

# Land use impacts

**Morphology**



**Diffuse Pollution**

