

Agriculture & Water, a personal perspective

Harold Kingston, farmer

EPA Water Event 8-6-2016

Agriculture & water, a personal perspective

“Despite all our achievements we owe our existence to a six-inch layer of topsoil and the fact that it rains”

- Farm equipment association of Minnesota and South Dakota

Farm Location



Farm Location

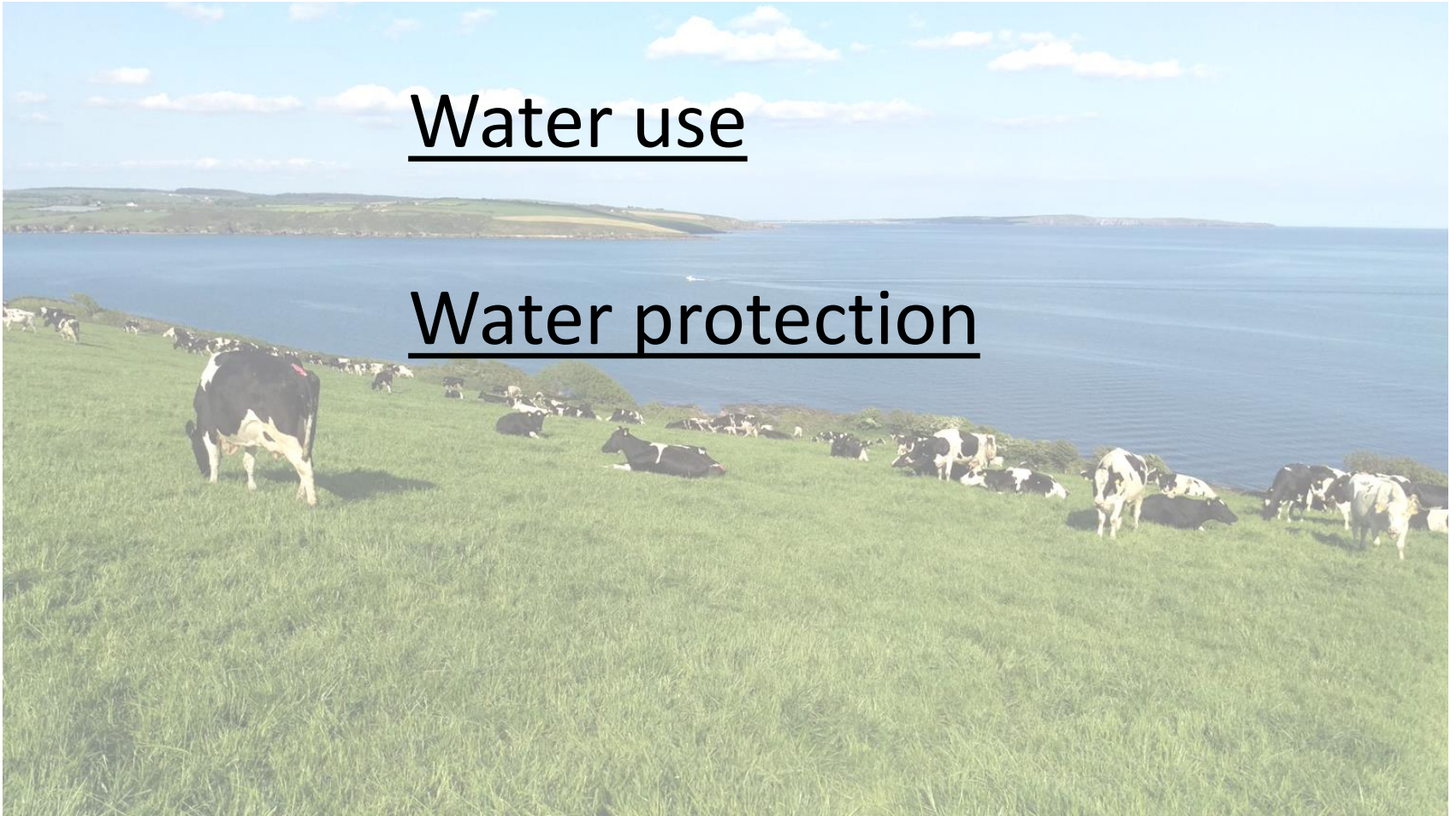


Courtmacsherry

Importance of water

Water use

Water protection




Water use

- Human population
 - Domestic
 - Industry
- Tourism/amenity
- Agriculture



Water use - agriculture

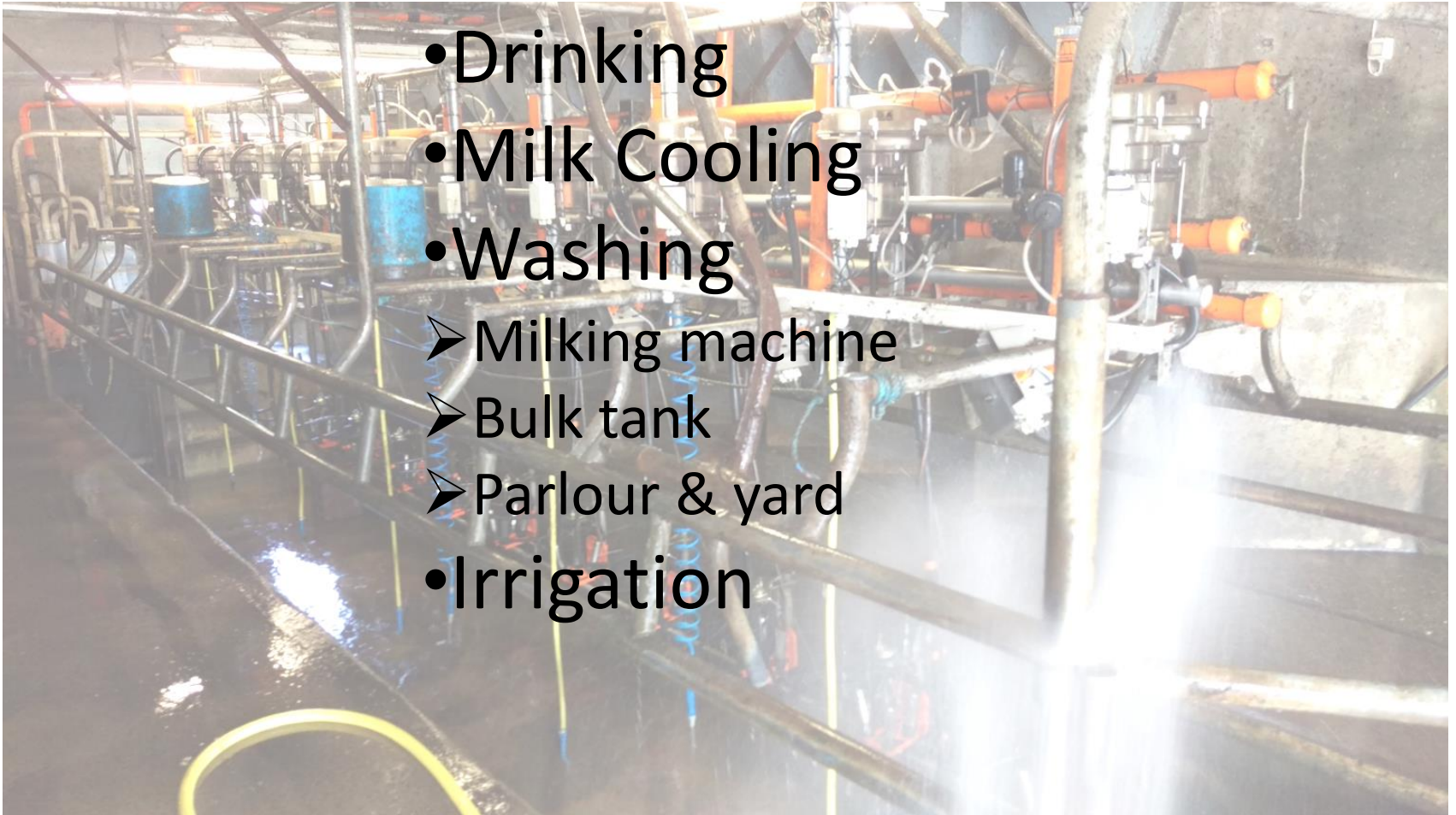
- 
- A photograph of a rural landscape featuring a grassy hillside where several cows are gathered around a long, rectangular concrete water trough. One cow is drinking from the trough, while others stand nearby. In the background, a body of water stretches to the horizon under a clear sky.
- Irrigation
 - Horticulture
 - Stock
 - 90litres/dairy cow
 - 45litres/beef animal
 - 40litres/100 poultry
 - 20litres/pig
 - 5litres/ewe

Water use - dairy



Water use - dairy

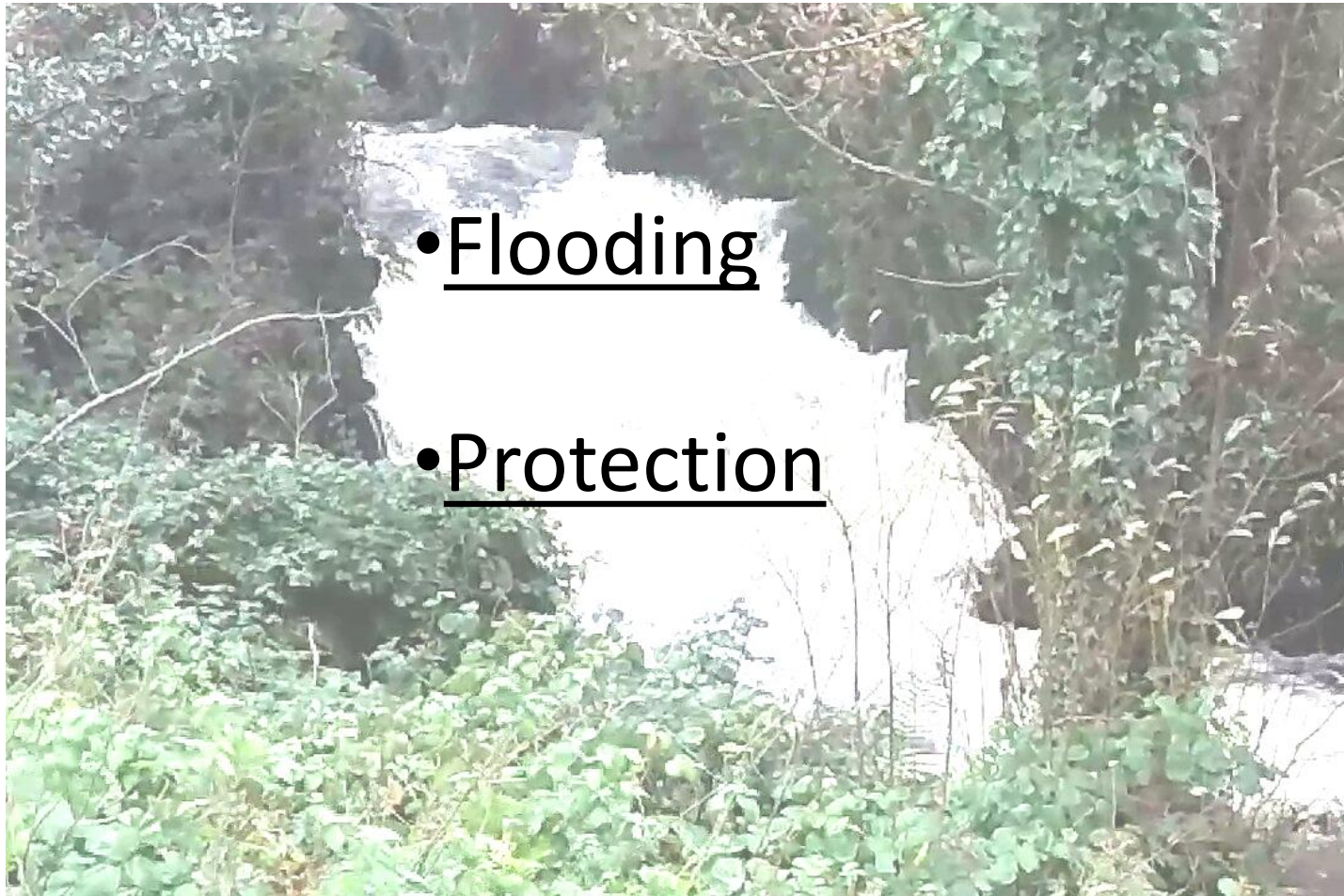
- Drinking
- Milk Cooling
- Washing
 - Milking machine
 - Bulk tank
 - Parlour & yard
- Irrigation



Water protection



Water protection



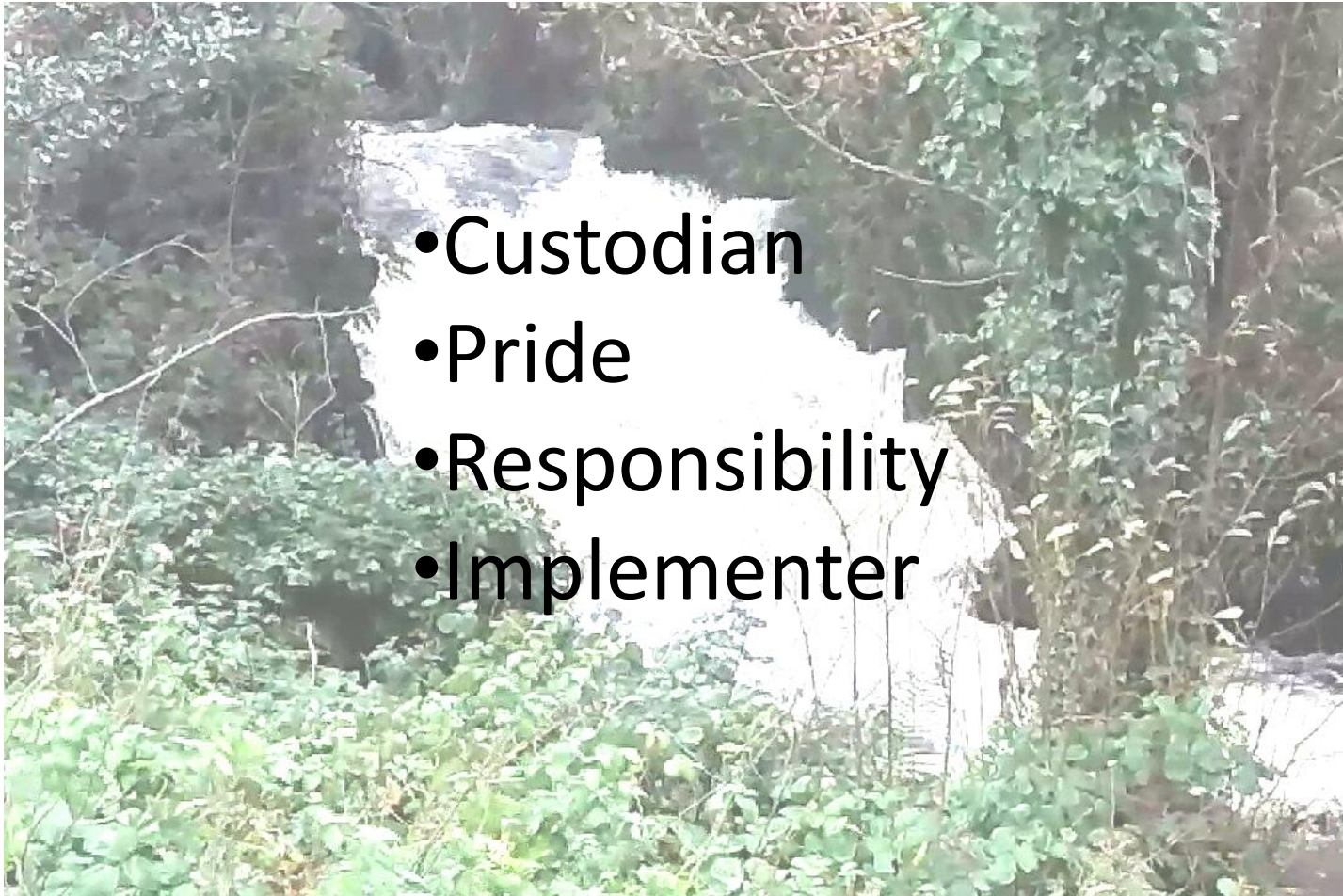
- Flooding

- Protection

Water protection - flooding



Water protection



- Custodian
- Pride
- Responsibility
- Implementer

Water protection - legislation



The image displays a collection of tools used in agricultural planning and management:

- Calculator:** A silver electronic calculator with a digital display showing '0'.
- Map:** An aerial photograph of a farm with fields outlined in blue and numbered 1 through 11. A red line and a blue star are also visible on the map.
- Pen:** A black ballpoint pen lying diagonally across the spreadsheets.
- Spreadsheets:**
 - Field Management Table:** A table with columns for Field Name, Crop, Area (ha), Soil Sample, Soil pH, Index (N, P, K), Time (t/acre), and other metrics. It lists fields 12 through 25 with various crop treatments like 'Grazing', 'Cut + Grazing', and 'No Soil Test'.
 - Nutrients Test Results Table:** A table with columns for Set/Code, Ident, Field/NMP, and numerical values. It lists results for fields 1 through 4, all identified as 'Good Permanent Grass (GG)'.
 - Partial Table:** A partially visible table at the bottom left with columns for Set/Code, Ident, and Field/NMP, listing codes like OCF/2328-(1) and OCF/2329-(1).

Water protection - legislation



Problems

- Focus
- Inflexible
- Cost
- Time

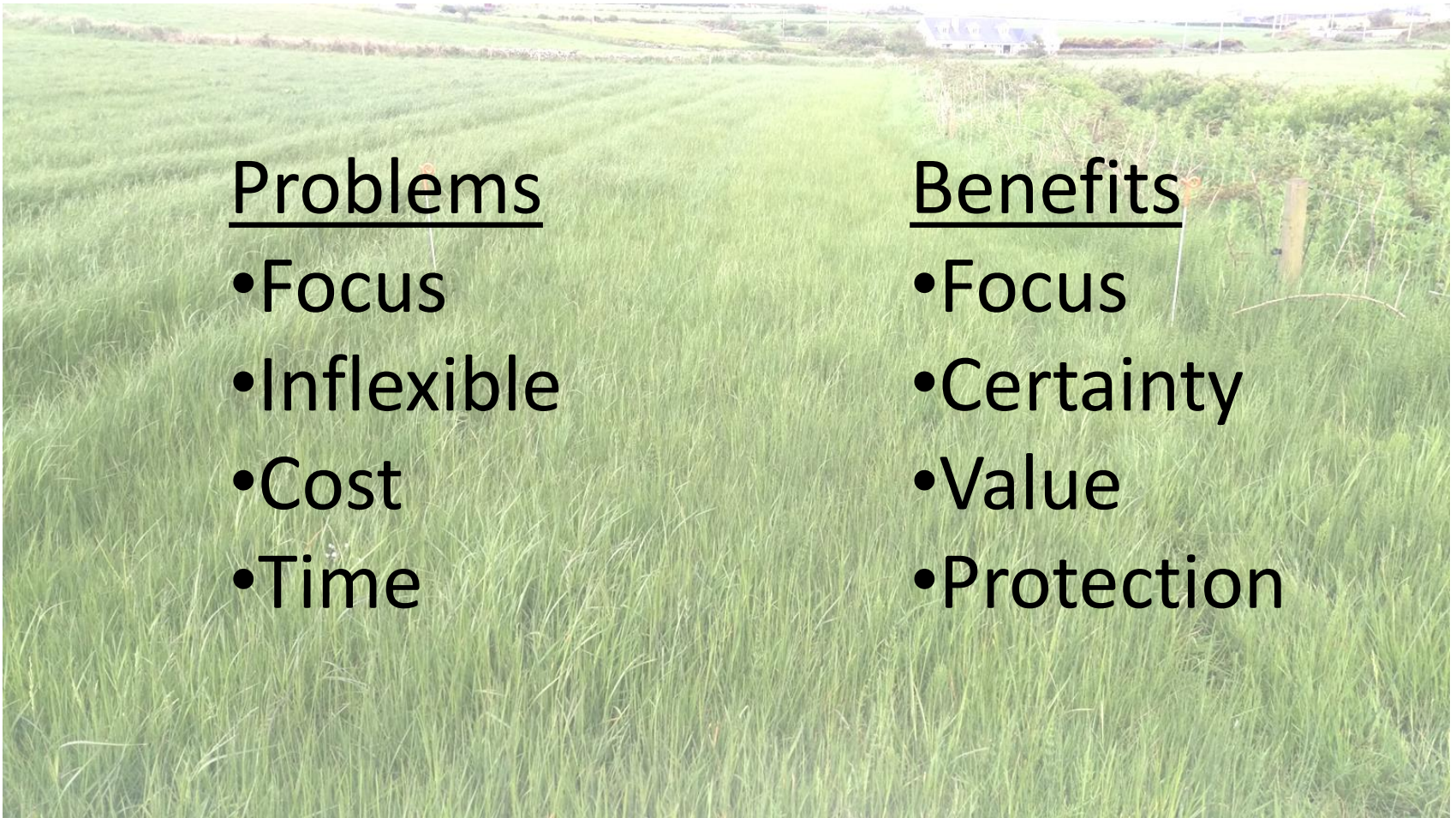
Water protection - legislation

Problems

- Focus
- Inflexible
- Cost
- Time

Benefits

- Focus
- Certainty
- Value
- Protection



Water protection - legislation

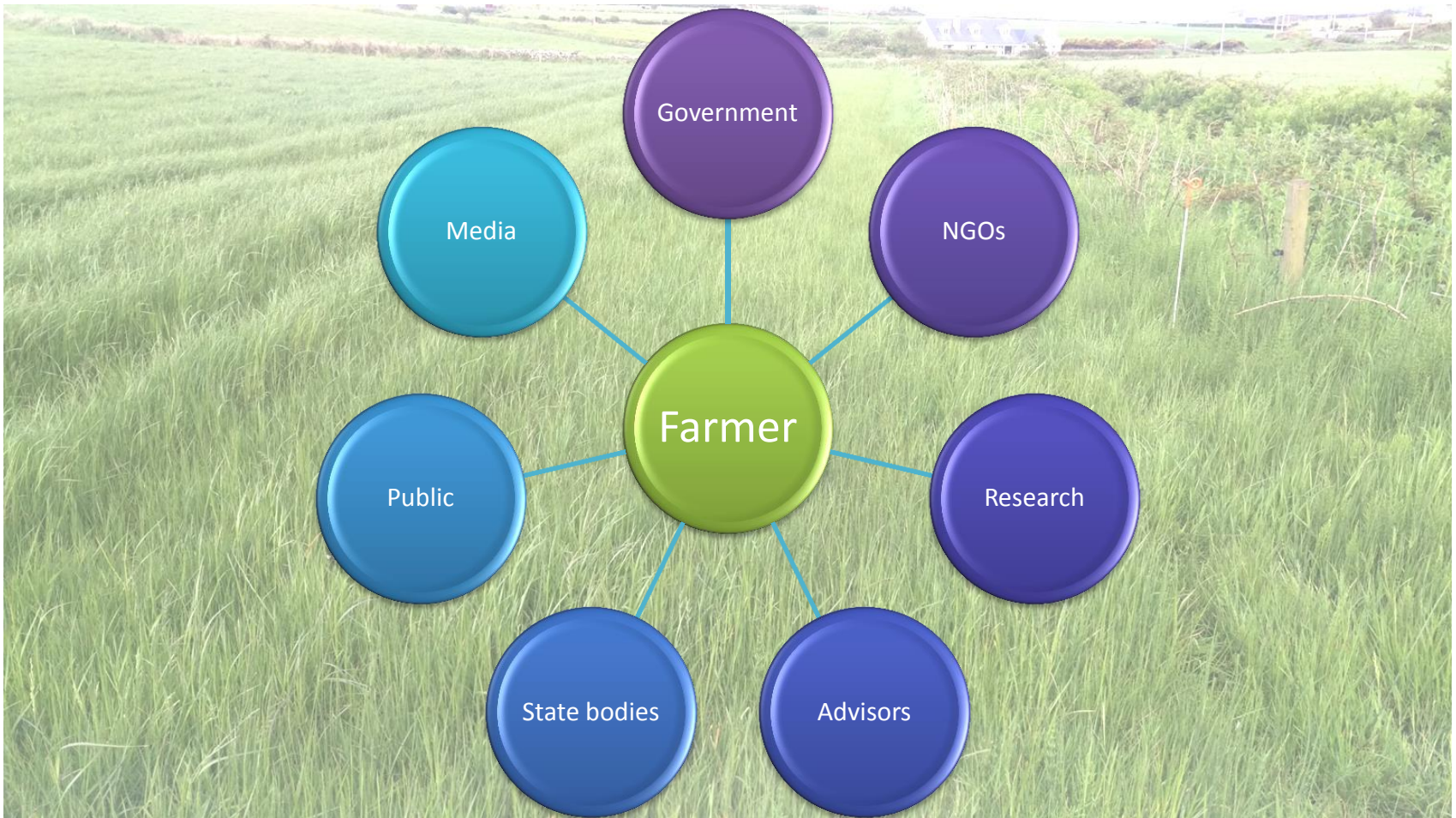
Problems

- Focus
- Inflexible
- Cost
- Time
- Experts

Benefits

- Focus
- Certainty
- Value
- Protection
- Experts

Experts



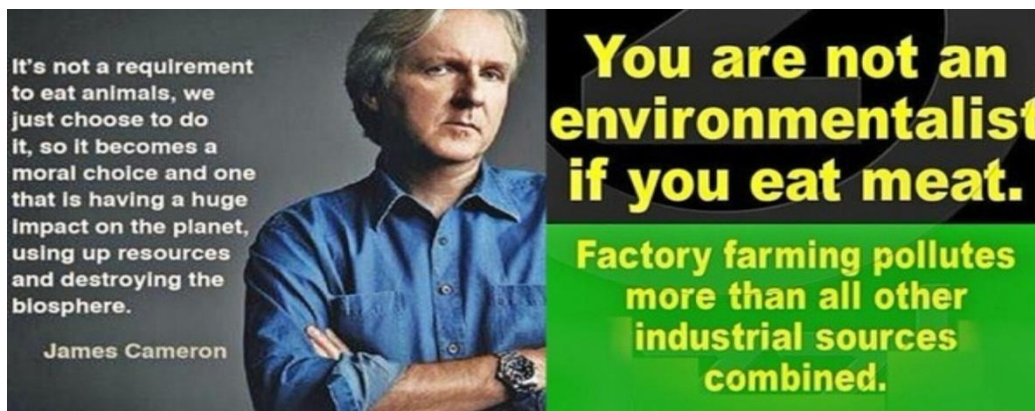
Working together from source to sea - science to action



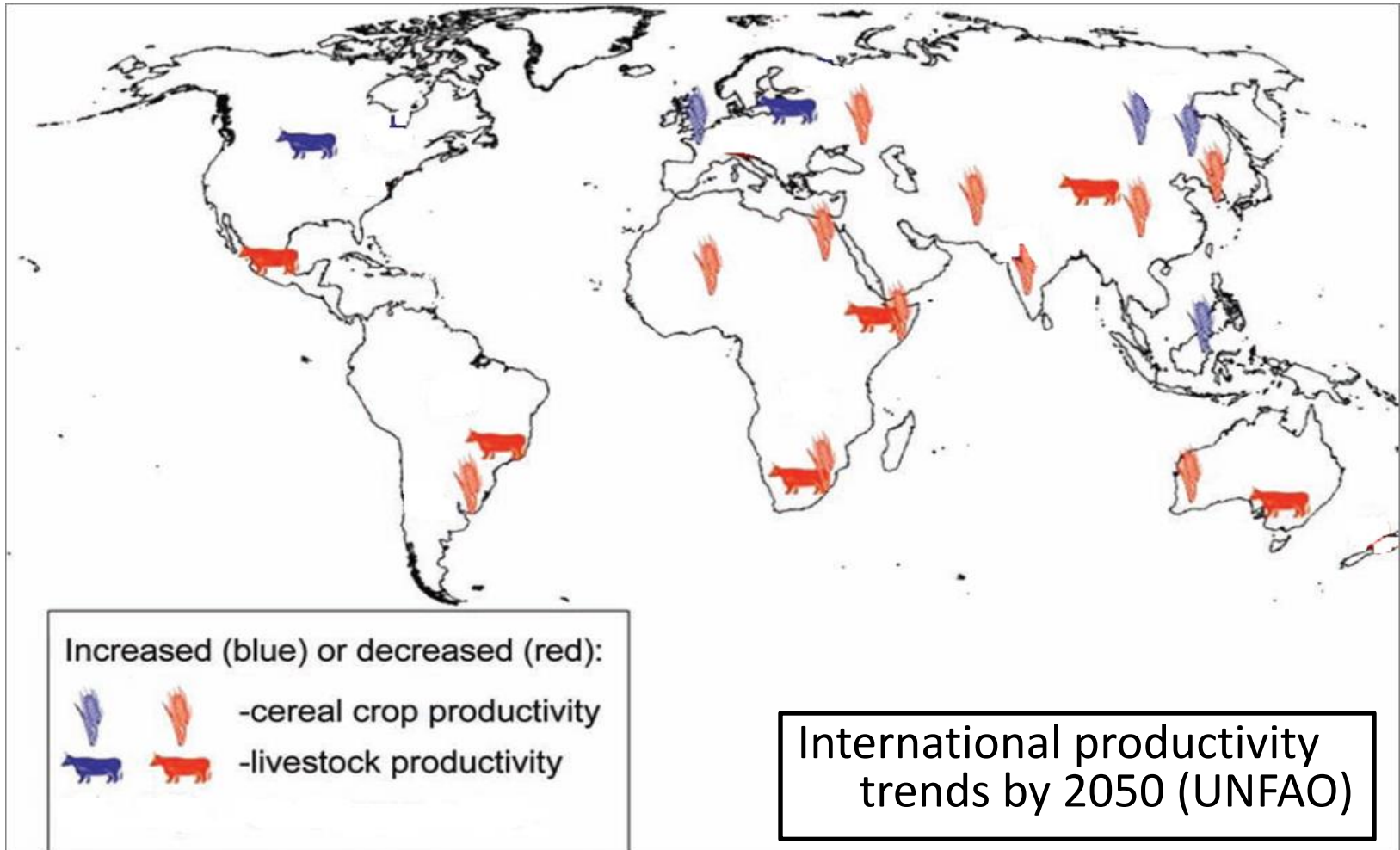
TO: THE MINISTER FOR ARTS, HERITAGE AND
THE GAELTACHT, HEATHER HUMPHREYS TD

**NO TO MORE SLASH AND
BURN!**

SIGN



Water stress



Agriculture & water

– a personal perspective

Conclusions

- Water needs to be protected
- Water needs to be used responsibly
- More experts than implementers
- Agriculture – a solution
- Food production



Voluntary on-farm resource efficiency initiative



Thank you



 @HaroldKingston1

www.farmersjournal.ie/journalists/hkingston/haroldkingston