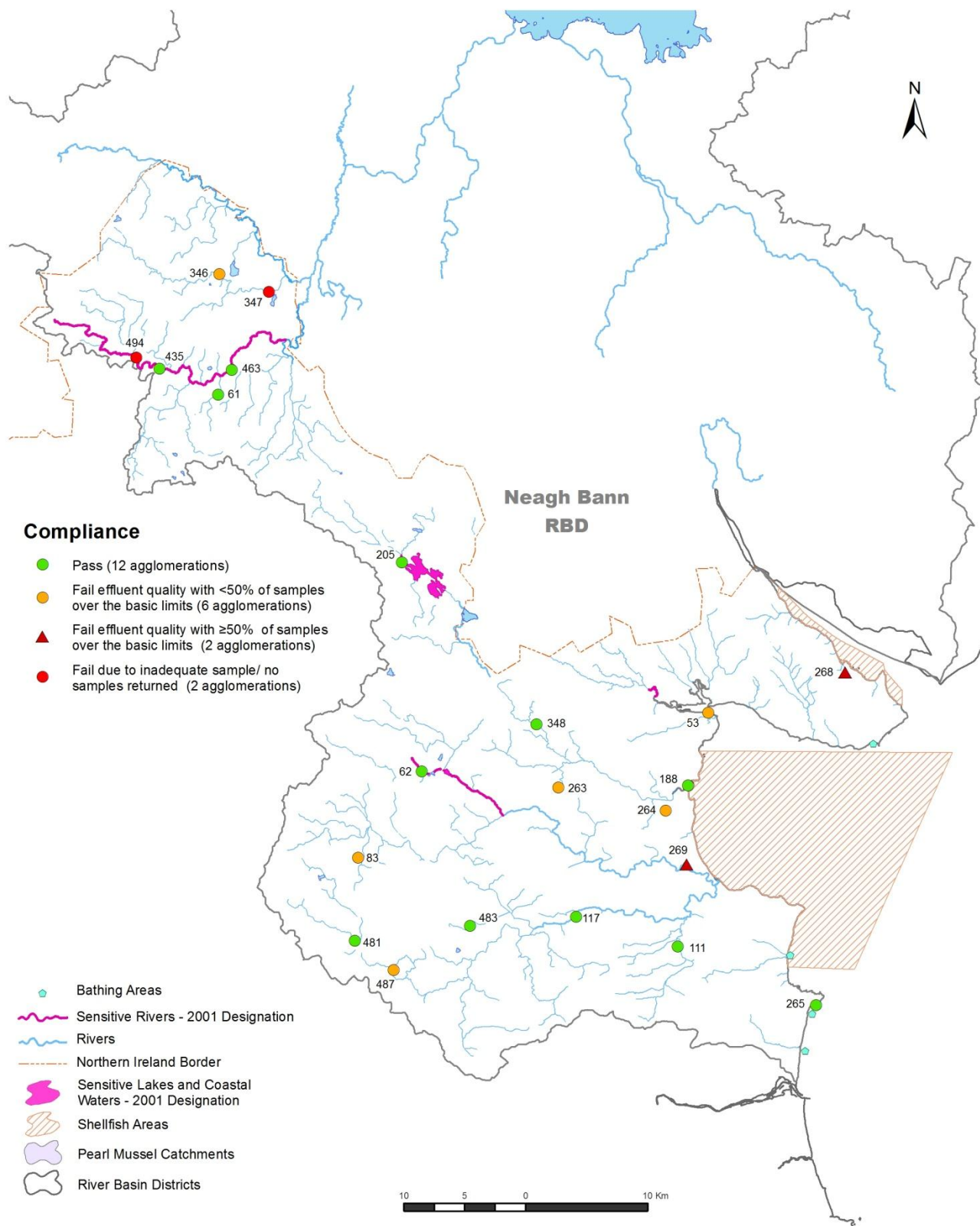


Figure A-2: Assessment of waste water discharges from licensable agglomerations in the Neagh Bann River Basin District in 2009 measured against the standards set in the Urban Waste Water Treatment Directive for BOD, COD and suspended solids.<sup>1</sup>



<sup>1</sup> Performance was assessed against the limits for BOD (25 mg/l O<sub>2</sub>), COD (125 mg/l O<sub>2</sub>) and suspended solids (35 mg/l) set in Table 1 of the Directive, and the sampling requirements in Annex 1.D.3 of the Directive. Compliance with the limits is not a statutory requirement for discharges from agglomerations < 2,000 p.e. discharging to freshwater or estuaries and agglomerations < 10,000 p.e. discharging to coastal waters (unless specified in the WWDL). The minimum number of samples to be collected at agglomerations < 2,000 is not specified in the Directive and was set at 6 for this assessment.

The numbers on this map correspond to the WWDL Registration Number of each agglomeration e.g. 34 is D0034-01. For a complete list of numbers and their corresponding agglomeration names see Table A-1.

Go to [www.epa.ie/downloads](http://www.epa.ie/downloads) to view this map.

© Ordnance Survey Ireland. All rights reserved. Licence Number EN 0059208