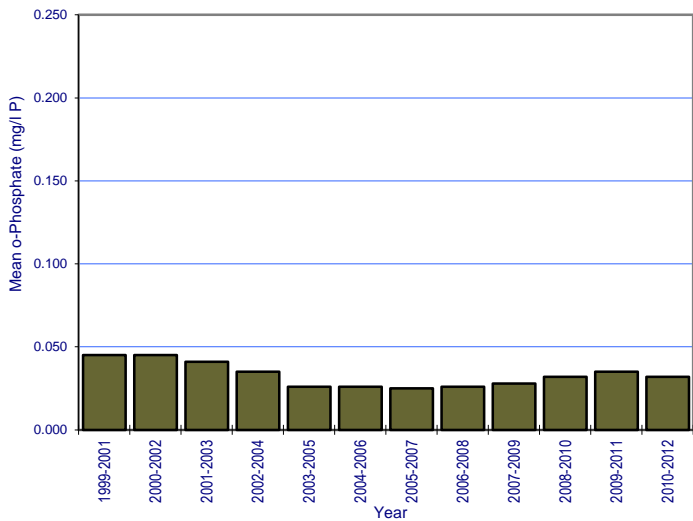
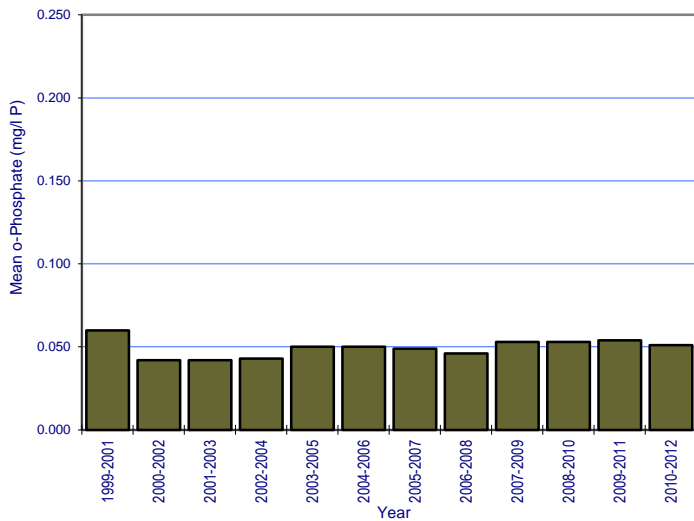


APPENDIX 5: O-PHOSPHATE TREND GRAPHS

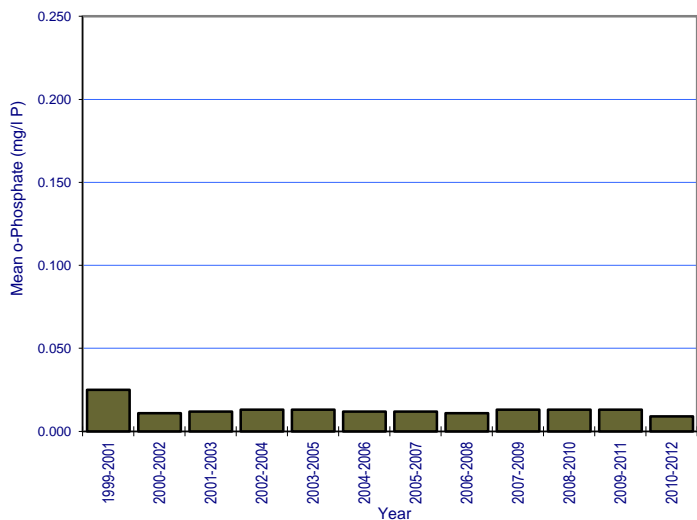
River: Avaghon Lake Stream Station No.: 0600



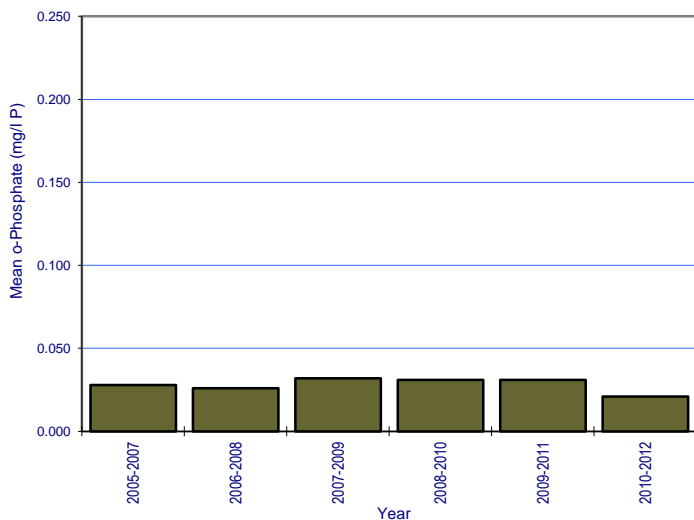
River: Ballymascanlon Station No.: 0100



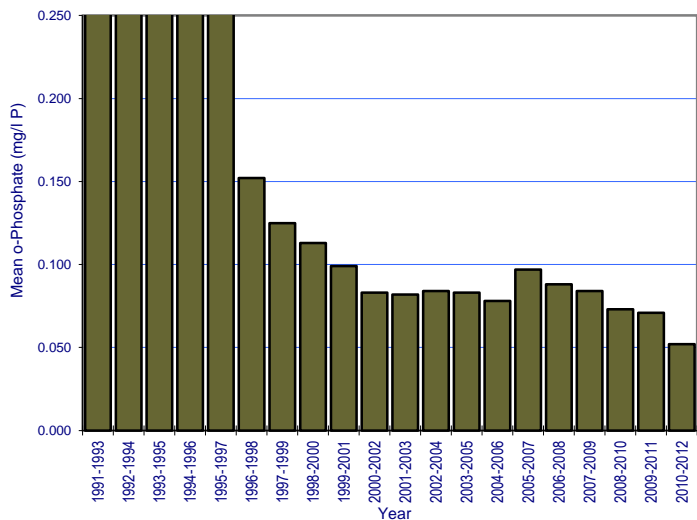
River: Big (Louth) Station No.: 0100



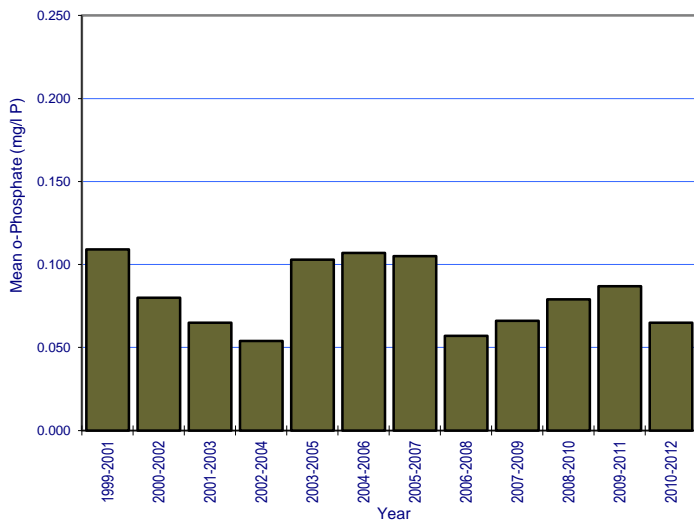
River: Blackwater (Monaghan) Station No.: 0130



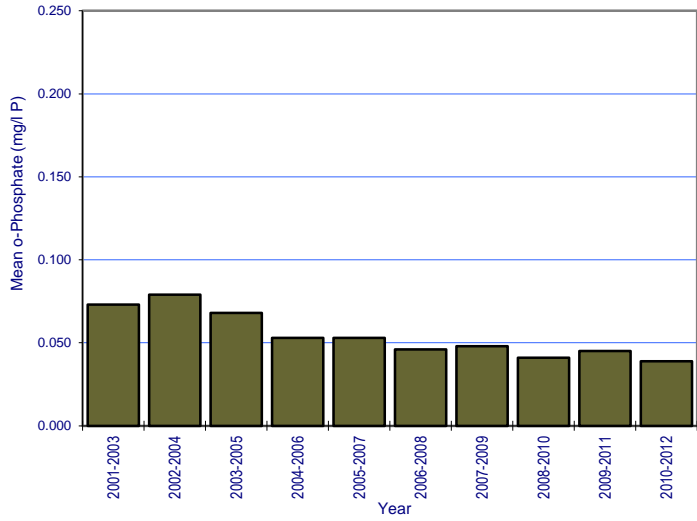
River: Blackwater (Blackwater) Station No.: 0800



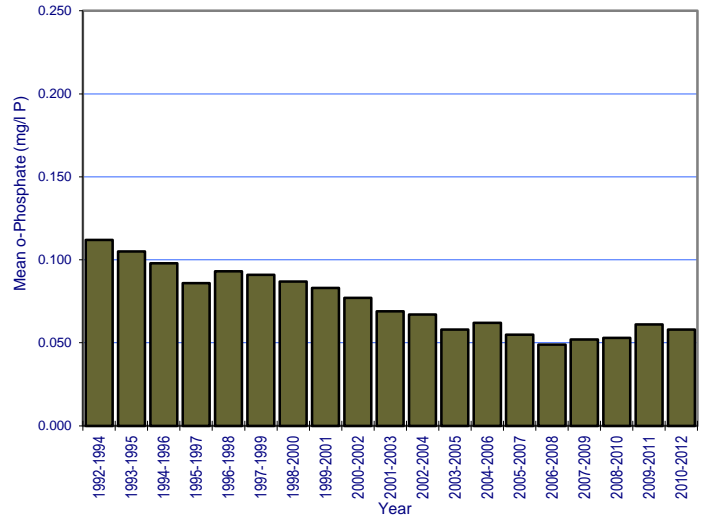
River: Castletown Station No.: 0200



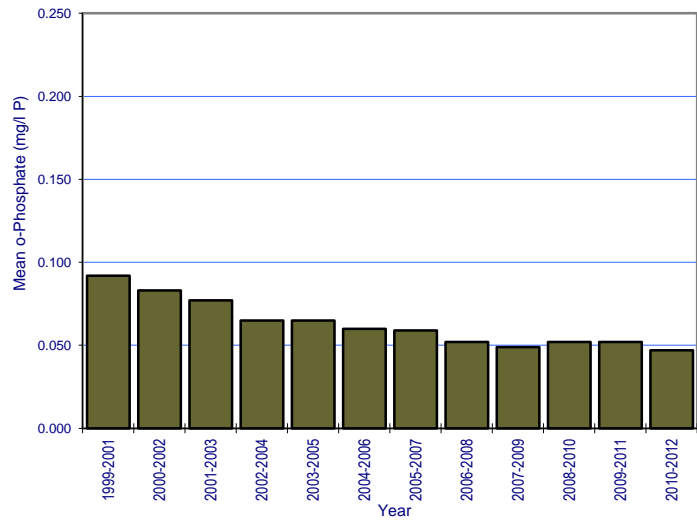
River: Clontibret Stream Station No.: 1400



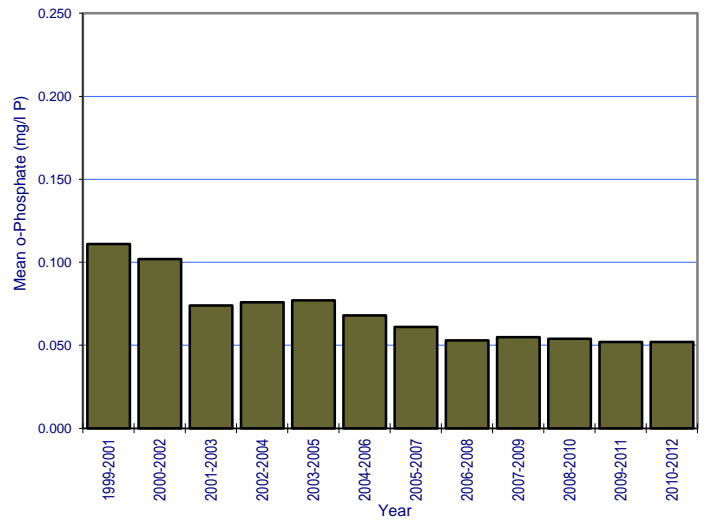
River: Conawary (Lower) Station No.: 1300



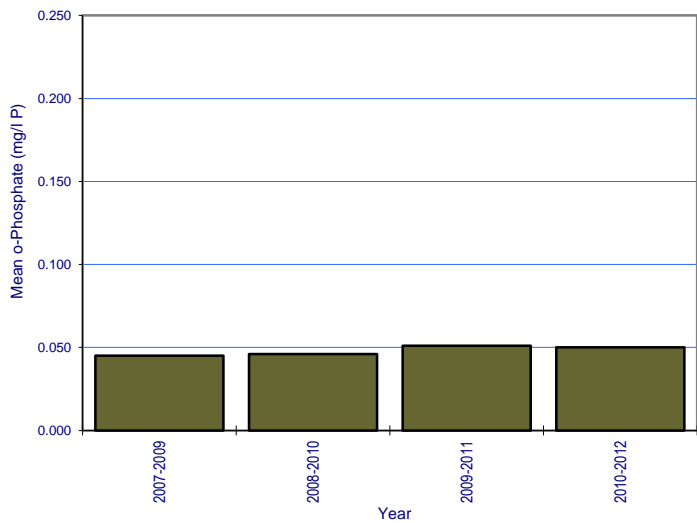
River: Conawary (Upper) Station No.: 0700



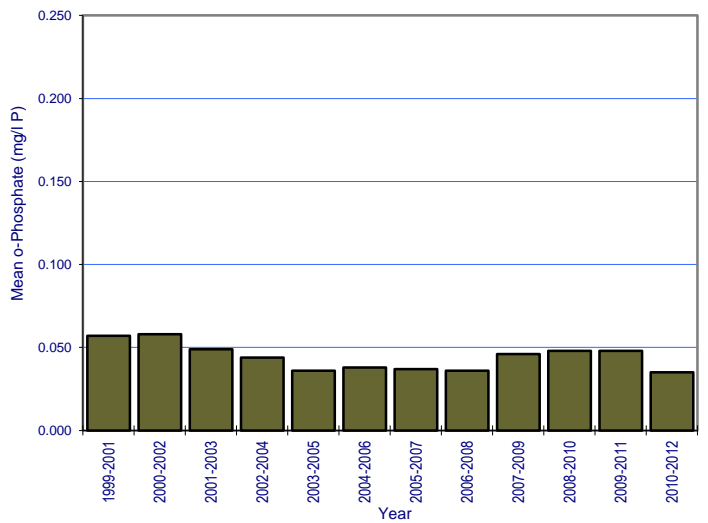
River: County Water Station No.: 0050



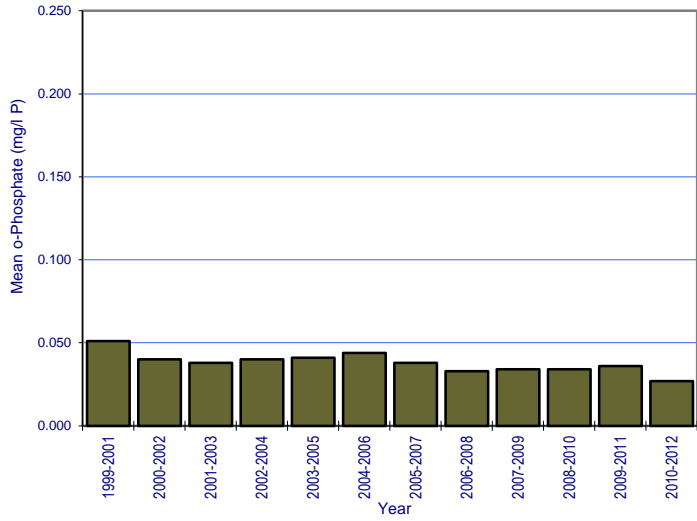
River: County Water Station No.: 0170



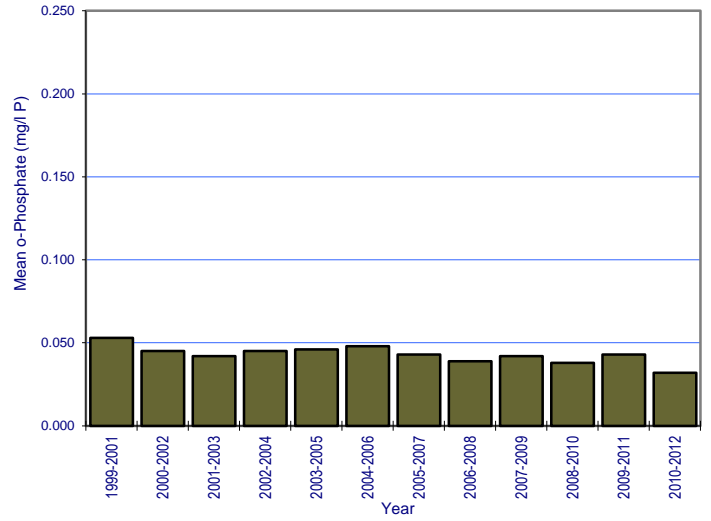
River: Cully Water Station No.: 0200



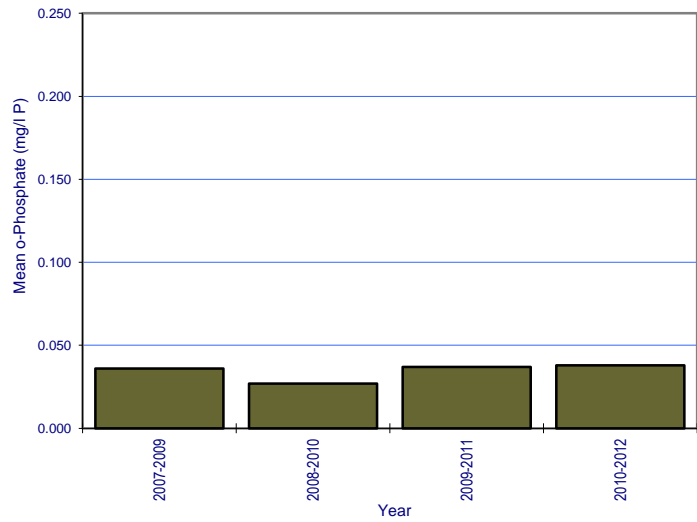
River: Dee Station No.: 0600



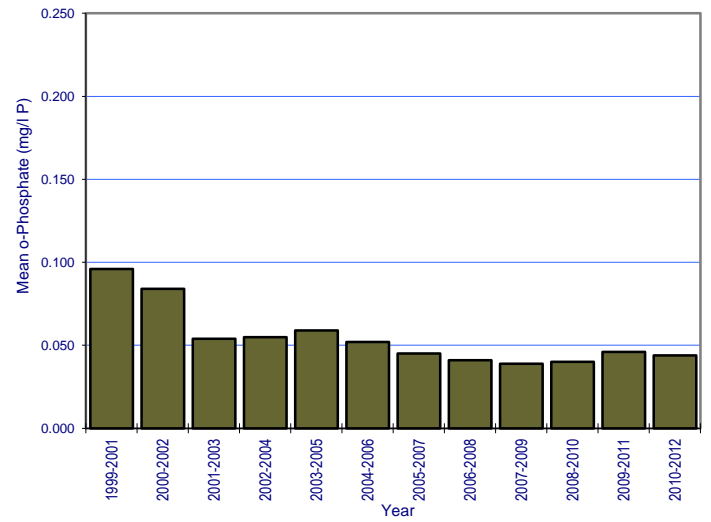
River: Dee Station No.: 0670



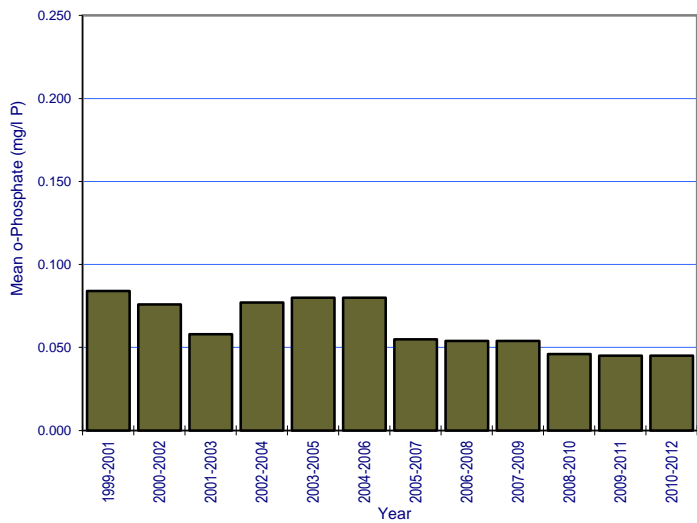
River: Dee Station No.: 0680



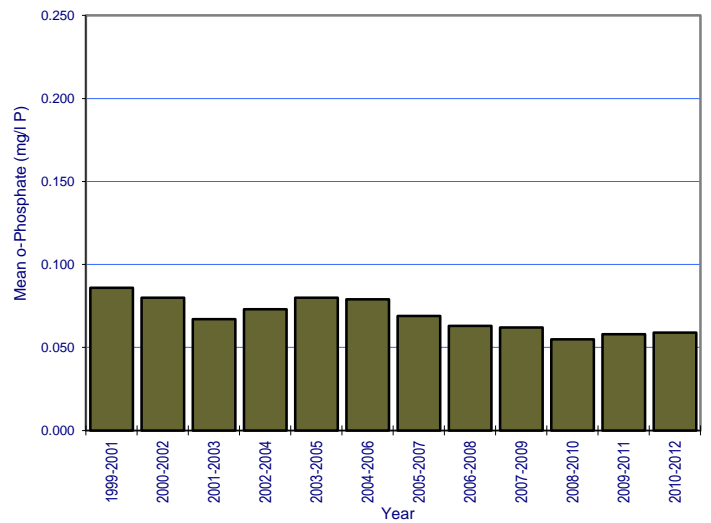
River: Dee Station No.: 0710



River: Dee Station No.: 1000

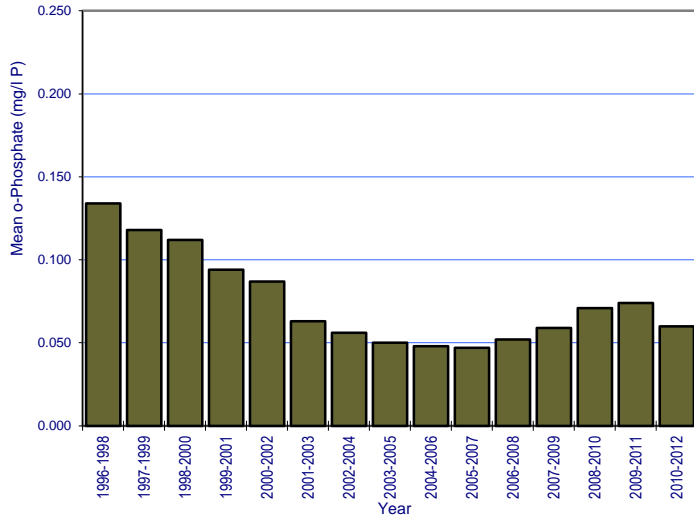


River: Dee Station No.: 1100



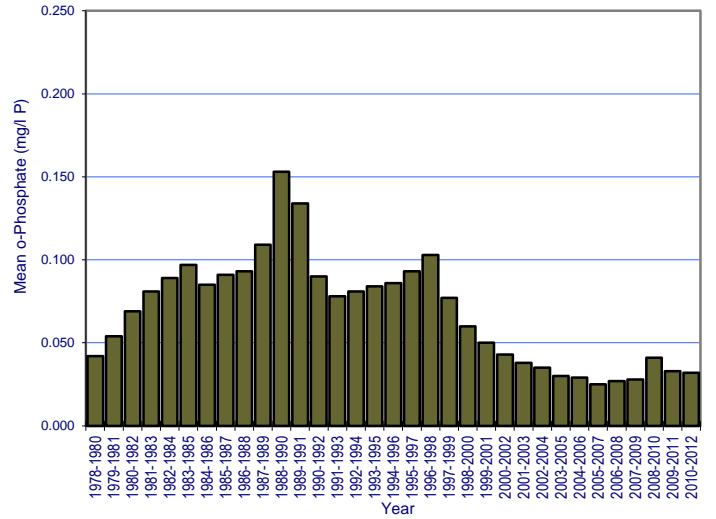
River: Dromore

Station No.: 0150



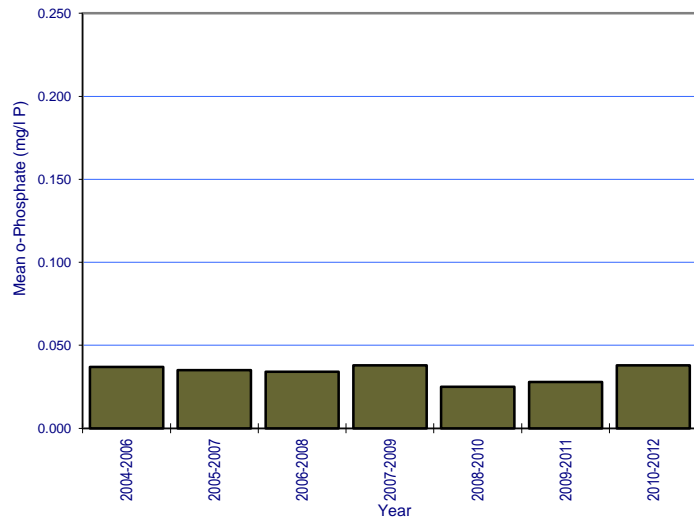
River: Dromore

Station No.: 0300



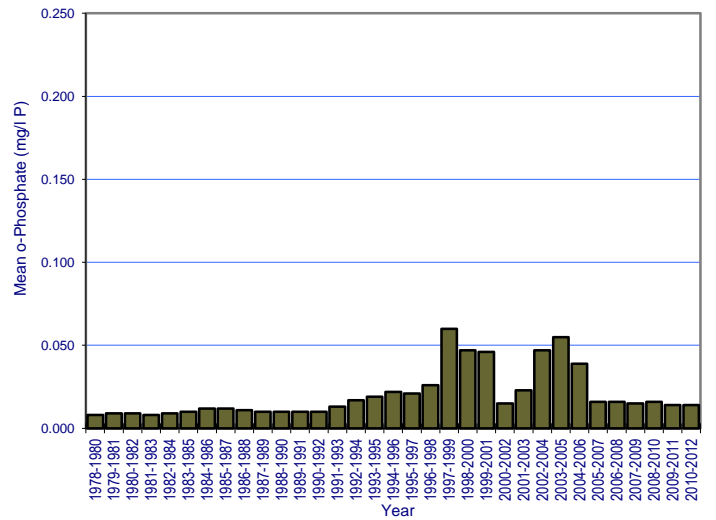
River: Drumsallagh

Station No.: 0070



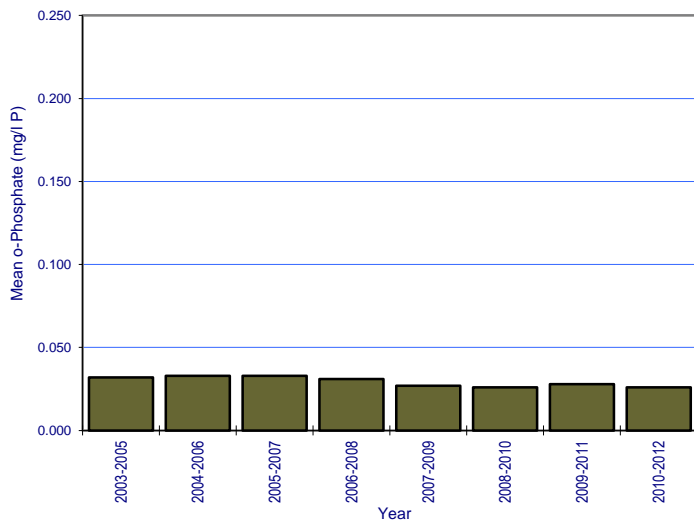
River: Fane

Station No.: 0200



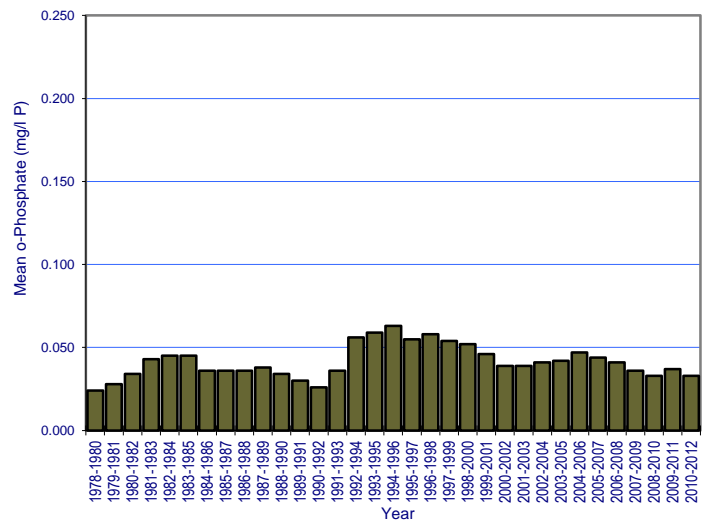
River: Fane

Station No.: 0650

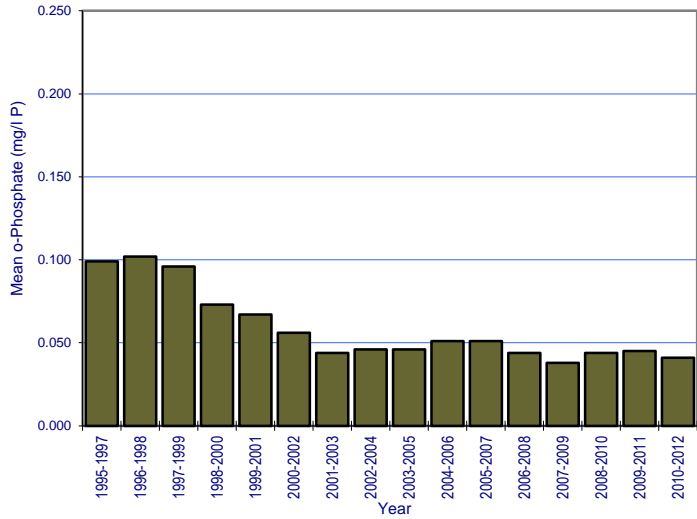


River: Fane

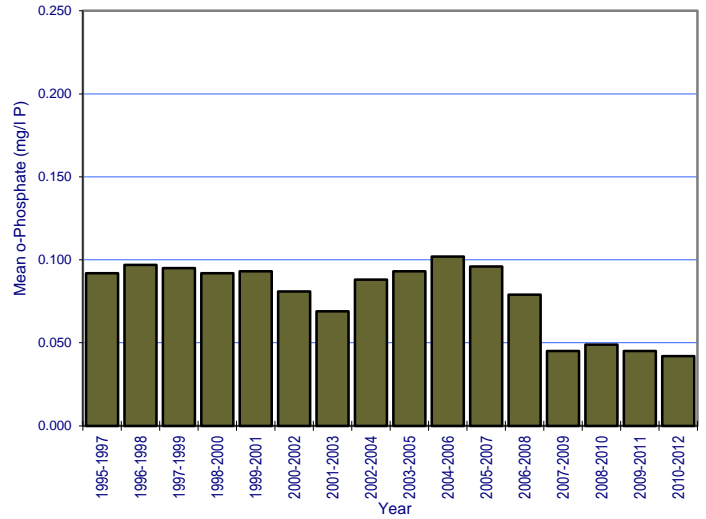
Station No.: 0900



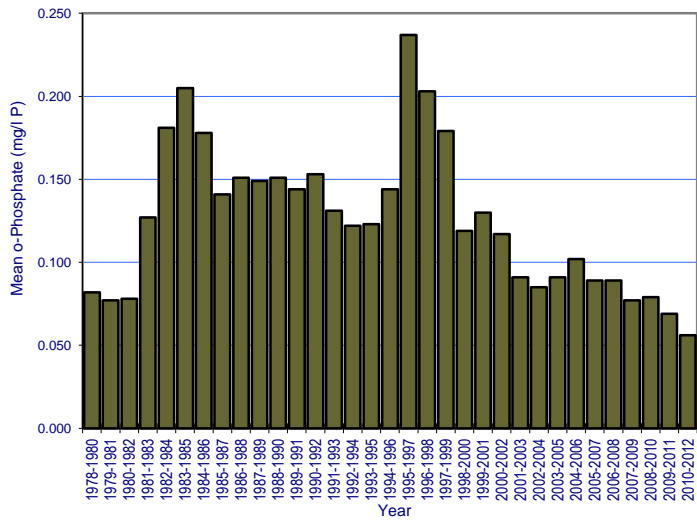
River: Finn (Monaghan) Station No.: 0100



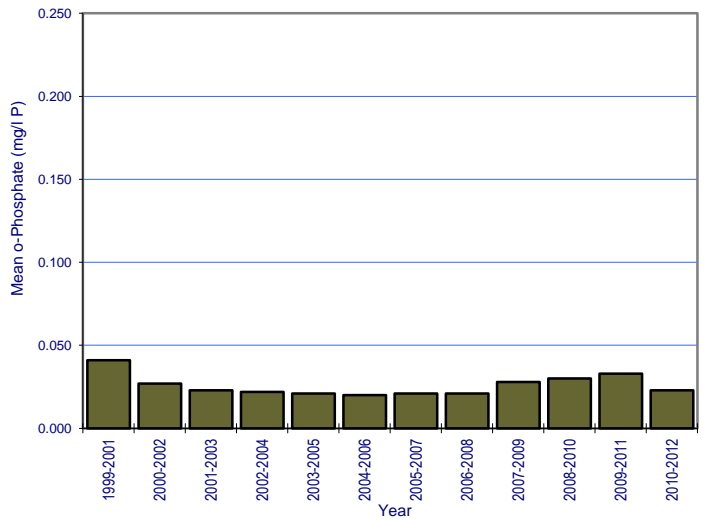
River: Finn (Monaghan) Station No.: 0200



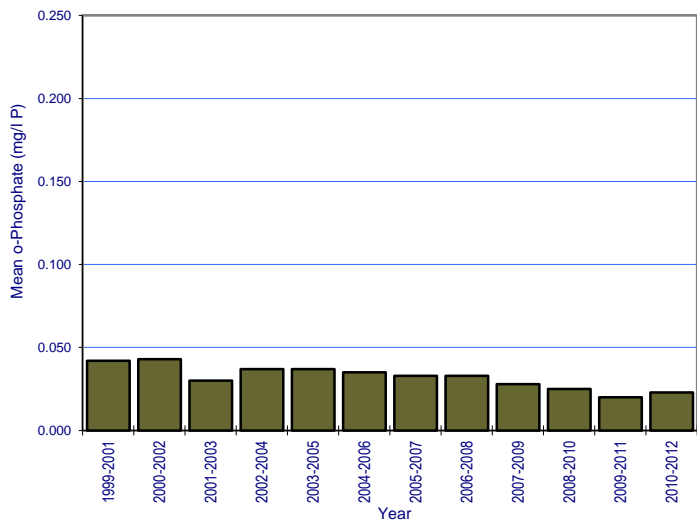
River: Finn (Monaghan) Station No.: 0500



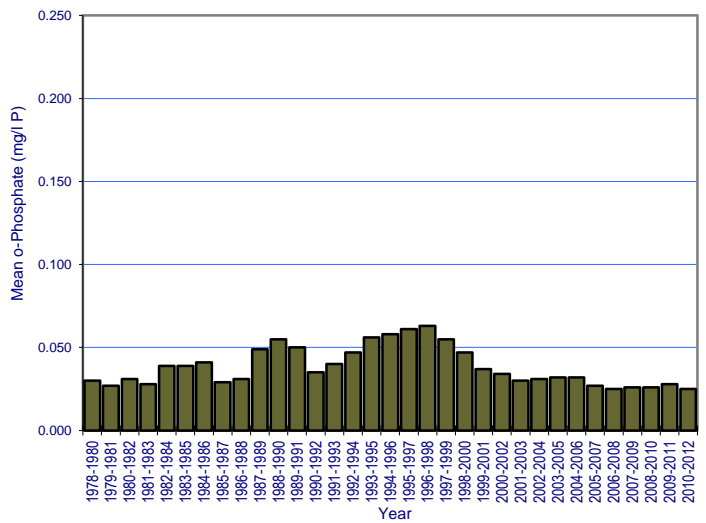
River: Flurry Station No.: 0700



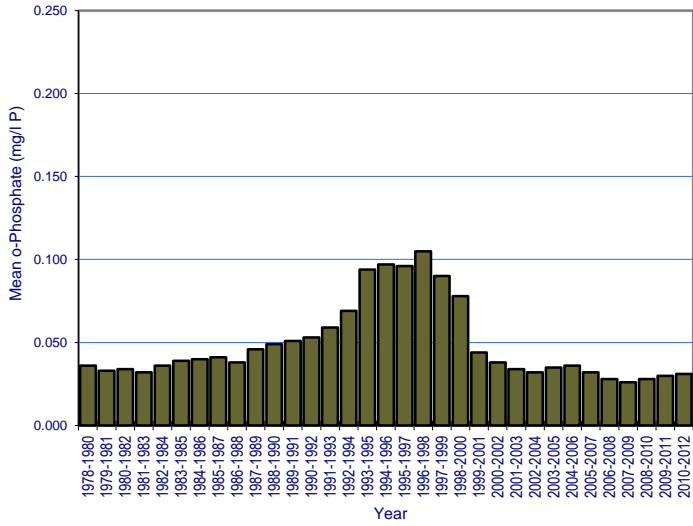
River: Gentle Owen's Lake Stream Station No.: 0100



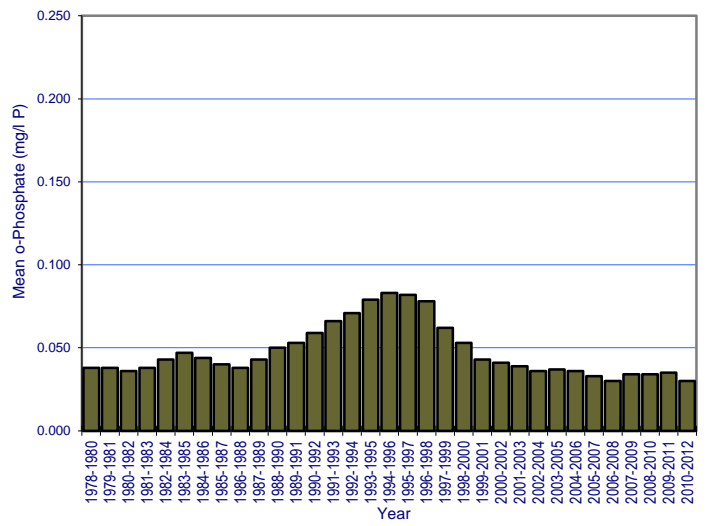
River: Glyde Station No.: 0500



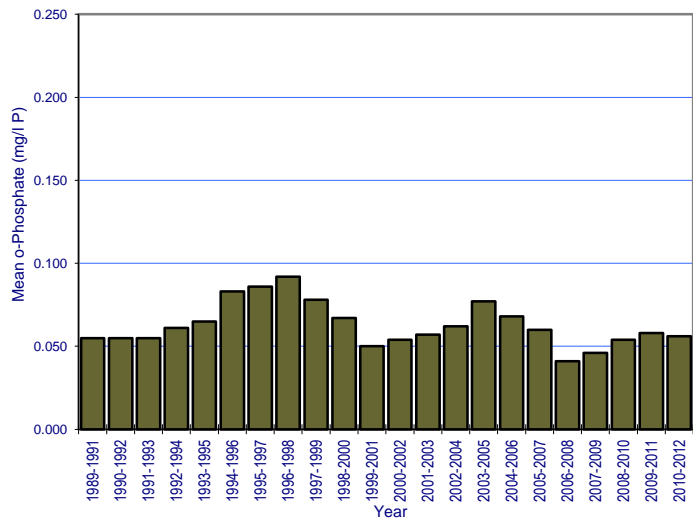
River: Glyde Station No.: 0700



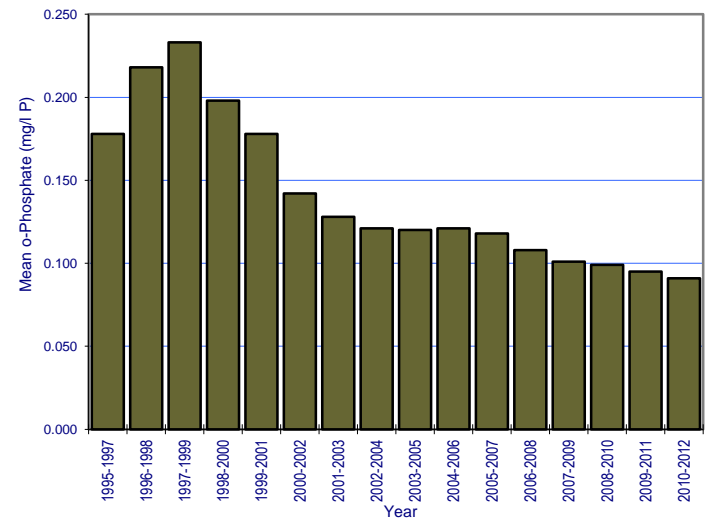
River: Glyde Station No.: 0900



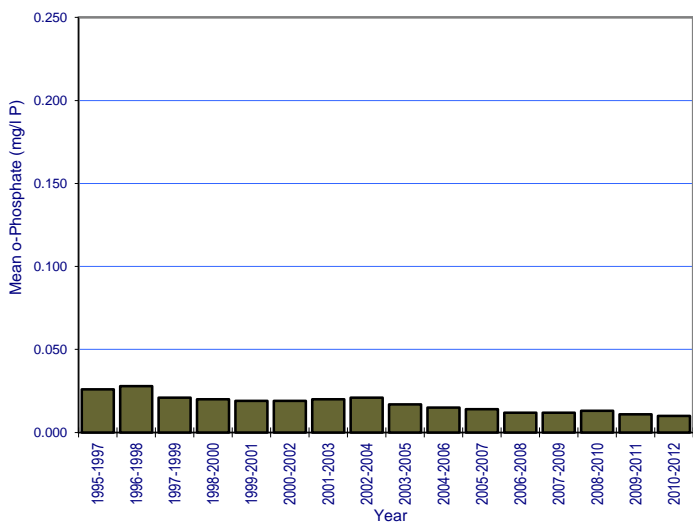
River: Glyde Station No.: 1230



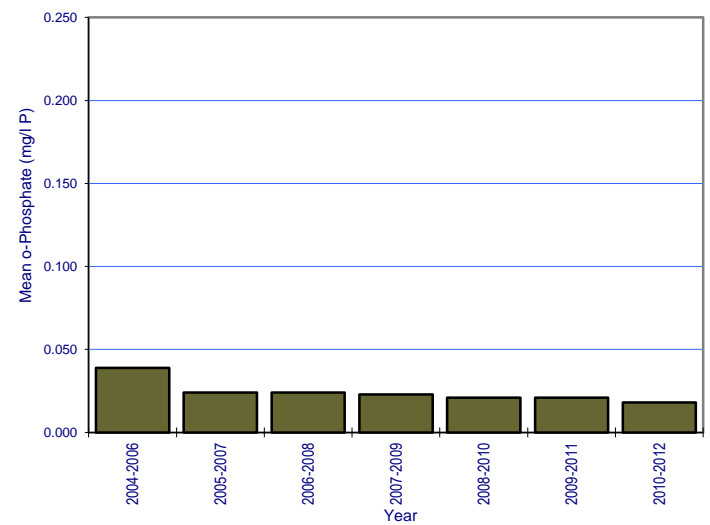
River: Knappagh Station No.: 0100



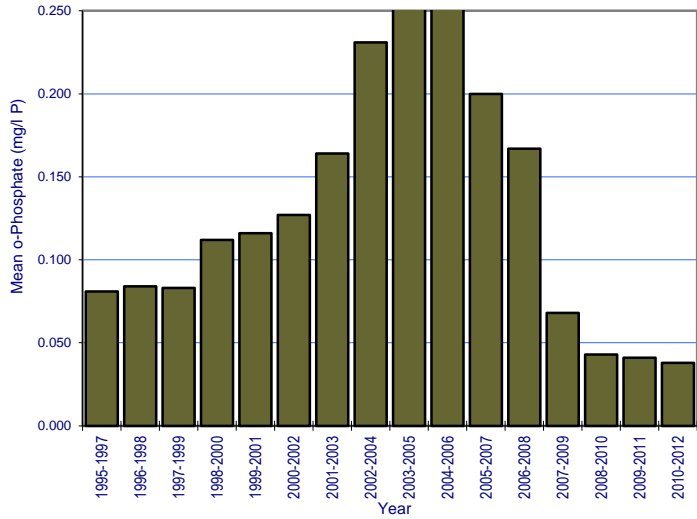
River: Knappagh Station No.: 0400



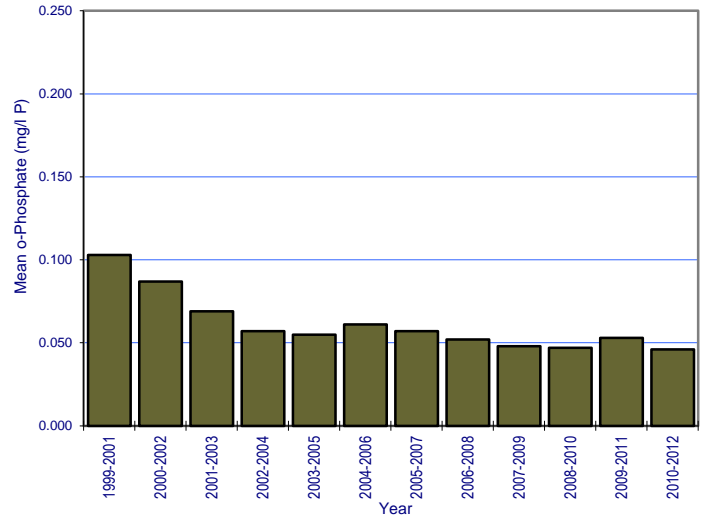
River: Magheraclone Stream Station No.: 0096



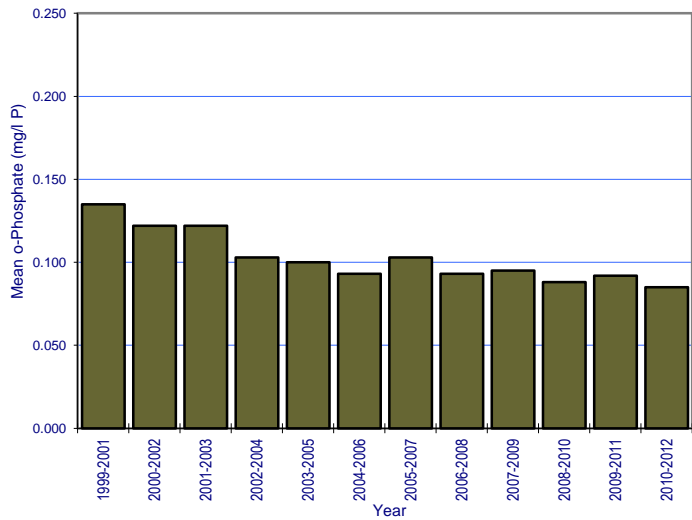
River: Magherarney Station No.: 0200



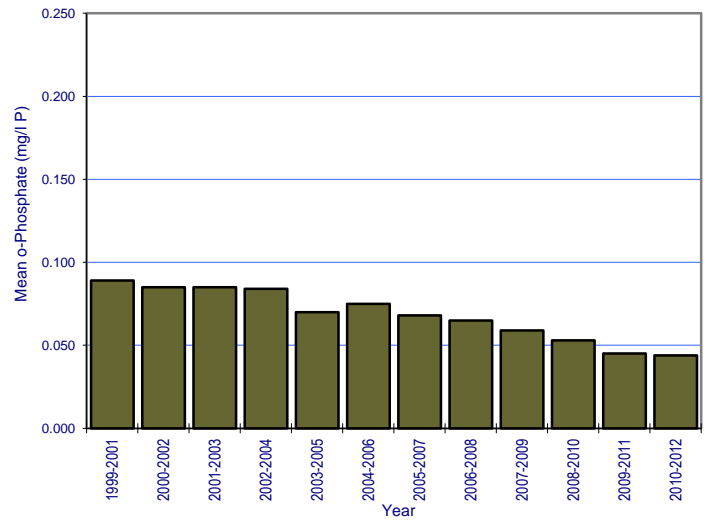
River: Maghery Station No.: 1200



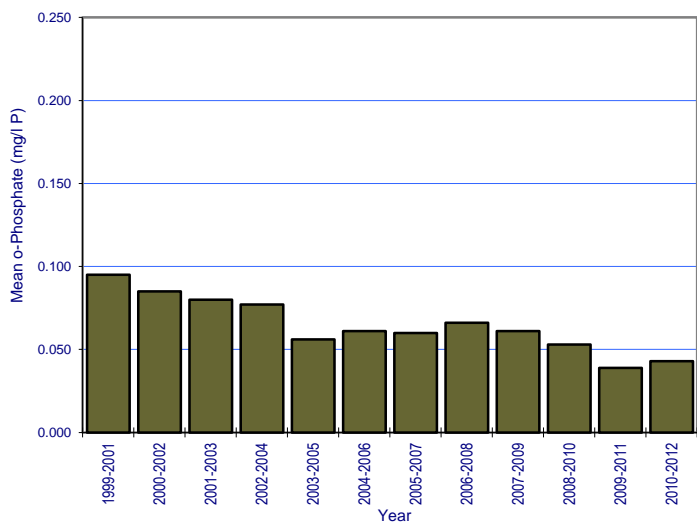
River: Mattock Station No.: 0100



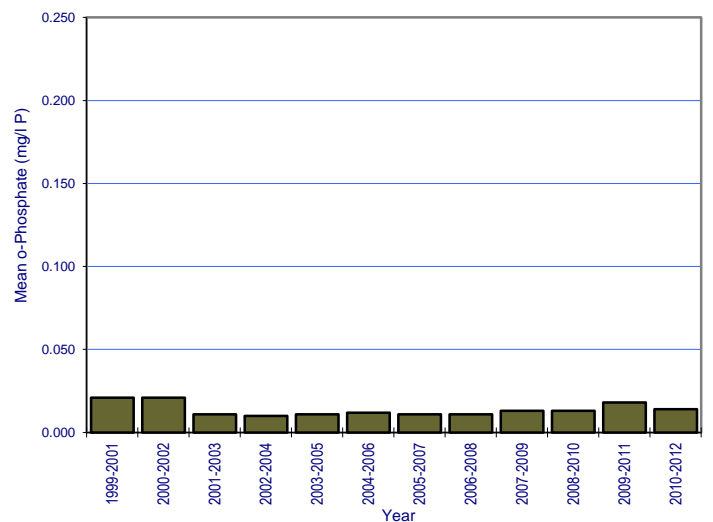
River: Mattock Station No.: 0200



River: Mattock Station No.: 0300

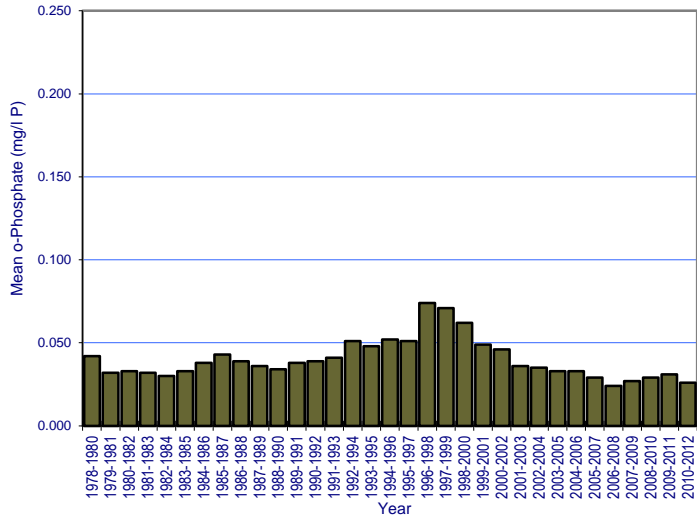


River: Mountain Water Station No.: 0100



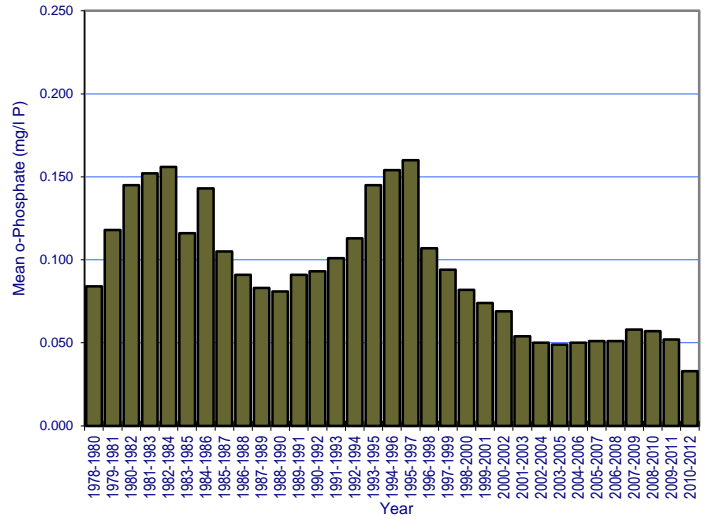
River: Mountain Water

Station No.: 0400



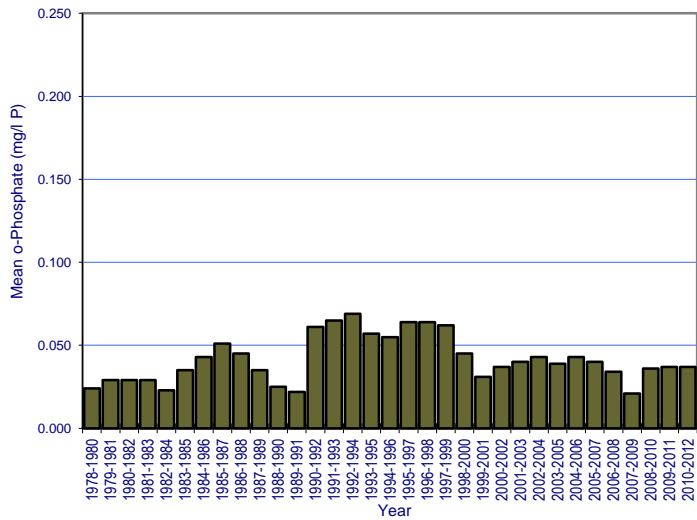
River: Mountain Water

Station No.: 0500



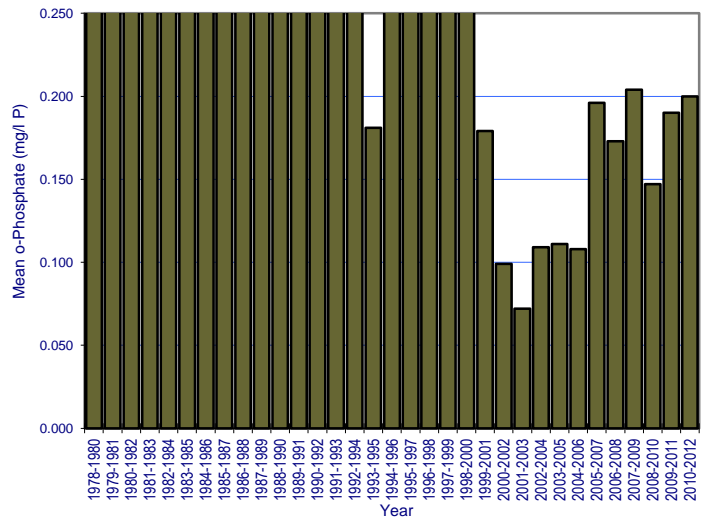
River: Proules

Station No.: 0100



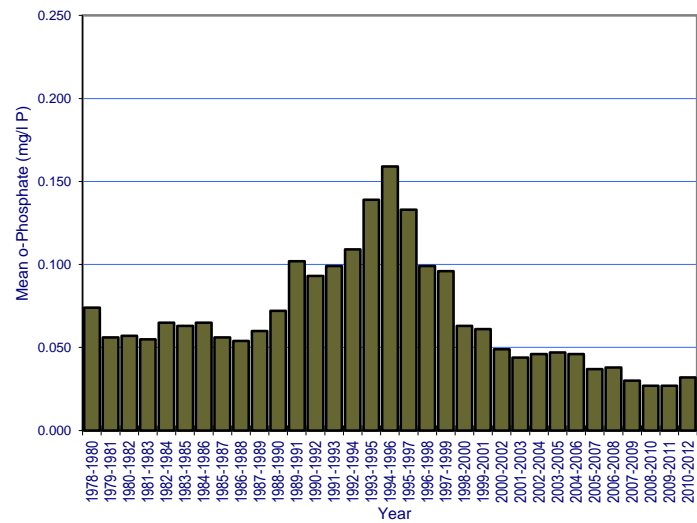
River: Proules

Station No.: 0300



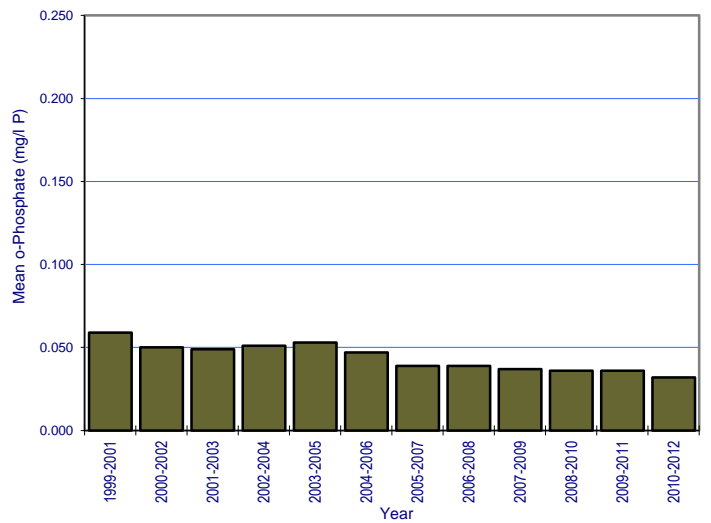
River: Proules

Station No.: 0500

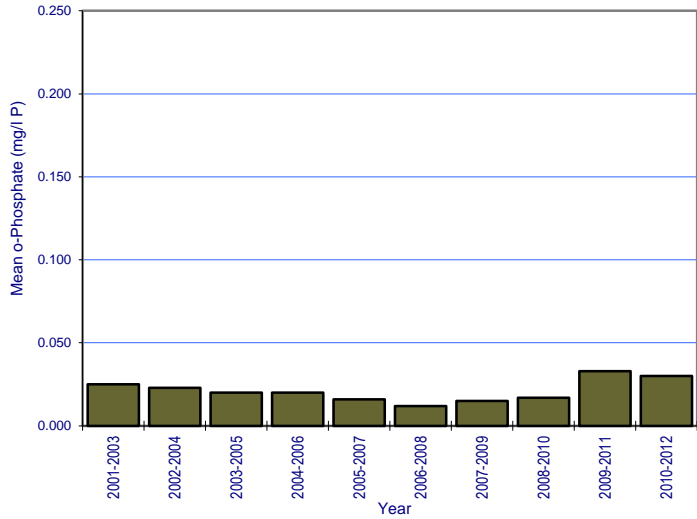


River: Rossdreenagh

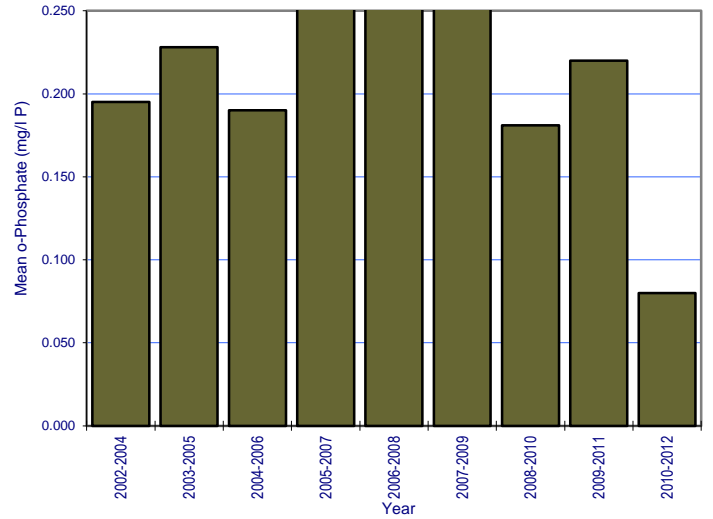
Station No.: 0400



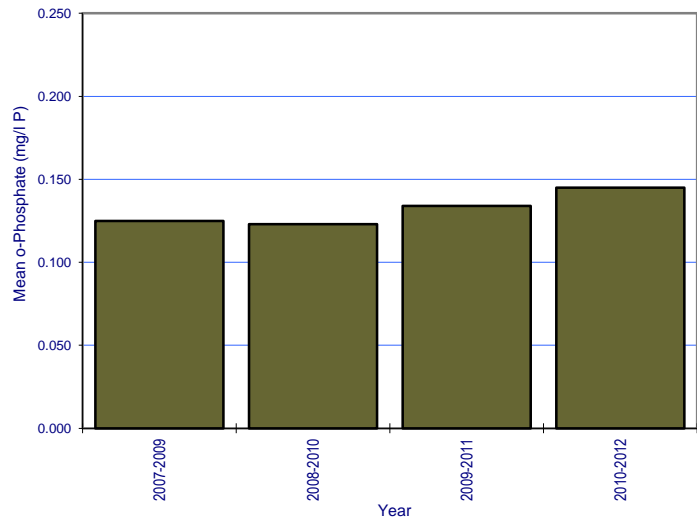
River: Scotstown Station No.: 0500



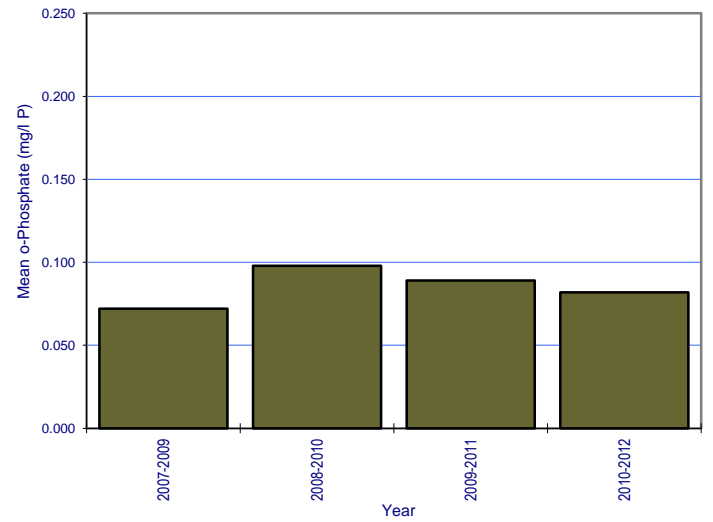
River: Shambles Station No.: 0500



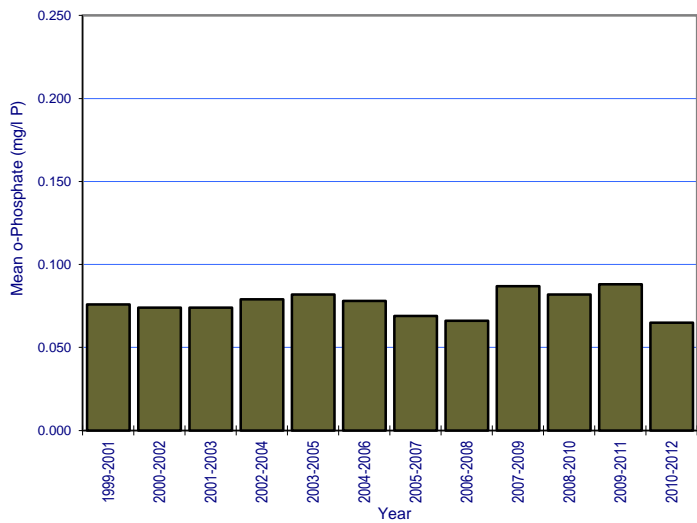
River: Termonfeckin Station No.: 0250



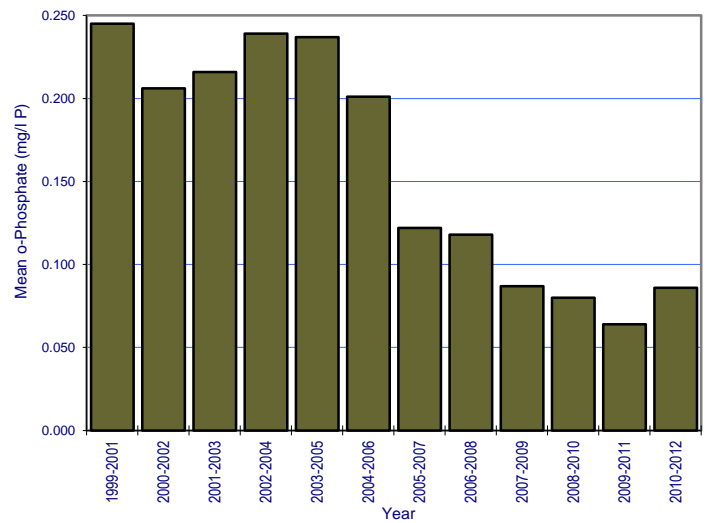
River: White (Louth) Station No.: 0040



River: White (Louth) Station No.: 0100



River: White (Louth) Station No.: 0400



River: White (Louth) Station No.: 0500

