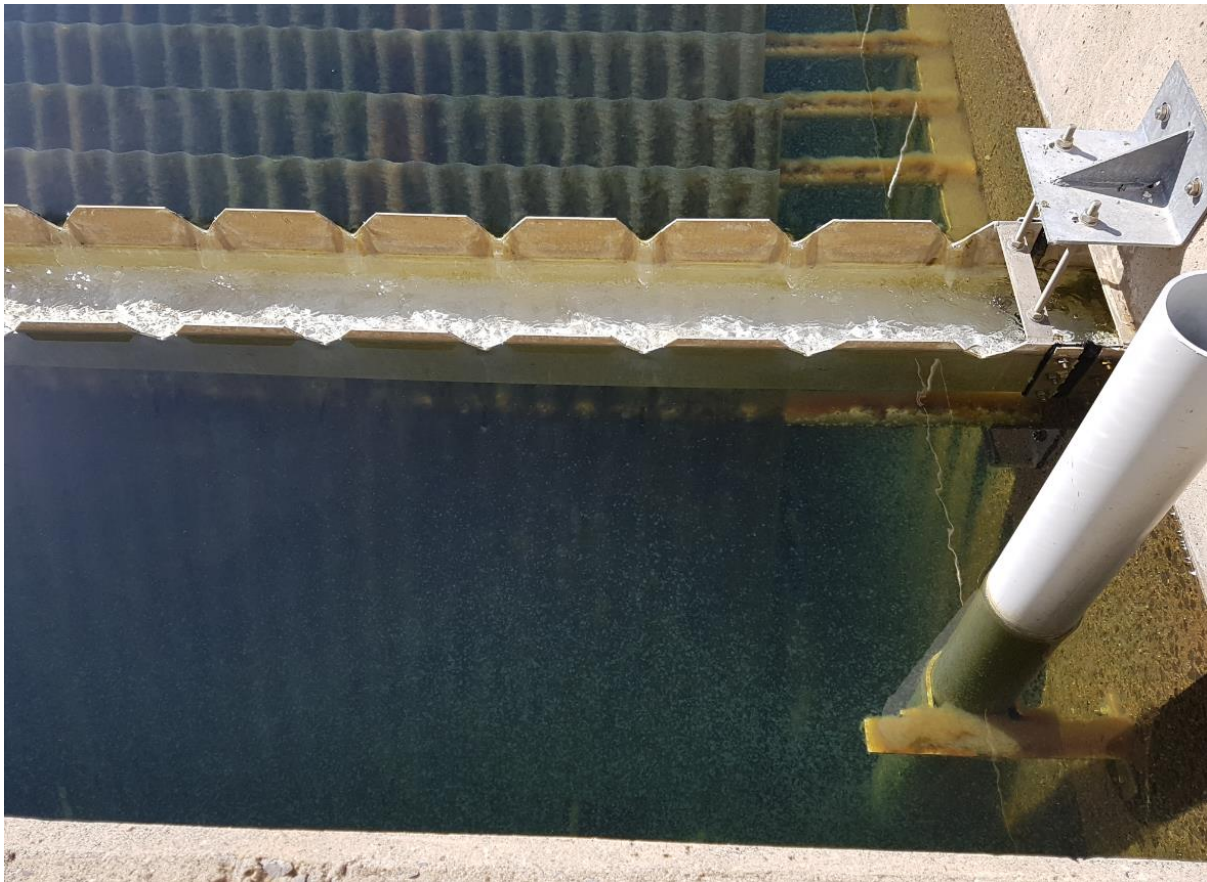




## Photographs



**Photo 1** Pin floc evident in the clarifiers



**Photo 2** Alum tanks in use unbunded



**Photo 3** Caustic Soda tanks not in use and not banded



**Photos 4 & 5: Two lagoons storing supernatant**

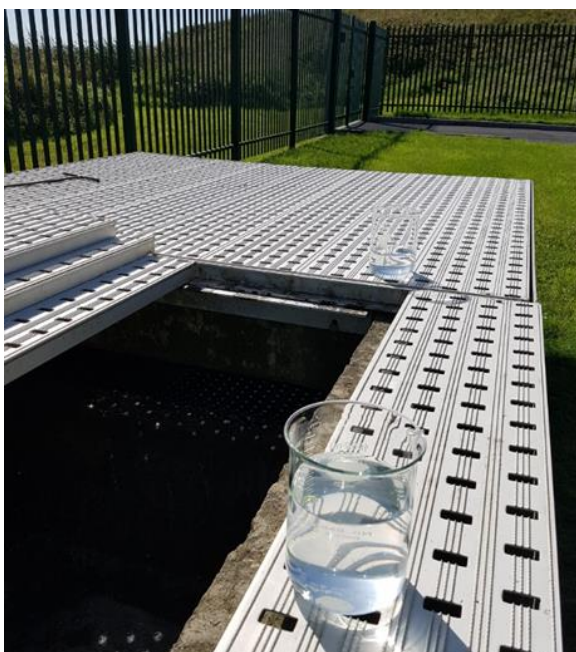




**Photo 6** Sludge build up in drain to Lough Corrib at effluent/supernatant discharge point



**Photos 7 & 8** Redundant raw water balance tanks now in use to store supernatant allowing for additional settlement prior to discharge to Lough Corrib



**Photo 9** Clear supernatant in beaker - taken from final effluent prior to discharge to Lough Corrib