



BUILDING A JUST TRANSITION: **COMMUNITY WEALTH** & CIRCULARITY



**PRESENTATION TO
EPA CIRCULAR ECONOMY
CONFERENCE 2025**

WEDNESDAY, SEPTEMBER 24TH, 2025



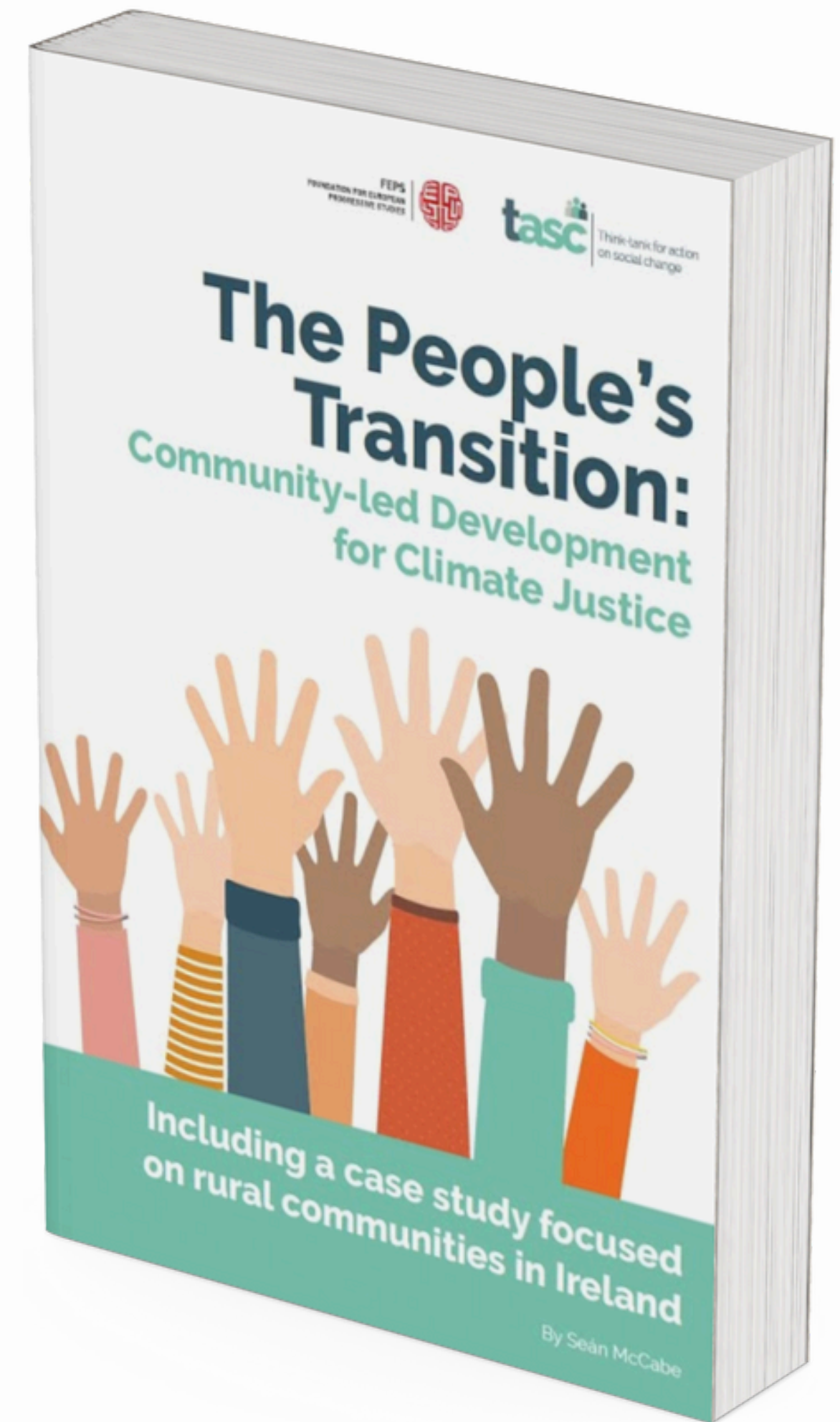
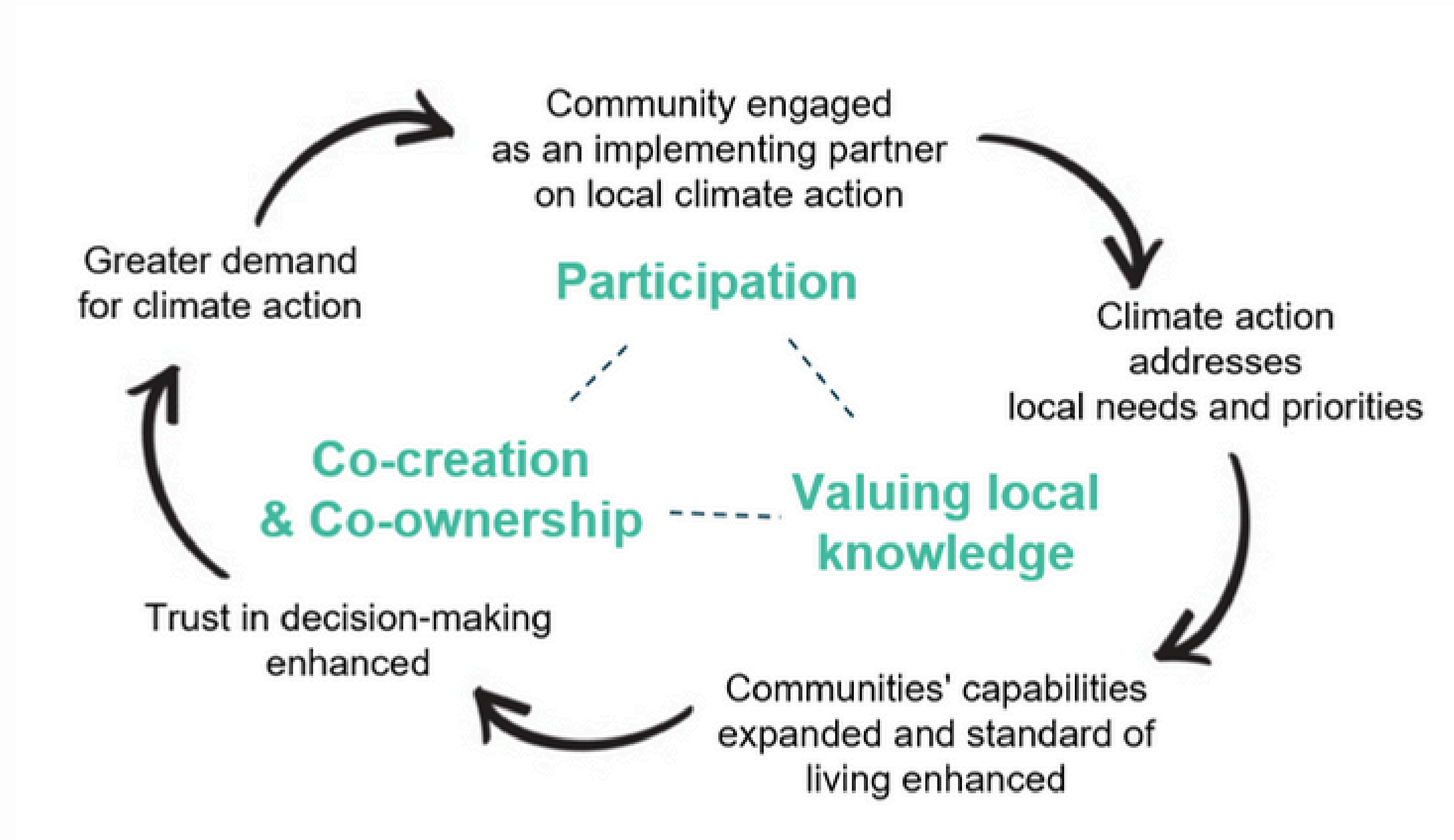


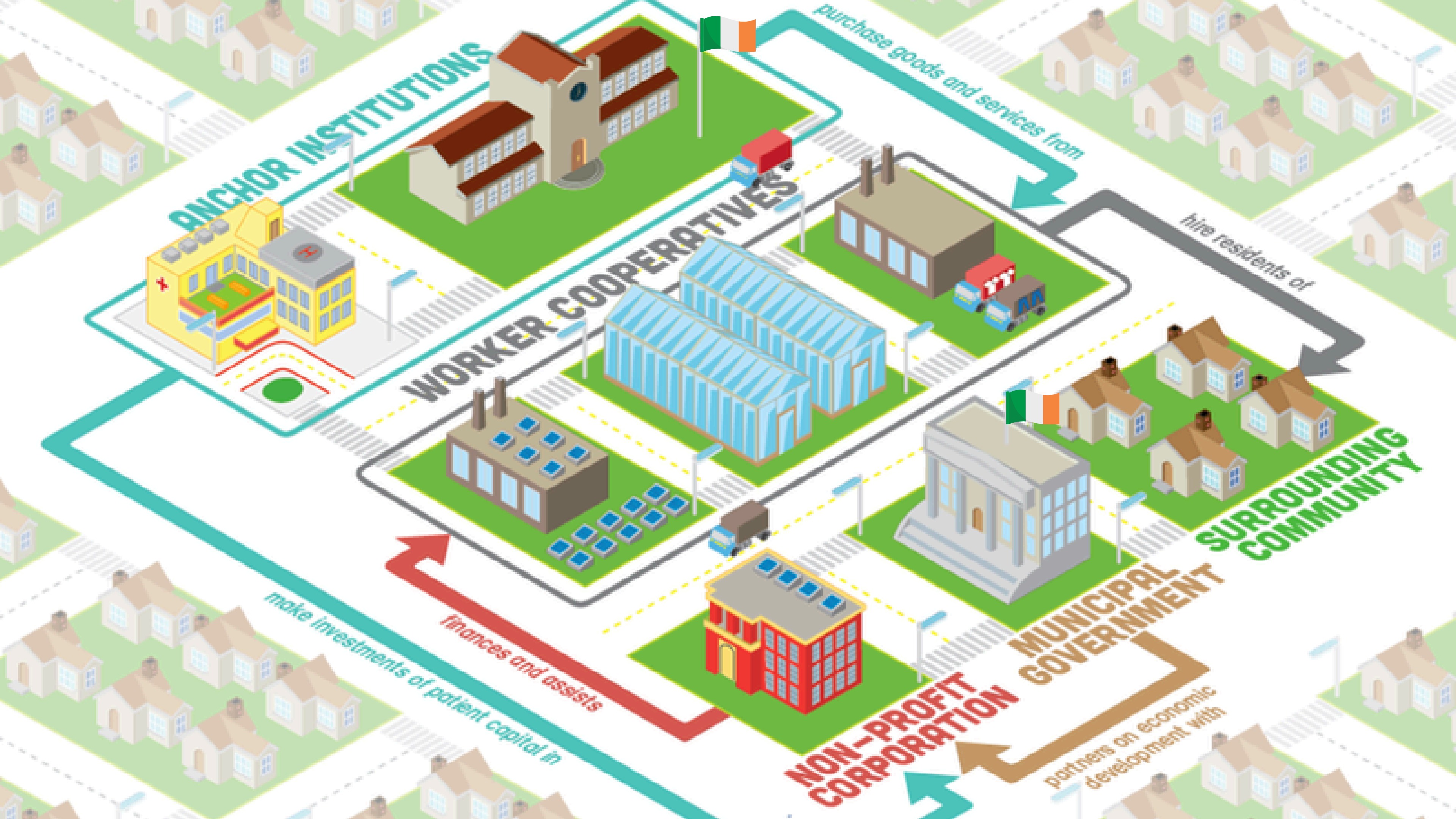
OUR JOURNEY SO FAR...





THE PEOPLE'S TRANSITION (2020)









CLIMATE ACTION





CLIMATE ACTION

POVERTY

INEQUALITY

HOUSING CRISIS

COST OF LIVING CRISIS



CLIMATE ACTION

POVERTY

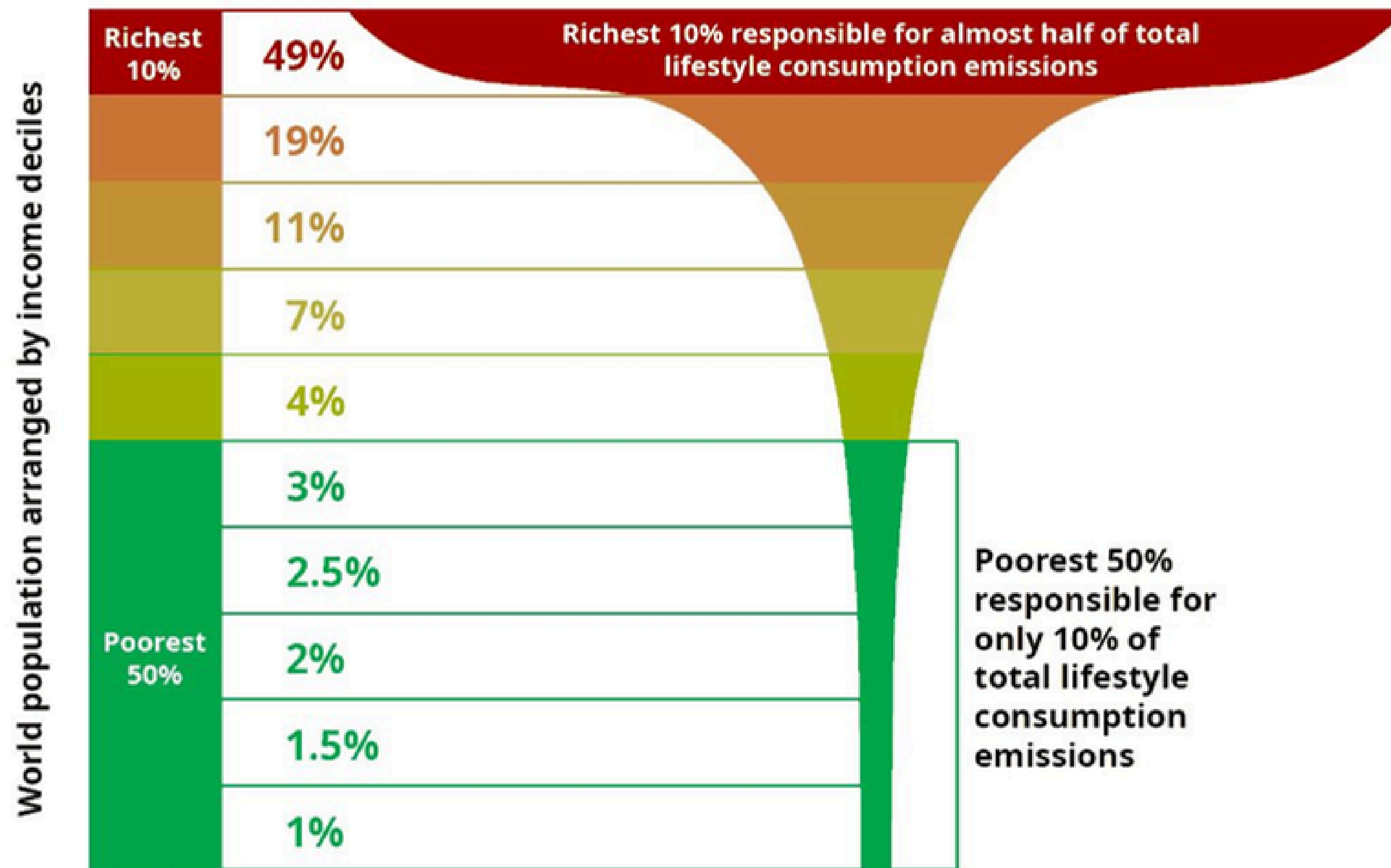
INEQUALITY

HOUSING CRISIS

COST OF LIVING CRISIS

**WE CANNOT FOCUS
SOLELY ON THE
BOULDER AND
IGNORE THE HILL**

Percentage of CO₂ emissions by world population



**PEOPLE'S CIRCUMSTANCES
DETERMINE WHETHER THEY CAN
ACT ON CLIMATE CHANGE**



AFFORDABILITY & INCLUSION

43% of Bohs members & fans have difficulty paying their electricity bill some or most of the time.





United Nations
Climate Change

WHAT CLIMATE ACTIONS ARE FANS ABLE TO **ACCESS?**

RESPONSE



Already have it	23%	39%	14%	14%	40%	19%
Intend to get it	21%	30%	20%	26%	27%	32%
Aware of it but can't afford it	43%	24%	43%	54%	26%	44%
Unaware of it	14%	8%	23%	5%	7%	6%







BELONGING

An aerial photograph of a city street, likely in Washington D.C., showing a large crowd of people gathered on the street. The Washington Monument is visible in the background, rising above the city skyline. The image is darkened to serve as a background for the text.

WE CAN USE
ECONOMIES OF SCALE
TO BUILD
COMMUNITY WEALTH
THROUGH
CLIMATE ACTION



OUR WORK...























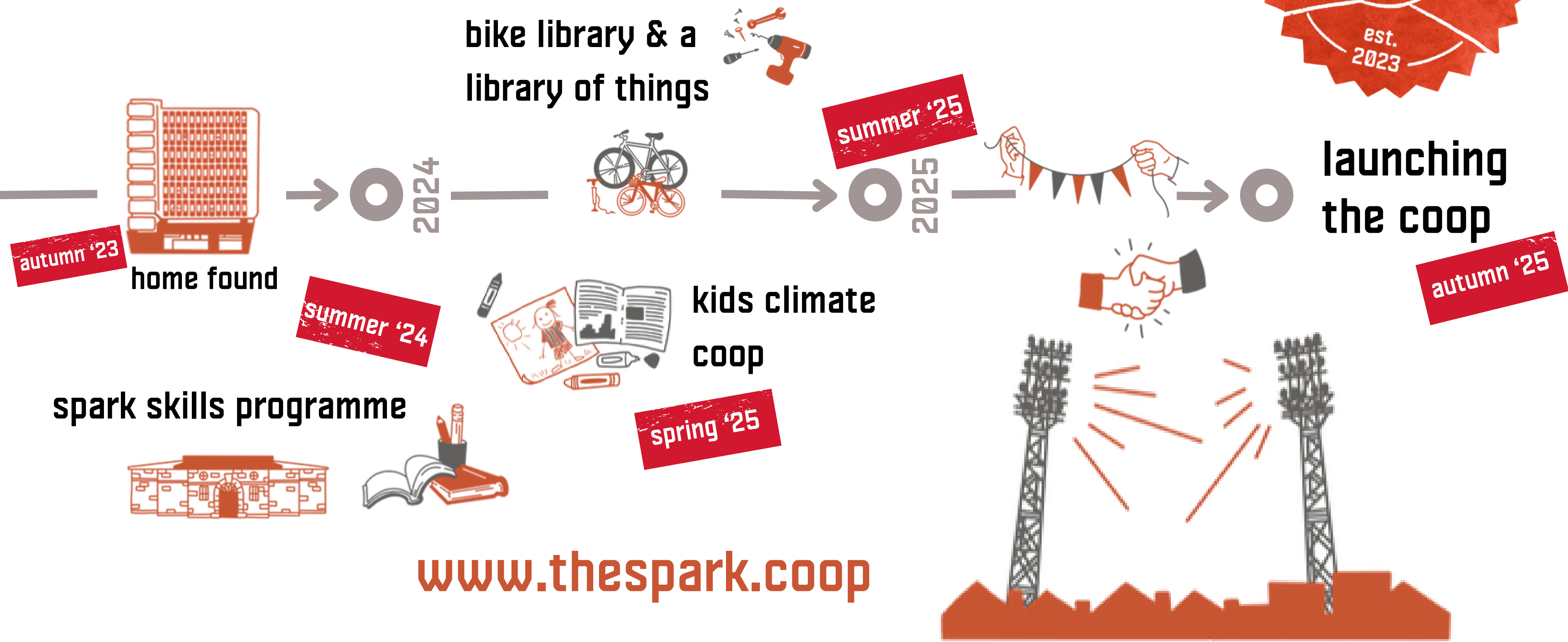








THE SPARK TIMELINE



www.thespark.coop

OUR NORTH STAR

A long-exposure photograph of a night sky showing star trails. The stars appear as white and blue streaks against a dark blue background. The trails are curved, indicating the Earth's rotation. In the foreground, there is a dark, silty landscape with some low-lying vegetation and a small hill in the distance.



MONDRAGÓN





***JOSÉ MARÍA
ARIZMENDIARRIETA
1956***

"THE WORKERS WILL NOT BELIEVE IN THE CHURCH'S SOCIAL DOCTRINE IF THEY CANNOT SEE IT PUT INTO PRACTICE THROUGH WORK FOR SOCIETY..."

...THE COOPERATIVE FORMULA REQUIRES HUMAN ACTIVITY TO SHARE AND IMPLEMENT HIGHER HUMAN VALUES.

WORK, CAPITAL AND ORGANISATION ARE THEREFORE NOT ITS ENDS IN THEMSELVES, BUT MEANS FOR BETTER SERVING HUMAN INTERESTS".



MONDRAGON

92 COOPERATIVES

70,000 PEOPLE EMPLOYED

€11 BN IN REVENUE

DELEGATION OF 20

TWO-DAY DEEP DIVE GUIDED BY OUR HOSTS

A BONA FIDE MODEL OF ECONOMIC RESILIENCE
AND DEMOCRATIC OWNERSHIP, BUT NOT
PERFECT

Post-Trip Note

Mondragón Study Visit

June 3rd – 6th, 2025



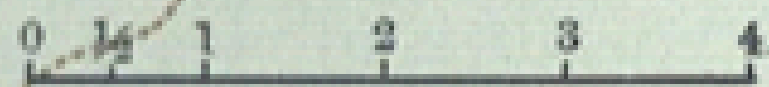
Community
Foundation
Ireland

OUR BRIDGE



CLEVELAND

and Vicinity



Scale, 4 Miles to One Inch.

L A K E E R I E

CLEVELAND

Cleveland Harbor

Union Depot

Collinwood

Ottingham

Noble Mich. Sou.

Wickliffe

Euclid

E U C L I D

Claribel

Coits

Glenville

Collamer

Blue Stone

EAST CLEVELAND

East Cleveland Monument

Garfield Monument

LAKEVIEW CEMETERY

South Euclid

Fairmount

GORDON PARK

WADE PARK

Rocky River

West Cleveland

Lakewood

Rocky River

Rockport

Willard

CHI. & ST. LOUIS

West Park

ROCKPORT

North Linndale

Brooklyn

Newburg

Warrensville

WARRENSVILLE

Corlett

W B U R G

OHIO

CUT

CH

COITS

CH

CH

CH

CH



evergreen
COOPERATIVES



CLEVELAND

6 COOPERATIVES

500+ PEOPLE EMPLOYED

TACKLING POVERTY

DELEGATION OF 3

VISITS TO EVERGREEN AND OTHER
KEY INSTITUTIONS

SOCIAL INNOVATIONS AND TEETHING
CHALLENGES TO BE LEARNED FROM



Post-Trip Note
Cleveland Study Visit

June 16th – 19th, 2025



Community
Foundation
Ireland

CLIMATE + CWB = A NEW FRONTIER

NOT JUST JOBS OR SERVICES.

CLIMATE JUSTICE AS ECONOMIC DESIGN.

THE JUST TRANSITION, MADE LOCAL. MADE REAL.

COOPERATIVE PIPELINE

- INSURANCE MUTUAL
- FOOD COOPERATIVE
- SOLAR COOPERATIVE
- LAUNDRY COOPERATIVE



**WE CAN'T DO THIS
ALONE**

BUT WHAT MIGHT OUR UNIVERSE OF PARTNERS LOOK LIKE?





THANK YOU