



EPA Evidence Framework

To provide the best evidence for our Regulatory, Advocacy and Knowledge functions



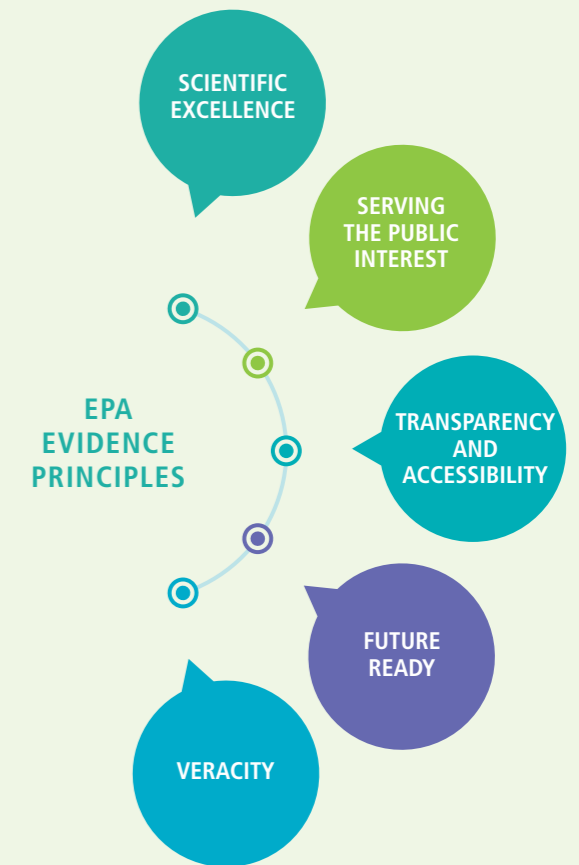
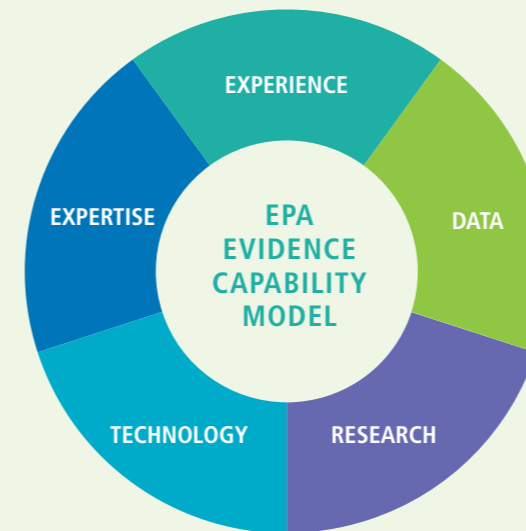
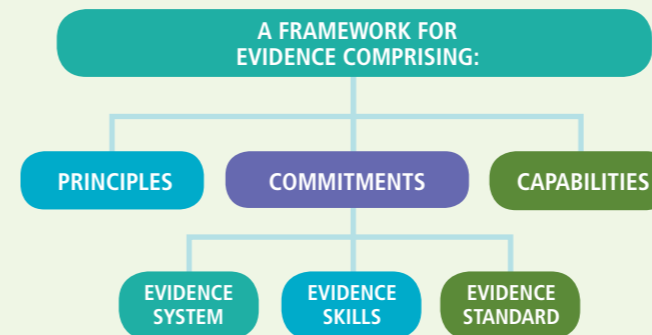
Evidence is the available body of data (facts or information) used to support a claim, a statement, a proof, an interpretation, or a decision

EVIDENCE RATIONALE FOR THE EPA

- ▶ Effective Environment and Health Protection requires good evidence.
- ▶ Evidence is at the core of verifiable knowledge.
- ▶ Our reputation and credibility are dependent on our evidence capability.
- ▶ At the heart of trust is evidence assurance.
- ▶ Systemic societal challenges imply complex evidential needs.
- ▶ Large and diverse work programmes undergoing constant change require a coherent and transferable evidential protocol.
- ▶ Open data obligations mandate strong evidence standards.

OBJECTIVES OF THE EPA EVIDENCE FRAMEWORK

- ▶ To provide the best evidence to inform policy and decision making.
- ▶ To deliver timely and better EPA assessments.
- ▶ To be more than the sum of our parts through optimising the value of our monitoring, analysis, data, assessment, and reporting activities.



SCIENTIFIC EXCELLENCE: integrity, expertise, best practice, collaborative.

SERVING THE PUBLIC INTEREST: doing the right things, for the right reasons, at the right time, in the right way.

TRANSPARENCY AND ACCESSIBILITY: assumptions and uncertainties are clear, open data committed, audience appropriate delivery, timely, multiple platforms, plain english.

FUTURE READY: strategic, agile, precautionary, interoperability, horizon scanning, rolling assessment of need.

VERACITY: accuracy, peer reviewed, right skills, quality assured, unbiased.



COMMITMENTS

Evidence System

Enabling how we do it

Knowledge Management

- ▶ Networks, COTs, mentoring, succession planning, databases

L&D / PMDS

- ▶ Continuous Professional Development, training, resourcing

Enterprise Architecture and ICT

- ▶ Data architecture, EPA Maps, GIS, assessment applications, web site, Visualisation tools

Recruitment and Talent Management

- ▶ Skills and competencies mapping, workforce planning, matching skills and resources to organisational and policy needs

Justification / Objectives

- ▶ Mission and Strategy appropriate, Need, policy question to be answered, regulatory obligations

Monitoring networks

- ▶ What, why, where, when, how

QA-QC and Scrutiny

- ▶ Procedures, quality systems, supervision

Output

- ▶ Reports, assessments, submissions, opinion, communications, indicators, applications, maps, data, prosecutions...

COMMITMENTS

Evidence Skills

Our style for doing it

Experience

- ▶ Valuing and developing experience and experiences within and across topic areas, authoritative voice

Expertise

- ▶ Recognising and fostering expertise no matter where it resides

Working with Others

- ▶ Cross Office Teams, working with internal and external stakeholders

Team Player

- ▶ Supportive, constructive, delegation

Capacity

- ▶ Commitment to CPD, matching resources to needs, maintaining technological fluency

Knowledge Sharing

- ▶ Developing others, sharing information and knowledge, coaching and mentoring

Consultative

- ▶ Open to involvement and views of others

Innovation and Adaptability

- ▶ Maintaining organisational agility and change capacity, striving for better/continuous improvement

Integrating

- ▶ Considering cross policy dimensions, maintaining awareness of sociological and economic aspects

COMMITMENTS

Evidence Standard

Our code for doing it

Accessible

- ▶ Open Data, open source web publications, plain English, multiple platforms

Communicated

- ▶ Multiple channels, audience appropriate (targeted, tailored), interoperable

Timely and Future Proof

- ▶ Periodic assessment, available when needed, preemptive, anticipating emerging needs

Collaborative / Inclusive

- ▶ Integrated, consulting all appropriate stakeholders

Credible

- ▶ Unbiased, appropriate qualifications/expertise, uncertainties and assumptions declared, considers many types and sources of evidence

Assured

- ▶ Reproducible, verifiable, peer reviewed

Risk Assessed

- ▶ Prioritisation, horizon scanning, precautionary, reflects precedence

Efficiency and Effectiveness

- ▶ Doing the right things in the right way, clarity of purpose, VFM

Contextualised

- ▶ Grounded in science and policy context (national and EU)



ENVIRONMENTAL PROTECTION AGENCY

An Ghníomhaireacht um Chaomhnú Comhshaoil
PO Box 3000, Johnstown Castle,
Co. Wexford, Ireland

Telephone +353 53 916 0600
Fax +353 53 916 0699
Email info@epa.ie
Website www.epa.ie
LoCall 1890 33 55 99

