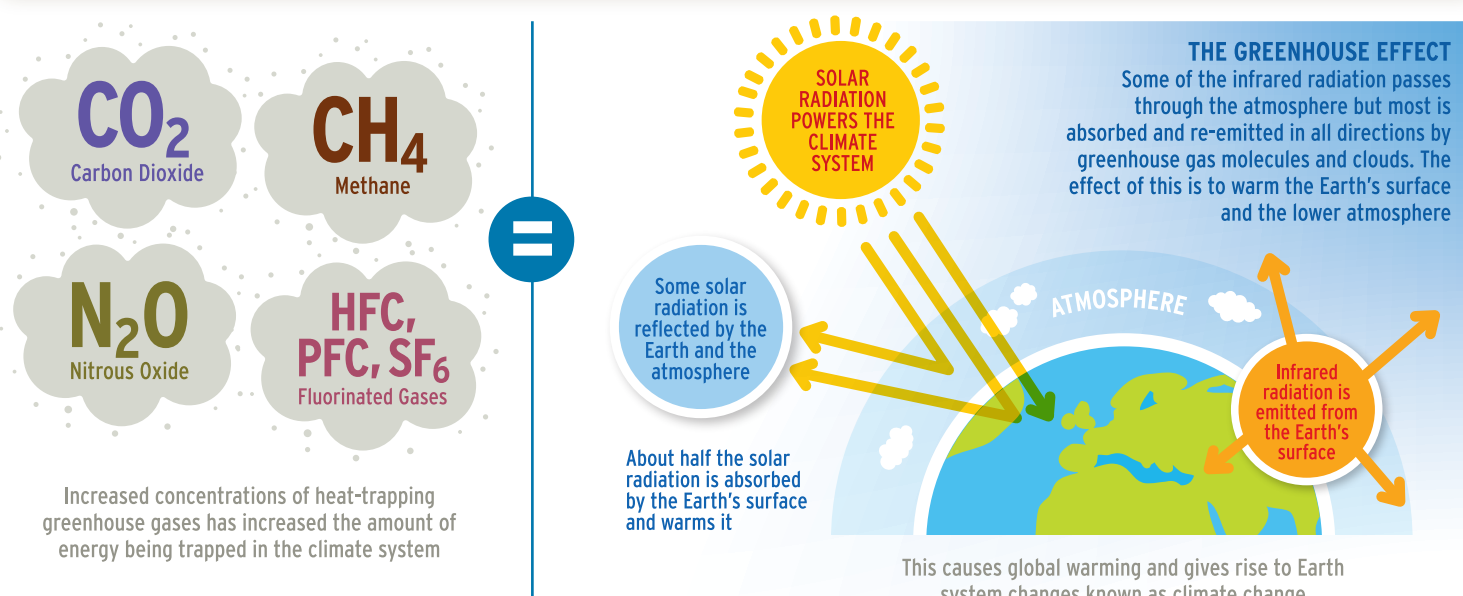


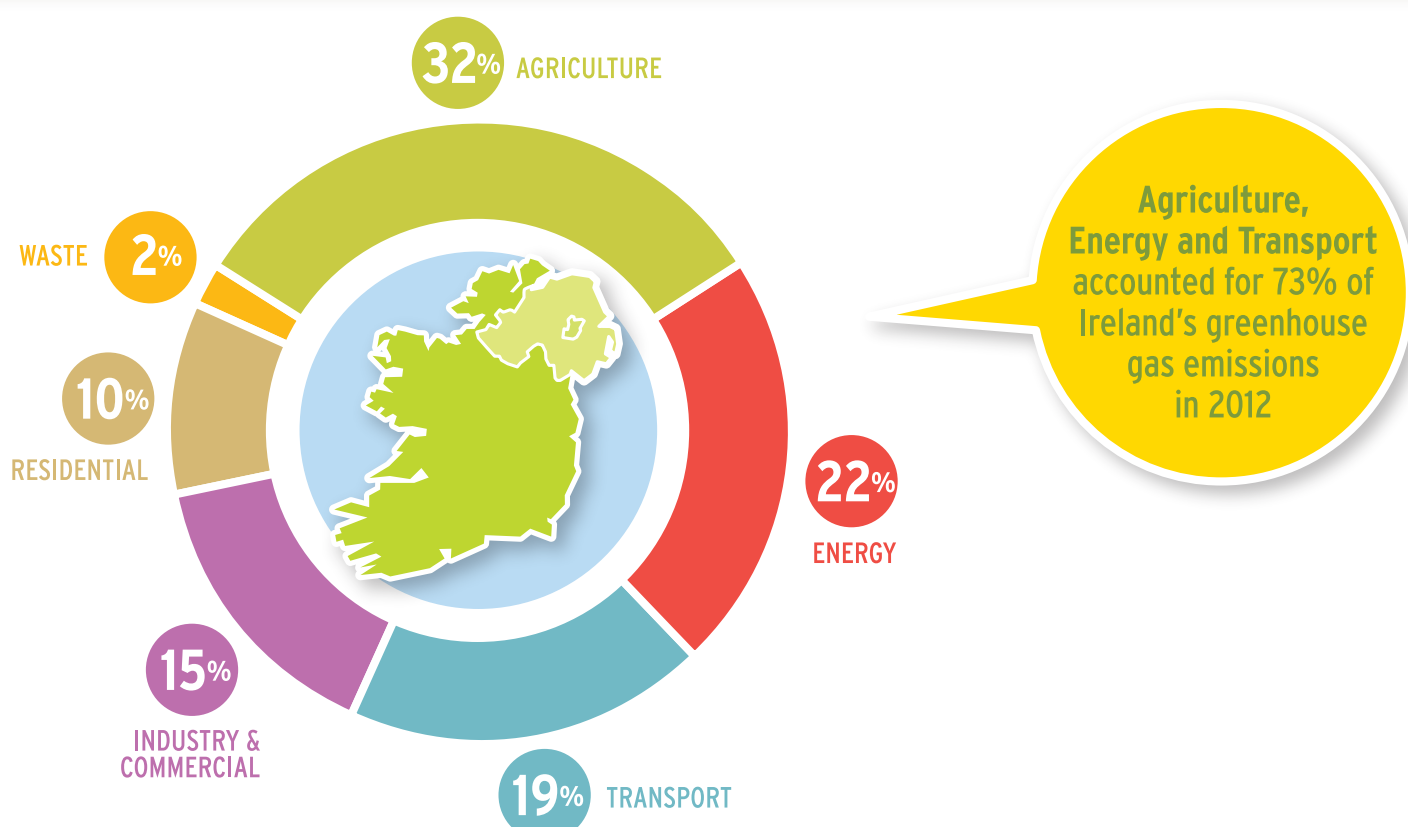
THE SIMPLE GUIDE TO IRELAND'S GREENHOUSE GAS EMISSIONS

The EPA prepares greenhouse gas emission inventories and projections annually for all relevant economic activities in Ireland. Greenhouse gas emissions are primarily regulated at an international level under the UN Framework Convention on Climate Change and at European level under the EU Effort Sharing Decision and EU Emissions Trading Scheme.

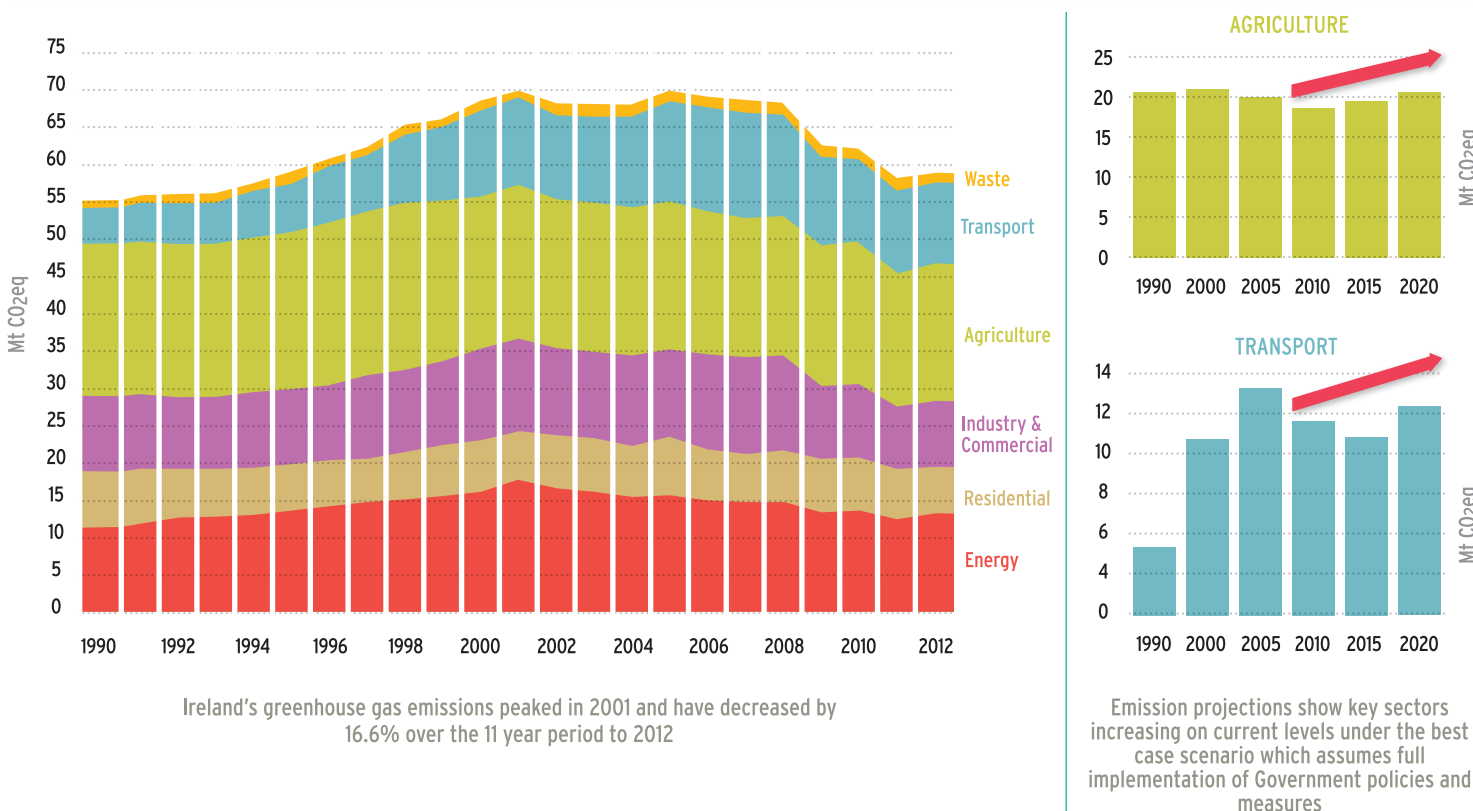
INTRODUCTION



SOURCES OF GREENHOUSE GASES

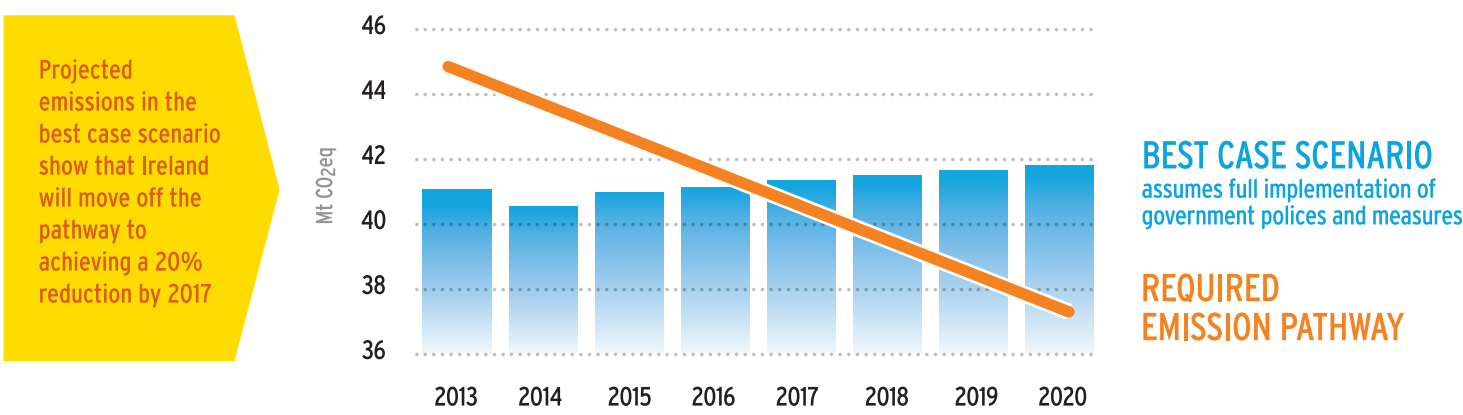
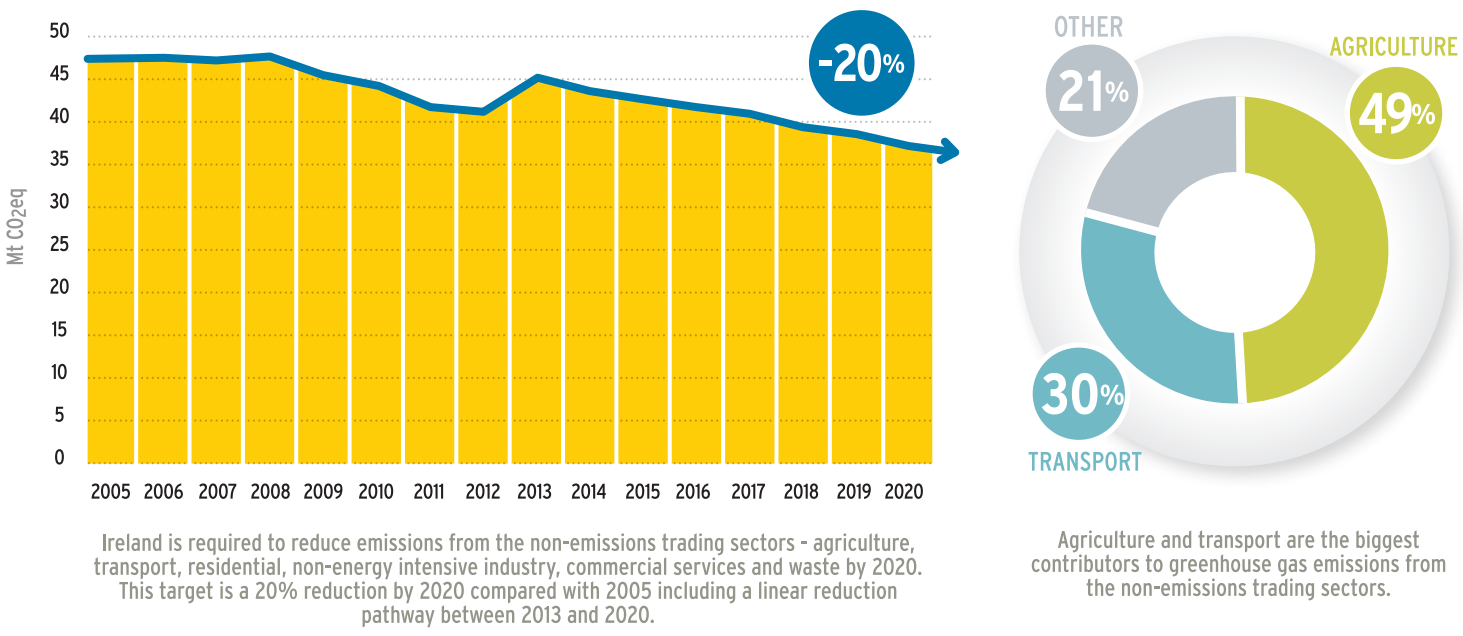


TRENDS IN GREENHOUSE GASES



NON-EMISSIONS TRADING SECTOR - 2020 TARGETS

Separate EU 2020 targets apply to the non-emissions trading sectors (agriculture, transport, residential, non-energy intensive industry, commercial services and waste) and the EU emissions trading sectors (power generation and heavy industry).



IN CONCLUSION

We must invest in structural and behavioural change to enable the transition to carbon neutral, climate resilient Ireland. These changes include the rapid decarbonisation of energy and transport and the adoption of sustainable food production, management and consumption systems.

