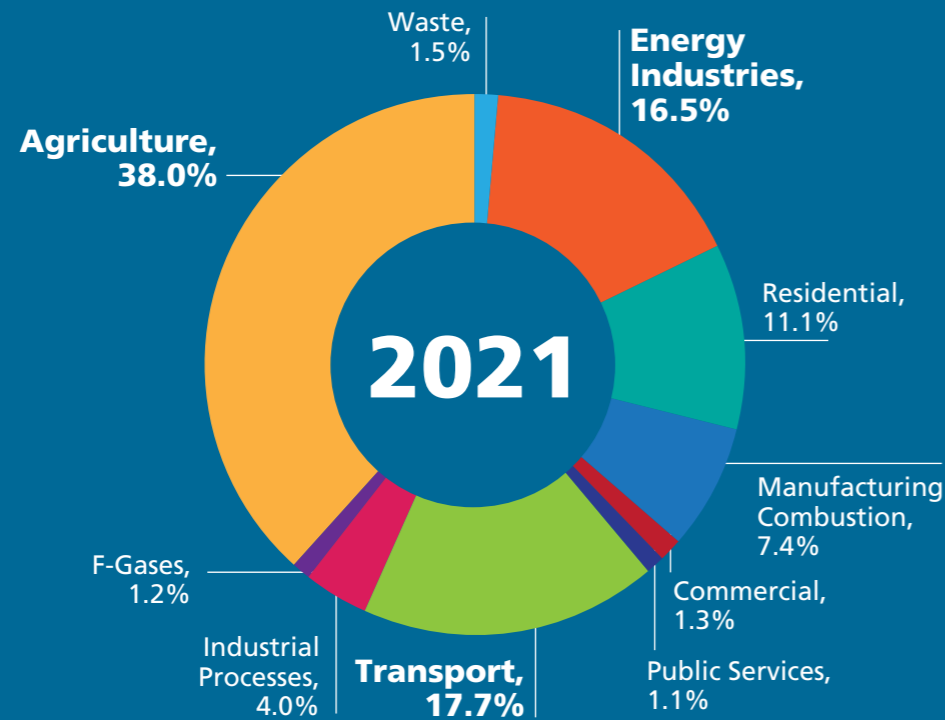
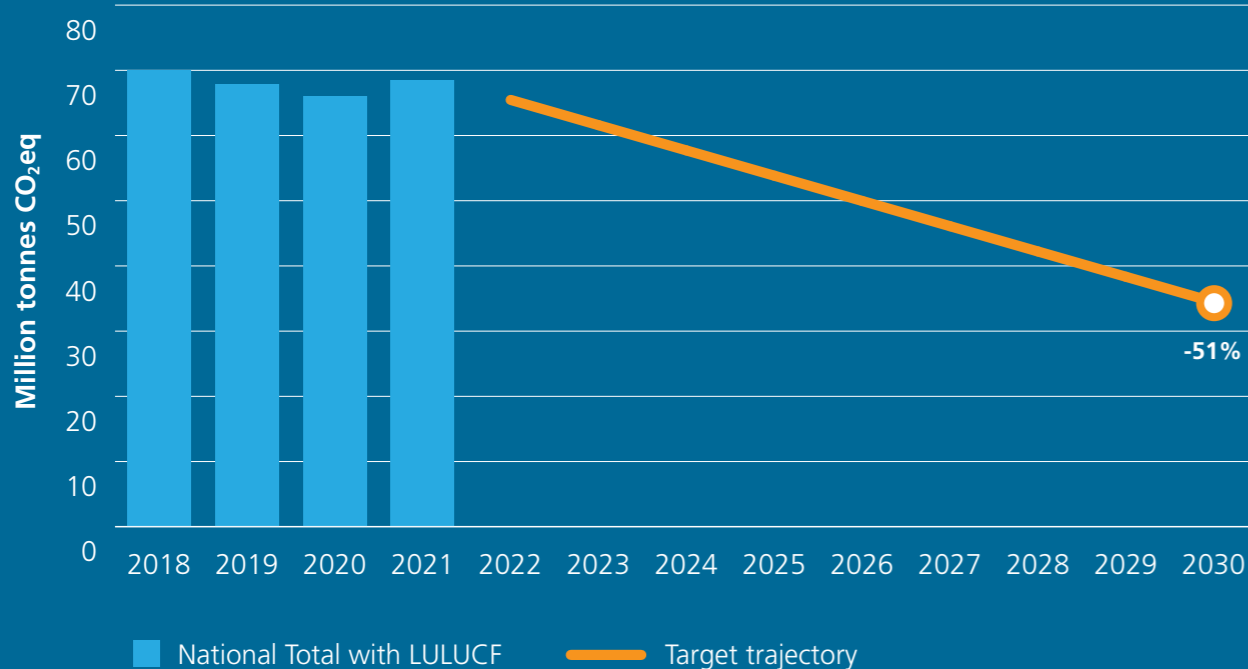


Ireland's Final Greenhouse Gas Emissions 1990-2021

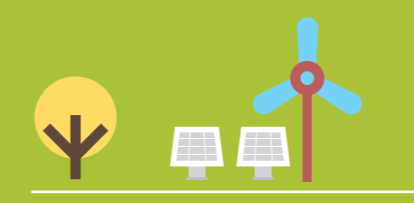
62.11 Million tonnes CO₂eq (excl. LULUCF)



2018-2030: Climate Act Target




↑ +17.6%
Energy Industries




Return to coal use in electricity generation **+246%**. Renewable share dropped from **42%** to **35%**.

↑ +3.6%
Agriculture




3rd consecutive year of emissions growth in Agriculture:
Fertiliser use **+5.2%**
Dairy cow numbers **+2.8%**
Milk production **+5.5%**

↓ -6.0%
Residential




Reduction in emissions due to less home working, a milder winter & increased fuel prices.

EU Targets




Before use of flexibilities Ireland has exceeded its 2021 annual. Effort Sharing Regulation (ESR) limit by 3.29 Mt CO₂eq.

↑ +6.7%
Transport



Rebound in emissions driven by the easing of COVID restrictions. 47,000 electric vehicles (BEV + PHEV) on Irish roads in 2021.



Learn more on www.epa.ie/ghg

Greenhouse Gas EMISSIONS

www.epa.ie
* Environmental Protection Agency 2023

What can you do?

Your means of transport
Reduce your transport carbon footprint by making use of alternatives to the private car such as:


Public Transport


Cycling


Walking

Your home
Avoiding food waste is a climate action you can do every day. Check out www.stopfoodwaste.ie

Improve the energy efficiency of your dwelling by taking up SEAI grants and enjoy a more comfortable home with a smaller carbon footprint.


Food Waste


Energy Efficiency