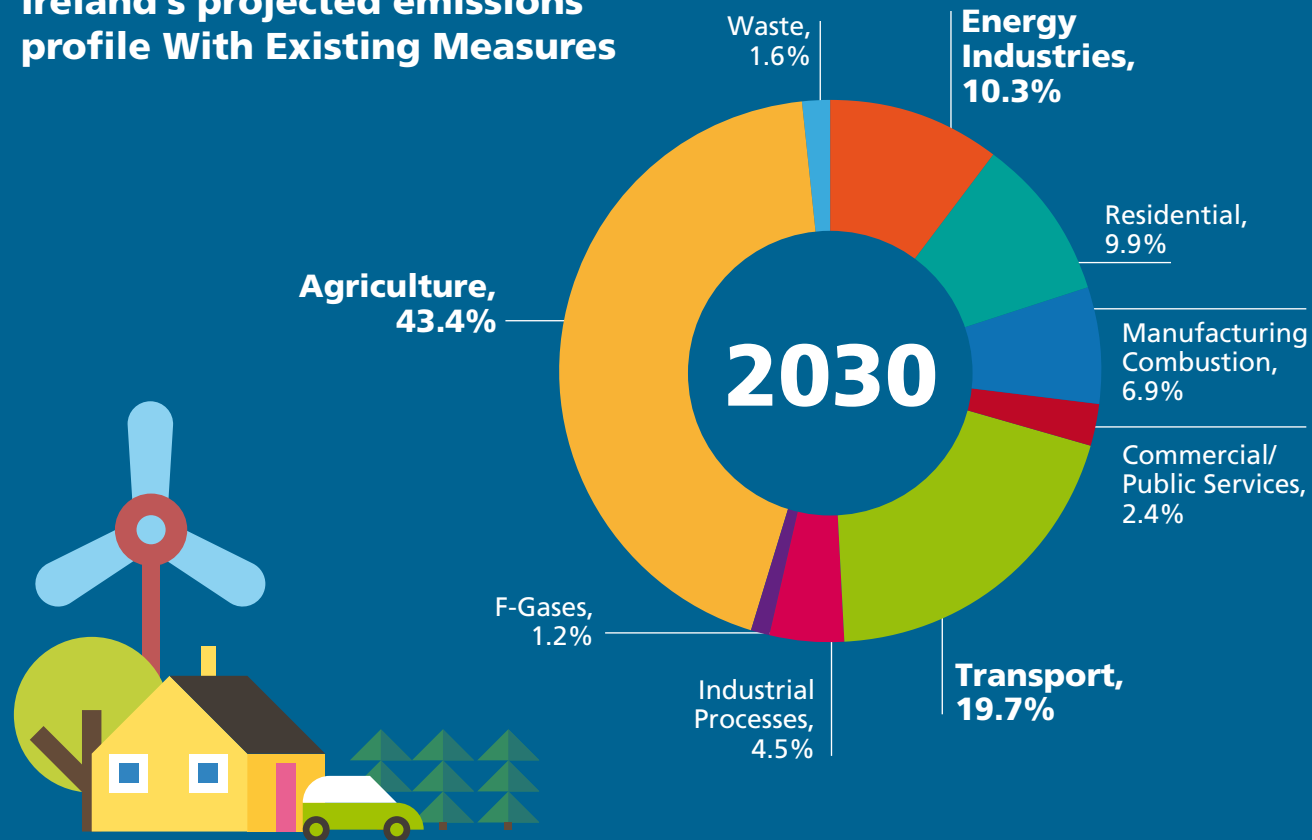
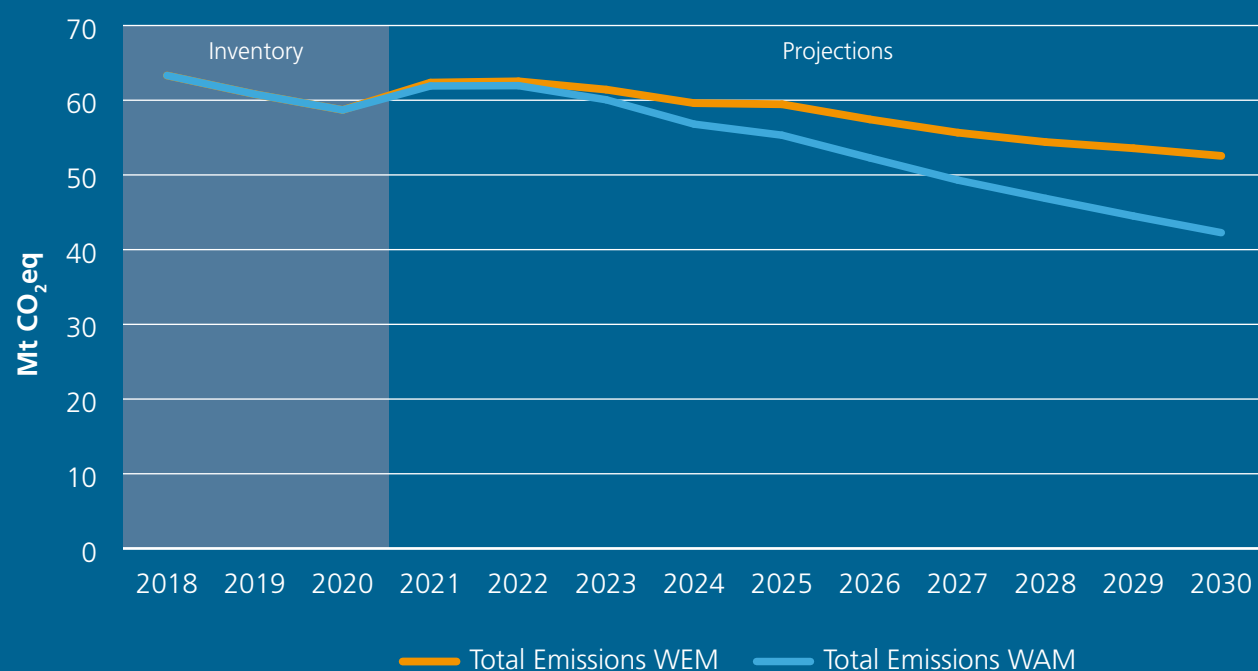


# Ireland's Greenhouse Gas Emissions Projections 2021-2030

## Ireland's projected emissions profile With Existing Measures

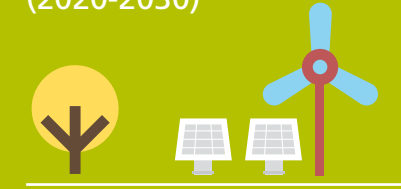


## Projected total greenhouse gas emissions 2021-2030



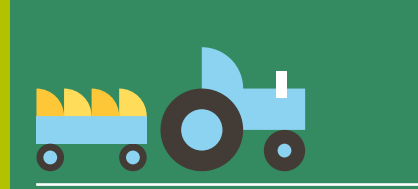
## Projected Emissions With Existing Measures

**↓38%**  
**Energy Industries**  
(2020-2030)



**70%** Energy from  
Wind and Solar by 2030

**↑1.9%**  
**Agriculture** (2020-2030)



**0.4 MtCO<sub>2</sub>** increase over  
2020-2030 period

**↓27%**  
**Residential** (2020-2030)



Heat pump grants, ban on oil  
(from 2022) and gas (from 2025)  
boilers

**↓30%**  
**Commercial & Public**  
**Services** (2020-2030)



Energy Efficiency Programmes

**↑0.6%**  
**Transport** (2020-2030)



Over **0.5 million electric**  
**vehicles** by 2030 and increased  
use of biofuel

Early implementation of  
climate and environmental  
actions needed for long term  
improvement.



Learn more on  
[www.epa.ie/ghg](http://www.epa.ie/ghg)

## What can you do?

### Your means of transport

Reduce your transport carbon footprint by making use of alternatives to the private car such as:



Public Transport



Cycling



Walking

### Your home

Avoiding food waste is a climate action you can do every day. Check out [www.stopfoodwaste.ie](http://www.stopfoodwaste.ie)

Improve the energy efficiency of your dwelling by taking up SEAI grants and enjoy a more comfortable home with a smaller carbon footprint



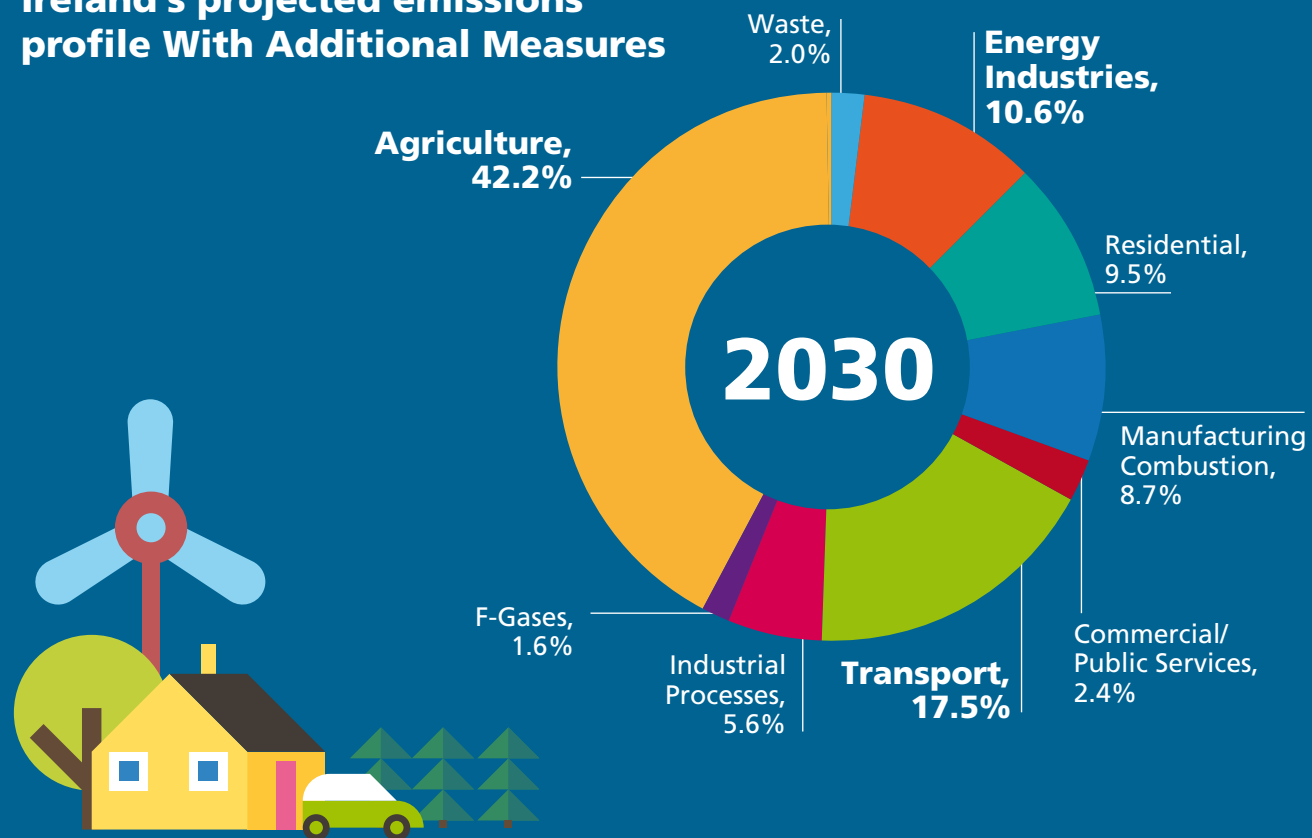
Food Waste



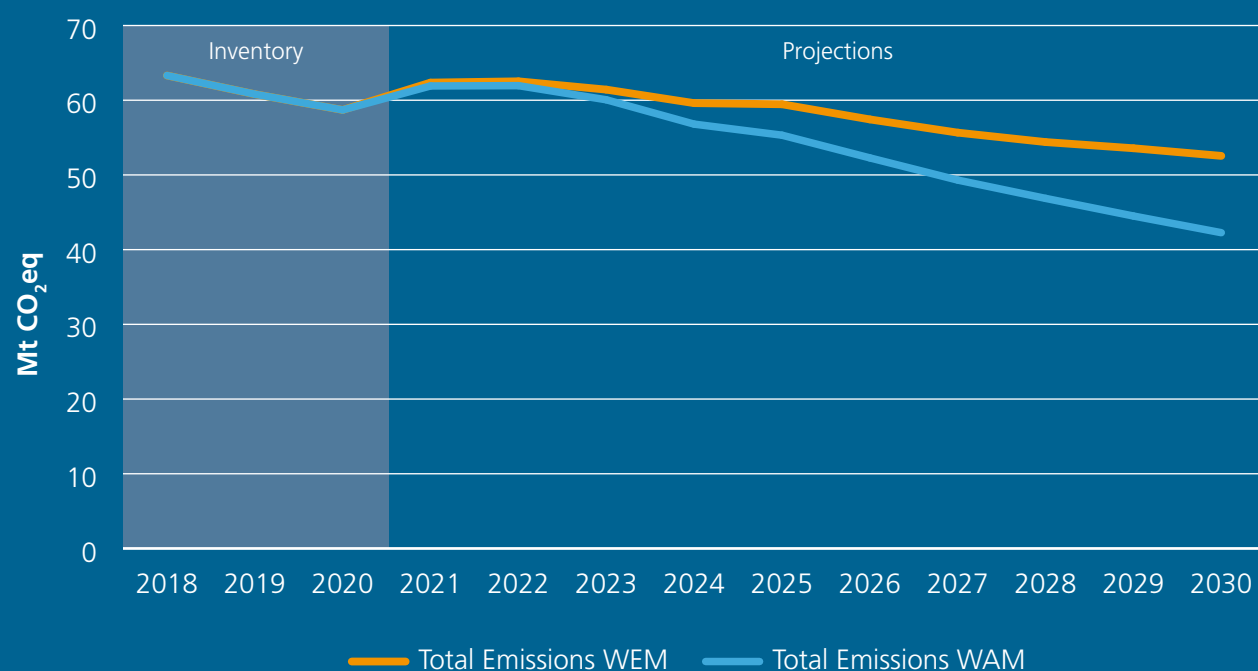
Energy Efficiency

# Ireland's Greenhouse Gas Emissions Projections 2021-2030

## Ireland's projected emissions profile With Additional Measures

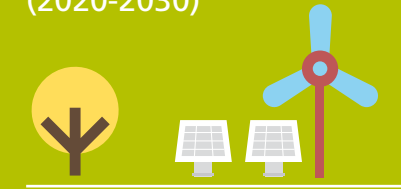


## Projected total greenhouse gas emissions 2021-2030



## Projected Emissions With Additional Measures

**↓49%**  
**Energy Industries**  
(2020-2030)



**80% Energy from Wind and Solar by 2030**

**↓20%**  
**Agriculture** (2020-2030)



**22% reduction** in Agriculture emissions compared to 2018

**↓44%**  
**Residential** (2020-2030)



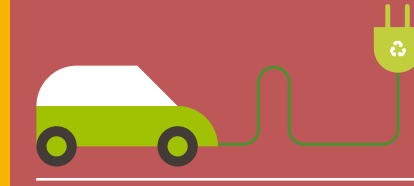
Installation of **600,000** heat pumps by **2030**

**↓46%**  
**Commercial & Public Services** (2020-2030)



Expansion of energy efficiency programmes

**↓28%**  
**Transport** (2020-2030)



Almost **1 million electric vehicles** by 2030 and increased use of biofuel

Early implementation of climate and environmental actions needed for long term improvement.



Learn more on [www.epa.ie/ghg](http://www.epa.ie/ghg)

## What can you do?

### Your means of transport

Reduce your transport carbon footprint by making use of alternatives to the private car such as:



Public Transport



Cycling



Walking

### Your home

Avoiding food waste is a climate action you can do every day. Check out [www.stopfoodwaste.ie](http://www.stopfoodwaste.ie)

Improve the energy efficiency of your dwelling by taking up SEAI grants and enjoy a more comfortable home with a smaller carbon footprint



Food Waste



Energy Efficiency