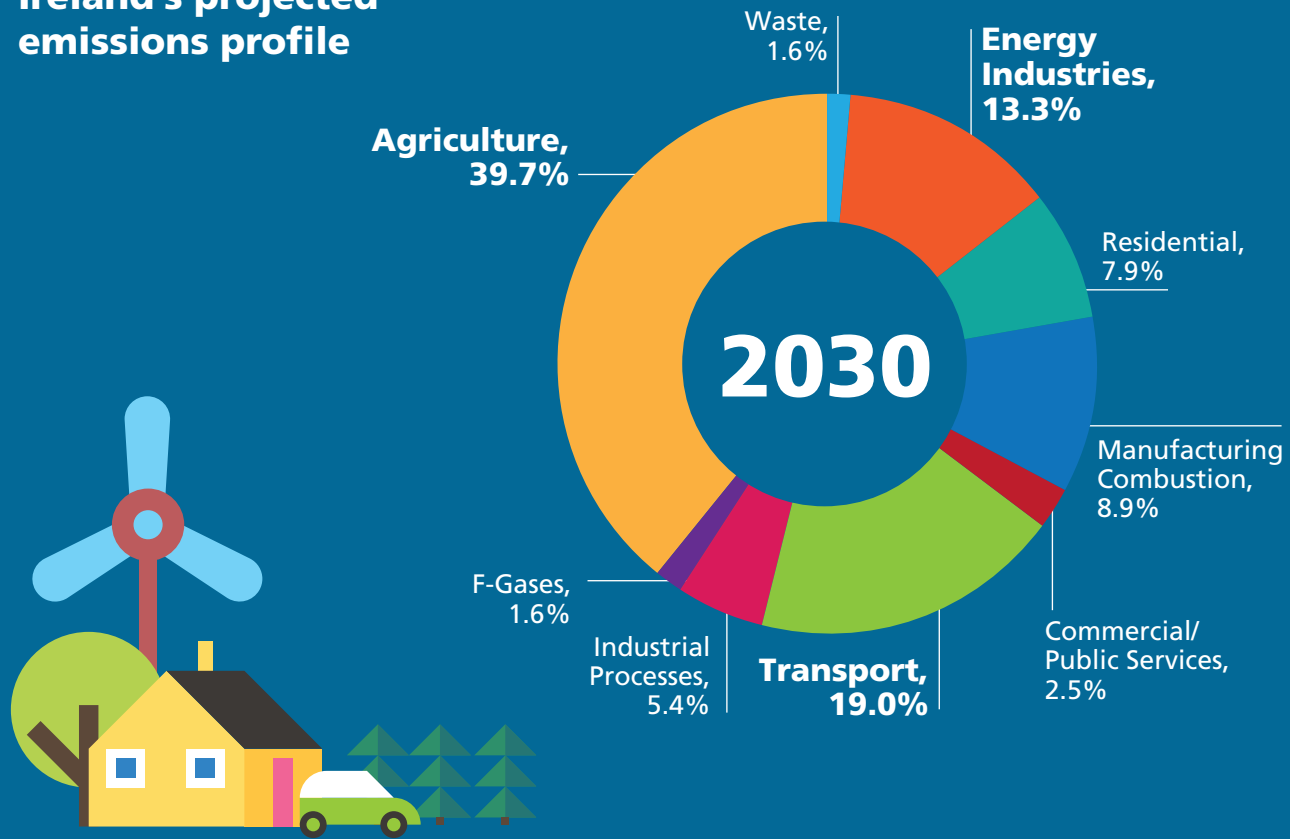
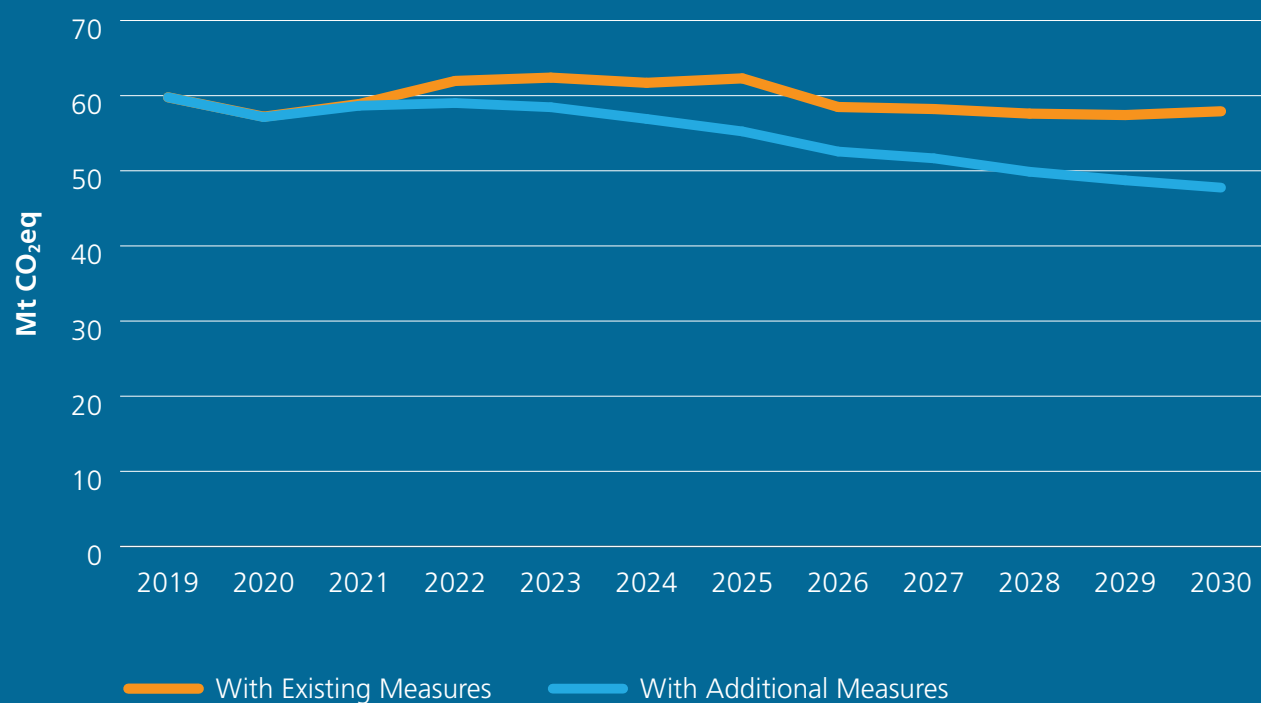



Ireland's Greenhouse Gas Emissions Projections 2020-2030

Ireland's projected emissions profile

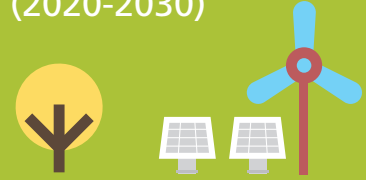


Projected total greenhouse gas emissions 2019-2030



↓25% 


Energy Industries (2020-2030)



70% Energy from Wind and Solar by 2030

↓11%


Agriculture (2020-2030)



16.5 MtCO₂ reduction over 2021-2030 period

↓47%


Residential (2020-2030)



Retrofitting 500,000 homes to a B2 equivalent BER

↓32%


Commercial & Public Services (2020-2030)



Expansion of energy efficiency programmes


↓13%

Transport (2020-2030)



Almost 1 million electric vehicles by 2030 and increased use of biofuel

Early implementation of climate and environmental actions needed for long term improvement.



Learn more on www.epa.ie/ghg



The most obvious effects of COVID on greenhouse gas emissions are projected decreases in transport emissions and an increase in residential emissions.

What can you do?

Your means of transport
Reduce your transport carbon footprint by making use of alternatives to the private car such as:


Public Transport


Cycling


Walking

Your home
Avoiding food waste is a climate action you can do every day. Check out www.stopfoodwaste.ie

Improve the energy efficiency of your dwelling by taking up SEAI grants and enjoy a more comfortable home with a smaller carbon footprint


Food Waste


Energy Efficiency