

Greenhouse gas emissions 1990-2020

Emissions Statistics Team



Paul Duffy

Damien Fahey

Bernard Hyde

Ann Kehoe

Suzanne Monaghan

James Murphy

Ann Marie Ryan

Stephen Treacy

Dr. Kevin Black (FERS)



Learn more on
www.epa.ie/ghg.



Greenhouse Gas
EMISSIONS

www.epa.ie

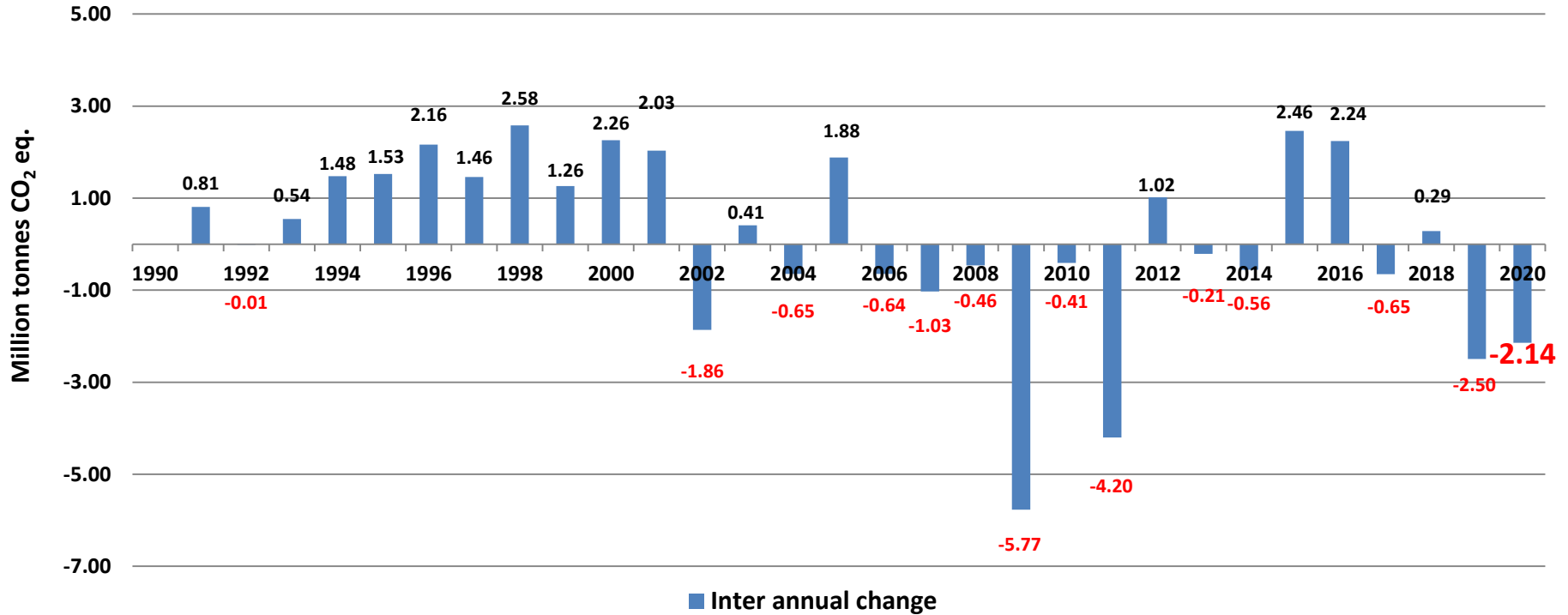
© Environmental Protection Agency 2020

Overview

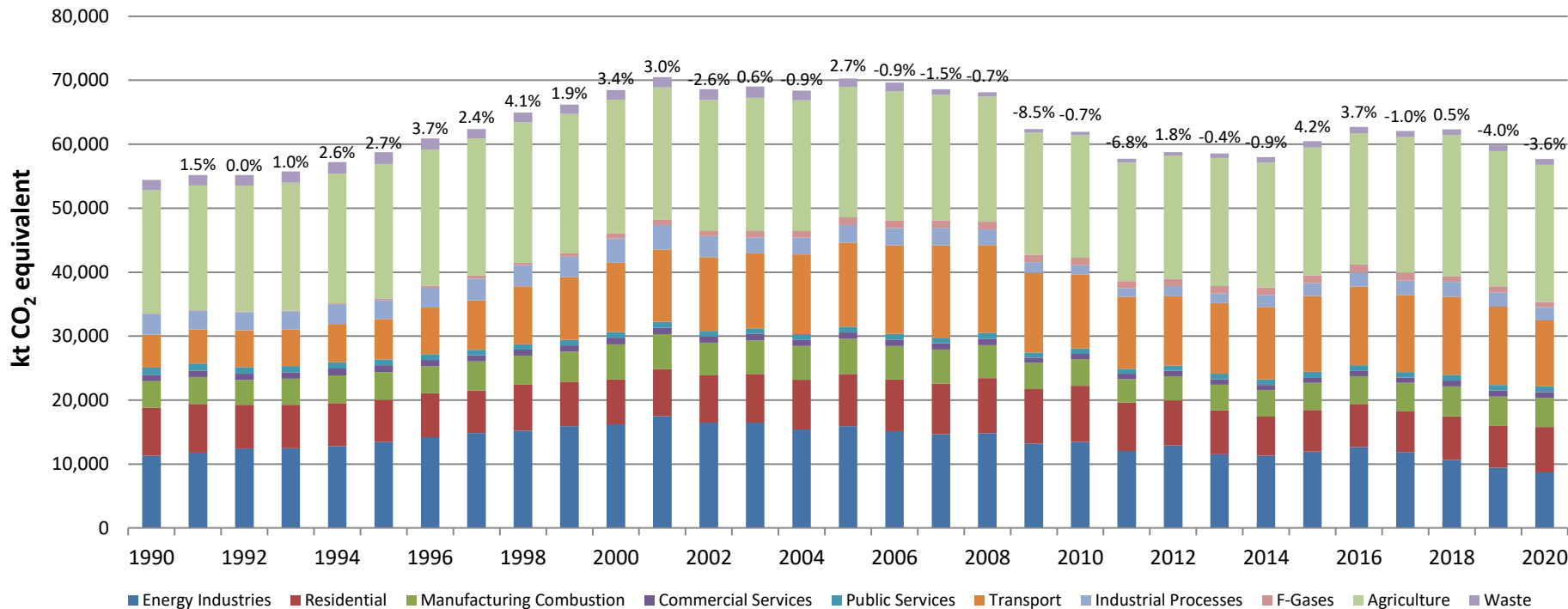


- Long term trends
- Agriculture
- Transport
- Energy Industries
- Residential
- Waste

Annual Emissions trends



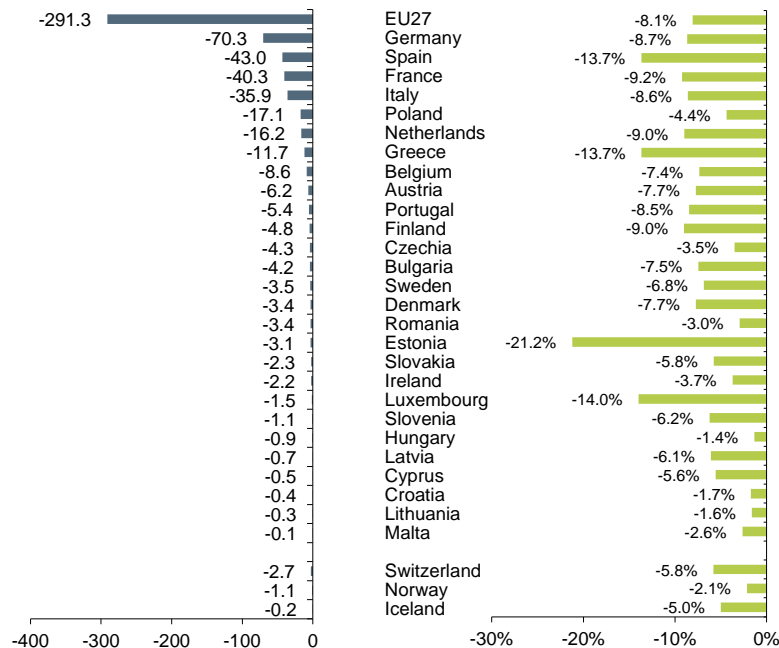
Annual Emissions 1990-2020



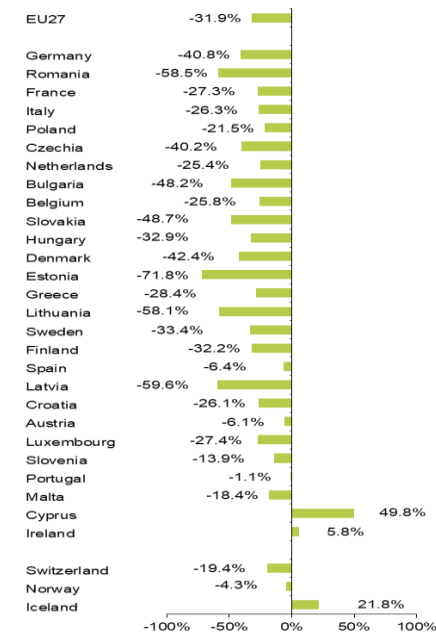
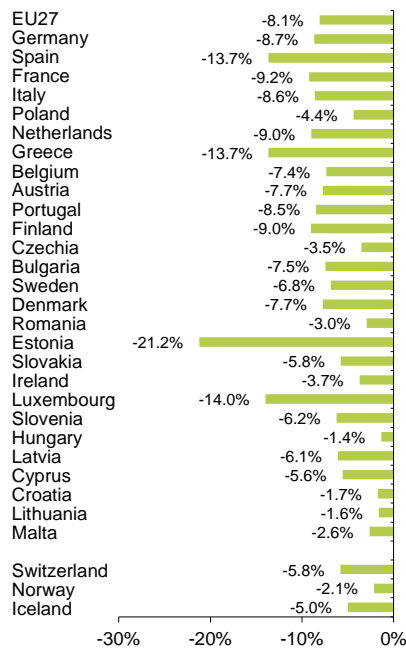
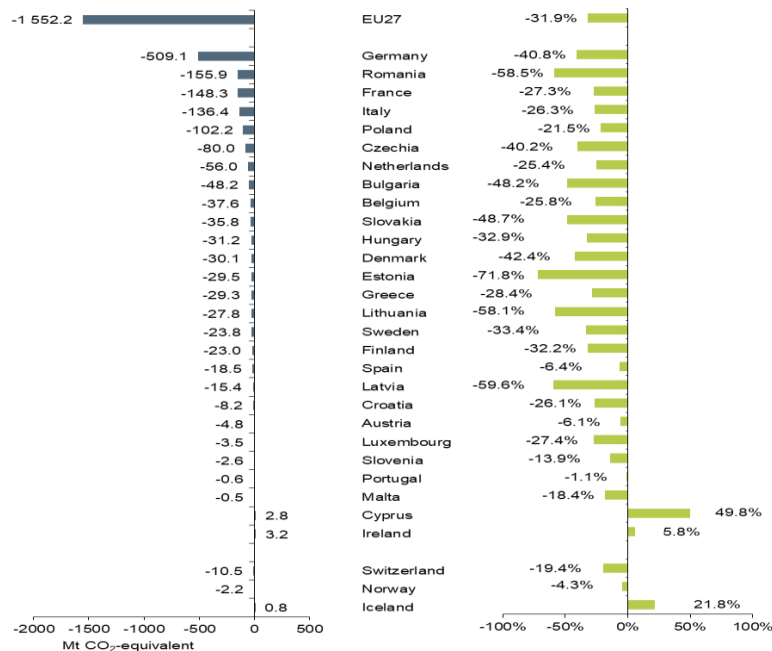
EEA proxy indicators report 2020



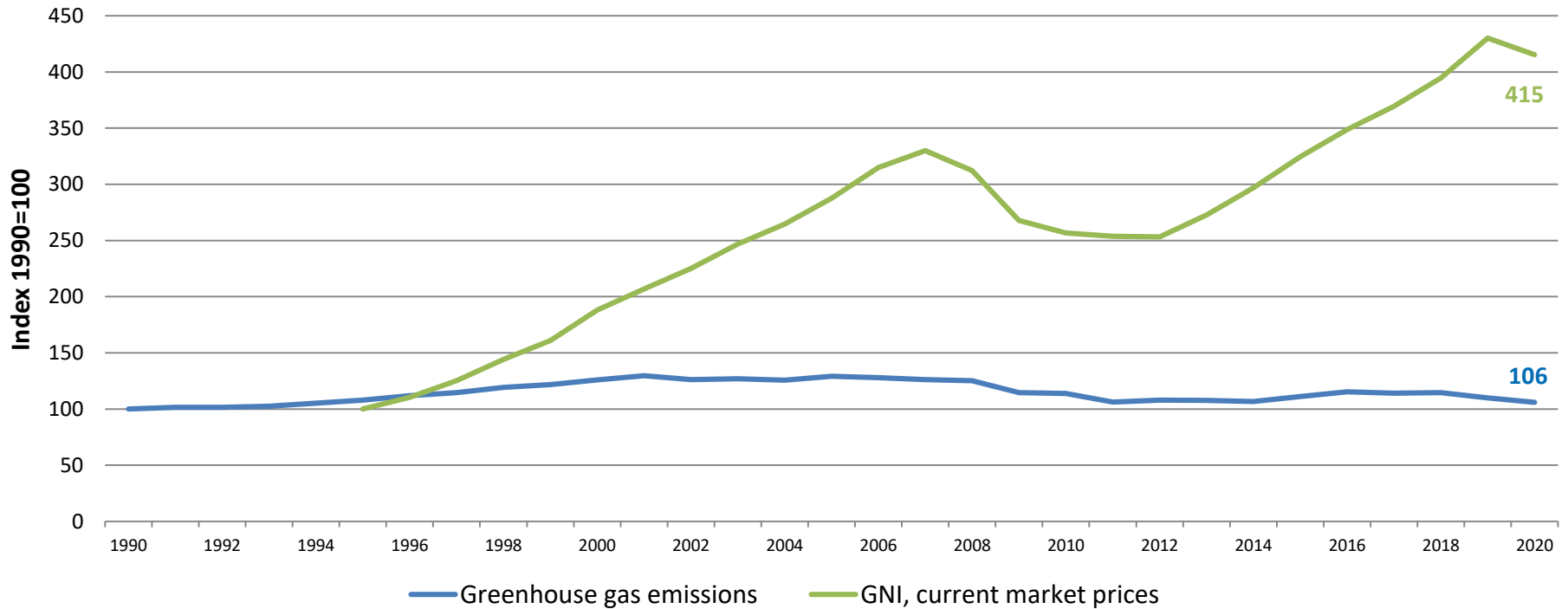
EU MS emissions change, 2019-2020



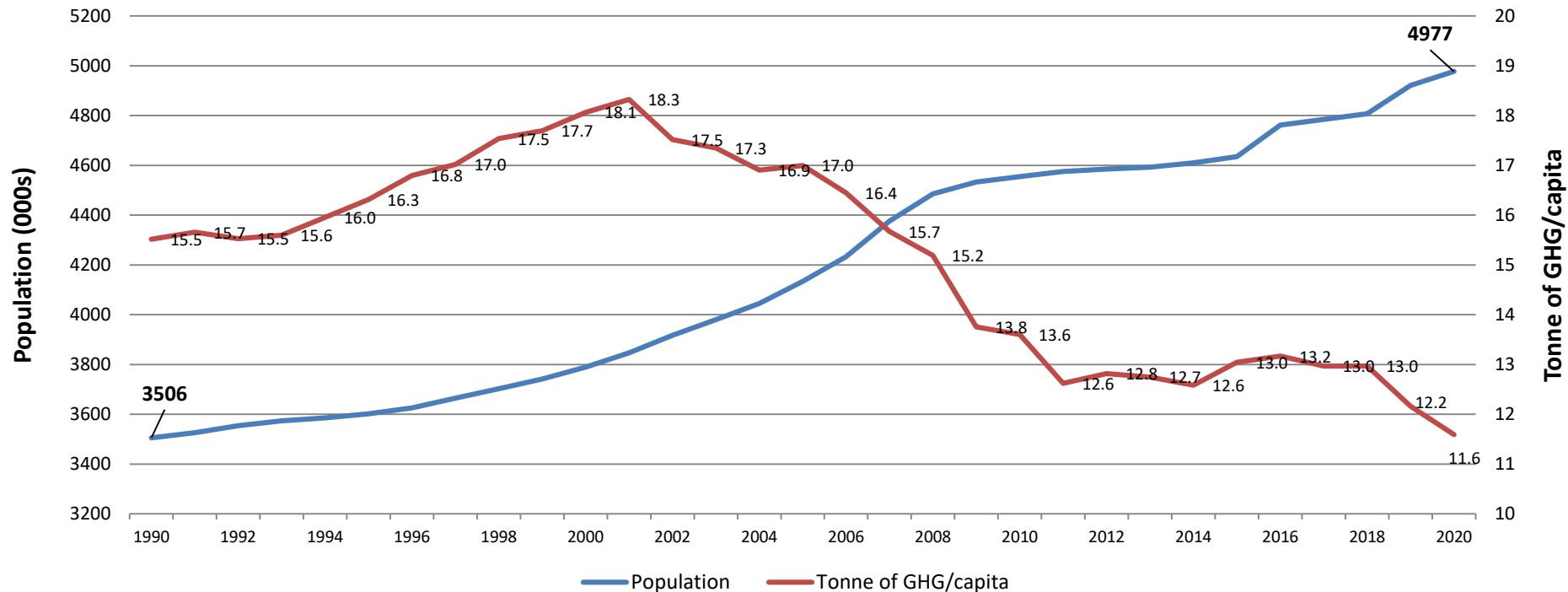
EU MS emissions change 1990-2020



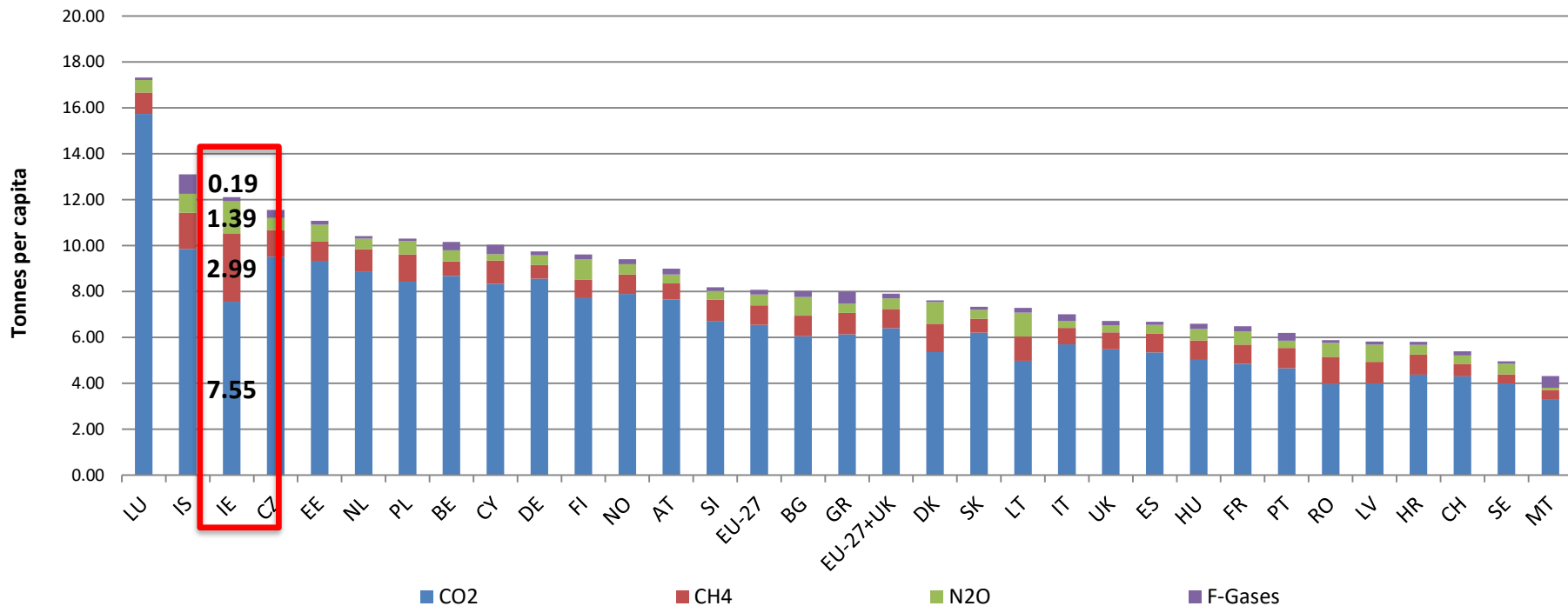
GHG emissions and GNI (relative trend)



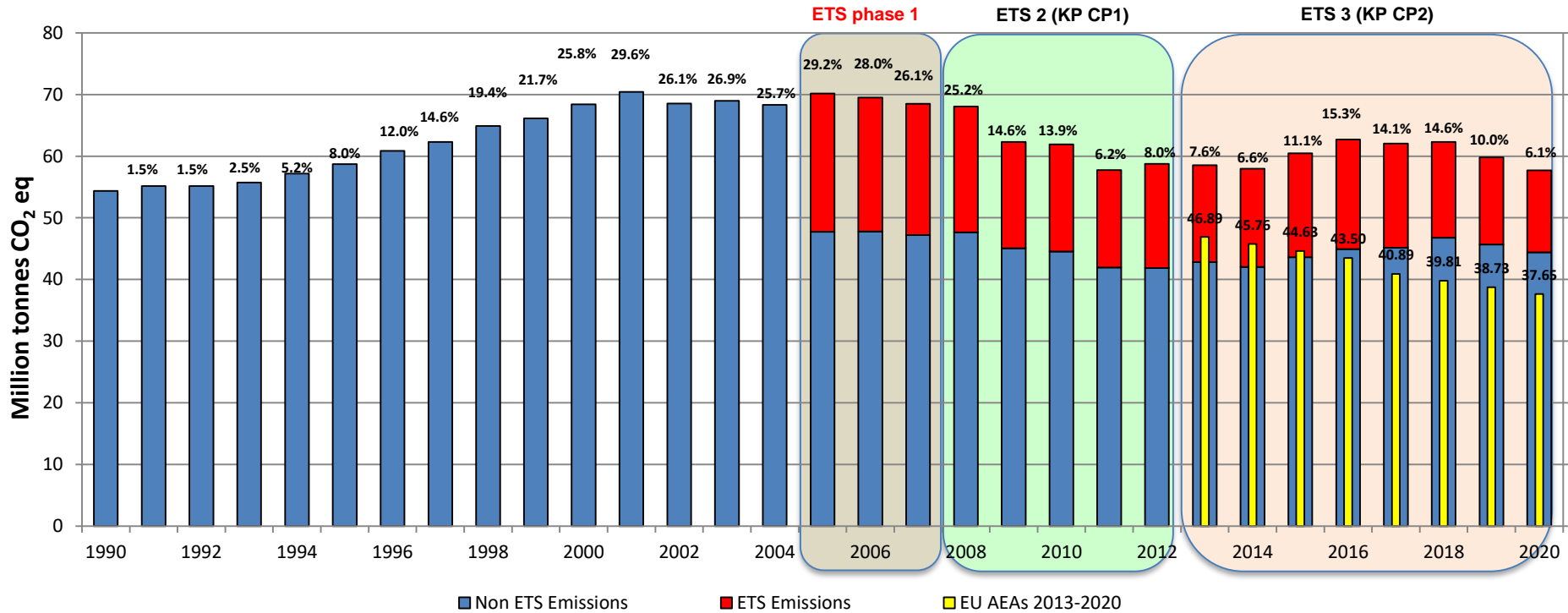
Population and per capita emissions



Emissions per capita (2019 comparison)

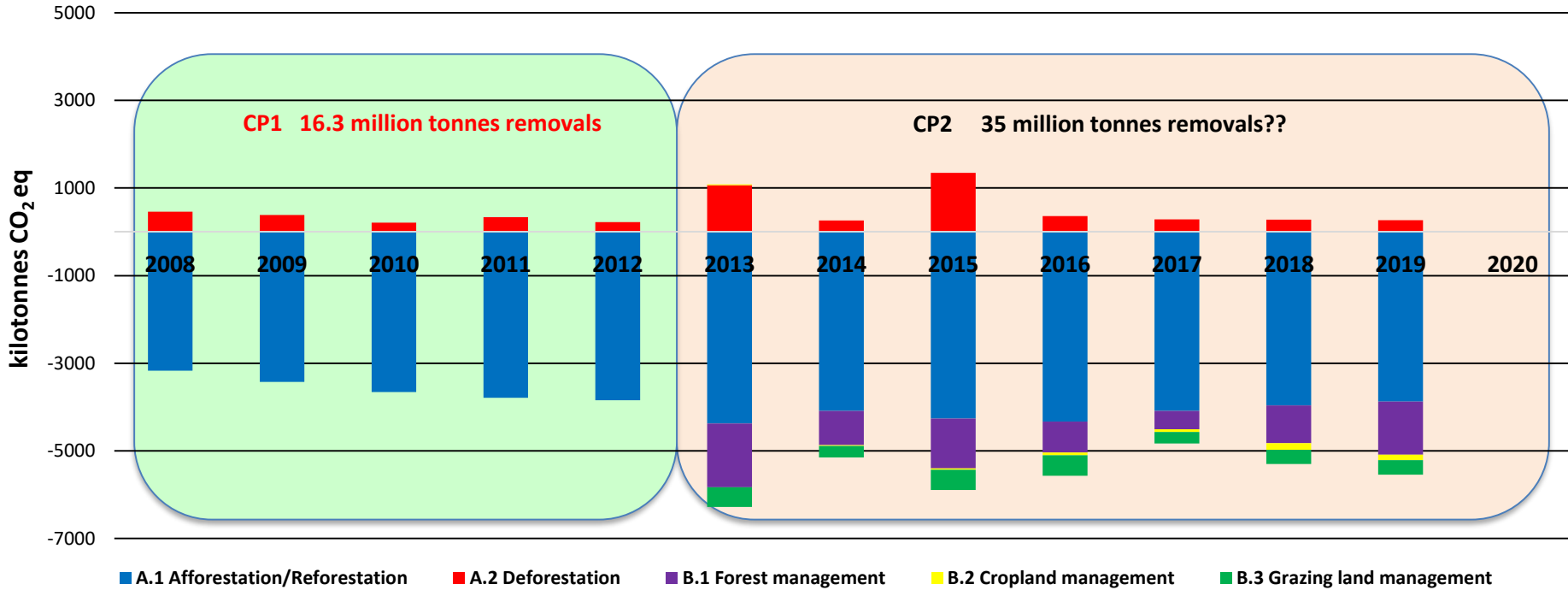


National emissions 1990-2020

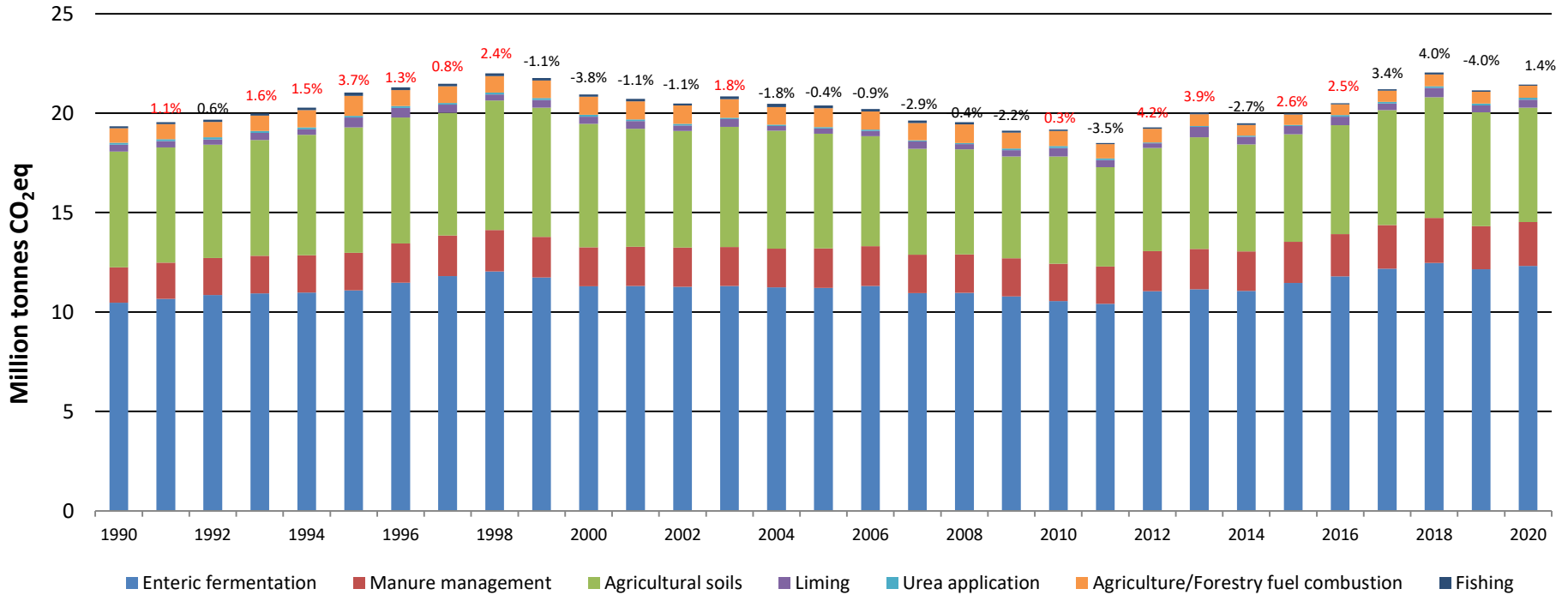


KP-LULUCF CP1 2008-2012

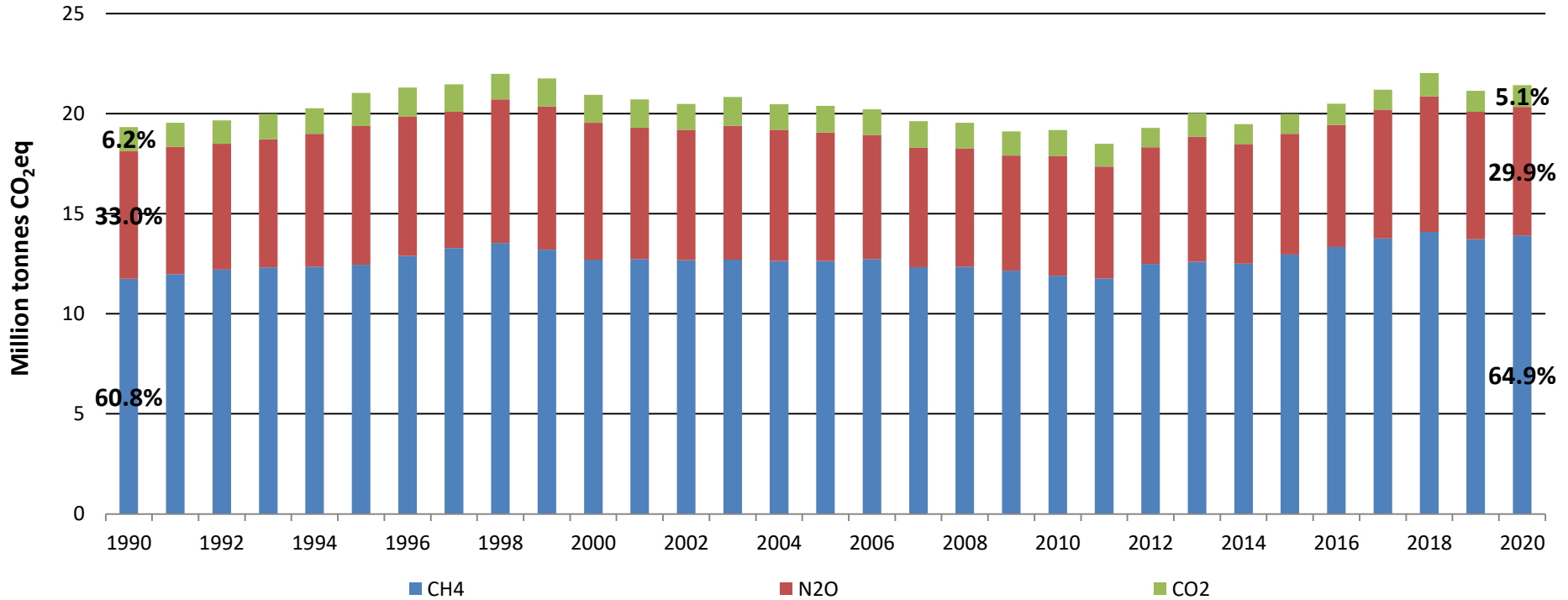
CP2 2013-2020



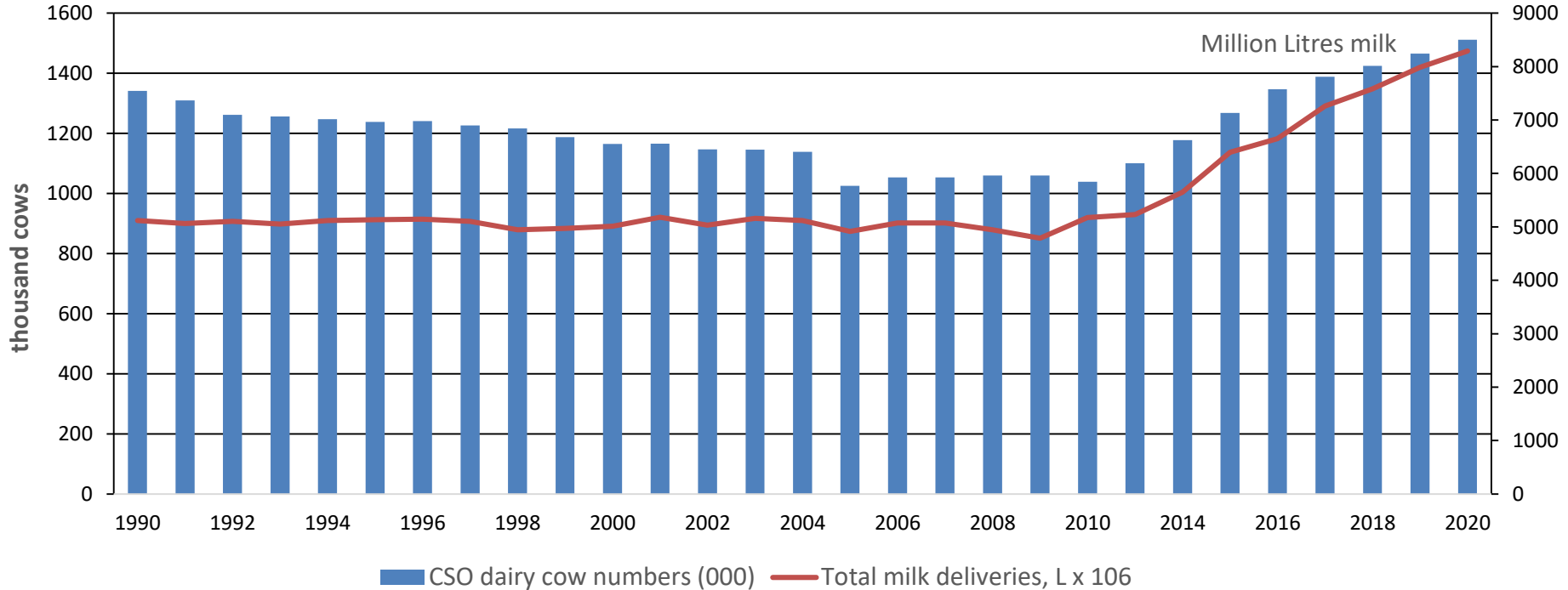
Agriculture 1990-2020



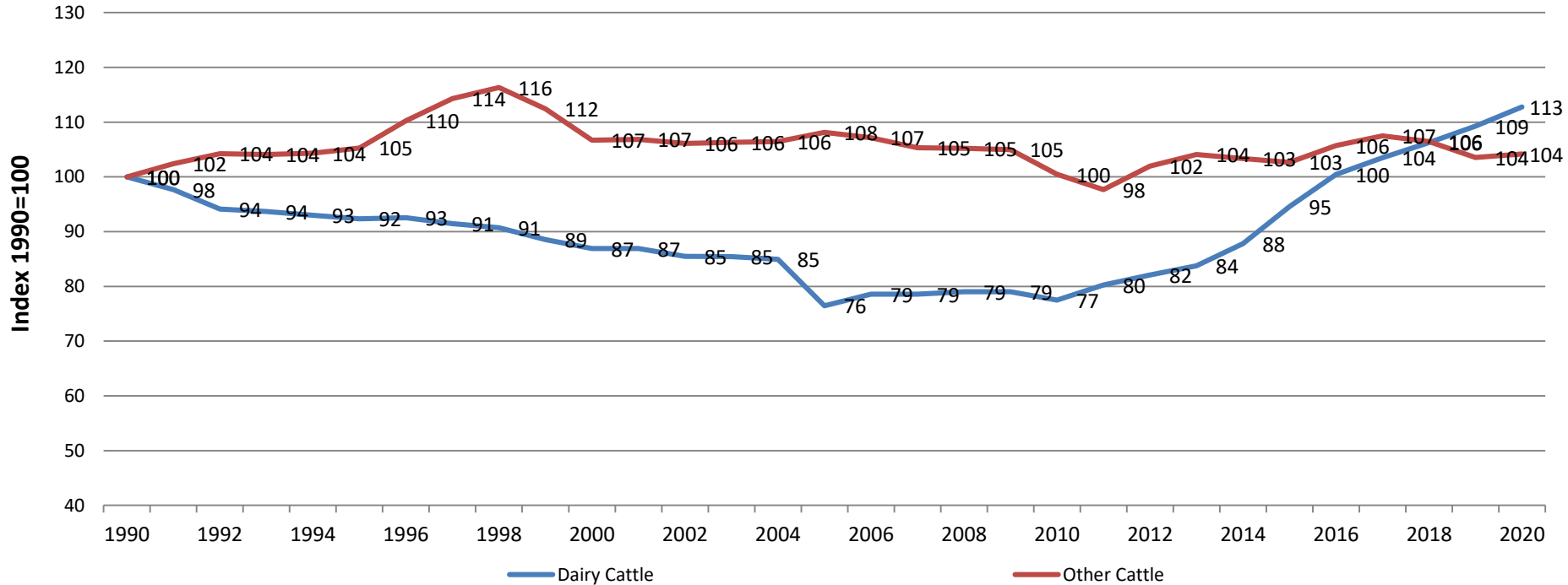
Agriculture 1990-2020



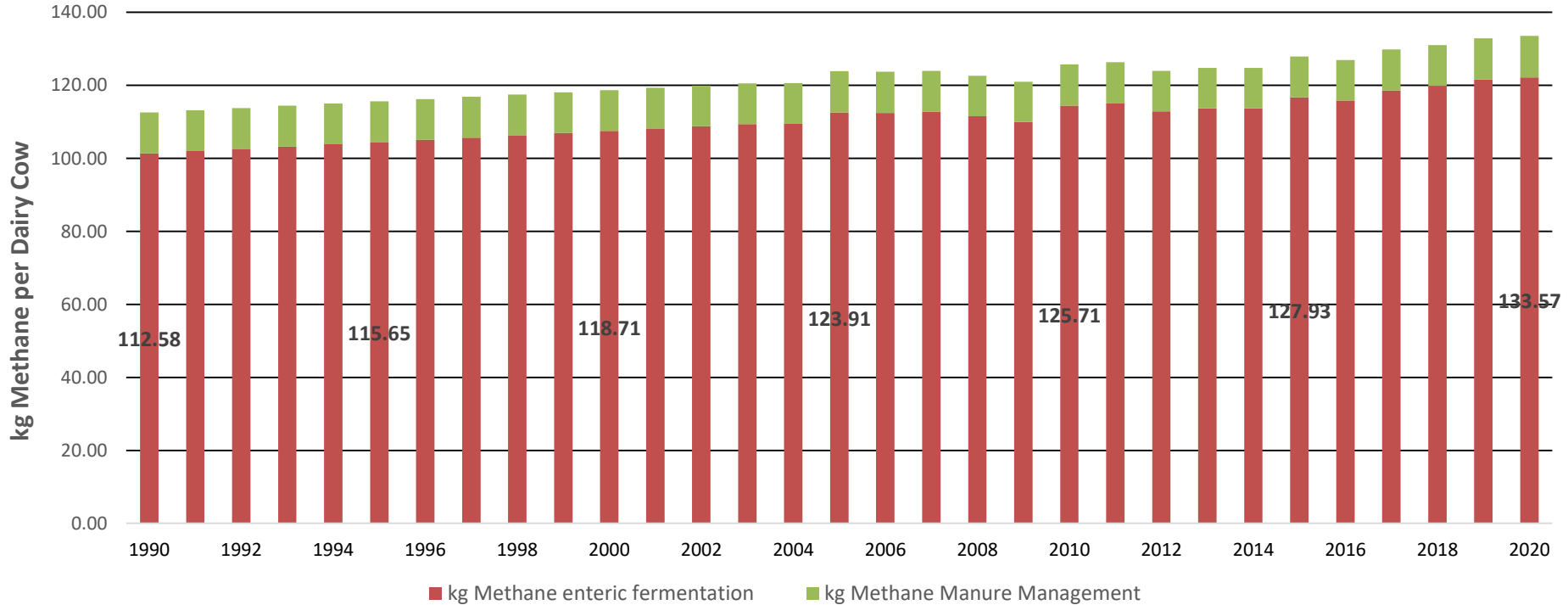
Agriculture emissions drivers



Agriculture emissions drivers



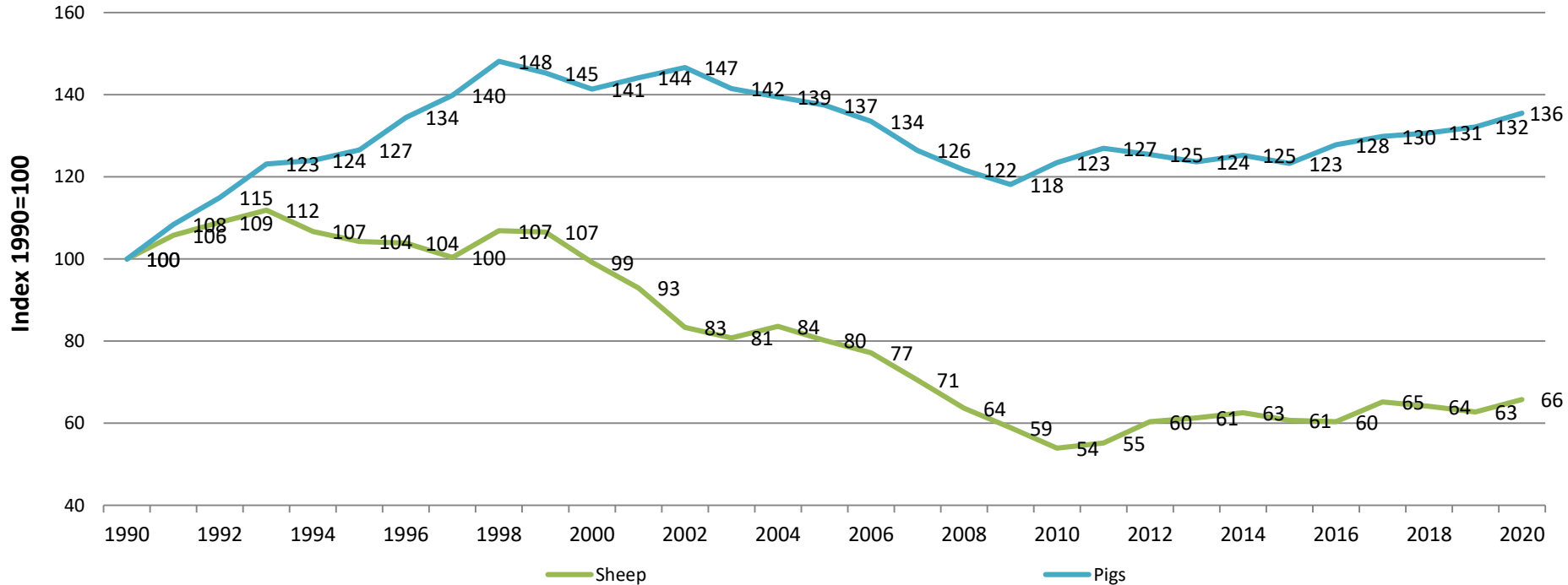
Agriculture emissions drivers



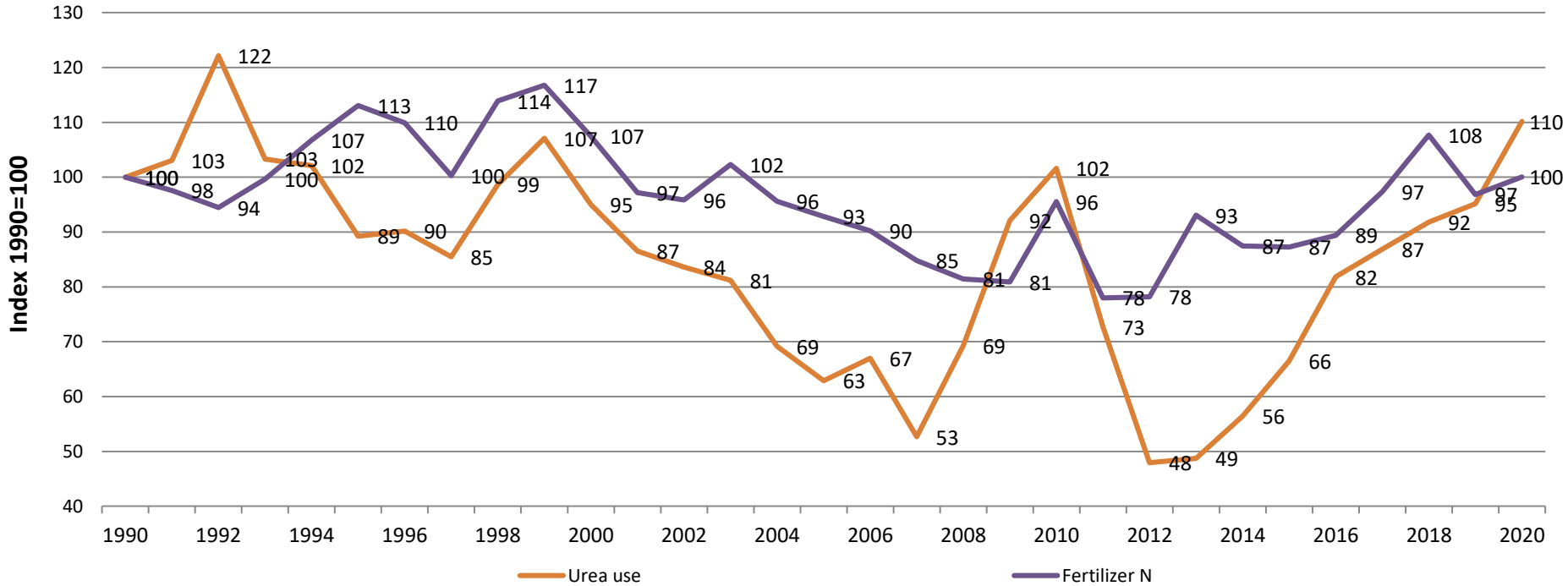
Agriculture emissions drivers



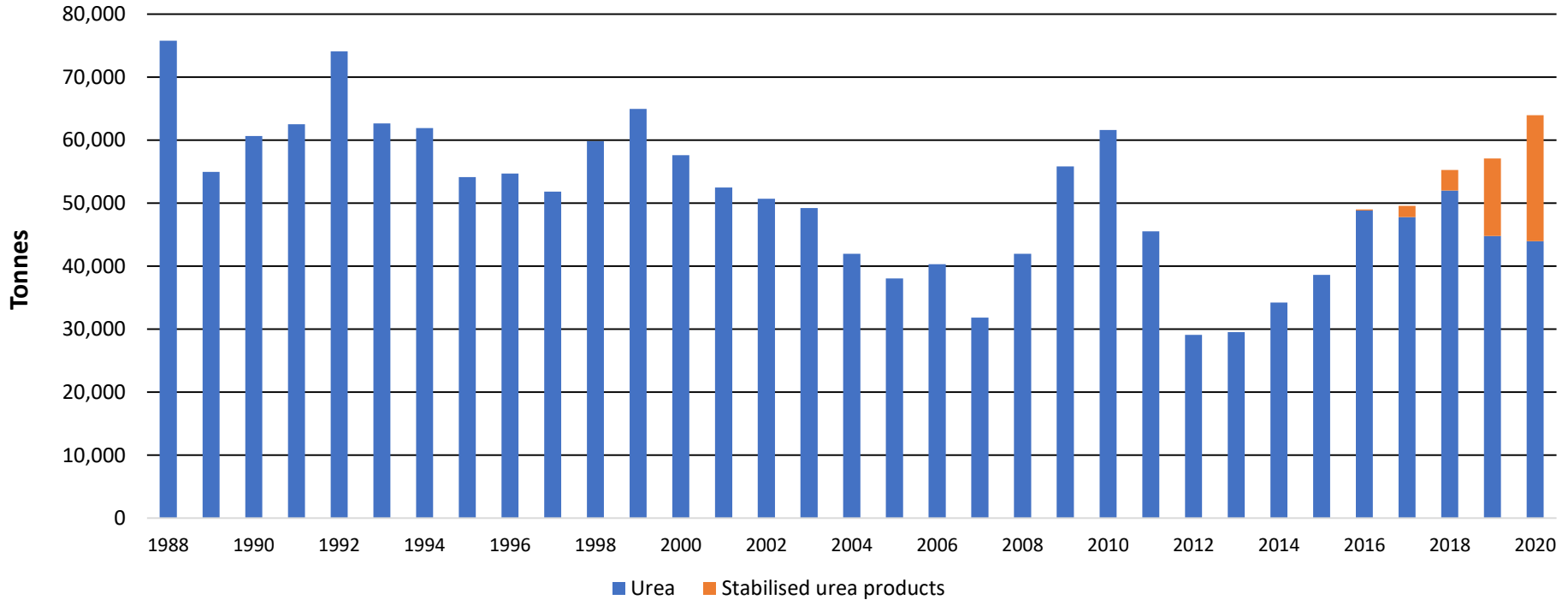
Agriculture emissions drivers



Agriculture emissions drivers



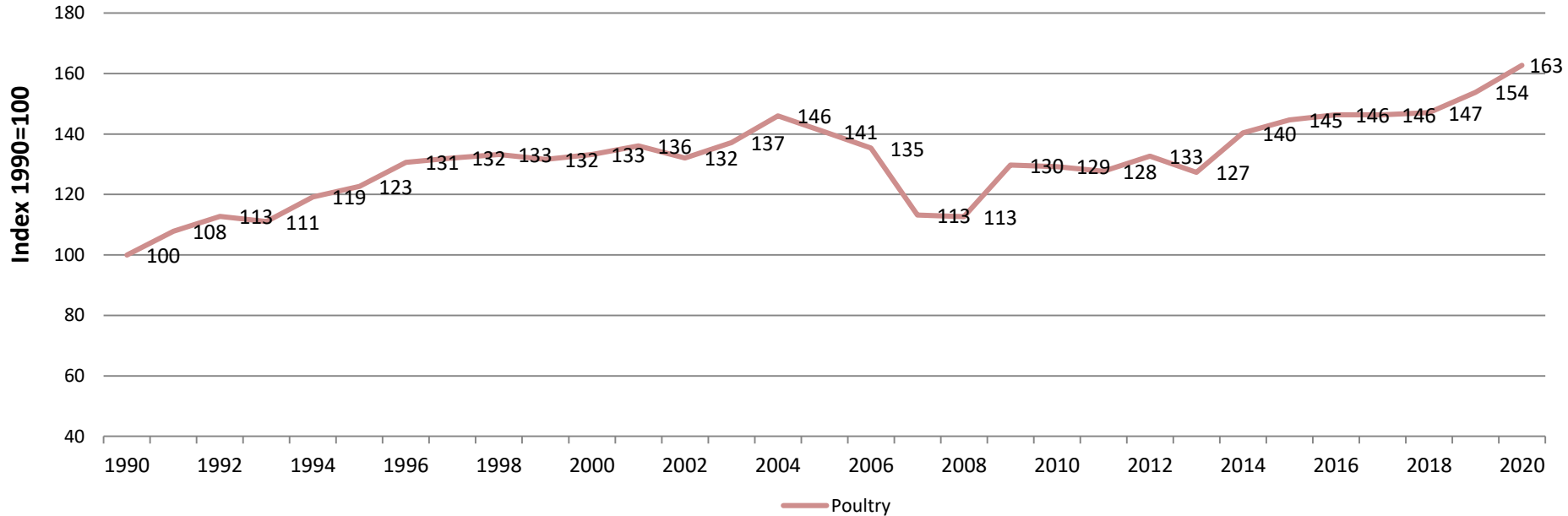
Urea trends 1988-2020



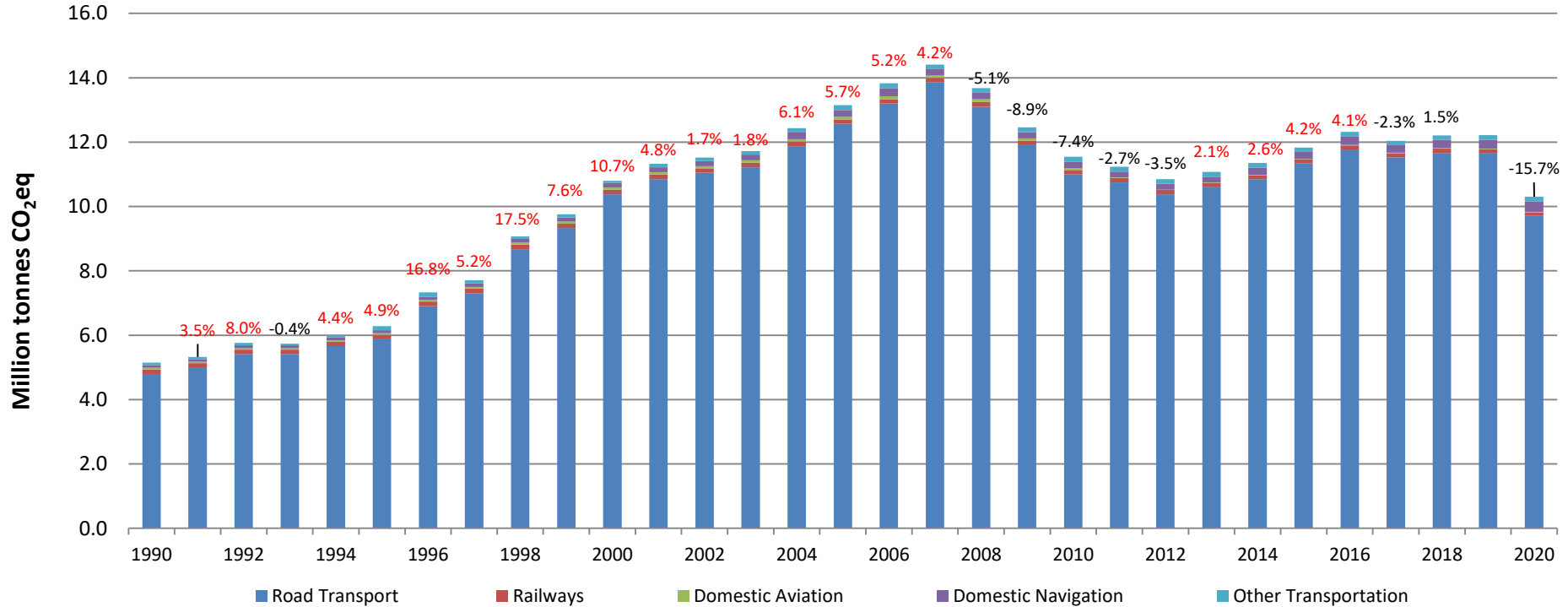
Agriculture emissions drivers



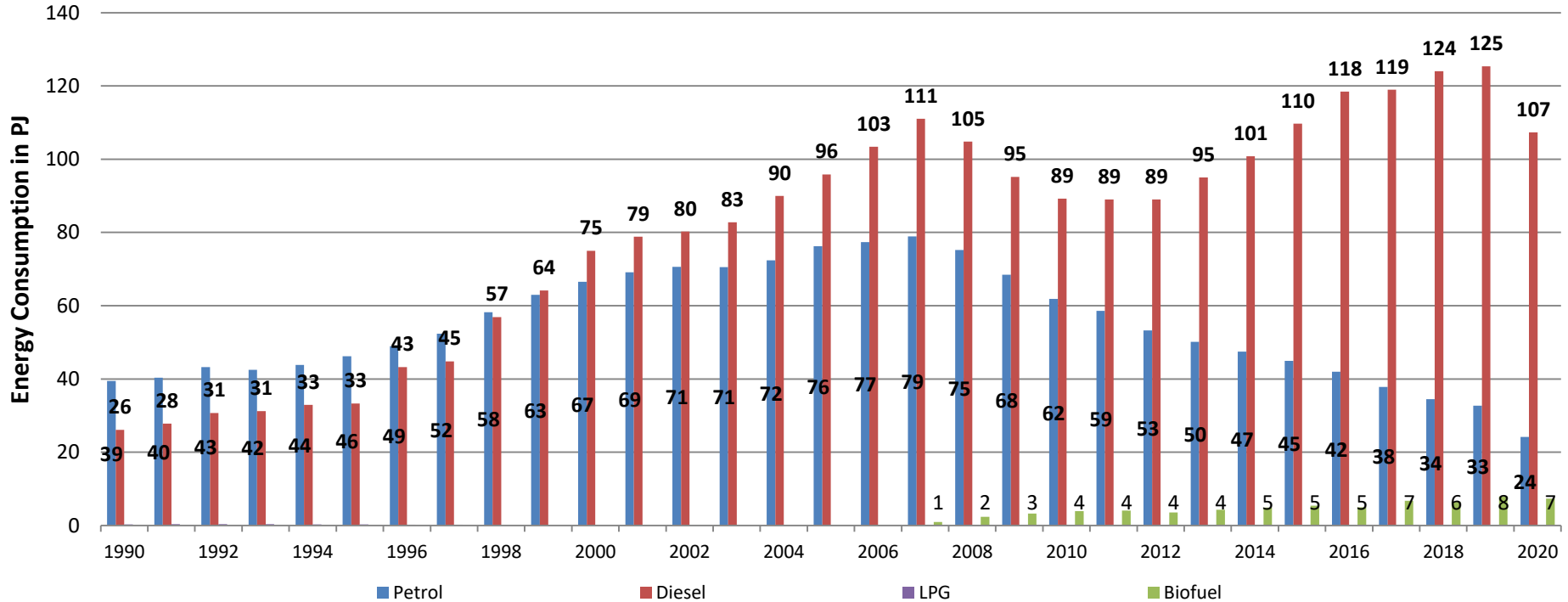
Poultry



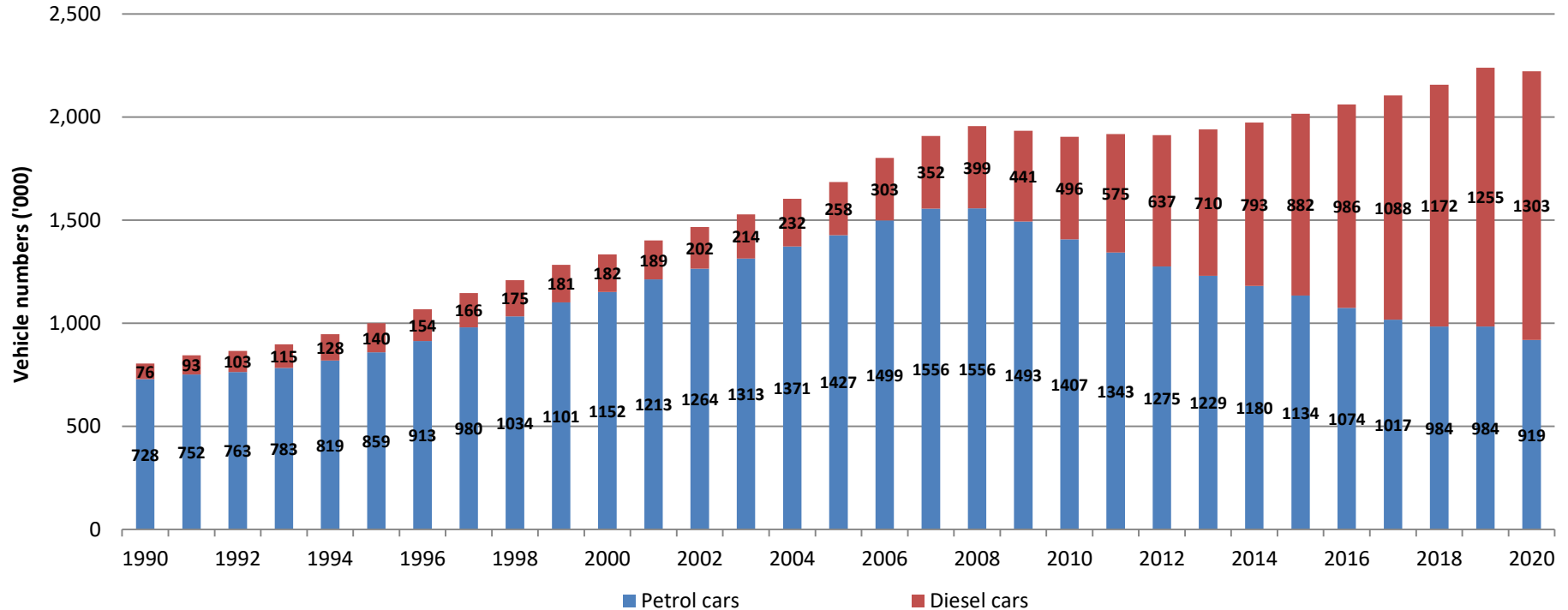
Transport



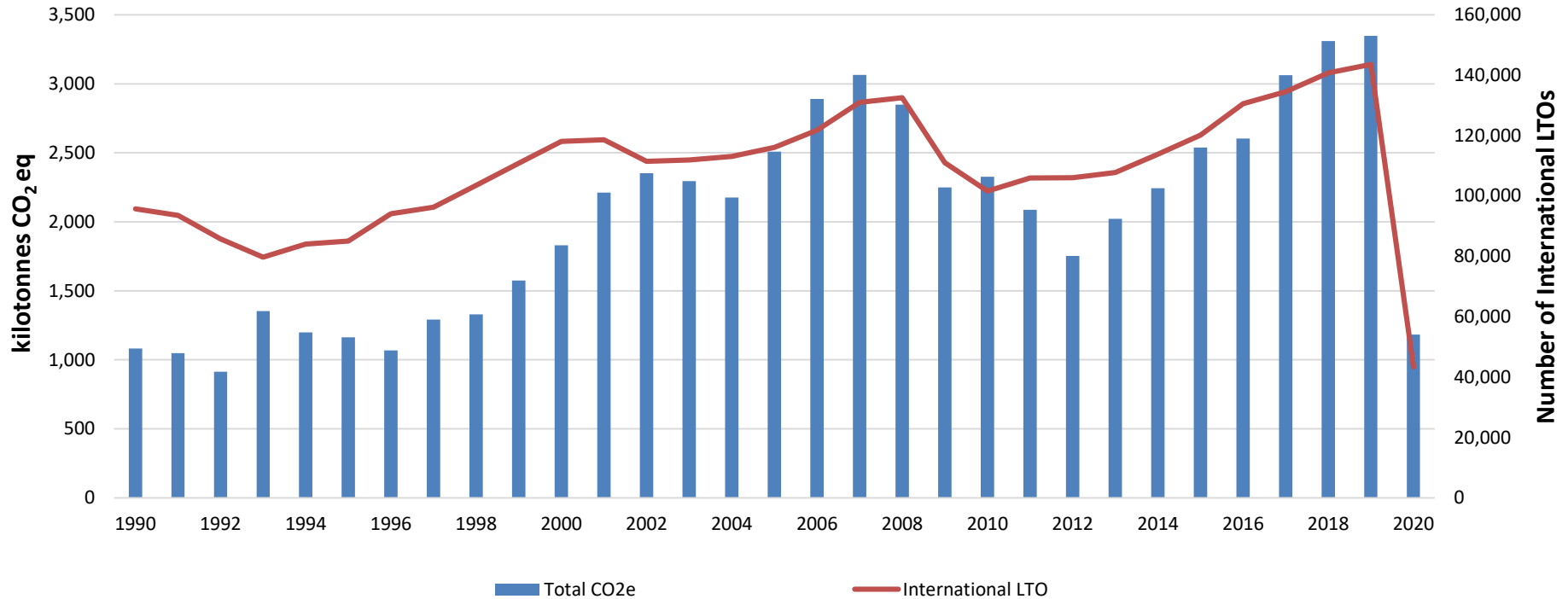
Transport emissions drivers



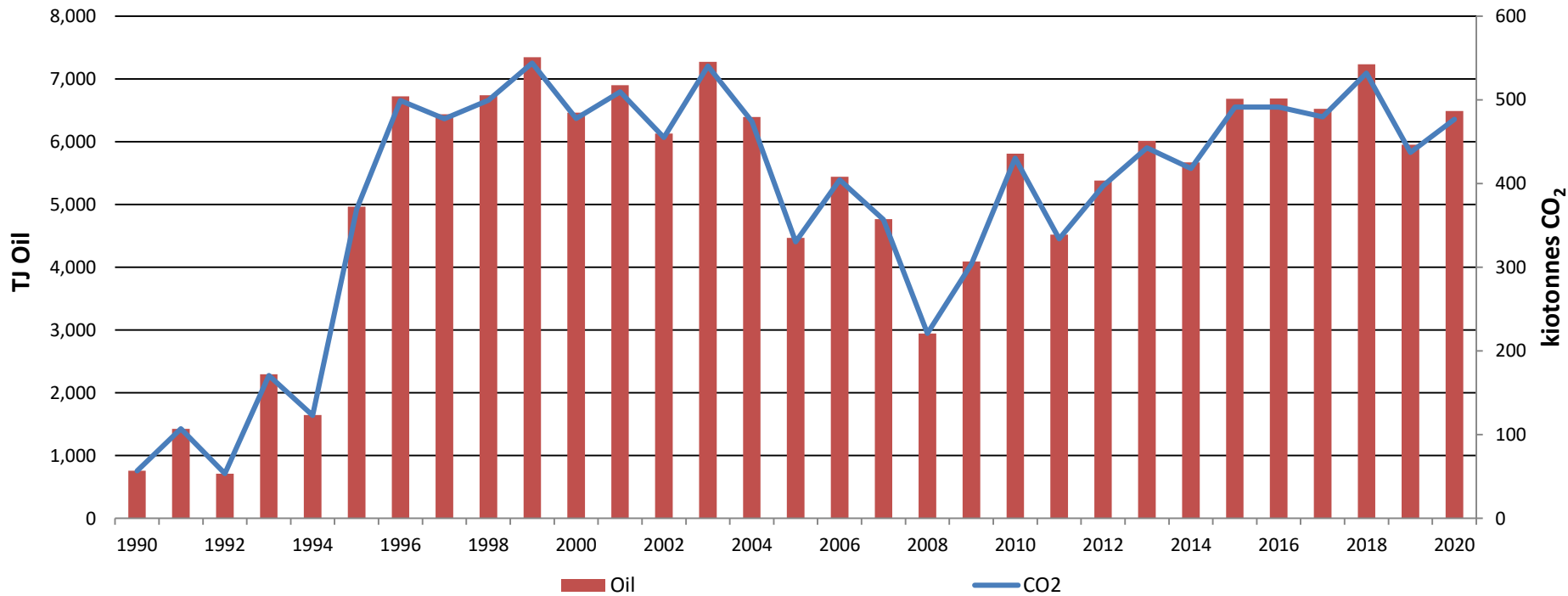
Transport emissions drivers



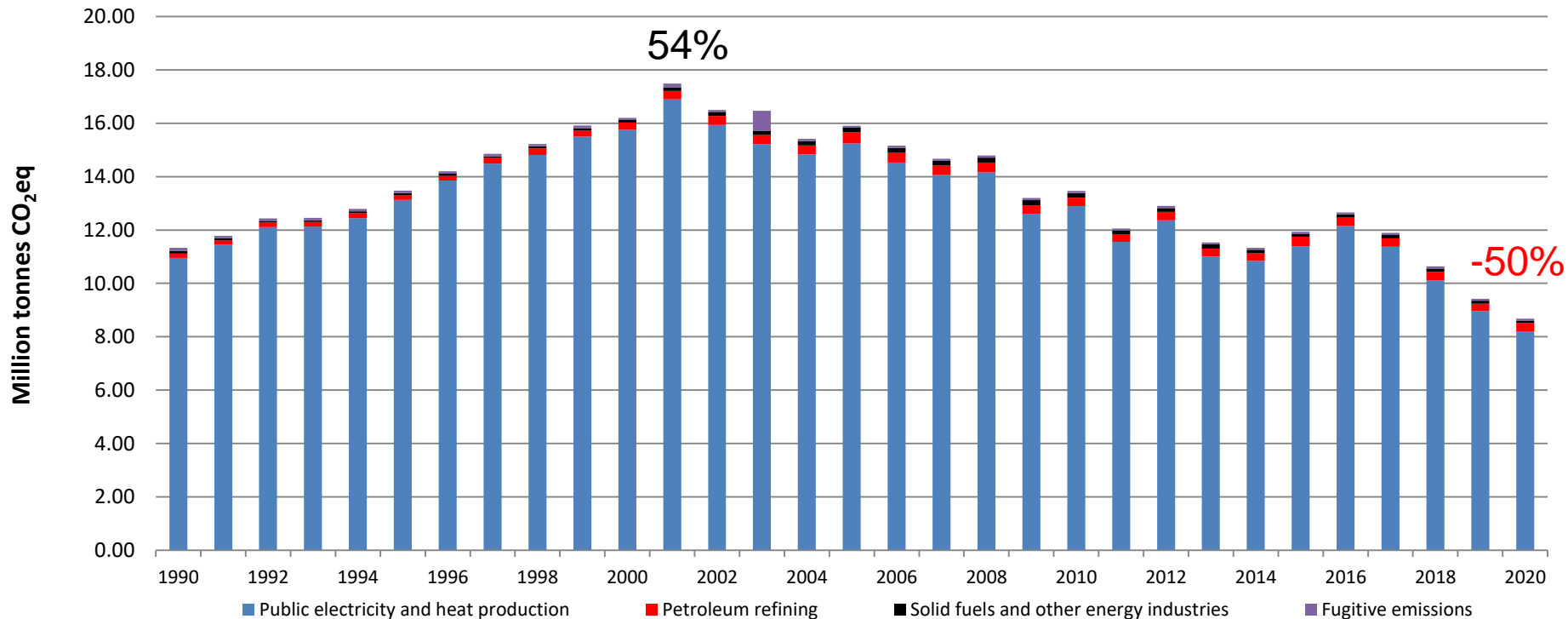
Transport (International Aviation)



International Bunkers (Navigation)

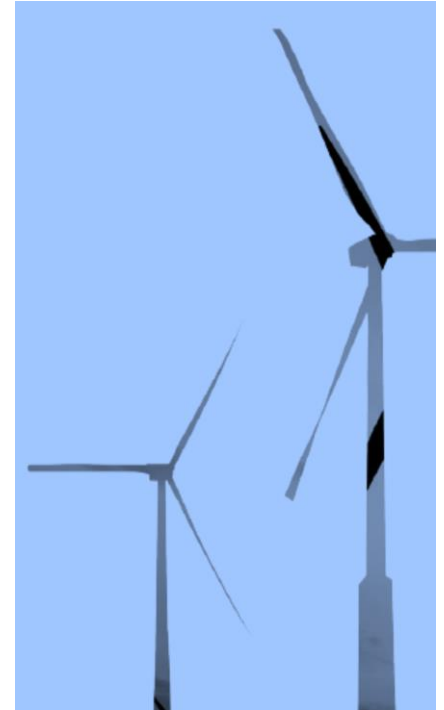
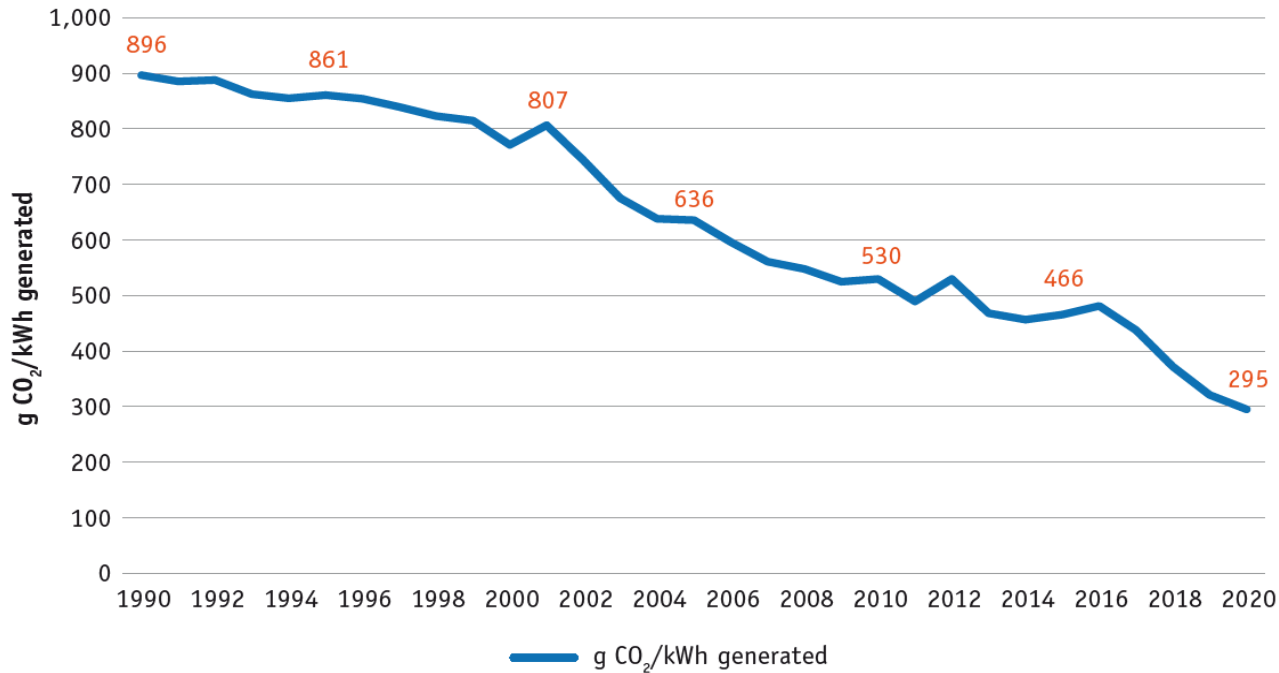


Energy Industries

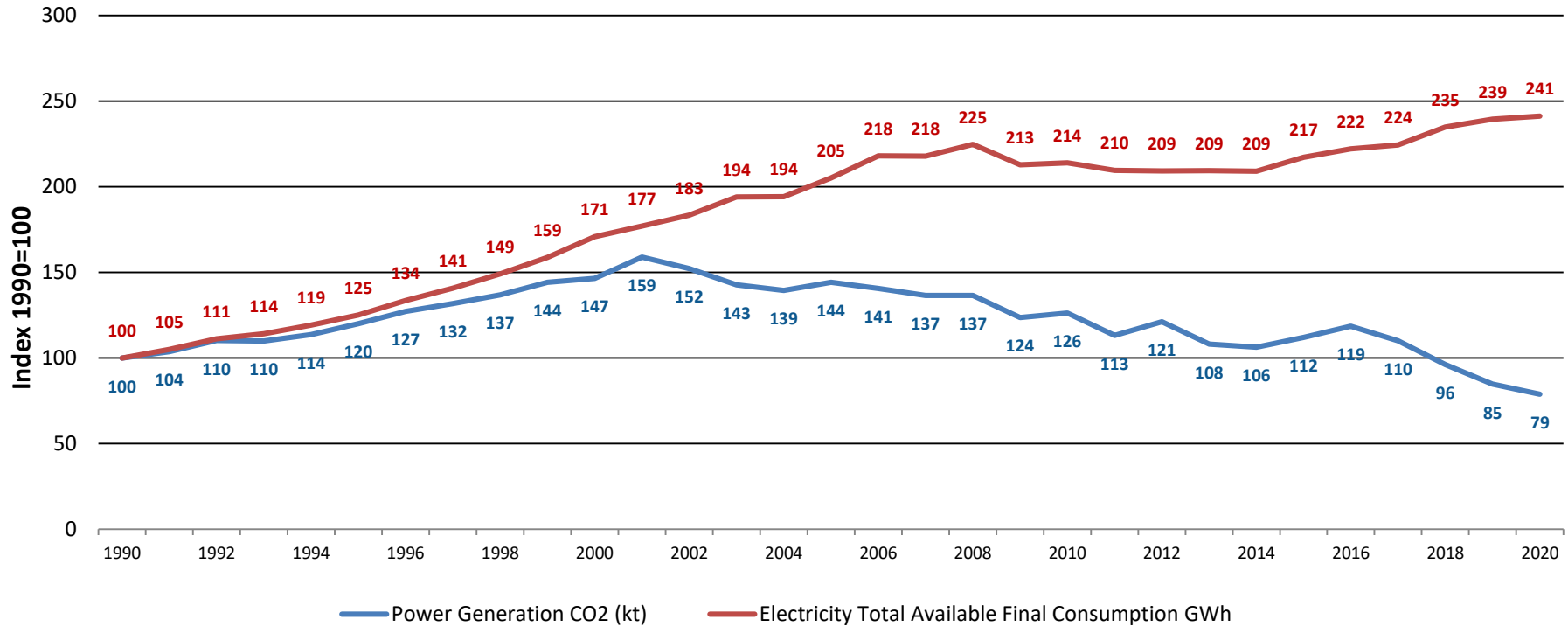


Overall emissions in 2020 are 23.3% below 1990 levels

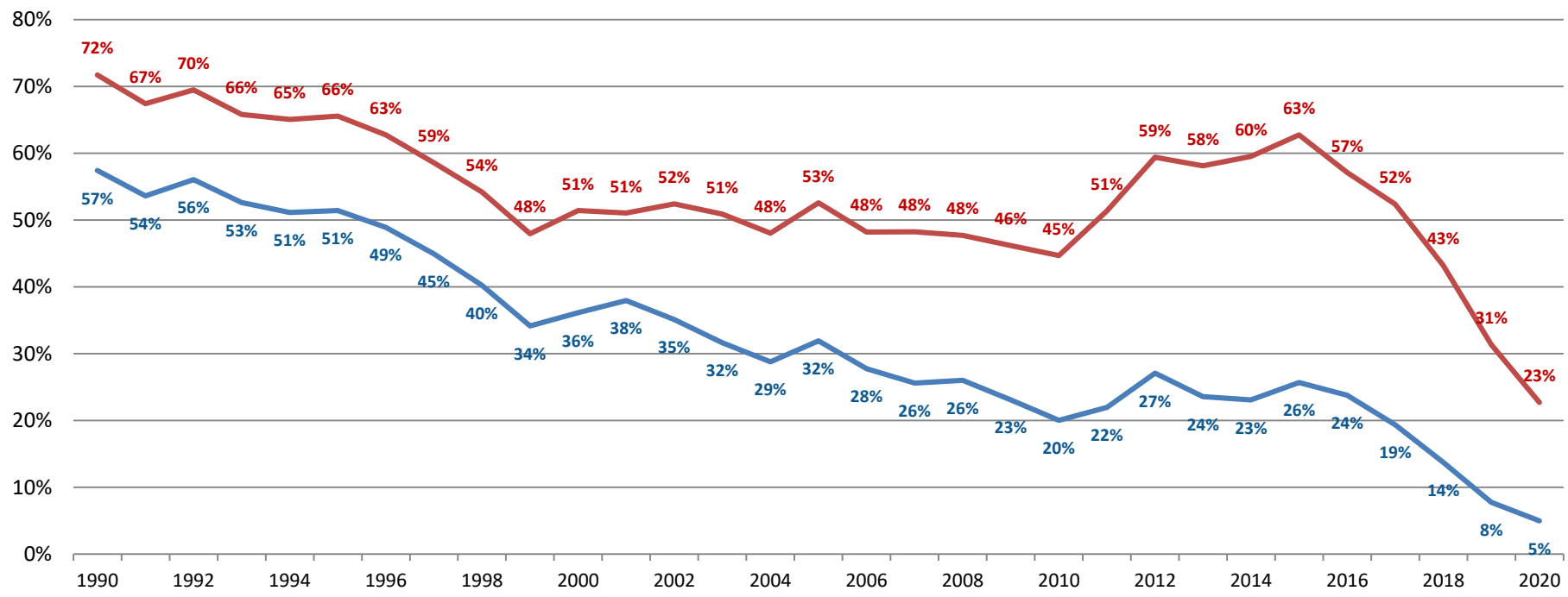
CO₂ Intensity of electricity generation



Electricity generation CO₂ and electricity consumption (relative trend)

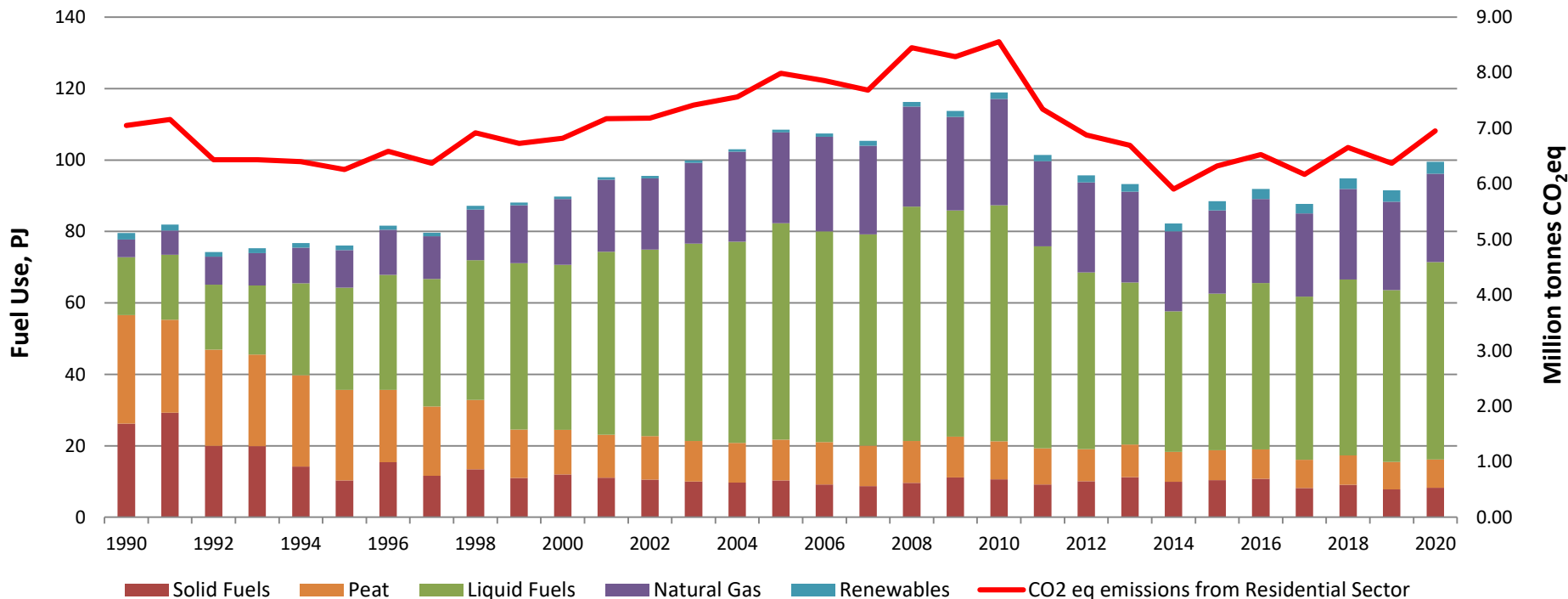


Electricity generation (Coal and Peat) CO₂

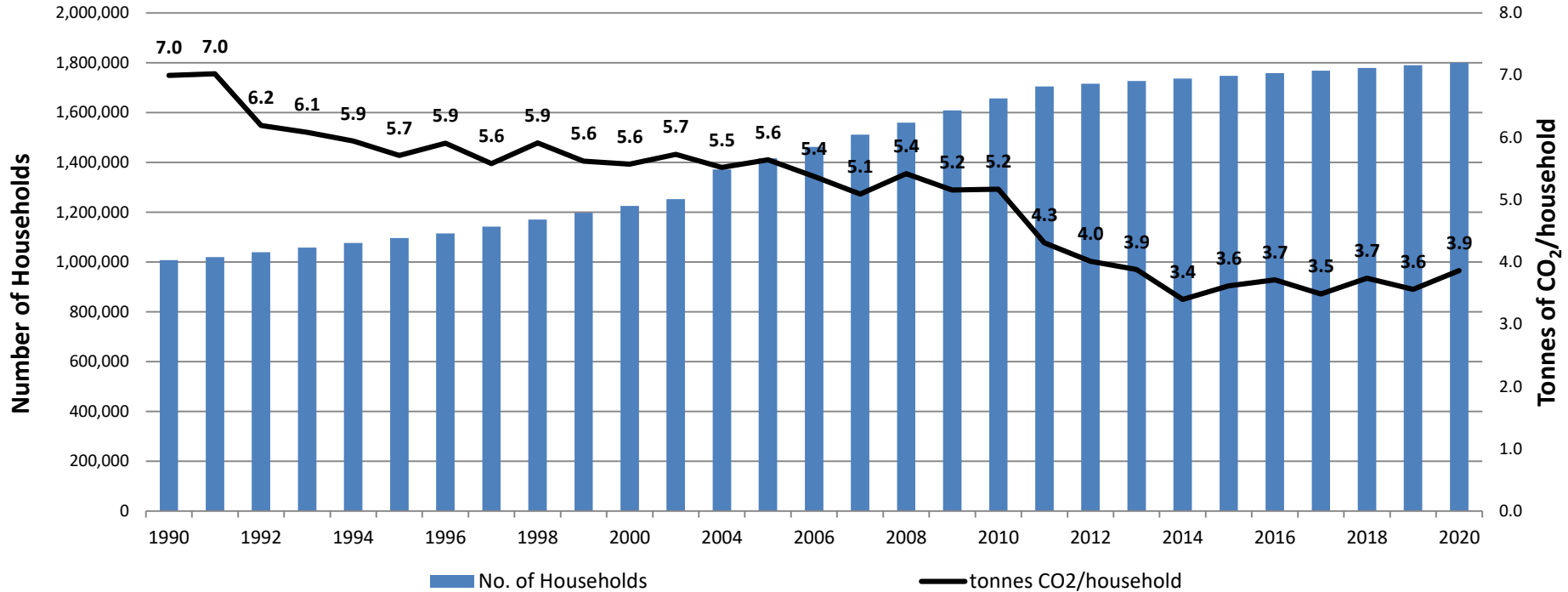


— Share of CO2 emissions — Share of Electricity generated

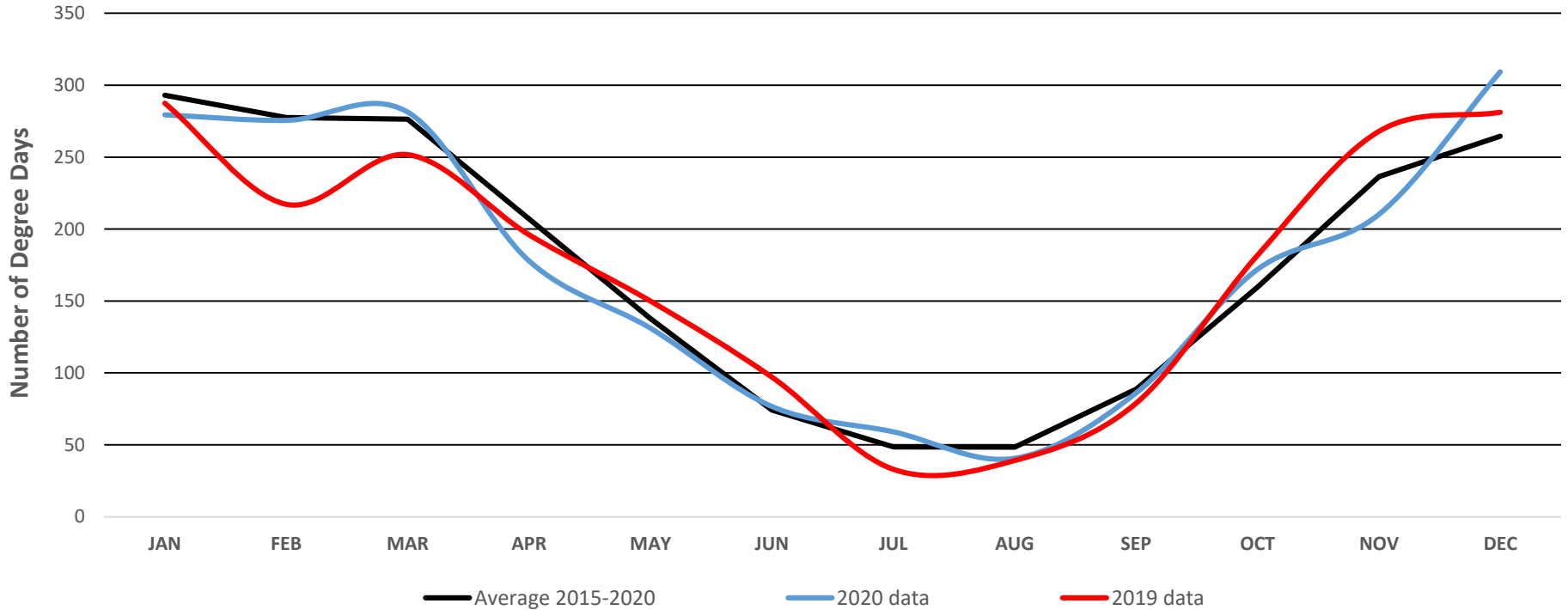
Residential



Residential emissions drivers



Weather and heating requirement



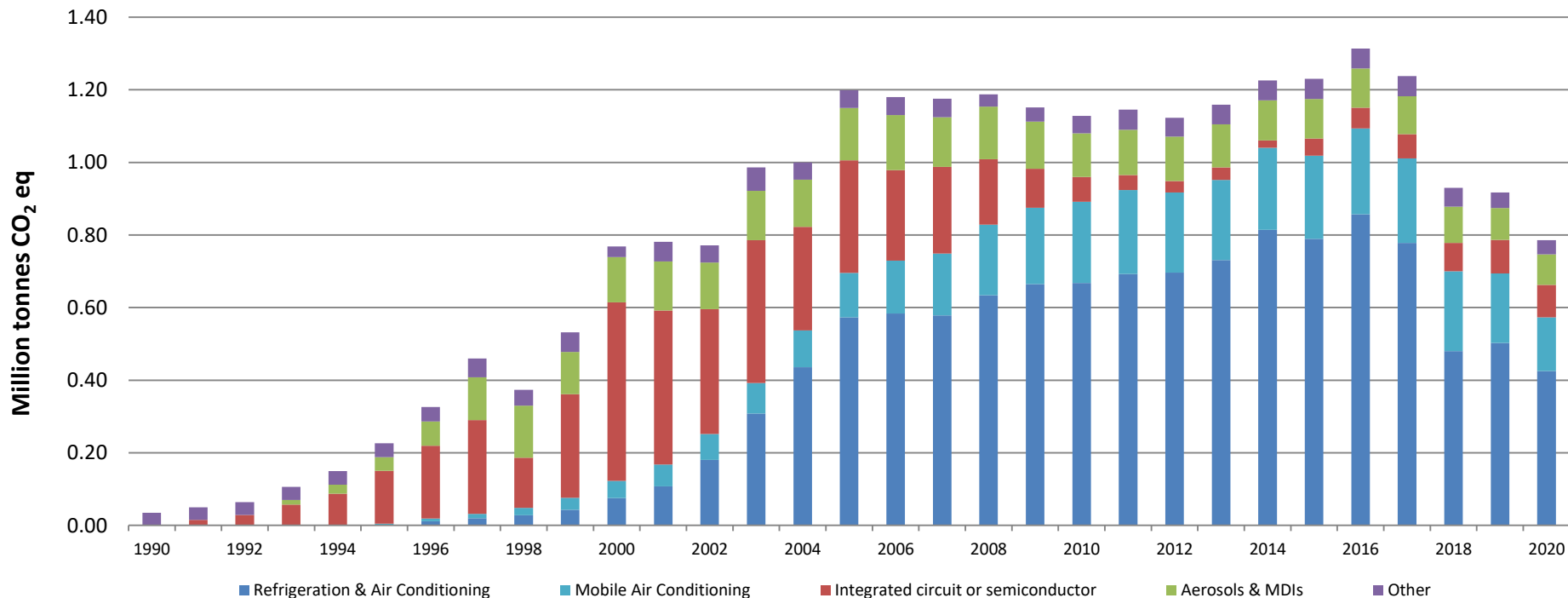
Source: Met Éireann

Remaining Sectors

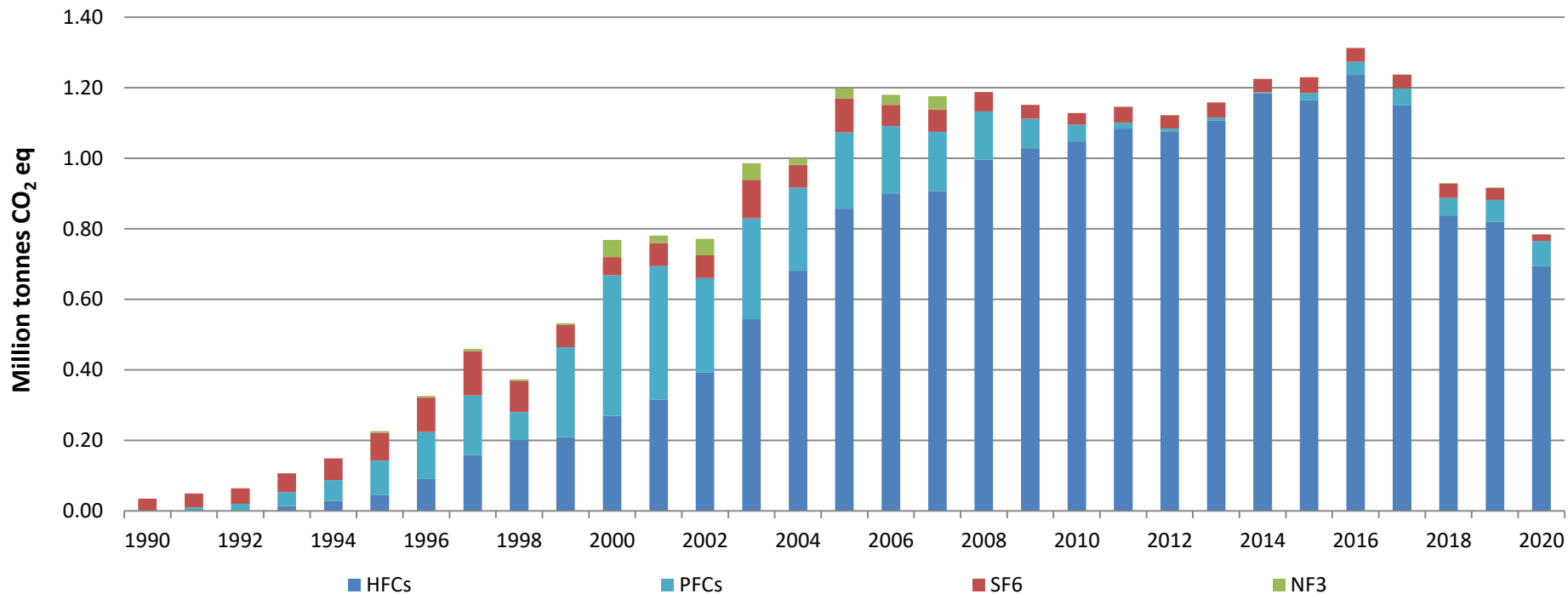


- Emissions from the **Manufacturing Combustion** sector decreased by 1.5% or 0.07 Mt CO₂eq in 2020
- Emissions from the **Industrial Processes** sector decreased by 7.0% (0.16 Mt CO₂eq) in 2020 due to a reduction in cement production with extended closures (COVID)
- Emissions from the **Waste sector** decreased by 0.8% in 2020 or 0.01 Mt CO₂eq.
- **F-Gas** emissions were down 14.4% from 2019 to 2020. This is driven by a reduction in refrigeration and air conditioning emissions.
- Emissions from **Commercial Services** sector decreased by 0.3% and **Public Services** sector emissions increased by 1.0% in 2020.

F-Gases emissions



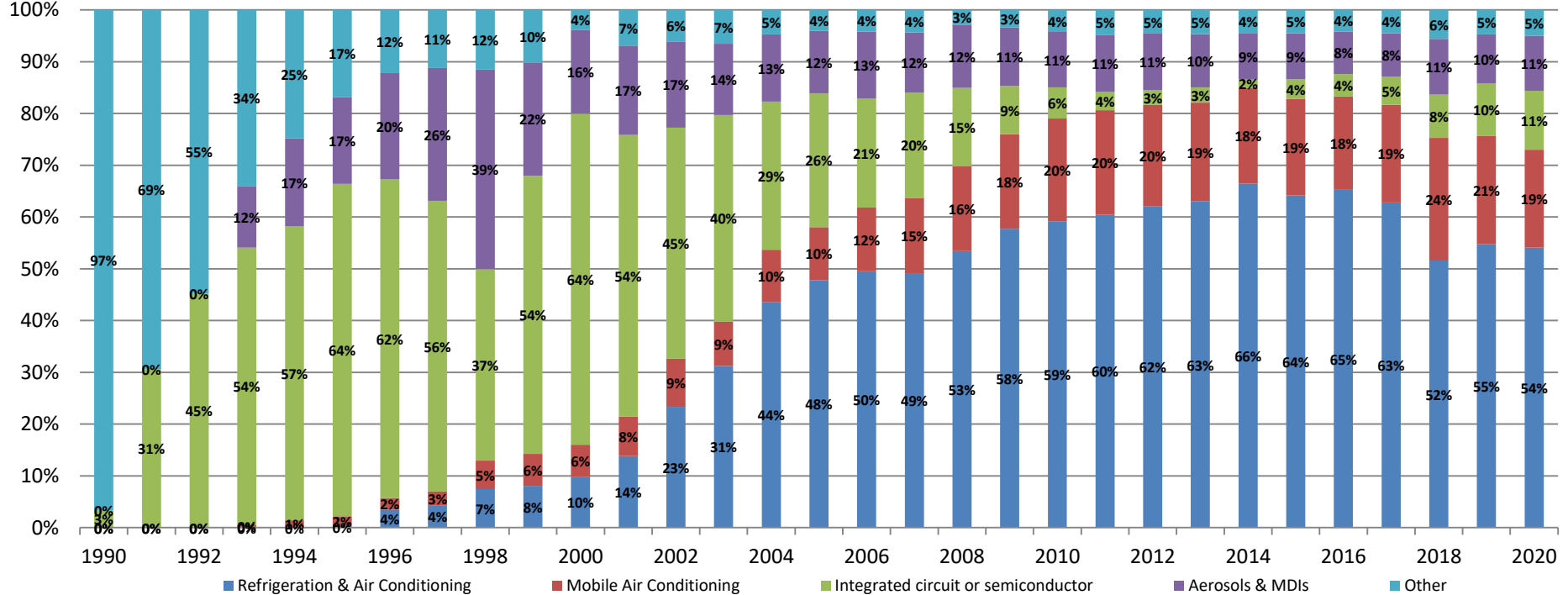
F-Gases drivers



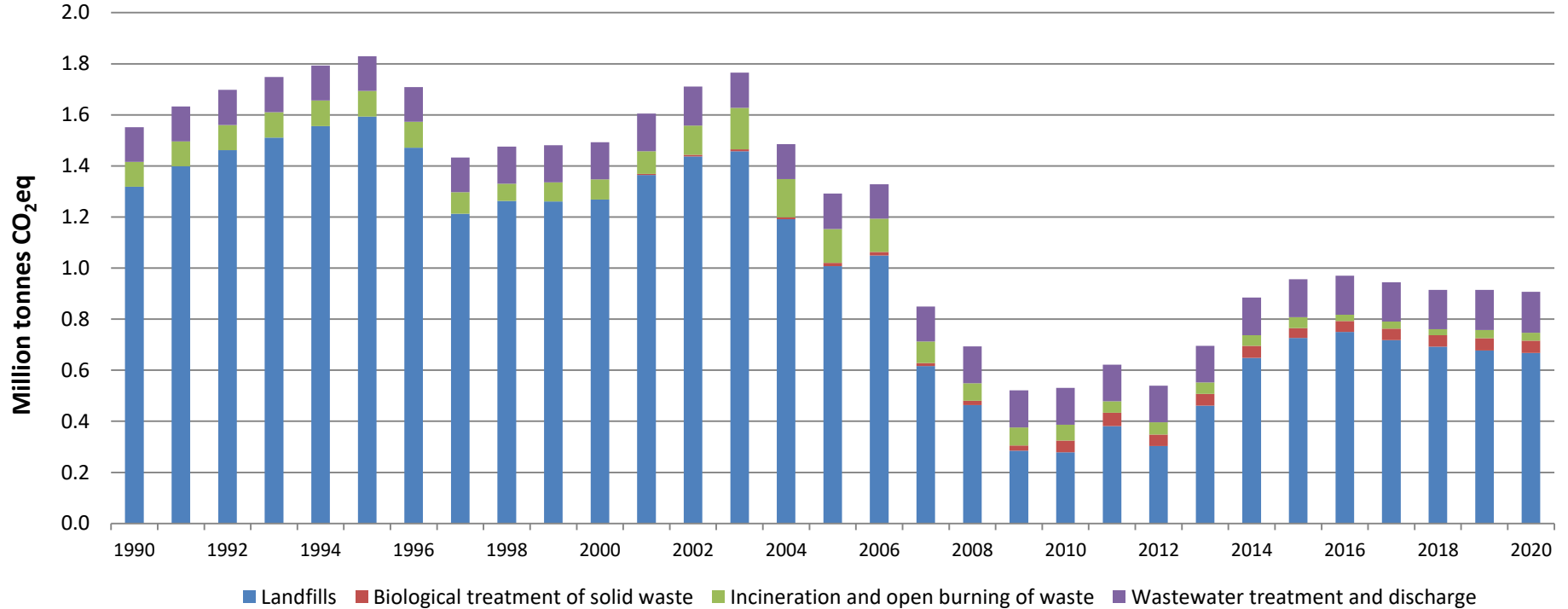
F-Gases drivers



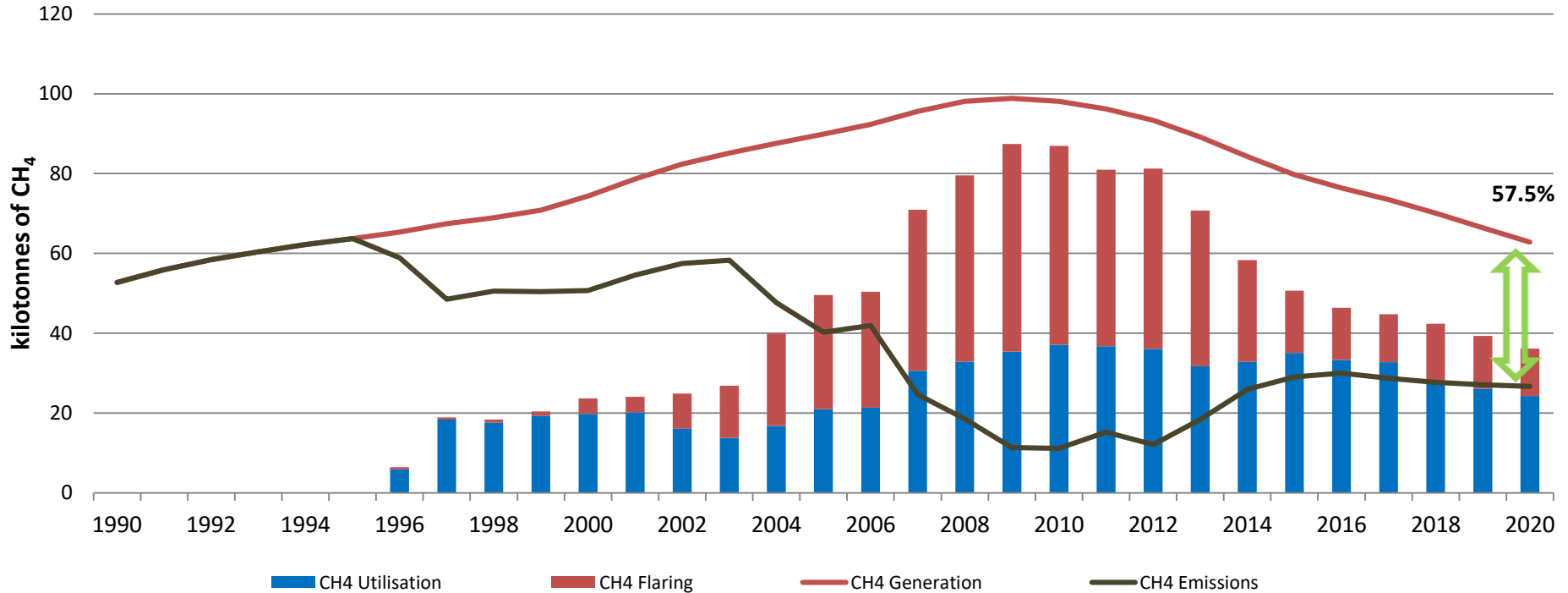
Rialtas na hÉireann
Government of Ireland



Waste emissions



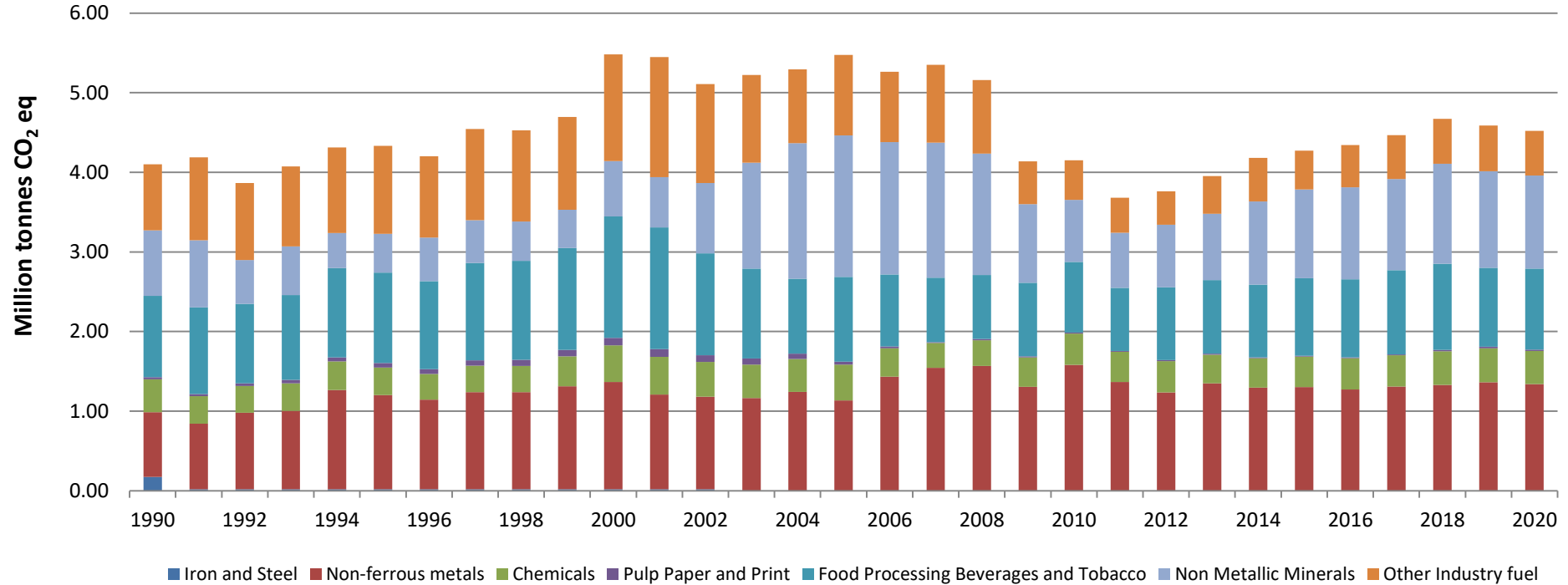
Waste drivers- landfills



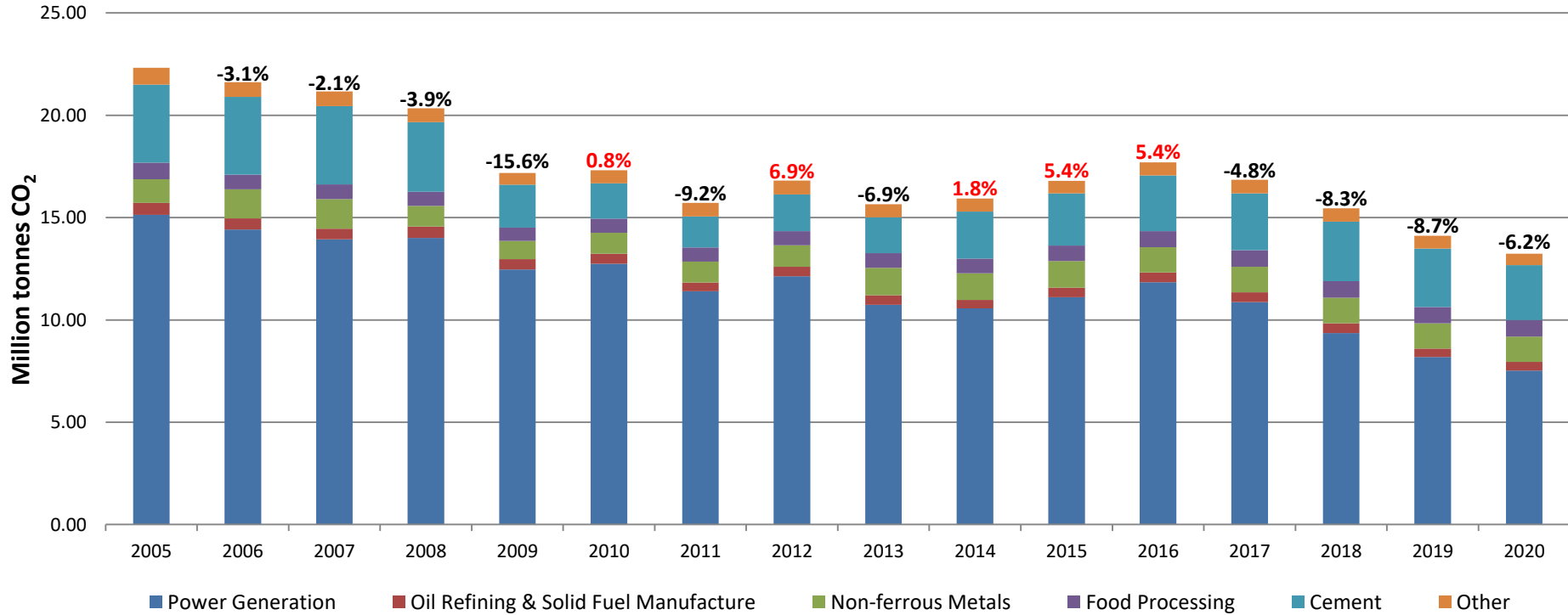
Manufacturing combustion emissions



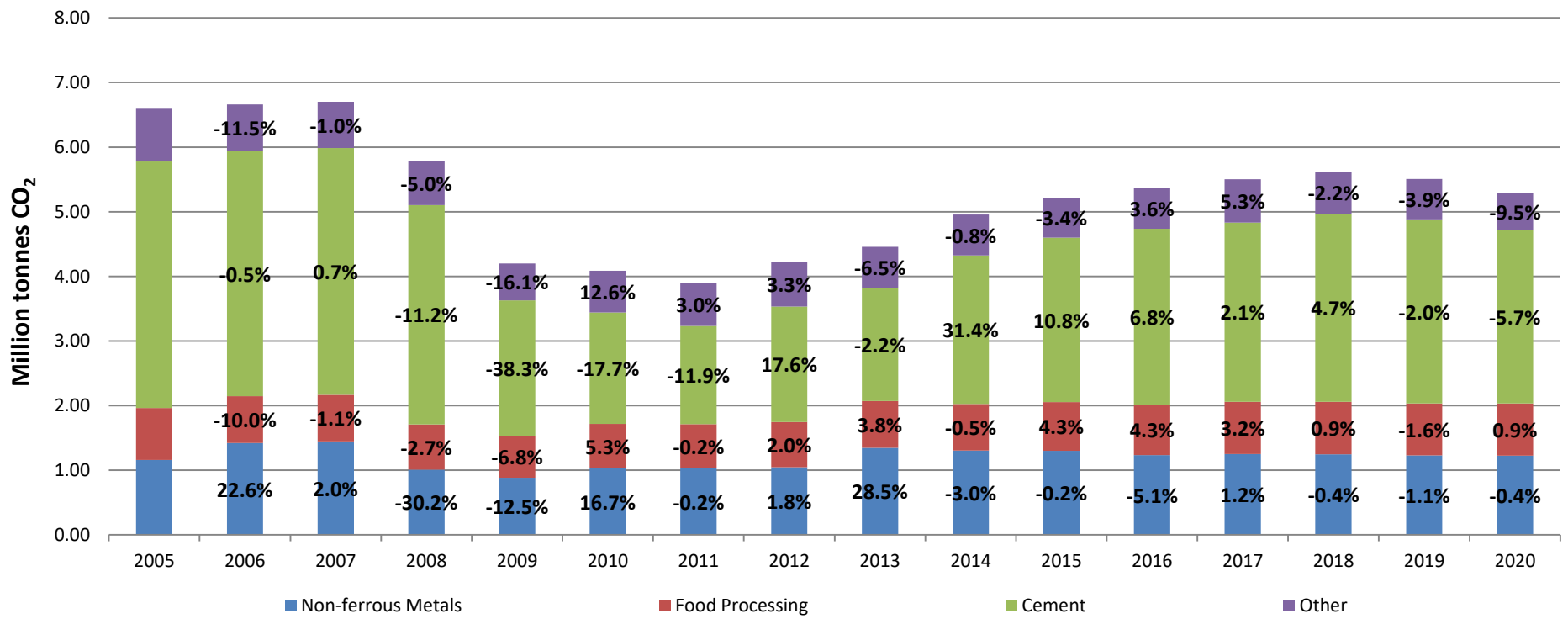
Rialtas na hÉireann
Government of Ireland



ETS CO₂ emissions 2005-2020



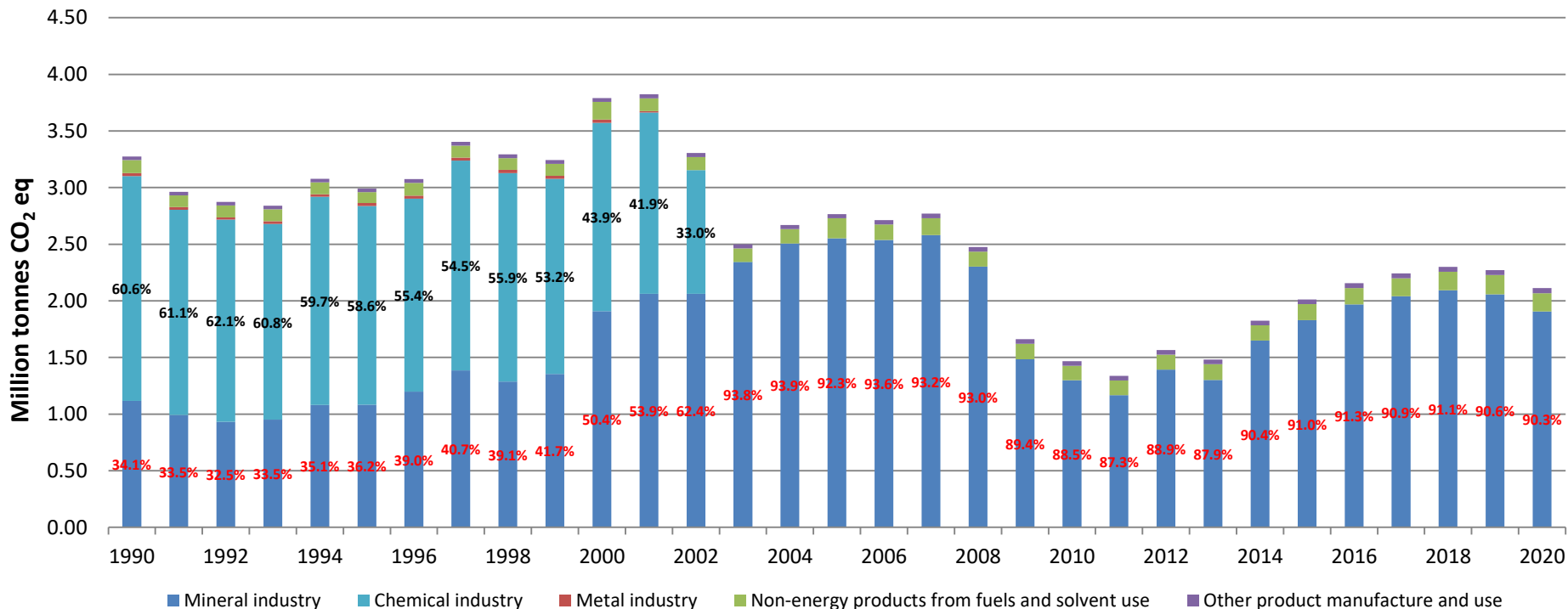
ETS Industry CO₂ emissions 2005-2020



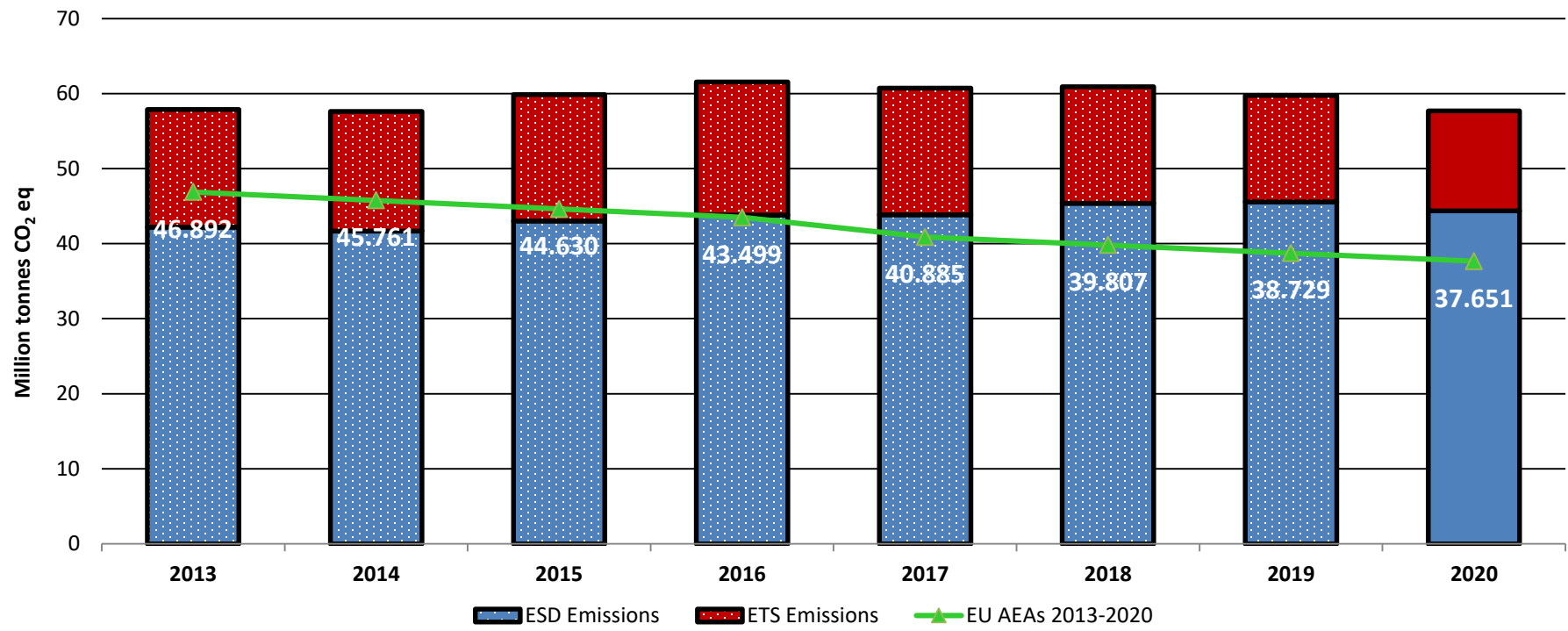
Industrial Processes emissions



Rialtas
na hÉireann
Government
of Ireland



Compliance (Effort Sharing Decision)



Compliance ESD Table



	2013	2014	2015	2016	2017	2018	2019	2020
A Total greenhouse gas emissions without LULUCF	57,903	57,626	59,878	61,546	60,744	60,912	59,777	57,699
B NF ₃ emissions	1	1	1	1	1	1	1	1
C Total greenhouse gas emissions without LULUCF and without NF ₃ emissions	57,903	57,625	59,877	61,545	60,743	60,911	59,776	57,697
D Total verified emissions from stationary installations under Directive 2003/87/EC	15,686	15,953	16,830	17,737	16,896	15,515	14,179	13,294
E CO ₂ emissions from 1.A.3.a. domestic aviation	10	9	10	10	17	17	18	18
F Total ESD emissions (= C-D-E)	42,207	41,663	43,037	43,798	43,829	45,379	45,579	44,385
G EU ESD Targets	46,892	45,761	44,630	43,499	40,885	39,807	38,729	37,651
Distance to target (= F-G)	-4,685	-4,098	-1,593	299	2,944	5,571	6,850	6,733

Greenhouse gas emissions and projections

Ireland must play its part in contributing to efforts to limit climate change. Ireland's national policy position establishes a low carbon vision for Ireland by 2050. Ireland is not on track in terms of its EU Effort Sharing 2020 target. Climate Action Plan measures will need to be swiftly implemented to meet Ireland's targets.

Search



Search for a licence or permit

The EPA's Role in addressing climate change

The EPA's role in addressing climate change challenges includes collating national greenhouse gas emissions and projections; regulating emissions from industrial sectors; supporting climate science research; supporting behavioural change and facilitating the National Dialogue on Climate Action.



What can you do?

Reduce your transport carbon footprint, improve the energy efficiency of your home and avoid food waste - a climate action you can do every day.

Remember:

"EVERY BIT OF WARMING MATTERS. EVERY YEAR MATTERS.**EVERY CHOICE MATTERS"**

Intergovernmental Panel on Climate Change



Learn more on
www.epa.ie/ghg.

Greenhouse Gas
EMISSIONSwww.epa.ie

© Environmental Protection Agency 2020

EmissionsStatistics@epa.ie