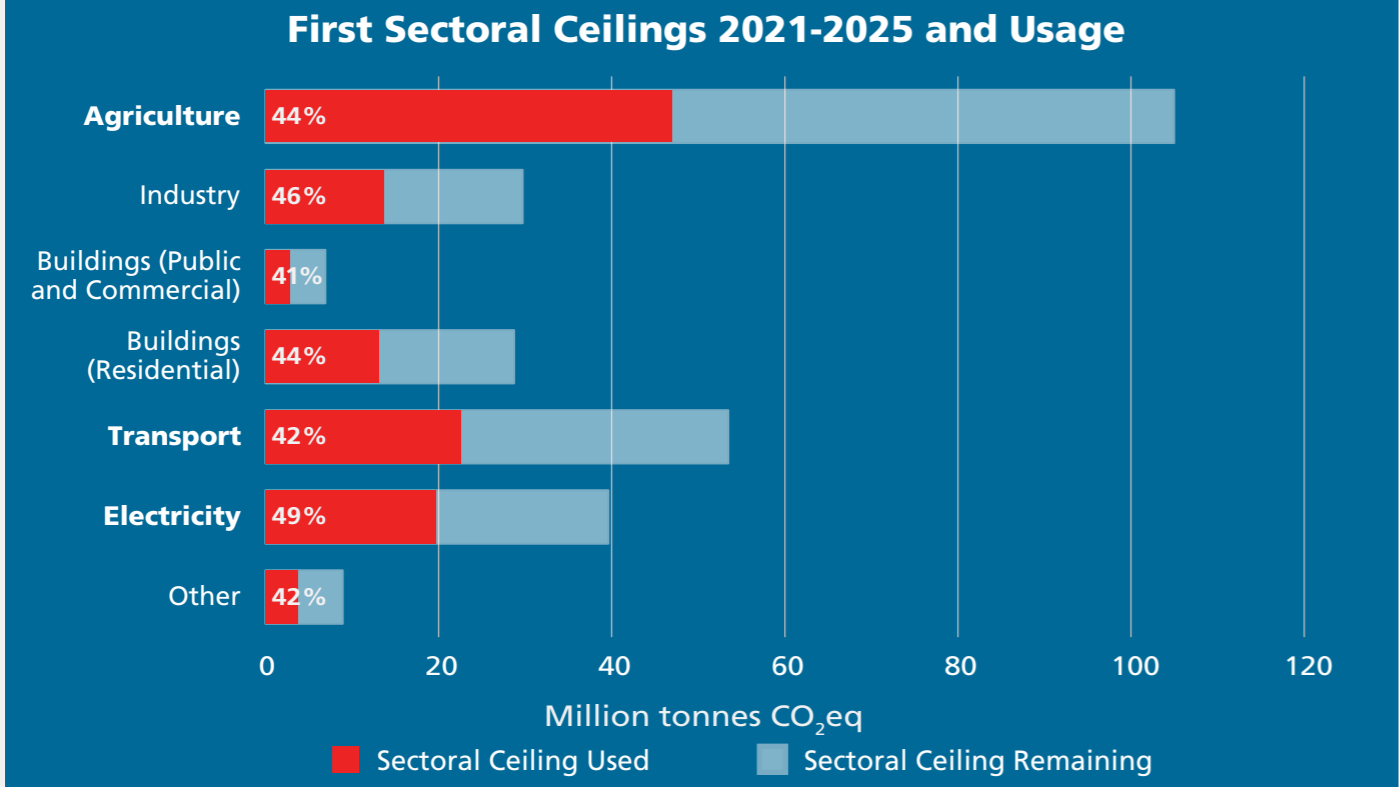
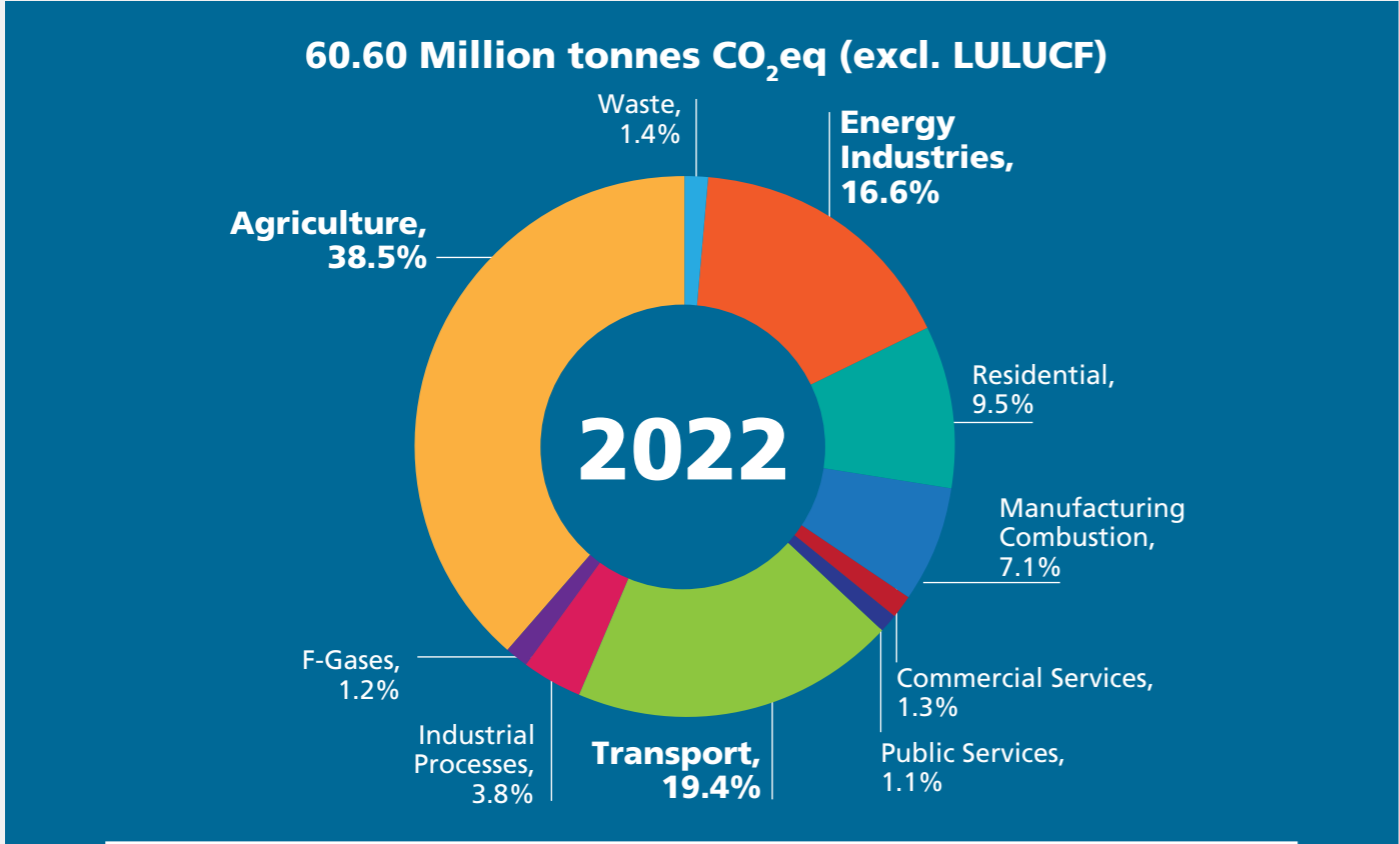
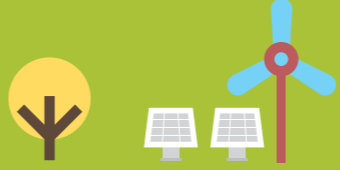


Ireland's Final Greenhouse Gas Emissions in 2022

National total emissions decreased 1.9% in 2022




↓ -1.8%
Energy Industries




Reductions in coal (-16%), oil (-29%), peat (-25%) in electricity generation were offset by an increase in natural gas (+13%). Renewable share increased from 35% to 39%

↓ -0.3%
Agriculture




14% Decrease in fertiliser nitrogen use resulted in less emissions from agricultural soils.
Dairy cow numbers **+0.9%**
Milk production **+0.7%**

↓ -15.9%
Residential




Substantial reduction in emissions driven by high fuel prices, regulation, and a milder winter. Coal use reduced by 33%, peat by 11%, oil by 16% and natural gas by 9%.

EU Targets




Before use of flexibilities Ireland has exceeded its 2022 annual Effort Sharing Regulation (ESR) limit by 3.54 Mt CO₂eq.


↑ +6.0%
Transport



Emissions have rebounded to 95% of pre-covid levels. 19% of new car registrations were electric in 2022, with 72,000 EVs overall on Irish roads.



Learn more on www.epa.ie/ghg



Greenhouse Gas EMISSIONS

www.epa.ie
* Environmental Protection Agency 2024

