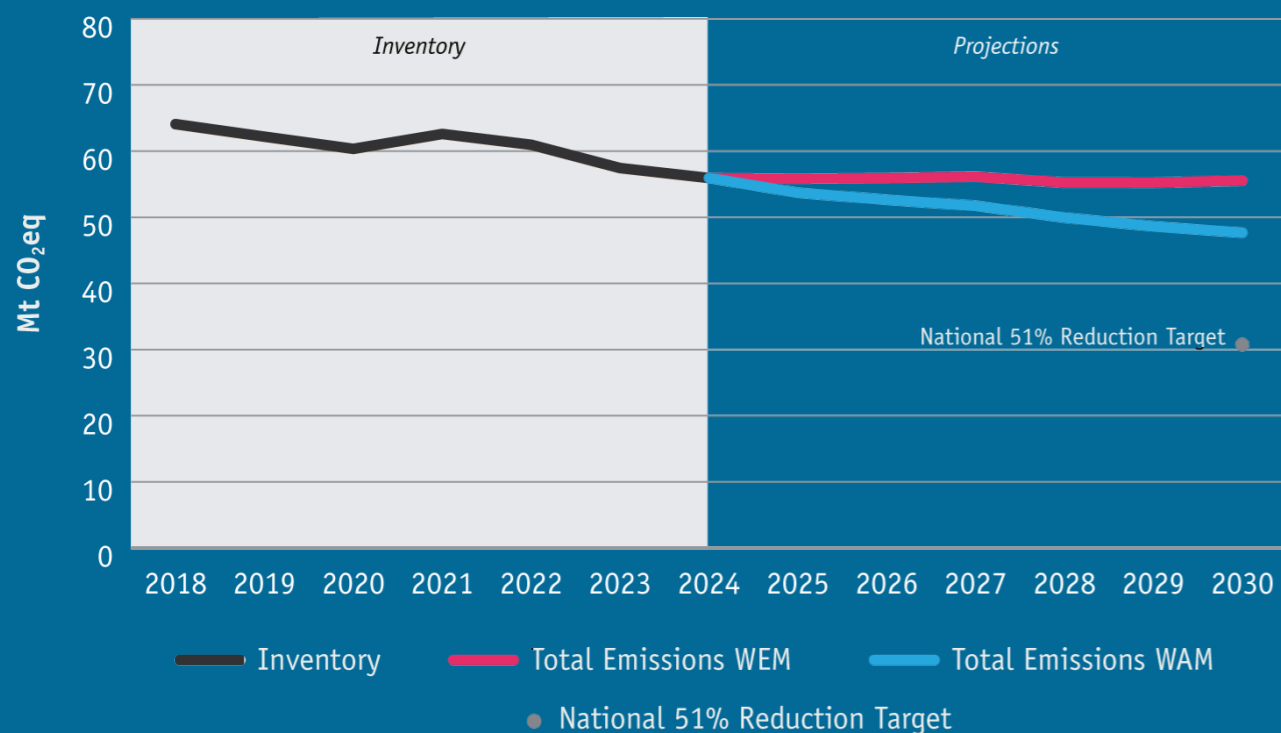
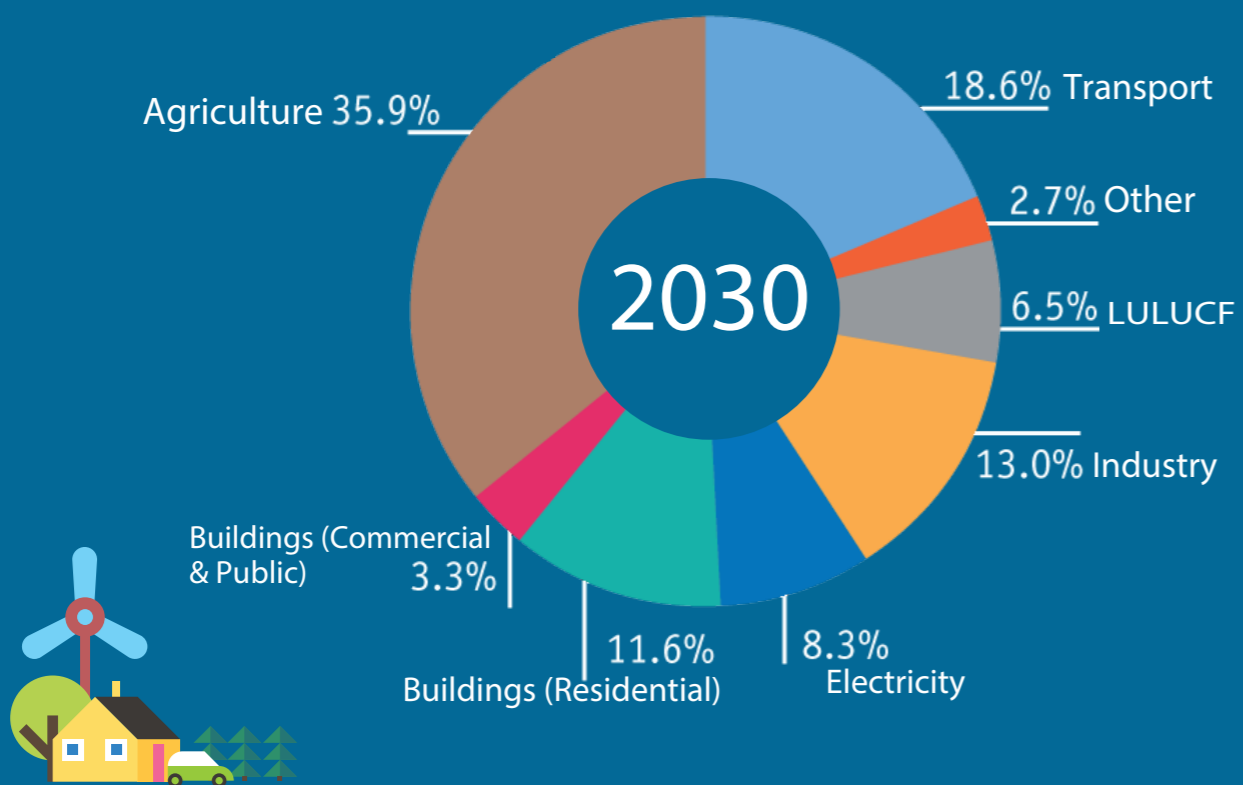


# Ireland's Greenhouse Gas Projections With Additional Measures (WAM) 2025-2030

Total greenhouse gas emissions out to the year 2030



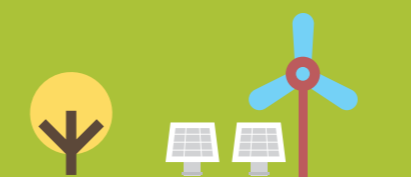
Ireland's projected emissions profile With Additional Measures



25% Reduction in greenhouse gas emissions by 2030 compared to the 2018 level

↓ 61%

Electricity Generation (2018-2030)



59% Energy from Wind and Solar by 2030

↓ 19%

Agriculture (2018-2030)



4.1 Mt CO<sub>2</sub>eq decrease over 2018- 2030 period

↓ 18%

Residential (2018-2030)



Installation of 440,000 heat pumps by 2030.

↑ 3%

Commercial & Public Services (2018-2030)



Slower uptake of low carbon heating technologies and less biomethane availability

↓ 28%

Transport (2018-2030)



Over 751,000 electric vehicles by 2030 and 'avoid and shift' measures

Early implementation of climate and environmental actions needed for long term improvement.



Learn more on [www.epa.ie/ghg](http://www.epa.ie/ghg)

## What can you do?

Your means of transport  
Reduce your transport carbon footprint by making use of alternatives to the private car such as:



Public Transport



Cycling



Walking



Food Waste

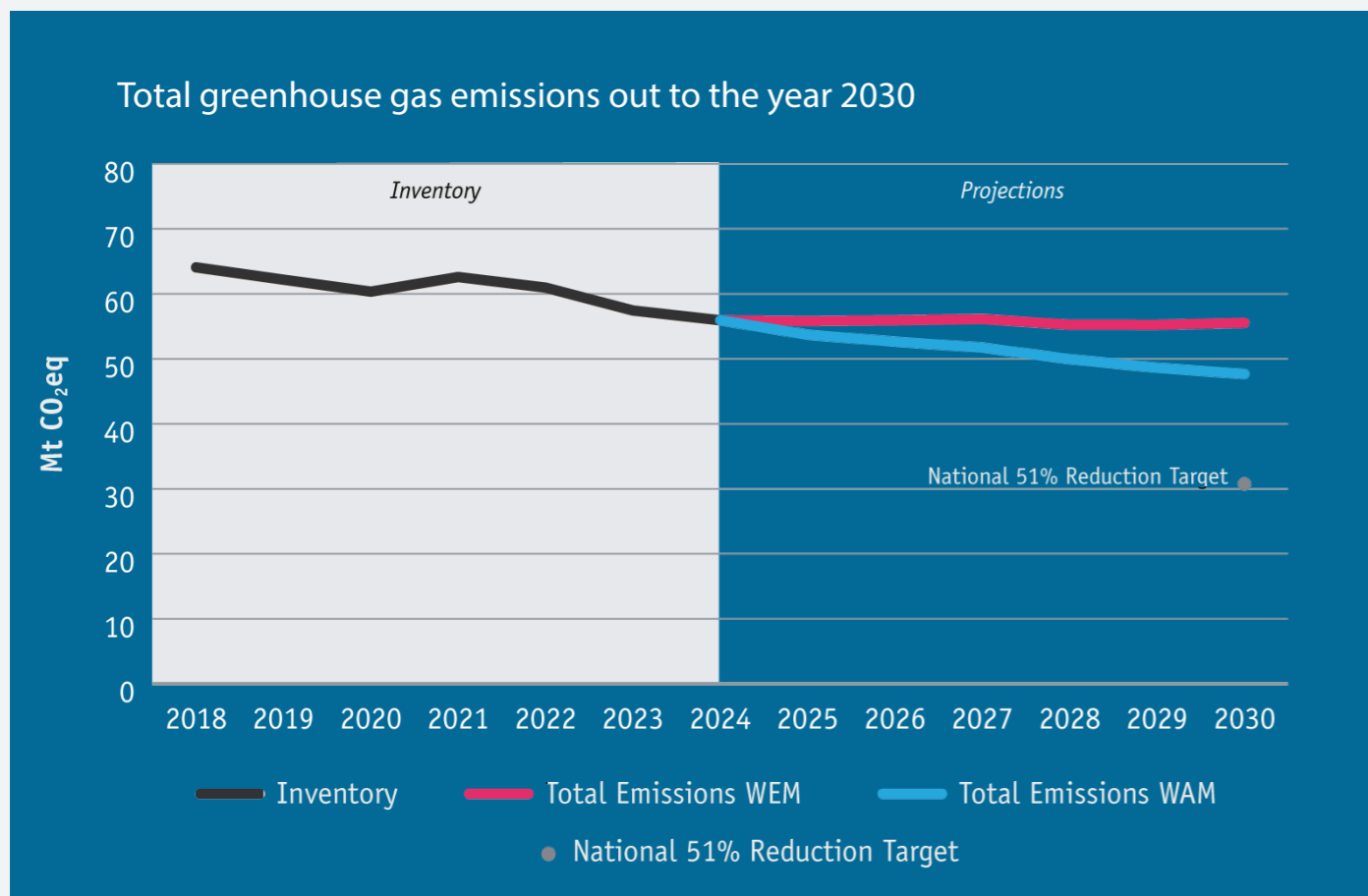


Energy Efficiency

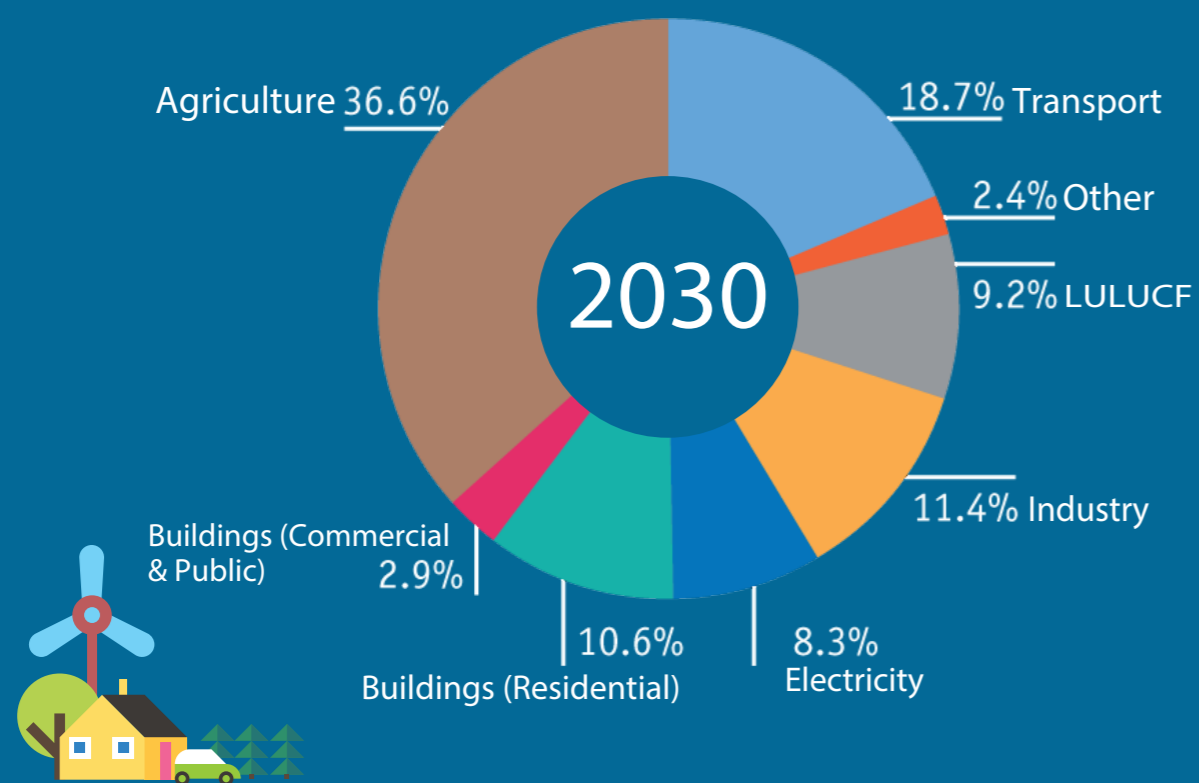
Your home  
Avoiding food waste is a climate action you can do every day. Check out [www.stopfoodwaste.ie](http://www.stopfoodwaste.ie)

Improve the energy efficiency of your dwelling by taking up SEAI grants and enjoy a more comfortable home with a smaller carbon footprint.

# Ireland's Greenhouse Gas Projections With Existing Measures (WEM) 2025-2030



### Ireland's projected emissions profile With Existing Measures



**13% Reduction in greenhouse gas emissions by 2030 compared to the 2018 level**

<p><b>↓ 55%</b> Electricity Generation (2018-2030)</p> <p>52% Energy from Wind and Solar by 2030</p>	<p><b>↓ 4%</b> Agriculture (2018-2030)</p> <p>Decrease in animal numbers and fertiliser use</p>	<p><b>↓ 13%</b> Residential (2018-2030)</p> <p>Installation of over 430,000 heat pumps by 2030</p>
<p><b>↑ 7%</b> Commercial &amp; Public Services (2018-2030)</p> <p>Slower uptake of low carbon heating technologies and less biomethane availability</p>	<p><b>↓ 16%</b> Transport (2018-2030)</p> <p>Over 675,000 electric vehicles by 2030 and increased use of biofuel</p>	<p>Early implementation of climate and environmental actions needed for long term improvement.</p> <p>Learn more on <a href="http://www.epa.ie/ghg">www.epa.ie/ghg</a></p>

### What can you do?

<p><b>Your means of transport</b> Reduce your transport carbon footprint by making use of alternatives to the private car such as:</p> <ul style="list-style-type: none"> <li>Public Transport</li> <li>Cycling</li> <li>Walking</li> </ul>	<p><b>Your home</b> Avoiding food waste is a climate action you can do every day. Check out <a href="http://www.stopfoodwaste.ie">www.stopfoodwaste.ie</a></p> <p>Improve the energy efficiency of your dwelling by taking up SEAI grants and enjoy a more comfortable home with a smaller carbon footprint.</p> <ul style="list-style-type: none"> <li>Food Waste</li> <li>Energy Efficiency</li> </ul>
---	--