

Water Framework Directive groundwater bodies have changed for River Basin Planning Cycle 2

In cycle 1 of the Water Framework Directive (WFD), from 2004 to 2009, groundwater bodies (GWB) were delineated based on their physical characteristics and where associated pressures or receptors were to separately managed e.g. for point source or wetlands. European Commission WFD CIS Guidance document No. 2 (2003), on the delineation of waterbodies, states physical characteristics **and** the likely WFD status of the waterbody should be used to set GWB units. The new cycle 2 GWB (May 2015) have this stronger relationship to WFD status classification objectives than the cycle 1 GWB.

Why have they changed?

During the first River Basin Management Planning cycle it became apparent that the link between water bodies and WFD status was not optimal. This has been addressed by a full assessment of all GWB pressures in Ireland.

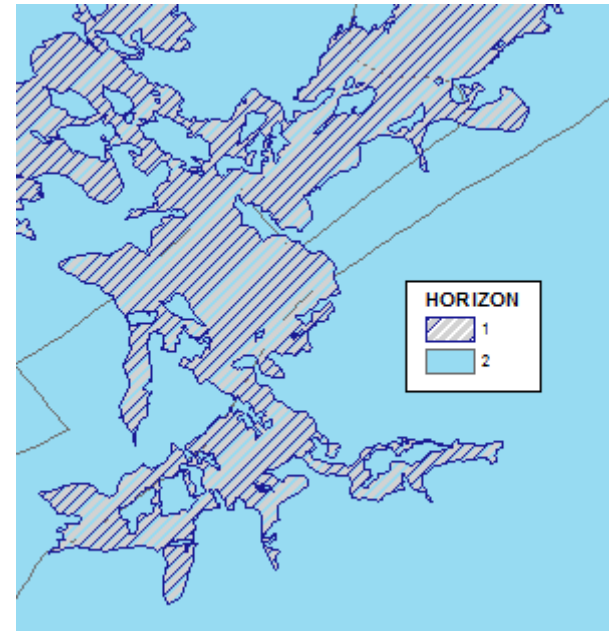


Fig 1 shows Birr sand and gravel (Horizon 1) overlying Birr bedrock (Horizon 2)

How have groundwater bodies changed?

The EPA and Geological Survey of Ireland (GSI) led a joint project to review the physical characteristics and produced updated groundwater bodies. The EPA instigated projects to assess and delineate groundwater bodies based on updated information on pressures and groundwater dependent wetlands in Ireland. The GWB boundaries were updated based on this assessment.

A second horizon has been added to represent sand and gravel GWB. Where they exist, sand and gravel GWB overlay bedrock GWB as horizon 1 features, with the bedrock beneath being assigned horizon 2.

What are the new names and codes?

The coding structure set in place for cycle 1 is being retained for cycle 2. Features that are considered to be common between the 2 cycles retain the same codes. The code for Athboy remains IE_EA_G_001. IE is the international code, EA stands for the current Eastern River Basin District, G indicated groundwater and the digits are incremental numbers. Athboy has a new horizon 2 feature where it is overlain by Kilrathmurry sand and gravels. For this horizon 2 part of Athboy a “-2” is added to the end of the code to relate it to the horizon 1 feature so the code is IE_EA_G_001-2.

As for cycle 1, the names relate to the locality or specific feature that defines the waterbody (e.g. a landfill).

Where can I get the new data?

You can view the new GWB (with their 2007-2012 status classification) under the WFD Status group of [EPA Maps](http://gis.epa.ie/Envision). (<http://gis.epa.ie/Envision>).

You can download GIS files of the new GWB from the Get Data section of the EPA Geoportal.

If you have any queries please [Contact Us](http://gis.epa.ie/ContactUs) on the EPA Geoportal. (<http://gis.epa.ie/ContactUs>)

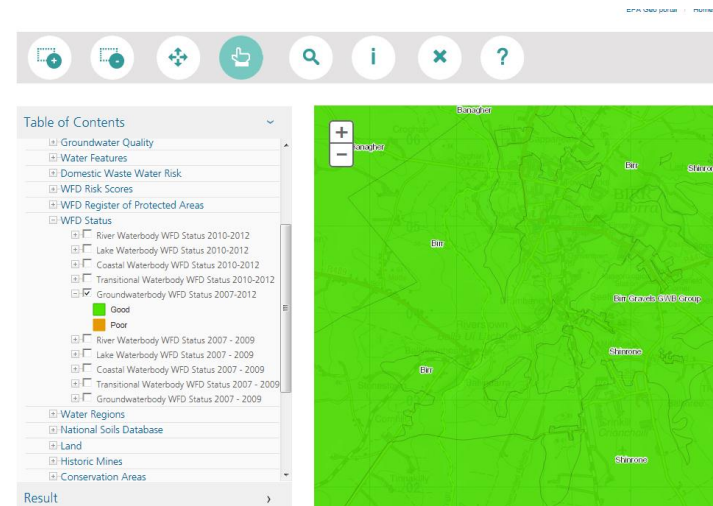


Fig 2 shows the Groundwaterbody status data available to view on EPA Maps