

National Hydrometric Monitoring Programme

2022 - 2027

ENVIRONMENTAL PROTECTION AGENCY

The EPA is responsible for protecting and improving the environment as a valuable asset for the people of Ireland. We are committed to protecting people and the environment from the harmful effects of radiation and pollution.

The work of the EPA can be divided into three main areas:

Regulation: Implementing regulation and environmental compliance systems to deliver good environmental outcomes and target those who don't comply.

Knowledge: Providing high quality, targeted and timely environmental data, information and assessment to inform decision making.

Advocacy: Working with others to advocate for a clean, productive and well protected environment and for sustainable environmental practices.

Our responsibilities include:

Licensing

- Large-scale industrial, waste and petrol storage activities;
- Urban waste water discharges;
- The contained use and controlled release of Genetically Modified Organisms;
- Sources of ionising radiation;
- Greenhouse gas emissions from industry and aviation through the EU Emissions Trading Scheme.

National Environmental Enforcement

- Audit and inspection of EPA licensed facilities;
- Drive the implementation of best practice in regulated activities and facilities;
- Oversee local authority responsibilities for environmental protection;
- Regulate the quality of public drinking water and enforce urban waste water discharge authorisations;
- Assess and report on public and private drinking water quality;
- Coordinate a network of public service organisations to support action against environmental crime;
- Prosecute those who flout environmental law and damage the environment.

Waste Management and Chemicals in the Environment

- Implement and enforce waste regulations including national enforcement issues;
- Prepare and publish national waste statistics and the National Hazardous Waste Management Plan;
- Develop and implement the National Waste Prevention Programme;
- Implement and report on legislation on the control of chemicals in the environment.

Water Management

- Engage with national and regional governance and operational structures to implement the Water Framework Directive;
- Monitor, assess and report on the quality of rivers, lakes, transitional and coastal waters, bathing waters and groundwaters, and measurement of water levels and river flows.

Climate Science & Climate Change

- Publish Ireland's greenhouse gas emission inventories and projections;
- Provide the Secretariat to the Climate Change Advisory Council and support to the National Dialogue on Climate Action;
- Support National, EU and UN Climate Science and Policy development activities.

Environmental Monitoring & Assessment

- Design and implement national environmental monitoring systems: technology, data management, analysis and forecasting;
- Produce the State of Ireland's Environment and Indicator Reports;
- Monitor air quality and implement the EU Clean Air for Europe Directive, the Convention on Long Range Transboundary Air Pollution, and the National Emissions Ceiling Directive;
- Oversee the implementation of the Environmental Noise Directive;
- Assess the impact of proposed plans and programmes on the Irish environment.
- Environmental Research and Development
- Coordinate and fund national environmental research activity to identify pressures, inform policy and provide solutions;
- Collaborate with national and EU environmental research activity.

Radiological Protection

- Monitoring radiation levels and assess public exposure to ionising radiation and electromagnetic fields;
- Assist in developing national plans for emergencies arising from nuclear accidents;
- Monitor developments abroad relating to nuclear installations and radiological safety;
- Provide, or oversee the provision of, specialist radiation protection services.

Guidance, Awareness Raising, and Accessible Information

- Provide independent evidence-based reporting, advice and guidance to Government, industry and the public on environmental and radiological protection topics;
- Promote the link between health and wellbeing, the economy and a clean environment;
- Promote environmental awareness including supporting behaviours for resource efficiency and climate transition;
- Promote radon testing in homes and workplaces and encourage remediation where necessary.

Partnership and networking

- Work with international and national agencies, regional and local authorities, non-governmental organisations, representative bodies and government departments to deliver environmental and radiological protection, research coordination and science-based decision making.

Management and structure of the EPA

The EPA is managed by a full time Board, consisting of a Director General and five Directors. The work is carried out across five Offices:

- Office of Environmental Sustainability
- Office of Environmental Enforcement
- Office of Evidence and Assessment
- Office of Radiation Protection and Environmental Monitoring
- Office of Communications and Corporate Services

The EPA is assisted by advisory committees who meet regularly to discuss issues of concern and provide advice to the Board.



National Hydrometric Monitoring Programme 2022 - 2027

ENVIRONMENTAL PROTECTION AGENCY

An Ghníomhaireacht um Chaomhnú Comhshaoil
PO Box 3000, Johnstown Castle, Co. Wexford, Ireland
Telephone: +353 53 9160600 Fax: +353 53 9160699
Email: info@epa.ie Website: www.epa.ie
Lo Call 1890 33 55 99

Disclaimer

Although every effort has been made to ensure the accuracy of the material contained in this publication, complete accuracy cannot be guaranteed. Neither the Environmental Protection Agency nor the author(s) accepts any responsibility whatsoever for loss or damage occasioned, or claimed to have been occasioned, in part or in full as a consequence of any person acting or refraining from acting, as a result of a matter contained in this publication. All or part of this publication may be reproduced without further permission, provided the source is acknowledged.

© Environmental Protection Agency 2022

Acknowledgements

Authors: Conor Quinlan, Janka Nitsche, Daniel O'Leary, Rebecca Quinn, Patrick Durkin, and Michael Bourke.

The authors would also like to thank their EPA colleagues, and members of the National Hydrometric Working Group for their assistance.

CONTENTS

Overview	1
Background	2
National Hydrometric Working Group	3
Configuration of the proposed National Hydrometric Monitoring Programme	4
Reviewing the Hydrometric Network	4
Rationale behind the National Programme	5
Programme network structure	5
Hydrological estimation in ungauged catchments	5
Station Classification	9
Future reviews of the National Hydrometric Monitoring Programme	10
Publication of Information	10
Appendix A: Section 64 of the Environmental Protection Agency Act	12
Appendix B: National Hydrometric Working Group - Terms of Reference	13
Appendix C: Station requirement assessment procedure for existing or new stations	14
Appendix D: Stations included in the National Hydrometric Monitoring Programme	16

OVERVIEW

The National Hydrometric Programme 2022-2027 sets out the hydrometric monitoring that will be undertaken by various public authorities in Ireland over the next six years.

The National Hydrometric Monitoring Programme comprises a subset of stations from the National Hydrometric Register.¹ The Register currently contains a total of 2,266 active and inactive (historic) stations in the Republic of Ireland. Of these, the 2022-2027 programme will consist of 498 active flow and level monitoring stations on rivers, 6 spot flow stations on springs, and 254 level only stations.

Table 1 shows the numbers of stations which will be included in the national hydrometric programme 2022-2027. The EPA plan to monitor at 250 of the 758 monitoring stations, with 462 monitored by the OPW, 18 monitored by the GSI, 27 by the ESB, and Waterways Ireland will monitor one station. Table 2 shows a breakdown of the programme stations by responsible body, measurement type and classification.

Table 1: Summary of stations contained in the National Hydrometric Monitoring Programme

Type of monitoring	Level and Flow	Lake Level or water level only	Spot Flows only	Total
Number of planned hydrometric stations 2022-2027	498	254	6	758

Table 2: Summary of station details in the National Hydrometric Monitoring Programme

Responsible Body	Station measurement type			Station National Classification		
	Level & Flow	Level	Spot Flow	Strategic	Operational	Project
EPA	214	30	6	124	105	21
OPW	267	195	0	202	214	46
ESB	16	11	0	12	15	0
GSI	0	18	0	18	0	0
WWI	1	0	0	0	1	0

In 2018, a full [review](#) of the national network was completed and this document provides an overview of the implementation of the 2018-2021 programme and identify changes to be made for the forthcoming programme (2022-2027).

During the 2018-2021 programme:

- Monitoring restarted following the reactivation of nineteen suspended stations in Cork and Kerry;
- Monitoring started for the first time at 15 new stations;

¹ The National Hydrometric Register is maintained by the EPA and contains details of all active and inactive hydrometric stations maintained by members of the National Hydrometric Working Group.

- Eight stations were closed as planned.

Changes for the 2022-2027 programme include:

- Collectively, the OPW, GSI and EPA have identified 96 new stations where they will commence monitoring in the next six years;
- Seven stations are planned for closure.

Background

The purpose of this document is to set out the actions taken to arrive at the national hydrometric monitoring network and to outline the programme for the period 2022-2027.

Hydrometric programmes are a critical component of water management practices internationally. Uses of hydrometric data and information include:

- Informing decision making on ecological flows (e-flows) abstraction and resource use;
- Informing decision making for flood risk protection;
- Informing emission limit values for discharge consents;
- Providing a mechanism for verification that activities and development are or are not having a negative impact on the environment;
- Informing decisions on infrastructural development e.g. roads, urban planning, flood alleviation schemes and small scale hydroelectric schemes;
- Supporting the development of flow standards and flow modelling in ungauged catchments; and
- Informing the decision making for climate change adaptation and mitigation actions in response to rising sea levels and changes in rainfall patterns.

The scope of this monitoring programme includes water level and flow monitoring stations on rivers and lakes. Specifically, lake and reservoir level, river level, river flow and spring flow stations are within the scope of this programme. Tidal or transitional monitoring stations are outside the scope of this monitoring programme. Canal water level stations are primarily for navigation and lock control operation and are therefore outside the scope of a national hydrometric programme. Groundwater level monitoring stations form part of the Water Framework Directive monitoring programme and are reviewed and published under a separate process relating to the requirements for that Directive.

There has been a national hydrometric monitoring programme in place in Ireland for several decades. Several agencies of the State and organisations are involved in the collection and analysis of hydrometric information in Ireland. Each of these organisations has an interest in hydrometric data and information for their own purposes. Within this context, the EPA is given a specific responsibility under Section 64 of the Environmental Protection Agency Act to prepare **“a national programme for the collection, analysis and publication of information on the levels, volumes and flows of water in rivers, lakes and groundwaters in the State”** (Appendix C). The national programme aims to provide hydrometric

information across the full range of flow conditions throughout the country. Its objective is to provide sufficient hydrometric data that allows effective management of our waters. Particular consideration has been given to the monitoring requirements arising from: the OPW's flood studies update (and the CFRAMs² programme); the hydrometric gauges included in the EPA's flow duration curve tool model (which enables flows to be modelled for all rivers in Ireland); stations identified for the Hydro Predict climate change research and the forthcoming Met Éireann flood warning programme; as well as monitoring requirement for specific abstraction, discharge licence and protected area's; and hydrometric data needs in the WFD Areas for Action.

Since the Environmental Protection Agency Act was put in place in 1992, the implementation of the Water Framework Directive and the Floods Directive have brought new legislative drivers on the quantitative aspects of water management and catchment management assessments. Predicted climate-driven changes in rainfall and evapotranspiration patterns mean there is an imperative to identify changes and trends in our water environment to ensure adaptation measures can be implemented appropriately. A national hydrometric monitoring programme has been in operation for many decades and the most recent published programme, for the period 2018-2021, has just reached completion.

National Hydrometric Working Group

Several agencies of the State and organisations are involved in the collection, analysis and publication of hydrometric information in Ireland. These organisations coordinate their hydrometric activities in Ireland via the National Hydrometric Working Group. The group is jointly led by the EPA and OPW and its membership currently consists of; EPA, OPW, Marine Institute, Inland Fisheries Ireland, National Parks and Wildlife Service, ESBI, City and County Management Association, Waterways Ireland, Teagasc, Department for Infrastructure (Rivers Agency), Northern Ireland, the Geological Survey Ireland, Met Éireann and Irish Water. A National Hydrometric Register is maintained by the EPA and contains details of all active and inactive hydrometric stations maintained by members of the National Hydrometric Working Group. The Group, which meets bi-annually, continues to develop its role and plays a central part in the future management of hydrometric data collection in Ireland.

During the period of the 2022-2027 programme, the National Hydrometric Working Group will continue to consider strategic, operational and technical issues within its remit. The National Hydrometric Working Group will facilitate strong governance of hydrometrics in Ireland, including maintenance of the national hydrometric register, data quality standards, station classification, development of a national, multi-organisational approach to station installation and closure processes, and the adoption of new technology and software as appropriate.

A key challenge for the Working Group relates to installation and maintenance of the monitoring stations within the EPA/Local Authority network. During 2022-2027, members of the Working Group will aim to identify and secure an acceptable funding model for this maintenance programme, and efficient mechanisms to ensure stations are maintained.

² The CFRAMs programme identified and assessed the risk of flooding in Ireland, which informed the flood risk management plans and associated monitoring. Further information is available at <https://www.floodinfo.ie/>.

Configuration of the proposed National Hydrometric Monitoring Programme

The stations on the National Hydrometric Monitoring Programme comprises a subset of stations from the National Hydrometric Register. The National Hydrometric Register is maintained by the EPA and contains details of all active and inactive hydrometric stations maintained by members of the National Hydrometric Working Group. The Register currently contains a total of 2,266 active and inactive (historic) stations in the Republic of Ireland. Not all of these are included in the National Monitoring Programme because they are either inactive or relate to specific activities like management of locks on canals. The remainder of this document sets out the process for determining which stations are included in the National Hydrometric Monitoring Programme.

Reviewing the Hydrometric Network

In 2018, a full [review](#) of the national network was completed. As part of this review process, an international comparison of hydrometric data collection in Ireland, Scotland, Wales and New Zealand was completed for the EPA by consultants. The international review compared network configuration, network resourcing and network management and governance. Results from the review of international practice showed that the existing hydrometric network configuration and organisational framework was broadly in-line with international norms. The National Hydrometric Monitoring Programme 2018-2021 was developed on foot of the review and the following recommended actions were undertaken:

- The recommendations of the international review have been incorporated into the national work programme.
- 19 of the 21 suspended stations in Cork and Kerry were reactivated following completion of works by the county councils. The remaining station was dropped from the programme due to the commencement of flood protection works and associated monitoring on that river.
- Eight stations were closed as planned.
- Monitoring began at two new operational stations. These stations had been assessed prior to the 2018-2021 hydrometric review and suitable gauging station locations had been identified.
- The EPA began monitoring at nine of the twenty proposed new project³ stations during 2018-2021. These stations were identified following a desk based assessment for possible spatial data gaps in the national programme. The OPW installed stations that satisfied data needs at a further four of the proposed project station locations. In the remaining seven catchments, EPA site surveys concluded that there was no technically feasible location where a station could be installed to provide accurate flow measurements. In these catchments during 2022-2027, occasional spot flow measurements will be taken to validate modelled flow data.
- All stations were reclassified as either strategic, operational or project stations.
- Stations that were originally used to monitor flood flows were assessed to determine if flow-ratings could be improved across the whole flow range.

³ Please refer to Table 6 for a description of the different station types.

- A shortened three-year cycle was completed so that future six year programme cycles would align with WFD River Basin Management Plans.

A further technical review of the national network was completed by the EPA in 2021 using the hydrometric area as the spatial unit for assessment (Figure 1). Hydrometric areas were chosen as they are delineated by catchment and provide the basis for WFD implementation.⁴ Within each hydrometric area the hydrometric data requirements needed to assess the main pressures and receptors, including surface water abstractions, discharges to surface water and protected areas was assessed relative to the existing hydrometric network.

The overall objective of this review was to identify and assess the suitability of the existing national hydrometric network to fulfil the requirement of the EPA and other stakeholders and to review progress in implementing the recommendations of the 2018 review. Overall, progress on the recommendations from the 2018 review has been good and the monitoring programme has been delivered.

Rationale behind the National Programme

Programme network structure

The national hydrometric monitoring programme consists of a network of hydrometric stations operated by the various public authorities. The network is managed within the framework of the national hydrometric areas, of which there are 40 (Figure 1). The stations record time series data of river flows, levels and lake levels around the country. Station upgrades or new station requirements and station closures which were identified from the review process will be progressed during the implementation period of this national programme i.e. by 2027 by the relevant public authorities. This network will provide a representative, long-term flow and water level dataset at a national scale. Operational requirements for licensing or WFD related work (investigative monitoring) will be accommodated by the inclusion of a targeted spot flow measurement programme and temporary project stations as required. Such spot flow and temporary station activities will provide a resource efficient and dynamic means of providing the required range of hydrometric data, from strategic, fixed, long-term locations to tactical, mobile, short-term locations.

Hydrological estimation in ungauged catchments

It is not possible to monitor flows everywhere. While hydrometric monitoring exists for several hundred rivers in Ireland, there are several thousand rivers that are not monitored. The EPA HydroTool model estimates hydrological statistics for ungauged catchments in Ireland and uses the monitored gauge data to help refine the model. On [EPA Water Maps](#), the EPA will continue to maintain a publicly available hydrological model capable of estimating naturalised flow statistics in ungauged catchments. The model will be further developed and refined using data obtained through the national hydrometric monitoring programme.

⁴ The hydrometric areas generally coincide with the WFD catchments although some larger hydrometric areas, like the Shannon, are split into multiple catchments for the purposes of WFD management.

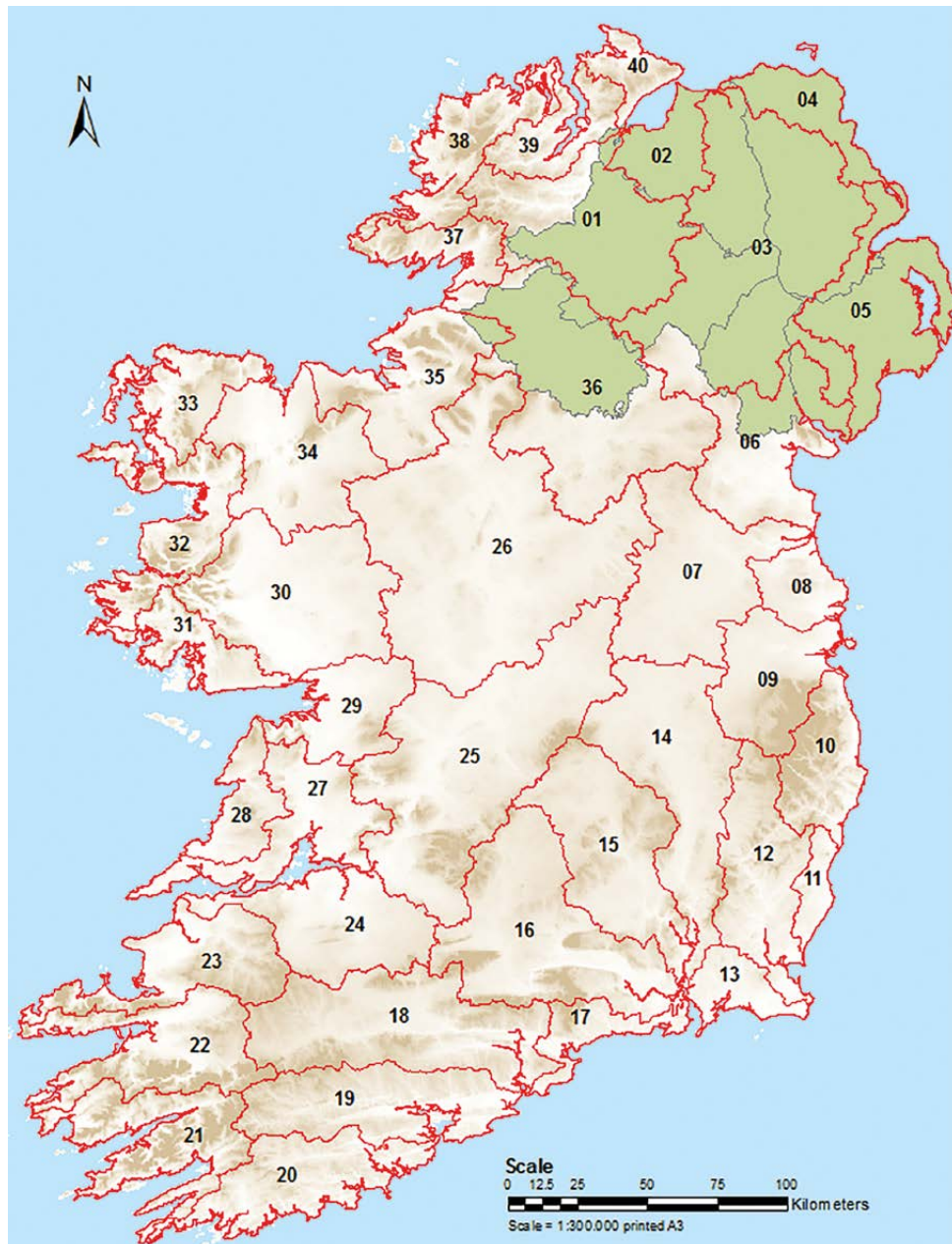


Figure 1: Map of Hydrometric Areas in Ireland

Based on an assessment of each Hydrometric Area, conclusions regarding the existing network and recommendations for future have been developed. In summary, for the 2022-2027 programme, the proposed changes to the existing network are:

- One location, on the Carrownisky River in west Mayo, has been identified at the request of Mayo County Council where a new EPA/LA station is required for long term flow-rating development. Initially this will start as a project station.
- In response to the Flood Risk Management Plans, the OPW has identified a need for 77 additional OPW stations for inclusion in the National Hydrometric Monitoring Programme. Due to the dynamic monitoring requirements needed during the Flood Risk Management Plans implementation, the OPW may also need to undertake monitoring at additional project stations during 2022-2027.

- 18 Geological Survey Ireland turlough wetland water level monitoring stations have been added to the programme. These will be managed by the GSI.
- Seven existing EPA/LA stations were closed (~3% of the total existing EPA/LA network). These were originally providing information to support the derivation of 95 percentile flows for wastewater treatment licensing and are no longer required for that purpose.
- There have been no closures to the OPW stations included in the 2018-2021 plan.
- There has been no change to the ESB, or Waterways Ireland stations included in the 2018-2021 plan.

Tables 3, 4 and 5 show the numbers of stations which will be included in the national hydrometric programme 2022-2027, respectively broken down by station type, organisation and hydrometric area. Several stations require flow rating improvement because they were originally designed to only assess flood flows. The development of ratings across the whole flow range has been progressed where the station is suitable for rating improvement and where data requirement priorities have identified a need.

Table 3: Summary of stations contained in the National Hydrometric Monitoring Programme

Type of monitoring	Level and Flow	Lake Level or water level only	Spot Flows only	Total
Number of planned hydrometric stations 2022-2027	498	254	6	758

Table 4: Summary of station details in the National Hydrometric Monitoring Programme

Responsible Body	Station measurement type			Station National Classification		
	Level & Flow	Level	Spot Flow	Strategic	Operational	Project
EPA	214	30	6	124	105	21
OPW	267	195	0	202	214	46
ESB	16	11	0	12	15	0
GSI	0	18	0	18	0	0
WWI	1	0	0	0	1	0

Table 5: Summary of monitoring stations contained in the national hydrometric monitoring Programme by Hydrometric Area

Hydrometric Area	Total flow-rated stations	Total lake level or level only stations	Total spot flow only stations	Total stations to be included in NHMP (EPA/LA and other organisations)
Foyle (01)	6	1	0	7
Lough Foyle (02)*	n/a	n/a	n/a	n/a
Lough Neagh and Lower Bann (03)	4	2	0	6
Bush and North East Coast (04)*	n/a	n/a	n/a	n/a
Belfast Lough and East Down (05)*	n/a	n/a	n/a	n/a
Newry, Fane, Glyde and Dee (06)	10	7	0	17
Boyne (07)	19	9	0	28
Nanny-Delvin (08)	4	3	0	7
Liffey and Dublin Bay (09)	29	5	0	34
Ovoca-Vartry (10)	10	2	0	12
Owenavorrhagh (11)	2	0	0	2
Slaney and Wexford Hb'R (12)	11	7	1	19
Ballyteigue-Bannow (13)	3	3	0	6
Barrow (14)	28	3	0	31
Nore (15)	18	3	0	21
Suir (16)	29	19	0	48
Colligan-Mahon (17)	3	1	0	4
Blackwater (Munster) (18)	24	13	0	37
Lee, Cork Hb'R and Youghal Bay (19)	28	11	0	39
Bandon-Ilen (20)	6	3	0	9
Dunmanus-Bantry-Kenmare (21)	8	2	0	10
Laune-Mine-Dingle Bay (22)	11	5	0	16
Tralee Bay-Feale (23)	13	13	0	26
Shannon Estuary South (24)	21	6	0	27
Lower Shannon (25)	36	16	0	52
Upper Shannon (26)	43	34	0	77
Shannon Estuary North (27)	9	14	0	23
Mal Bay (28)	4	1	0	5
Galway Bay South East (29)	13	10	0	23
Corrib (30)	18	14	2	34
Galway Bay North (31)	3	4	0	7
Erriff-Clew Bay (32)	10	3	0	13
Blacksod-Broadhaven (33)	6	1	0	7
Moy and Killala Bay (34)	18	13	3	34

Hydrometric Area	Total flow-rated stations	Total lake level or level only stations	Total spot flow only stations	Total stations to be included in NHMP (EPA/LA and other organisations)
Sligo Bay and Drowse (35)	15	8	0	23
Erne (36)	14	16	0	30
Donegal Bay North (37)	7	0	0	7
Gweebarra-Sheephaven (38)	6	0	0	6
Lough Swilly (39)	6	1	0	7
Donegal-Moville (40)	3	1	0	4
Total	498	254	6	758

*these hydrometric areas are solely in Northern Ireland and are not covered by this programme

Station Classification

Following the framework established in the 2018 Programme, all stations have been assigned to one of the three sub-categories as detailed in Table 4 and explained in detail in Table 6.

Table 6: Proposed Hydrometric Station Categories

Sub-category	Definition	No of stations
Strategic	Permanent stations that are strategically important to provide data for multiple uses and overall provide data required for the understanding of the hydrology of Ireland. Such stations are particularly important for modelling and statutory reporting requirements.	356
Operational	Long-term stations installed to provide data for ongoing use such as flow at major wastewater treatment plants, abstractions etc. (typically operated for >10 years).	335
Project	Temporary stations installed for a defined project to provide data for a specific use (including modelling). Projects may last for extended periods.	67
Total		758

The station classification in Table 6 does not denote the overall data quality at a site but rather the importance of data collection at that site. Its main value is to provide a framework to manage the network into the future in such a way that data collection is not discontinued at important sites without an appropriate review being undertaken. It is important to note that stations can be designated in any of the three categories based on their importance to individual organisations, even if they are not fully rated across all ranges of flow. Consequently, some stations may be strategically important, although they only focus, and are only suitable, for the monitoring of high or low flows. It may be possible to develop the rating curve across a full range of flows and several stations have been identified for further rating curve development.

Future reviews of the National Hydrometric Monitoring Programme

The national hydrometric monitoring programme should be reviewed periodically as per Section 64 of the EPA Act. During the coming years there are also likely to be changes in the hydrometric networks operated by other public organisations such as when the OPW as Floods Directive related work is completed or arising from abstraction licences. The Geological Survey of Ireland has also commenced a turlough monitoring project which has resulted in the establishment of 18 turlough level monitoring stations and these stations are included in the proposed 2022-27 Programme. It is possibly that the groundwater flooding assessments may lead to further groundwater flooding hydrometric stations during this programme. The HydroDetect climate change monitoring network is also currently under review, although initial findings have been considered in the development of the proposed 2022-27 national hydrometric programme.

The EPA operates a network of groundwater level monitoring stations to support WFD implementation. These stations capture hydrometric data but have been excluded from this hydrometric review as they are being assessed separately under the national WFD monitoring review. Overall, the requirements of the WFD provide the drivers for the national groundwater level monitoring programme, with water level monitoring of turloughs or springs being considered surface water, although they are representations of groundwater that emerges at the earth's surface.

In the context of these ongoing developments, the next scheduled review of the national hydrometric monitoring programme should commence in 2027.

Publication of Information

As set out above, Section 64 requires that the National Monitoring Programme provide for the “**publication of information on the levels, volumes and flows of water in rivers, lakes and groundwaters in the State**”. To this end, in conjunction with the other hydrometric monitoring bodies, the EPA has put in place the [*HydroNet web portal*](#) (Figure 2). The web portal contains all active and inactive (historic) hydrometric stations contained in the national hydrometric register including EPA/LA, OPW, ESB, GSI, Marine Institute, and Waterways Ireland stations. The web portal contains both access to surface water level and water flow volume data and groundwater level data.

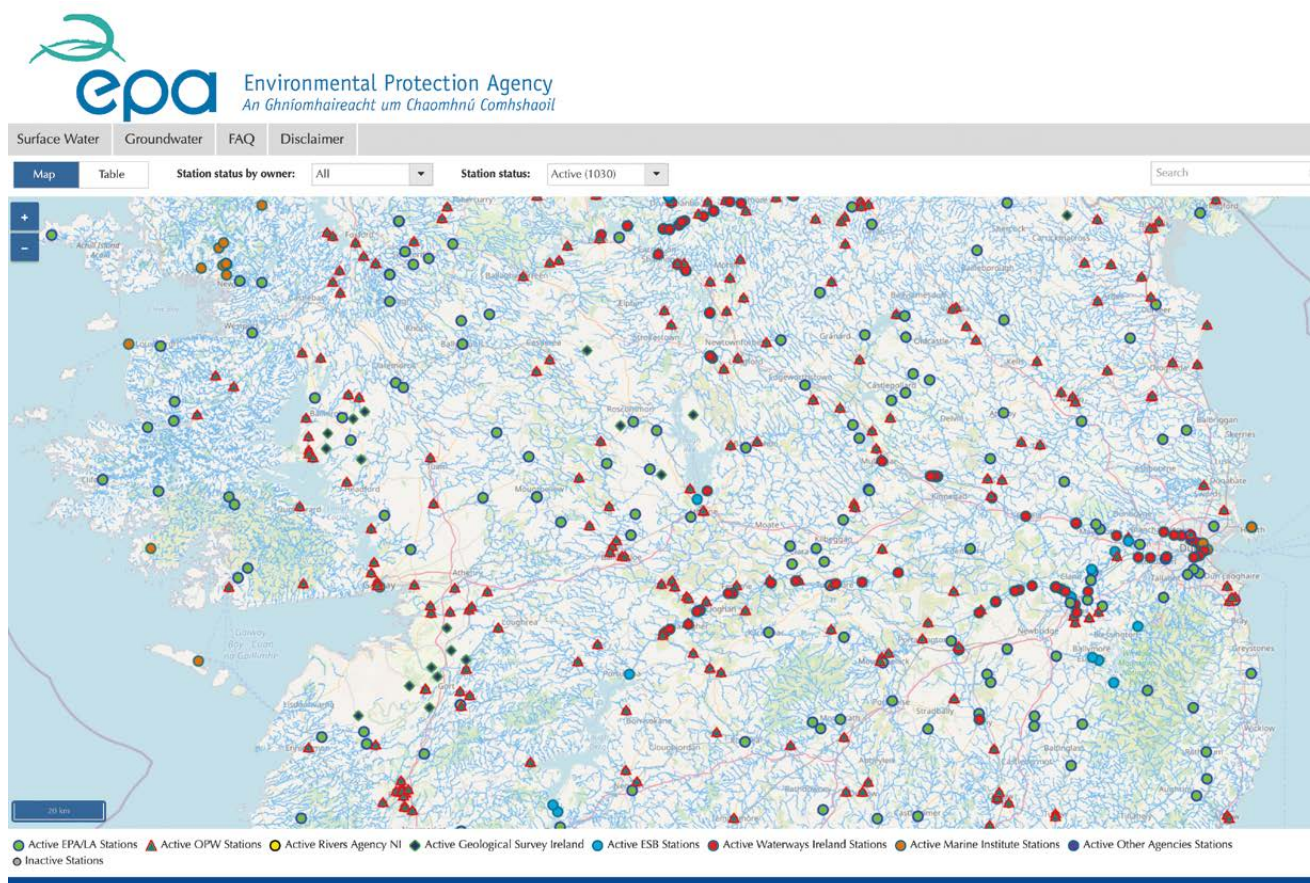


Figure 2: HydroNet

The portal does not provide access to all hydrometric data but provides access to the hydrometric data sets for stations operated by external agencies via links contained on the station information pages.

- OPW data can be accessed at <http://www.waterlevel.ie>;
- ESB data can be accessed at: <https://esb.ie/our-businesses/generation-energy-trading-new/hydrometric-information/overview>;
- GSI data can be accessed at: <https://gwlevel.ie/>; and
- Marine Institute data can be accessed at: <http://www.marine.ie/HomelSite-area/data-services/real-time-observations/real-time-observations>.
- Waterways Ireland data can be accessed from: Hydrometrics.User@waterwaysireland.org

Monthly updates of the current state of river and spring flows, lake and groundwater levels are made available in the National Hydrology bulletin. The [Bulletin](#) was first published in May 2020 and is produced with contributions from the EPA, OPW, GSI and Met Éireann.

Appendix A: Section 64 of the Environmental Protection Agency Act

- (1) The Agency shall, after consultation with such persons or bodies (if any) as may be prescribed, prepare a national programme for the collection, analysis and publication of information on the levels, volumes and flows of water in rivers, lakes and groundwaters in the State (in this Act referred to as “hydrometric data”), and a copy of such programme shall, as soon as may be, be sent by the Agency to the Minister
- (2) A programme under this section may, after consultation with the persons or bodies (if any) referred to in *subsection (1)*, be revised from time to time by the Agency and shall be reviewed at least every five years
- (3) It shall be the duty of the Agency to take appropriate steps to ensure that a programme under this section is implemented and for that purpose the Agency may
 - (a) direct a local authority to provide, operate and maintain such gauges and other equipment as it may specify and to furnish specified information to the Agency in such manner and at such times as it may specify
 - (b) make arrangements with any public authority, or other person or body to provide, operate and maintain such gauges and other equipment as it may specify and to furnish specified information to the Agency in such manner and at such times as it may specify
 - (c) provide, operate and maintain gauges and other equipment for recording hydrometric data
- (4) Where the Agency is not satisfied with the response of a local authority to a direction under *subsection (3) (a)*, it shall consult with the local authority concerned, and, if the Agency is still dissatisfied with the response following such consultation, the Agency shall carry out, cause to be carried out, or arrange for, the monitoring concerned and the costs of the monitoring may be recovered by the Agency from the local authority as a simple contract debt in any court of competent jurisdiction.

Appendix B: National Hydrometric Working Group - Terms of Reference

The Terms of Reference of the National Hydrometric Working Group are:

- Provide a **forum** where all issues relating to the operation of sustainable hydrological networks and services can be discussed among interested stakeholders and the various bodies involved
- Act as a platform for the **exchange of both scientific and technical expertise** while advocating the development of best hydrometric practices
- Foster and **strengthen collaboration** amongst the various organisations to support the implementation of the National Hydrometric Programme
- Discuss **policies, programmes, and activities** for the collection, analysis, assessment, archiving, and distribution, of surface water, groundwater, and related metadata
- Adopt guidelines to ensure **common terminology and definitions** of surface water, groundwater and statistics, including comparable data quality flags
- Establish improved **mechanisms for shared services**, including creating links to make good quality up to date hydrometric data more accessible to all interested parties
- Identify **training requirements** and recommend collaborative training activities to make the most effective use of resources and to facilitate data quality, comparability, and sharing among the various organisations
- Discuss issues and requirements for hydrometric data related to the implementation of **EU directives** and other reporting requirements

Appendix C: Station requirement assessment procedure for existing or new stations

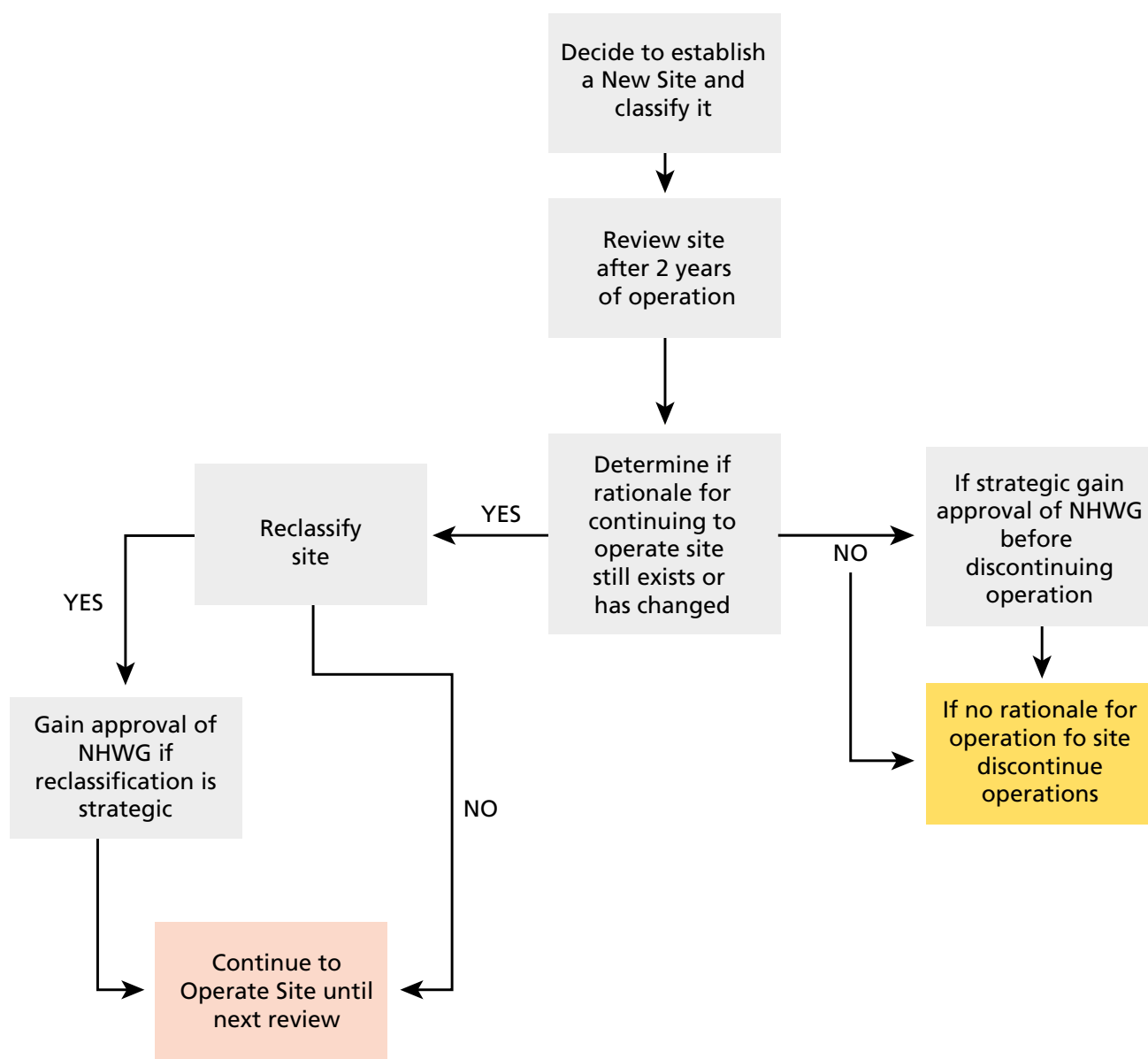


Figure 3: Process for management of new stations

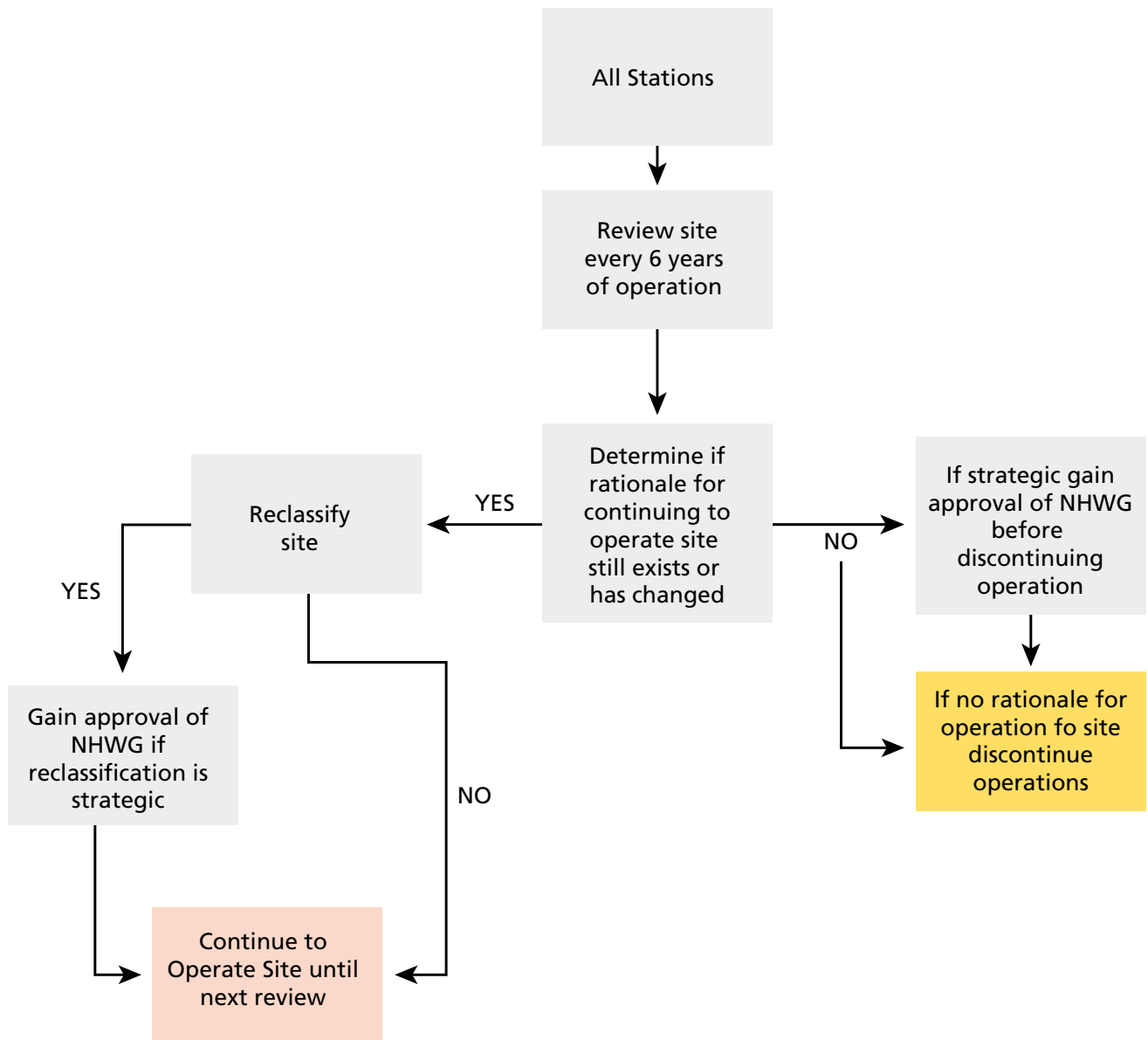


Figure 4: Process for review of all stations

Appendix D: Stations included in the National Hydrometric Monitoring Programme

Station number	Station Name	Responsible Body	Hydrometric Data Available	National classification
1016	GORTINLIEVE	Environmental Protection Agency	Water Level and Flow	Project
1041	SANDY MILLS	Office of Public Works	Water Level and Flow	Strategic
1043	BALLYBOFEY	Office of Public Works	Water Level and Flow	Operational
1054	CROAGHNAGAWNA	Environmental Protection Agency	Water Level and Flow	Strategic
1055	MOURNE BEG WEIR	Environmental Protection Agency	Water Level and Flow	Strategic
1056	COOLADERRY	Environmental Protection Agency	Water Level and Flow	Project
1071	LOUGH MOURNE	Environmental Protection Agency	Water Level Only	Strategic
3051	FAULKLAND	Environmental Protection Agency	Water Level and Flow	Strategic
3055	GLASLOUGH	Office of Public Works	Water Level and Flow	Strategic
3057	EMYVALE WEIR	Environmental Protection Agency	Water Level Only	Operational
3058	CAPPOG BRIDGE	Office of Public Works	Water Level and Flow	Operational
3070	EMY LOUGH	Environmental Protection Agency	Water Level Only	Strategic
3100	DERRYNASHALLOG	Environmental Protection Agency	Water Level and Flow	Project
6011	MOYLES MILL	Office of Public Works	Water Level and Flow	Strategic
6012	CLAREBANE	Office of Public Works	Water Level and Flow	Operational
6013	CHARLEVILLE	Office of Public Works	Water Level and Flow	Strategic
6014	TALLANSTOWN	Office of Public Works	Water Level and Flow	Strategic
6015	BREWERY PARK	Office of Public Works	Water Level and Flow	Project
6021	MANSFIELDSTOWN	Office of Public Works	Water Level and Flow	Operational
6025	BURLEY	Office of Public Works	Water Level and Historic Flow	Operational
6026	ACLINT	Office of Public Works	Water Level and Historic Flow	Operational
6030	BALLYGOLY	Environmental Protection Agency	Water Level and Flow	Strategic
6033	CONEYBURROW BR.	Environmental Protection Agency	Water Level and Flow	Operational
6036	LADYSWELL	Office of Public Works	Water Level and Flow	Operational
6056	DRUMLEEK	Environmental Protection Agency	Water Level and Flow	Operational
6060	PORT ORIEL	Office of Public Works	Water Level Only	Operational
6061	DUNDALK PORT	Office of Public Works	Water Level Only	Operational
6063	CARLINGFORD	Office of Public Works	Water Level Only	Project
6070	MUCKNO	Environmental Protection Agency	Water Level and Historic Flow	Strategic
6074	MOYLAN LOUGH	Geological Survey Ireland	Water Level Only	Strategic

Station number	Station Name	Responsible Body	Hydrometric Data Available	National classification
7001	TREMBLESTOWN	Office of Public Works	Water Level and Flow	Strategic
7002	KILLYON	Office of Public Works	Water Level and Flow	Strategic
7003	CASTLERICKARD	Office of Public Works	Water Level and Flow	Strategic
7004	STRAMATT	Office of Public Works	Water Level and Flow	Strategic
7005	TRIM	Office of Public Works	Water Level and Flow	Strategic
7006	FYANSTOWN	Office of Public Works	Water Level and Flow	Strategic
7007	BOYNE AQUEDUCT	Office of Public Works	Water Level and Flow	Strategic
7009	NAVAN WEIR	Office of Public Works	Water Level and Flow	Strategic
7010	LISCARTAN	Office of Public Works	Water Level and Flow	Strategic
7011	O DALY S BR.	Office of Public Works	Water Level and Flow	Operational
7012	SLANE CASTLE	Office of Public Works	Water Level and Flow	Strategic
7017	ROSEHILL	Environmental Protection Agency	Water Level and Flow	Strategic
7023	ATHBOY	Environmental Protection Agency	Water Level and Flow	Strategic
7024	CLONYMEATH	Environmental Protection Agency	Water Level Only since August 1984	Operational
7033	VIRGINIA HATCHERY	Office of Public Works	Water Level and Flow	Strategic
7037	BLACKCASTLE	Office of Public Works	Water Level Only	Operational
7041	BALLINTER BR.	Environmental Protection Agency	Water Level and Flow	Strategic
7044	BALLIVOR	Environmental Protection Agency	Water Level and Flow	Operational
7049	TINKER S BR.	Office of Public Works	Water Level Only	Operational
7062	MORNINGTON	Office of Public Works	Water Level Only	Strategic
7071	SKEAGH	Environmental Protection Agency	Water Level Only	Strategic
7074	BALLANY	Environmental Protection Agency	Water Level Only	Strategic
7077	WHITE LOUGH	Environmental Protection Agency	Water Level Only	Operational
7078	LOUGH BANE	Environmental Protection Agency	Water Level Only	Operational
7081	VIRGINIA	Office of Public Works	Water Level Only	Operational
7109	KISHAWANNY WEIR	Environmental Protection Agency	Water Level and Flow	Strategic
7112	COLLON	Environmental Protection Agency	Water Level and Flow	Operational
7115	NEWFIELD	Office of Public Works	Water Level and Flow	Project
8002	NAUL	Environmental Protection Agency	Water Level and Flow	Strategic
8008	BROADMEADOW	Office of Public Works	Water Level and Flow	Strategic
8010	GARRISTOWN S.W.	Environmental Protection Agency	Water Level and Flow	Strategic
8011	DULEEK D/S	Office of Public Works	Water Level and Flow	Strategic
8018	BEAUMONT	Office of Public Works	Water Level Only	Operational
8019	DULEEK COMMONS	Office of Public Works	Water Level Only	Operational
8020	ABBEYLAND (DULEEK)	Office of Public Works	Water Level Only	Operational

Station number	Station Name	Responsible Body	Hydrometric Data Available	National classification
9001	LEIXLIP	Office of Public Works	Water Level and Flow	Strategic
9002	LUCAN	Environmental Protection Agency	Water Level and Flow	Strategic
9006	CELBRIDGE	Electricity Supply Board	Water Level and Flow	Operational
9007	GOLDEN FALLS	Electricity Supply Board	Water Level and Flow	Strategic
9009	WILLBROOK ROAD	Environmental Protection Agency	Water Level and Flow	Strategic
9010	WALDRON S BRIDGE	Environmental Protection Agency	Water Level and Flow	Strategic
9011	FRANKFORT	Environmental Protection Agency	Water Level and Flow	Strategic
9013	STRAFFAN D/S	Electricity Supply Board	Water Level Only	Operational
9014	BALLYWARD	Electricity Supply Board	Water Level Only	Operational
9017	LOCKSTOWN BR.	Electricity Supply Board	Water Level Only	Operational
9022	LEIXLIP POWER STATION	Electricity Supply Board	Water Level and Flow	Strategic
9024	MORELL BRIDGE	Environmental Protection Agency	Water Level and Flow	Operational
9026	ANNALECKA BR.	Environmental Protection Agency	Water Level and Flow	Project
9027	BROQUESTOWN	Environmental Protection Agency	Water Level and Flow	Operational
9032	POLLAPHOUCA	Electricity Supply Board	Water Level and Flow	Strategic
9033	LEINSTER AQUEDUCT	Electricity Supply Board	Water Level Only	Operational
9035	KILLEEN ROAD	Environmental Protection Agency	Water Level and Flow	Strategic
9037	BOTANIC GARDENS	Environmental Protection Agency	Water Level and Flow	Strategic
9040	NICHOLASTOWN	Environmental Protection Agency	Water Level and Flow	Operational
9042	OSBERSTOWN HOUSE	Environmental Protection Agency	Water Level and Flow	Operational
9044	KERDIFFSTOWN HOUSE	Environmental Protection Agency	Water Level and Flow	Operational
9045	BOTANIC GARDENS BACKUP	Office of Public Works	Water Level Only	Operational
9047	BARONRATH	Environmental Protection Agency	Water Level and Flow	Operational
9048	ANNES BR.	Environmental Protection Agency	Water Level and Flow	Strategic
9049	MAYNOOTH	Environmental Protection Agency	Water Level and Flow	Strategic
9102	CADBURY'S	Environmental Protection Agency	Water Level and Flow	Strategic
9103	GLENASMOLE	Environmental Protection Agency	Water Level and Flow	Strategic
9105	KINSALEY HALL	Office of Public Works	Water Level and Flow	Operational
9107	TIPPER	Office of Public Works	Water Level and Flow	Project
9108	KILLASHEE	Office of Public Works	Water Level and Flow	Project
9109	HAYNESTOWN	Office of Public Works	Water Level and Flow	Project
9110	BLUBELL	Office of Public Works	Water Level and Flow	Project
9111	HAZELHATCH	Office of Public Works	Water Level and Flow	Project
9267	NAAS BRANCE LESINTER MILLS L2	Waterways Ireland	Water Level and Flow	Operational
10002	RATHDRUM	Environmental Protection Agency	Water Level and Flow	Strategic

Station number	Station Name	Responsible Body	Hydrometric Data Available	National classification
10021	COMMON S ROAD	Environmental Protection Agency	Water Level and Flow	Strategic
10028	KNOCKNAMOHILL	Environmental Protection Agency	Water Level and Flow	Strategic
10038	DRUIDS GLEN	Environmental Protection Agency	Water Level and Flow	Strategic
10039	AVONMORE HOUSE	Environmental Protection Agency	Water Level and Flow	Operational
10042	ARKLOW TOWN BRIDGE	Office of Public Works	Water Level Only	Strategic
10044	WHITE BRIDGE	Environmental Protection Agency	Water Level and Flow	Operational
10047	GLENAVON	Office of Public Works	Water Level and Flow	Project
10048	CHERRY WOOD	Office of Public Works	Water Level and Flow	Project
10049	MEADOW VALE PARK	Office of Public Works	Water Level and Flow	Project
10050	BRIDES GLEN	Office of Public Works	Water Level and Flow	Project
10060	ARKLOW HARBOUR	Office of Public Works	Water Level Only	Operational
11001	BOLEANY	Office of Public Works	Water Level and Flow	Strategic
11004	BALLYCANEW	Environmental Protection Agency	Water Level and Flow	Operational
12001	SCARAWALSH	Office of Public Works	Water Level and Flow	Strategic
12002	ENNISCORTHY	Office of Public Works	Water Level and Flow	Strategic
12005	TULLOW TOWN BR. U_S	Office of Public Works	Water Level and Flow	Strategic
12006	TULLOWBEG	Office of Public Works	Water Level Only	Strategic
12007	ST. JOHN'S BR	Office of Public Works	Water Level Only	Strategic
12008	RAFTER BR. D_S	Office of Public Works	Water Level Only	Strategic
12009	RAFTER BR. U_S	Office of Public Works	Water Level Only	Strategic
12013	RATHVILLY	Environmental Protection Agency	Water Level and Flow	Strategic
12016	DUNANORE	Environmental Protection Agency	Water Level and Flow	Strategic
12036	MANGAN	Environmental Protection Agency	Water Level and Flow	Strategic
12037	CASTLERUDDERY	Environmental Protection Agency	Water Level and Flow	Operational
12038	WOODLANDS	Environmental Protection Agency	Water Level and Flow	Strategic
12039	PALLIS NEW	Environmental Protection Agency	Water Level and Flow	Strategic
12040	FINOGE BR.	Environmental Protection Agency	Water Level and Flow	Operational
12041	BARNAHASK BR.	Environmental Protection Agency	Water Level and Flow	Operational
12042	MANGAN MILL	Environmental Protection Agency	Spot flow measurements	Operational
12061	EDERMINE BRIDGE	Office of Public Works	Water Level Only	Strategic
12063	ASSALY	Office of Public Works	Water Level Only	Operational
12064	FERRYCARRIG BR.	Office of Public Works	Water Level Only	Operational
13001	GOFF S BR.	Environmental Protection Agency	Water Level and Flow	Operational
13002	FOULK S MILL	Environmental Protection Agency	Water Level and Flow	Strategic

Station number	Station Name	Responsible Body	Hydrometric Data Available	National classification
13003	MULLINDERRY	Environmental Protection Agency	Water Level and Flow	Strategic
13070	LADY'S ISLAND	Office of Public Works	Water Level Only	Operational
13072	SIGGINSTOWN	Office of Public Works	Water Level Only	Operational
13081	CULL BANK	Office of Public Works	Water Level Only	Operational
14001	CARLOW	Office of Public Works	Water Level Only	Operational
14003	BORNESS	Office of Public Works	Water Level and Flow	Operational
14004	CLONBULLOGE	Office of Public Works	Water Level and Flow	Operational
14005	PORTARLINGTON	Office of Public Works	Water Level and Flow	Operational
14006	PASS BR	Office of Public Works	Water Level and Flow	Strategic
14007	DERRYBROCK	Office of Public Works	Water Level and Flow	Strategic
14009	CUSHINA	Office of Public Works	Water Level and Flow	Strategic
14011	RATHANGAN	Office of Public Works	Water Level and Flow	Strategic
14013	BALLINACARRIG	Office of Public Works	Water Level and Flow	Strategic
14014	PORTLAOISE	Environmental Protection Agency	Water Level and Flow	Strategic
14018	ROYAL OAK	Office of Public Works	Water Level and Flow	Strategic
14019	LEVITSTOWN	Office of Public Works	Water Level and Flow	Strategic
14022	BARROW NEW BRIDGE	Office of Public Works	Water Level and Flow	Strategic
14027	BORRIS	Environmental Protection Agency	Water Level and Flow	Operational
14029	GRAIGUENAMANAGH U/S	Office of Public Works	Water Level and Flow	Strategic
14031	JAPANESE GDNS	Environmental Protection Agency	Water Level and Flow	Strategic
14042	REARY VALLEY	Environmental Protection Agency	Water Level and Flow	Operational
14056	MILFORD LOCK	Office of Public Works	Water Level Only	Operational
14057	TIMOLIN	Environmental Protection Agency	Water Level and Flow	Strategic
14067	ST MULLINS	Office of Public Works	Water Level Only	Operational
14100	KYLE SPRING	Environmental Protection Agency	Water Level and Flow	Strategic
14104	GREESMOUNT	Environmental Protection Agency	Water Level and Flow	Strategic
14105	ATHY	Environmental Protection Agency	Water Level and Flow	Strategic
14107	BAYLOUGH BR.	Environmental Protection Agency	Water Level and Flow	Operational
14111	HARRISTOWN BR.	Environmental Protection Agency	Water Level and Flow	Operational
14112	BOGHALL BRIDGE	Environmental Protection Agency	Water Level and Flow	Operational
14114	MOUNTMELICK MILL	Environmental Protection Agency	Water Level and Flow	Operational
14120	CHAPEL STREET	Office of Public Works	Water Level and Flow	Project
14121	MANOR ROAD	Office of Public Works	Water Level and Flow	Project
14122	TURF MARKET	Office of Public Works	Water Level and Flow	Project
14123	COOLROE	Office of Public Works	Water Level and Flow	Project

Station number	Station Name	Responsible Body	Hydrometric Data Available	National classification
15001	ANNAMULT	Office of Public Works	Water Level and Flow	Strategic
15002	JOHN'S BRIDGE	Office of Public Works	Water Level and Flow	Strategic
15003	DININ BR.	Office of Public Works	Water Level and Flow	Strategic
15004	MCMAHONS BR.	Office of Public Works	Water Level and Flow	Strategic
15005	DURROW FT. BR.	Office of Public Works	Water Level and Flow	Strategic
15006	BROWNSBARN	Office of Public Works	Water Level and Flow	Strategic
15007	KILBRICKEN	Office of Public Works	Water Level and Flow	Strategic
15008	BORRIS IN OSSORY	Office of Public Works	Water Level and Flow	Operational
15009	CALLAN	Office of Public Works	Water Level and Flow	Strategic
15010	BALLYBOODIN	Office of Public Works	Water Level and Historic Flow	Strategic
15011	MOUNT JULIET	Office of Public Works	Water Level and Flow	Operational
15012	BALLYRAGGET	Environmental Protection Agency	Water Level and Flow	Strategic
15013	CASTLECOMER	Environmental Protection Agency	Water Level and Flow	Operational
15021	ANNAGH	Environmental Protection Agency	Water Level and Flow	Operational
15027	MOUNTRATH	Environmental Protection Agency	Water Level and Flow	Operational
15041	BALLINFRASE	Environmental Protection Agency	Water Level and Flow	Strategic
15050	BLACKFRIAR S BRIDGE	Office of Public Works	Water Level and Flow	Operational
15053	DERRYDUFF	Environmental Protection Agency	Water Level and Flow	Operational
15104	SYCAMORES	Office of Public Works	Water Level Only	Strategic
15105	ARCHERS GROVE	Office of Public Works	Water Level Only	Strategic
15106	CLOMANTAGH	Environmental Protection Agency	Water Level and Flow	Project
16001	ATHLUMMON	Office of Public Works	Water Level and Flow	Strategic
16002	BEAKSTOWN	Office of Public Works	Water Level and Flow	Strategic
16003	RATHKENNAN	Office of Public Works	Water Level and Flow	Strategic
16004	THURLES	Office of Public Works	Water Level and Flow	Strategic
16005	AUGHNAGROSS	Office of Public Works	Water Level and Flow	Strategic
16006	BALLINACLOGH	Office of Public Works	Water Level and Flow	Strategic
16007	KILLARDRY	Office of Public Works	Water Level and Flow	Strategic
16008	NEW BRIDGE	Office of Public Works	Water Level and Flow	Strategic
16009	CAHER PARK	Office of Public Works	Water Level and Flow	Strategic
16010	ANNER	Office of Public Works	Water Level and Flow	Strategic
16011	CLONMEL	Office of Public Works	Water Level and Flow	Strategic
16012	TAR BR.	Office of Public Works	Water Level and Flow	Strategic
16013	FOURMILEWATER	Office of Public Works	Water Level and Flow	Strategic
16014	SCART	Environmental Protection Agency	Water Level and Flow	Operational

Station number	Station Name	Responsible Body	Hydrometric Data Available	National classification
16020	PORTLAW	Environmental Protection Agency	Water Level and Flow	Strategic
16045	BALLYSHONOCK RESRVR.	Environmental Protection Agency	Water Level and Flow	Strategic
16047	CARROWCLOGH	Environmental Protection Agency	Water Level and Flow	Operational
16051	CLOBANNA	Office of Public Works	Water Level and Flow	Strategic
16061	FIDDOWN	Office of Public Works	Water Level Only	Operational
16062	CARRICK ON SUIR	Office of Public Works	Water Level Only	Strategic
16115	SHEEP'S BR. WEIR	Office of Public Works	Water Level Only	Operational
16120	BALLINACLOGHY	Environmental Protection Agency	Water Level and Flow	Operational
16121	BALLYCULLIN D_S	Environmental Protection Agency	Water Level and Flow	Operational
16123	KILLENAULE	Environmental Protection Agency	Water Level and Flow	Operational
16125	PILTOWN	Office of Public Works	Water Level Only	Operational
16126	CREGG	Environmental Protection Agency	Water Level and Flow	Operational
16127	KILLUSTY BR.	Environmental Protection Agency	Water Level and Flow	Operational
16128	TRAMORE RD RDBT	Office of Public Works	Water Level Only	Operational
16129	JOHN'S BR	Office of Public Works	Water Level Only	Operational
16134	BALLYLOOBY	Environmental Protection Agency	Water Level and Flow	Operational
16136	SMALL BR. (TEMPLEMORE)	Office of Public Works	Water Level and Flow	Operational
16137	NEWCASTLE BR.	Office of Public Works	Water Level Only	Operational
16138	BALLYDONAGH	Office of Public Works	Water Level Only	Operational
16139	KNOCKLOFYTY	Office of Public Works	Water Level and Historic Flow	Operational
16142	BALLYPOREEN	Environmental Protection Agency	Water Level and Flow	Operational
16143	SILVERSPRING	Environmental Protection Agency	Water Level and Flow	Strategic
16144	KILDALTON	Environmental Protection Agency	Water Level and Flow	Strategic
16145	KILMACOW	Environmental Protection Agency	Water Level and Flow	Strategic
16146	ARDFINAN ROAD	Office of Public Works	Water Level Only	Operational
16147	JOYCE'S LANE	Office of Public Works	Water Level Only	Operational
16148	WORKHOUSE BRIDGE	Office of Public Works	Water Level Only	Operational
16149	CLONMEL FFWS BK_UP	Office of Public Works	Water Level Only	Operational
16150	CAHER PK BK_UP	Office of Public Works	Water Level Only	Operational
16151	TAR BR FFWS BK_UP	Office of Public Works	Water Level Only	Operational
16152	FOURMILEWATER FFWS	Office of Public Works	Water Level Only	Operational
16153	NEW BR (SUIR) FFWS	Office of Public Works	Water Level Only	Operational
16154	KILLARDRY FFWS BK_UP	Office of Public Works	Water Level Only	Operational

Station number	Station Name	Responsible Body	Hydrometric Data Available	National classification
16160	ADELPHI QUAY	Office of Public Works	Water Level Only	Operational
17001	KILMACTHOMAS	Environmental Protection Agency	Water Level and Flow	Operational
17002	FOX S CASTLE	Environmental Protection Agency	Water Level and Flow	Strategic
17008	DUNHILL CASTLE BR.	Environmental Protection Agency	Water Level and Flow	Operational
17090	CARRIGAVANTRY	Environmental Protection Agency	Water Level Only	Strategic
18001	MOGEELY	Office of Public Works	Water Level and Flow	Strategic
18002	BALLYDUFF	Office of Public Works	Water Level and Flow	Strategic
18003	KILLAVULLEN	Office of Public Works	Water Level and Flow	Strategic
18004	BALLYNAMONA	Office of Public Works	Water Level and Flow	Strategic
18005	DOWNING BR.	Office of Public Works	Water Level and Flow	Strategic
18009	RIVERVIEW	Environmental Protection Agency	Water Level and Flow	Strategic
18016	DUNCANNON	Environmental Protection Agency	Water Level and Flow	Operational
18019	FR. MURPHYS BR.	Office of Public Works	Water Level and Flow	Operational
18024	GLENAVUDDIG BR.	Office of Public Works	Water Level and Flow	Strategic
18048	DROMCUMMER	Environmental Protection Agency	Water Level and Flow	Strategic
18050	DUARRIGLE	Environmental Protection Agency	Water Level and Flow	Strategic
18053	GLANDALANE	Office of Public Works	Water Level Only	Operational
18055	MALLOW RAILWAY BR	Office of Public Works	Water Level and Flow	Strategic
18056	MALLOW TOWN BR U_S	Office of Public Works	Water Level Only	Operational
18057	MALLOW TOWN BR D_S	Office of Public Works	Water Level Only	Operational
18061	YOUGHAL QUAYS	Office of Public Works	Water Level Only	Operational
18102	CASTLETOWNROCHE	Office of Public Works	Water Level and Flow	Operational
18105	CASTLELANDS	Office of Public Works	Water Level Only	Operational
18106	FERMOY BR U_S	Office of Public Works	Water Level Only	Strategic
18107	FERMOY BR D_S	Office of Public Works	Water Level and Flow	Strategic
18108	ARAGLIN BRIDGE	Office of Public Works	Water Level and Flow	Operational
18109	LOMBARDSTOWN BR.	Office of Public Works	Water Level and Flow	Operational
18110	KILBRIN ROAD	Office of Public Works	Water Level and Flow	Operational
18111	CHURCH STREET	Office of Public Works	Water Level and Flow	Operational
18112	KEALE BRIDGE	Office of Public Works	Water Level and Flow	Operational
18113	AHANE BRIDGE	Office of Public Works	Water Level and Flow	Operational
18114	CLASHMORGAN	Office of Public Works	Water Level and Flow	Operational
18115	JORDANS BRIDGE	Office of Public Works	Water Level and Flow	Operational
18117	FERMOY MILL	Office of Public Works	Water Level Only	Strategic
18118	SHANBALLYMORE	Environmental Protection Agency	Water Level and Flow	Strategic

Station number	Station Name	Responsible Body	Hydrometric Data Available	National classification
18119	BALLYDAHIN	Office of Public Works	Water Level Only	Operational
18120	NURSETOWNBEG	Office of Public Works	Water Level Only	Operational
18121	SHRONEBEHA	Office of Public Works	Water Level Only	Operational
18122	GORTAGEEN	Office of Public Works	Water Level Only	Operational
18123	GREENANE	Office of Public Works	Water Level Only	Operational
18124	FERMOY U/S ROWING	Office of Public Works	Water Level Only	Operational
18125	LONGFIELD'S BRIDGE	Environmental Protection Agency	Water Level and Flow	Strategic
19001	BALLEA	Office of Public Works	Water Level and Flow	Strategic
19011	LEEMOUNT U_S	Electricity Supply Board	Water Level and Flow	Operational
19013	INNISCARRA	Electricity Supply Board	Water Level Only	Operational
19014	DROMCARRA	Electricity Supply Board	Water Level and Flow	Strategic
19015	HEALY S BR.	Electricity Supply Board	Water Level and Flow	Operational
19016	OVENS	Electricity Supply Board	Water Level and Flow	Strategic
19020	BALLYEDMOND	Environmental Protection Agency	Water Level and Flow	Strategic
19027	KILL	Electricity Supply Board	Water Level and Flow	Strategic
19028	DRIPSEY	Electricity Supply Board	Water Level and Flow	Operational
19031	MACROOM	Electricity Supply Board	Water Level and Flow	Strategic
19044	KILMONA	Office of Public Works	Water Level and Flow	Strategic
19045	GOTHIC	Office of Public Works	Water Level and Flow	Operational
19054	BALLYVOURNEY BR.	Office of Public Works	Water Level and Historic Flow	Operational
19055	BALLYMAKEERY BR.	Office of Public Works	Water Level and Flow	Operational
19056	BALLINCOLLY	Office of Public Works	Water Level and Flow	Operational
19057	GLEN PARK	Office of Public Works	Water Level and Flow	Operational
19058	BLACKPOOL RETAIL PARK	Office of Public Works	Water Level and Flow	Operational
19059	GLENNAMOUGHT BR	Office of Public Works	Water Level and Flow	Operational
19068	BALLYCOTTON	Office of Public Works	Water Level Only	Operational
19069	RINGASKIDDY NMCI	Office of Public Works	Water Level Only	Operational
19090	CARRIGADROHID	Electricity Supply Board	Water Level Only	Strategic
19093	INNISCARRA POWER STN.	Electricity Supply Board	Water Level Only	Strategic
19094	INNISCARRA HEADRACE	Office of Public Works	Water Level Only	Operational
19095	CARRIGADROHID HEADRACE	Office of Public Works	Water Level Only	Operational
19100	MACROOM WWTP	Office of Public Works	Water Level Only	Operational
19101	MACROOM TOWN BRIDGE	Office of Public Works	Water Level and Flow	Operational

Station number	Station Name	Responsible Body	Hydrometric Data Available	National classification
19102	WATERWORKS WEIR	Office of Public Works	Water Level and Flow	Project
19103	OVENS BRIDGE	Office of Public Works	Water Level and Flow	Strategic
19104	MORRIS'S BRIDGE	Office of Public Works	Water Level and Flow	Strategic
19105	MUSKERRY	Office of Public Works	Water Level and Flow	Project
19106	COOLDANIEL	Office of Public Works	Water Level and Flow	Project
19107	DRIPSEY BRIDGE	Office of Public Works	Water Level and Flow	Project
19108	BAWNAFINNY BRIDGE	Office of Public Works	Water Level and Flow	Project
19109	INISHCARRA TAILRACE	Office of Public Works	Water Level and Flow	Project
19110	COOLEEN BRIDGE	Office of Public Works	Water Level and Flow	Project
19111	KILLACLUG	Office of Public Works	Water Level and Flow	Project
19112	COOLMUCKY BR	Office of Public Works	Water Level and Flow	Project
19113	COUNTY HALL	Office of Public Works	Water Level Only	Project
19160	CURRACH CLUB	Office of Public Works	Water Level Only	Operational
20001	BANDON	Office of Public Works	Water Level and Flow	Operational
20002	CURRANURE	Office of Public Works	Water Level and Flow	Strategic
20005	BALLYHILTY	Environmental Protection Agency	Water Level and Flow	Strategic
20008	LONG BR. DUNMANWAY	Office of Public Works	Water Level and Flow	Operational
20015	ARDCAHAN BR.	Office of Public Works	Water Level and Historic Flow	Operational
20016	BEALABOY BR.	Office of Public Works	Water Level and Historic Flow	Strategic
20019	CLONAKILTY	Office of Public Works	Water Level and Flow	Strategic
20020	SKIBBEREEN	Office of Public Works	Water Level Only	Operational
20021	SHANNONVALE	Environmental Protection Agency	Water Level and Flow	Strategic
21001	CUMMERAGH WEIR	Environmental Protection Agency	Water Level and Flow	Strategic
21002	COOMHOLA	Environmental Protection Agency	Water Level and Flow	Strategic
21003	BALLYLICKY	Environmental Protection Agency	Water Level and Flow	Strategic
21004	INCHICLOGH	Environmental Protection Agency	Water Level and Flow	Strategic
21018	SNEEM D/S	Office of Public Works	Water Level and Flow	Operational
21019	ADRIGOLE D/S	Environmental Protection Agency	Water Level and Flow	Operational
21020	BRIDGE STREET	Office of Public Works	Water Level and Flow	Operational
21021	KILLOWEN	Office of Public Works	Water Level and Flow	Project
21062	KENMARE PIER	Office of Public Works	Water Level Only	Operational
21075	L.BOFINNA	Environmental Protection Agency	Water Level Only	Strategic

Station number	Station Name	Responsible Body	Hydrometric Data Available	National classification
22001	RIVERVILLE BYPASS	Office of Public Works	Water Level and Historic Flow	Operational
22003	RIVERVILLE	Office of Public Works	Water Level and Flow	Strategic
22005	TORC WEIR	Office of Public Works	Water Level and Flow	Operational
22006	FLESK	Office of Public Works	Water Level and Flow	Strategic
22009	WHITE BRIDGE	Office of Public Works	Water Level and Flow	Strategic
22014	CASTLEISLAND	Environmental Protection Agency	Water Level and Flow	Operational
22016	OLD WEIR BRIDGE	Office of Public Works	Water Level and Historic Flow	Operational
22031	KILLARNEY SW (New)	Environmental Protection Agency	Water Level and Flow	Operational
22033	KILQUANE	Environmental Protection Agency	Water Level and Flow	Operational
22035	LAUNE BR.	Office of Public Works	Water Level and Flow	Strategic
22039	CLYDAGH BR.	Environmental Protection Agency	Water Level and Flow	Strategic
22041	DROMICKBANE	Environmental Protection Agency	Water Level and Flow	Strategic
22049	BARRADUFF	Environmental Protection Agency	Water Level and Flow	Strategic
22061	CASTLEMAINE	Office of Public Works	Water Level Only	Operational
22071	TOMIES PIER	Office of Public Works	Water Level and Historic Flow	Strategic
22082	B.V.M. PARK	Office of Public Works	Water Level Only	Operational
23001	INCH BR.	Office of Public Works	Water Level and Flow	Strategic
23002	LISTOWEL	Office of Public Works	Water Level and Flow	Strategic
23006	NEODATA	Environmental Protection Agency	Water Level and Flow	Strategic
23012	BALLYMULLEN	Office of Public Works	Water Level and Flow	Strategic
23017	TRIENEARAGH	Environmental Protection Agency	Water Level and Flow	Strategic
23030	SLEVEEN MAIN CHANNEL	Office of Public Works	Water Level Only	Operational
23033	SLEVEEN BACK CHANNEL	Office of Public Works	Water Level Only	Operational
23039	SLEVEEN BACK CHANNEL ROTOO PUMP STATION	Office of Public Works	Water Level Only	Operational
23040	SLEVEEN BACK CHANNEL 100m U/S PUMP HOUSE	Office of Public Works	Water Level Only	Operational
23041	SLEVEEN MAIN CHANNEL D/S	Office of Public Works	Water Level Only	Operational
23042	SLEVEEN BACK CHANNEL D/S	Office of Public Works	Water Level Only	Operational
23043	OOLAGH	Environmental Protection Agency	Water Level and Flow	Operational
23044	LISLOOSE	Office of Public Works	Water Level and Flow	Project
23045	BALLYSEEDY	Office of Public Works	Water Level and Flow	Project

Station number	Station Name	Responsible Body	Hydrometric Data Available	National classification
23046	SPRING WATER LANE	Office of Public Works	Water Level and Flow	Project
23047	OAKPARK ROAD	Office of Public Works	Water Level and Flow	Project
23048	ABBEYDORNEY D/S	Office of Public Works	Water Level and Flow	Project
23049	MANOR WEST	Office of Public Works	Water Level and Flow	Project
23050	RIVERSIDE CLOSE	Office of Public Works	Water Level Only	Project
23051	ATHEA D/S	Office of Public Works	Water Level and Flow	Project
23052	ATHEA U/S	Office of Public Works	Water Level Only	Project
23061	FERRY BR.	Office of Public Works	Water Level Only	Operational
23062	BLENNERVILLE	Office of Public Works	Water Level Only	Operational
23063	BALLYARD	Office of Public Works	Water Level Only	Operational
23066	FENIT	Office of Public Works	Water Level Only	Operational
23068	MONEYCASHEN	Office of Public Works	Water Level Only	Operational
24001	CROOM	Office of Public Works	Water Level and Flow	Strategic
24002	GRAY S BR.	Office of Public Works	Water Level and Flow	Operational
24003	GARROOSE	Office of Public Works	Water Level and Flow	Operational
24004	BRUREE	Office of Public Works	Water Level and Flow	Strategic
24005	ATHLACCA	Office of Public Works	Water Level and Flow	Operational
24008	CASTLEROBERTS	Office of Public Works	Water Level and Flow	Strategic
24009	ADARE MANOR	Office of Public Works	Water Level Only	Operational
24011	DEEL BR.	Office of Public Works	Water Level and Flow	Strategic
24012	GRANGE BR.	Office of Public Works	Water Level and Flow	Strategic
24013	RATHKEALE	Office of Public Works	Water Level and Flow	Strategic
24015	DROMCOLLIHER	Environmental Protection Agency	Water Level and Flow	Operational
24022	HOSPITAL	Environmental Protection Agency	Water Level and Flow	Strategic
24023	KNOCKLONG	Environmental Protection Agency	Water Level and Flow	Operational
24029	INCHIROURKE MORE	Environmental Protection Agency	Water Level and Flow	Strategic
24030	DANGANBEG	Environmental Protection Agency	Water Level and Flow	Strategic
24033	BALLYHAHILL	Environmental Protection Agency	Water Level and Flow	Strategic
24034	RIVERSFIELD WEIR	Office of Public Works	Water Level and Flow	Strategic
24045	CANTOGHER	Environmental Protection Agency	Water Level and Flow	Operational
24046	GORTNAGLUGGIN BR.	Environmental Protection Agency	Water Level and Flow	Operational
24047	ROSSBRIEN RLY BR	Office of Public Works	Water Level and Flow	Operational
24061	FERRY BR.	Office of Public Works	Water Level Only	Operational
24062	ADARE QUAY	Office of Public Works	Water Level Only	Operational
24063	LIMERICK DOCK	Office of Public Works	Water Level Only	Operational
24064	FOYNES	Office of Public Works	Water Level Only	Operational
24067	NORMOYLE S BR.	Office of Public Works	Water Level Only	Operational

Station number	Station Name	Responsible Body	Hydrometric Data Available	National classification
24082	ISLANDMORE	Office of Public Works	Water Level and Flow	Strategic
24100	GORTBOY HOTEL	Office of Public Works	Water Level and Flow	Strategic
25001	ANNACOTTY	Office of Public Works	Water Level and Flow	Strategic
25002	BARRINGTON S BR.	Office of Public Works	Water Level and Flow	Strategic
25003	ABINGTON	Office of Public Works	Water Level and Flow	Strategic
25004	NEW BRIDGE	Office of Public Works	Water Level and Flow	Strategic
25005	SUNVILLE	Office of Public Works	Water Level and Flow	Strategic
25006	FERBANE	Office of Public Works	Water Level and Flow	Strategic
25011	MOYSTOWN	Office of Public Works	Water Level and Historic Flow	Strategic
25012	GROODY BRIDGE	Office of Public Works	Water Level Only	Strategic
25013	NEWELL S BR.	Office of Public Works	Water Level and Historic Flow	Strategic
25014	MILLBROOK	Office of Public Works	Water Level and Flow	Strategic
25015	POLLAGH	Office of Public Works	Water Level Only	Strategic
25016	RAHAN	Office of Public Works	Water Level and Flow	Strategic
25017	BANAGHER	Office of Public Works	Water Level and Flow	Strategic
25019	CONICAR	Office of Public Works	Water Level and Historic Flow	Strategic
25020	KILLEEN	Office of Public Works	Water Level and Flow	Strategic
25021	CROGHAN	Office of Public Works	Water Level and Flow	Strategic
25022	SYNGEFIELD	Office of Public Works	Water Level and Flow	Strategic
25023	MILLTOWN [LITTLE BROSNA]	Office of Public Works	Water Level and Historic Flow	Strategic
25024	NEW BRIDGE	Office of Public Works	Water Level and Historic Flow	Strategic
25025	BALLYHOONEY	Office of Public Works	Water Level and Flow	Strategic
25027	GOURDEEN	Office of Public Works	Water Level and Flow	Strategic
25029	CLARIANNA	Office of Public Works	Water Level and Flow	Strategic
25030	SCARRIFF	Office of Public Works	Water Level and Flow	Strategic
25034	ROCHFORD	Environmental Protection Agency	Water Level and Flow	Strategic
25038	TYONE	Environmental Protection Agency	Water Level and Flow	Strategic
25040	ROSCREA	Environmental Protection Agency	Water Level and Flow	Strategic
25044	COOLE	Environmental Protection Agency	Water Level and Flow	Strategic
25046	LISMOYNY	Environmental Protection Agency	Water Level and Flow	Operational
25050	MULLINGAR PUMP HSE.	Office of Public Works	Water Level and Flow	Operational
25051	PORTUMNA	Electricity Supply Board	Water Level and Flow	Operational
25055	ARDNACRUSHA	Electricity Supply Board	Water Level and Flow	Strategic
25056	MEELICK WEIR U/S	Office of Public Works	Water Level Only	Operational

Station number	Station Name	Responsible Body	Hydrometric Data Available	National classification
25058	VICTORIA LOCK	Office of Public Works	Water Level Only	Operational
25061	BALL S BR.	Office of Public Works	Water Level Only	Operational
25070	WHITEBRIDGE	Environmental Protection Agency	Water Level Only	Operational
25072	CAPTAIN S HILL	Environmental Protection Agency	Water Level Only	Strategic
25073	BALLYVALLEY	Electricity Supply Board	Water Level Only	Operational
25074	KILLALOE	Electricity Supply Board	Water Level Only	Operational
25075	PARTEEN WEIR	Electricity Supply Board	Water Level and Flow	Strategic
25085	CLONSINGLE	Office of Public Works	Water Level Only	Operational
25124	BALLYNAGORE	Environmental Protection Agency	Water Level and Flow	Strategic
25149	TULLAMORE	Office of Public Works	Water Level and Flow	Strategic
25201	SILLOGE WELL	Environmental Protection Agency	Water Level and Flow	Strategic
25204	BALLYBOUGHLIN	Environmental Protection Agency	Water Level and Flow	Strategic
25211	CAHERCONLISH	Environmental Protection Agency	Water Level and Flow	Operational
25213	CULLEEN FISH FARM	Office of Public Works	Water Level and Flow	Operational
25301	BRACKNAGH BRIDGE	Office of Public Works	Water Level and Flow	Operational
25308	WATERPARK BRIDGE	Office of Public Works	Water Level and Flow	Strategic
25309	CLONSINGLE BRIDGE	Office of Public Works	Water Level Only	Operational
25321	CLARA BOG TD2	Environmental Protection Agency	Water Level and Flow	Project
25331	TULLAMORE WEIR	Environmental Protection Agency	Water Level and Flow	Strategic
25332	KILGOLAN LOWER	Environmental Protection Agency	Water Level and Flow	Operational
26001	BALLINAMORE	Office of Public Works	Water Level and Flow	Operational
26002	ROOKWOOD	Office of Public Works	Water Level and Flow	Strategic
26004	BOOKALA	Office of Public Works	Water Level and Historic Flow	Operational
26005	DERRYCAHILL	Office of Public Works	Water Level and Flow	Strategic
26006	WILLSBROOK	Office of Public Works	Water Level and Flow	Strategic
26007	BELLAGILL	Office of Public Works	Water Level and Flow	Strategic
26008	JOHNSTON S BR.	Office of Public Works	Water Level and Flow	Strategic
26009	BELLANTRA BR.	Office of Public Works	Water Level and Flow	Strategic
26010	RIVERSTOWN	Office of Public Works	Water Level and Flow	Strategic
26014	BANADA BRIDGE	Office of Public Works	Water Level and Flow	Strategic
26015	CORRASCOFFY	Office of Public Works	Water Level and Flow	Strategic
26017	GILLSTOWN	Office of Public Works	Water Level Only	Operational
26018	BELLAVAHAN	Office of Public Works	Water Level and Historic Flow	Operational
26019	MULLAGH	Office of Public Works	Water Level and Flow	Strategic
26020	ARGAR	Office of Public Works	Water Level and Historic Flow	Strategic

Station number	Station Name	Responsible Body	Hydrometric Data Available	National classification
26021	BALLYMAHON	Office of Public Works	Water Level and Flow	Strategic
26022	KILMORE	Office of Public Works	Water Level and Flow	Strategic
26025	CAMAGH	Office of Public Works	Water Level and Historic Flow	Operational
26027	ATHLONE	Office of Public Works	Water Level and Flow	Operational
26028	SHANNONBRIDGE	Office of Public Works	Water Level Only	Operational
26029	DOWRA	Environmental Protection Agency	Water Level and Flow	Operational
26030	L.ALLEN D/S	Environmental Protection Agency	Water Level and Flow	Operational
26056	MOUNTNUGENT BR.	Environmental Protection Agency	Water Level and Flow	Strategic
26058	BALLINRINK BR.	Environmental Protection Agency	Water Level and Flow	Strategic
26059	FINNEA BR.	Environmental Protection Agency	Water Level and Flow	Strategic
26073	L.ALLEN U_S	Electricity Supply Board	Water Level Only	Operational
26074	BLACKROCK LOCK	Office of Public Works	Water Level Only	Strategic
26075	CUPPANAGH	Office of Public Works	Water Level and Flow	Strategic
26079	LOUGH RINN	Office of Public Works	Water Level Only	Operational
26082	LOUGH DERRAVARAGH	Office of Public Works	Water Level Only	Project
26083	MOUNT NUGENT	Office of Public Works	Water Level Only	Operational
26085	JAMESTOWN	Office of Public Works	Water Level and Flow	Operational
26086	CUIL BR.	Office of Public Works	Water Level and Historic Flow	Strategic
26087	LOMCLOON	Office of Public Works	Water Level Only	Strategic
26088	HODSON S BAY	Office of Public Works	Water Level Only	Strategic
26089	DRUMSNA	Office of Public Works	Water Level Only	Operational
26091	THATCH	Electricity Supply Board	Water Level Only	Operational
26093	DERRY BAY	Office of Public Works	Water Level Only	Strategic
26104	BALLINALACK	Office of Public Works	Water Level and Historic Flow	Operational
26108	BOYLE ABBEY BR.	Office of Public Works	Water Level and Flow	Strategic
26117	BALLYFARNAN	Environmental Protection Agency	Water Level and Flow	Operational
26119	CROGHAN GROTT	Environmental Protection Agency	Water Level Only	Operational
26140	AHASCRAUGH PUMP HSE.	Office of Public Works	Water Level and Flow	Operational
26170	CASTLEPLUNKET	Geological Survey Ireland	Water Level Only	Strategic
26171	LOUGH FUNSHINAGH	Geological Survey Ireland	Water Level Only	Strategic
26172	FORTWILLIAM TURLOUGH	Geological Survey Ireland	Water Level Only	Strategic
26173	BALLYGALDA TURLOUGH	Geological Survey Ireland	Water Level Only	Strategic
26204	BALLYMARTIN	Environmental Protection Agency	Water Level and Flow	Operational
26220	SHRULE BR.	Environmental Protection Agency	Water Level and Flow	Operational

Station number	Station Name	Responsible Body	Hydrometric Data Available	National classification
26221	SUMMER HILL	Environmental Protection Agency	Water Level and Flow	Operational
26229	CLOONAGH	Environmental Protection Agency	Water Level and Flow	Operational
26243	LYSTERFIELD	Environmental Protection Agency	Water Level and Flow	Operational
26252	WHITEHALL	Environmental Protection Agency	Water Level Only	Operational
26305	GLEN LOUGH LOWER	Office of Public Works	Water Level Only	Operational
26307	GLEN LOUGH SLUICE	Office of Public Works	Water Level Only	Operational
26309	MOUNT TALBOT	Environmental Protection Agency	Water Level and Flow	Strategic
26311	KILLEGLAN	Environmental Protection Agency	Water Level and Flow	Strategic
26324	CARRICK ON SHANNON	Office of Public Works	Water Level and Historic Flow	Operational
26328	ROCKINGHAM	Environmental Protection Agency	Water Level and Flow	Operational
26330	BARNE	Environmental Protection Agency	Water Level and Flow	Operational
26331	KILNAGARROW BR	Environmental Protection Agency	Water Level and Flow	Operational
26332	TOBEREEOGUE	Environmental Protection Agency	Water Level and Flow	Strategic
26333	ATHLONE WEIR U/S	Office of Public Works	Water Level and Flow	Operational
26335	TOGHER	Environmental Protection Agency	Water Level and Flow	Operational
26336	KILKERRIN SPRING	Environmental Protection Agency	Water Level and Flow	Operational
26337	CALTRA SPRING	Environmental Protection Agency	Water Level and Flow	Operational
26338	MOUNTBELLEW SPRING	Environmental Protection Agency	Water Level and Flow	Operational
26351	DERRYHOLMES U/S	Office of Public Works	Water Level Only	Operational
26352	DERRYHOLMES D/S	Office of Public Works	Water Level Only	Operational
26353	W.O.P.S RAIL BRIDGE	Office of Public Works	Water Level Only	Operational
26354	BALLINASLOE TOWN	Office of Public Works	Water Level and Flow	Project
26355	BALLINASLOE OLD CHANNEL	Office of Public Works	Water Level Only	Operational
26356	BNM RAHERBEG RAILWAY BRIDGE	Office of Public Works	Water Level Only	Operational
26357	DEERPARK BRIDGE	Office of Public Works	Water Level and Flow	Operational
26358	BUNOWEN BRIDGE	Office of Public Works	Water Level and Flow	Operational
26374	SRAGH BOG	Office of Public Works	Water Level Only	Operational
26402	BALLINASLOE RAIL STATION	Office of Public Works	Water Level Only	Operational
27001	INCH BR.	Office of Public Works	Water Level and Flow	Strategic
27002	BALLYCOREY	Office of Public Works	Water Level and Flow	Strategic
27003	CORROFIN	Office of Public Works	Water Level and Flow	Strategic
27004	CARNELLY	Office of Public Works	Water Level and Flow	Operational
27010	L.INCHQUIN OUTLET	Environmental Protection Agency	Water Level and Flow	Operational

Station number	Station Name	Responsible Body	Hydrometric Data Available	National classification
27011	OWENOGARNEY (RLY) BR.	Office of Public Works	Water Level and Flow	Strategic
27014	CASTLE LAKE O/L	Environmental Protection Agency	Water Level and Flow	Operational
27023	VICTORIA BRIDGE	Office of Public Works	Water Level Only	Strategic
27025	KNOXS BRIDGE	Office of Public Works	Water Level Only	Strategic
27026	TULLA ROAD BR	Office of Public Works	Water Level Only	Strategic
27027	CROSS BR	Environmental Protection Agency	Water Level and Flow	Operational
27028	GAURUS BR	Office of Public Works	Water Level Only	Strategic
27060	DOORA BR	Office of Public Works	Water Level Only	Strategic
27063	CARRIGAHOLT PIER	Office of Public Works	Water Level Only	Operational
27064	CLARECASTLE U/S	Office of Public Works	Water Level Only	Strategic
27065	CLARECASTLE D/S	Office of Public Works	Water Level Only	Strategic
27066	ENNIS BR.	Office of Public Works	Water Level and Flow	Strategic
27068	CLARECASTLE BR.	Office of Public Works	Water Level Only	Strategic
27069	SHANNON AIRPORT	Office of Public Works	Water Level Only	Operational
27073	INCHICRONAN LOUGH	Environmental Protection Agency	Water Level Only	Operational
27075	BALLYCAR LOUGH	Geological Survey Ireland	Water Level Only	Strategic
27076	LOUGH ALEENAUN	Geological Survey Ireland	Water Level Only	Strategic
27092	GAURUS LANDFILL	Office of Public Works	Water Level Only	Operational
28001	ENNISTIMON	Office of Public Works	Water Level and Flow	Strategic
28002	DOONBEG	Office of Public Works	Water Level and Flow	Operational
28011	DOO LOUGH OUTFLOW	Environmental Protection Agency	Water Level and Flow	Operational
28012	LICKEEN OUTFLOW	Environmental Protection Agency	Water Level and Flow	Operational
28060	DOONBEG PIER	Office of Public Works	Water Level Only	Strategic
29001	RATHGORGIN	Office of Public Works	Water Level and Flow	Strategic
29002	RAHASANE TURLOUGH	Office of Public Works	Water Level and Flow	Strategic
29004	CLARINBRIDGE	Office of Public Works	Water Level and Flow	Strategic
29007	CRAUGHWELL	Office of Public Works	Water Level and Flow	Strategic
29009	RUSSAUN	Office of Public Works	Water Level and Flow	Strategic
29010	AGGARD BR.	Office of Public Works	Water Level and Flow	Operational
29011	KILCOLGAN	Office of Public Works	Water Level and Flow	Operational
29014	CAHERFINESKER	Office of Public Works	Water Level and Flow	Operational
29015	ORANMORE BRIDGE	Office of Public Works	Water Level and Flow	Operational
29020	GORTNAMACKAN	Office of Public Works	Water Level and Flow	Operational
29021	BALLYCAHALAN	Office of Public Works	Water Level and Flow	Operational
29022	KILCRIMPLE	Office of Public Works	Water Level Only	Operational

Station number	Station Name	Responsible Body	Hydrometric Data Available	National classification
29023	KILLAFEEEN	Office of Public Works	Water Level Only	Operational
29024	POULATAGGLE	Office of Public Works	Water Level and Flow	Operational
29025	GORT 1B	Office of Public Works	Water Level and Flow	Project
29071	CUTRA	Environmental Protection Agency	Water Level and Historic Flow	Strategic
29072	BLACKROCK	Geological Survey Ireland	Water Level Only	Strategic
29073	COOLE LOUGH	Geological Survey Ireland	Water Level Only	Strategic
29074	CAHERGLASSAUN	Geological Survey Ireland	Water Level Only	Strategic
29075	CARANAVOODAUN	Geological Survey Ireland	Water Level Only	Strategic
29076	TULLA TURLOUGH	Geological Survey Ireland	Water Level Only	Strategic
29077	TERMON SOUTH	Geological Survey Ireland	Water Level Only	Strategic
29078	LABANE	Geological Survey Ireland	Water Level Only	Strategic
30001	CARTRONBOWER	Office of Public Works	Water Level and Historic Flow	Operational
30002	OWER BR.	Office of Public Works	Water Level and Flow	Operational
30004	CORROFIN	Office of Public Works	Water Level and Flow	Strategic
30005	FOXHILL	Office of Public Works	Water Level and Flow	Strategic
30007	BALLYGADDY	Office of Public Works	Water Level and Flow	Strategic
30012	CLAREGALWAY	Environmental Protection Agency	Water Level and Flow	Strategic
30017	CARROWNAGOWER	Office of Public Works	Water Level and Flow	Operational
30020	BALLYHAUNIS	Environmental Protection Agency	Water Level and Flow	Strategic
30021	CHRISTINA S BR.	Environmental Protection Agency	Water Level and Flow	Strategic
30031	CONG WEIR	Office of Public Works	Water Level and Flow	Strategic
30034	CREGAREE	Office of Public Works	Water Level and Historic Flow	Operational
30037	CLOONCORMICK	Office of Public Works	Water Level and Historic Flow	Strategic
30047	KEEL WEIR	Environmental Protection Agency	Water Level and Flow	Operational
30061	WOLFE TONE BR.	Office of Public Works	Water Level and Flow	Strategic
30074	GARRACLOON	Geological Survey Ireland	Water Level Only	Strategic
30075	SHRULE TURLOUGH	Geological Survey Ireland	Water Level Only	Strategic
30076	SKEALOGHAN	Geological Survey Ireland	Water Level Only	Strategic
30077	NEALE CROSS	Geological Survey Ireland	Water Level Only	Strategic
30081	CAHER PIER	Office of Public Works	Water Level Only	Strategic
30082	BURRISCARRA	Office of Public Works	Water Level Only	Strategic
30083	ANNAGHDOWN PIER	Office of Public Works	Water Level Only	Operational
30084	CONG PIER	Office of Public Works	Water Level Only	Operational
30089	ANGLIHAM	Office of Public Works	Water Level Only	Operational

Station number	Station Name	Responsible Body	Hydrometric Data Available	National classification
30098	DANGAN	Office of Public Works	Water Level and Flow	Operational
30099	GALWAY BARRAGE	Office of Public Works	Water Level Only	Operational
30101	OUGHTERARD D/S	Office of Public Works	Water Level and Flow	Operational
30105	GORTGARROW SPRING	Environmental Protection Agency	Water Level and Flow	Strategic
30106	KILMAINE SPRING	Environmental Protection Agency	Water Level and Flow	Strategic
30108	BALLINDINE SPRING	Environmental Protection Agency	Water Level and Flow	Operational
30109	CORRANDULLA SPRING	Environmental Protection Agency	Spot flow measurements	Operational
30110	BUNNATUBBER SPRING	Environmental Protection Agency	Spot flow measurements	Operational
30111	CREGDUFF SPRING	Environmental Protection Agency	Water Level and Flow	Strategic
30112	MID GALWAY	Environmental Protection Agency	Water Level and Flow	Operational
30115	B4 KILGLASSAUN	Office of Public Works	Water Level Only	Operational
31002	CASHLA	Environmental Protection Agency	Water Level and Flow	Strategic
31061	ROSSAVEEL PIER	Office of Public Works	Water Level Only	Operational
31070	GLENICMURRIN L.	Environmental Protection Agency	Water Level Only	Strategic
31072	DERRYCLARE	Environmental Protection Agency	Water Level and Flow	Strategic
31073	NAHASLEAM	Environmental Protection Agency	Water Level Only	Operational
31075	SHANNAGURRAUN	Office of Public Works	Water Level and Flow	Strategic
31076	SHINDILLA	Environmental Protection Agency	Water Level Only	Operational
32004	CLIFDEN	Environmental Protection Agency	Water Level and Flow	Strategic
32006	COOLLOUGHRA	Environmental Protection Agency	Water Level and Flow	Operational
32012	NEWPORT WEIR	Environmental Protection Agency	Water Level and Flow	Strategic
32013	DERRINKEE	Office of Public Works	Water Level and Historic Flow	Operational
32014	OWENMORE BRIDGE	Office of Public Works	Water Level and Flow	Operational
32025	DERRINUMERA	Environmental Protection Agency	Water Level and Flow	Operational
32026	BUNDORRAGHA	Environmental Protection Agency	Water Level and Flow	Operational
32038	DAWROS BR	Environmental Protection Agency	Water Level and Flow	Project
32039	CAROWNRISKY RIVER	Environmental Protection Agency	Water level and Flow	Project
32060	AASLEAGH BRIDGE	Office of Public Works	Water Level and Flow	Operational
32070	L.FEEAGH	Environmental Protection Agency	Water Level Only	Operational
32073	LETTERETTRIM	Environmental Protection Agency	Water Level and Flow	Operational
32076	DOO LOUGH	Environmental Protection Agency	Water Level Only	Operational
33001	GLENAMOY	Environmental Protection Agency	Water Level and Flow	Strategic
33006	SRAHNAMANRAGH	Environmental Protection Agency	Water Level and Flow	Strategic

Station number	Station Name	Responsible Body	Hydrometric Data Available	National classification
33008	BANGOR	Environmental Protection Agency	Water Level and Flow	Project
33010	GLENCASTLE	Environmental Protection Agency	Water Level and Flow	Operational
33011	MUINGERROON SOUTH	Environmental Protection Agency	Water Level and Flow	Operational
33070	CARROWMORE	Environmental Protection Agency	Water Level Only	Strategic
33072	ACCORYMORE	Environmental Protection Agency	Water Level and Flow	Strategic
34001	RAHANS	Office of Public Works	Water Level and Flow	Strategic
34004	BALLYLAHAN	Office of Public Works	Water Level and Flow	Strategic
34005	SCARROWNAGEERAGH	Office of Public Works	Water Level and Historic Flow	Strategic
34007	BALLYCARROON	Office of Public Works	Water Level and Flow	Strategic
34009	CURRAGHBONAUN	Office of Public Works	Water Level and Flow	Strategic
34010	CLOONACANNANA	Office of Public Works	Water Level and Flow	Strategic
34011	GNEEVE BRIDGE	Office of Public Works	Water Level and Flow	Strategic
34013	BANADA	Office of Public Works	Water Level and Flow	Operational
34014	MILL BR.	Office of Public Works	Water Level and Flow	Operational
34018	TURLOUGH	Office of Public Works	Water Level and Flow	Strategic
34021	SWINFORD	Environmental Protection Agency	Water Level and Flow	Operational
34024	KILTIMAGH	Environmental Protection Agency	Water Level and Flow	Operational
34031	CHARLESTOWN	Environmental Protection Agency	Water Level and Flow	Strategic
34060	ENNISCRONE PIER	Office of Public Works	Water Level Only	Operational
34061	BALLINA	Office of Public Works	Water Level Only	Operational
34071	POLLAGH	Office of Public Works	Water Level Only	Operational
34081	PONTOON	Office of Public Works	Water Level Only	Operational
34082	GORTNARABY	Office of Public Works	Water Level Only	Strategic
34083	CORRYOSLA	Office of Public Works	Water Level Only	Strategic
34107	KILLATURLY	Environmental Protection Agency	Water Level and Flow	Strategic
34109	KILLASSER SPRING	Environmental Protection Agency	Water Level and Flow	Strategic
34110	SWINFORD SPRING	Environmental Protection Agency	Spot flow measurements	Operational
34111	BOHOLA SPRING	Environmental Protection Agency	Spot flow measurements	Operational
34113	AUGHMORE SPRING	Environmental Protection Agency	Spot flow measurements	Operational
34114	KEENAGH DEEL BRIDGE	Office of Public Works	Water Level Only	Operational
34115	TULLYLINN	Environmental Protection Agency	Water Level and Flow	Project
34117	MULLENMORE SPRING	Office of Public Works	Water Level and Flow	Project
34118	RICHMOND BR	Office of Public Works	Water Level and Flow	Project
34119	CROSSMOLINA TOWN	Office of Public Works	Water Level Only	Operational

Station number	Station Name	Responsible Body	Hydrometric Data Available	National classification
34120	CROSSMOLINA WEIR U/S	Office of Public Works	Water Level and Flow	Project
34121	CROSSMOLINA WEIR D/S	Office of Public Works	Water Level Only	Project
34122	KNOCKGLASS HOUSE	Office of Public Works	Water Level Only	Project
34123	CHAPEL VIEW	Office of Public Works	Water Level Only	Project
34124	CROSSMOLINA U/S	Office of Public Works	Water Level Only	Project
35001	BALLYNACARROW	Office of Public Works	Water Level and Flow	Strategic
35002	BILLA BR.	Office of Public Works	Water Level and Flow	Strategic
35003	BALLYGRANIA	Office of Public Works	Water Level and Historic Flow	Operational
35004	BIG BRIDGE	Office of Public Works	Water Level and Historic Flow	Strategic
35005	BALLYSADARE	Office of Public Works	Water Level and Flow	Strategic
35007	EASKEY	Environmental Protection Agency	water level only	Project
35011	DROMAHAIR	Office of Public Works	Water Level and Flow	Strategic
35012	NEW BR.	Environmental Protection Agency	Water Level and Flow	Strategic
35018	DRUMCLIFF	Environmental Protection Agency	water level only	Project
35021	KINLOUGH	Environmental Protection Agency	Water Level and Flow	Operational
35028	NEW BR.(MANORHAMILTON)	Office of Public Works	Water Level and Flow	Operational
35029	MULLANALECK BRIDGE	Office of Public Works	Water Level and Historic Flow	Operational
35046	TOBERNALT	Environmental Protection Agency	Water Level and Flow	Strategic
35052	STRACUMMER	Environmental Protection Agency	Water Level and Flow	Project
35053	BOMAHAS	Environmental Protection Agency	Water Level and Flow	Project
35054	GLENANIFF BRIDGE	Environmental Protection Agency	Water Level and Flow	Project
35055	SRAUD	Environmental Protection Agency	Water Level and Flow	Project
35056	MANORHAMILTON SPRING	Environmental Protection Agency	Water Level and Flow	Operational
35071	LAREEN	Office of Public Works	Water Level and Flow	Strategic
35072	TRASGARVE	Environmental Protection Agency	Water Level and Flow	Strategic
35073	L.GILL	Environmental Protection Agency	Water Level and Historic Flow	Strategic
35078	TEMPLEHOUSE DEMESNE	Office of Public Works	Water Level Only	Operational
35087	BALLYNARY	Office of Public Works	Water Level Only	Strategic
36010	BUTLERS BR.	Office of Public Works	Water Level and Flow	Strategic
36011	BELLAHILLAN	Office of Public Works	Water Level and Historic Flow	Strategic

Station number	Station Name	Responsible Body	Hydrometric Data Available	National classification
36012	SALLAGHAN	Office of Public Works	Water Level and Flow	Strategic
36013	DERRESKIT	Office of Public Works	Water Level and Flow	Operational
36015	ANLORE	Office of Public Works	Water Level and Flow	Strategic
36018	ASHFIELD	Office of Public Works	Water Level and Flow	Strategic
36019	BELTURBET	Office of Public Works	Water Level and Flow	Strategic
36020	KILLYWILLIN	Office of Public Works	Water Level and Flow	Strategic
36021	KILTYBARDAN	Office of Public Works	Water Level and Flow	Strategic
36022	AGHACASHLAUN	Office of Public Works	Water Level and Flow	Operational
36023	DERRYHEEN BRIDGE	Office of Public Works	Water Level Only	Operational
36027	BELLAHEADY	Office of Public Works	Water Level and Historic Flow	Strategic
36028	AGHOO	Office of Public Works	Water Level and Historic Flow	Operational
36029	TOMKINROAD BRIDGE	Office of Public Works	Water Level and Historic Flow	Operational
36031	LISDARN	Environmental Protection Agency	Water Level and Flow	Strategic
36036	KILCONNY	Office of Public Works	Water Level Only	Operational
36037	URNEY BR.	Office of Public Works	Water Level and Flow	Operational
36071	GOWLY	Office of Public Works	Water Level and Historic Flow	Operational
36072	NEW BR. [L.DROMORE]	Environmental Protection Agency	Water Level Only	Strategic
36073	WOOD ISLAND	Office of Public Works	Water Level Only	Operational
36075	COOTEHILL	Environmental Protection Agency	Water Level Only	Strategic
36079	CORLEA	Environmental Protection Agency	Water Level and Flow	Strategic
36080	CLOONE	Environmental Protection Agency	Water Level Only	Operational
36083	KILLYKEEN	Office of Public Works	Water Level and Historic Flow	Operational
36084	INNISCONNELL PIER	Office of Public Works	Water Level Only	Operational
36091	BALLINACUR	Office of Public Works	Water Level Only	Operational
36092	CATHALEEN S FALL P.S.	Electricity Supply Board	Water Level and Flow	Strategic
36096	OUGHTER	Environmental Protection Agency	Water Level Only	Operational
36150	SHANTONAGH BR.	Environmental Protection Agency	Water Level and Flow	Operational
36171	FOALIES BR	Office of Public Works	Water Level Only	Operational
37015	LAGUNNA	Environmental Protection Agency	Water Level and Flow	Strategic
37018	CRANNY WEIR	Environmental Protection Agency	Water Level and Flow	Project
37019	CARRICK	Environmental Protection Agency	Water Level and Flow	Project
37020	VALLEY BR.	Environmental Protection Agency	Water Level and Flow	Strategic
37022	BALLYNACARRICK	Environmental Protection Agency	Water Level and Flow	Project

Station number	Station Name	Responsible Body	Hydrometric Data Available	National classification
37023	BALLYBULGAN	Environmental Protection Agency	Water Level and Flow	Project
37071	L.ESKE	Environmental Protection Agency	Water Level and Flow	Strategic
38001	CLONCONWAL FORD	Office of Public Works	Water Level and Flow	Strategic
38002	GWEEDORE	Electricity Supply Board	Water Level and Flow	Operational
38004	CREESLOUGH	Environmental Protection Agency	Water Level and Flow	Strategic
38010	GLENTIES	Office of Public Works	Water Level and Flow	Operational
38071	L.ANURE	Environmental Protection Agency	Water Level and Flow	Strategic
38072	L.ALTAN	Environmental Protection Agency	Water Level and Flow	Strategic
39001	NEW MILLS	Office of Public Works	Water Level and Flow	Strategic
39003	TULLYARVAN	Office of Public Works	Water Level and Flow	Strategic
39006	CLARAGH	Environmental Protection Agency	Water Level and Flow	Strategic
39008	GARTAN BR.	Office of Public Works	Water Level and Flow	Strategic
39009	AGHAWONEY	Office of Public Works	Water Level and Flow	Strategic
39010	ILLIES	Environmental Protection Agency	Water Level and Flow	Strategic
39061	PORT BRIDGE	Office of Public Works	Water Level Only	Operational
40006	CARNDONAGH	Environmental Protection Agency	water level and flow	Project
40008	BALLYLOSKEY	Office of Public Works	Water Level and Flow	Operational
40060	MALIN HEAD	Office of Public Works	Water Level Only	Operational
40070	MEENDORAN	Environmental Protection Agency	Water Level and Flow	Strategic

AN GHNÍOMHAIREACHT UM CHAOMHNÚ COMHSHAOIL

Tá an GCC freagrach as an gcomhshaol a chosaint agus a fheabhsú, mar shócmhainn luachmhar do mhuintir na hÉireann. Táimid tiomanta do dhaoine agus don chomhshaol a chosaint ar thionchar díobhálach na radaíochta agus an truaillithe.

Is féidir obair na Gníomhaireachta a roinnt ina trí phríomhréimse:

Rialáil: *Rialáil agus córais chomhlíonta comhshaoil éifeachtacha a chur i bhfeidhm, chun dea-thorthaí comhshaoil a bhaint amach agus díriú orthu siúd nach mbíonn ag cloí leo.*

Eolas: *Sonraí, eolas agus measúnú ardchaighdeán, spriocdhírthe agus tráthúil a chur ar fáil le leith an chomhshaoil chun bonn eolais a chur faoin gcinnteoireacht.*

Abhcóideacht: *Ag obair le daoine eile ar son timpeallachta glaine, táirgiúla agus dea-chosanta agus ar son cleachtas inbhuanaithe i dtaobh an chomhshaoil.*

I measc ár gcuid freagrachtaí tá:

Ceadúnú

- Gníomhaíochtaí tionscail, dramhaíola agus stórála peitрил ar scála mór;
- Sceitheadh fuíolluisce uirbigh;
- Úsáid shrianta agus scaoileadh rialaithe Orgánach Géinmhodhnaithe;
- Foinsí radaíochta ianúcháin;
- Astaíochtaí gás ceaptha teasa ó thionscal agus ón eitíocht trí Scéim an AE um Thrádáil Astaíochtaí.

Forfheidhmiú Náisiúnta i leith Cúrsaí Comhshaoil

- Iniúchadh agus cigireacht ar shaoráidí a bhfuil ceadúnas acu ón GCC;
- Cur i bhfeidhm an dea-chleachtais a stiúradh i ngníomhaíochtaí agus i saoráidí rialáilte;
- Maoirseacht a dhéanamh ar fhreagrachtaí an údaráis áitiúil as cosaint an chomhshaoil;
- Caighdeán an uisce óil phoiblí a rialáil agus údaruithe um sceitheadh fuíolluisce uirbigh a fhorfheidhmiú
- Caighdeán an uisce óil phoiblí agus phríobháidigh a mheasúnú agus tuairisciú air;
- Comhordú a dhéanamh ar líonra d’eagraíochtaí seirbhíse poiblí chun tacú le gníomhú i gcoinne coireachta comhshaoil;
- An dlí a chur orthu siúd a bhriseann dlí an chomhshaoil agus a dhéanann dochar don chomhshaol.

Bainistíocht Dramhaíola agus Ceimiceáin sa Chomhshaol

- Rialacháin dramhaíola a chur i bhfeidhm agus a fhorfheidhmiú lena n-áirítear saincheisteanna forfheidhmithe náisiúnta;
- Staitisticí dramhaíola náisiúnta a ullmhú agus a fhoilsiú chomh maith leis an bPlean Náisiúnta um Bainistíocht Dramhaíola Guaisí;
- An Clár Náisiúnta um Chosc Dramhaíola a fhorbairt agus a chur i bhfeidhm;
- Reachtaíocht ar rialú ceimiceán sa

timpeallacht a chur i bhfeidhm agus tuairisciú ar an reachtaíocht sin.

Bainistíocht Uisce

- Plé le struchtúir náisiúnta agus réigiúnacha rialachais agus oibriúcháin chun an Chreat-treoir Uisce a chur i bhfeidhm;
- Monatóireacht, measúnú agus tuairisciú a dhéanamh ar chaighdeán aibhneacha, lochanna, uiscí idirchreasa agus cósta, uiscí snámha agus screamhuisce chomh maith le tomhas ar leibhéil uisce agus sreabhadh abhann.

Eolaíocht Aeráide & Athrú Aeráide

- Fardail agus réamh-mheastacháin a fhoilsiú um astaíochtaí gás ceaptha teasa na hÉireann;
- Rúnaíocht a chur ar fáil don Chomhairle Chomhairleach ar Athrú Aeráide agus tacaíocht a thabhairt don Idirphlé Náisiúnta ar Ghníomhú ar son na hAeráide;
- Tacú le gníomhaíochtaí forbartha Náisiúnta, AE agus NA um Eolaíocht agus Beartas Aeráide.

Monatóireacht & Measúnú ar an gComhshaol

- Córais náisiúnta um monatóireacht an chomhshaoil a cheapadh agus a chur i bhfeidhm: teicneolaíocht, bainistíocht sonraí, anailís agus réamhaisnéisiú;
- Tuairiscí ar Staid Thimpeallacht na hÉireann agus ar Tháscairí a chur ar fáil;
- Monatóireacht a dhéanamh ar chaighdeán an aeir agus Treoir an AE i leith Aeir Ghlain don Eoraip a chur i bhfeidhm chomh maith leis an gCoinbhinsiún ar Aerthruailliú Fadraoin Trasteorann, agus an Treoir i leith na Teorann Náisiúnta Astaíochtaí;
- Maoirseacht a dhéanamh ar chur i bhfeidhm na Teorach i leith Torainn Timpeallachta;
- Measúnú a dhéanamh ar thionchar pleananna agus clár beartaithe ar chomhshaol na hÉireann.
- Taighde agus Forbairt Comhshaoil
- Comhordú a dhéanamh ar ghníomhaíochtaí taighde comhshaoil agus iad a mhaoiniú chun brú a aithint, bonn eolais a chur faoin mbeartas agus réitigh a chur ar fáil;
- Comhoibriú le gníomhaíocht náisiúnta agus AE um thaighde comhshaoil.

Cosaint Raideolaíoch

- Monatóireacht a dhéanamh ar leibhéil radaíochta agus nochtheadh an phobail do radaíocht ianúcháin agus do réimsí leictreamaighnéadacha a mheas;
- Cabhrú le pleananna náisiúnta a fhorbairt le haghaidh éigeandálaí ag eascairt as taismí núicléacha;
- Monatóireacht a dhéanamh ar fhorbairtí thar lear a bhaineann le saoráidí núicléacha agus leis an tsábháilteacht raideolaíochta;
- Sainseirbhísí um chosaint ar an radaíocht a sholáthar, nó maoirsiú a dhéanamh ar sholáthar na seirbhísí sin.

Treoir, Ardú Feasachta agus Faisnéis Inrochtana

- Tuairisciú, comhairle agus treoir neamhspleách, fianaise-bhunaithe a chur ar fáil don Rialtas, don tionscal agus don phobal ar ábhair maidir le cosaint comhshaoil agus raideolaíoch;
- An nasc idir sláinte agus folláine, an geilleagar agus timpeallacht ghlan a chur chun cinn;
- Feasacht comhshaoil a chur chun cinn lena n-áirítear tacú le hiompraíocht um éifeachtúlacht acmhainní agus aistriú aeráide;
- Tástáil radóin a chur chun cinn i dtithe agus in ionaid oibre agus feabhsúchán a mholadh áit is gá.

Comhpháirtíocht agus líonrú

- Oibriú le gníomhaireachtaí idirnáisiúnta agus náisiúnta, údaráis réigiúnacha agus áitiúla, eagraíochtaí neamhrialtais, comhlachtaí ionadaíochta agus ranna rialtais chun cosaint comhshaoil agus raideolaíoch a chur ar fáil, chomh maith le taighde, comhordú agus cinnteoireacht bunaithe ar an eolaíocht.

Bainistíocht agus struchtúr na Gníomhaireachta um Chaomhnú Comhshaoil

Tá an GCC á bhainistiú ag Bord lánaimseartha, ar a bhfuil Ard-Stiúrthóir agus cúigear Stiúrthóir. Déantar an obair ar fud cúig cinn d’Oifigí:

- An Oifig um Inbhuanaitheacht i leith Cúrsaí Comhshaoil
- An Oifig Forfheidhmithe i leith Cúrsaí Comhshaoil
- An Oifig um Fhianaise agus Measúnú
- An Oifig um Chosaint ar Radaíocht agus Monatóireacht Comhshaoil
- An Oifig Cumarsáide agus Seirbhísí Corparáideacha

Tugann coistí comhairleacha cabhair don Gníomhaireacht agus tagann siad le chéile go rialta le plé a dhéanamh ar ábhair imní agus le comhairle a chur ar an mBord.



Environmental Protection Agency
An Ghníomhaireacht um Chaomhnú Comhshaoil

Headquarters

**PO Box 3000,
Johnstown Castle Estate
County Wexford, Ireland**

T: +353 53 916 0600

F: +353 53 916 0699

E: info@epa.ie

W: www.epa.ie

LoCall: 1890 33 55 99

Regional Inspectorate

McCumiskey House,
Richview, Clonskeagh Road,
Dublin 14, Ireland

T: +353 1 268 0100

F: +353 1 268 0199

Regional Inspectorate

Inniscarra, County Cork,
Ireland

T: +353 21 487 5540

F: +353 21 487 5545

Regional Inspectorate

Seville Lodge, Callan Road,
Kilkenny, Ireland

T +353 56 779 6700

F +353 56 779 6798

Regional Inspectorate

John Moore Road, Castlebar
County Mayo, Ireland

T +353 94 904 8400

F +353 94 902 1934

Regional Inspectorate

The Glen, Monaghan, Ireland

T +353 47 77600

F +353 47 84987

Regional Offices

The Civic Centre
Church St., Athlone
Co. Westmeath, Ireland
T +353 906 475722

Room 3, Raheen Conference Centre,
Pearse House, Pearse Road
Raheen Business Park, Limerick,
Ireland

T +353 61 224764



Printed on environmentally friendly paper stock