

Guidance Note for Strategic Noise Mapping (04/2025 May Draft)

Part 4: Publication and Reporting

For the
European Communities (Environmental Noise)
Regulations 2018 (amended)

Published May 2025

Overview

- Introduction
- Publication
- Reporting Noise Maps Under END
- EEA Reportnet 3 – Overview
- EEA Reportnet 3 – DF1_5 Extents
- EEA Reportnet 3 – DF4_8 Noise Maps
- EEA Reportnet 3 – Supporting information
- Reporting DF1_5 Extents to EPA
- Reporting DF4_8 Noise Maps to EPA
- Reporting Harmful Effects

Introduction

Introduction

- The objective of this guidance note is to provide practical information, advice and guidance to designated Noise Mapping Bodies on the publication and reporting of strategic noise maps developed under the Environmental Noise Regulations.
- Guidance is issued as applicable only to the publication and reporting of strategic noise maps developed under the Regulations. The guidance updates, revises and replaces the previous Version 3 guidance of January 2025, and the revised Section 10 guidance of October 2017.
- This fourth part of the guidance note provides an overview of the requirements set out within the Regulations, roles and responsibilities of the noise mapping bodies, and sequence of activities to be undertaken during implementation of the Regulations. It provides guidance on the publication and reporting to the EPA of the results of the strategic noise maps, as required under the Regulations.

Introduction

This fourth part of the guidance is to be read alongside the other parts:

- Part 1: Requirements
- Part 2: Calculation Methodology & Noise Modelling
- Part 3: Assessment of Noise Exposure & Harmful Effects

This document should also be read in conjunction with the following:

- European Communities (Environmental Noise) Regulations 2018, S.I. No. 549 of 2018; and
- European Communities (Environmental Noise) (Amendment) Regulations 2021, S.I. No. 663 of 2021.

Introduction

- This Guidance Note should not be considered as a legal document, nor does it purport to provide comprehensive legal advice or guidance on all acoustical matters.
- If, in any circumstance, the recommendations contained in this guidance seem to be at variance with the Directive, or Regulations, then the text of the Directive must be applied in the first instance, or the Regulations in the second. In many situations it may be necessary to seek expert advice and assistance.
- Although every effort has been made to ensure the accuracy of the material contained in this publication, complete accuracy cannot be guaranteed. Neither the Environmental Protection Agency nor the author accepts any responsibility whatsoever for loss or damage occasioned, or claimed to have been occasioned, in part or in full, as a consequence of any person acting, or refraining from acting, as a result of a matter contained in this publication.
- All or part of this publication may be reproduced without further permission, provided the source is acknowledged.

Introduction

- Publication and Reporting
 - Within one month of completing the strategic noise maps, there is a statutory requirement to:
 - Publish the maps and exposure results, and
 - Report them to the Agency
- This part of the Guidance will provide information to support NMBs in their statutory roles when publishing and reporting strategic noise mapping results.

Publication

Publication

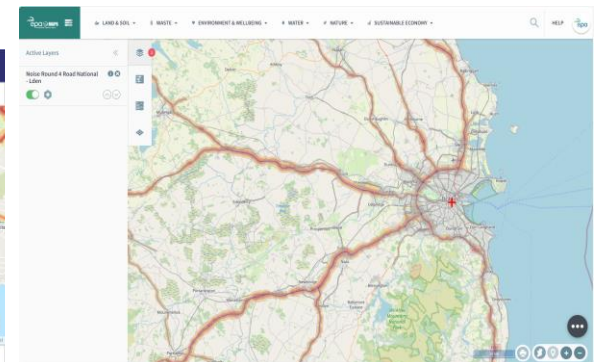
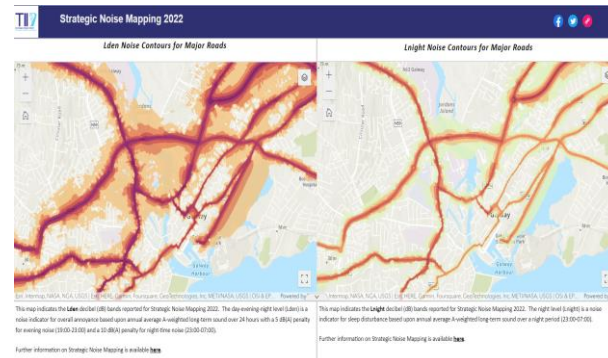
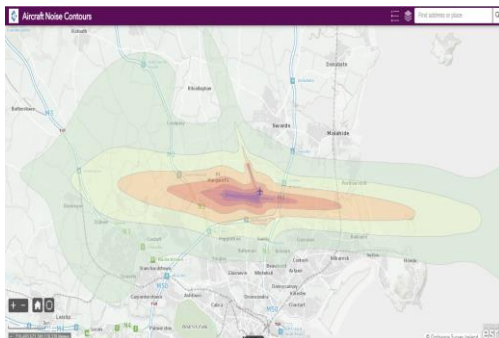
- Following the completion of the strategic noise mapping, the results datasets will include the following:
 - Calculated noise levels at receptors on a regular grid across the area mapped;
 - Calculated noise levels at receptors on the exposed facades of residential buildings;
 - Strategic noise maps showing areas exposed within defined noise bands;
 - Exposure statistics including:
 - No. of dwellings exposed within defined noise bands;
 - No. of people in dwellings exposed within defined noise bands;
 - No. of people in dwellings with special noise insulation exposed within defined noise bands (where known);
 - No. of people in dwellings with a quiet façade exposed within defined noise bands (where known);
 - No. of school and hospital buildings exposed within defined noise bands;
 - Total area exposed within noise bands;
 - No. of people suffering harmful effects due to environmental noise.

Publication

- NMBs must make the results of the strategic noise mapping available to the public, meeting the requirements of the Regulations:
 - Information for the public on strategic noise maps, should be clear and comprehensible, and include a summary setting out the most important points;
 - Dissemination to the public should be via any appropriate means, including through the use of available information technologies;
 - Should be in accordance with relevant Union legislative acts, in particular, Directives on public access to environmental information (Directive 2003/4/EC) and INSPIRE (Directive 2007/2/EC), and in conformity with the Third and Fourth Schedule to the END (Directive 2002/49/EC).

Publication

- Guidance on publication of strategic noise maps:
 - Ideally, mapping results are available via an interactive mapping website, such as:
 - EPA: <https://gis.epa.ie/EPAMaps/>
 - TII: <https://www.tii.ie/technical-services/environment/noise-maps/>
 - FCC: <https://www.fingal.ie/news/2022-aircraft-noise-exposure-contour-maps-now-available>
 - Or alternatively as a series of PDF maps.



Publication

- EPA recommended colour bands for presentation of noise contour results set out in Section 13 of *Guidance Note for Strategic Noise Mapping Part 2: Calculation Methodology & Noise Modelling*

Band	Color	R	G	B	C	M	Y	K	Hex
>30-35	dark blue-green	130	166	173	53	23	28	4	#82A6AD
>35-40	Blue-green	160	186	191	42	18	21	2	#A0BABF
>40-45	light blue-green	184	214	209	33	6	19	0	#B8D6D1
>45-50	light green	206	228	204	24	1	25	0	#CEE4CC
>50-55	yellowish green	226	242	191	16	0	33	0	#E2F2BF
>55-60	light orange	243	198	131	5	26	54	0	#F3C683
>60-65	orange	232	126	77	3	61	71	0	#E87E4D
>65-70	dark orange	205	70	62	15	84	74	3	#CD463E
>70-75	magenta	161	26	77	32	98	47	14	#A11A4D
>75-80	purple	117	8	92	58	100	26	17	#75085C
>80	dark purple	67	10	74	79	100	37	39	#430A4A

From	To	Colour & style
0	40	
40	45	
45	50	
50	55	
55	60	
60	65	
65	70	
70	75	
75	99	

Publication

- The noise maps should be accompanied by additional information:
 - Summary of exposure and harmful effects statistics
 - Suitable supporting information and explanation relating to:
 - Why the maps were produced
 - How the maps were developed
 - The effects of long term exposure to environmental noise
 - How the noise maps will inform the noise action plan

Reporting Noise Maps Under END


Reporting Noise Maps Under END

- Directive 2002/49/EC (END)
 - Annex VI: Data to be sent to the Commission
 - Sets out mandatory legal requirements
 - Used as the basis for reporting datasets to EEA for R1 to R3
- Regulation (EU) 2019/1010
 - The Commission, assisted by EEA, shall develop a mandatory digital information exchange mechanism to share strategic noise maps and action plans under Article 10(2) (of the END)
- Commission Implementing Decision (EU) 2021/1967
 - Mandatory requirement to use EEA Reportnet as the mandatory data repository for submission of data referred to in the END
- European Communities (Environmental Noise) Regulations 2018 (as amended 2021)
 - EPA is to submit to the Commission the information required under Article 10(2) of the END

EEA Reportnet 3 - Overview

EEA Reportnet 3 - Overview

🔒 <https://www.eionet.europa.eu/reportnet/docs/noise>

 **Eionet Portal**

🏠 Eionet > Reportnet > docs > **Noise**

Navigation

- > TEST
- > PROD
- > GovReg
- > Newsletter
- > **Noise**
 - Templates
 - Data Model Documentation
 - UMLs
 - Guidelines
 - Videos
 - Reporting Examples
 - Validation Rules
 - Reference datasets
 - Archive

Noise

There are currently no items in this folder.

- RSS feed

- <https://www.eionet.europa.eu/reportnet/docs/noise>

EEA Reportnet 3 - Overview

- Reporting to EEA is undertaking using a series of interconnected reports covering different topic areas relevant to the END, called dataflows
- Dataflow packages are as follows:
 - Noise Sources (DF1_5):
 - Extents and location of major roads, major railways, major airports and agglomerations
 - Competent Authority (DF2):
 - Competent authorities and bodies responsible for implementing the END including noise maps, action plans and quiet areas
 - Limit Values (DF3):
 - Provision of any national or local noise limit values in place

EEA Reportnet 3 - Overview

- Dataflow packages (continued):
 - Strategic Noise Maps (DF4_8):
 - Exposure data: estimated number of people living in areas exceeding the END noise reporting thresholds
 - Noise contours: noise contour maps present spatial extent of noise levels for different noise indicators
 - Noise Control Programmes (DF6_9):
 - Noise-control programmes that have been carried out in the past and noise-measures in place
 - Noise Action Plans and Quiet Areas (DF7_10):
 - Action plans designed to reduce and manage noise problems and its effects;
 - Protection and preservation of quiet areas in agglomerations or in open country.

EEA Reportnet 3 - Overview

- R4 Strategic Noise Mapping requirements:
 - DF1_5: Extents and location of major roads, major railways, major airports and agglomerations included within R4 noise mapping
 - DF4_8 Results of R4 Strategic Noise Maps:
 - Exposure data: estimated number of people living in areas exceeding the END noise reporting thresholds
 - Noise contours: noise contour maps present spatial extent of noise levels for different noise indicators
- Deadline for R4 DF4_8 is 31st December 2022

EEA Reportnet 3 - Overview

- Reportnet 3 is an electronic reporting mechanism
- It combines the requirements of the END and INSPIRE
- Fundamentally it is a data model documentation of a series of related datasets
 - Data Model Documentation
 - 221 pages covering fundamental and all dataflows

> Noise

Templates

Data Model Documentation

UMLs

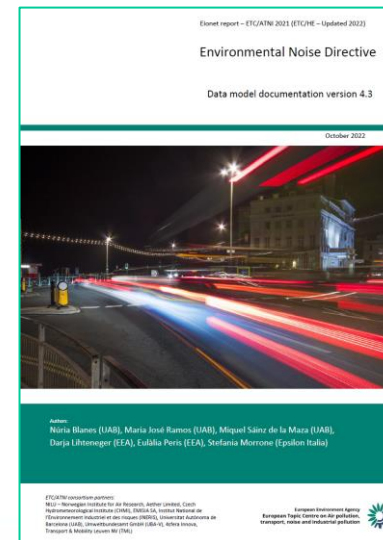
Guidelines

Videos

Reporting Examples

Validation Rules

Reference datasets



EEA Reportnet 3 – DF1_5 Extents

- ## > Noise

Data Model Documentation

UMLs

Guidelines

Videos

Reporting Examples

Validation Rules

Reference datasets

The UMLs show the attributes that need to be reported in each dataflow. The UMLs were used to develop the encoding templates in Geopackage and the excel templates.

UMLs DF2

Updated October 2022

UMLs DF3

UMLs DF4_8

UMLs DF6 9

UMLs DF7 10

UMLs DF7_10 (Quiet Areas)

EEA Reportnet 3 - DF1_5 - Templates

- Template GeoPackages have been prepared for reporting of each dataflow
 - DF1_5 GeoPackage templates for agglomerations, major roads, major railways and major airports
 - CRS for templates is EPSG:3035 (ETRS89 geographical coordinates)
 - Templates align with documentation, guidelines and validation rules
 - Highly recommended to use EEA templates for reporting

> Noise

> Templates

DF1_5

DF2

DF3

DF4_8

DF6_9

DF7_10

Data Model

Documentation

DF1_5

Reporting of agglomerations, major airports, major railways and major roads. This is a working draft from June 2021 and it is meant for information only to the members of the Eionet network.

AgglomerationSource

Geopackage template March 2022; empty rows have been deleted

MajorAirportSource

Geopackage template March 2022; empty rows have been deleted

MajorRailwaySource

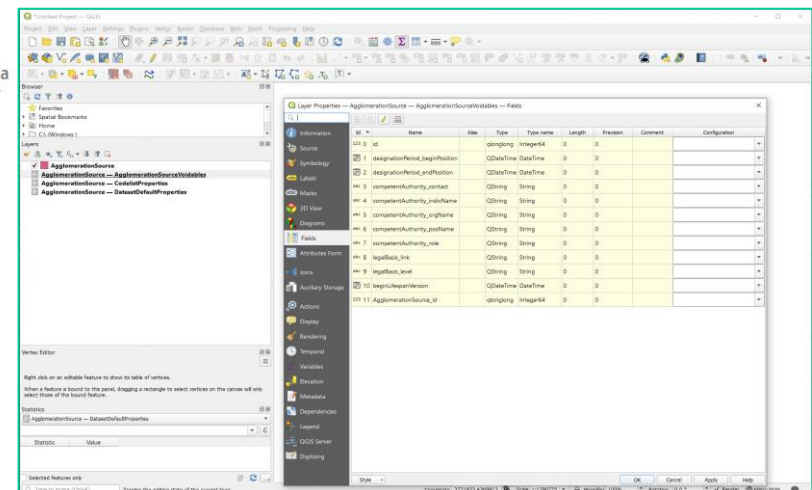
Geopackage template March 2022; empty rows have been deleted

MajorRoadSource

Geopackage template March 2022; empty rows have been deleted

AgglomerationSource_versionB

Geopackage template October 2021. This template was created for ESRI users. The attribute "agglomerationName_localNameLanguage" was changed to "agglomerationName_localLanguage".



EEA Reportnet 3 - DF1_5 - Guidelines

- Several guidance documents have been produced on specific aspects:
 - Reporting guidelines Noise Sources (DF1_5)
 - Creating unique thematic identifiers for the END data model
 - GeoPackage Encoding Rule for Environmental Noise Directive Reporting Data
 - Creating INSPIRE external unique object identifiers in the scope of the END reporting data

> Noise

Templates

Data Model

Documentation

UMLs

Guidelines

Videos

Reporting Examples

Validation Rules

Reference datasets

Guidelines

This page provides relevant guidance documents for the reporting of Noise dataflows to be submitted under the Environmental Noise Directive (END).

 [Creating INSPIRE external unique object identifiers in the scope of the END reporting data](#)

 [Creating unique thematic identifiers for the END data model](#)


 [GeoPackage Encoding Rule for Environmental Noise Directive Reporting Data](#)

 [Reporting guidelines Noise Sources \(DF1_5\)](#)

Version 1.2 June 2022

 [Reporting guidelines Strategic Noise Maps \(DF4_8\)](#)

Updated guidelines version 1.2 October 2022.

 [Schema information for noise action plans \(DF7_10\)](#)

Excel file with information about fields and tables within the noise action plan templates (June 2022)



EEA Reportnet 3 - DF1_5 - Videos

- The EEA have prepared video presentations stepping through data transformation and reporting:
 - Five guidance videos have been prepared for DF1_5
 - Transformation examples help migrate SHP to GeoPackage using Hale Studio

> Noise

Templates

Data Model

Documentation

UMLs

Guidelines

Videos

Reporting Examples

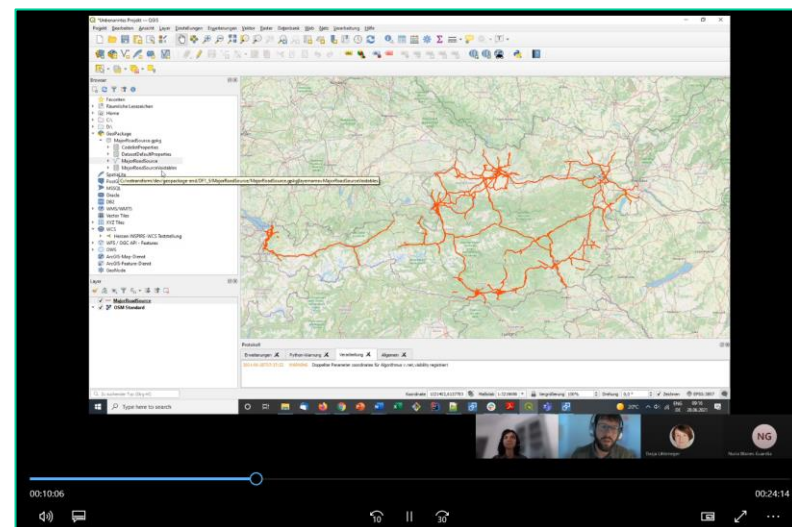
Validation Rules

Reference datasets

Videos

This page comprises several videos aimed at supporting the reporting of dataflows under the Environmental Noise Directive (END)

- Reporting DF1_5 in Reportnet 3
- Data Transformation Example for Major Roads (DF1_5)
- Data Transformation Example for Major Railways (DF1_5)
- Data Transformation Example for Major Airports (DF1_5)
- Data Transformation Example for Agglomerations (DF1_5)
- Data Transformation Example for Major Roads (DF4_8)
- Data Transformation Example for Major Railways (DF4_8)
- Data Transformation Example for Major Airports (DF4_8)
- Data Transformation Example for Agglomerations (DF4_8)
- Reporting DF4_8 in Reportnet 3
- Data Transformation Example for Quiet Areas (DF7_10)
- Data Transformation Example for Coverage Area (DF7_10)



EEA Reportnet 3 - DF1_5; Reporting Examples

- DF1_5 noise sources example reporting dataset
- Contains four GeoPackages
 - **WARNING: Examples may pre-date the latest data model documentation**

> Noise

Templates

Data Model

Documentation

UMLs

Guidelines

Videos

> Reporting Examples

Noise Sources
(DF1_5)

Validation Rules

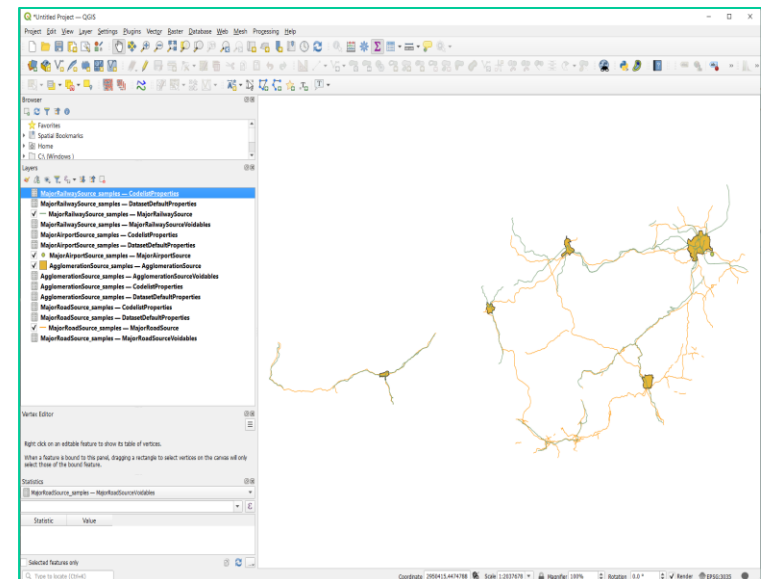
Reference datasets

Reporting Examples

This folder contains sample data aiming at exemplifying how the Geopackages files should be built up to report noise data under the Environmental Noise Directive (END). The sample data used is fictitious and has been created specifically for the purpose of showing data reporting best practices.

There are currently no items in this folder.

- RSS feed



EEA Reportnet 3 - DF1_5 - Validation Rules

- EEA Reportnet portal runs a series of data validation checks on data when it is uploaded
- The rules for DF1_5 are available within a spreadsheet

> Noise

Templates

Data Model Documentation

UMLs

Guidelines

Videos

Reporting Examples

Validation Rules

Reference datasets

Validation Rules

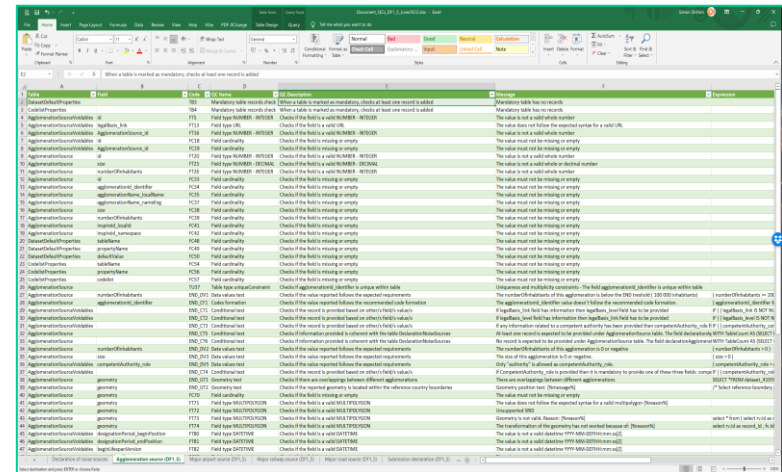
This file contains the complete list of validations applied in all the data schemas of each dataflow.

Validation Rules for DF4_8

This file contains the complete list of validations applied in all the data schemas of the dataflow strategic noise maps (DF4_8). Update July 2022.

Validation Rules for DF1_5

This file contains the complete list of validations applied in all the data schemas of the dataflow Noise Sources (DF1_5). Version 1.2 June 2022



ID	Name	Description	Formula
001	Validation Rule 001	Check if the value is not empty	ISBLANK(A1)
002	Validation Rule 002	Check if the value is a number	ISNUMBER(A1)
003	Validation Rule 003	Check if the value is a date	ISDATE(A1)
004	Validation Rule 004	Check if the value is a text	ISTEXT(A1)
005	Validation Rule 005	Check if the value is a color	ISCOLOR(A1)
006	Validation Rule 006	Check if the value is a length	LEN(A1)
007	Validation Rule 007	Check if the value is a width	WIDTH(A1)
008	Validation Rule 008	Check if the value is a height	HEIGHT(A1)
009	Validation Rule 009	Check if the value is a volume	VOLUME(A1)
010	Validation Rule 010	Check if the value is a weight	WEIGHT(A1)
011	Validation Rule 011	Check if the value is a temperature	TEMPERATURE(A1)
012	Validation Rule 012	Check if the value is a pressure	PRESSURE(A1)
013	Validation Rule 013	Check if the value is a speed	SPEED(A1)
014	Validation Rule 014	Check if the value is a time	TIME(A1)
015	Validation Rule 015	Check if the value is a frequency	FREQUENCY(A1)
016	Validation Rule 016	Check if the value is a power	POWER(A1)
017	Validation Rule 017	Check if the value is a energy	ENERGY(A1)
018	Validation Rule 018	Check if the value is a force	FORCE(A1)
019	Validation Rule 019	Check if the value is a torque	TORQUE(A1)
020	Validation Rule 020	Check if the value is a moment	MOMENT(A1)
021	Validation Rule 021	Check if the value is a flux	FLUX(A1)
022	Validation Rule 022	Check if the value is a density	DENSITY(A1)
023	Validation Rule 023	Check if the value is a viscosity	VISCOSITY(A1)
024	Validation Rule 024	Check if the value is a conductivity	CONDUCTIVITY(A1)
025	Validation Rule 025	Check if the value is a permeability	PERMEABILITY(A1)
026	Validation Rule 026	Check if the value is a refractive index	REFRACTIVE_INDEX(A1)
027	Validation Rule 027	Check if the value is a absorption coefficient	ABSORPTION_COEFFICIENT(A1)
028	Validation Rule 028	Check if the value is a scattering coefficient	SCATTERING_COEFFICIENT(A1)
029	Validation Rule 029	Check if the value is a transmission coefficient	TRANSMISSION_COEFFICIENT(A1)
030	Validation Rule 030	Check if the value is a reflection coefficient	REFLECTION_COEFFICIENT(A1)
031	Validation Rule 031	Check if the value is a loss coefficient	LOSS_COEFFICIENT(A1)
032	Validation Rule 032	Check if the value is a gain coefficient	GAIN_COEFFICIENT(A1)
033	Validation Rule 033	Check if the value is a efficiency	EFFICIENCY(A1)
034	Validation Rule 034	Check if the value is a accuracy	ACCURACY(A1)
035	Validation Rule 035	Check if the value is a precision	PRECISION(A1)
036	Validation Rule 036	Check if the value is a resolution	RESOLUTION(A1)
037	Validation Rule 037	Check if the value is a contrast	CONTRAST(A1)
038	Validation Rule 038	Check if the value is a saturation	SATURATION(A1)
039	Validation Rule 039	Check if the value is a brightness	BRIGHTNESS(A1)
040	Validation Rule 040	Check if the value is a sharpness	SHARPNESS(A1)
041	Validation Rule 041	Check if the value is a focus	FOCUS(A1)
042	Validation Rule 042	Check if the value is a depth of field	DEPTH_OF_FIELD(A1)
043	Validation Rule 043	Check if the value is a aperture	APERTURE(A1)
044	Validation Rule 044	Check if the value is a shutter speed	SHUTTER_SPEED(A1)
045	Validation Rule 045	Check if the value is a ISO speed	ISO_SPEED(A1)
046	Validation Rule 046	Check if the value is a white balance	WHITE_BALANCE(A1)
047	Validation Rule 047	Check if the value is a exposure mode	EXPOSURE_MODE(A1)
048	Validation Rule 048	Check if the value is a image format	IMAGE_FORMAT(A1)
049	Validation Rule 049	Check if the value is a file size	FILE_SIZE(A1)
050	Validation Rule 050	Check if the value is a file type	FILE_TYPE(A1)

EEA Reportnet 3 – DF4_8 Noise Maps

- ## > Noise

Data Model Documentation

UMLs

Guidelines

Videos

Reporting Examples

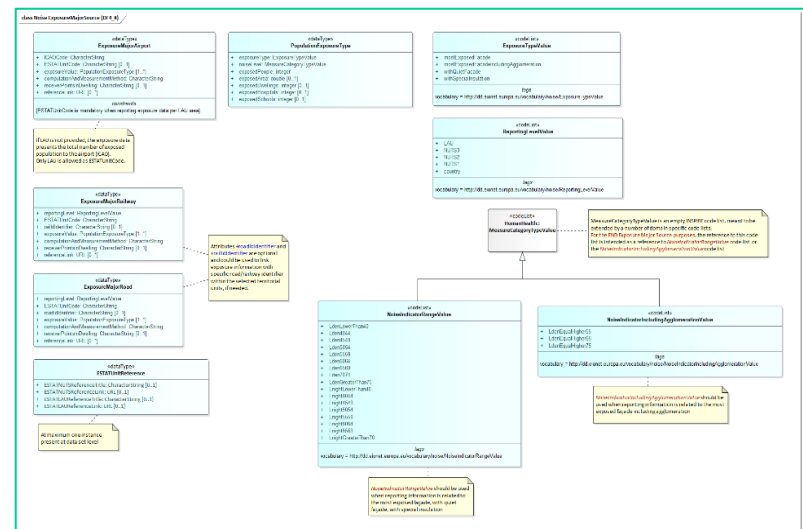
Validation Rules

Reference datasets

The UMLs show the attributes that need to be reported in each dataflow. The UMLs were used to develop the encoding templates in Geopackage and the excel templates.

Updated October 2022

UMLs DF7 10 (Quiet Areas)



EEA Reportnet 3 - DF4_8 - Templates

- Template GeoPackages have been prepared for reporting of each dataflow
 - DF4_8 GeoPackage templates for agglomerations, major roads, major railways and major airports are available in polygon and polyline format
 - DF4_8 spreadsheet templates are available for reporting exposure statistics
 - CRS for templates is EPSG:3035 (ETRS89 geographical coordinates)
 - Templates align with documentation, guidelines and validation rules
 - Highly recommended to use EEA **polygon** templates for reporting

> Noise

> Templates

DF1_5

DF2

DF3

DF4_8

DF6_9

DF7_10

Data Model Documentation

DF4_8

Geopackage templates for strategic noise mapping.

Agglomerations_StrategicNoiseMaps

Geopackage template July 2022; empty rows have been deleted;

MajorAirports_StrategicNoiseMaps

Geopackage template July 2022; new codelists added; corrected field fid;

MajorRailways_StrategicNoiseMaps

Geopackage template July 2022; new codelists added; corrected field fid;

MajorRoads_StrategicNoiseMaps

Geopackage template July 2022; new codelists added; corrected field fid;

Agglomerations_StrategicNoiseMaps_LineString

Geopackage template for lines July 2022; empty rows have been deleted; corrected field fid;

MajorAirports_StrategicNoiseMaps_LineString

Geopackage template for lines July 2022; new codelists added;

MajorRailways_StrategicNoiseMaps_LineString

Geopackage template for lines July 2022; new codelists added;

MajorRoads_StrategicNoiseMaps_LineString

Geopackage template for lines July 2022; new codelists added;

Agglomerations_Exposure_Excel_SupportTool

Support tool for preparing exposure data in geopackage;

MajorAirports_Exposure_Excel_SupportTool

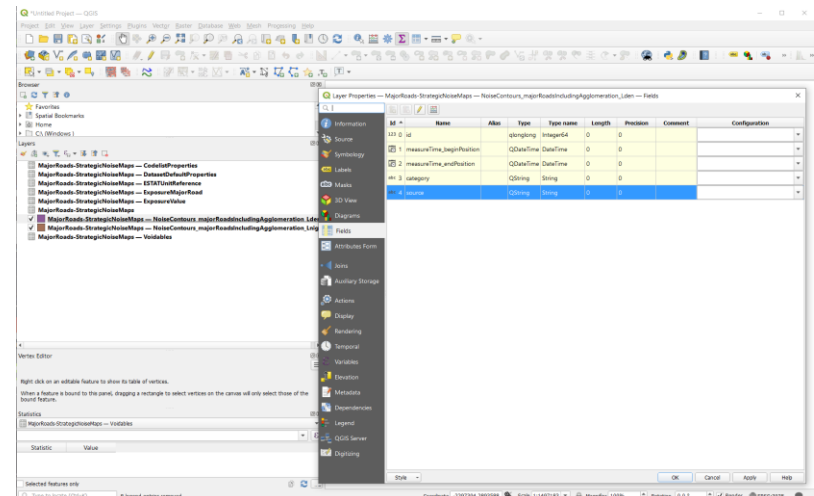
Support tool for preparing exposure data in geopackage; update July 2022;

MajorRailways_Exposure_Excel_SupportTool

Support tool for preparing exposure data in geopackage; update July 2022;

MajorRoads_Exposure_Excel_SupportTool

Support tool for preparing exposure data in geopackage; update July 2022;



EEA Reportnet 3 - DF4_8 - Guidelines

- Several guidance documents have been produced on specific aspects:
 - Reporting guidelines Strategic Noise Maps (DF4_8)
 - Creating unique thematic identifiers for the END data model
 - GeoPackage Encoding Rule for Environmental Noise Directive Reporting Data
 - Creating INSPIRE external unique object identifiers in the scope of the END reporting data

> Noise

Templates

Data Model
Documentation

UMLs

Guidelines

Videos

Reporting Examples

Validation Rules

Reference datasets

Guidelines

This page provides relevant guidance documents for the reporting of Noise dataflows to be submitted under the Environmental Noise Directive (END).


 [Creating INSPIRE external unique object identifiers in the scope of the END reporting data](#)

 [Creating unique thematic identifiers for the END data model](#)

 [GeoPackage Encoding Rule for Environmental Noise Directive Reporting Data](#)

 [Reporting guidelines Noise Sources \(DF1_5\)](#)

Version 1.2 June 2022

 [Reporting guidelines Strategic Noise Maps \(DF4_8\)](#)

Updated guidelines version 1.2 October 2022.

 [Schema information for noise action plans \(DF7_10\)](#)

Excel file with information about fields and tables within the noise action plan templates (June 2022)



EEA Reportnet 3 - DF4_8 - Videos

- The EEA have prepared video presentations stepping through data transformation and reporting:
 - Five guidance videos have been prepared for DF4_8
 - Transformation examples help migrate SHP to GeoPackage using Hale Studio

> Noise

Templates

Data Model

Documentation

UMLs

Guidelines

Videos

Reporting Examples

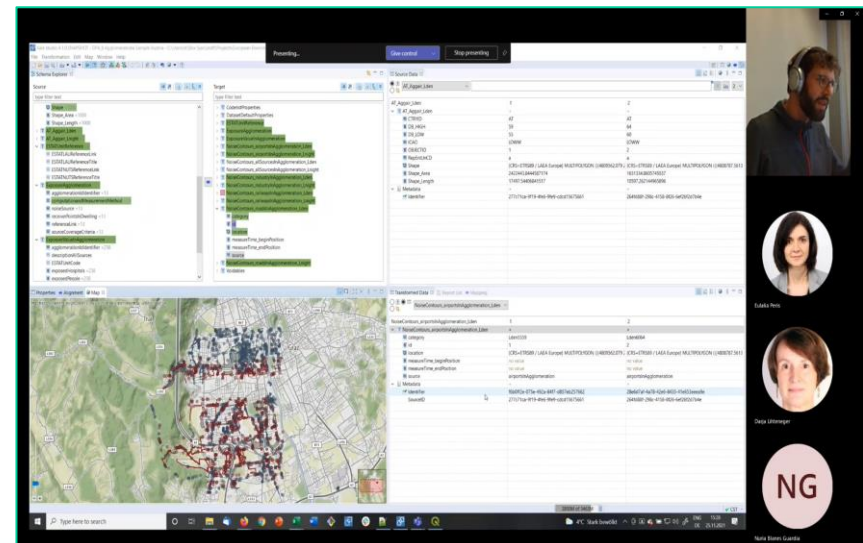
Validation Rules

Reference datasets

Videos

This page comprises several videos aimed at supporting the reporting of dataflows under the Environmental Noise Directive (END)

- Reporting DF1_5 in Reportnet 3
- Data Transformation Example for Major Roads (DF1_5)
- Data Transformation Example for Major Railways (DF1_5)
- Data Transformation Example for Major Airports (DF1_5)
- Data Transformation Example for Agglomerations (DF1_5)
- Data Transformation Example for Major Roads (DF4_8)
- Data Transformation Example for Major Railways (DF4_8)
- Data Transformation Example for Major Airports (DF4_8)
- Data Transformation Example for Agglomerations (DF4_8)
- Reporting DF4_8 in Reportnet 3
- Data Transformation Example for Quiet Areas (DF7_10)
- Data Transformation Example for Coverage Area (DF7_10)



EEA Reportnet 3 - DF4_8; Reporting Examples

- DF4_8 strategic noise maps example reporting dataset
- Contains four GeoPackages
 - **WARNING: Examples may pre-date the latest data model documentation**

› Noise

Templates

Data Model Documentation

UMLs

Guidelines

Videos

› Reporting Examples

Noise Sources (DF1_5)

Strategic Noise Maps (DF4_8)

Validation Rules

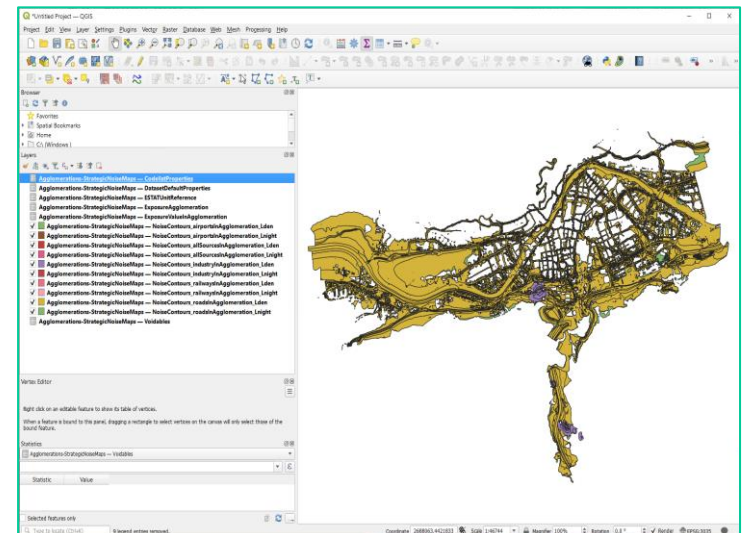
Reference datasets

Strategic Noise Maps (DF4_8)

This folder contains sample data aiming at exemplifying how the DF4_8 Geopackages files should be built up to report noise data under the Environmental Noise Directive (END). The sample data used is fictitious and has been created specifically for the purpose of showing data reporting best practices.

Sample Data Strategic Noise Maps (DF4_8)

• RSS feed



EEA Reportnet 3 - DF4_8 - Validation Rules

- EEA Reportnet portal runs a series of data validation checks on data when it is uploaded
- The rules for DF4_8 are available within a spreadsheet

> Noise

Templates

Data Model

Documentation

UMLS

Guidelines

Videos

Reporting Examples

Validation Rules

Reference datasets

Validation Rules

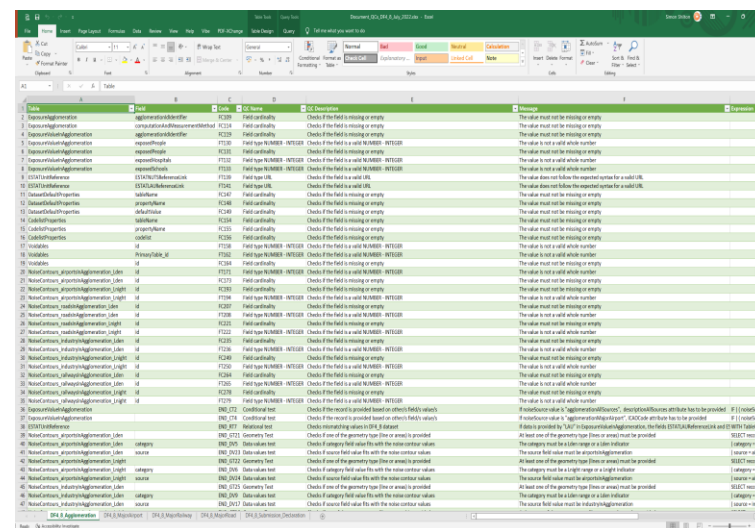
This file contains the complete list of validations applied in all the data schemas of each dataflow.

Validation Rules for DF4_8

This file contains the complete list of validations applied in all the data schemas of the dataflow strategic noise maps (DF4_8). Update July 2022.

Validation Rules for DF1_5

This file contains the complete list of validations applied in all the data schemas of the dataflow Noise Sources (DF1_5). Version 1.2 June 2022



ID	Name	Category	Description
1	ReportnetValidationRule	Validation	Checks if the field is missing or empty
2	ReportnetValidationRule	Validation	Checks if the field is missing or empty
3	ReportnetValidationRule	Validation	Checks if the field is missing or empty
4	ReportnetValidationRule	Validation	Checks if the field is missing or empty
5	ReportnetValidationRule	Validation	Checks if the field is missing or empty
6	ReportnetValidationRule	Validation	Checks if the field is missing or empty
7	ReportnetValidationRule	Validation	Checks if the field is missing or empty
8	ReportnetValidationRule	Validation	Checks if the field is missing or empty
9	ReportnetValidationRule	Validation	Checks if the field is missing or empty
10	ReportnetValidationRule	Validation	Checks if the field is missing or empty
11	ReportnetValidationRule	Validation	Checks if the field is missing or empty
12	ReportnetValidationRule	Validation	Checks if the field is missing or empty
13	ReportnetValidationRule	Validation	Checks if the field is missing or empty
14	ReportnetValidationRule	Validation	Checks if the field is missing or empty
15	ReportnetValidationRule	Validation	Checks if the field is missing or empty
16	ReportnetValidationRule	Validation	Checks if the field is missing or empty
17	ReportnetValidationRule	Validation	Checks if the field is missing or empty
18	ReportnetValidationRule	Validation	Checks if the field is missing or empty
19	ReportnetValidationRule	Validation	Checks if the field is missing or empty
20	ReportnetValidationRule	Validation	Checks if the field is missing or empty
21	ReportnetValidationRule	Validation	Checks if the field is missing or empty
22	ReportnetValidationRule	Validation	Checks if the field is missing or empty
23	ReportnetValidationRule	Validation	Checks if the field is missing or empty
24	ReportnetValidationRule	Validation	Checks if the field is missing or empty
25	ReportnetValidationRule	Validation	Checks if the field is missing or empty
26	ReportnetValidationRule	Validation	Checks if the field is missing or empty
27	ReportnetValidationRule	Validation	Checks if the field is missing or empty
28	ReportnetValidationRule	Validation	Checks if the field is missing or empty
29	ReportnetValidationRule	Validation	Checks if the field is missing or empty
30	ReportnetValidationRule	Validation	Checks if the field is missing or empty
31	ReportnetValidationRule	Validation	Checks if the field is missing or empty
32	ReportnetValidationRule	Validation	Checks if the field is missing or empty
33	ReportnetValidationRule	Validation	Checks if the field is missing or empty
34	ReportnetValidationRule	Validation	Checks if the field is missing or empty
35	ReportnetValidationRule	Validation	Checks if the field is missing or empty
36	ReportnetValidationRule	Validation	Checks if the field is missing or empty
37	ReportnetValidationRule	Validation	Checks if the field is missing or empty
38	ReportnetValidationRule	Validation	Checks if the field is missing or empty
39	ReportnetValidationRule	Validation	Checks if the field is missing or empty
40	ReportnetValidationRule	Validation	Checks if the field is missing or empty
41	ReportnetValidationRule	Validation	Checks if the field is missing or empty
42	ReportnetValidationRule	Validation	Checks if the field is missing or empty
43	ReportnetValidationRule	Validation	Checks if the field is missing or empty
44	ReportnetValidationRule	Validation	Checks if the field is missing or empty
45	ReportnetValidationRule	Validation	Checks if the field is missing or empty
46	ReportnetValidationRule	Validation	Checks if the field is missing or empty
47	ReportnetValidationRule	Validation	Checks if the field is missing or empty
48	ReportnetValidationRule	Validation	Checks if the field is missing or empty
49	ReportnetValidationRule	Validation	Checks if the field is missing or empty
50	ReportnetValidationRule	Validation	Checks if the field is missing or empty

EEA Reportnet 3 – Supporting information

EEA Reportnet 3 – Reference datasets

- Reference code list of NUTS (Nomenclature of Units for Territorial Statistics) and LAU (Local Administrative Units) regions from Eurostat
- NUTS and LAU equivalence in Ireland

	NUTS 1	#	NUTS 2	#	NUTS 3	#	LAU	#
IE	-	1	Regions	3	Regional Authority Regions	8	Local Electoral Areas	166

> Noise

Templates

Data Model

Documentation

UMLs

Guidelines

Videos

Reporting Examples

Validation Rules

Reference datasets

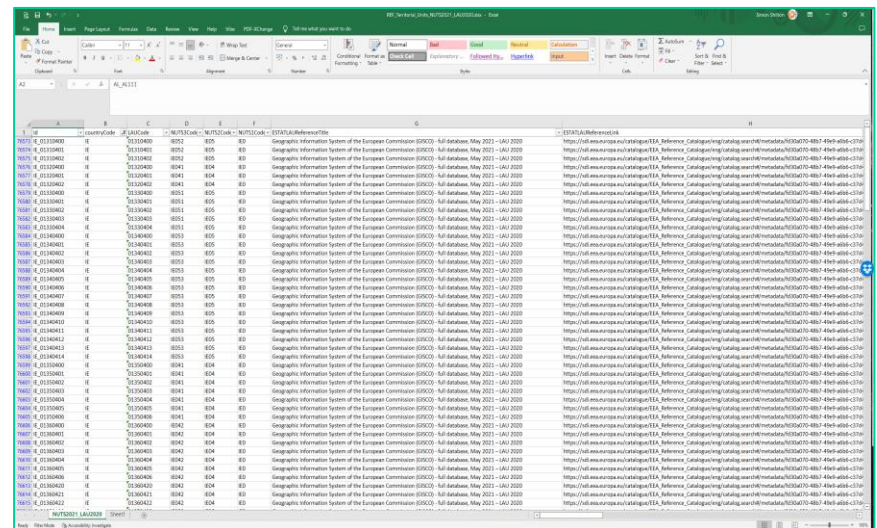
Reference datasets

Reference data used for specific dataflow validations.

 Reference dataset of statistical (NUTS) and administrative units (LAU)

The reference dataset of LAU and NUTS codes is composed from the European Commission geospatial GISCO database, NUTS 2021 and LAU 2020 (scale 1: 100 000), and the Correspondence table LAU – NUTS 2021, provided by Eurostat. Version July 2022.

- RSS feed



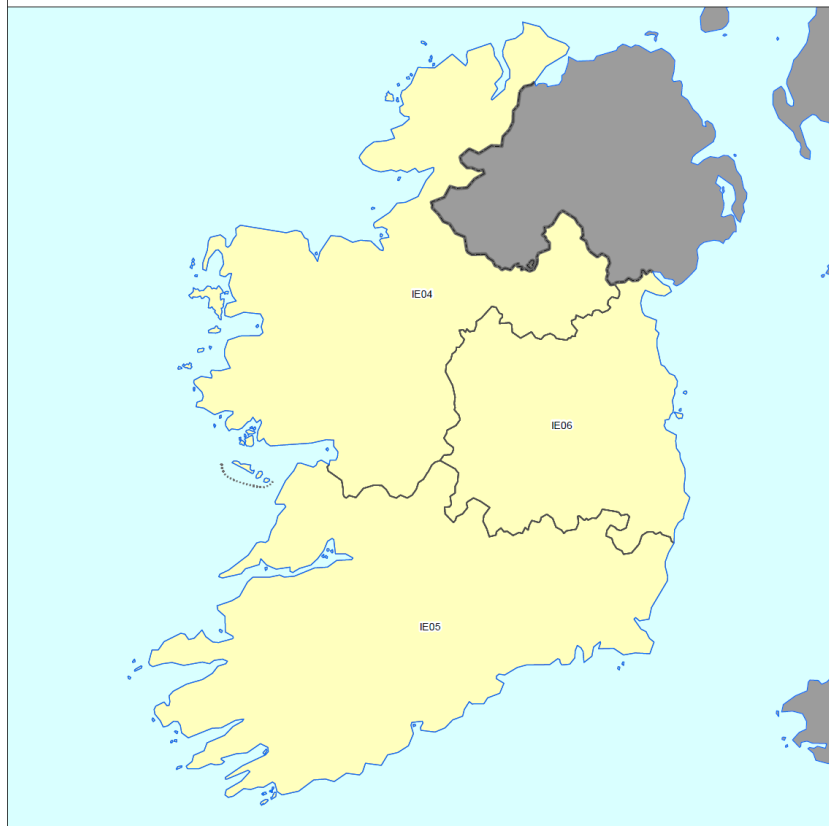
EEA Reportnet 3 – Supporting information

- Irish NUTS Regions defined by CSO:
 - <https://www.cso.ie/en/methods/revnuts23/>

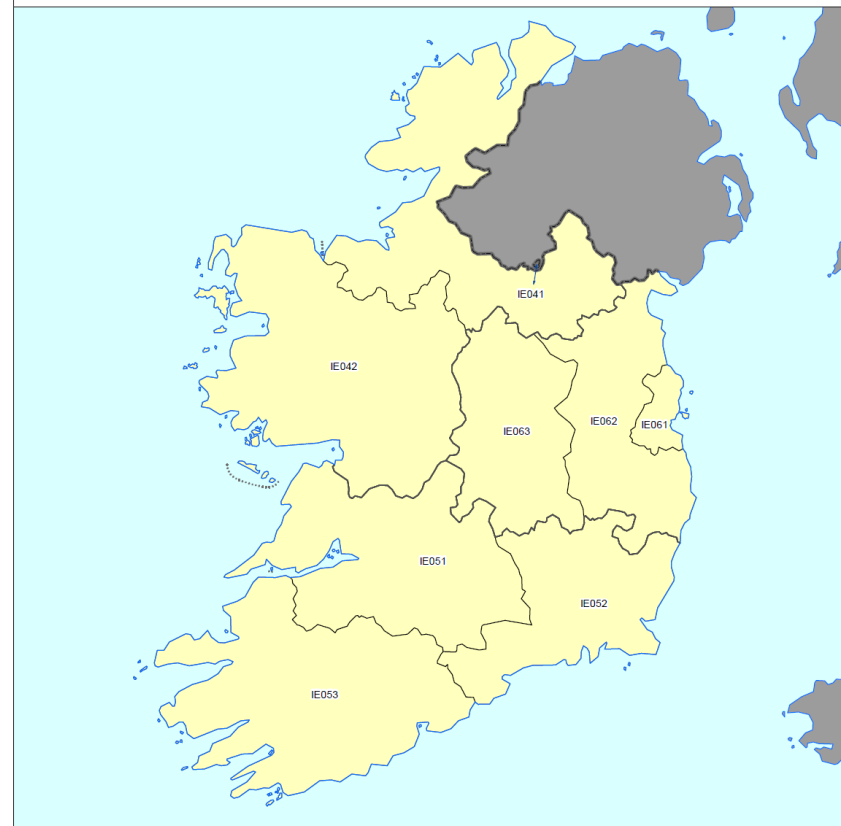
NUTS2 Code	NUTS 2 Name	NUTS3 Code	NUTS 3 Name	County
IE04	Northern & Western	IE041	Border	Donegal
				Sligo
				Leitrim
				Cavan
				Monaghan
		IE042	West	Galway
				Mayo
				Roscommon
IE05	Southern	IE051	Mid-west	Clare
				Tipperary
		IE052	South East	Limerick
				Waterford
				Kilkenny
				Carlow
				Wexford
		IE053	South-West	Cork
				Kerry
IE06	Eastern & Midland	IE061	Dublin	Dublin
		IE062	Mid-East	Wicklow
				Kildare
				Meath
				Louth
		IE063	Midlands	Longford
				Westmeath
				Offaly
				Laois

EEA Reportnet 3 – Supporting information

ÉIRE/IRELAND - NUTS level 2

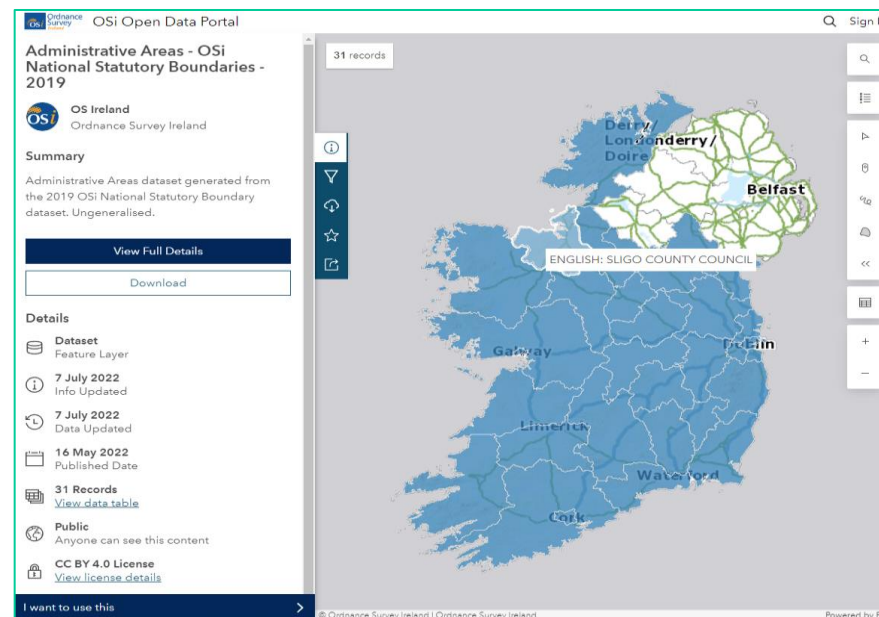


ÉIRE/IRELAND - NUTS level 3



EEA Reportnet 3 – Supporting information

- Administrative Areas ungeneralised available from OSi Open Data portal:
 - https://data-osi.opendata.arcgis.com/datasets/d81188d16e804bde81548e982e80c53e_0/explore
 - It is proposed to report major roads and major railways at Administrative Areas level (31) – each contain several LEA (Eurostat LAU)



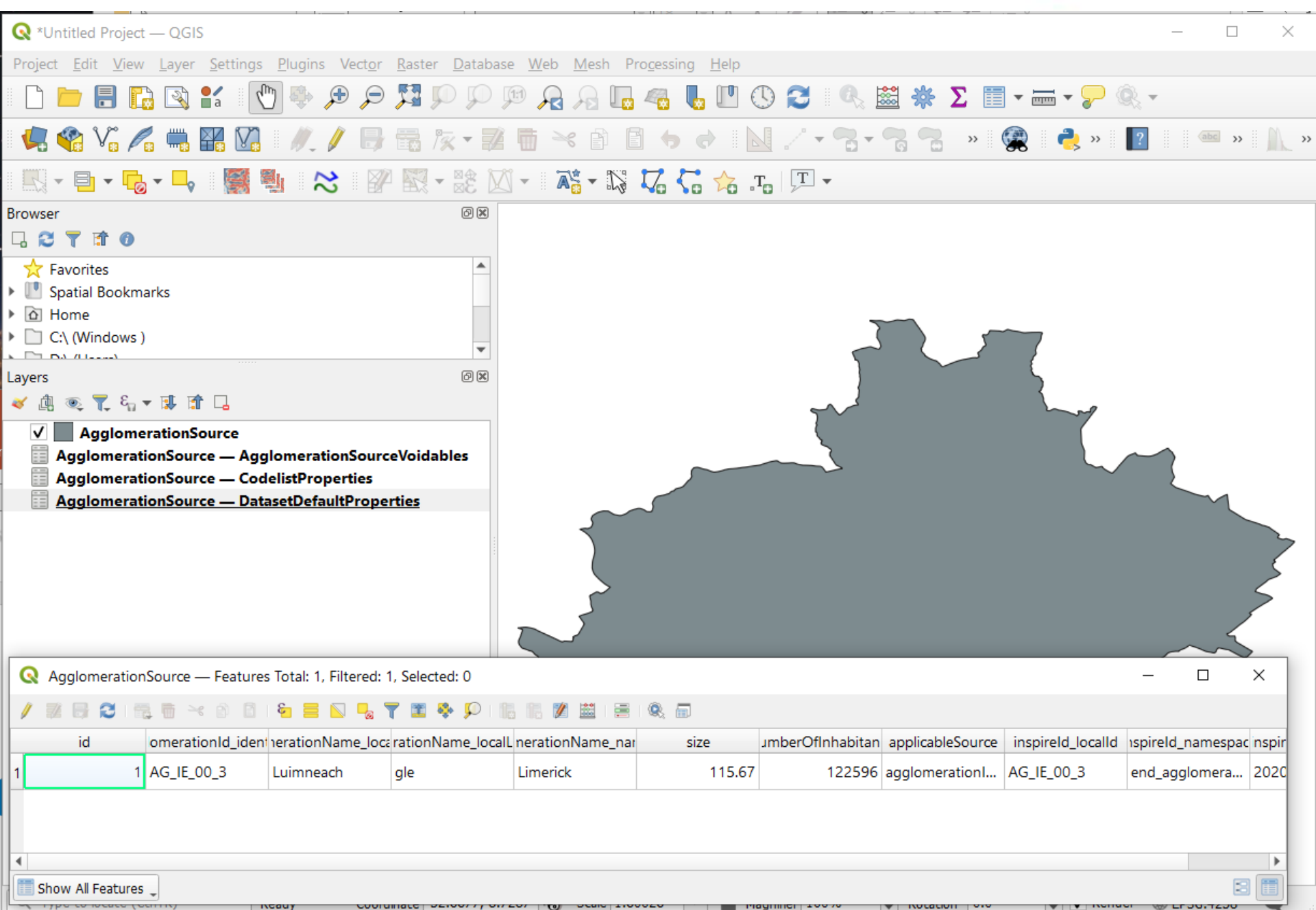
EEA Reportnet 3 – Supporting information

- Hale Studio
 - <https://wettransform.to/halestudio/>
 - open source, developed for INSPIRE implementation
 - Windows, Linux, Mac OS
 - May be used to translate SHP files into GeoPackage templates
 - Examples of use shown in EEA videos
 - GitHub geopackage-end repository of GeoPackage templates
 - <https://github.com/wettransform-os/geopackage-end>
- QGIS
 - <https://www.qgis.org/en/site/>
 - open source
 - Windows, Linux, Mac OS
 - May be used for preparing GIS data in SHP or GeoPackage

Reporting DF1_5 Extents to EPA

DF1_5 Reporting

- Agglomerations
 - Report per agglomeration (3)
 - LAs will also need a report per LA for action planning (10)
 - Boundary from EPA previously supplied
 - numberOfInhabitants: Population within each agglomeration boundary
 - from Census 2022 uplifted SAPS data previously supplied by EPA
 - agglomerationId_identifier
 - Dublin: AG_IE_00_1
 - Cork: AG_IE_00_2
 - Limerick: AG_IE_00_3
 - inspireId_namespace: end_agglomeration_IE
 - inspireId_VersionId: 2020
 - Year of last mandatory reporting of DF1_5

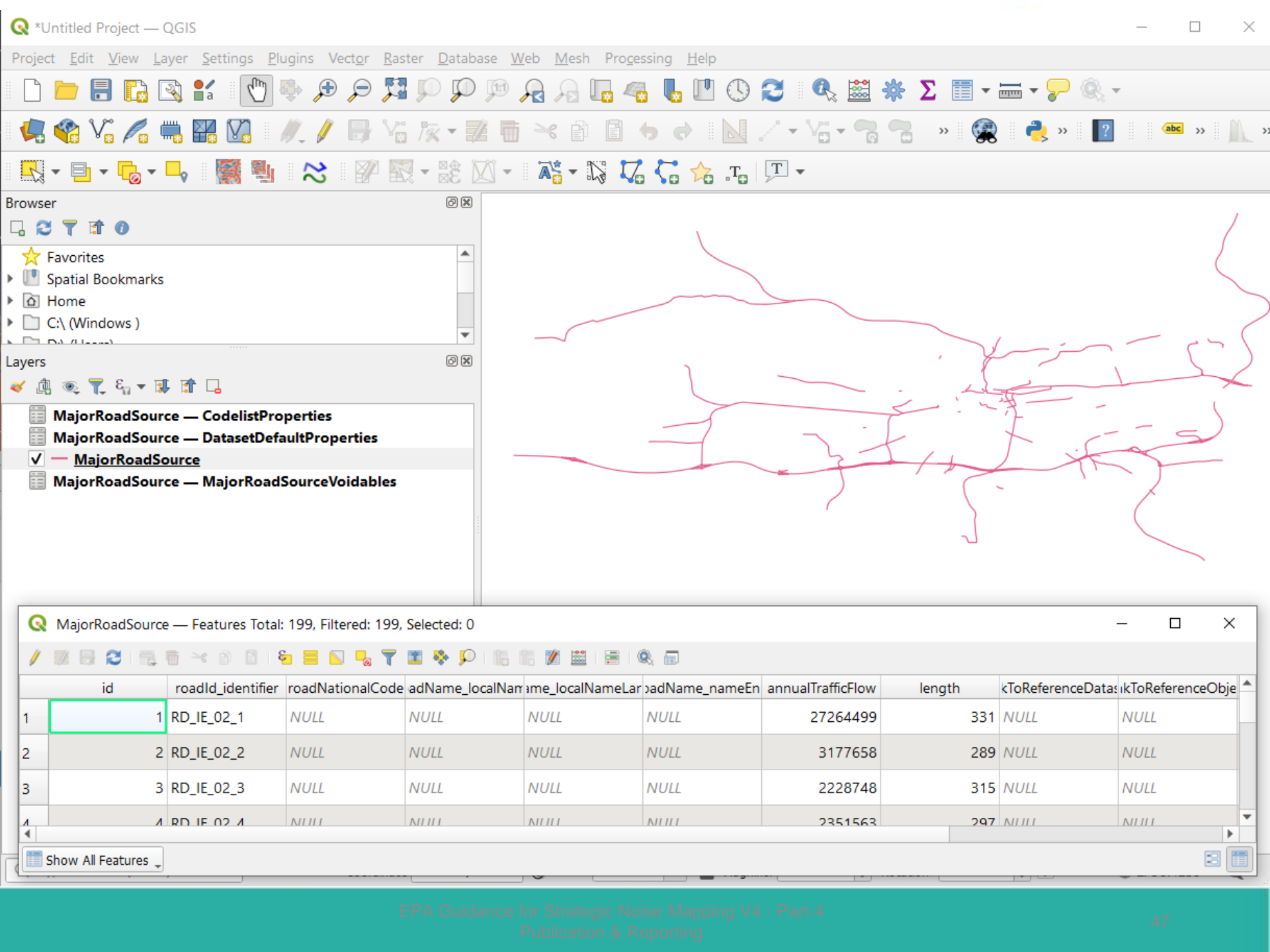


DF1_5 Reporting

- Major Roads
 - Report per Administrative Area (31)
 - Each contain several LEA (Eurostat LAU)
 - <https://data-osi.opendata.arcgis.com/datasets/osi::administrative-areas-osi-national-statutory-boundaries-2019/explore?location=53.156316%2C-6.997098%2C7.91>
 - roadId_identifier
 - RD_IE_[Region code]_integer
 - Region code = OBJECTID in Administrative areas boundary dataset, two characters
 - Integer = numerical increment from 1
 - E.g: RD_IE_01_125 (road link #125 in Dublin City), RD_IE_12_56 (road link #56 in Clare County)

DF1_5 Reporting

- Major Roads (continued)
 - Geometry
 - MUST be one link per road, not carriageway
 - Report using OSi PRIME2 WAY_GDF2
 - Caution: WAY_GDF1 to WAY_GDF2 link will require manual checks around slip roads joining main carriageways
 - annualTrafficFlow: total annual vehicle flow of all carriageways per section
 - inspireId_namespace: end_majorroad_IE
 - inspireId_VersionId: 2020
 - Year of last mandatory reporting of DF1_5



DF1_5 Reporting

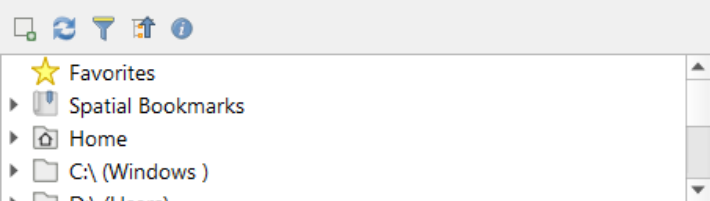
- Major Railways
 - Report per Administrative Area (31)
 - Each contain several LEA (Eurostat LAU)
 - <https://data-osi.opendata.arcgis.com/datasets/osi::administrative-areas-osi-national-statutory-boundaries-2019/explore?location=53.156316%2C-6.997098%2C7.91>
 - railId_identifier
 - RL_IE_[Region code]_integer
 - Region code = OBJECTID in Administrative areas boundary dataset, two characters
 - Integer = numerical increment from 1
 - E.g: RL_IE_18_27 (rail link #27 in Kildare), RL_IE_11_05 (rail link 5 in Fingal County)

DF1_5 Reporting

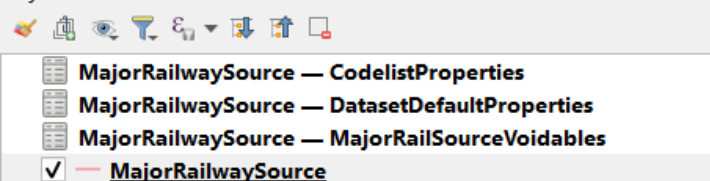
- Major Railways (continued)
 - Geometry
 - MUST be one link per rail corridor, not per line
 - Report using OSi PRIME2 Rail Network Segment Line GDF_2
 - annualTrafficFlow: total annual train flow of all lines in the corridor, per section
 - inspireId_namespace: end_majorrailway_IE
 - inspireId_VersionId: 2020
 - Year of last mandatory reporting of DF1_5



Browser



Layers



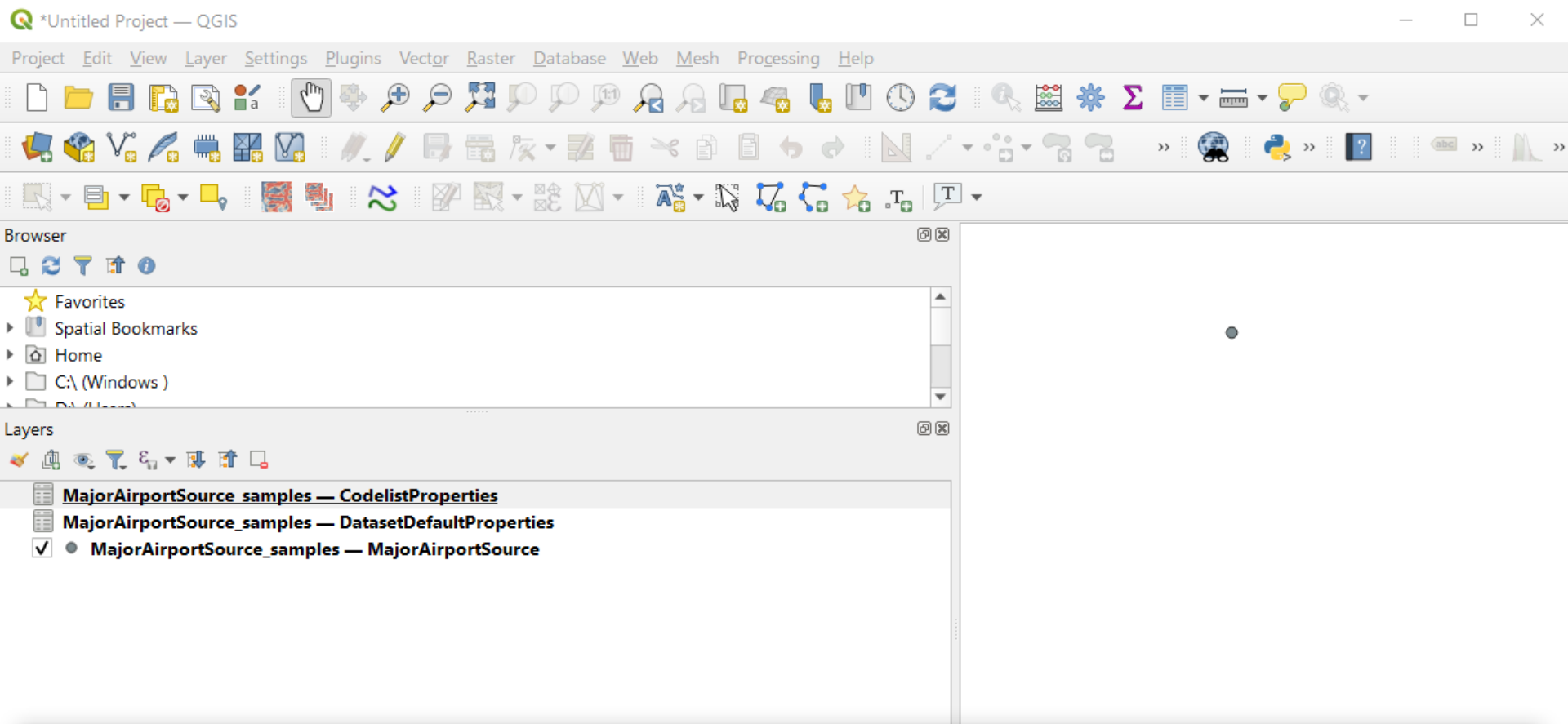
MajorRailwaySource — Features Total: 9, Filtered: 9, Selected: 0

id	railId_identifier	railNationalCode	railName_localName	railName_nameEng	annualTrafficFlow	length	linkToReferenceData	linkToReferenceObject	in
1	RL_IE_10_1	NULL	NULL	NULL	31624	7226	NULL	NULL	NO
2	RL_IE_10_2	NULL	NULL	NULL	31624	67	NULL	NULL	NO
3	RL_IE_10_3	NULL	NULL	NULL	31624	400	NULL	NULL	NO
4	RL_IE_10_4	NULL	NULL	NULL	32331	7223	NULL	NULL	NO

Show All Features

DF1_5 Reporting

- Major Airport
 - Report per Major Airport (1)
 - id: 1
 - ICAOCode: EIDW
 - annualTrafficFlow: total number of movements during 2021



MajorAirportSource_samples — MajorAirportSource — Features Total: 1, Filtered: 1, Selected: 0

id	ICAOCode	airportName_localName	airportName_localNameLanguage	airportName_nameEng	annualTrafficFlow	↳ToReferenceData	↳ToReferenceObj
1	LOWW	Flughafen Wien	deu	Vienna airport	226811	http://geometa...	https://inspire.lf...

Show All Features

DF1_5 Reporting to EPA

- NMBs to report DF1_5 Extents to EPA
 - Agglomerations
 - Report per agglomeration (3)
 - LAs will also need a report per LA for action planning (10)
 - Major roads & railways
 - Report per Administrative Area (31)
 - Each contain several LEA (Eurostat LAU)
 - Major Airports
 - Report per airport (1)
- Report using EEA DF1_5 templates
- Report two versions of each GeoPackage
 - IRENET95 / Irish Transverse Mercator, and
 - EPSG:4258 (ETRS89 geographical coordinates)

Round 4 DF4_8 Noise Maps Reporting to EPA

DF4_8 Reporting - Agglomeration

- Agglomerations
 - Report per agglomeration (3)
- ESTATUnitReference
 - ESTATLAUReferenceTitle
 - relevant LAU reference IDs which relate to the agglomeration area reported
 - ESTATLAUReferenceLink
 - <https://www.eionet.europa.eu/reportnet/docs/noise/reference-datasets>

DF4_8 Reporting - Agglomeration

- Agglomerations
 - ExposureAgglomeration
 - agglomerationId_identifier
 - Dublin: AG_IE_00_1
 - Cork: AG_IE_00_2
 - Limerick: AG_IE_00_3
 - noiseSource
 - agglomerationRoad, agglomerationMajorRoad, agglomerationRailway, agglomerationMajorRailway, agglomerationAir, agglomerationMajorAirport, agglomerationIndustry, agglomerationAllSources (optional)
 - computationAndMeasurementMethod
 - Commission Directive (EU) 2015/996 of 19/05/2015 as amended by Delegated Directive (EU) 2021/1226 of 21/12/2020

DF4_8 Reporting - Agglomeration

- Agglomerations
 - ExposureAgglomeration (cont)
 - sourceCoverageCriteria
 - All roads inside the agglomeration
 - All railways inside the agglomeration
 - All airports inside the agglomeration
 - All industry inside the agglomeration licensed under IED
 - receiverPointsInDwelling
 - (I) Determination of the dwellings and people living in dwellings exposed to noise (Case 1A); (II) Assigning noise assessment points to dwellings and people living in dwellings: (Case 2A procedure); (III) Assigning dwellings and people living in dwellings to receiver points: no information on the location of dwellings within building footprints as explained above is available (Case b).

DF4_8 Reporting - Agglomeration

- Agglomerations
 - ExposureValueInAgglomeration
 - agglomerationId_identifier
 - Dublin: AG_IE_00_1
 - Cork: AG_IE_00_2
 - Limerick: AG_IE_00_3
 - noiseSource
 - agglomerationRoad, agglomerationMajorRoad, agglomerationRailway, agglomerationMajorRailway, agglomerationAirport, agglomerationMajorAirport, agglomerationIndustry, agglomerationAllSources (optional)
 - exposureType
 - mostExposedFacade
 - withQuietFacade (optional)
 - withSpecialInsulation (optional)

DF4_8 Reporting - Agglomeration

- Agglomerations
 - ExposureValueInAgglomeration (cont)
 - noiseLevel (5 dB bands)
 - Lden5559 to LdenGreaterThan75
 - Lnight4549 to LnightGreaterThan70
 - exposedPeople: # of people in each 5 dB band
 - exposedHospitals: # of hospital buildings in each 5 dB band
 - exposedSchools: # of school buildings in each 5 dB band
 - Note: #s should be exact, not rounded to nearest 100
 - ESTATUnitCode:
 - relevant LAU reference IDs which relate to the agglomeration area reported
 - ICAOCode: EIDW
 - descriptionAllSource (optional)
 - E.g: agglomerationRoad + agglomerationRail + agglomerationAir

DF4_8 Reporting - Agglomeration

- Agglomerations
 - NoiseContours_airportsInAgglomeration_Lden
 - NoiseContours_airportsInAgglomeration_Lnight
 - NoiseContours_allSourceInAgglomeration_Lden (optional)
 - NoiseContours_allSourcesInAgglomeration_Lnight (optional)
 - NoiseContours_industryInAgglomeration_Lden
 - NoiseContours_industryInAgglomeration_Lnight
 - NoiseContours_railwaysInAgglomeration_Lden
 - NoiseContours_railwaysInAgglomeration_Lnight
 - NoiseContours_roadsInAgglomeration_Lden
 - NoiseContours_roadsInAgglomeration_Lnight
 - Note:
 - Polygon contours recommended in all cases

DF4_8 Reporting - Agglomeration

- Agglomerations
 - NoiseContours_XXXXXXXXXXXXXXXXX
 - category
 - Lden5559 to LdenGreaterThan75
 - Lnight4549 to LnightGreaterThan70
 - source
 - roadsInAgglomeration
 - railwaysInAgglomeration
 - airportsInAgglomeration
 - industryInAgglomeration
 - allSourcesInAgglomeration

QGIS *Untitled Project — QGIS

Project Edit View Layer Settings Plugins Vector Raster Database Web Mesh Processing Help

Browser

- Favorites
- Spatial Bookmarks
- Home
- C:\ (Windows)
- D:\ (Users)

Layers

- Agglomerations-StrategicNoiseMaps — CodelistProperties
- Agglomerations-StrategicNoiseMaps — DatasetDefaultProperties
- Agglomerations-StrategicNoiseMaps — ESTATUnitReference
- Agglomerations-StrategicNoiseMaps — ExposureAgglomeration
- Agglomerations-StrategicNoiseMaps — ExposureValueInAgglomeration
- Agglomerations-StrategicNoiseMaps — NoiseContours_airportsInAgglomeration_Lden
- Agglomerations-StrategicNoiseMaps — NoiseContours_airportsInAgglomeration_Night
- Agglomerations-StrategicNoiseMaps — NoiseContours_allSourcesInAgglomeration_Lden
- Agglomerations-StrategicNoiseMaps — NoiseContours_allSourcesInAgglomeration_Night

Agglomerations-StrategicNoiseMaps — ExposureValueInAgglomeration — Features Total: 92, Filtered: 92, Selected: 0

	id	lomerationIdIdent	noiseSource	exposureType	noiseLevel	exposedPeople	exposedHospitals	exposedSchools	ESTATUnitCode	ICAOCode	asc
1	1	AG_AT_00_1	agglomerationRoad	mostExposedFacade	Lden5559	235940	5	10			
2	2	AG_AT_00_1	agglomerationRoad	mostExposedFacade	Lden6064	490510	0	0			
3	3	AG_AT_00_1	agglomerationRoad	mostExposedFacade	Lden6569	554555	0	0			
4	4	AG_AT_00_1	agglomerationRoad	mostExposedFacade	Lden7074	341712	1	0			

Show All Features

DF4_8 Reporting - Major Road

- Major Road
 - Report per Administrative Area (31)
 - Each contain several LEA (Eurostat LAU)
 - <https://data-osi.opendata.arcgis.com/datasets/osi::administrative-areas-osi-national-statutory-boundaries-2019/explore?location=53.156316%2C-6.997098%2C7.91>
 - ESTATUnitReference
 - ESTATLAUReferenceTitle
 - relevant LAU reference ID which relate to the Administrative Area reported
 - ESTATLAUReferenceLink
 - <https://www.eionet.europa.eu/reportnet/docs/noise/reference-datasets>

DF4_8 Reporting - Major Road

- Major Road
 - ExposureMajorRoad
 - reportingLevel: LAU
 - ESTATUnitCode:
 - relevant LAU reference IDs which relate to Administrative Area reported
 - computationAndMeasurementMethod
 - Commission Directive (EU) 2015/996 of 19/05/2015 as amended by Delegated Directive (EU) 2021/1226 of 21/12/2020
 - receiverPointsInDwelling
 - (I) Determination of the dwellings and people living in dwellings exposed to noise (Case 1A); (II) Assigning noise assessment points to dwellings and people living in dwellings: (Case 2A procedure); (III) Assigning dwellings and people living in dwellings to receiver points: no information on the location of dwellings within building footprints as explained above is available (Case b).

DF4_8 Reporting - Major Road

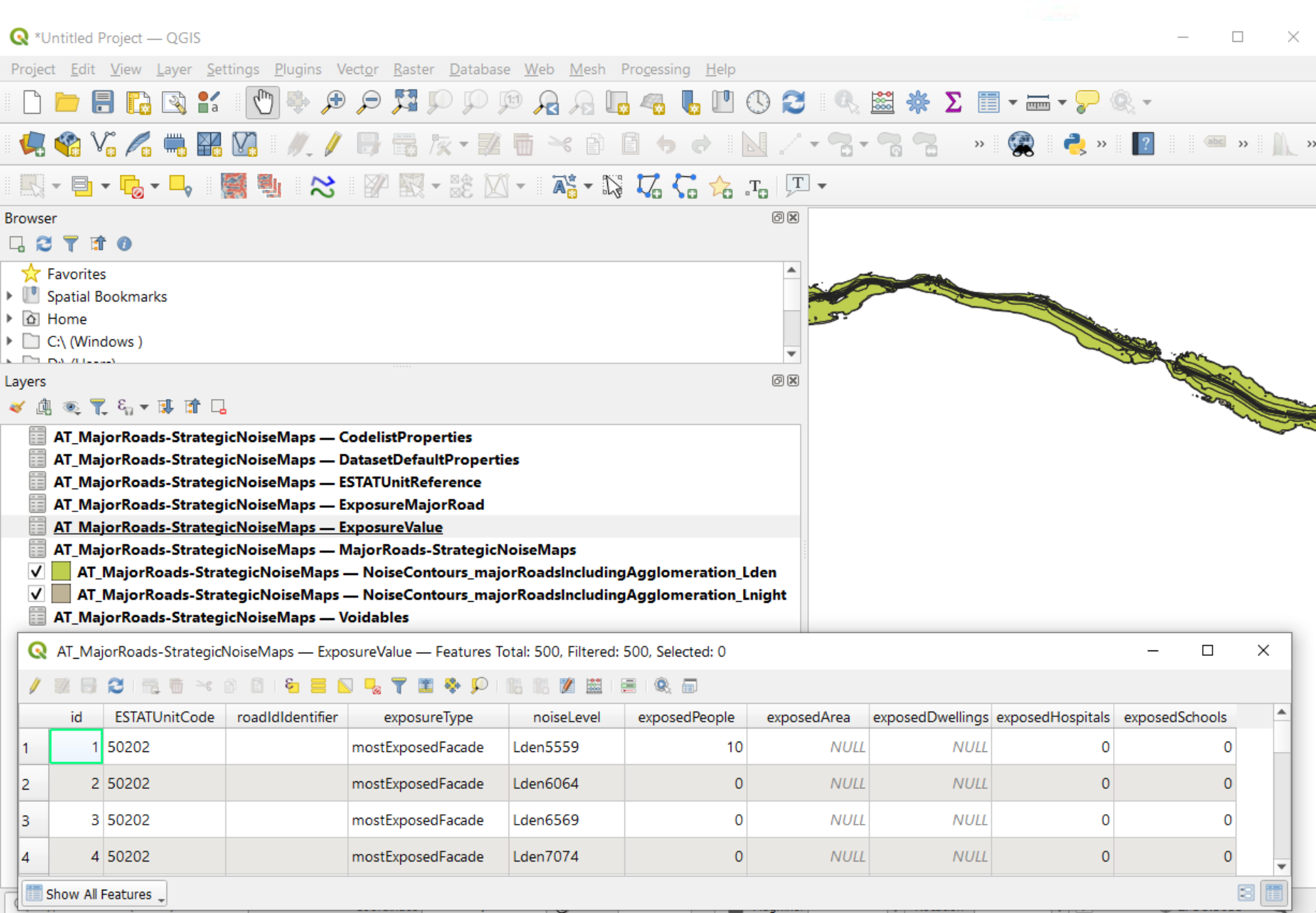
- Major Road
 - ExposureValue
 - ESTATUnitCode:
 - relevant LAU reference IDs which relate to the Administrative Area reported
 - exposureType
 - mostExposedFacade
 - mostExposedFacadeIncludingAgglomeration
 - withQuietFacade (optional)
 - withSpecialInsulation (optional)
 - noiseLevel (5 dB bands)
 - Lden5559 to LdenGreaterThan75
 - Lnight4549 to LnightGreaterThan70

DF4_8 Reporting - Major Road

- Major Road
 - ExposureValue (cont)
 - exposedPeople: # of people in each 5 dB band
 - exposedArea: area in km2 in each 5 dB band
 - exposedDwellings: # of dwellings in each 5 dB band
 - exposedHospitals: # of hospital buildings in each 5 dB band
 - exposedSchools: # of school buildings in each 5 dB band
 - Note: #s should be exact, not rounded to nearest 100

DF4_8 Reporting - Major Road

- Major Road
 - NoiseContours_majorRoadsIncludingAgglomeration_Lden
 - NoiseContours_majorRoadsIncludingAgglomeration_Lnight
- Note:
 - Polygon contours recommended in all cases
- NoiseContours_XXXXXXXXXXXXXXXXX
 - category
 - Lden5559 to LdenGreaterThan75
 - Lnight4549 to LnightGreaterThan70
 - source
 - majorRoadsIncludingAgglomeration



DF4_8 Reporting - Major Railway

- Major Railway
 - Report per Administrative Area (31)
 - Each contain several LEA (Eurostat LAU)
 - <https://data-osi.opendata.arcgis.com/datasets/osi::administrative-areas-osi-national-statutory-boundaries-2019/explore?location=53.156316%2C-6.997098%2C7.91>
 - ESTATUnitReference
 - ESTATLAUReferenceTitle
 - relevant LAU reference ID which relate to the Administrative Area reported
 - ESTATLAUReferenceLink
 - <https://www.eionet.europa.eu/reportnet/docs/noise/reference-datasets>

DF4_8 Reporting - Major Railway

- Major Railway
 - ExposureMajorRailway
 - reportingLevel: LAU
 - ESTATUnitCode:
 - relevant LAU reference IDs which relate to the Administrative Area reported
 - computationAndMeasurementMethod
 - Commission Directive (EU) 2015/996 of 19/05/2015 as amended by Delegated Directive (EU) 2021/1226 of 21/12/2020
 - receiverPointsInDwelling
 - (I) Determination of the dwellings and people living in dwellings exposed to noise (Case 1A); (II) Assigning noise assessment points to dwellings and people living in dwellings: (Case 2A procedure); (III) Assigning dwellings and people living in dwellings to receiver points: no information on the location of dwellings within building footprints as explained above is available (Case b).

DF4_8 Reporting - Major Railway

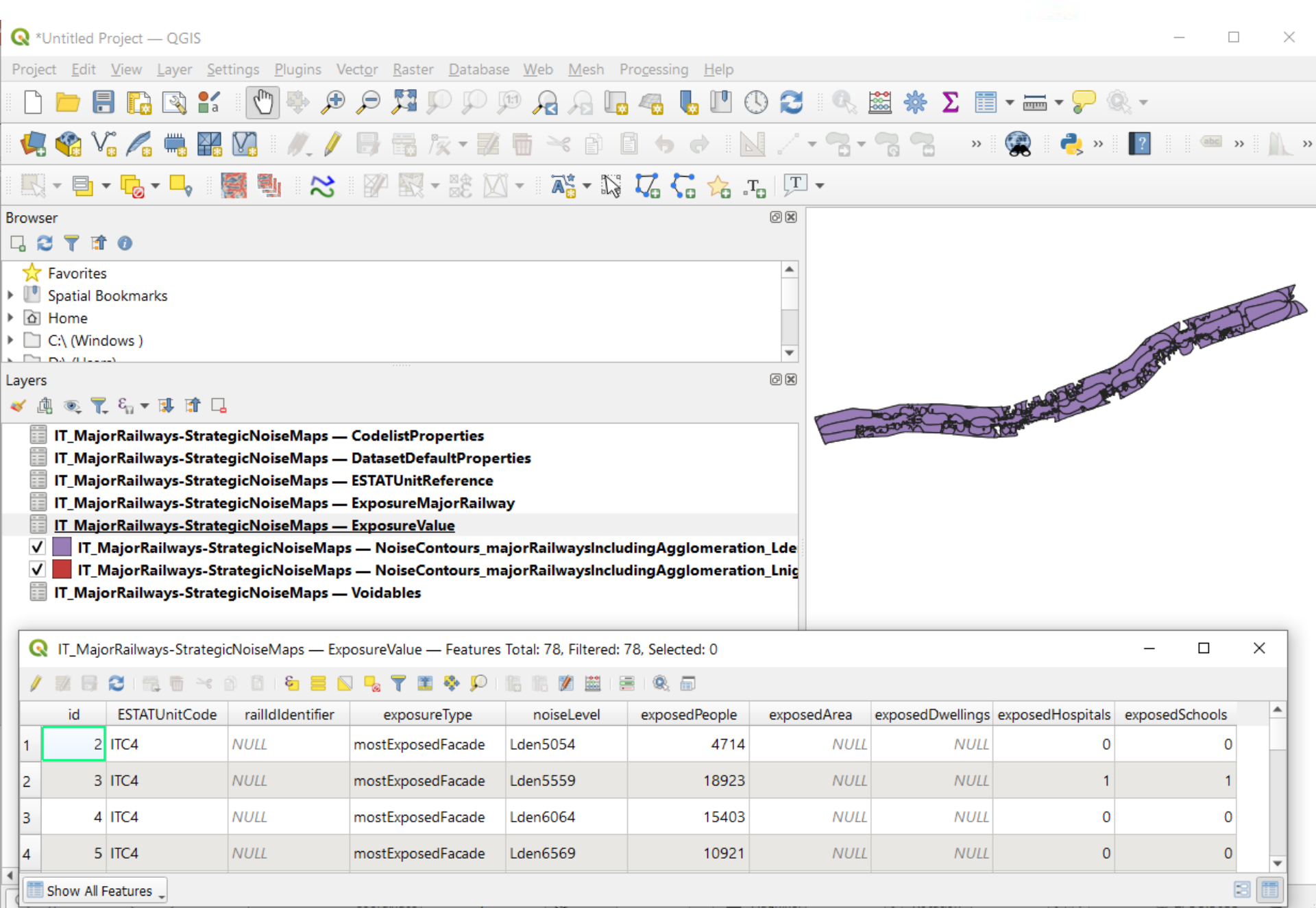
- Major Railway
 - ExposureValue
 - ESTATUnitCode:
 - relevant LAU reference IDs which relate to the Administrative Area reported
 - exposureType
 - mostExposedFacade
 - mostExposedFacadeIncludingAgglomeration
 - withQuietFacade (optional)
 - withSpecialInsulation (optional)
 - noiseLevel (5 dB bands)
 - Lden5559 to LdenGreaterThan75
 - Lnight4549 to LnightGreaterThan70

DF4_8 Reporting - Major Railway

- Major Railway
 - ExposureValue (cont)
 - exposedPeople: # of people in each 5 dB band
 - exposedArea: area in km2 in each 5 dB band
 - exposedDwellings: # of dwellings in each 5 dB band
 - exposedHospitals: # of hospital buildings in each 5 dB band
 - exposedSchools: # of school buildings in each 5 dB band
 - Note: #s should be exact, not rounded to nearest 100

DF4_8 Reporting - Major Railway

- Major Railway
 - NoiseContours_majorRailwaysIncludingAgglomeration_Lden
 - NoiseContours_majorRailwaysIncludingAgglomeration_Lnight
- Note:
 - Polygon contours recommended in all cases
- NoiseContours_XXXXXXXXXXXXXXXXX
 - category
 - Lden5559 to LdenGreaterThan75
 - Lnight4549 to LnightGreaterThan70
 - source
 - majorRailwaysIncludingAgglomeration



DF4_8 Reporting - Major Airport

- Major Airport
 - Report per major airport
- ESTATUnitReference
 - ESTATLAUReferenceTitle
 - relevant LAU reference ID which relates to airport reported
 - ESTATLAUReferenceLink
 - <https://www.eionet.europa.eu/reportnet/docs/noise/reference-datasets>

DF4_8 Reporting - Major Airport

- Major Airport
 - ExposureValue
 - ICAOCode: EIDW
 - ESTATUnitCode:
 - relevant LAU reference ID which relates to airport reported
 - exposureType
 - mostExposedFacade
 - mostExposedFacadeIncludingAgglomeration
 - withQuietFacade (optional)
 - withSpecialInsulation (optional)
 - noiseLevel (5 dB bands)
 - Lden5559 to LdenGreaterThan75
 - Lnight4549 to LnightGreaterThan70

DF4_8 Reporting - Major Airport

- Major Airport
 - ExposureValue (cont)
 - exposedPeople: # of people in each 5 dB band
 - exposedArea: area in km² in each 5 dB band
 - exposedDwellings: # of dwellings in each 5 dB band
 - exposedHospitals: # of hospital buildings in each 5 dB band
 - exposedSchools: # of school buildings in each 5 dB band
 - Note: # should be exact, not rounded to nearest 100

DF4_8 Reporting - Major Airport

- Major Airport
 - ExposureMajorAirport
 - ICAOCode: EIDW
 - ESTATUnitCode:
 - relevant LAU reference ID which relates to airport reported
 - computationAndMeasurementMethod
 - Commission Directive (EU) 2015/996 of 19/05/2015 as amended by Delegated Directive (EU) 2021/1226 of 21/12/2020
 - receiverPointsInDwelling
 - (I) Determination of the dwellings and people living in dwellings exposed to noise (Case 1A); (II) Assigning noise assessment points to dwellings and people living in dwellings: all population of a building is associated to the nearest noise calculation point on the grid.

DF4_8 Reporting - Major Airport

- Major Airport
 - NoiseContours_majorAirportsIncludingAgglomeration_Lden
 - NoiseContours_majorAirportsIncludingAgglomeration_Lnight
- Note:
 - Polygon contours recommended in all cases
- NoiseContours_XXXXXXXXXXXXXXXXX
 - category
 - Lden5559 to LdenGreaterThan75
 - Lnight4549 to LnightGreaterThan70
 - source
 - majorAirportsIncludingAgglomeration



Browser

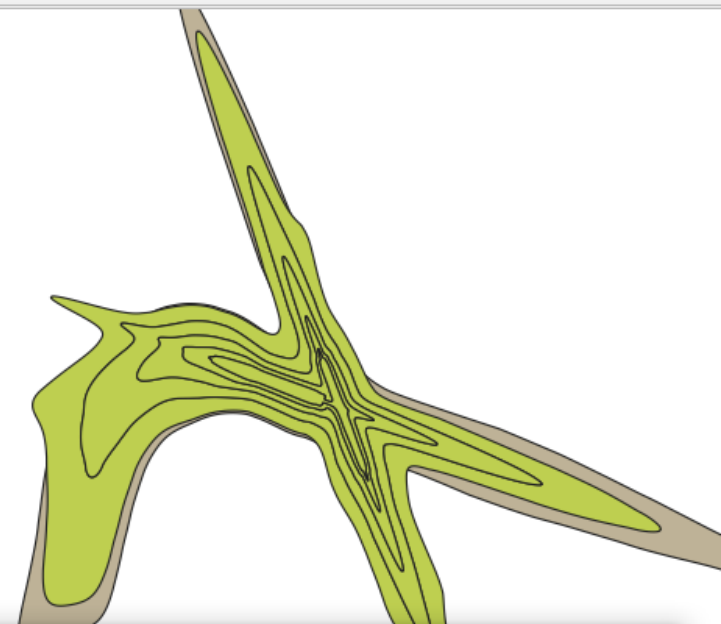


- ★ Favorites
- ▶ Spatial Bookmarks
- ▶ Home
- ▶ C:\ (Windows)
- ▶ D:\ (Linux)

Layers



- AT_MajorAirports-StrategicNoiseMaps-LOWW — CodelistProperties
- AT_MajorAirports-StrategicNoiseMaps-LOWW — DatasetDefaultProperties
- AT_MajorAirports-StrategicNoiseMaps-LOWW — ESTATUnitReference
- AT_MajorAirports-StrategicNoiseMaps-LOWW — ExposureMajorAirport
- AT_MajorAirports-StrategicNoiseMaps-LOWW — ExposureValue
- ☒ AT_MajorAirports-StrategicNoiseMaps-LOWW — NoiseContours_majorAirportsIncludingAgglomerat
- ☒ AT_MajorAirports-StrategicNoiseMaps-LOWW — NoiseContours_majorAirportsIncludingAgglomerat
- AT_MajorAirports-StrategicNoiseMaps-LOWW — Voidables



AT_MajorAirports-StrategicNoiseMaps-LOWW — ExposureValue — Features Total: 24, Filtered: 24, Selected: 0



	id	ICAOCode	ESTATUnitCode	exposureType	noiseLevel	exposedPeople	exposedArea	exposedDwellings	exposedHospitals	exposedSchools
1	1	LOWW	NULL	mostExposedFacade	Lden5559	9715	NULL	NULL	1	2
2	2	LOWW	NULL	mostExposedFacade	Lden6064	602	NULL	NULL	0	1
3	3	LOWW	NULL	mostExposedFacade	Lden6569	0	NULL	NULL	0	0
4	4	LOWW	NULL	mostExposedFacade	LdenGreaterThan75	0	NULL	NULL	0	0

Show All Features

Reporting DF4_8 to EPA

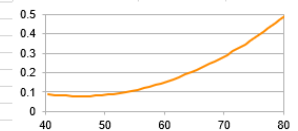
- NMBs to report DF4_8 Noise Maps to EPA
 - Agglomerations
 - Report per agglomeration (3)
 - Major roads & railways
 - Report per Administrative Area (31)
 - Each contain several LEA (Eurostat LAU)
 - Major Airports
 - Report per major airport (1)
- Report using EEA DF4_8 templates
- Report two versions of each GeoPackage
 - IRENET95 / Irish Transverse Mercator, and
 - EPSG:4258 (ETRS89 geographical coordinates)

Reporting Harmful Effects

Reporting to EPA

- Reporting of Harmful Effects to EPA is a national report under the Regulations, not a report to the EEA using Reportnet.
- NMB report to EPA using a spreadsheet template from EPA.
- Harmful Effects to be reported to EPA during Q2 2023.

HA in the case of road noise						
		Formula 4		Formula 12		
		exposed to	Centre	AR	N	
		Lden	Value	HA	HA	
10	40..41 (Lden)	#People	0.00	40.5	0.0882	0.00
11	41..42 (Lden)	#People	7.48	41.5	0.0851	0.64
12	42..43 (Lden)	#People	28.58	42.5	0.0826	2.36
13	43..44 (Lden)	#People	66.19	43.5	0.0809	5.35
14	44..45 (Lden)	#People	211.02	44.5	0.0798	16.84
15	45..46 (Lden)	#People	437.69	45.5	0.0794	34.76
16	46..47 (Lden)	#People	621.04	46.5	0.0797	49.51
17	47..48 (Lden)	#People	1,263.67	47.5	0.0807	101.99
18	48..49 (Lden)	#People	2,455.26	48.5	0.0824	202.27
19	49..50 (Lden)	#People	2,549.12	49.5	0.0847	216.00
20	50..51 (Lden)	#People	3,210.33	50.5	0.0878	281.79
21	51..52 (Lden)	#People	4,042.67	51.5	0.0915	369.89
22	52..53 (Lden)	#People	5,027.35	52.5	0.0959	482.14
23	53..54 (Lden)	#People	5,177.76	53.5	0.1010	522.91
24	54..55 (Lden)	#People	5,865.32	54.5	0.1068	626.22
25	55..56 (Lden)	#People	6,367.28	55.5	0.1132	720.93
26	56..57 (Lden)	#People	6,927.53	56.5	0.1204	833.84
27	57..58 (Lden)	#People	8,054.62	57.5	0.1282	1,032.54
28	58..59 (Lden)	#People	9,747.27	58.5	0.1367	1,332.48
29	59..60 (Lden)	#People	7,539.88	59.5	0.1459	1,100.04
30	60..61 (Lden)	#People	5,940.16	60.5	0.1558	925.33
31	61..62 (Lden)	#People	4,474.11	61.5	0.1663	744.21
32	62..63 (Lden)	#People	3,283.66	62.5	0.1776	583.12
33	63..64 (Lden)	#People	2,511.20	63.5	0.1895	475.90
34	64..65 (Lden)	#People	1,817.63	64.5	0.2021	367.39
35	65..66 (Lden)	#People	1,671.91	65.5	0.2154	360.17
36	66..67 (Lden)	#People	1,095.12	66.5	0.2294	251.23
37	67..68 (Lden)	#People	962.61	67.5	0.2441	234.95
38	68..69 (Lden)	#People	861.99	68.5	0.2594	223.62
39	69..70 (Lden)	#People	591.31	69.5	0.2755	162.88
40	70..71 (Lden)	#People	308.73	70.5	0.2922	90.20
41	71..72 (Lden)	#People	199.96	71.5	0.3096	61.90
42	72..73 (Lden)	#People	145.23	72.5	0.3277	47.59
43	73..74 (Lden)	#People	77.89	73.5	0.3464	26.98
44	74..75 (Lden)	#People	32.18	74.5	0.3659	11.77
45	75..76 (Lden)	#People	29.39	75.5	0.3860	11.35
46	76..77 (Lden)	#People	12.51	76.5	0.4068	5.09
47	77..78 (Lden)	#People	2.79	77.5	0.4284	1.20
48	78..79 (Lden)	#People	5.24	78.5	0.4505	2.36
49	79..80 (Lden)	#People	2.17	79.5	0.4734	1.03
50	80..81 (Lden)	#People	2.62	80.5	0.4970	1.30
51	81..82 (Lden)	#People	0.00	81.5	0.5212	0.00
52	82..83 (Lden)	#People	0.00	82.5	0.5461	0.00
53	83..84 (Lden)	#People	0.00	83.5	0.5718	0.00
54	84..85 (Lden)	#People	0.00	84.5	0.5980	0.00
55	85..86 (Lden)	#People	0.00	85.5	0.6250	0.00
56	86..87 (Lden)	#People	0.00	86.5	0.6527	0.00
57	87..88 (Lden)	#People	0.00	87.5	0.6810	0.00
58	88..89 (Lden)	#People	0.00	88.5	0.7101	0.00
59	89..90 (Lden)	#People	0.00	89.5	0.7398	0.00
60						
61		Sum >40	93,628.47			12,522.08
62		Sum >53	73,708.07			10,758.53



Reporting to EPA

- NMB report to EPA using a spreadsheet template from EPA:
 - In 1 dB bands
 - From WHO 2018 recommended levels:
 - Road traffic noise
 - 53 dB L_{den} , 45 dB L_{night}
 - Railway noise
 - 54 dB L_{den} , 45 dB L_{night}
 - Aircraft noise
 - 45 dB L_{den} , 40 dB L_{night}
 - Number of people affected by the harmful effects of noise
 - Ischaemic Heart Disease (IHD)
 - High Annoyance (HA)
 - High Sleep Disturbance (HSD)

Reporting to EPA

- The process should be undertaken for each reporting area, for each noise source:
 - Per agglomeration for agglomeration roads, railways, airports and industry
 - Per County (26) for major roads and major railways
 - Each contain several Local Electoral Areas (LEA) (Eurostat LAU)