

Why is the EPA conducting this research?

Collect data in Ireland and improve our knowledge to inform future policy related to thoron.



Help us create awareness about thoron and radon risk in our homes in Ireland.

Measure the levels in Irish homes to protect our health.



Why should we be concerned about thoron levels in our home?



Radon causes at least 350 lung cancers per year. Thoron can also cause lung cancer.

Understanding the thoron levels in your home can help you determine whether action is needed to reduce your risk of lung cancer.



To find out more about the survey, visit our website or contact us

<https://www.epa.ie/environment-and-you/radiation/radiation-exposure-and-your-health/thoron/>

thoron@epa.ie



To apply for a free test before June 30th 2025

Scan the QR code



or alternatively

Complete the form which came with this leaflet, returning it in the Freepost envelope provided



NATIONAL THORON SURVEY



What is thoron?

Thoron, like Radon, is a naturally occurring radioactive gas. It has no colour, taste or smell.



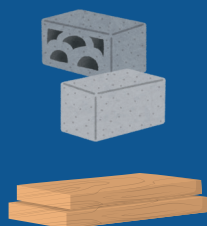
Is thoron harmful?

Radon gas causes approximately 350 lung cancer cases in Ireland per year.

Research has shown that thoron can also cause lung cancer. We don't know the risk in Ireland from the exposure from thoron. This will be the first comprehensive survey of thoron in Irish homes.

Where does it come from?

Thoron is emitted from different building materials used in homes, such as stone, brick, wood and plasterboard.



Why should you measure thoron in your home?

The design, structure and materials in the home determine the amount of your thoron exposure.

Knowing the thoron levels helps you determine if action is needed to reduce your risk of lung cancer, such as improving ventilation or sealing cracks.

How to register your interest

1

Sign up before **June 30th 2025** by either:

Scanning the QR code
or

Returning the completed form in the Freepost envelope.

2

If selected, we will contact you about the delivery of your detector kit and how to place it in your home, starting in **September 2025**.

3

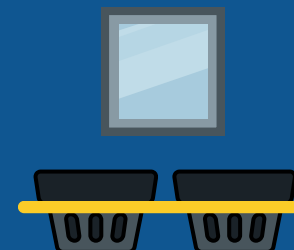
In **February 2026**, we will send you out a Freepost envelope and a questionnaire to return along with your detector kit.

4

At the end of the survey, you will receive a report indicating what the thoron and radon levels are in your home.

What does the detector kit look like?

The detector kit resembles a small mirror and two black cartridges, secured in a holder. In total the kit is about the size of this leaflet.



Where will the detector kit go?



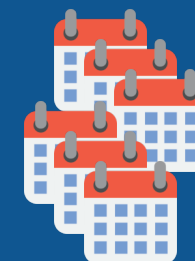
The detector kit should be placed in your main living area.

It should be hung on the wall, either from an already existing picture hook, or a temporary hook we can provide.

How long will I have my detector kit?

The sampling period is from September to the end of February.

The detector kit must remain in the same position for six months.



When will I get my results?



You will receive your results approximately 3 months after sending your detector kit back to us.