



Comhairle Contae Chorcaí
Cork County Council

Radon and Cork County Council

Date: 4th October 2023

Eddie Ronayne
Head of Safety and Wellbeing

Content

- 2008 Survey
- 2022 Survey
- 2023 Survey
- Going Forward

2008

- Out of sight out of mind
- We identified radon as a potential high risk workplace hazard in Cork due to the extent of high risk areas identified in the then RPII map.
- We researched the risks in consultation with RPII

2008

- Cork County Council placed 320 radon detectors in 79 locations across the county.
- These locations included Water/Waste-Water Treatment Plants, Pumphouses, Area Offices, Divisional HQs, Inniscarra, Model Business Park, County Hall Campus, Machinery Yards, Landfills, Libraries and Town Council Offices.

2008 Cont'd.../

- National Reference level was 400 Bq/m³ for workplaces.
- The results indicated that six locations exceeded the national reference level with levels ranging between 10 to 2,500 Bq/m³.

2008 Cont'd.../

- Remediation works

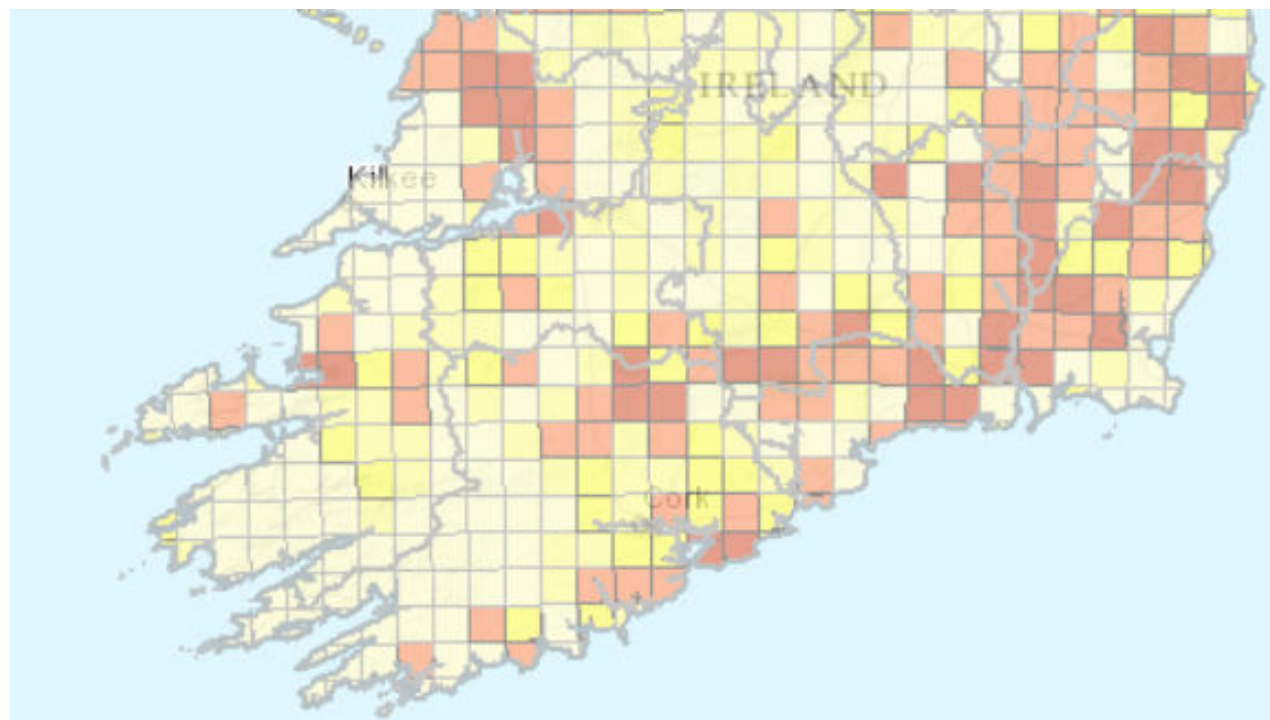
- One building:
 - Sump and extraction fan at rear of the building
 - Seal floor and joints
 - Under floor ventilation
 - Sump and extraction fan at side of building
 - New floors

2008 Cont'd.../

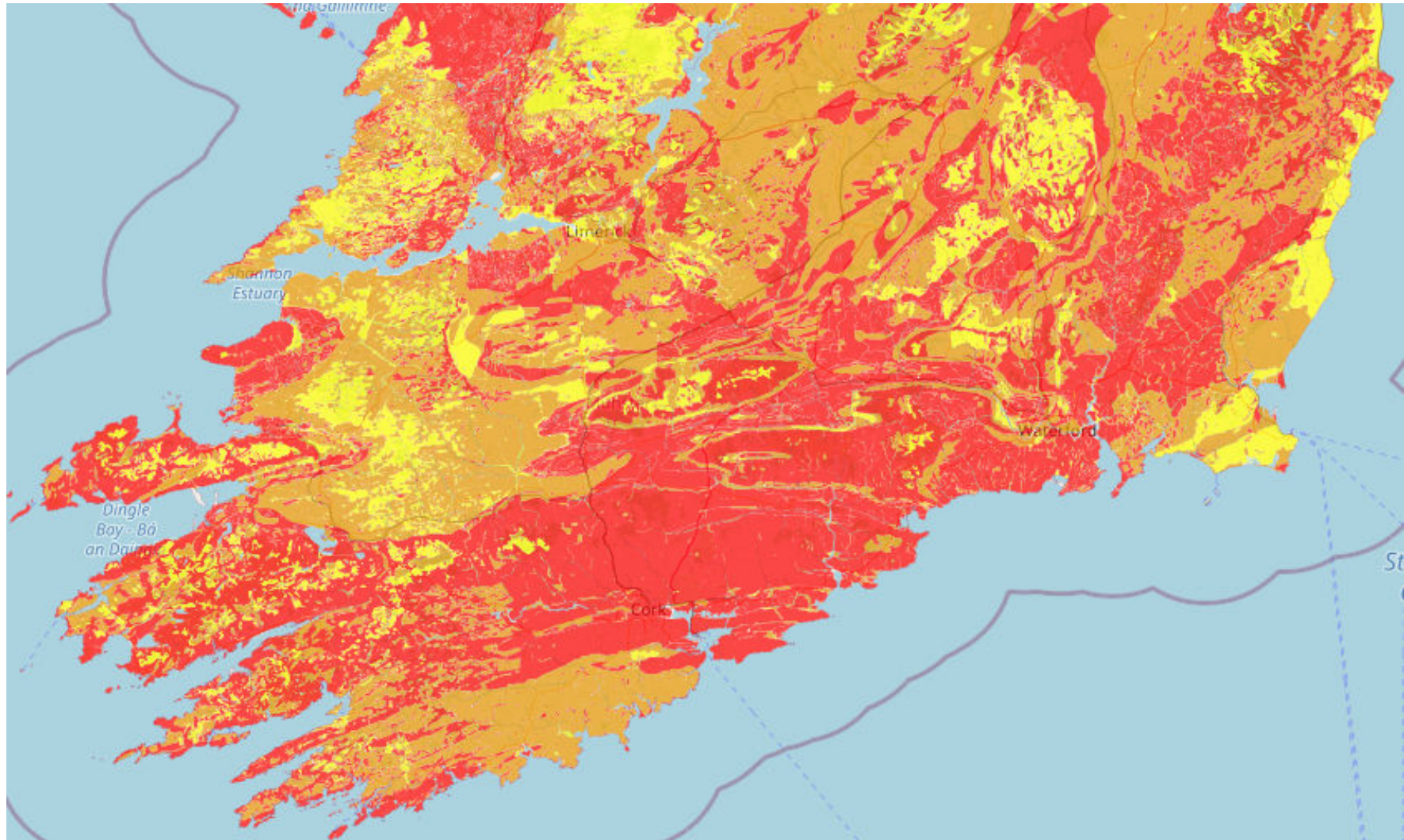
- Housing Stock (200 Bq/m³)
- Over 500 houses measured.
- High readings in some areas, e.g. Mallow.

- 26 over 800 Bq/m³
- 80 over 200 Bq/m³

2008 Cont'd.../



2008 Cont'd.../



2021/2022

- The national reference level was reduced to 300 Bq/m³ for workplaces
- In 2008 a number of measurements were between 300 and 400 Bq/m³ so we re-tested those locations.
- We re-tested the locations that exceeded the national reference level in 2008.

2022 Cont'd.../

- We broke the radon map down and identified which areas in the county were in the yellow, amber or red zones on the map and asked Directors of Service to nominate work bases within the 10km square grid of the locations in the amber and red zones on the map.
- We procured the services of a radon testing service to install the detectors.
- We placed 215 detectors in 89 locations at the end of 2021.

2022 Cont'd.../

- These locations included Libraries, Landfills, Council Offices, Fire Stations, Area Roads Offices, Pools and Visitor Attractions.
- Results in early 2022 indicated 8 locations with high readings ranging between 305 and 1108 Bq/m³.
- Following remediation works these levels were reduced to levels ranging from 13-254 Bq/m³.

2022 Cont'd.../

- Remediation works.
 - Installation of bigger fans
 - Covering of a well
- New checking system for fans, as some found to be not working.

2023

- We undertook a survey of Water Services locations which had been identified in 2022.
- We procured the services of a supplier to install the detectors.
- 125 detectors were installed in 74 locations.
- Locations included Water Treatment Plants, Reservoirs, Pump Stations and Waste-Water Pumping Stations.

Going Forward

- On 26th May 2022 the EPA produced a new radon map.
- We are in the process of cross-checking Council facility locations in the County with the new map and the areas surveyed in 2008 and 2022 and we will test locations that haven't been tested to date.

Going Forward

- Collaboration with the RPII and EPA
- 2008 LA's and 2023
- Housing stock
- We helped to facilitate collaboration between the EPA and Cork County Library Service who today launch the loan scheme of digital radon monitors across Council libraries.



**THANK YOU
FOR YOUR ATTENTION**