

QUICK-START GUIDE FOR BATTERY PRODUCERS

Complying with the Battery and Accumulator Regulations

This short guide is for organisations who supply batteries onto the Irish market for the first time either as an importer or manufacturer. This includes supply of batteries incorporated into equipment, vehicles and/or products. There are 3 types of batteries which are in scope of the regulations:

Battery type	Criteria	Codes/ applications	Uses
Portable	Sealed, can be hand carried and is neither industrial or automotive	AA, AAA, D cell, C cell and button cells.	<ul style="list-style-type: none"> ■ Mobile phones ■ Cameras ■ Remote controls ■ Torches ■ Laptops
Industrial	<ul style="list-style-type: none"> ■ Designed exclusively for industrial or professional use; ■ used as a source of power for propulsion in an electric vehicle; ■ unsealed but is not an automotive battery or accumulator; or ■ sealed but is not classified as a portable battery. 	Deep cycle, marine or traction (e.g. Golf Cart & T-105-6V battery)	<ul style="list-style-type: none"> ■ Forklift ■ Golf buggy ■ Fork lift truck ■ Batteries for emergency back-up power supply; ■ Farm fence ■ Automatic transport vehicles (e.g. motorised wheelchairs)
Automotive	Any battery or accumulator used for automotive starter, lighting or ignition power.	Wet/dry charged (e.g. SLI -12V battery)	<ul style="list-style-type: none"> ■ Car ■ Truck ■ Buses ■ Motorcycle ■ Tractors and machinery

Contact us:

ENVIRONMENTAL PROTECTION AGENCY
 An Ghníomhaireacht um Chaomhnú Comhshaoil
 PO Box 3000, Johnstown Castle, Co. Wexford, Ireland
 Telephone: +353 53 916 0600 Fax: +353 53 916 0699
 Email: info@epa.ie Website: www.epa.ie LoCall: 1890 33 55 99

Producer Obligations

Some of the main producer obligations on producers of batteries are:

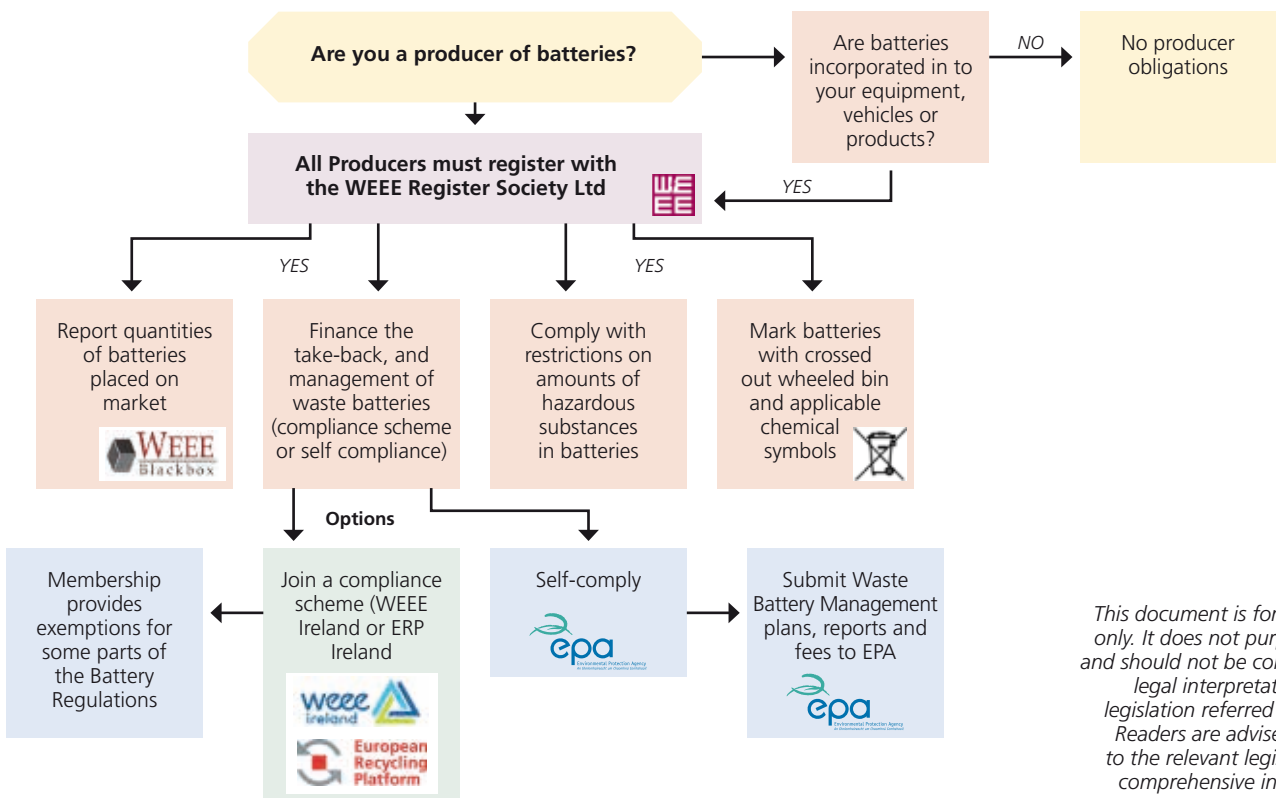
1. Register with the WEEE Register Society Limited.
2. Report amounts and types of batteries placed on the Irish market through the WEEE Register Society Ltd (WEEE Blackbox).
3. Finance the take-back, and waste management of battery waste arising from batteries placed on the market. This can be managed by either becoming a member of a compliance scheme, or by self-compliance.
4. Ensure that your batteries are compliant with regard to amounts of hazardous substances (Cadmium, lead etc.) they contain and are labelled and marked correctly.
5. There are collection targets (portables batteries only) and recycling efficiency targets set to ensure the sound environmental management of batteries.

Summary checklist for Battery Producers:

Steps	Obligation	Useful websites
Step 1	Register with WEEE Register Society Limited.	www.weeeregister.ie
Step 2	Report quantities of batteries placed on market.	www.weeeregister.ie www.weeeblackbox.ie
Step 3	Decide whether to join with a compliance scheme or self-comply.	www.weeeireland.ie or www.erp-recycling.ie or for self-compliance details, see www.batteries-enforcement.ie
Step 4	Display visibly, legibly and indelibly the crossed out wheeled bin and chemical symbols.	View Battery Regulations at: www.batteries-enforcement.ie
Step 5	Provide for treatment and recycling of batteries using best available techniques (BAT).	http://ec.europa.eu/environment/waste/batteries

For further information and a detailed set of guidance notes for battery producers, please see: www.batteries-enforcement.ie

Battery Producer Quick guide



This document is for guidance only. It does not purport to be and should not be considered a legal interpretation of the legislation referred to herein. Readers are advised to refer to the relevant legislation for comprehensive information on requirements.