

Appendix A: River Basin District Maps

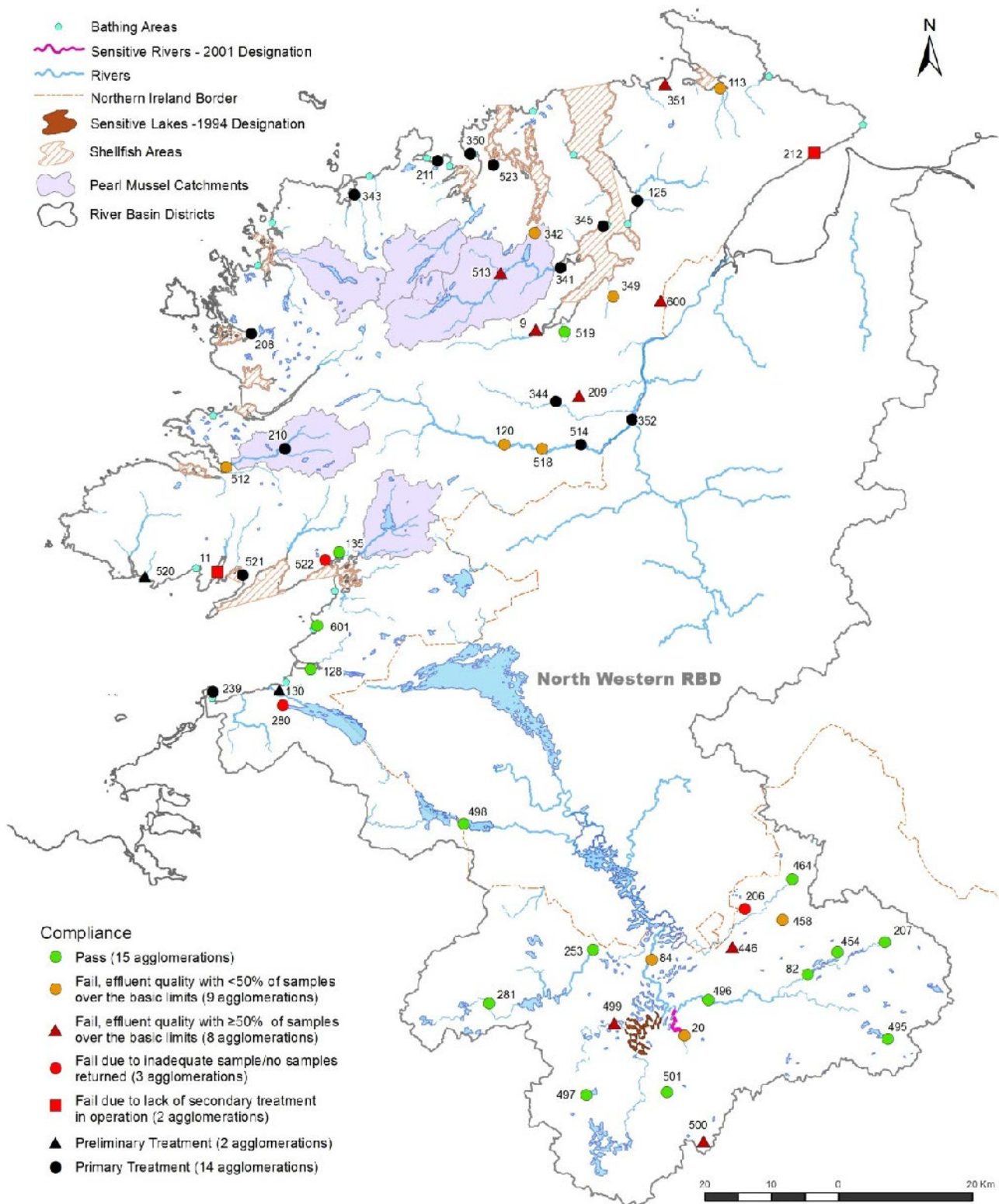
The numbers on the maps correspond to the WWDL Registration Number of each agglomeration e.g. 34 is D0034-01. The full list of numbers is located at the end of Appendix A.

To view a larger version of each map go to www.epa.ie/downloads/pubs

A pass (green circle) indicates that the agglomeration complied with effluent quality and monitoring frequency standards. Agglomerations that failed due to effluent quality are divided into those that failed with <50% of samples taken over the limits for any parameter in the Directive (amber circle) and those plants with ≥50% of samples over the limits for at least one parameter (red triangle). This separates plants with occasional failures from those with persistent effluent quality failures throughout the year.

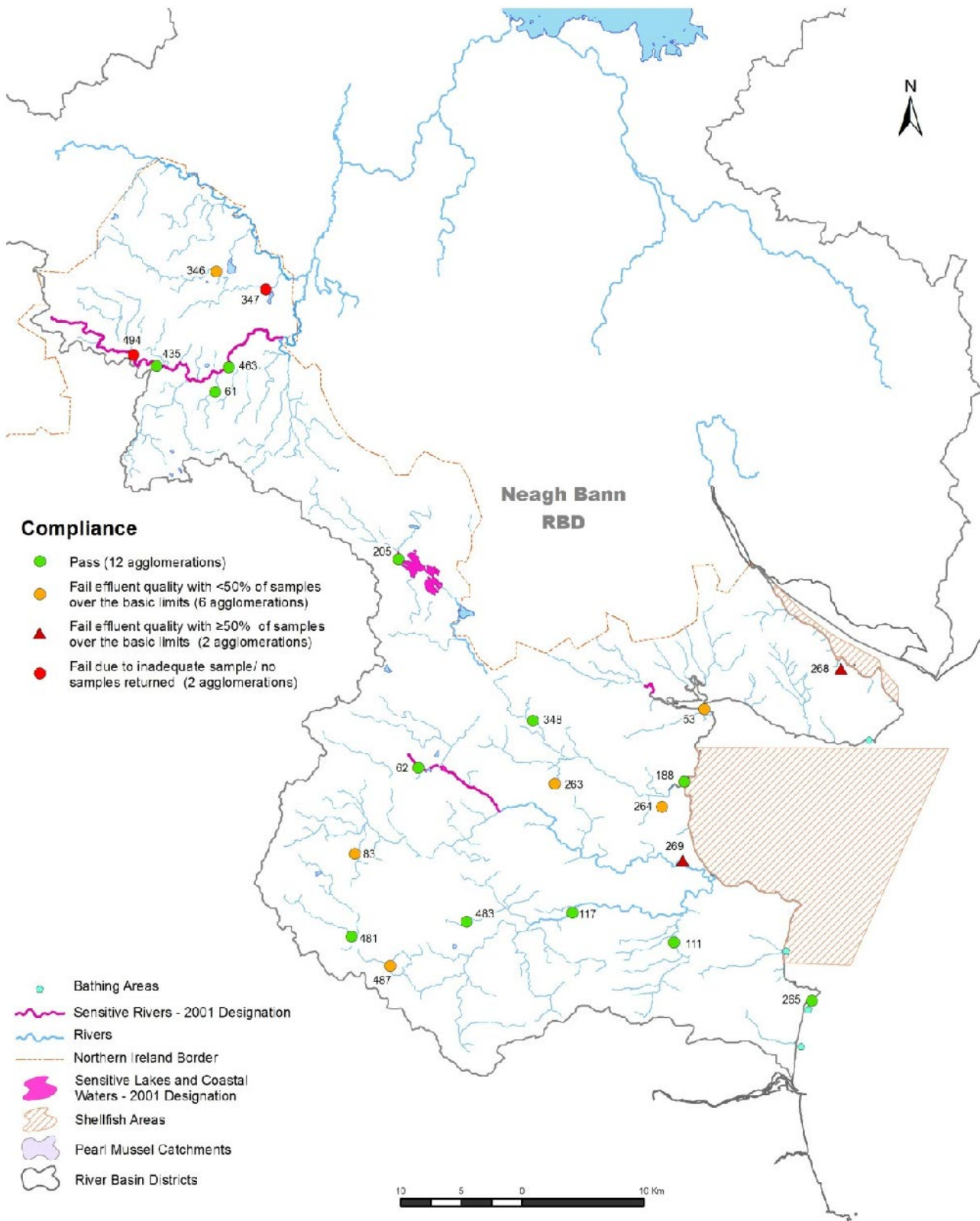
Agglomerations that failed due to lack of secondary treatment in place (as per the Directive) are also shown (red square). A fail due to inadequate sample numbers taken is shown as a red circle. Agglomerations with no treatment (black square), preliminary treatment (black triangle) and primary treatment (black circle) are also indicated on each RBD map.

Figure A-1: Assessment of waste water discharges from licensable agglomerations in the North Western River Basin District in 2009 measured against the standards set in the Urban Waste Water Treatment Directive for BOD, COD and suspended solids.¹



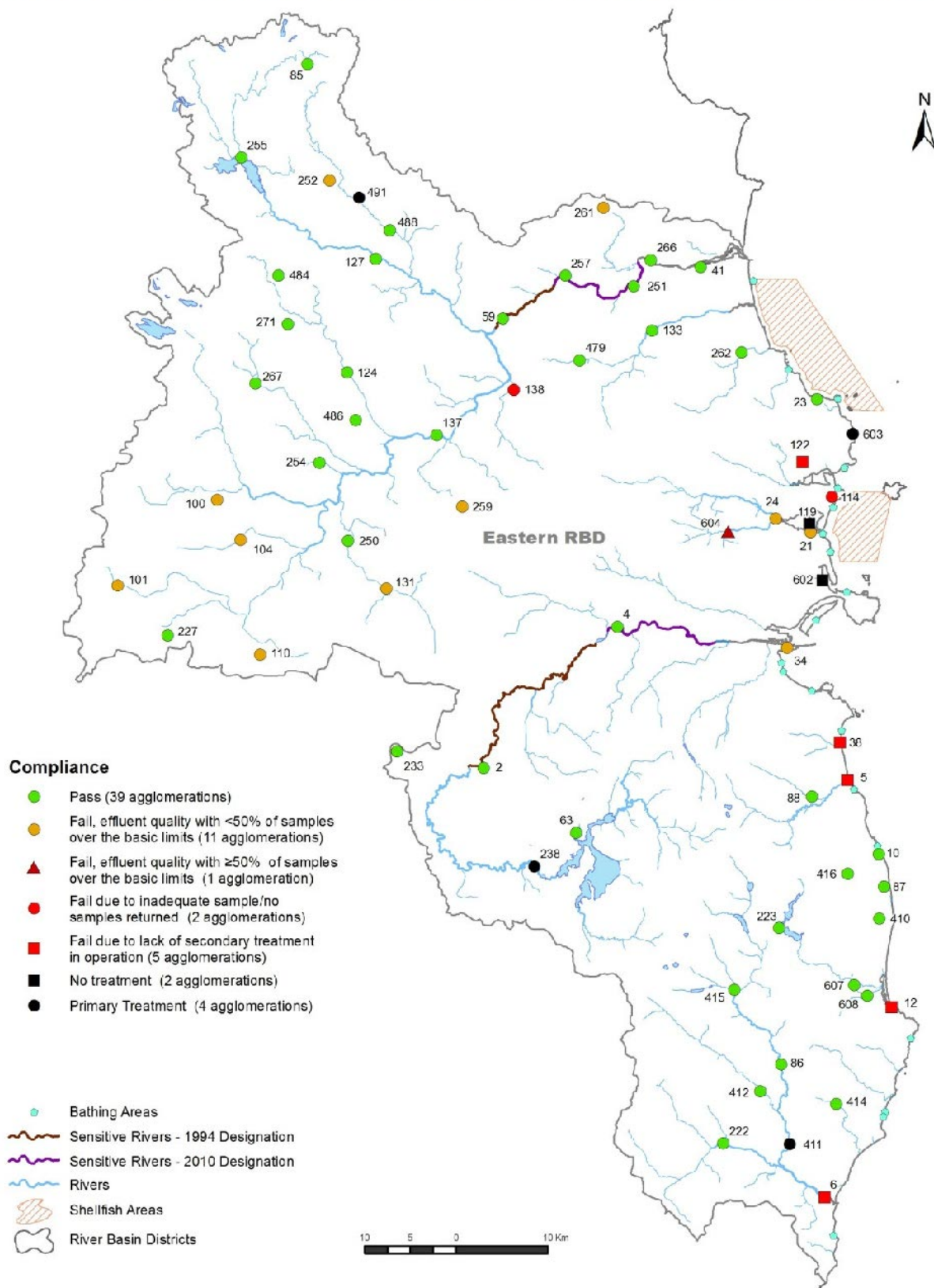
¹ Performance was assessed against the limits for BOD (25 mg/l O₂), COD (125 mg/l O₂) and suspended solids (35 mg/l) set in Table 1 of the Directive, and the sampling requirements in Annex 1.D.3 of the Directive. Compliance with the limits is not a statutory requirement for discharges from agglomerations < 2,000 p.e. discharging to freshwater or estuaries and agglomerations < 10,000 p.e. discharging to coastal waters (unless specified in the WWDL). The minimum number of samples to be collected at agglomerations < 2,000 p.e. is not specified in the Directive and was set at 6 for this assessment. The numbers on this map correspond to the WWDL Registration Number of each agglomeration e.g. 34 is D0034-01. For a complete list of numbers and their corresponding agglomeration names see Table A-1. Go to www.epa.ie/downloads to view this map.

Figure A-2: Assessment of waste water discharges from licensable agglomerations in the Neagh Bann River Basin District in 2009 measured against the standards set in the Urban Waste Water Treatment Directive for BOD, COD and suspended solids.¹



¹ Performance was assessed against the limits for BOD (25 mg/l O₂), COD (125 mg/l O₂) and suspended solids (35 mg/l) set in Table 1 of the Directive, and the sampling requirements in Annex 1.D.3 of the Directive. Compliance with the limits is not a statutory requirement for discharges from agglomerations < 2,000 p.e. discharging to freshwater or estuaries and agglomerations < 10,000 p.e. discharging to coastal waters (unless specified in the WWDL). The minimum number of samples to be collected at agglomerations < 2,000 is not specified in the Directive and was set at 6 for this assessment. The numbers on this map correspond to the WWDL Registration Number of each agglomeration e.g. 34 is D0034-01. For a complete list of numbers and their corresponding agglomeration names see Table A-1. Go to www.epa.ie/downloads to view this map.

Figure A-3: Assessment of waste water discharges from licensable agglomerations in the Eastern River Basin District in 2009 measured against the standards set in the Urban Waste Water Treatment Directive for BOD, COD and suspended solids.¹

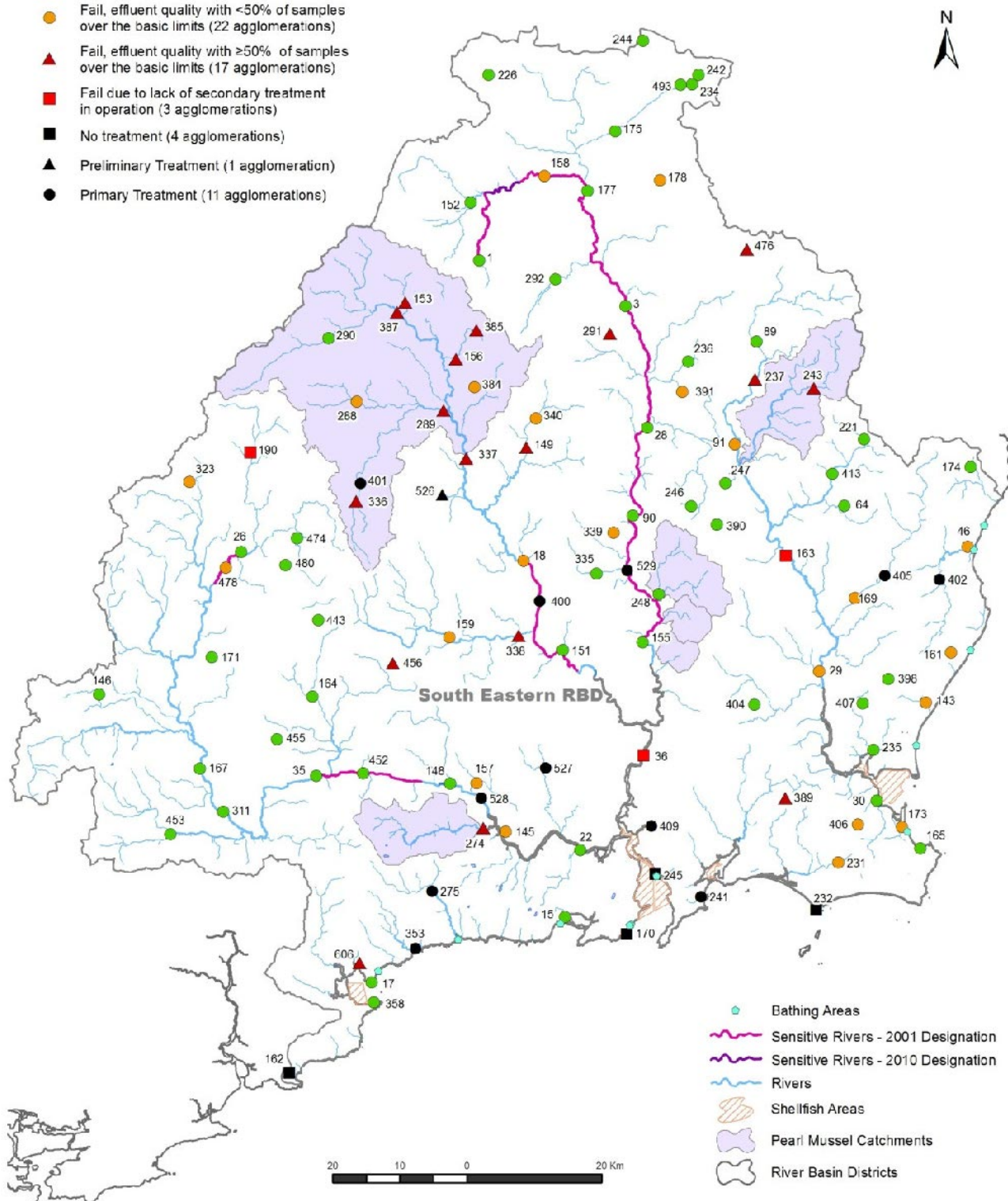


¹: Performance was assessed against the limits for BOD (25 mg/l O₂), COD (125 mg/l O₂) and suspended solids (35 mg/l) set in Table 1 of the Directive, and the sampling requirements in Annex 1.D.3 of the Directive. Compliance with the limits is not a statutory requirement for discharges from agglomerations < 2,000 p.e. discharging to freshwater or estuaries and agglomerations < 10,000 p.e. discharging to coastal waters (unless specified in the WWDL). The minimum number of samples to be collected at agglomerations < 2,000 is not specified in the Directive and was set at 6 for this assessment. The numbers on this map correspond to the WWDL Registration Number of each agglomeration e.g. 34 is D0034-01. For a complete list of numbers and their corresponding agglomeration names see Table A-1. Go to www.epa.ie/downloads to view this map.

Figure A-4: Assessment of waste water discharges from licensable agglomerations in the South Eastern River Basin District in 2009 measured against the standards set in the Urban Waste Water Treatment Directive for BOD, COD and suspended solids.¹

Compliance

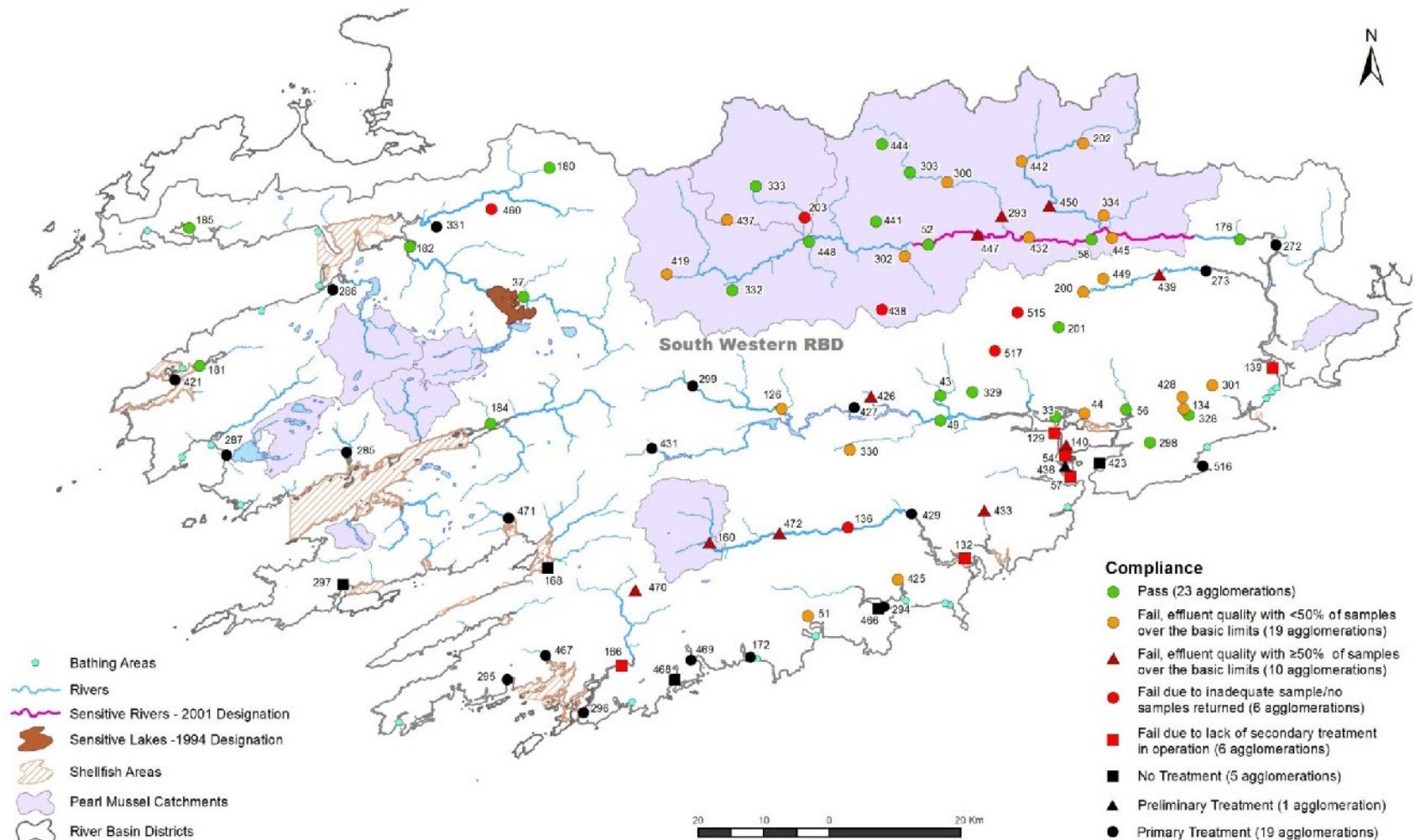
- Pass (51 agglomerations)
- Fail, effluent quality with <50% of samples over the basic limits (22 agglomerations)
- ▲ Fail, effluent quality with ≥50% of samples over the basic limits (17 agglomerations)
- Fail due to lack of secondary treatment in operation (3 agglomerations)
- No treatment (4 agglomerations)
- ▲ Preliminary Treatment (1 agglomeration)
- Primary Treatment (11 agglomerations)



¹ Performance was assessed against the limits for BOD (25 mg/l O₂), COD (125 mg/l O₂) and suspended solids (35 mg/l) set in Table 1 of the Directive, and the sampling requirements in Annex 1.D.3 of the Directive. Compliance with the limits is not a statutory requirement for discharges from agglomerations < 2,000 p.e. discharging to freshwater or estuaries and agglomerations < 10,000 p.e. discharging to coastal waters (unless specified in the WWDL). The minimum number of samples to be collected at agglomerations < 2,000 is not specified in the Directive and was set at 6 for this assessment.

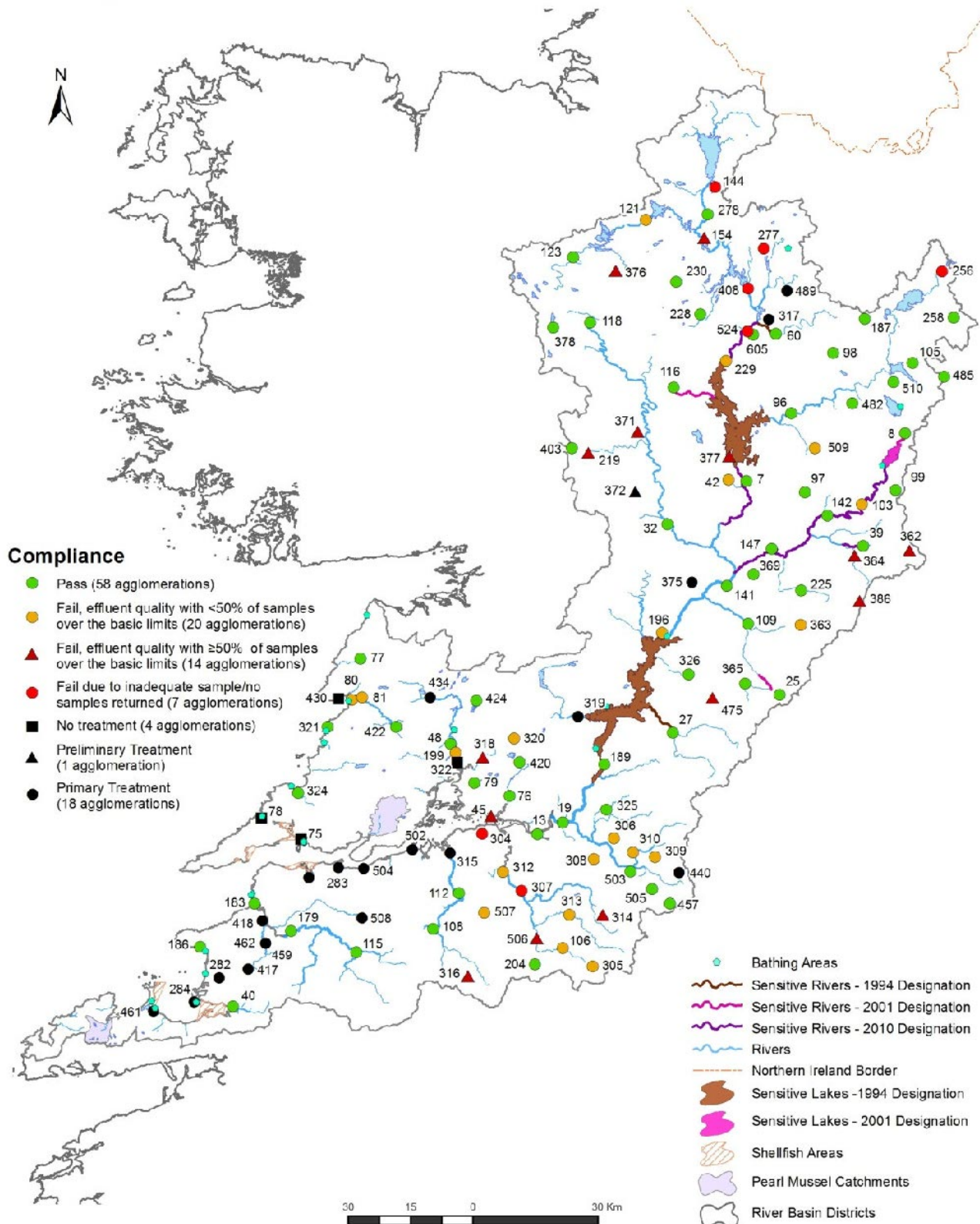
The numbers on this map correspond to the WWDL Registration Number of each agglomeration e.g. 34 is D0334-01. For a complete list of numbers and their corresponding agglomeration names see Table A-1. Go to www.epa.ie/downloads to view this map.

Figure A-5: Assessment of waste water discharges from licensable agglomerations in the South Western River Basin District in 2009 measured against the standards set in the Urban Waste Water Treatment Directive for BOD, COD and suspended solids.¹



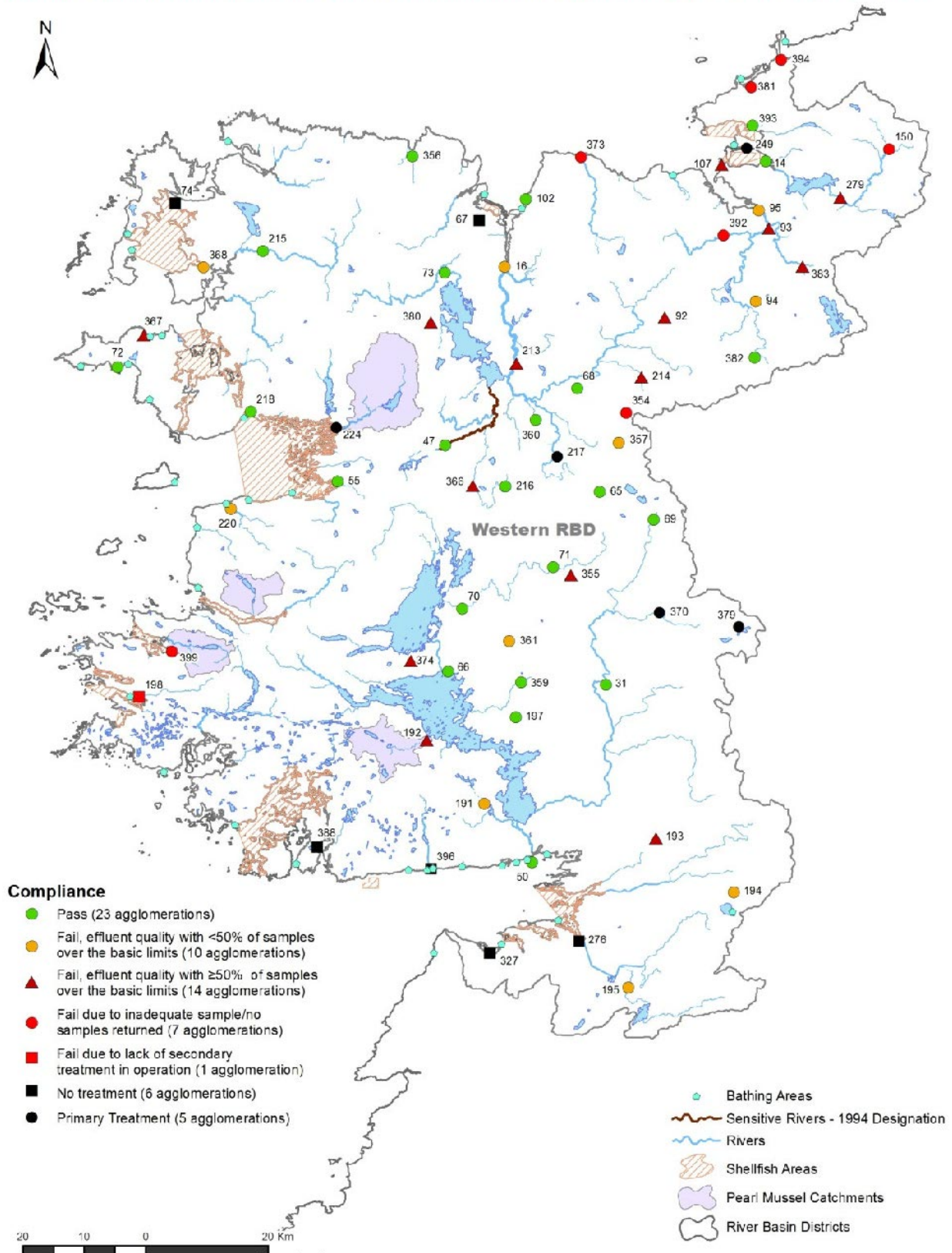
¹ Performance was assessed against the limits for BOD (25 mg/l O₂), COD (125 mg/l O₂) and suspended solids (35 mg/l) set in Table 1 of the Directive, and the sampling requirements in Annex 1.D.3 of the Directive. Compliance with the limits is not a statutory requirement for discharges from agglomerations < 2,000 p.e. discharging to freshwater or estuaries and agglomerations < 10,000 p.e. discharging to coastal waters (unless specified in the WWDL). The minimum number of samples to be collected at agglomerations < 2,000 is not specified in the Directive and was set at 6 for this assessment. The numbers on this map correspond to the WWDL Registration Number of each agglomeration e.g. 34 is D0034-01. For a complete list of numbers and their corresponding agglomeration names see Table A-1. Go to www.epa.ie/downloads to view this map.

Figure A-6: Assessment of waste water discharges from licensable agglomerations in the Shannon River Basin District in 2009 measured against the standards set in the Urban Waste Water Treatment Directive for BOD, COD and suspended solids.¹



¹ Performance was assessed against the limits for BOD (25 mg/l O₂), COD (125 mg/l O₂) and suspended solids (35 mg/l) set in Table 1 of the Directive, and the sampling requirements in Annex 1.D.3 of the Directive. Compliance with the limits is not a statutory requirement for discharges from agglomerations < 2,000 p.e. discharging to freshwater or estuaries and agglomerations < 10,000 p.e. discharging to coastal waters (unless specified in the WWDL). The minimum number of samples to be collected at agglomerations < 2,000 is not specified in the Directive and was set at 6 for this assessment. The numbers on this map correspond to the WWDL Registration Number of each agglomeration e.g. 34 is D0034-01. For a complete list of numbers and their corresponding agglomeration names see Table A-1. Go to www.epa.ie/downloads to view this map.

Figure A-7: Assessment of waste water discharges from licensable agglomerations in the Western River Basin District in 2009 measured against the standards set in the Urban Waste Water Treatment Directive for BOD, COD and suspended solids.¹



1. Performance was assessed against the limits for BOD (25 mg/l O₂), COD (125 mg/l O₂) and suspended solids (35 mg/l) set in Table 1 of the Directive, and the sampling requirements in Annex 1.D.3 of the Directive. Compliance with the limits is not a statutory requirement for discharges from agglomerations < 2,000 p.e. discharging to freshwater or estuaries and agglomerations < 10,000 p.e. discharging to coastal waters (unless specified in the WWDL). The minimum number of samples to be collected at agglomerations < 2,000 is not specified in the Directive and was set at 6 for this assessment. The numbers on this map correspond to the WWDL Registration Number of each agglomeration e.g. 34 is D0034-01. For a complete list of numbers and their corresponding agglomeration names see Table A-1. Go to www.epa.ie/downloads to view this map.

Table A-1: Licence registration numbers

WWDL Reg. No. ¹	Local Authority	Plant Name
D0001-01	Laois	Portlaoise
D0002-01	Kildare	Upper Liffey Valley
D0003-01	Kildare	Athy
D0004-01	Kildare	Leixlip
D0005-01	Wicklow	Bray
D0006-01	Wicklow	Arklow
D0007-01	Westmeath	Athlone
D0008-01	Westmeath	Mullingar
D0009-01	Donegal	Letterkenny
D0010-01	Wicklow	Greystones
D0011-01	Donegal	Killybegs
D0012-01	Wicklow	Wicklow
D0013-01	Limerick City	Limerick City
D0014-01	Sligo	Sligo
D0015-01	Waterford	Tramore
D0016-01	Mayo	Ballina
D0017-01	Waterford	Dungarvan
D0018-01	Kilkenny	Kilkenny City & Env
D0019-01	Limerick	Castletroy
D0020-01	Cavan	Cavan
D0021-01	Fingal	Malahide
D0022-01	Waterford City	Waterford City
D0023-01	Fingal	Balbriggan
D0024-01	Fingal	Swords
D0025-01	Tipperary North	Roscrea
D0026-01	Tipperary North	Thurles
D0027-01	Tipperary North	Nenagh
D0028-01	Carlow	Carlow
D0029-01	Wexford	Enniscorthy
D0030-01	Wexford	Wexford Town
D0031-01	Galway	Tuam
D0032-01	Galway	Ballinasloe
D0033-01	Cork City	Cork City
D0034-01	Dublin City	Ringsend
D0035-01	Tipperary South	Clonmel
D0036-01	Wexford	New Ross
D0037-01	Kerry	Killarney
D0038-01	Dun Laoghaire Rath	Shanganagh
D0039-01	Offaly	Tullamore
D0040-01	Kerry	Tralee
D0041-01	Louth	Drogheda
D0042-01	Roscommon	Monksland
D0043-01	Cork South	Blarney/Tower
D0044-01	Cork South	Carrigtohill
D0045-01	Clare	Shannon Town
D0046-01	Wexford	Courtown/Gorey
D0047-01	Mayo	Castlebar
D0048-01	Clare	Ennis North
D0049-01	Cork South	Ballincollig
D0050-01	Galway City	Mutton Island
D0051-01	Cork West	Clonakilty
D0052-01	Cork North	Mallow

WWDL Reg. No. ¹	Local Authority	Plant Name
D0053-01	Louth	Dundalk
D0054-01	Cork South	Cobh
D0055-01	Mayo	Westport
D0056-01	Cork South	Midleton
D0057-01	Cork South	Ringaskiddy
D0058-01	Cork North	Fermoy
D0059-01	Meath	Navan
D0060-01	Longford	Longford
D0061-01	Monaghan	Monaghan
D0062-01	Monaghan	Carrickmacross
D0063-01	Wicklow	Blessington
D0064-01	Wicklow	Carnew
D0065-01	Mayo	Knock
D0066-01	Mayo	Cong
D0067-01	Mayo	Killala
D0068-01	Mayo	Swinford
D0069-01	Mayo	Ballyhaunis
D0070-01	Mayo	Ballinrobe
D0071-01	Mayo	Claremorris
D0072-01	Mayo	Achill Island Central
D0073-01	Mayo	Crossmolina
D0074-01	Mayo	Belmullet
D0075-01	Clare	Kilrush
D0076-01	Clare	Sixmilebridge
D0077-01	Clare	Lisdoonvarna
D0078-01	Clare	Kilkee
D0079-01	Clare	Newmarket on Fergus
D0080-01	Clare	Lahinch
D0081-01	Clare	Ennistymon
D0082-01	Cavan	Cootehill
D0083-01	Cavan	Kingscourt
D0084-01	Cavan	Belturbet
D0085-01	Cavan	Bailieborough
D0086-01	Wicklow	Rathdrum
D0087-01	Wicklow	Kilcoole
D0088-01	Wicklow	Enniskerry
D0089-01	Wicklow	Baltinglass
D0090-01	Carlow	Muinebhag&Leighlinbridge
D0091-01	Carlow	Tullow
D0092-01	Sligo	Tubbercurry
D0093-01	Sligo	Collooney
D0094-01	Sligo	Ballymote
D0095-01	Sligo	Ballisadare
D0096-01	Longford	Ballymahon
D0097-01	Westmeath	Moate
D0098-01	Longford	Edgeworthstown
D0099-01	Westmeath	Tyrellspass
D0100-01	Westmeath	Killucan
D0101-01	Westmeath	Rochfortbridge
D0102-01	Sligo	Enniscrone
D0103-01	Westmeath	Kilbeggan
D0104-01	Westmeath	Kinnegad
D0105-01	Westmeath	Castlepollard
D0106-01	Limerick	Kilmallock
D0107-01	Sligo	Strandhill
D0108-01	Limerick	Newcastle West

¹ Licence registration numbers apply to both licensed agglomerations and those at application (assessment) stage.

WVDL Reg. No.¹	Local Authority	Plant Name
D0109-01	Offaly	Birr
D0110-01	Offaly	Edenderry
D0111-01	Louth	Dunleer
D0112-01	Limerick	Rathkeale
D0113-01	Donegal	Carndonagh
D0114-01	Fingal	Portrane
D0115-01	Limerick	Abbeyfeale
D0116-01	Roscommon	Roscommon
D0117-01	Louth	Ardee
D0118-01	Roscommon	Castlerea
D0119-01	Fingal	Rush
D0120-01	Donegal	Ballybofey/Stranorlar
D0121-01	Roscommon	Boyle
D0122-01	Fingal	Lusk
D0123-01	Roscommon	Ballaghderreen
D0124-01	Meath	Athboy
D0125-01	Donegal	Buncrana
D0126-01	Cork South	Macroom
D0127-01	Meath	Kells
D0128-01	Donegal	Ballyshannon
D0129-01	Cork South	Passage/Monkstown
D0130-01	Donegal	Bundoran
D0131-01	Meath	Enfield
D0132-01	Cork South	Kinsale
D0133-01	Meath	Duleek
D0134-01	Cork South	Castlemartyr
D0135-01	Donegal	Donegal Town
D0136-01	Cork South	Bandon
D0137-01	Meath	Trim
D0138-01	Meath	Dunshaughlin
D0139-01	Cork South	Youghal
D0140-01	Cork South	North Cobh SLI
D0141-01	Offaly	Banagher
D0142-01	Offaly	Clara
D0143-01	Wexford	Blackwater
D0144-01	Leitrim	Drumshanbo
D0145-01	Kilkenny	Mooncoin
D0146-01	Tipperary South	Tipperary
D0147-01	Offaly	Ferbane
D0148-01	Tipperary South	Carrick-on-Suir
D0149-01	Kilkenny	Castlecomer
D0150-01	Leitrim	Manorhamilton
D0151-01	Kilkenny	Thomastown
D0152-01	Laois	Mountmellick
D0153-01	Laois	Mountrath
D0154-01	Leitrim	Carrick-on-Shannon
D0155-01	Kilkenny	Graiguenamanagh
D0156-01	Laois	Abbeyleix
D0157-01	Kilkenny	Piltown
D0158-01	Laois	Portarlinton
D0159-01	Kilkenny	Callan
D0160-01	Cork West	Dunmanway
D0161-01	Wexford	Kilmuckridge
D0162-01	Waterford	Ardmore

WVDL Reg. No.¹	Local Authority	Plant Name
D0163-01	Wexford	Bunclody
D0164-01	Tipperary South	Fethard
D0165-01	Wexford	Rosslare Harbour
D0166-01	Cork West	Skibbereen
D0167-01	Tipperary South	Cahir
D0168-01	Cork West	Bantry
D0169-01	Wexford	Ferns South
D0170-01	Waterford	Dunmore East
D0171-01	Tipperary South	Cashel
D0172-01	Cork West	Rosscarbery/Owenahinch
D0173-01	Wexford	Rosslare Strand
D0174-01	Wexford	Coolgreany
D0175-01	Kildare	Rathangan
D0176-01	Waterford	Lismore
D0177-01	Kildare	Monasterevin
D0178-01	Kildare	Kildare Town
D0179-01	Kerry	Listowel
D0180-01	Kerry	Castleisland
D0181-01	Kerry	Cahersiveen
D0182-01	Kerry	Killorglin
D0183-01	Kerry	Ballyunion
D0184-01	Kerry	Kenmare
D0185-01	Kerry	An Daingean
D0186-01	Kerry	Ballyheigue
D0187-01	Longford	Granard
D0188-01	Louth	Blackrock
D0189-01	Tipperary North	Ballina
D0190-01	Tipperary North	Templemore
D0191-01	Galway	Moycullen
D0192-01	Galway	Oughterard
D0193-01	Galway	Athenry
D0194-01	Galway	Loughrea
D0195-01	Galway	Gort
D0196-01	Galway	Portumna
D0197-01	Galway	Headford
D0198-01	Galway	Clifden
D0199-01	Clare	Clareabbey
D0200-01	Cork North	Rathcormac
D0201-01	Cork North	Watergrasshill
D0202-01	Cork North	Mitchelstown
D0203-01	Cork North	Kanturk
D0204-01	Cork North	Charleville
D0205-01	Monaghan	Castleblayney
D0206-01	Monaghan	Clones
D0207-01	Monaghan	Ballybay
D0208-01	Donegal	Dungloe
D0209-01	Donegal	Raphoe
D0210-01	Donegal	Glenties
D0211-01	Donegal	Dunfanaghy/Portnablagh
D0212-01	Donegal	Moville
D0213-01	Mayo	Foxford
D0214-01	Mayo	Charlestown
D0215-01	Mayo	Bangor Erris
D0216-01	Mayo	Balla

WVDL Reg. No.¹	Local Authority	Plant Name
D0217-01	Mayo	Kiltimagh
D0218-01	Mayo	Mallaranny
D0219-01	Galway	Mountbellew
D0220-01	Mayo	Louisburgh
D0221-01	Wicklow	Tinahely
D0222-01	Wicklow	Aughrim
D0223-01	Wicklow	Roundwood
D0224-01	Mayo	Newport
D0225-01	Offaly	Kilcormac
D0226-01	Offaly	Daingean
D0227-01	Offaly	Rhode
D0228-01	Roscommon	Strokestown
D0229-01	Roscommon	Ballyleague
D0230-01	Roscommon	Elphin
D0231-01	Wexford	Bridgetown
D0232-01	Wexford	Kilmore Quay
D0233-01	Kildare	Kilmeague
D0234-01	Kildare	Robertstown
D0235-01	Wexford	Castlebridge
D0236-01	Kildare	Castledermot
D0237-01	Carlow	Rathvilly
D0238-01	Kildare	Ballymore Eustace
D0239-01	Sligo	Mullaghmore
D0240-01	Carlow	Rathoe
D0241-01	Wexford	Fetherd-on-Sea
D0242-01	Kildare	Coill Dubh
D0243-01	Carlow	Hacketstown
D0244-01	Kildare	Derrinturn
D0245-01	Wexford	Duncannon
D0246-01	Carlow	Fenagh
D0247-01	Carlow	Ballon
D0248-01	Carlow	Borris
D0249-01	Sligo	Rosses Point
D0250-01	Meath	Longwood
D0251-01	Meath	Donore
D0252-01	Cavan	Mullagh
D0253-01	Cavan	Ballyconnell
D0254-01	Meath	Ballivor
D0255-01	Cavan	Virginia
D0256-01	Cavan	Ballyjamesduff
D0257-01	Meath	Slane
D0258-01	Meath	Oldcastle
D0259-01	Meath	Summerhill
D0260-01	Louth	Knockbridge
D0261-01	Louth	Collon
D0262-01	Meath	Stamullen
D0263-01	Louth	Louth Village
D0264-01	Louth	Dromiskin
D0265-01	Louth	Clogherhead
D0266-01	Louth	Tullyallen
D0267-01	Westmeath	Delvin
D0268-01	Louth	Carlingford
D0269-01	Louth	Castlebellingham
D0270-01	Louth	Tallanstown

WVDL Reg. No.¹	Local Authority	Plant Name
D0271-01	Westmeath	Clonmellon
D0272-01	Waterford	Cappoquin
D0273-01	Waterford	Tallow
D0274-01	Waterford	Portlaw
D0275-01	Waterford	Kilmacthomas
D0276-01	Galway	Kinvara
D0277-01	Leitrim	Mohill
D0278-01	Leitrim	Leitrim Village
D0279-01	Leitrim	Dromahair
D0280-01	Leitrim	Kinlough
D0281-01	Leitrim	Ballinamore
D0282-01	Kerry	Ardfert
D0283-01	Kerry	Tarbert
D0284-01	Kerry	Fenit
D0285-01	Kerry	Sneem
D0286-01	Kerry	Glenbeigh
D0287-01	Kerry	Waterville
D0288-01	Laois	Rathdowney
D0289-01	Laois	Durrow
D0290-01	Laois	Borris-in-Ossory
D0291-01	Laois	Ballylinan
D0292-01	Laois	Stradbally
D0293-01	Cork North	Castletownroche
D0294-01	Cork West	Courtmacsherry
D0295-01	Cork West	Schull
D0296-01	Cork West	Baltimore
D0297-01	Cork West	Castletownbere
D0298-01	Cork South	Cloyne
D0299-01	Cork South	Ballymakeera
D0300-01	Cork North	Doneraile
D0301-01	Cork South	Kileens
D0302-01	Cork North	Dromahane
D0303-01	Cork North	Buttevant
D0304-01	Limerick	Pallaskenry
D0305-01	Limerick	Kilfinnane
D0306-01	Limerick	Murroe
D0307-01	Limerick	Croom
D0308-01	Limerick	Cahercornlish
D0309-01	Limerick	Doon
D0310-01	Limerick	Cappamore
D0311-01	Tipperary South	Ardfinnan
D0312-01	Limerick	Adare
D0313-01	Limerick	Bruff
D0314-01	Limerick	Hospital
D0315-01	Limerick	Askeaton
D0316-01	Limerick	Dromcollagher
D0317-01	Longford	Newtownforbes
D0318-01	Clare	Quin
D0319-01	Clare	Scarriff
D0320-01	Clare	Tulla
D0321-01	Clare	Milltown Malbay
D0322-01	Clare	Clarecastle
D0323-01	Tipperary North	Borrisoleigh
D0324-01	Clare	Doonbeg

WWDL Reg. No.¹	Local Authority	Plant Name
D0325-01	Tipperary North	Newport
D0326-01	Tipperary North	Borrisokane
D0327-01	Clare	Ballyvaughan
D0328-01	Cork South	Ladysbridge
D0329-01	Cork South	Killeagh
D0330-01	Cork South	Cloughduv
D0331-01	Kerry	Milltown
D0332-01	Cork North	Millstreet
D0333-01	Cork North	Newmarket
D0334-01	Cork North	Kilworth
D0335-01	Kilkenny	Gowran
D0336-01	Kilkenny	Urlingford
D0337-01	Kilkenny	Ballyragget
D0338-01	Kilkenny	Stonyford
D0339-01	Kilkenny	Paulstown
D0340-01	Kilkenny	Clogh-Moneenroe
D0341-01	Donegal	Ramelton
D0342-01	Donegal	Milford
D0343-01	Donegal	Falcarragh
D0344-01	Donegal	Convoy
D0345-01	Donegal	Rathmullan
D0346-01	Monaghan	Emyvale
D0347-01	Monaghan	Glaslough
D0348-01	Monaghan	Inniskeen
D0349-01	Donegal	Newtowncunningham
D0350-01	Donegal	Downings
D0351-01	Donegal	Ballyliffen
D0352-01	Donegal	Lifford
D0353-01	Waterford	Stradbally
D0354-01	Mayo	Knock Airport
D0355-01	Mayo	Ballindine
D0356-01	Mayo	Ballycastle
D0357-01	Mayo	Kilkelly Swinford
D0358-01	Waterford	Ballinagoul
D0359-01	Mayo	Shrule
D0360-01	Mayo	Bohola
D0361-01	Mayo	Kilmaine
D0362-01	Offaly	Ballinagar
D0363-01	Offaly	Kinnity
D0364-01	Offaly	Mucklagh
D0365-01	Offaly	Shinrone
D0366-01	Mayo	Belcarra
D0367-01	Mayo	Doogort
D0368-01	Mayo	Gweesalia
D0369-01	Offaly	Cloghan
D0370-01	Galway	Dunmore
D0371-01	Galway	Ballygar
D0372-01	Galway	Ahascragh
D0373-01	Sligo	Easkey
D0374-01	Galway	Clonbur
D0375-01	Galway	Eyrecourt
D0376-01	Roscommon	Frenchpark
D0377-01	Roscommon	Hodson Bay
D0378-01	Roscommon	Ballinlough

WWDL Reg. No.¹	Local Authority	Plant Name
D0379-01	Galway	Glenamaddy
D0380-01	Mayo	Lahardane
D0381-01	Sligo	Grange
D0382-01	Sligo	Gurteen
D0383-01	Sligo	Riverstown
D0384-01	Laois	Ballinakill
D0385-01	Laois	Ballyroan
D0386-01	Laois	Clonaslee
D0387-01	Laois	Castletown
D0388-01	Galway	Carraroe
D0389-01	Wexford	Taghmon
D0390-01	Carlow	Myshal
D0391-01	Carlow	Palatine
D0392-01	Sligo	Coolaney
D0393-01	Sligo	Carney
D0394-01	Sligo	Cliffoney
D0395-01	Carlow	Clonegal
D0396-01	Galway	Spiddal
D0397-01	Wexford	Tagoat
D0398-01	Wexford	Ballaghkeen
D0399-01	Galway	Letterfrack
D0400-01	Kilkenny	Bennestsbridge
D0401-01	Kilkenny	Johnstown
D0402-01	Wexford	Ballycanew
D0403-01	Galway	Moylough
D0404-01	Wexford	Clonroche
D0405-01	Wexford	Camolin
D0406-01	Wexford	Piercetown
D0407-01	Wexford	Ballymurn
D0408-01	Roscommon	Roosky
D0409-01	Wexford	Campile
D0410-01	Wicklow	Newcastle
D0411-01	Wicklow	Avoca
D0412-01	Wicklow	Ballinaclash
D0413-01	Wicklow	Shillelagh
D0414-01	Wicklow	Redcross
D0415-01	Wicklow	Laragh
D0416-01	Wicklow	Kilpedder
D0417-01	Kerry	Abbeydorney
D0418-01	Kerry	Ballyduff
D0419-01	Kerry	Rathmore
D0420-01	Clare	Kilkishen
D0421-01	Kerry	Knightstown
D0422-01	Clare	Inagh
D0423-01	Cork South	Whitegate/Aghada
D0424-01	Clare	Crusheen (Galvins)
D0425-01	Cork South	Kilbrittan
D0426-01	Cork South	Dripsey
D0427-01	Cork South	Coachford
D0428-01	Cork South	Mogeely
D0429-01	Cork South	Innishannon
D0430-01	Clare	Liscannor
D0431-01	Cork South	Ballingeary
D0432-01	Cork North	Ballyhooley

WWDL Reg. No.¹	Local Authority	Plant Name
D0433-01	Cork South	Riverstick
D0434-01	Clare	Corofin
D0435-01	Monaghan	Ballinode
D0436-01	Cork South	Ringaskiddy Village
D0437-01	Cork North	Boherbue
D0438-01	Cork North	Bweeng
D0439-01	Cork North	Conna
D0440-01	Tipperary South	Cappawhite
D0441-01	Cork North	Ballyclough
D0442-01	Cork North	Kildorrery
D0443-01	Tipperary South	Killenaule
D0444-01	Cork North	Churchtown
D0445-01	Cork North	Clondulane
D0446-01	Monaghan	Scotshouse
D0447-01	Cork North	Killavullen
D0448-01	Cork North	Banteer
D0449-01	Cork North	Castlelyons
D0450-01	Cork North	Glanworth
D0452-01	Tipperary South	Kilsheelan
D0453-01	Tipperary South	Clogheen
D0454-01	Monaghan	Rockorrey
D0455-01	Tipperary South	Ballyclerihan
D0456-01	Tipperary South	Mullinahone
D0457-01	Tipperary South	Limerick Junction
D0458-01	Monaghan	Newbliss
D0459-01	Kerry	Ballylongford
D0460-01	Kerry	Fieries
D0461-01	Kerry	Castlegregory
D0462-01	Kerry	Lixnaw
D0463-01	Monaghan	Knockaconny
D0464-01	Monaghan	Smithboro
D0465-01	Monaghan	Annyalla
D0466-01	Cork West	Timoleague
D0467-01	Cork West	Ballydehob
D0468-01	Cork West	Castletownshend
D0469-01	Cork West	Unionhall
D0470-01	Cork West	Drimoleague
D0471-01	Cork West	Glengariff
D0472-01	Cork West	Ballineen/Enniskeane
D0473-01	Monaghan	Doohamlet
D0474-01	Tipperary North	Twomile Borris
D0475-01	Tipperary North	Cloughjordan
D0476-01	Wicklow	Dunlavin
D0477-01	Wicklow	Stratford
D0478-01	Tipperary North	Holycross
D0479-01	Meath	Kentstown
D0480-01	Tipperary North	Littleton
D0481-01	Meath	Kilmainhamwood
D0482-01	Westmeath	Ballynacarrigy
D0483-01	Meath	Drumconrath
D0484-01	Meath	Crossakeel
D0485-01	Westmeath	Collinstown
D0486-01	Meath	Kildalkey
D0487-01	Meath	Nobber

WWDL Reg. No.¹	Local Authority	Plant Name
D0488-01	Meath	Carlanstown
D0489-01	Longford	Drumlsh
D0490-01	Meath	Rathmolyon
D0491-01	Meath	Moynalty
D0492-01	Meath	Kilcloon
D0493-01	Kildare	Allenwood
D0494-01	Monaghan	Scotstown
D0495-01	Cavan	Shercock
D0496-01	Cavan	Ballyhaise
D0497-01	Cavan	Arvagh
D0498-01	Cavan	Blacklion
D0499-01	Cavan	Killeshandra
D0500-01	Cavan	Kilnaleck
D0501-01	Cavan	Ballinagh
D0502-01	Limerick	Foynes
D0503-01	Limerick	Pallasgreen
D0504-01	Limerick	Glin
D0505-01	Limerick	Oola
D0506-01	Limerick	Bruree
D0507-01	Limerick	Ballingary
D0508-01	Limerick	Athea
D0509-01	Westmeath	Ballymore
D0510-01	Westmeath	Multyfarnham
D0511-01	Mayo	Achill Sound
D0512-01	Donegal	Ardara
D0513-01	Donegal	Kilmacrennan
D0514-01	Donegal	Castlefinn
D0515-01	Cork South	Glenville
D0516-01	Cork South	Ballycotton
D0517-01	Cork South	Carrignavar
D0518-01	Donegal	Killygordon
D0519-01	Donegal	Manorcunningham
D0520-01	Donegal	Kilcar
D0521-01	Donegal	Dunkineoley
D0522-01	Donegal	Mountcharles
D0523-01	Donegal	Carrigart
D0524-01	Roscommon	Tarmonbarry
D0525-01	Kilkenny	Kilmacow
D0526-01	Kilkenny	Freshford
D0527-01	Kilkenny	Mullinavat
D0528-01	Kilkenny	Fiddown
D0529-01	Kilkenny	Goresbridge
D0530-01	Kilkenny	Ballyhale-Knocktopher
600²	Donegal	Killea
601²	Donegal	Rossnowlagh
602²	Fingal	Howth

² Numbers 600-608 are not official licence registration numbers but were assigned on an arbitrary basis to those locations that were stand-alone agglomerations in 2008 and 2009 but have since become part of another WWDL application e.g. Ashford (607) and Rathnew (608) became part of Wicklow Town agglomeration (D0012-01) in 2010.

WWDL Reg. No.¹	Local Authority	Plant Name
603²	Fingal	Loughshinny
604²	Fingal	Toberburr
605²	Longford	Clondra
606²	Waterford	Ballinroad
607²	Wicklow	Ashford
608²	Wicklow	Rathnew

Appendix B: County Reports

Explanatory Note on Colour Coding and Reporting of Effluent Quality

Column 2 in each table explains the pass/fail status of each agglomeration where, P = Pass; FQ = Fail due to effluent quality standards; FN = Fail due to insufficient sample numbers; FQN = Fail due to effluent quality and sample numbers and NR = no results received.

If the agglomeration name is highlighted in **Red** it did not meet the overall requirements of the UWWTD.

If the agglomeration name is highlighted in **Blue** it is under 2,000 p.e. discharging to freshwater or estuarine water or under 10,000 p.e discharging to coastal waters and has been deemed by the EPA to have effluent quality that is not adequate and/or has taken less than the recommended number of samples.

Bold text is used to highlight samples failing to meet the effluent quality standards at each individual plant. If column two for each parameter (i.e. BOD, COD and TSS) in the county tables presented in Appendix B is in bold then this indicates the stated number of samples have exceeded the lower limit of the Directive and the plant has not complied with the Directive requirements. A limited number of samples can fail the lower limit provided that no sample fails the upper limit. If column three for each parameter is in bold, the plant has not complied with the mandatory standard requirements of the Directive.

Bold text is also used to indicate that an insufficient number of samples were taken for the particular plant. The rules governing the sampling requirements for each class of plant above 2,000 p.e. discharging to freshwater or estuaries or above 10,000 p.e. discharging to coastal waters are set out in the Directive and these have been taken into account on an individual basis when evaluating the compliance with the sampling frequencies at each plant. For plants below 2,000 p.e. discharging to freshwater or estuaries or plants below 10,000 p.e. discharging to coastal waters the EPA recommended number of samples is six per annum.

Agglomerations where basic treatment or no treatment was in operation at the end of the reporting period are also listed in Appendix B. **Red font** is used to show the 17 Agglomerations where secondary treatment is required by the Directive but was not in operation at the end of 2009.

For further information on how sample compliance is determined download the report on Urban Waste Water for the years 2004/2005 at the following link:

http://www.epa.ie/downloads/pubs/water/wastewater/uwwt_report_2004_2005.pdf.

CARLOW COUNTY COUNCIL

Effluent Quality from Secondary Waste Water Treatment Plants in 2009

Plant Name	Pass/ Fail 2009	Agglom. PE	Plant PE	Present Treatment	Discharge To	Sensitive Yes/No	BOD No. of Samples	BOD No. of samples >25mg/l	BOD No. of samples >50mg/l	COD No. of Samples	COD No. of samples >125mg/l	COD No. of samples >250mg/l	TSS No. of Samples	TSS No. of samples >35mg/l	TSS No. of samples >87.5 mg/l
< 500 PE															
Rathoe	NR	100	250	Secondary treatment only	Freshwater (R)	No	0	0	0	0	0	0	0	0	0
Clonegal	NR	200	200	Secondary treatment only	Freshwater (R)	No	0	0	0	0	0	0	0	0	0
From 500 to 999 PE															
Hacketstown	FQ	1,100	600	Secondary treatment only	Freshwater (R)	Yes	7	7	7	7	7	5	7	6	2
Myshal	P	500	800	Secondary treatment with NR	Freshwater (R)	No	14	0	0	14	0	0	14	1	0
Rathvilly	FQ	1,100	600	Secondary treatment only	Freshwater (R)	Yes	8	8	8	8	8	8	8	8	5
From 1,000 to 1,999 PE															
Ballon	P	750	1,200	Secondary treatment with NR	Freshwater (R)	No	13	1	0	13	0	0	13	1	0
Borris	P	1,100	1,500	Secondary treatment only	Freshwater (R)	Yes	9	1	0	9	0	0	9	0	0
Fenagh	P	550	1500	Secondary treatment with NR	Freshwater (R)	No	13	0	0	13	0	0	13	0	0
Palatine	FQ	600	1,000	Secondary treatment only	Freshwater (R)	No	12	0	0	12	0	0	12	1	1
From 2,000 to 10,000 PE															
Muinebheag	P	4,000	4,500	Secondary treatment only	Freshwater (R)	Yes	14	0	0	14	0	0	14	0	0
Tullow	FQ	4,800	4,000	Secondary treatment only	Freshwater (R)	Yes	13	3	2	13	1	0	13	1	0
From 15,001 to 50,000 PE															
Carlow (Mortarstown)	P	31,500	36,000	Secondary treatment with NR	Freshwater (R)	Yes	14	0	0	14	0	0	14	0	0

CAVAN COUNTY COUNCIL

Effluent Quality from Secondary Waste Water Treatment Plants in 2009

Plant Name	Pass/ Fail 2009	Agglom. PE	Plant PE	Present Treatment	Discharge To	Sensitive Yes/No	BOD No. of Samples	BOD No. of samples >25mg/l	BOD No. of samples >50mg/l	COD No. of Samples	COD No. of samples >125mg/l	COD No. of samples >250mg/l	TSS No. of Samples	TSS No. of samples >35mg/l	TSS No. of samples >87.5 mg/l
From 500 to 999 PE															
Ballyhaise	P	780	905	Secondary treatment with NR	Freshwater (R)	No	6	0	0	6	0	0	6	0	0
Blacklion	P	618	990	Secondary treatment only	Freshwater (L)	No	7	0	0	7	0	0	7	0	0
Kilnaleck	FQ	831	650	Secondary treatment only	Freshwater (R)	No	6	4	2	6	2	1	6	2	1
From 1,000 to 1,999 PE															
Arvagh	P	903	1,200	Secondary treatment with NR	Freshwater (R)	No	6	0	0	6	0	0	6	0	0
Ballinagh	P	1,483	1,800	Secondary treatment with NR	Freshwater (R)	No	6	1	0	6	0	0	6	0	0
Ballyconnell	P	1,608	1,500	Secondary treatment with NR	Freshwater (R)	No	6	0	0	6	0	0	6	0	0
Killeshandra	FQ	922	1,000	Secondary treatment only	Freshwater (L)	No	6	5	3	6	1	0	6	3	0
Shercock	P	812	1,000	Secondary treatment with NR	Freshwater (L)	No	6	0	0	6	0	0	6	0	0
From 2,000 to 10,000 PE															
Bailieborough	P	2,577	2,500	Secondary treatment with NR	Freshwater (R)	No	13	1	0	13	2	0	13	1	0
Ballyjamesduff	FN	1,930	2,200	Secondary treatment with NR	Freshwater (R)	No	6	0	0	6	0	0	6	0	0
Belturbet	FQ	2,236	4,000	Secondary treatment with NR	Freshwater (R)	No	13	2	2	14	2	0	14	3	0
Cootehill	P	2,072	2,756	Secondary treatment with NR	Freshwater (R)	No	13	0	0	13	0	0	13	1	0
Kingscourt	FQ	2,335	2,400	Secondary treatment only	Freshwater (R)	No	13	1	1	13	2	0	13	1	0
Mullagh	FQN	1,080	3,000	Secondary treatment with NR	Freshwater (R)	No	6	1	1	6	1	0	6	1	0
Virginia	P	2,363	2,000	Secondary treatment with NR	Freshwater (L)	No	12	1	0	12	0	0	12	1	0
From 15,001 to 50,000 PE															
Cavan	FQ	16,000	22,000	Secondary treatment with NR	Freshwater (R)	Yes	19	8	1	13	1	0	19	4	3

CLARE COUNTY COUNCIL

Effluent Quality from Secondary Waste Water Treatment Plants in 2009

Plant Name	Pass/ Fail 2009	Agglom. PE	Plant PE	Present Treatment	Discharge To	Sensitive Yes/No	BOD No. of Samples	BOD No. of samples >25mg/l	BOD No. of samples >50mg/l	COD No. of Samples	COD No. of samples >125mg/l	COD No. of samples >250mg/l	TSS No. of Samples	TSS No. of samples >35mg/l	TSS No. of samples >87.5 mg/l
From 500 to 999 PE															
Crusheen (Galvins)	P	500	500	Secondary treatment only	Freshwater (R)	No	6	1	0	6	1	0	6	1	0
Inagh	P	500	500	Secondary treatment only	Freshwater (R)	No	7	0	0	7	0	0	7	0	0
Kilkishen	P	750	750	Secondary treatment only	Freshwater (L)	No	12	1	0	12	0	0	12	0	0
Quin	FQ	1,200	740	Secondary treatment only	Freshwater (R)	No	10	8	4	11	6	3	11	9	2
From 1,000 to 1,999 PE															
Doonbeg	P	1,000	1,000	Secondary treatment only	Coastal Water	No	11	1	0	11	0	0	11	0	0
Milltown/Malbay	P	1,360	1,360	Secondary treatment only	Freshwater (R)	No	12	0	0	12	0	0	12	0	0
From 2,000 to 10,000 PE															
Ennis South	FQ	4,000	4,000	Secondary treatment only	Freshwater (R)	No	12	1	1	12	1	0	12	2	1
Ennistymon	FQ	2,000	2,000	Secondary treatment only	Freshwater (R)	No	24	5	1	24	2	0	24	4	0
Lahinch	FQ	8,400	8,400	Secondary treatment only	Freshwater (R)	No	12	1	1	12	0	0	12	0	0
Lisdoonvarna	P	2,500	5,000	Secondary treatment with NR	Freshwater (R)	No	12	0	0	12	0	0	12	0	0
Newmarket-on-Fergus	P	3,500	3,500	Secondary treatment only	Freshwater (L)	No	12	0	0	12	0	0	12	2	0
Sixmilebridge	P	1,500	6,000	Secondary treatment only	Freshwater (R)	No	13	0	0	13	0	0	13	1	0
Tulla	FQ	720	2,000	Secondary treatment only	Freshwater (R)	No	12	1	1	12	1	0	12	3	0
From 10,001 to 15,000 PE															
Shannon Town	FQ	12,500	12,500	Secondary treatment only	Estuarine	No	13	10	6	13	5	1	13	6	3
From 15,001 to 50,000 PE															
Ennis North	P	17,000	17,000	Secondary treatment only	Freshwater (R)	No	20	0	0	20	0	0	20	0	0

Agglomerations without secondary treatment in 2009

Agglomeration	Agglomeration PE	Discharge To	Sensitive	Present Treatment
Ballyvaughan	1500	Coastal Water	No	No Treatment
Clarecastle	1000	Estuarine	No	No Treatment
Corofin	500	Freshwater River	No	Primary Treatment only
Kilkee	1330	Coastal	No	No Treatment
Kilrush	2600	Coastal	No	No Treatment
Liscannor	800	Coastal	No	No Treatment
Scarriff	1300	Freshwater River	Yes	Primary Treatment only

CORK CITY COUNCIL

Effluent Quality from Secondary Waste Water Treatment Plants in 2009

Plant Name	Pass/ Fail 2009	Agglom. PE	Plant PE	Present Treatment	Discharge To	Sensitive Yes/No	BOD No. of Samples	BOD No. of samples >25mg/l	BOD No. of samples >50mg/l	COD No. of Samples	COD No. of samples >125mg/l	COD No. of samples >250mg/l	TSS No. of Samples	TSS No. of samples >35mg/l	TSS No. of samples >87.5 mg/l
> 150,001 PE															
Cork city	P	256,000	413,000	Secondary treatment only	Estuarine	Yes	258	1	0	261	1	0	261	1	0

CORK COUNTY COUNCIL

Effluent Quality from Secondary Waste Water Treatment Plants in 2009

Plant Name	Pass/ Fail 2009	Agglom. PE	Plant PE	Present Treatment	Discharge To	Sensitive Yes/No	BOD No. of Samples	BOD No. of samples >25mg/l	BOD No. of samples >50mg/l	COD No. of Samples	COD No. of samples >125mg/l	COD No. of samples >250mg/l	TSS No. of Samples	TSS No. of samples >35mg/l	TSS No. of samples >87.5 mg/l
From 500 to 999 PE															
Ballineen/ Enniskeane	FQ	840	660	Secondary treatment only	Freshwater(R)	No	6	3	1	6	1	0	6	2	1
Ballyclough	P	600	800	Secondary treatment only	Freshwater (R)	No	7	0	0	7	0	0	7	1	0
Ballyhooley	FQ	545	750	Secondary treatment only	Freshwater (R)	Yes	6	0	0	6	0	0	6	2	0
Banteer	P	700	700	Secondary treatment only	Freshwater (R)	No	7	0	0	7	0	0	7	0	0
Boherbue	FQ	800	600	Secondary treatment only	Freshwater (R)	No	7	2	1	7	0	0	7	1	0
Bweeng	NR	550	250	Secondary treatment only	Freshwater (R)	No	0	0	0	0	0	0	0	0	0
Carrignavar	NR	500	500	Secondary treatment only	Freshwater (R)	No	0	0	0	0	0	0	0	0	0
Churchtown	P	600	936	Secondary treatment only	Freshwater (R)	No	7	0	0	7	0	0	7	0	0
Clondulane	FQ	700	700	Secondary treatment only	Freshwater (R)	Yes	6	1	0	7	1	0	6	2	1
Conna	FQ	510	510	Secondary treatment only	Freshwater (R)	No	6	3	2	7	2	0	7	1	0
Drimoleague	FQ	635	500	Secondary treatment only	Freshwater(R)	No	6	6	3	6	3	0	6	5	0
Dripsey	FQ	390	600	Secondary treatment only	Freshwater (R)	No	7	4	1	7	1	0	7	1	1
Glanworth	FQ	607	800	Secondary treatment only	Freshwater (R)	No	6	3	0	6	2	0	6	2	0
Glenville	NR	500	500	Secondary treatment only	Freshwater (R)	No	0	0	0	0	0	0	0	0	0
Kilbrittan	FQ	598	800	Secondary treatment only	Freshwater (R)	No	6	0	0	6	0	0	6	2	0
Kildorrery	FQ	500	850	Secondary treatment only	Freshwater (R)	No	6	1	1	6	1	0	6	1	1
Kileens	FQ	860	600	Secondary treatment only	Freshwater (R)	No	6	1	0	6	1	0	6	2	0
Ladysbridge	P	950	950	Secondary treatment only	Freshwater (R)	No	6	0	0	6	0	0	6	0	0
Riverstick	FQ	550	550	Secondary treatment with NR	Freshwater (R)	No	7	7	7	7	4	0	7	0	0
From 1,000 to 1,999 PE															
Castlelyons	FQ	1,200	1,200	Secondary treatment only	Freshwater (R)	No	6	0	0	6	0	0	6	2	0
Castletownroche	FQ	950	1,000	Secondary treatment only	Freshwater (R)	No	6	3	2	6	2	0	6	2	1
Cloughduv	FQ	400	1,500	Secondary treatment only	Freshwater (R)	No	6	2	1	6	1	1	6	2	1
Cloyne	P	1,800	1,400	Secondary treatment only	Freshwater (R)	No	6	0	0	6	0	0	6	0	0
Doneraile	FQ	941	1,675	Secondary treatment only	Freshwater (R)	No	6	2	0	6	0	0	6	2	0

CORK COUNTY COUNCIL (continued)

Plant Name	Pass/ Fail 2009	Agglom. PE	Plant PE	Present Treatment	Discharge To	Sensitive Yes/No	BOD No. of Samples	BOD No. of samples >25mg/l	BOD No. of samples >50mg/l	COD No. of Samples	COD No. of samples >125mg/l	COD No. of samples >250mg/l	TSS No. of Samples	TSS No. of samples >35mg/l	TSS No. of samples >87.5 mg/l
From 1,000 to 1,999 PE															
Dromahane	FQ	1,150	1,000	Secondary treatment only	Freshwater (R)	No	7	1	1	7	1	0	7	2	1
Dunmanway	FQ	2,404	1,000	Secondary treatment only	Freshwater(R)	No	13	9	6	13	8	2	13	8	3
Killavullen	FQ	700	1,000	Secondary treatment only	Freshwater (R)	No	6	3	2	6	2	1	6	5	2
Killeagh	P	1,800	1,000	Secondary treatment only	Freshwater (R)	No	6	0	0	6	0	0	6	0	0
Millstreet	P	2,252	1,600	Secondary treatment only	Freshwater (R)	No	15	2	0	15	0	0	15	1	0
Mogeely	FQ	616	1,200	Secondary treatment with NR	Freshwater (R)	No	7	0	0	7	0	0	7	2	0
Newmarket	P	1,000	1,500	Secondary treatment only	Freshwater (R)	No	9	0	0	9	0	0	9	1	0
From 2,000 to 10,000 PE															
Buttevant	P	1,700	3,150	Secondary treatment only	Freshwater (R)	No	12	0	0	12	0	0	12	0	0
Carrigtohill	FQ	12,000	8,500	Secondary treatment only	Estuarine	Yes	13	2	1	13	4	1	13	5	1
Castlemartyr	FQ	1938	2,000	Secondary treatment only	Freshwater (R)	No	12	2	1	12	0	0	12	2	0
Charleville	P	3,696	7,500	Secondary treatment only	Freshwater (R)	No	7	1	0	7	0	0	7	0	0
Kanturk	FN	2,354	3,500	Secondary treatment only	Freshwater (R)	No	7	1	0	7	0	0	7	0	0
Kilworth	FQN	1,200	2,500	Secondary treatment only	Freshwater (R)	No	7	2	2	7	2	2	7	2	1
Macroom	FQ	6,616	5,230	Secondary treatment only	Freshwater (R)	No	12	1	0	12	0	0	12	3	0
Midleton	P	12,000	10,000	Secondary treatment with NR	Coastal Water	Yes	12	0	0	12	0	0	12	0	0
Mitchelstown	FQ	4,100	7,000	Secondary treatment with NR	Freshwater (R)	No	13	3	0	13	0	0	13	5	0
North Cobh	FQ	850	4,000	Secondary treatment only	Coastal Water	Yes	12	6	3	12	5	1	12	6	3
Rathcormac	FQ	2,200	4,000	Secondary treatment only	Freshwater (R)	No	12	1	1	12	1	1	12	1	1
Watergrasshill	P	1,600	3,000	Secondary treatment with NR	Freshwater (R)	No	15	1	0	15	0	0	15	0	0
From 10,001 to 15,000 PE															
Blarney	P	13,000	13,000	Secondary treatment with NR	Freshwater (R)	No	12	0	0	12	0	0	12	0	0
Clonakilty	FQ	15,000	15,000	Secondary treatment only	Estuarine	No	12	5	2	12	2	1	12	3	2
From 15,001 to 50,000 PE															
Ballincollig New	P	24,542	24,600	Secondary treatment only	Freshwater (R)	No	14	0	0	14	0	0	14	0	0
Bandon	FN	8,178	20,000	Secondary treatment only	Freshwater (R)	No	6	1	0	6	0	0	6	1	0
Fermoy	P	14,000	20,000	Secondary treatment with NR	Freshwater (R)	Yes	14	0	0	14	0	0	14	0	0
Mallow	P	14,000	18,000	Secondary treatment with NR	Freshwater (R)	Yes	14	1	0	14	0	0	14	1	0

CORK COUNTY COUNCIL (continued)

Agglomerations without secondary treatment in 2009

Agglomeration	Agglomeration PE	Discharge To	Sensitive	Present Treatment
Ballingeary	650	Freshwater River	No	Primary treatment only
Ballycotton	971	Coastal Water	No	Primary treatment only
Ballydehob	560	Coastal Water	No	Primary treatment only
Ballymakeera	1,600	Freshwater River	No	Primary treatment only
Baltimore	1,684	Estuarine	No	Primary treatment only
Bantry	5,647	Coastal Water	No	No treatment
Castletownbere	1,300	Coastal Water	No	No treatment
Castletownshend	450	Coastal Water	No	No treatment
Coachford	726	Freshwater Lake	No	Primary treatment only
Cobh	12,000	Coastal Water	No	No treatment
Courtmacsherry	1,380	Estuarine	No	Primary treatment only
Glengariff	750	Coastal Water	No	Primary treatment only
Innishannon	887	Freshwater River	Yes	Primary treatment only
Kinsale	7,415	Estuarine	Yes	Secondary treatment plant commissioned in 2011
Passage/Monkstown	7,600	Estuarine	Yes	No treatment
Ringaskiddy Village	797	Coastal Water	No	Preliminary treatment only
Ringaskiddy/Crosshaven/ Carrigaline	97,556	Coastal Water	No	Preliminary treatment only
Rosscarbery / Owenahicha	4,051	Coastal Water	No	Primary treatment only
Schull	1,680	Coastal Water	No	Primary treatment only
Skibbereen	3,000	Estuarine	No	Primary treatment only
Timoleague	592	Estuarine	No	No treatment
Unionhall	634	Estuarine	No	Primary treatment only
Whitegate/Agahada	1953	Coastal Water	No	No treatment
Youghal	9,600	Estuarine	Yes	Preliminary treatment only

DONEGAL COUNTY COUNCIL

Effluent Quality from Secondary Waste Water Treatment Plants in 2009

Plant Name	Pass/ Fail 2009	Agglom. PE	Plant PE	Present Treatment	Discharge To	Sensitive Yes/No	BOD No. of Samples	BOD No. of samples >25mg/l	BOD No. of samples >50mg/l	COD No. of Samples	COD No. of samples >125mg/l	COD No. of samples >250mg/l	TSS No. of Samples	TSS No. of samples >35mg/l	TSS No. of samples >87.5 mg/l
From 500 to 999 PE															
Killea	FQ	800	800	Secondary treatment only	Freshwater(R)	No	6	5	4	6	4	2	6	5	3
Kilmacrennan	FQ	900	500	Secondary treatment only	Freshwater(R)	No	6	3	2	6	3	1	6	4	1
Milford	FQ	1,890	920	Secondary treatment only	Freshwater(R)	No	6	2	1	6	2	0	6	2	2
Mountcharles	NR	651	380	Secondary treatment only	Freshwater (R)	No	0	0	0	0	0	0	0	0	0
Raphoe	FQ	1,475	800	Secondary treatment only	Freshwater(R)	No	6	2	0	6	1	0	6	4	1
From 1,000 to 1,999 PE															
Ballyliffen	FQ	1,000	1,000	Secondary treatment only	Freshwater(R)	No	6	3	3	6	3	2	6	4	2
Killygordon	FQ	700	1,700	Secondary treatment only	Freshwater(R)	No	6	1	0	6	1	0	6	2	0
Manorcunningham	P	850	1,000	Secondary treatment only	Estuarine	No	6	0	0	6	0	0	6	0	0
Newtowncunningham	FQ	1,600	1,000	Secondary treatment only	Freshwater(R)	No	6	1	0	6	2	0	6	2	0
Rossnowlagh	P	1,000	1,000	Secondary treatment only	Estuarine	No	6	0	0	6	0	0	6	0	0
From 2,000 to 10,000 PE															
Ardara	FQ	950	2,350	Secondary treatment only	Estuarine	No	12	0	0	12	0	0	12	2	2
Ballybofey/Stranorlar	FQ	6,200	4,000	Secondary treatment only	Freshwater(R)	No	12	3	2	12	2	1	12	2	2
Ballyshannon	P	4,316	6,100	Secondary treatment only	Estuarine	No	12	0	0	12	0	0	12	0	0
Carndonagh	FQ	3,996	5,200	Secondary treatment only	Freshwater(R)	No	12	2	1	12	1	0	12	0	0
From 10,001 to 15,000 PE															
Donegal Town	P	6,500	12,000	Secondary treatment only	Estuarine	No	12	0	0	12	0	0	12	0	0
From 15,001 to 50,000 PE															
Letterkenny	FQ	22,500	20,000	Secondary treatment only	Estuarine	No	12	8	6	12	9	6	12	12	8

DONEGAL COUNTY COUNCIL (continued)

Agglomerations without secondary treatment in 2009

Agglomeration	Agglomeration P.E.	Discharge To	Sensitive	Present Treatment
Buncrana	5,231	Coastal Water	No	Primary treatment only
Bundoran	8,046	Coastal Water	No	Preliminary treatment only
Carrigart	500	Estuarine	No	Primary treatment only
Castlefinn	900	Freshwater River	No	Primary treatment only
Convoy	1,199	Freshwater River	No	Primary treatment only
Downings	1,910	Coastal Water	No	Primary treatment only
Dunfanaghy / Portnablagh	1,700	Coastal Water	No	Primary treatment only
Dungloe	1,600	Freshwater River	No	Primary treatment only
Dunkineeley	720	Coastal Water	No	Primary treatment only
Falcarragh	1,588	Estuarine	No	Primary treatment only
Glenties	1,200	Freshwater River	No	Primary treatment only
Kilcar	900	Coastal Water	No	Preliminary treatment only
Killybegs	92,000	Estuarine	Yes	No treatment
Lifford	1,969	Freshwater River	No	Primary treatment only
Moville	2,000	Freshwater River	No	No treatment
Ramelton	1,600	Estuarine	No	Primary treatment only
Rathmullan No. 1 and No. 2	1,156	Coastal Water	No	Primary treatment only

DUBLIN CITY COUNCIL

Effluent Quality from Secondary Waste Water Treatment Plants in 2009

Plant Name	Pass/ Fail 2009	Agglom. PE	Plant PE	Present Treatment	Discharge To	Sensitive Yes/No	BOD No. of Samples	BOD No. of samples >25mg/l	BOD No. of samples >50mg/l	COD No. of Samples	COD No. of samples >125mg/l	COD No. of samples >250mg/l	TSS No. of Samples	TSS No. of samples >35mg/l	TSS No. of samples >87.5 mg/l
> 150,001 PE															
Greater Dublin (Ringsend)	FQ	4,418,113 ¹ (1,738,477)	1,640,000	Secondary treatment only	Estuarine	Yes	142	20	7	241	19	7	241	57	15

DUN-LAOGHAIRE RATHDOWN

Agglomerations without secondary treatment in 2009

Agglomeration	Agglomeration P.E.	Discharge To	Sensitive	Present Treatment
Shanganagh	65,700	Coastal Water	No	Secondary treatment plant commissioned in 2011

¹ This was the maximum weekly p.e loading to Ringsend in 2009. The average weekly p.e in 2009 was 1,738,477. Maximum weekly p.e loading was 3,837,891 in 2008 and 2,454,924 in 2010.

FINGAL COUNTY COUNCIL

Effluent Quality from Secondary Waste Water Treatment Plants in 2009

Plant Name	Pass/ Fail 2009	Agglom. PE	Plant PE	Present Treatment	Discharge To	Sensitive Yes/No	BOD No. of Samples	BOD No. of samples >25mg/l	BOD No. of samples >50mg/l	COD No. of Samples	COD No. of samples >125mg/l	COD No. of samples >250mg/l	TSS No. of Samples	TSS No. of samples >35mg/l	TSS No. of samples >87.5 mg/l
From 500 to 999 PE															
Toberburr (in Swords agglom)	FQN	640	640	Secondary treatment only	Freshwater (R)	Yes	5	5	4	5	5	1	5	5	1
From 2,000 to 10,000 PE															
Portrane	FN	8,000	8,000	Secondary treatment only	Coastal Water	No	5	0	0	6	0	0	6	0	0
From 15,001 to 50,000 PE															
Malahide	FQ	13,500	21,000	Secondary treatment only	Estuarine	No	36	3	0	38	1	0	38	15	3
From 50,001 to 150,000 PE															
Balbriggan/Skerries (Barnageerragh)	P	31,800	70,000	Secondary treatment only	Coastal Water	No	48	0	0	53	0	0	53	0	0
Swords	FQ	62,750	60,000	Secondary treatment with NR	Estuarine	Yes	36	4	1	38	2	1	38	8	1

Agglomerations without secondary treatment in 2009

Agglomeration	Agglomeration P.E.	Discharge To	Sensitive	Present Treatment
Howth/Baldoyle/Portmarnack	9,000	Coastal Water	No	From 2011 waste water is pumped to Ringsend WWTP ²
Loughshinney (in Skerries agglomeration)	700	Coastal Water	No	Primary treatment only
Lusk	7,000	Estuarine	Yes	Primary treatment only
Rush	7,800	Coastal Water	No	No treatment

² With the exception of 112 p.e. that is still discharging to Doldrum Bay. This discharge was identified in WWDL D0034-01 (Ringsend) as a discharge (S4) to cease by 31/12/2011.

GALWAY CITY COUNCIL

Effluent Quality from Secondary Waste Water Treatment Plants in 2009

Plant Name	Pass/ Fail 2009	Agglom. PE	Plant PE	Present Treatment	Discharge To	Sensitive Yes/No	BOD No. of Samples	BOD No. of samples >25mg/l	BOD No. of samples >50mg/l	COD No. of Samples	COD No. of samples >125mg/l	COD No. of samples >250mg/l	TSS No. of Samples	TSS No. of samples >35mg/l	TSS No. of samples >87.5 mg/l
From 50,001 to 150,000 PE															
Galway City (Mutton Island)	P	91,600	91,600	Secondary treatment only	Coastal Water	No	24	0	0	24	0	0	24	0	0

GALWAY COUNTY COUNCIL

Effluent Quality from Secondary Waste Water Treatment Plants in 2009

Plant Name	Pass/ Fail 2009	Agglom. PE	Plant PE	Present Treatment	Discharge To	Sensitive Yes/No	BOD No. of Samples	BOD No. of samples >25mg/l	BOD No. of samples >50mg/l	COD No. of Samples	COD No. of samples >125mg/l	COD No. of samples >250mg/l	TSS No. of Samples	TSS No. of samples >35mg/l	TSS No. of samples >87.5 mg/l
500 to 999 PE															
Ballygar	FQ	944	500	Secondary treatment only	Freshwater (R)	No	6	6	4	6	4	0	6	5	0
Clonbur	FQ	700	700	Secondary treatment only	Freshwater (R)	No	6	5	2	6	4	2	6	3	1
Letterfrack	NR	500	800	Secondary treatment only	Freshwater (R)	No	0	0	0	0	0	0	0	0	0
Mountbellew	FQ	1,033	700	Secondary treatment only	Freshwater (R)	No	7	7	3	6	2	1	7	5	3
Moylough	P	328	600	Secondary treatment only	Freshwater (R)	No	9	0	0	10	0	0	10	0	0
Oughterard	FQ	1,731	500	Secondary treatment only	Freshwater (R)	No	12	9	0	13	2	0	13	7	0
From 2,000 to 10,000 PE															
Athenry	FQ	6,000	6,000	Secondary treatment with NR	Freshwater (R)	No	12	9	4	12	3	0	12	6	1
Ballinasloe	P	5,667	9,000	Secondary treatment with NR	Freshwater (R)	No	12	0	0	12	0	0	12	0	0
Gort	FQ	4,836	4,310	Secondary treatment only	Freshwater (R)	No	14	6	1	14	3	0	14	1	0
Headford	P	1,390	2,100	Secondary treatment with NR	Freshwater (R)	No	12	0	0	12	0	0	12	0	0
Loughrea	FQ	9,500	9,500	Secondary treatment with NR	Freshwater (R)	No	12	4	0	12	1	0	12	3	0
Moycullen	FQ	2,500	4,000	Secondary treatment with NR	Freshwater (R)	No	13	3	0	13	0	0	13	1	0
Portumna	FQ	2,842	3,100	Secondary treatment with NR	Freshwater (L)	Yes	12	1	1	12	0	0	12	1	0
From 15,001 to 50,000 PE															
Tuam	P	13,250	23,250	Secondary treatment with NR	Freshwater(R)	No	13	0	0	13	0	0	13	0	0

Agglomerations without secondary treatment in 2009

Agglomeration	Agglomeration P.E.	Discharge To	Sensitive	Present Treatment
Ahascragh	560	Freshwater River	No	Preliminary treatment only
Carraroe	850	Coastal Water	No	No treatment
Clifden	4,063	Estuarine	No	Primary treatment only
Dunmore	890	Freshwater River	No	Primary treatment only
Eyrecourt	702	Freshwater River	No	Primary treatment only
Glenamaddy	738	Freshwater Lake	No	Primary treatment only
Kinvara	1,270	Estuarine	No	No treatment
Spiddal	850	Coastal Water	No	No treatment

KERRY COUNTY COUNCIL

Effluent Quality from Secondary Waste Water Treatment Plants in 2009

Plant Name	Pass/ Fail 2009	Agglom. PE	Plant PE	Present Treatment	Discharge To	Sensitive Yes/No	BOD No. of Samples	BOD No. of samples >25mg/l	BOD No. of samples >50mg/l	COD No. of Samples	COD No. of samples >125mg/l	COD No. of samples >250mg/l	TSS No. of Samples	TSS No. of samples >35mg/l	TSS No. of samples >87.5 mg/l
From 500 to 999 PE															
Fieries	NR	712	150	Secondary treatment only	Freshwater (R)	No	0	0	0	0	0	0	0	0	0
Rathmore	FQ	500	500	Secondary treatment only	Freshwater (R)	No	7	2	0	7	1	0	7	2	0
From 2,000 to 10,000 PE															
Ballybunion	P	8,164	8,180	Secondary treatment only	Estuarine	Yes	30	0	0	30	0	0	31	0	0
Ballyheigue	P	5,214	4,234	Secondary treatment only	Coastal Water	No	35	0	0	35	0	0	35	0	0
Cahersiveen	P	4,845	5,100	Secondary treatment only	Estuarine	No	77	0	0	77	0	0	77	0	0
Castleisland	P	5,802	6,000	Secondary treatment only	Freshwater (R)	No	42	0	0	42	0	0	42	0	0
Kenmare	P	9,138	3,500	Secondary treatment only	Estuarine	No	51	0	0	51	0	0	51	0	0
Killorglin	P	7,696	5,000	Secondary treatment only	Freshwater (R)	No	46	0	0	47	0	0	47	0	0
From 10,001 to 15,000 PE															
An Daingean	P	12,000	11,000	Secondary treatment only	Coastal Water	No	38	0	0	38	0	0	37	0	0
Listowel	P	16,182	12,500	Secondary treatment only	Freshwater (R)	No	27	0	0	28	0	0	28	0	0
From 50,001 to 150,000 PE															
Killarney	P	26,367	54,000	Secondary treatment with NR	Freshwater (L)	Yes	50	0	0	50	0	0	50	0	0
Tralee	P	17,358	50,333	Secondary treatment only	Estuarine	Yes	40	0	0	40	0	0	40	0	0

Agglomerations without secondary treatment in 2009

Agglomeration	Agglomeration P.E.	Discharge To	Sensitive	Present Treatment
Abbeydorney	564	Freshwater River	No	Primary treatment only
Ardfert	1,500	Freshwater River	No	Primary treatment only
Ballyduff	800	Freshwater River	Yes	Primary treatment only
Ballylongford	900	Estuarine	No	Primary treatment only
Castlegregory	639	Estuarine	No	Primary treatment only
Fenit	1,300	Coastal Water	No	Primary treatment only

KERRY COUNTY COUNCIL (continued)

Agglomerations without secondary treatment in 2009

Agglomeration	Agglomeration P.E.	Discharge To	Sensitive	Present Treatment
Glenbeigh	1,900	Freshwater River	No	Primary treatment only
Knightstown	772	Coastal Water	No	Primary treatment only
Lixnaw	1064	Freshwater River	No	Primary treatment only
Milltown	1474	Freshwater River	No	Primary treatment only
Sneem	900	Estuarine	No	Primary treatment only
Tarbert	1,400	Estuarine	No	Primary treatment only
Waterville	2,000	Coastal Water	No	Primary treatment only

KILDARE COUNTY COUNCIL

Effluent Quality from Secondary Waste Water Treatment Plants in 2009

Plant Name	Pass/ Fail 2009	Agglom. PE	Plant PE	Present Treatment	Discharge To	Sensitive Yes/No	BOD No. of Samples	BOD No. of samples >25mg/l	BOD No. of samples >50mg/l	COD No. of Samples	COD No. of samples >125mg/l	COD No. of samples >250mg/l	TSS No. of Samples	TSS No. of samples >35mg/l	TSS No. of samples >87.5 mg/l
From 500 to 999 PE															
Derrinturn	P	1,140	500	Secondary treatment only	Freshwater (R)	Yes	7	0	0	7	0	0	7	0	0
Kilmeague	P	1,200	700	Secondary treatment oly	Freshwater (R)	Yes	6	1	0	6	0	0	6	0	0
From 1,000 to 1,999 PE															
Allenwood	P	618	1,500	Secondary treatment with NR	Freshwater (R)	Yes	6	0	0	6	0	0	6	0	0
Robertstown	P	1,043	1,000	Secondary treatment with NR	Freshwater (R)	Yes	8	0	0	8	0	0	8	0	0
From 2,000 to 10,000 PE															
Castledermot	P	1,100	2,400	Secondary treatment with NR	Freshwater (R)	Yes	13	0	0	13	0	0	13	0	0
Coill Dubh	P	1,166	2,000	Secondary treatment with NR	Freshwater (R)	Yes	8	0	0	8	0	0	8	0	0
Kildare Town	FQ	7,000	7,000	Secondary treatment with NR	Freshwater (R)	Yes	15	0	0	15	2	0	15	4	1
Monasterevin	P	2,000	9,000	Secondary treatment with NR	Freshwater (R)	Yes	13	0	0	13	0	0	13	0	0
Rathangan	P	1,500	2,000	Secondary treatment only	Freshwater (R)	Yes	13	0	0	13	0	0	13	0	0
From 10,001 to 15,000 PE															
Athy	P	13,000	15,000	Secondary treatment with NR	Freshwater (R)	Yes	47	0	0	313	0	0	18	0	0
From 50,001 to 150,000 PE															
Leixlip	P	68,515	80,000	Secondary treatment with NR	Freshwater (R)	Yes	46	0	0	57	0	0	59	1	0
Osberstown	P	81,933	80,000	Secondary treatment with NR	Freshwater (R)	Yes	40	0	0	40	0	0	40	0	0

Agglomerations without secondary treatment in 2009

Agglomeration	Agglomeration P.E.	Discharge To	Sensitive	Present Treatment
Ballymore Eustace	1400	Freshwater River	Yes	Primary treatment only

KILKENNY COUNTY COUNCIL

Effluent Quality from Secondary Waste Water Treatment Plants in 2009

Plant Name	Pass/ Fail 2009	Agglom. PE	Plant PE	Present Treatment	Discharge To	Sensitive Yes/No	BOD No. of Samples	BOD No. of samples >25mg/l	BOD No. of samples >50mg/l	COD No. of Samples	COD No. of samples >125mg/l	COD No. of samples >250mg/l	TSS No. of Samples	TSS No. of samples >35mg/l	TSS No. of samples >87.5 mg/l
From 500 to 999 PE															
Ballyhale-Knocktopher	NR	400	400	Secondary treatment only	Freshwater (R)	Yes	0	0	0	0	0	0	0	0	0
Stonyford	FQ	1,210	500	Secondary treatment only	Freshwater (R)	Yes	6	4	1	6	0	0	6	1	0
From 1,000 to 1,999 PE															
Ballyragget	FQ	3,625	1,920	Secondary treatment only	Freshwater (R)	Yes	12	12	11	12	12	9	12	12	12
Clogh/Moneenroe	FQ	3,129	1,740	Secondary treatment only	Freshwater (R)	Yes	12	4	2	12	2	0	12	4	2
Gowran	P	530	1,600	Secondary treatment only	Freshwater (R)	Yes	7	0	0	7	0	0	7	0	0
Paulstown	FQ	1,964	1,000	Secondary treatment only	Freshwater (R)	Yes	8	2	1	8	2	0	8	2	0
Piltown	FQ	3,315	1,500	Secondary treatment only	Estuarine	Yes	12	4	0	12	0	0	12	0	0
Urlingford	FQ	2,687	1,500	Secondary treatment only	Freshwater (R)	Yes	12	12	10	12	7	0	12	7	0
From 2,000 to 10,000 PE															
Callan	FQ	3,570	4,000	Secondary treatment only	Freshwater (R)	Yes	12	3	1	12	1	0	12	5	2
Castlecomer	FQ	3,200	2,540	Secondary treatment only	Freshwater (R)	Yes	12	10	8	12	5	0	12	6	1
Graignamanagh	P	2,629	3,000	Secondary treatment only	Freshwater (R)	Yes	12	0	0	12	0	0	12	1	0
Mooncoin	FQ	1,001	2,800	Secondary treatment only	Estuarine	Yes	12	0	0	12	0	0	12	3	0
Thomastown	P	4,710	3,000	Secondary treatment only	Freshwater (R)	Yes	12	1	0	12	0	0	12	2	0
From 50,001 to 150,000 PE															
Kilkenny City	FQ	97,660	107,650	Secondary treatment only	Freshwater (R)	Yes	32	0	0	342	1	0	342	2	1

Agglomerations without secondary treatment in 2009

Agglomeration	Agglomeration P.E.	Discharge To	Sensitive	Present Treatment
Bennettsbridge	1,425	Freshwater River	Yes	Primary treatment only
Fiddown	608	Estuarine	No	Primary treatment only
Freshford	400	Freshwater River	Yes	Preliminary treatment only
Goresbridge	400	Freshwater River	Yes	Primary treatment only
Johnstown	990	Freshwater River	No	Primary treatment only
Kilmacow	1000	N/A	No	On site systems only in 2009, new plant constructed in 2010
Mullinavat	300	Freshwater River	No	Primary treatment only

LAOIS COUNTY COUNCIL

Effluent Quality from Secondary Waste Water Treatment Plants in 2009

Plant Name	Pass/ Fail 2009	Agglom. PE	Plant PE	Present Treatment	Discharge To	Sensitive Yes/No	BOD No. of Samples	BOD No. of samples >25mg/l	BOD No. of samples >50mg/l	COD No. of Samples	COD No. of samples >125mg/l	COD No. of samples >250mg/l	TSS No. of Samples	TSS No. of samples >35mg/l	TSS No. of samples >87.5 mg/l
From 500 to 999 PE															
Ballinakill	FQ	430	700	Secondary treatment only	Freshwater (R)	No	6	0	0	6	0	0	6	2	0
Ballyroan	FQ	726	600	Secondary treatment only	Freshwater (R)	No	6	5	1	6	2	0	6	6	4
Castletown	FQ	515	500	Secondary treatment only	Freshwater (R)	No	6	1	1	6	0	0	6	3	1
Clonaslee	FQ	578	500	Secondary treatment only	Freshwater (R)	No	6	2	0	6	1	0	6	4	1
Durrow	FQ	1,215	700	Secondary treatment only	Freshwater (R)	No	6	5	5	6	4	1	6	6	3
From 1,000 to 1,999 PE															
Borris-in-Ossory	P	900	1,300	Secondary treatment only	Freshwater (R)	No	6	0	0	6	0	0	6	1	0
Rathdowney	FQ	2,022	1,500	Secondary treatment only	Freshwater (R)	No	12	1	0	12	1	0	12	3	0
From 2,000 to 10,000 PE															
Abbeyleix	FQ	2,209	2,300	Secondary treatment only	Freshwater (R)	No	24	7	2	24	7	3	24	16	4
Ballylinan	FQ	1,681	2,000	Secondary treatment only	Freshwater (R)	No	12	1	0	12	1	1	12	6	2
Mountmellick	P	6,300	7,000	Secondary treatment only	Freshwater (R)	No	12	0	0	12	0	0	12	1	0
Mountrath	FQ	2,069	2,300	Secondary treatment only	Freshwater (R)	No	24	11	8	24	9	2	24	12	5
Stradbally	P	1,600	2,000	Secondary treatment only	Freshwater (R)	No	12	0	0	12	0	0	12	1	0
From 10,001 to 15,000 PE															
Portarlinton	FQ	7,000	13,000	Secondary treatment only	Freshwater (R)	Yes	12	0	0	12	0	0	12	5	0
From 15,001 to 50,000 PE															
Portlaoise	P	21,000	39,000	Secondary treatment with NR	Freshwater (R)	Yes	12	0	0	12	0	0	12	1	0

LEITRIM COUNTY COUNCIL

Effluent Quality from Secondary Waste Water Treatment Plants in 2009

Plant Name	Pass/ Fail 2009	Agglom. PE	Plant PE	Present Treatment	Discharge To	Sensitive Yes/No	BOD No. of Samples	BOD No. of samples >25mg/l	BOD No. of samples >50mg/l	COD No. of Samples	COD No. of samples >125mg/l	COD No. of samples >250mg/l	TSS No. of Samples	TSS No. of samples >35mg/l	TSS No. of samples >87.5 mg/l
From 1,000 to 1,999 PE															
Leitrim Village	P	1,069	1,500	Secondary treatment only	Freshwater (R)	Yes	6	0	0	6	0	0	6	0	0
From 2,000 to 10,000 PE															
Ballinamore	P	1,418	2,200	Secondary treatment with NR	Freshwater (R)	No	6	0	0	6	0	0	6	0	0
Carrick-on-Shannon	FQ	6,100	3,000	Secondary treatment only	Freshwater (R)	Yes	12	4	1	12	6	2	12	6	4
Dromahair	FQN	1,100	990	Secondary treatment with NR	Freshwater (R)	No	6	1	1	6	1	1	6	3	1
Drumshanbo	FN	1,874	4,000	Secondary treatment with NR	Freshwater (R)	Yes	6	0	0	6	0	0	6	0	0
Kinlough	FN	1,052	600	Secondary treatment with NR	Freshwater (R)	No	6	0	0	6	0	0	6	1	0
Manorhamilton	FN	2,372	3,500	Secondary treatment with NR	Freshwater (R)	No	5	0	0	5	0	0	5	0	0
Mohill	FN	1,691	1,900	Secondary treatment with NR	Freshwater (R)	Yes	6	0	0	6	0	0	6	0	0

LIMERICK CITY COUNCIL

Effluent Quality from Secondary Waste Water Treatment Plants in 2009

Plant Name	Pass/ Fail 2009	Agglom. PE	Plant PE	Present Treatment	Discharge To	Sensitive Yes/No	BOD No. of Samples	BOD No. of samples >25mg/l	BOD No. of samples >50mg/l	COD No. of Samples	COD No. of samples >125mg/l	COD No. of samples >250mg/l	TSS No. of Samples	TSS No. of samples >35mg/l	TSS No. of samples >87.5 mg/l
From 50,001 to 150,000 PE															
Limerick City	P	110,000	130,000	Secondary treatment only	Estuarine	No	24	1	0	24	0	0	24	2	0

LIMERICK COUNTY COUNCIL

Effluent Quality from Secondary Waste Water Treatment Plants in 2009

Plant Name	Pass/ Fail 2009	Agglom. PE	Plant PE	Present Treatment	Discharge To	Sensitive Yes/No	BOD No. of Samples	BOD No. of samples >25mg/l	BOD No. of samples >50mg/l	COD No. of Samples	COD No. of samples >125mg/l	COD No. of samples >250mg/l	TSS No. of Samples	TSS No. of samples >35mg/l	TSS No. of samples >87.5 mg/l
<500 pe															
Bruff	FQ	1,480	400	Secondary treatment only	Freshwater (R)	No	8	3	0	8	2	0	8	3	1
Dromcollagher	FQ	1,280	400	Secondary treatment only	Freshwater (R)	No	10	6	6	10	6	2	10	6	1
Oola	P	620	350	Secondary treatment only	Freshwater (R)	No	8	1	0	9	0	0	9	0	0
From 500 to 999 PE															
Ballingarry	FQ	870	500	Secondary treatment only	Freshwater (R)	No	7	3	1	7	1	0	7	1	0
Doon	FQ	790	700	Secondary treatment only	Freshwater (R)	No	13	1	0	10	1	0	13	1	1
Hospital	FQ	1,290	500	Secondary treatment only	Freshwater (R)	No	9	8	4	9	5	1	9	5	0
Murroe	FQ	1,150	800	Secondary treatment only	Freshwater (R)	No	9	2	1	10	1	0	10	1	0
Pallasgreen	P	550	750	Secondary treatment with NR	Freshwater (R)	No	7	0	0	9	0	0	9	0	0
From 1,000 to 1,999 PE															
Bruree	FQ	780	1,200	Secondary treatment with NR	Freshwater (R)	No	8	4	3	8	4	2	8	5	3
Cappamore	FQ	1,075	1,500	Secondary treatment with NR	Freshwater (R)	No	7	1	1	8	1	1	7	2	1
Kilfinnane	FQ	950	1,500	Secondary treatment with NR	Freshwater (R)	No	7	2	1	7	1	0	7	1	1
From 2,000 to 10,000 PE															
Abbeyfeale	P	4,600	2,860	Secondary treatment only	Freshwater (R)	Yes	13	0	0	13	0	0	13	0	0
Adare	FQ	1,600	2,500	Secondary treatment with NR	Estuarine	No	19	4	3	19	4	2	19	5	2
Cahercomlish	FQN	1,500	2,500	Secondary treatment with NR	Freshwater (R)	No	9	0	0	10	0	0	10	1	1
Croom	FN	1,850	2,000	Secondary treatment only	Freshwater (R)	No	9	0	0	11	0	0	11	0	0
Kilmallock	FQ	1,700	2,200	Secondary treatment with NR	Freshwater (R)	No	13	2	0	14	3	0	14	5	1
Newcastle West	P	7,400	9,000	Secondary treatment with NR	Freshwater (R)	No	13	2	0	14	0	0	14	1	0
Pallaskenry	FN	1,170	2,000	Secondary treatment with NR	Estuarine	No	7	0	0	8	1	0	8	1	0
Rathkeale	P	1,600	4,000	Secondary treatment with NR	Freshwater (R)	No	13	0	0	15	0	0	15	0	0
From 15,001 to 50,000 PE															
Castletroy	P	30,000	19,500	Secondary treatment with NR	Freshwater (R)	No	24	0	0	23	0	0	24	0	0

LIMERICK COUNTY COUNCIL (continued)

Agglomerations without secondary treatment in 2009

Agglomeration	Agglomeration P.E.	Discharge To	Sensitive	Present Treatment
Askeaton	1,850	Estuarine	No	Primary treatment only
Athea	735	Freshwater River	No	Primary treatment only
Foynes	830	Estuarine	No	Primary treatment only
Glin	990	Estuarine	No	Primary treatment only

LONGFORD COUNTY COUNCIL

Effluent Quality from Secondary Waste Water Treatment Plants in 2009

Plant Name	Pass/ Fail 2009	Agglom. PE	Plant PE	Present Treatment	Discharge To	Sensitive Yes/No	BOD No. of Samples	BOD No. of samples >25mg/l	BOD No. of samples >50mg/l	COD No. of Samples	COD No. of samples >125mg/l	COD No. of samples >250mg/l	TSS No. of Samples	TSS No. of samples >35mg/l	TSS No. of samples >87.5 mg/l
From 500 to 1,999 PE															
Clondra	P	600	600	Secondary treatment only	Freshwater (R)	No	10	0	0	11	0	0	11	0	0
From 2,000 to 10,000 PE															
Ballymahon	P	2,125	2,125	Secondary treatment with NR	Freshwater(R)	Yes	6	0	0	6	0	0	6	0	0
Edgeworthstown	P	2,750	2,750	Secondary treatment with NR	Freshwater(R)	Yes	7	0	0	7	0	0	7	0	0
Granard	P	3,200	3,200	Secondary treatment with NR	Freshwater(L)	Yes	6	0	0	6	0	0	6	0	0
From 15,001 to 50,000 PE															
Longford	P	20,000	20,000	Secondary treatment with NR	Freshwater(R)	Yes	12	0	0	12	0	0	12	0	0

Agglomerations without secondary treatment in 2009

Agglomeration	Agglomeration P.E.	Discharge To	Sensitive	Present Treatment
Drumlish	500	Freshwater River	Yes	Primary treatment only
Newtownforbes	500	Freshwater River	Yes	Primary treatment only

LOUTH COUNTY COUNCIL

Effluent Quality from Secondary Waste Water Treatment Plants in 2009

Plant Name	Pass/ Fail 2009	Agglom. PE	Plant PE	Present Treatment	Discharge To	Sensitive Yes/No	BOD No. of Samples	BOD No. of samples >25mg/l	BOD No. of samples >50mg/l	COD No. of Samples	COD No. of samples >125mg/l	COD No. of samples >250mg/l	TSS No. of Samples	TSS No. of samples >35mg/l	TSS No. of samples >87.5 mg/l
From 500 to 999 PE															
Collon	FQ	797	500	Secondary treatment only	Freshwater (R)	No	12	4	2	12	3	1	12	4	1
Louth Village	FQ	803	500	Secondary treatment only	Freshwater (R)	No	12	0	0	12	0	0	12	1	1
From 1,000 to 1,999 PE															
Carlingford	FQ	1,990	1,500	Secondary treatment only	Coastal Water	No	12	4	0	12	2	0	12	7	0
Castlebellingham	FQ	1,603	1,700	Secondary treatment only	Freshwater (R)	No	12	7	1	12	8	0	12	4	1
Dromiskin	FQ	1,471	1,200	Secondary treatment only	Freshwater (R)	No	12	3	0	12	1	0	12	5	1
Knockbridge	NR	493	1,000	Secondary treatment only	Freshwater (R)	No	0	0	0	0	0	0	0	0	0
Tallanstown	NR	400	1,000	Secondary treatment only	Freshwater (R)	No	0	0	0	0	0	0	0	0	0
Tullyallen	P	1,259	1,800	Secondary treatment only	Freshwater (R)	No	12	0	0	11	0	0	12	0	0
From 2,000 to 10,000 PE															
Ardee	P	5,800	5,000	Secondary treatment only	Freshwater (R)	No	12	0	0	12	0	0	12	0	0
Blackrock	P	4,800	6,000	Secondary treatment only	Estuarine	No	12	1	0	12	0	0	12	1	0
Clogherhead	P	1,838	2,000	Secondary treatment only	Coastal Water	No	12	0	0	12	0	0	12	1	0
Dunleer	P	2,800	4,300	Secondary treatment only	Freshwater (R)	No	12	0	0	12	0	0	12	0	0
From 50,001 to 150,000 PE															
Drogheda	P	90,000	101,000	Secondary treatment only	Estuarine	No	25	0	0	25	0	0	25	0	0
>150,000 PE															
Dundalk	FQ	89,000	179,000	Secondary treatment only	Estuarine	Yes	24	1	0	24	0	0	24	1	1

MAYO COUNTY COUNCIL

Effluent Quality from Secondary Waste Water Treatment Plants in 2009

Plant Name	Pass/ Fail 2009	Agglom. PE	Plant PE	Present Treatment	Discharge To	Sensitive Yes/No	BOD No. of Samples	BOD No. of samples >25mg/l	BOD No. of samples >50mg/l	COD No. of Samples	COD No. of samples >125mg/l	COD No. of samples >250mg/l	TSS No. of Samples	TSS No. of samples >35mg/l	TSS No. of samples >87.5 mg/l
From 500 to 999 PE															
Ballindine	FQ	527	730	Secondary treatment with NR	Freshwater (R)	No	6	0	0	6	0	0	6	3	0
Ballycastle	P	550	600	Secondary treatment only	Freshwater (R)	No	6	0	0	6	0	0	6	0	0
Belcarra	FQN	455	500	Secondary treatment only	Freshwater (R)	No	3	2	2	3	3	1	3	3	2
Doogort	FQN	130	700	Secondary treatment only	Coastal Water	No	1	1	0	1	0	0	1	1	0
Gweesalia	FQ	166	700	Secondary treatment only	Estuarine	No	6	1	1	6	1	0	6	2	1
Kilkelly	FQ	257	900	Secondary treatment only	Freshwater (R)	No	6	0	0	6	0	0	6	1	1
Kilmaine	FQ	245	800	Secondary treatment only	Freshwater (R)	No	7	2	0	7	2	0	7	3	0
Knock Airport	FN	339	700	Secondary treatment only	Freshwater (R)	No	1	0	0	1	0	0	1	0	0
Lahardane	FQ	88	500	Secondary treatment only	Freshwater (R)	No	6	3	2	6	2	0	6	1	0
Shrule	P	796	600	Secondary treatment only	Freshwater (R)	No	6	0	0	6	0	0	6	0	0
From 1,000 to 1,999 PE															
Balla	P	755	1,200	Secondary treatment only	Freshwater (R)	No	6	0	0	6	0	0	6	1	0
Bangor Erris	P	1,017	1,080	Secondary treatment only	Freshwater (R)	No	6	0	0	6	0	0	6	0	0
Bohola	P	111	650	Secondary treatment only	Freshwater (R)	No	6	0	0	6	0	0	6	0	0
Charlestown	FQ	1,356	1,200	Secondary treatment only	Freshwater (R)	No	6	4	3	6	4	1	6	4	2
Foxford	FQN	4,440	1,360	Secondary treatment only	Freshwater (R)	No	5	3	1	5	3	1	5	2	0
Louisborough	FQ	392	1,000	Secondary treatment only	Freshwater (R)	No	6	1	0	6	1	0	6	2	0
Mallaranny	P	312	1,017	Secondary treatment only	Coastal Water	No	6	0	0	6	0	0	6	0	0
From 2,000 to 10,000 PE															
Achill Island Central	P	2,366	4,000	Secondary treatment only	Coastal Water	No	12	0	0	12	0	0	12	1	0
Ballinrobe	P	10,850	8,000	Secondary treatment with NR	Freshwater (R)	No	12	0	0	12	0	0	12	1	0
Ballyhaunis	P	4,033	4,000	Secondary treatment with NR	Freshwater (R)	No	12	0	0	12	0	0	12	0	0
Claremorris	P	7,833	5,333	Secondary treatment with NR	Freshwater (R)	No	12	0	0	12	0	0	12	1	0
Cong	P	741	2,026	Secondary treatment with NR	Freshwater (L)	No	12	0	0	12	0	0	12	1	0
Crossmolina	P	1,594	3,150	Secondary treatment with NR	Freshwater (R)	No	11	0	0	11	0	0	11	0	0
Knock	P	627	6,200	Secondary treatment with NR	Freshwater (R)	No	12	0	0	12	0	0	12	0	0
Swinford	P	2,843	6,500	Secondary treatment with NR	Freshwater (R)	No	12	0	0	12	0	0	12	0	0
From 15,001 to 50,000 PE															
Ballina	FQ	35,808	25,000	Secondary treatment with NR	Estuarine	No	15	0	0	15	0	0	15	5	2
Castlebar	P	42,298	29,634	Secondary treatment with NR	Freshwater (R)	Yes	36	0	0	36	0	0	36	0	0
Westport	P	8,880	15,042	Secondary treatment with NR	Coastal Water	No	12	0	0	12	0	0	12	0	0

MAYO COUNTY COUNCIL (continued)

Agglomerations without secondary treatment in 2009

Agglomeration	Agglomeration P.E.	Discharge To	Sensitive	Present Treatment
Achill Sound	633	No collection system in place in 2009	N/A	No LA collection system in place
Belmullet	800	Coastal Water	No	No treatment
Killala	1,500	Coastal Water	No	No treatment
Kiltimagh	1,067	Freshwater River	No	Primary treatment only
Newport	408	Estuarine	No	Primary treatment only

MEATH COUNTY COUNCIL

Effluent Quality from Secondary Waste Water Treatment Plants in 2009

Plant Name	Pass/ Fail 2009	Agglom. PE	Plant PE	Present Treatment	Discharge To	Sensitive Yes/No	BOD No. of Samples	BOD No. of samples >25mg/l	BOD No. of samples >50mg/l	COD No. of Samples	COD No. of samples >125mg/l	COD No. of samples >250mg/l	TSS No. of Samples	TSS No. of samples >35mg/l	TSS No. of samples >87.5 mg/l
<500 PE															
Crossakeel	P	275	450	Secondary treatment only	Freshwater (R)	No	6	0	0	6	0	0	6	0	0
From 500 to 999 PE															
Carlanstown	P	604	600	Secondary treatment with NR	Freshwater (R)	No	6	0	0	6	0	0	6	0	0
Donore	P	726	500	Secondary treatment only	Freshwater (R)	No	6	0	0	6	0	0	6	0	0
Drumconrath	P	403	600	Secondary treatment only	Freshwater (R)	No	6	1	0	6	0	0	6	0	0
Kentstown	P	673	600	Secondary treatment with NR	Freshwater (R)	No	6	0	0	6	0	0	6	0	0
Kildalkey	P	580	900	Secondary treatment only	Freshwater (R)	No	6	0	0	6	0	0	6	0	0
Kilmainhamwood	P	436	500	Secondary treatment only	Freshwater (R)	No	6	0	0	6	0	0	6	0	0
Nobber	FQ	499	600	Secondary treatment only	Freshwater (R)	No	6	2	1	6	1	1	6	0	0
Summerhill	FQ	975	700	Secondary treatment only	Freshwater (R)	No	6	1	1	6	1	0	6	1	0
From 1,000 to 1,999 PE															
Longwood	P	1,845	1,500	Secondary treatment with NR	Freshwater (R)	No	12	0	0	12	0	0	12	0	0
Oldcastle	P	2,063	1,500	Secondary treatment with NR	Freshwater (R)	No	12	0	0	12	0	0	12	0	0
Slane	P	1,786	1,500	Secondary treatment only	Freshwater (R)	No	6	0	0	6	0	0	6	1	0
From 2,000 to 10,000 PE															
Athboy	P	3,286	5,800	Secondary treatment only	Freshwater (R)	No	12	0	0	12	0	0	12	0	0
Ballivor	P	1,792	2,000	Secondary treatment with NR	Freshwater (R)	No	12	0	0	12	0	0	12	0	0
Duleek	P	4,645	2,500	Secondary treatment with NR	Freshwater (R)	No	12	0	0	12	0	0	12	0	0
Enfield-Johnstown Bridge	FQ	3,770	3,500	Secondary treatment with NR	Freshwater (R)	No	12	1	0	12	0	0	12	1	1
Kells	P	5,555	8,000	Secondary treatment only	Freshwater (R)	No	12	0	0	12	0	0	12	0	0
Stamullen	P	3,076	2,500	Secondary treatment with NR	Freshwater (R)	No	12	0	0	12	0	0	12	0	0
From 10,001 to 15,000 PE															
Dunshaughlin	FN	7,633	12,000	Secondary treatment with NR	Freshwater (R)	No	11	0	0	11	0	0	11	0	0
Trim	P	8,013	12,000	Secondary treatment with NR	Freshwater (R)	No	12	1	0	12	0	0	12	1	0
From 15,001 to 50,000 PE															
Navan	P	37,595	50,000	Secondary treatment with NR	Freshwater (R)	Yes	26	0	0	26	0	0	26	1	0

MEATH COUNTY COUNCIL (continued)

Agglomerations without secondary treatment in 2009

Agglomeration	Agglomeration P.E.	Discharge To	Sensitive	Present Treatment
Kilcloon	194	N/A	No	No LA collection system in place, plant under construction in 2009
Moynalty	244	Freshwater River	No	Primary treatment only
Rathmoylon	377	N/A	No	No LA collection system in place, plant under construction in 2009

MONAGHAN COUNTY COUNCIL

Effluent Quality from Secondary Waste Water Treatment Plants in 2009

Plant Name	Pass/ Fail 2009	Agglom. PE	Plant PE	Present Treatment	Discharge To	Sensitive Yes/No	BOD No. of Samples	BOD No. of samples >25mg/l	BOD No. of samples >50mg/l	COD No. of Samples	COD No. of samples >125mg/l	COD No. of samples >250mg/l	TSS No. of Samples	TSS No. of samples >35mg/l	TSS No. of samples >87.5 mg/l
From 500 to 999 PE															
Annyalla	NR	200	600	Secondary treatment	Freshwater (R)	No	0	0	0	0	0	0	0	0	0
Doohamlet	NR	255	600	Secondary treatment only	Freshwater (R)	No	0	0	0	0	0	0	0	0	0
Scotshouse	FQN	354	600	Secondary treatment only	Freshwater (R)	No	4	0	0	4	1	0	4	2	0
Smithboro	P	262	750	Secondary treatment only	Freshwater (R)	No	8	0	0	8	0	0	8	0	0
From 1,000 to 1,999 PE															
Ballinode	P	434	1,000	Secondary treatment only	Freshwater (R)	No	14	0	0	14	0	0	14	0	0
Glaslough	FN	1,075	1,750	Secondary treatment with NR	Freshwater (R)	No	4	0	0	4	0	0	4	0	0
Inniskeen	P	647	1,750	Secondary treatment with NR	Freshwater (R)	No	8	0	0	8	0	0	8	0	0
Newbliss	FQ	502	1,000	Secondary treatment with NR	Freshwater (R)	No	13	4	2	13	2	0	13	4	0
Rockorrey	P	127	1,000	Secondary treatment with NR	Freshwater (R)	No	8	2	0	8	1	0	8	2	0
Scotstown	FN	253	1,000	Secondary treatment with NR	Freshwater (R)	No	5	0	0	5	0	0	5	0	0
From 2,000 to 10,000 PE															
Ballybay	P	6,036	7,283	Secondary treatment only	Freshwater (R)	No	8	0	0	8	0	0	8	0	0
Clones	FN	6,330	4,500	Secondary treatment only	Freshwater (R)	No	9	2	0	9	0	0	9	1	0
Emyvale	FQ	892	2,000	Secondary treatment with NR	Freshwater (R)	No	12	3	0	12	0	0	12	2	1
Knockaconny	P	277	3,000	Secondary treatment only	Freshwater (R)	Yes	13	0	0	13	0	0	13	0	0
From 10,001 to 15,000 PE															
Carrickmacross	P	8,425	12,150	Secondary treatment with NR	Freshwater (R)	Yes	12	0	0	12	0	0	12	0	0
Castleblayney	P	7,187	12,960	Secondary treatment with NR	Freshwater (L)	Yes	12	0	0	12	0	0	12	0	0
From 15,001 to 50,000 PE															
Monaghan	P	22,912	43,833	Secondary treatment with NR	Freshwater (R)	Yes	15	0	0	15	0	0	15	0	0

OFFALY COUNTY COUNCIL

Effluent Quality from Secondary Waste Water Treatment Plants in 2009

Plant Name	Pass/ Fail 2009	Agglom. PE	Plant PE	Present Treatment	Discharge To	Sensitive Yes/No	BOD No. of Samples	BOD No. of samples >25mg/l	BOD No. of samples >50mg/l	COD No. of Samples	COD No. of samples >125mg/l	COD No. of samples >250mg/l	TSS No. of Samples	TSS No. of samples >35mg/l	TSS No. of samples >87.5 mg/l
< 500 PE															
Ballinagar	FQ	800	200	Secondary treatment only	Freshwater(R)	No	6	2	1	6	2	1	6	4	1
From 500 to 999 PE															
Cloghan	P	754	800	Secondary treatment only	Freshwater (R)	Yes	6	0	0	6	0	0	6	0	0
Daingean	P	1,229	800	Secondary treatment only	Freshwater (R)	Yes	12	0	0	12	0	0	12	1	0
Kinnitty	FQ	536	750	Secondary treatment only	Freshwater (R)	No	7	2	0	7	0	0	7	1	0
Mucklagh	FQN	1,000	800	Secondary treatment only	Freshwater (R)	Yes	5	4	3	5	4	1	5	5	3
Shinrone	P	814	500	Secondary treatment only	Freshwater (R)	Yes	7	1	0	7	0	0	7	1	0
From 1,000 to 1,999 PE															
Rhode	P	846	1,000	Secondary treatment with NR	Freshwater (R)	No	7	0	0	7	0	0	7	0	0
From 2,000 to 10,000 PE															
Banagher	P	2,540	2,500	Secondary treatment with NR	Freshwater (R)	Yes	12	0	0	12	0	0	12	1	0
Clara	P	5,776	4,500	Secondary treatment with NR	Freshwater (R)	Yes	12	0	0	12	0	0	12	0	0
Edenderry	FQ	6,992	9,500	Secondary treatment with NR	Freshwater (R)	Yes	12	1	0	12	0	0	12	3	1
Ferbane	P	1,635	3,184	Secondary treatment with NR	Freshwater (R)	Yes	12	0	0	12	0	0	12	2	0
Kilcormac	P	1,026	2,000	Secondary treatment only	Freshwater (R)	Yes	13	1	0	13	0	0	13	1	0
From 10,001 to 15,000 PE															
Birr	P	7,659	12,000	Secondary treatment with NR	Freshwater (R)	Yes	12	0	0	12	0	0	12	1	0
From 15,001 to 50,000 PE															
Tullamore	P	25,000	16,000	Secondary treatment with NR	Freshwater (R)	Yes	12	0	0	12	0	0	12	0	0

ROSCOMMON COUNTY COUNCIL

Effluent Quality from Secondary Waste Water Treatment Plants in 2009

Plant Name	Pass/ Fail 2009	Agglom. PE	Plant PE	Present Treatment	Discharge To	Sensitive Yes/No	BOD No. of Samples	BOD No. of samples >25mg/l	BOD No. of samples >50mg/l	COD No. of Samples	COD No. of samples >125mg/l	COD No. of samples >250mg/l	TSS No. of Samples	TSS No. of samples >35mg/l	TSS No. of samples >87.5 mg/l
From 500 to 999 PE															
Ballinlough	P	675	800	Secondary treatment with NR	Freshwater (L)	Yes	10	0	0	10	0	0	10	0	0
Elphin	P	1,160	800	Secondary treatment only	Freshwater (R)	No	7	0	0	7	0	0	7	0	0
Frenchpark	FQ	705	500	Secondary treatment only	Freshwater (R)	Yes	12	12	10	12	10	5	12	11	4
Hodson Bay	FQ	638	800	Secondary treatment only	Freshwater (L)	Yes	12	1	1	12	5	1	12	9	2
Roosky	NR	1,536	800	Secondary treatment with NR	Freshwater (R)	No	0	0	0	0	0	0	0	0	0
Tarmonbarry	FN	500	600	Secondary treatment only	Freshwater (R)	Yes	5	0	0	6	0	0	6	1	0
From 1,000 to 1,999 PE															
Ballyleague	FQ	981	1,500	Secondary treatment only	Freshwater (L)	Yes	11	2	2	12	3	2	12	4	1
Strokestown	P	1,463	1,000	Secondary treatment only	Freshwater (R)	Yes	11	0	0	11	0	0	11	0	0
From 2,000 to 10,000 PE															
Ballaghaderreen	P	4,029	2,500	Secondary treatment with NR	Freshwater (R)	No	12	1	0	12	0	0	12	0	0
Boyle	FQ	5,338	6,000	Secondary treatment with NR	Freshwater (R)	No	12	0	0	12	0	0	12	2	1
Castlerea	P	4,590	3,000	Secondary treatment with NR	Freshwater (R)	No	12	0	0	12	0	0	12	0	0
Roscommon	P	9,458	9,550	Secondary treatment with NR	Freshwater (R)	Yes	12	0	0	11	0	0	12	0	0
From 10,001 to 15,000 PE															
Monksland	FQ	14,381	14,381	Secondary treatment with NR	Freshwater (R)	No	12	2	2	12	2	1	13	3	2

SLIGO COUNTY COUNCIL

Effluent Quality from Secondary Waste Water Treatment Plants in 2009

Plant Name	Pass/ Fail 2009	Agglom. PE	Plant PE	Present Treatment	Discharge To	Sensitive Yes/No	BOD No. of Samples	BOD No. of samples >25mg/l	BOD No. of samples >50mg/l	COD No. of Samples	COD No. of samples >125mg/l	COD No. of samples >250mg/l	TSS No. of Samples	TSS No. of samples >35mg/l	TSS No. of samples >87.5 mg/l
< 500 PE															
Cliffoney	NR	710	450	Secondary treatment only	Freshwater (R)	No	0	0	0	0	0	0	0	0	0
Easkey	NR	550	450	Secondary treatment only	Freshwater (R)	No	0	0	0	0	0	0	0	0	0
Grange	NR	844	280	Secondary treatment only	Freshwater (R)	No	0	0	0	0	0	0	0	0	0
From 500 to 999 PE															
Riverstown	FQ	357	600	Secondary treatment only	Freshwater (R)	No	8	4	3	8	5	2	8	5	1
From 1,000 to 1,999 PE															
Collooney	FQ	1,930	1,400	Secondary treatment only	Freshwater (R)	No	12	11	6	11	7	4	12	9	3
Strandhill	FQ	1,833	1,500	Secondary treatment only	Coastal Water	No	12	9	5	12	3	1	12	7	1
Tubbercurry	FQ	2,283	1,400	Secondary treatment only	Freshwater (R)	No	12	10	6	12	9	2	12	8	3
From 2,000 to 10,000 PE															
Ballisadare	FQN	1,766	4,500	Secondary treatment only	Estuarine	No	11	1	1	10	1	1	11	1	0
Ballymote	FQ	2,553	3,000	Secondary treatment only	Freshwater (R)	No	12	5	2	12	0	0	12	0	0
Carney	P	634	2,500	Secondary treatment with NR	Freshwater (R)	No	14	0	0	14	0	0	14	0	0
Coolaney	FN	1,503	2,500	Secondary treatment with NR	Freshwater (R)	No	5	0	0	5	0	0	5	0	0
Enniscrone	P	3,795	5,000	Secondary treatment only	Coastal Water	No	13	0	0	12	0	0	13	0	0
Gurteen	P	1,023	2,500	Secondary treatment with NR	Freshwater (R)	No	15	0	0	15	0	0	15	0	0
From 15,001 to 50,000 PE															
Sligo	P	30,195	50,000	Secondary treatment with NR	Coastal Water	No	39	0	0	39	0	0	39	1	0

Agglomerations without secondary treatment in 2009

Agglomeration	Agglomeration P.E.	Discharge To	Sensitive	Present Treatment
Mullaghmore	940	Coastal Water	No	Primary treatment only
Rosses Point	1,400	Coastal Water	No	Primary treatment only

TIPPERARY NORTH COUNTY COUNCIL

Effluent Quality from Secondary Waste Water Treatment Plants in 2009

Plant Name	Pass/ Fail 2009	Agglom. PE	Plant PE	Present Treatment	Discharge To	Sensitive Yes/No	BOD No. of Samples	BOD No. of samples >25mg/l	BOD No. of samples >50mg/l	COD No. of Samples	COD No. of samples >125mg/l	COD No. of samples >250mg/l	TSS No. of Samples	TSS No. of samples >35mg/l	TSS No. of samples >87.5 mg/l
From 500 to 999 PE															
Holycross	FQ	650	600	Secondary treatment only	Freshwater (R)	Yes	6	1	0	6	1	0	6	1	1
Twomile Borris	P	600	800	Secondary treatment only	Freshwater (R)	No	6	0	0	6	0	0	6	0	0
Cloughjordan	FQ	650	500	Secondary treatment only	Freshwater (R)	No	6	5	1	6	1	0	6	2	0
From 1,000 to 1,999 PE															
Borrisokane	P	1,033	1,500	Secondary treatment only	Freshwater (R)	No	6	0	0	6	0	0	6	0	0
Littleton	P	600	1,000	Secondary treatment only	Freshwater (R)	No	6	0	0	6	0	0	6	0	0
Newport	P	983	1,720	Secondary treatment only	Freshwater (R)	No	6	0	0	6	0	0	6	0	0
From 2,000 to 10,000 PE															
Ballina	P	4,024	4,000	Secondary treatment with NR	Freshwater (R)	No	12	0	0	12	0	0	12	0	0
Borrisoleigh	FQ	2,195	2,000	Secondary treatment with NR	Freshwater (R)	No	15	4	2	15	2	0	15	4	1
From 10,001 to 15,000 PE															
Nenagh	P	18,373	12,000	Secondary treatment with NR	Freshwater (R)	Yes	20	0	0	20	0	0	20	0	0
Thurles	P	9,594	15,000	Secondary treatment with NR	Freshwater (R)	Yes	13	0	0	13	0	0	13	1	0
From 15,001 to 50,000 PE															
Roscrea	P	8,684	26,000	Secondary treatment with NR	Freshwater (R)	Yes	12	0	0	12	0	0	12	0	0

Agglomerations without secondary treatment in 2009

Agglomeration	Agglomeration P.E.	Discharge To	Sensitive	Present Treatment
Templemore	3,500	Freshwater River	Yes	Secondary treatment plant commissioned in 2010

TIPPERARY SOUTH COUNTY COUNCIL

Effluent Quality from Secondary Waste Water Treatment Plants in 2009

Plant Name	Pass/ Fail 2009	Agglom. PE	Plant PE	Present Treatment	Discharge To	Sensitive Yes/No	BOD No. of Samples	BOD No. of samples >25mg/l	BOD No. of samples >50mg/l	COD No. of Samples	COD No. of samples >125mg/l	COD No. of samples >250mg/l	TSS No. of Samples	TSS No. of samples >35mg/l	TSS No. of samples >87.5 mg/l
From 500 to 999 PE															
Limerick Junction	P	656	500	Secondary treatment only	Freshwater (R)	No	6	1	0	7	0	0	7	0	0
Mullinahone	FQ	641	800	Secondary treatment only	Freshwater (R)	No	6	2	2	6	2	0	6	3	1
From 1,000 to 1,999 PE															
Ardfinnan	P	1,070	1,000	Secondary treatment with NR	Freshwater (R)	Yes	13	0	0	15	0	0	15	0	0
Clogheen	P	533	1,000	Secondary treatment with NR	Freshwater (R)	No	12	0	0	14	0	0	14	0	0
Killenaule	P	727	1,200	Secondary treatment with NR	Freshwater (R)	Yes	14	0	0	16	0	0	16	0	0
Kilsheelan	P	460	1,000	Secondary treatment with NR	Freshwater (R)	Yes	12	0	0	14	0	0	14	1	0
From 2,000 to 10,000 PE															
Ballyclerihan	P	536	2,000	Secondary treatment with NR	Freshwater (R)	Yes	14	0	0	17	0	0	17	0	0
Cahir	P	4,390	5,000	Secondary treatment only	Freshwater (R)	Yes	12	1	0	14	1	0	14	1	0
Cashel	P	6,842	9,000	Secondary treatment only	Freshwater (R)	Yes	12	0	0	14	0	0	14	0	0
Fethard	P	2,684	3,000	Secondary treatment with NR	Freshwater (R)	No	12	0	0	14	0	0	14	0	0
Tipperary Town	P	8,732	9,800	Secondary treatment with NR	Freshwater (R)	Yes	12	0	0	14	0	0	14	0	0
From 10,001 to 15,000 PE															
Carrick-on-Suir	P	7,557	11,000	Secondary treatment with NR	Freshwater (R)	Yes	12	0	0	14	0	0	14	2	0
From 50,001 to 150,000 PE															
Clonmel	P	46,428	80,000	Secondary treatment with NR	Freshwater (R)	Yes	24	0	0	26	0	0	26	0	0

Agglomerations without secondary treatment in 2009

Agglomeration	Agglomeration P.E.	Discharge To	Sensitive	Present Treatment
Cappawhite	623	Freshwater River	No	Primary treatment only

WATERFORD CITY COUNCIL

Effluent Quality from Secondary Waste Water Treatment Plants in 2009

Plant Name	Pass/ Fail 2009	Agglom. PE	Plant PE	Present Treatment	Discharge To	Sensitive Yes/No	BOD No. of Samples	BOD No. of samples >25mg/l	BOD No. of samples >50mg/l	COD No. of Samples	COD No. of samples >125mg/l	COD No. of samples >250mg/l	TSS No. of Samples	TSS No. of samples >35mg/l	TSS No. of samples >87.5 mg/l
>150,001 PE															
Waterford City	P	122,358	190,600	Secondary treatment only*	Estuarine	No	58	0	0	58	0	0	56	2	0

WATERFORD COUNTY COUNCIL

Effluent Quality from Secondary Waste Water Treatment Plants in 2009

Plant Name	Pass/ Fail 2009	Agglom. PE	Plant PE	Present Treatment	Discharge To	Sensitive Yes/No	BOD No. of Samples	BOD No. of samples >25mg/l	BOD No. of samples >50mg/l	COD No. of Samples	COD No. of samples >125mg/l	COD No. of samples >250mg/l	TSS No. of Samples	TSS No. of samples >35mg/l	TSS No. of samples >87.5 mg/l
From 500 to 999 PE															
Ballinroad	FQ	1,200	750	Secondary treatment only	Estuarine	No	6	6	5	6	5	4	6	2	0
From 1,000 to 1,999 PE															
Lismore	P	1,600	1,500	Secondary treatment only	Freshwater (R)	Yes	6	0	0	6	0	0	6	0	0
Portlaoise	FQ	1,500	1,750	Secondary treatment only	Freshwater (R)	Yes	6	4	2	6	3	0	6	4	0
Ballinagoul	P	900	1,000	Secondary treatment only	Coastal Water	No	12	0	0	12	0	0	12	0	0
From 15,001 to 50,000 PE															
Dungarvan	P	13,000	20,000	Secondary treatment only	Coastal Water	No	12	0	0	12	0	0	12	0	0
Tramore	P	12,000	15,300	Secondary treatment only	Coastal Water	No	12	0	0	12	0	0	12	0	0

Agglomerations without secondary treatment in 2009

Agglomeration	Agglomeration P.E.	Discharge To	Sensitive	Present Treatment
Ardmore	876	Coastal Water	No	No treatment
Cappoquin	1,285	Freshwater River	Yes	Primary treatment only
Dunmore East	1,600	Coastal Water	No	No treatment
Kilmactomas	600	Freshwater River	No	Primary treatment only
Stradbally	500	Estuarine	No	Primary treatment only
Tallow	1,200	Freshwater River	Yes	Primary treatment only

WESTMEATH COUNTY COUNCIL

Effluent Quality from Secondary Waste Water Treatment Plants in 2009

Plant Name	Pass/ Fail 2009	Agglom. PE	Plant PE	Present Treatment	Discharge To	Sensitive Yes/No	BOD No. of Samples	BOD No. of samples >25mg/l	BOD No. of samples >50mg/l	COD No. of Samples	COD No. of samples >125mg/l	COD No. of samples >250mg/l	TSS No. of Samples	TSS No. of samples >35mg/l	TSS No. of samples >87.5 mg/l
From 500 to 999 PE															
Ballymore	FQ	451	500	Secondary treatment only	Freshwater (R)	No	12	1	0	12	2	1	12	1	0
Ballynacarrigy	P	416	600	Secondary treatment with NR	Freshwater (R)	No	12	0	0	13	0	0	13	1	0
Multyfarnham	P	477	700	Secondary treatment only	Freshwater (R)	No	12	0	0	12	1	0	12	0	0
From 1,000 to 1,999 PE															
Clonmellon	P	800	1,500	Secondary treatment only	Freshwater (R)	Yes	12	0	0	13	0	0	13	0	0
Collinstown	P	387	1,000	Secondary treatment with NR	Freshwater (R)	No	12	1	0	12	0	0	12	1	0
Delvin	P	833	1,250	Secondary treatment only	Freshwater (R)	Yes	12	0	0	13	0	0	13	1	0
From 2,000 to 10,000 PE															
Castlepollard	P	2,000	6,500	Secondary treatment with NR	Freshwater (R)	Yes	12	0	0	12	0	0	12	0	0
Kilbeggan	FQ	2,895	2,460	Secondary treatment with NR	Freshwater (R)	Yes	12	2	0	12	1	0	12	2	1
Killucan	FQ	1,283	2,500	Secondary treatment with NR	Freshwater (R)	Yes	12	0	0	13	0	0	13	1	1
Kinnegad	FQ	3,126	4,800	Secondary treatment with NR	Freshwater (R)	Yes	12	1	0	13	0	0	13	3	0
Moate	P	5,705	5,000	Secondary treatment with NR	Freshwater (R)	Yes	12	0	0	12	0	0	12	1	0
Rochfortbridge	FQ	1,725	3,000	Secondary treatment only	Freshwater (R)	Yes	13	4	1	12	2	1	13	4	1
Tyrellspass	P	655	2,000	Secondary treatment with NR	Freshwater (R)	Yes	12	0	0	12	0	0	12	1	0
From 15,001 to 50,000 PE															
Athlone	P	27,000	30,000	Secondary treatment with NR	Freshwater (R)	Yes	12	0	0	12	0	0	12	0	0
Mullingar	P	25,643	55,000	Secondary treatment with NR	Freshwater (R)	Yes	12	0	0	13	0	0	12	0	0

WEXFORD COUNTY COUNCIL

Effluent Quality from Secondary Waste Water Treatment Plants in 2009

Plant Name	Pass/ Fail 2009	Agglom. PE	Plant PE	Present Treatment	Discharge To	Sensitive Yes/No	BOD No. of Samples	BOD No. of samples >25mg/l	BOD No. of samples >50mg/l	COD No. of Samples	COD No. of samples >125mg/l	COD No. of samples >250mg/l	TSS No. of Samples	TSS No. of samples >35mg/l	TSS No. of samples >87.5 mg/l
From 500 to 999 PE															
Ballaghkeen	P	469	500	Secondary treatment with NR	Freshwater (R)	No	12	1	0	12	0	0	12	0	0
Ballymurn	P	661	600	Secondary treatment with NR	Freshwater (R)	Yes	12	0	0	12	0	0	12	0	0
Clonroche	P	613	650	Secondary treatment only	Freshwater (R)	No	12	1	0	12	0	0	12	0	0
Piercetown	FQ	785	800	Secondary treatment with NR	Freshwater (R)	Yes	12	3	1	12	0	0	12	0	0
Taghmon	FQ	980	600	Secondary treatment only	Freshwater (R)	No	12	11	7	12	8	3	12	7	1
Tagoat	NR	643	750	Secondary treatment with NR	Freshwater (R)	No	0	0	0	0	0	0	0	0	0
From 2,000 to 10,000 PE															
Blackwater-	FQ	1,038	2,000	Secondary treatment only	Freshwater (R)	No	13	5	0	13	1	0	13	2	0
Bridgetown	old plant	FQ	750	Secondary treatment only	Freshwater (R)	No	11	5	2	11	3	3	11	4	1
	new plant	Note	2,000	Secondary treatment with NR	Estuarine	No	5	0	0	5	0	0	5	0	0
Castlebridge	P	2,241	2,000	Secondary treatment only	Estuarine	Yes	12	2	0	12	0	0	12	1	0
Coolgreaney ³	Note	546	2,400	Secondary treatment only	Freshwater (R)	No	5	0	0	5	0	0	5	0	0
Ferns South	FQ	1,808	2,150	Secondary treatment with NR	Freshwater (R)	Yes	12	3	1	12	0	0	12	2	0
Kilmuckridge	FQ	1,686	2,000	Secondary treatment only	Freshwater (R)	No	12	2	1	12	1	1	12	2	1
Rosslare Harbour	P	3,938	9,400	Secondary treatment only	Coastal Water	No	17	0	0	17	0	0	17	0	0
Rosslare Strand	FQ	6,240	7,500	Secondary treatment only	Coastal Water	No	14	5	3	14	2	1	14	6	1
From 10,001 to 15,000 PE															
Courtown/ Gorey	FQ	17,000	12,000	Secondary treatment only	Coastal Water	No	12	0	0	12	0	0	12	1	1
			5,000	Secondary treatment with NR	Freshwater (R)	No	12	1	1	12	0	0	12	3	0
From 15,001 to 50,000 PE															
Enniscorthy/ Killagoley	FQ	17,216	16,500	Secondary treatment only	Estuarine	Yes	12	2	0	12	2	1	12	4	2
			850	Secondary treatment only	Freshwater (R)	Yes	12	9	4	12	4	3	12	7	2
Wexford Town	P	32,000	30,000	Secondary treatment with NR	Estuarine	Yes	29	0	0	29	1	0	29	0	0

³ New plants were commissioned during 2009 for Bridgetown and Coolgreaney, no compliance assessment was carried out for the new plants

WEXFORD COUNTY COUNCIL (continued)

Agglomerations without secondary treatment in 2009

Agglomeration	Agglomeration P.E.	Discharge To	Sensitive	Present Treatment
Ballycanew	840	Freshwater River	No	Primary treatment only
Bunclody	3,104	Freshwater River	Yes	Secondary treatment plant commissioned in 2010
Camolin	630	Freshwater River	No	Primary treatment only
Campile	639	Estuarine	Yes	Primary treatment only
Duncannon	1,172	Coastal Water	Yes	No treatment
Fetherd-on-Sea	912	Estuarine	No	Primary treatment only
Kilmore Quay	1,386	Coastal Water	No	No treatment
New Ross	10,000	Estuarine	No⁴	Secondary treatment plant commissioned in 2010

⁴ New Ross WWTP primary discharge does not discharge directly to sensitive water, however considering the tidal nature of the water body, ELVs for phosphorous and nitrogen parameters have been set in the WWDL in line with the requirements of the Urban Waste Water Treatment Regulations, 2001 for sensitive waters.

WICKLOW COUNTY COUNCIL

Effluent Quality from Secondary Waste Water Treatment Plants in 2009

Plant Name	Pass/ Fail 2009	Agglom. PE	Plant PE	Present Treatment	Discharge To	Sensitive Yes/No	BOD No. of Samples	BOD No. of samples >25mg/l	BOD No. of samples >50mg/l	COD No. of Samples	COD No. of samples >125mg/l	COD No. of samples >250mg/l	TSS No. of Samples	TSS No. of samples >35mg/l	TSS No. of samples >87.5 mg/l	
From 500 to 999 PE																
Ballinaclash	P	300	900	Secondary treatment with NR	Freshwater (R)	No	8	2	0	8	1	0	8	2	0	
Dunlavin	Logatryna	FQ	1,378	300	Secondary treatment only	Freshwater (R)	No	6	6	4	6	4	3	6	6	4
	Milltown	P	581	600	Secondary treatment only	Freshwater (R)	No	6	0	0	6	0	0	6	0	0
Kilpedder	P	679	600	Secondary treatment only	Freshwater (R)	No	6	0	0	6	0	0	6	0	0	
Rathnew	P	1,530	600	Secondary treatment only	Freshwater (R)	No	6	0	0	6	0	0	6	0	0	
Shillelagh	P	550	800	Secondary treatment only	Freshwater (R)	No	7	1	0	7	0	0	7	1	0	
Stratford	NR	275	600	Secondary treatment only	Freshwater (R)	Yes	0	0	0	0	0	0	0	0	0	
From 1,000 to 1,999 PE																
Ashford	P	1,090	1,090	Secondary treatment only	Freshwater (R)	No	6	0	0	6	0	0	6	0	0	
Aughrim	P	1,314	1,200	Secondary treatment only	Freshwater (R)	No	6	0	0	6	0	0	6	0	0	
Laragh	P	770	1,000	Secondary treatment only	Freshwater (R)	No	6	0	0	6	0	0	6	0	0	
Newcastle	P	837	1,000	Secondary treatment only	Freshwater (R)	No	6	0	0	6	0	0	6	0	0	
Redcross	P	1,047	1,000	Secondary treatment with NR	Freshwater (R)	No	6	0	0	6	0	0	6	0	0	
Roundwood	P	1,157	1,600	Secondary treatment only	Freshwater (R)	No	6	0	0	6	0	0	6	0	0	
Tinahely	P	1,199	1,200	Secondary treatment only	Freshwater (R)	No	6	0	0	6	0	0	6	0	0	
From 2,000 to 10,000 PE																
Baltinglass	P	2,653	3,000	Secondary treatment only	Freshwater (R)	No	12	0	0	12	0	0	12	0	0	
Blessington	P	4,500	6,000	Secondary treatment with NR	Freshwater (L)	No	13	0	0	13	0	0	13	2	0	
Carnew	P	2,300	2,400	Secondary treatment only	Freshwater (R)	No	12	0	0	12	0	0	12	0	0	
Enniskerry	P	5,217	6,000	Secondary treatment with NR	Freshwater (R)	No	12	0	0	12	0	0	12	0	0	
Kilcoole	P	1,529	2,400	Secondary treatment only	Freshwater (R)	No	12	0	0	12	0	0	12	0	0	
Rathdrum	P	1,500	3,500	Secondary treatment with NR	Freshwater (R)	No	13	1	0	13	0	0	13	0	0	
From 15,001 to 50,000 PE																
Greystones	P	35,000	30,000	Secondary treatment only	Coastal Water	No	21	0	0	21	0	0	21	0	0	

WICKLOW COUNTY COUNCIL (continued)

Agglomerations without secondary treatment in 2009

Agglomeration	Agglomeration P.E.	Discharge To	Sensitive	Present Treatment
Arklow	16,997	Freshwater River	No	No treatment
Avoca	1,214	Freshwater River	No	Primary treatment
Bray	35,000	Coastal Water	No	Preliminary treatment
Wicklow	21,235	Coastal Water	No	Secondary treatment plant commissioned Dec 2009

Appendix C: Waste water treatment plants prioritised for enforcement to protect freshwater pearl mussel catchments

Management plans have been produced for the National Parks and Wildlife Service which provide programmes of measures required to improve freshwater pearl mussel habitats. The plans include an assessment of waste water treatment plants deemed to be a pressure on the freshwater pearl mussel or its habitat. These freshwater pearl mussel plans can be viewed on the Water Framework Directive website: www.wfdireland.ie

WWDL/Cert of Auth. Reg. No.	Agglomeration	County	Pearl Mussel Catchment	Comment
D0243-01	Hacketstown	Carlow	Derreen	Directly affecting majority of mussels within catchment
A0389-01	Ardgroom	Cork	Ownagappul	Very high density mussels currently under threat from single septic tanks which need to be connected up to WWTP which is already overloaded.
D0160-01	Dunmanway	Cork	Bandon	Directly affecting mussels downstream
A0336-01	Freemount	Cork	Munster Blackwater	Can impact two pearl mussel populations - Allow & Munster Blackwater
D0203-01	Kanturk	Cork	Munster Blackwater	Can impact two pearl mussel populations - Allow & Munster Blackwater
D0052-01	Mallow	Cork	Munster Blackwater	Located within pearl mussel population
A0337-01	Meelin	Cork	Munster Blackwater	Can impact two pearl mussel populations - Allow & Munster Blackwater
D0332-01	Millstreet	Cork	Munster Blackwater	Pearl Mussels located downstream of plant within this river
D0441-01	Ballyclough	Cork	Munster Blackwater	Pearl Mussels located downstream of plant within this river
D0302-01	Dromahane	Cork	Munster Blackwater	Near to mussel population
A0346-01	Kiskeam	Cork	Munster Blackwater	Pearl Mussels located downstream of plant within this river
A0327-01	Lombardstown	Cork	Munster Blackwater	Upstream of mussels
D0448-01	Banteer	Cork	Munster Blackwater	Considerable distance upstream of the mussels
D0437-01	Boherbue	Cork	Munster Blackwater	Considerable distance upstream of the mussels
D0210-01	Glenties	Donegal	Ownea	Significant factor leading to loss of this mussel population
D0192-01	Oughterard	Galway	Owenriff	Very high density mussels currently under threat from single septic tanks which need to be connected up to WWTP which is already overloaded.
D0419-01	Rathmore	Kerry	Munster Blackwater	Close to old records which require confirmation but may have impact
D0156-01	Abbeyleix	Laois	Nore	Upstream of unique mussel population
D0385-01	Ballyroan	Laois	Nore	Upstream of unique mussel population

WWDL/Cert of Auth. Reg. No.	Agglomeration	County	Pearl Mussel Catchment	Comment
D0153-01	Mountrath	Laois	Nore	Upstream of unique mussel population
D0387-01	Castletown	Laois	Nore	Upstream of unique mussel population
A0377-01	Clonea Power	Waterford	Clodiagh	Pearl Mussels located downstream of plant within this river
A0319-01	Cecilstown	Cork	Munster Blackwater	Pearl Mussels located downstream of plant within this river
A0326-01	Ballydesmond	Cork	Munster Blackwater	Considerable distance upstream of the mussels
A0342-01	Cullen	Cork	Munster Blackwater	Considerable distance upstream of the mussels
A0344-01	Knocknagree	Cork	Munster Blackwater	Considerable distance upstream of the mussels
A0345-01	Nad	Cork	Munster Blackwater	Impact probably low due to size of town but close to mussel population
A0328-01	Rathcoole	Cork	Munster Blackwater	Impact probably low due to size of town but close to mussel population
D0290-01	Borris-in-Ossory	Laois	Nore	Upstream of unique mussel population
D0248-01	Borris	Carlow	Mountain	Downstream of main pearl mussel population
D0513-01	Kilmacrennan	Donegal	Leannan	Downstream of main pearl mussel population
A0047-01	Knockananna	Wicklow	Derreen	Cumulative effect of Kiltegan, Knockananna, Rathdangan and Ticknock
A0229-01	Ticknock	Carlow	Derreen	Cumulative effect of Kiltegan, Knockananna, Rathdangan and Ticknock
A0004-01	Kiltegan	Wicklow	Derreen	Cumulative effect of Kiltegan, Knockananna, Rathdangan and Ticknock
A0005-01	Rathdangan	Wicklow	Derreen	Cumulative effect of Kiltegan, Knockananna, Rathdangan and Ticknock

Appendix D: Seriously polluted river locations where the source of pollution is attributed to urban waste water discharges

WWDL Reg. No.	Licensing Status (at time of reporting)	Agglomeration	Water Services Authority	River	River Code	Location
D0193-01	Applied - Assessment	Athenry	Galway	Clarinbridge	29C020300	Bridge north of Mulpit
D0386-01	Licensed	Clonaslee	Laois	Clodiagh (Tullamore)	25C060220	Just upstream of River Gorragh confluence
D0316-01	Applied - Assessment	Dromcollagher	Limerick	Ahavarraga Stream	24A020400	Bridge 0.5 km downstream of Priests Bridge
D0212-01	Applied - Assessment	Moville	Donegal	Bredagh	40B020400	Bridge in Moville
D0008-01	Licensed	Mullingar	Westmeath	Brosna	25B090100	Butler's Bridge
D0209-01	Licensed	Raphoe	Donegal	Swilly Burn	01S030200	Bridge 1.5 km south east of Raphoe
D0116-01	Applied - Assessment	Roscommon	Roscommon	Jiggy (Hind)	26J010090	Bridge west south west of Ardsallagh Beg
D0092-01	Applied - Assessment	Tubbercurry	Sligo	Tubbercurry	34T020050	Bridge 1 km west of Tubbercurry
D0092-01	Applied - Assessment	Tubbercurry	Sligo	Tubbercurry Stream	34T030400	At old railway bridge

Designated bathing areas with poor water quality status

Designated bathing area where the discharge of urban waste water from an overloaded treatment plant is the principle cause of poor quality bathing water since 2005¹.

WWDL Reg. No.	Licensing Status	Agglomeration	Water Services Authority	Bathing Area
D0198-01	Licensed	Clifden	Galway County Council	Clifden Beach

Designated bathing areas where waste water discharges are considered a contributing factor to poor water quality status in 2010

WWDL Reg. No.	Licensing Status	Agglomeration	Water Services Authority	Bathing Area
D0034-01	Licensed	Greater Dublin (Ringsend)	Dublin City Council, Fingal, South Dublin, Dun Laoghaire – Rathdown & Meath County Councils	Sutton Burrow Beach
D0008-01	Licensed	Mullingar	Westmeath County Council	Lilliput, Lough Ennel

¹ Refer to www.bathingwater.ie for more details on bathing water quality.

Appendix E: Moderately or slightly polluted river locations where there is a high probability that the principle cause of pollution can be attributed to urban waste water discharges.

WWDL/Cert of Auth. Reg. No.	Agglomeration	River	County	River Code
D0372-01	Ahascragh	Ahascragh	Galway	26A010400
D0193-01	Athenry	Clarinbridge	Galway	29C020400
D0193-01	Athenry	Clarinbridge	Galway	29C020500
D0216-01	Balla	Loughnaminoe Stream	Mayo	34L040200
D0355-01	Ballindine	Ballindine	Mayo	30B030200
D0120-01	Ballybofey/Stranorlar	Finn (Donegal)	Donegal	01F010800
D0323-01	Borrisoleigh	Borrisoleigh Stream	Tipperary North	16B060600
D0303-01	Buttevant	Awbeg (Buttevant)	Cork	18A050700
D0062-01	Carrickmacross	Proules	Monaghan	06P010300
D0047-01	Castlebar	Castlebar	Mayo	34C010200
D0047-01	Castlebar	Castlebar	Mayo	34C010180
D0047-01	Castlebar	Castlebar	Mayo	34C010300
D0047-01	Castlebar	Castlebar	Mayo	34C010400
D0020-01	Cavan	Cavan	Cavan	36C020300
D0214-01	Charlestown	Mullaghanoe	Sligo	34M030200
D0214-01	Charlestown	Charlestown Stream	Sligo	34C280100
D0204-01	Charleville & Environs	Charleville Stream	Cork	24C020500
D0071-01	Claremorris	Robe	Mayo	30R010310
D0071-01	Claremorris	Robe	Mayo	30R010400
D0242-01	Coill Dubh	Slate	Kildare	14S010020
D0344-01	Convoy	Deele (Donegal)	Donegal	01D010500
D0046-01	Courtown/Gorey	Banoge	Wexford	11B020200
D0144-01	Drumshanbo	Drumshanbo Stream	Leitrim	26D050300
D0160-01	Dunmanway	Bandon	Cork	20B020300
D0370-01	Dunmore	Sinking	Galway	30S010300
D0058-01	Fermoy	Blackwater (Munster)	Cork	18B022200
D0187-01	Granard	Rhine	Longford	26R040200
D0178-01	Kildare Town	Tully Stream	Kildare	14T020300
D0178-01	Kildare Town	Tully Stream	Kildare	14T020390
D0178-01	Kildare Town	Tully Stream	Kildare	14T020200
D0357-01	Kilkelly	Trimoge	Mayo	34T010200
D0037-01	Killarney	Flesk (Kerry)	Kerry	22F020310
D0513-01	Kilmacrennan	Lurgy	Donegal	39L020300
D0275-01	Kilmacthomas	Mahon	Waterford	17M010200
A0091-01 ¹	Kilmihil	Kilmihil Stream	Clare	28K020200
D0217-01	Kiltimagh	Pollagh	Mayo	34P010260

¹ This agglomeration has a population equivalent of less than 500 and consequently has a certificate of authorisation rather than a waste water discharge licence.

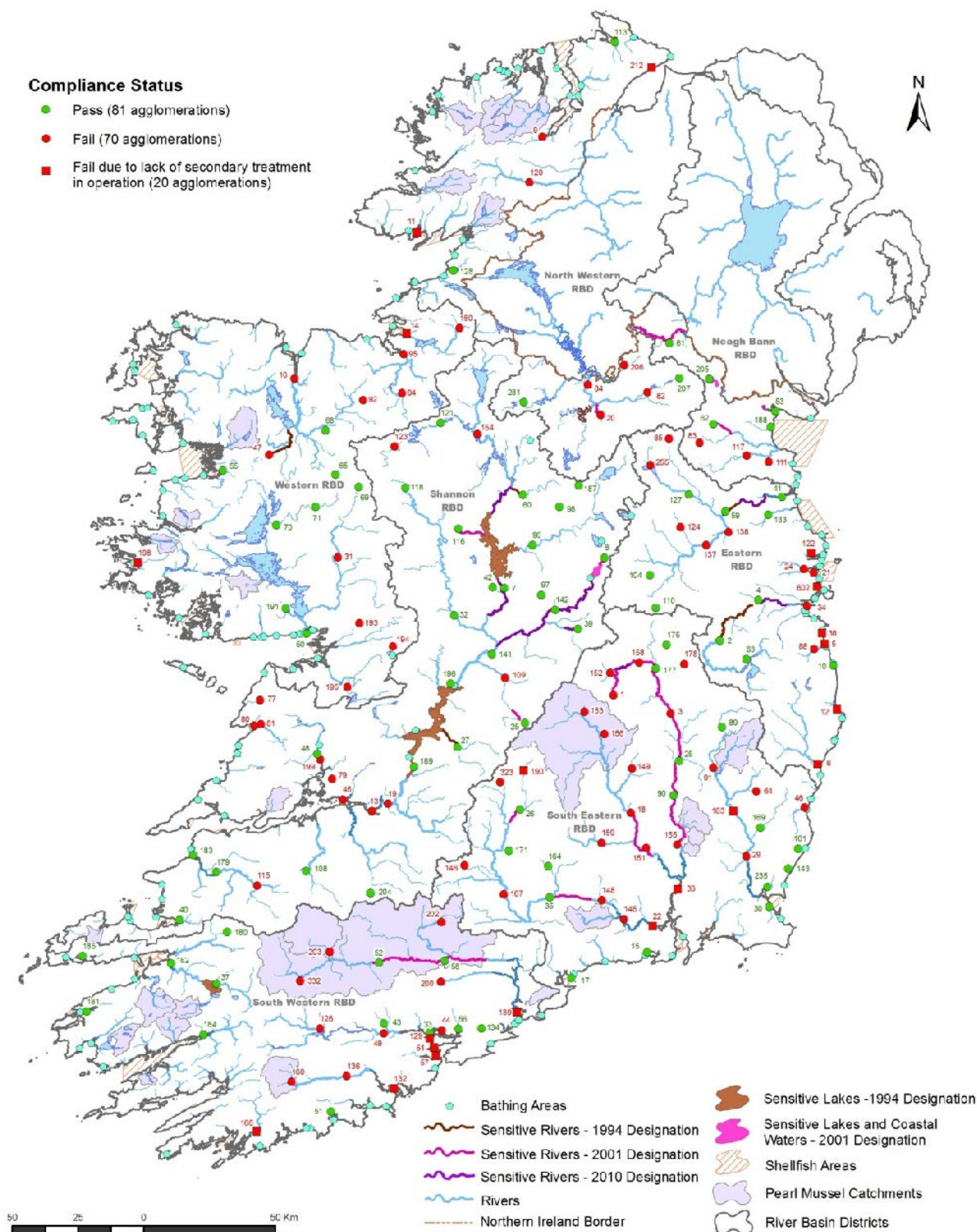
WWDL/Cert of Auth. Reg. No.	Agglomeration	River	County	River Code
D0065-01	Knock	Yellow (Knock)	Mayo	34Y020250
D0077-01	Lisdoonvarna	Aille (Clare)	Clare	28A010300
D0342-01	Milford	Maggy's Burn	Donegal	39M010300
D0061-01	Monaghan	Shambles	Monaghan	03S010500
D0219-01	Mountbellew	Castlegar	Galway	26C030200
D0191-01	Moycullen	Ballycurke	Galway	30B140100
D0252-01	Mullagh	Mullagh Lough Stream	Meath	07M060400
D0008-01	Mullingar	Brosna	Westmeath	25B090040
D0410-01	Newcastle	Newcastle (Wicklow)	Wicklow	10N010600
D0108-01	Newcastle West	Deel (Newcastlewest)	Limerick	24D021300
D0001-01	Portlaoise	Ratheven Stream	Laois	14R050300
D0034-01	Greater Dublin (Ringsend)	Tolka	Fingal	09T011000
D0034-01	Greater Dublin (Ringsend)	Broadmeadow	Meath	08B020500
D0034-01	Greater Dublin (Ringsend)	Tolka	Dublin City	09T011100
D0034-01	Greater Dublin (Ringsend)	Liffey	South Dublin	09L012360
D0116-01	Roscommon	Hind	Roscommon	26H010300
D0116-01	Roscommon	Hind	Roscommon	26H010400
D0116-01	Roscommon	Hind	Roscommon	26H010500
D0025-01	Roscrea	Little Brosna	Offaly	25L020400
D0038-01	Shanganagh	Kill of the Grange Stream	Dun Laoghaire- Rathdown	10K020500
D0038-01	Shanganagh	Kill of the Grange Stream	Dun Laoghaire- Rathdown	10K020200
D0338-01	Stonyford	King's (Kilkenny)	Kilkenny	15K020900
D0228-01	Strokestown	Strokestown	Roscommon	26S080100
D0389-01	Taghmon	Duncormick	Wexford	13D010200
D0190-01	Templemore	Suir	Tipperary North	16S020300
D0151-01	Thomastown	Nore	Kilkenny	15N012320
D0146-01	Tipperary Town	Ara	Tipperary South	16A030440
D0092-01	Tubbercurry	Tubbercurry	Sligo	34T020200
D0002-01	Upper Liffey Valley	Liffey	Kildare	09L011200
D0012-01	Wicklow (Ashford)	Vartry	Wicklow	10V010250
D0012-01	Wicklow (Ashford)	Vartry	Wicklow	10V010300

Appendix F: Urban waste water works identified in Pollution Reduction Programmes as key pressures on designated shellfish waters

WWDL/ Cert of Authorisation No.	Agglomeration	Pollution Reduction Programme (PRP)
D0135-01	Donegal Town	Donegal Bay Final PRP
D0522-01	Mountcharles	Donegal Bay Final PRP
A0312-01	Drumcliff	Drumcliff Bay Final PRP
D0393-01	Carney	Drumcliff Bay Final PRP
D0125-01	Buncrana	Lough Swilly Final PRP
D0513-01	Kilmacrennan	Lough Swilly Final PRP
D0009-01	Letterkenny	Lough Swilly Final PRP
D0519-01	Manorcunningham	Lough Swilly Final PRP
D0342-01	Milford	Lough Swilly Final PRP
D0349-01	Newtowncunningham	Lough Swilly Final PRP
D0341-01	Ramelton	Lough Swilly Final PRP
D0345-01	Rathmullan	Lough Swilly Final PRP
D0523-01	Carrigart	Mulroy Bay Final PRP
D0249-01	Rosses Point	Sligo Bay Final PRP
D0014-01	Sligo	Sligo Bay Final PRP
D0107-01	Strandhill	Sligo Bay Final PRP
D0113-01	Carndonagh	Trawbreega Final PRP
A0245-01	Wellington Bridge	Bannow Bay Final PRP
D0017-01	Dungarvan	Dungarvan Harbour Final PRP
D0358-01	Baile na nGall	Dungarvan Harbour Final PRP
D0022-01	Waterford City (including Abbey Park & Giles Quay)	Waterford Harbour Final PRP
D0170-01	Dunmore East	Waterford Harbour Final PRP
D0245-01	Duncannon	Waterford Harbour Final PRP
A0243-01	Arthurstown	Waterford Harbour Final PRP
D0409-01	Campile	Waterford Harbour Final PRP
A0384-01	Passage East	Waterford Harbour Final PRP
A0242-01	Ballyhack	Waterford Harbour Final PRP
A0378-01	Crooke	Waterford Harbour Final PRP
A0375-01	Cheekpoint	Waterford Harbour Final PRP
D0030-01	Wexford Town	Wexford Harbour Inner Final PRP
D0235-01	Castlebridge	Wexford Harbour Inner Final PRP
D0023-01	Ballbriggan/Skerries	Balbriggan/Skerries Final PRP
D0268-01	Carlingford	Carlingford Lough Final PRP
A0075-01	Greenore	Carlingford Lough Final PRP
A0072-01	Omeath	Carlingford Lough Final PRP
D0188-01	Blackrock	Dundalk Bay Final PRP

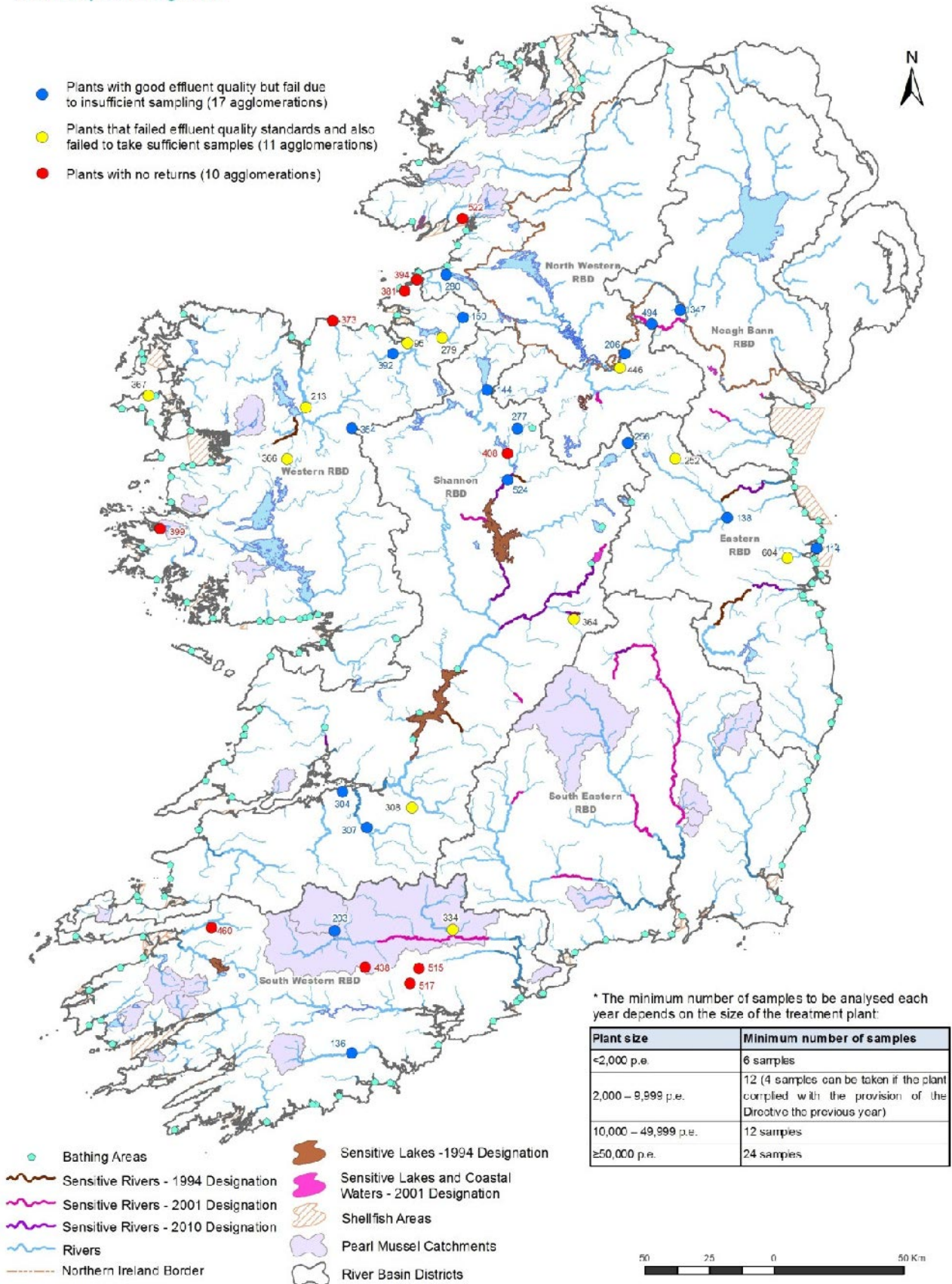
WWDL/ Cert of Authorisation No.	Agglomeration	Pollution Reduction Programme (PRP)
D0053-01	Dundalk	Dundalk Bay Final PRP
A0086-01	Annagassan	Dundalk Bay Final PRP
D0021-01	Malahide	Malahide Final PRP
D0114-01	Portrane/Donabate	Malahide Final PRP
D0024-01	Swords	Malahide Final PRP
D0276-01	Kinvarra	Clarinbridge Kinvarra Final PRP
D0198-01	Clifden	Clifton Bay Ardbear Bay Final PRP
D0067-01	Killala	Killala Bay Final PRP
A0013-01	Castlemaine	Cromane Final PRP
D0286-01	Glenbeigh	Cromane Final PRP
D0182-01	Killorglin	Cromane Final PRP
D0331-01	Milltown	Cromane Final PRP
A0088-01	Rossbeigh	Cromane Final PRP
D0284-01	Fenit	Tralee Bay Final PRP
D0040-01	Tralee	Tralee Bay Final PRP
A0022-01	Kilfenora	Tralee Bay Final PRP
D0181-01	Cahirsiveen	Valentia Harbour Final PRP
D0421-01	Knightstown	Valentia Harbour Final PRP
A0042-01	Portmagee	Valentia Harbour Final PRP

Figure G-1: Compliance in 2008 with the Urban Waste Water Treatment Directive requirements for BOD, COD and suspended solids in waste water discharges from the agglomerations required by the Directive to have secondary treatment.¹



¹ The Directive requires waste water from agglomerations $\geq 2,000$ p.e. discharging to freshwater or estuaries and agglomerations $\geq 10,000$ p.e. discharging to coastal waters to be subject to secondary treatment or equivalent. Compliance was assessed against the limits for BOD (25 mg/l O_2), COD (125 mg/l O_2) and suspended solids (35 mg/l) set in Table 1 of the Directive, and the sampling requirements in Annex 1.D.3 of the Directive. The numbers on this map correspond to the WWDL Registration Number of each agglomeration e.g. 34 is D0034-01. For a complete list of numbers and their corresponding agglomeration names see Appendix A, Table A-1. Go to www.epa.ie/downloads to view this map.

Figure H-1: Waste water treatment plants with at least secondary treatment where an insufficient number of effluent samples* were analysed during 2009.¹



¹ The numbers on this map correspond to the WWDL Registration Number of each agglomeration e.g. 34 is D0034-01. For a Complete list of numbers and their corresponding agglomeration names see Appendix A, Table A-1. Go to www.epa.ie/downloads to view this map.

Appendix I: Smaller agglomerations, in the size range 500 p.e. up to the Directive thresholds¹, with no treatment or preliminary treatment only in 2009.

Reg. No.	Agglomeration	Water Services Authority
D0327-01	Ballyvaughan	Clare County Council
D0322-01	Clarecastle	Clare County Council
D0078-01	Kilkee	Clare County Council
D0075-01	Kilrush	Clare County Council
D0430-01	Liscannor	Clare County Council
D0168-01	Bantry	Cork County Council
D0297-01	Castletownbere	Cork County Council
D0468-01	Castletownshend	Cork County Council
D0436-01	Ringaskiddy village	Cork County Council
D0466-01	Timoleague	Cork County Council
D0423-01	Whitegate/Agada	Cork County Council
D0130-01	Bundoran	Donegal County Council
D0520-01	Kilcar	Donegal County Council
D0119-01	Rush	Fingal County Council
<i>Footnote</i> ²	Howth	Fingal County Council
D0276-01	Kinvara	Galway County Council
D0372-01	Ahascragh	Galway County Council
D0388-01	Carraroe	Galway County Council
D0396-01	Spiddal	Galway County Council
D0526-01	Freshford	Kilkenny County Council
D0067-01	Killala	Mayo County Council
D0074-01	Belmullet	Mayo County Council
D0170-01	Dunmore East	Waterford County Council
D0162-01	Ardmore	Waterford County Council
D0245-01	Duncannon	Wexford County Council
D0232-01	Kilmore Quay	Wexford County Council

¹ 2,000 p.e. for discharges to freshwater and estuaries. 10,000 p.e. for coastal discharges.

² Waste water from Howth is now pumped to Ringsend waste water treatment plant (D0034-01), with the exception of 112 p.e. that discharges without treatment at Doldrum Bay.

An Ghníomhaireacht um Chaomhnú Comhshaoil

Is í an Ghníomhaireacht um Chaomhnú Comhshaoil (EPA) comhlachta reachtúil a chosnaíonn an comhshaol do mhuintir na tíre go léir. Rialaímid agus déanaimid maoirsiú ar ghníomhaíochtaí a d'fhéadfadh truailliú a chruthú murach sin. Cinntímid go bhfuil eolas cruinn ann ar threochtaí comhshaoil ionas go nglactar aon chéim is gá. Is iad na príomhnithe a bhfuilimid gníomhach leo ná comhshaol na hÉireann a chosaint agus cinntiú go bhfuil forbairt inbhuanaithe.

Is comhlacht poiblí neamhspleách í an Ghníomhaireacht um Chaomhnú Comhshaoil (EPA) a bunaíodh i mí Iúil 1993 faoin Acht fán nGníomhaireacht um Chaomhnú Comhshaoil 1992. Ó thaobh an Rialtais, is í an Roinn Comhshaoil, Pobal agus Rialtais Áitiúil.

ÁR bhFREAGRACHTAÍ

CEADÚNÚ

Bíonn ceadúnais á n-eisiúint againn i gcomhair na nithe seo a leanas chun a chinntiú nach mbíonn astuithe uathu ag cur sláinte an phobail ná an comhshaol i mbaol:

- áiseanna dramhaíola (m.sh., líonadh talún, loisceoirí, stáisiúin aistrithe dramhaíola);
- gníomhaíochtaí tionsclaíocha ar scála mór (m.sh., déantúsaíocht cógaisíochta, déantúsaíocht stroighne, stáisiún chumhachta);
- diantalmhaíocht;
- úsáid faoi shrian agus scaoileadh smachtaithe Orgánach Géinathraithe (GMO);
- mór-áiseanna stórais peitreal;
- scardadh dramhuisce.

FEIDHMIÚ COMHSHAOIL NÁISIÚNTA

- Stiúradh os cionn 2,000 iniúchadh agus cigireacht de áiseanna a fuair ceadúnas ón nGníomhaireacht gach bliain.
- Maoirsiú freagrachtaí cosanta comhshaoil údarás áitiúla thar sé earnáil - aer, fuaim, dramhaíl, dramhuisce agus caighdeán uisce.
- Obair le húdaráis áitiúla agus leis na Gardaí chun stop a chur le gníomhaíocht mhídhleathach dramhaíola trí chomhordú a dhéanamh ar líonra forfheidhmithe náisiúnta, díriú isteach ar chiontóirí, stiúradh fiosrúcháin agus maoirsiú leigheas na bhfadhbanna.
- An dlí a chur orthu siúd a bhriseann dlí comhshaoil agus a dhéanann dochar don chomhshaol mar thoradh ar a ngníomhaíochtaí.

MONATÓIREACHT, ANAILÍS AGUS TUAIRISCIÚ AR AN GCOMHSHAOIL

- Monatóireacht ar chaighdeán aer agus caighdeáin aibhneacha, locha, uiscí taoide agus uiscí talaimh; leibhéil agus sruth aibhneacha a thomhas.
- Tuairisciú neamhspleách chun cabhrú le rialtais náisiúnta agus áitiúla cinntiú a dhéanamh.

RIALÚ ASTUITHE GÁIS CEAPTHA TEASA NA HÉIREANN

- Caimníochtú astuithe gáis ceaptha teasa na hÉireann i gcomhthéacs ár dtiomantas Kyoto.
- Cur i bhfeidhm na Treorach um Thrádáil Astuithe, a bhfuil baint aige le hos cionn 100 cuideachta atá ina mór-ghineadóirí dé-ocsaíd charbóin in Éirinn.

TAIGHDE AGUS FORBAIRT COMHSHAOIL

- Taighde ar shaincheisteanna comhshaoil a chomhordú (cosúil le caighdeán aer agus uisce, athrú aeráide, bithéagsúlacht, teicneolaíochtaí comhshaoil).

MEASÚNÚ STRAITÉISEACH COMHSHAOIL

- Ag déanamh measúnú ar thionchar phleananna agus chláracha ar chomhshaol na hÉireann (cosúil le pleananna bainistíochta dramhaíola agus forbartha).

PLEANÁIL, OIDEACHAS AGUS TREOIR CHOMHSHAOIL

- Treoir a thabhairt don phobal agus do thionscal ar cheisteanna comhshaoil éagsúla (m.sh., iarratais ar cheadúnais, seachaint dramhaíola agus rialacháin chomhshaoil).
- Eolas níos fearr ar an gcomhshaol a scaipeadh (trí cláracha teilifíse comhshaoil agus pacáistí acmhainne do bhunscoileanna agus do mheánscoileanna).

BAINISTÍOCHT DRAMHAÍOLA FHORGHNÍOMHACH

- Cur chun cinn seachaint agus laghdú dramhaíola trí chomhordú An Chláir Náisiúnta um Chosc Dramhaíola, lena n-áirítear cur i bhfeidhm na dTionscnamh Freagrachta Táirgeoirí.
- Cur i bhfeidhm Rialachán ar nós na treoracha maidir le Trealamh Leictreach agus Leictreonach Caite agus le Srianadh Substaintí Ghuaiseacha agus substaintí a dhéanann ídiú ar an gcrios ózóin.
- Plean Náisiúnta Bainistíochta um Dramhaíl Ghuaiseach a fhorbairt chun dramhaíl ghuaiseach a sheachaint agus a bhainistiú.

STRUCHTÚR NA GNÍOMHAIREACHTA

Bunaíodh an Ghníomhaireacht i 1993 chun comhshaol na hÉireann a chosaint. Tá an eagraíocht á bhainistiú ag Bord lánaimseartha, ar a bhfuil Príomhstíúrthóir agus ceithre Stíúrthóir.

Tá obair na Ghníomhaireachta ar siúl trí ceithre Oifig:

- An Oifig Aeráide, Ceadúnaithe agus Úsáide Acmhainní
- An Oifig um Fhorfheidhmiúchán Comhshaoil
- An Oifig um Measúnacht Comhshaoil
- An Oifig Cumarsáide agus Seirbhísí Corparáide

Tá Coiste Comhairleach ag an nGníomhaireacht le cabhrú léi. Tá dáréag ball air agus tagann siad le chéile cúpla uair in aghaidh na bliana le plé a dhéanamh ar cheisteanna ar ábhar inní iad agus le comhairle a thabhairt don Bhord.



**Headquarters, PO Box 3000
Johnstown Castle Estate
County Wexford, Ireland**

Ceanncheathrú, Bosca Poist 3000
Eastát Chaisleán Bhaile Sheáin
Contae Loch Garman, Éire

T:+353 53 916 0600
F:+353 53 916 0699

**Regional Inspectorate
McCumiskey House, Richview
Clonskeagh Road, Dublin 14, Ireland**

Cigireacht Réigiúnach, Teach Mhic Chumascaigh
Dea-Radharc, Bóthar Cluain Sceach
Baile Átha Cliath 14, Éire

T:+353 1 268 0100
F:+353 1 268 0199

**Regional Inspectorate
Inniscarra, County Cork, Ireland**

Cigireacht Réigiúnach, Inis Cara
Contae Chorcaí, Éire

T:+353 21 487 5540
F:+353 21 487 5545

**Regional Inspectorate
John Moore Road, Castlebar
County Mayo, Ireland**

Cigireacht Réigiúnach, Bóthar Sheán de Mórdha
Caisleán an Bharraigh, Contae Mhaigh Eo, Éire

T:+353 94 904 8400
F:+353 94 902 1934

**Regional Inspectorate
Seville Lodge, Callan Road,
Kilkenny, Ireland**

Cigireacht Réigiúnach, Lóiste Sevilla,
Bóthar Challainn, Cill Chainnigh, Éire

T:+353 56 779 6700
F:+353 56 779 6798

**Regional Inspectorate
The Glen, Monaghan, Ireland**

Cigireacht Réigiúnach, An Gleann
Muineachán, Éire

T:+353 47 77600
F:+353 47 84987

E: info@epa.ie
W: www.epa.ie
Lo Call: 1890 33 55 99



Printed on an environmentally friendly paper stock